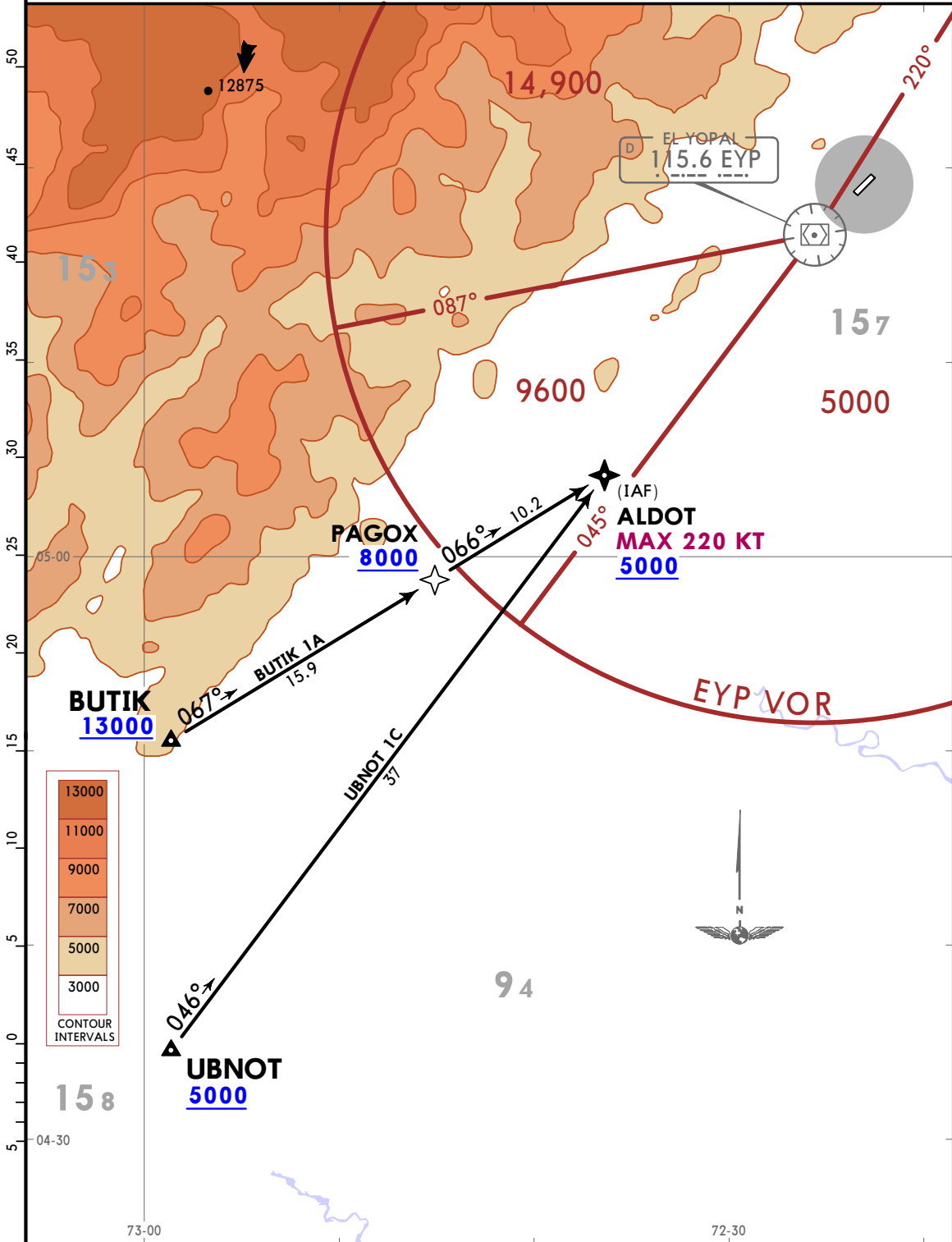


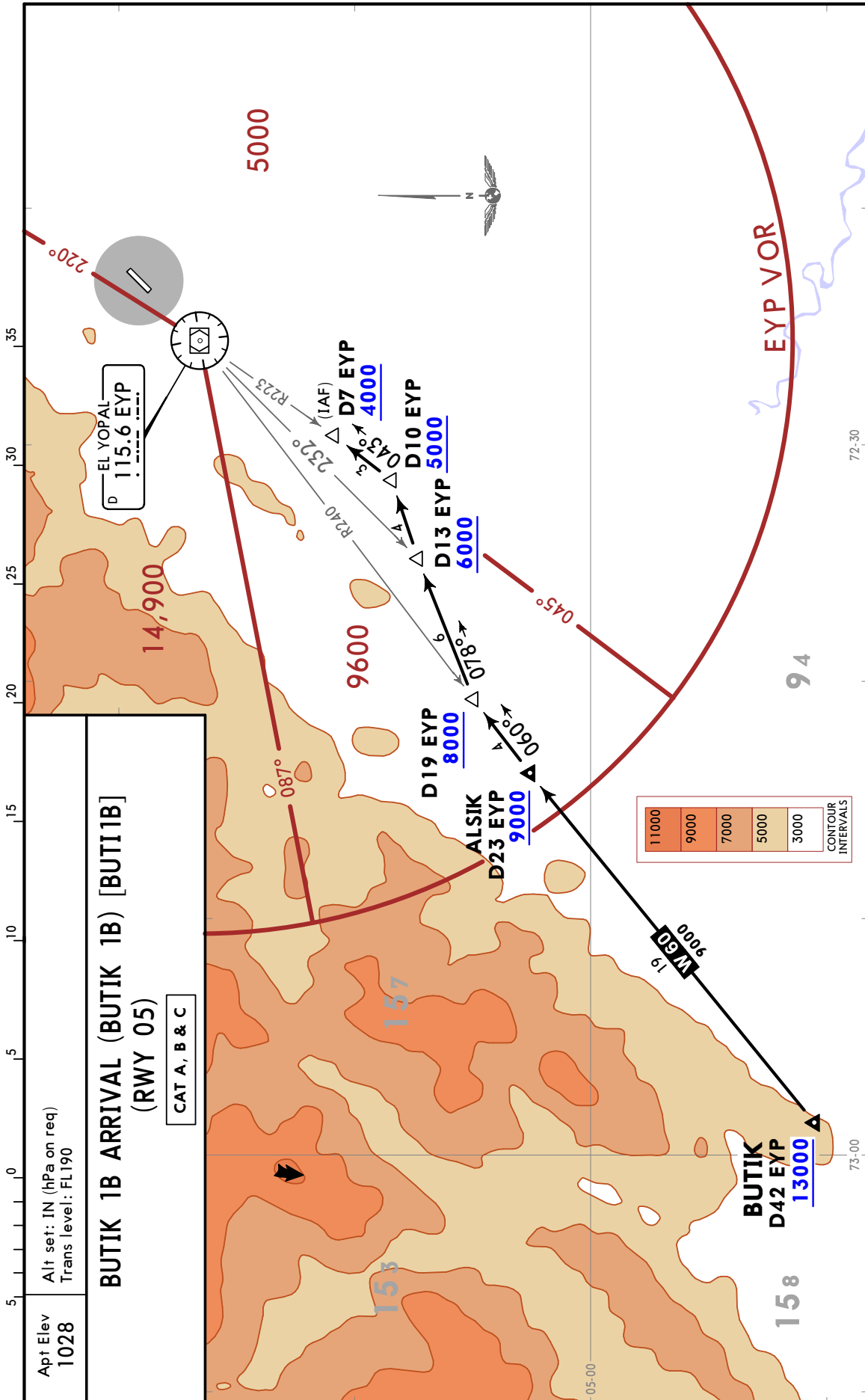
Apt Elev
1028

Alt set: IN (hPa on req)
Trans level: FL190
1. RNP 1 or RNAV 1.
2. GNSS required.

BUTIK 1A [BUTI1A]
UBNOT 1C [UBNO1C]
RNAV (GNSS) ARRIVALS
(RWY 05)

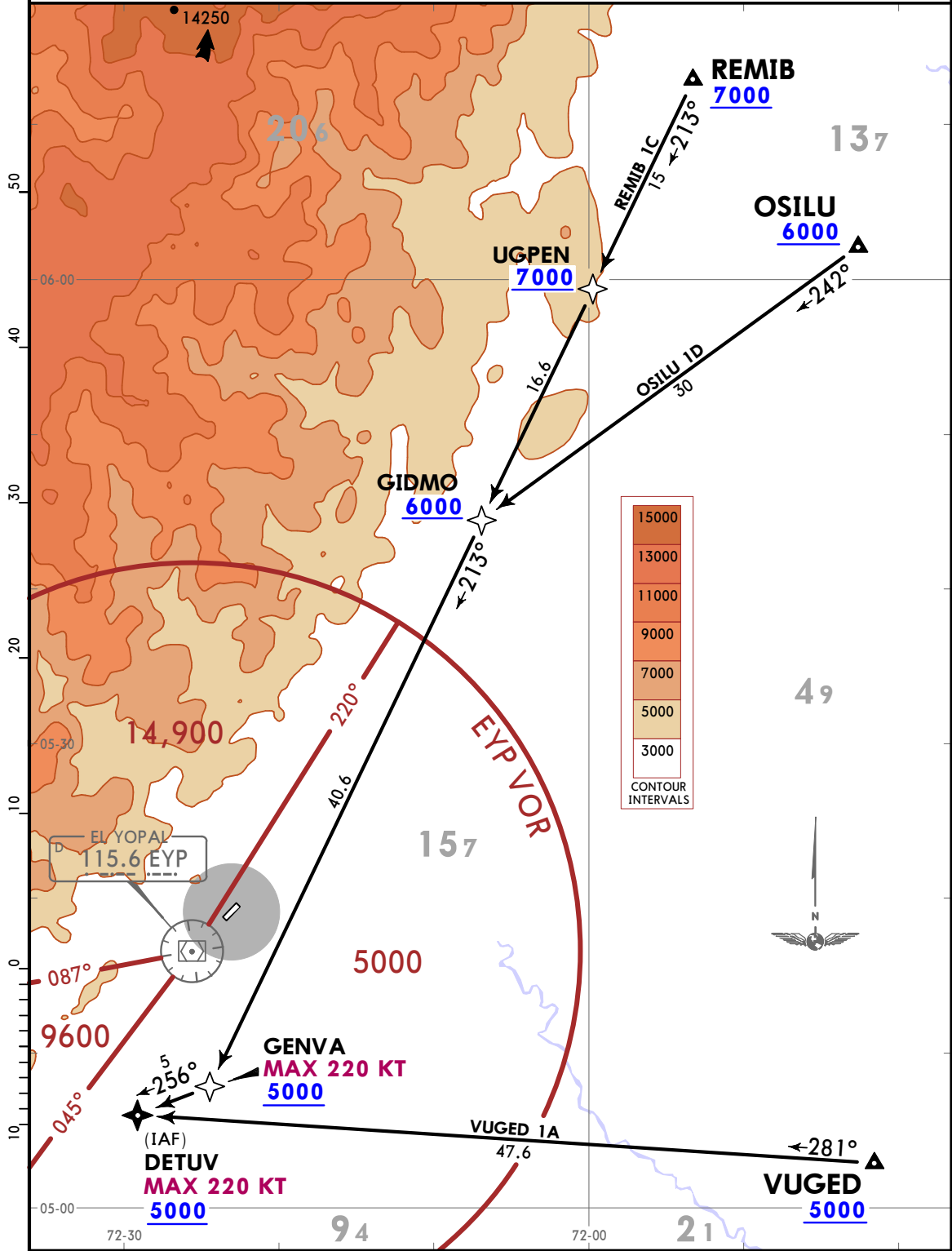
CAT A, B, C & D





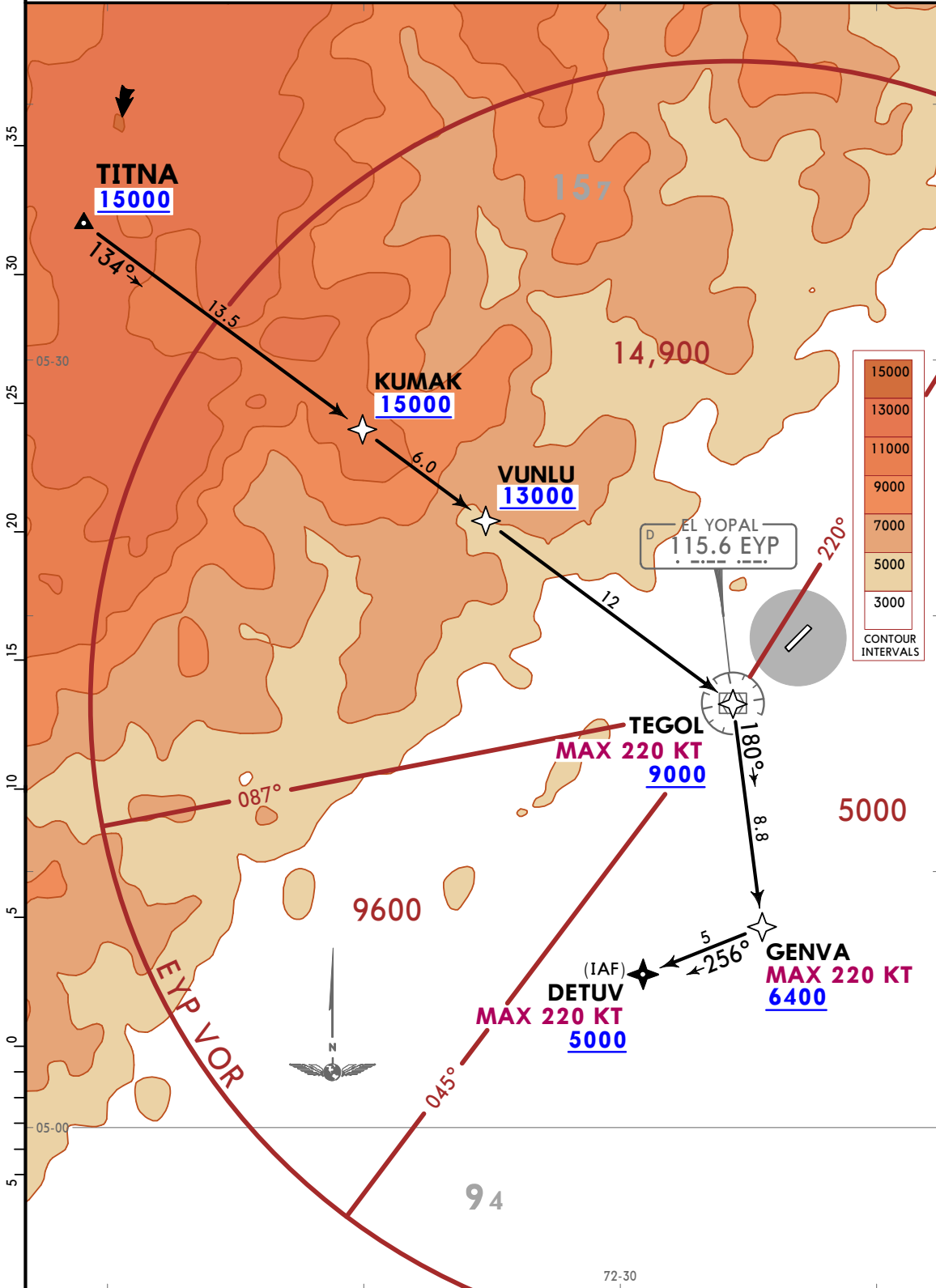
Apt Elev 1028	Alt set: IN (hPa on req) Trans level: FL190 1. GNSS only. 2. DME/DME not authorized.
------------------	---

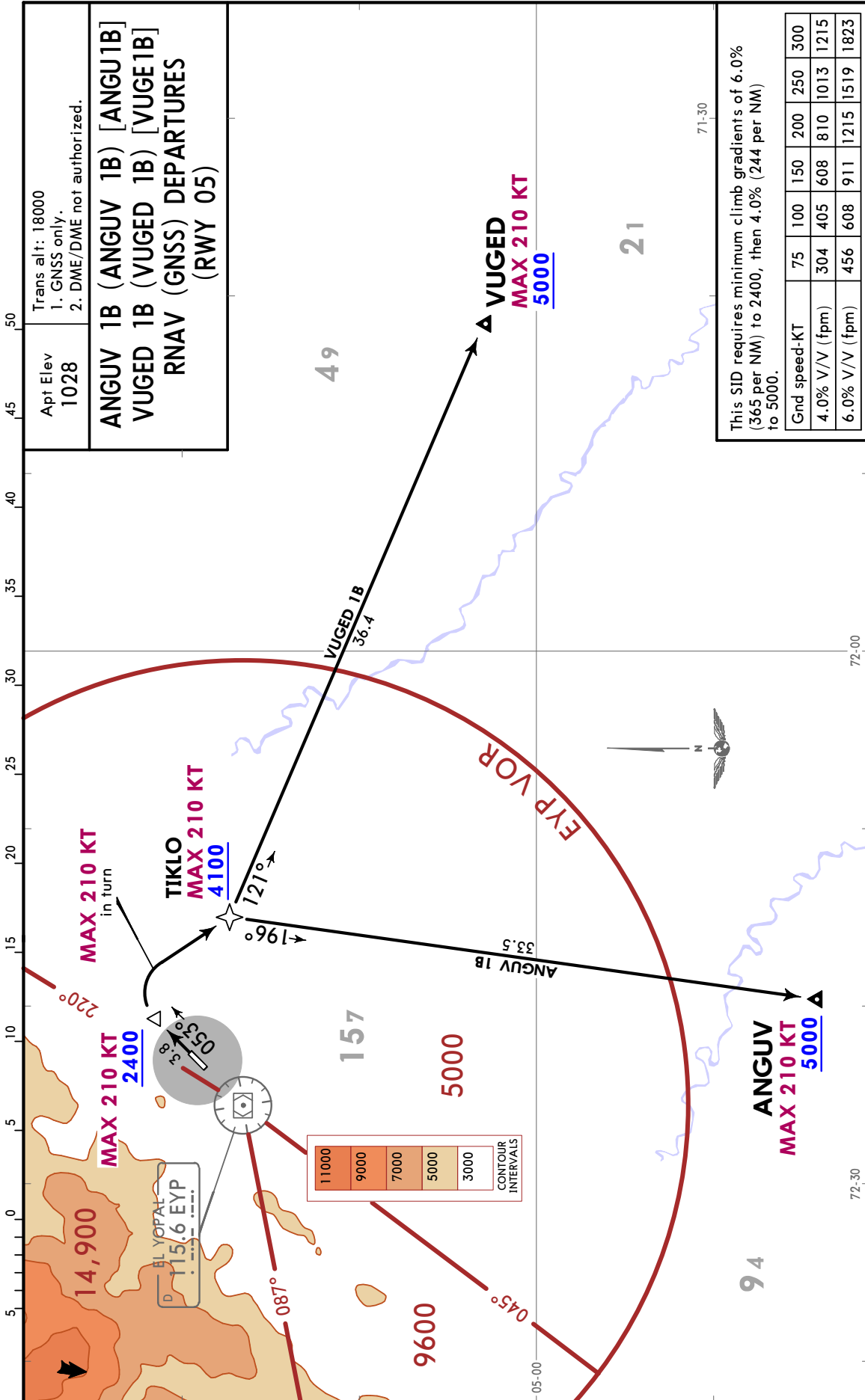
OSILU 1D (OSILU 1D) [OSIL1D]
REMIB 1C (REMIB 1C) [REMI1C]
VUGED 1A (VUGED 1A) [VUGE1A]
RNAV (GNSS) ARRIVALS
(RWY 05)



Apt Elev
1028
Alt set: IN (hPa on req)
Trans level: FL190
1. GNSS only.
2. DME/DME not authorized.

TITNA 1A (TITNA 1A) [TITN1A]
RNAV (GNSS) ARRIVAL
(RWY 05)





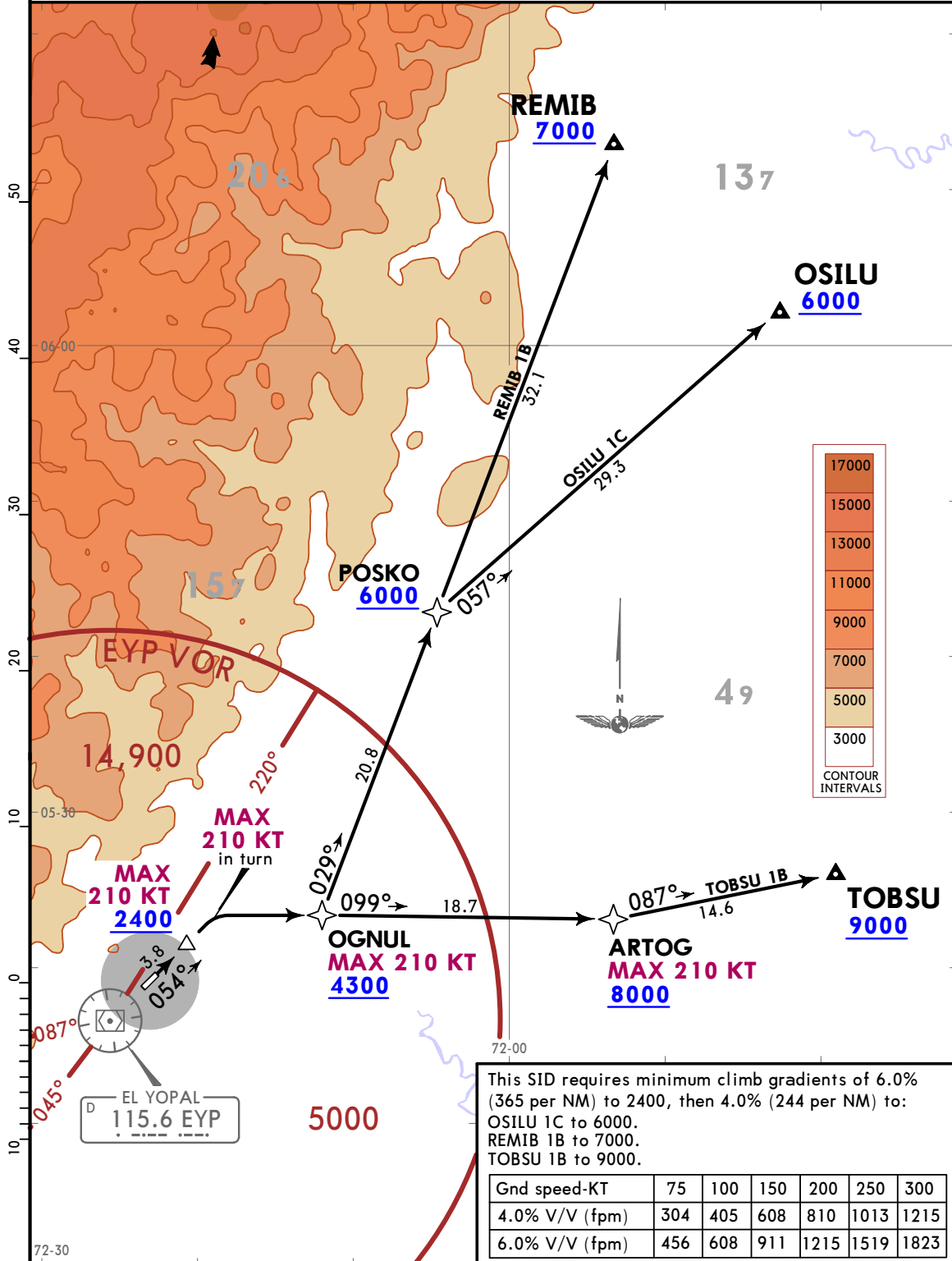
CHANGES: Waypoint TIKLO.

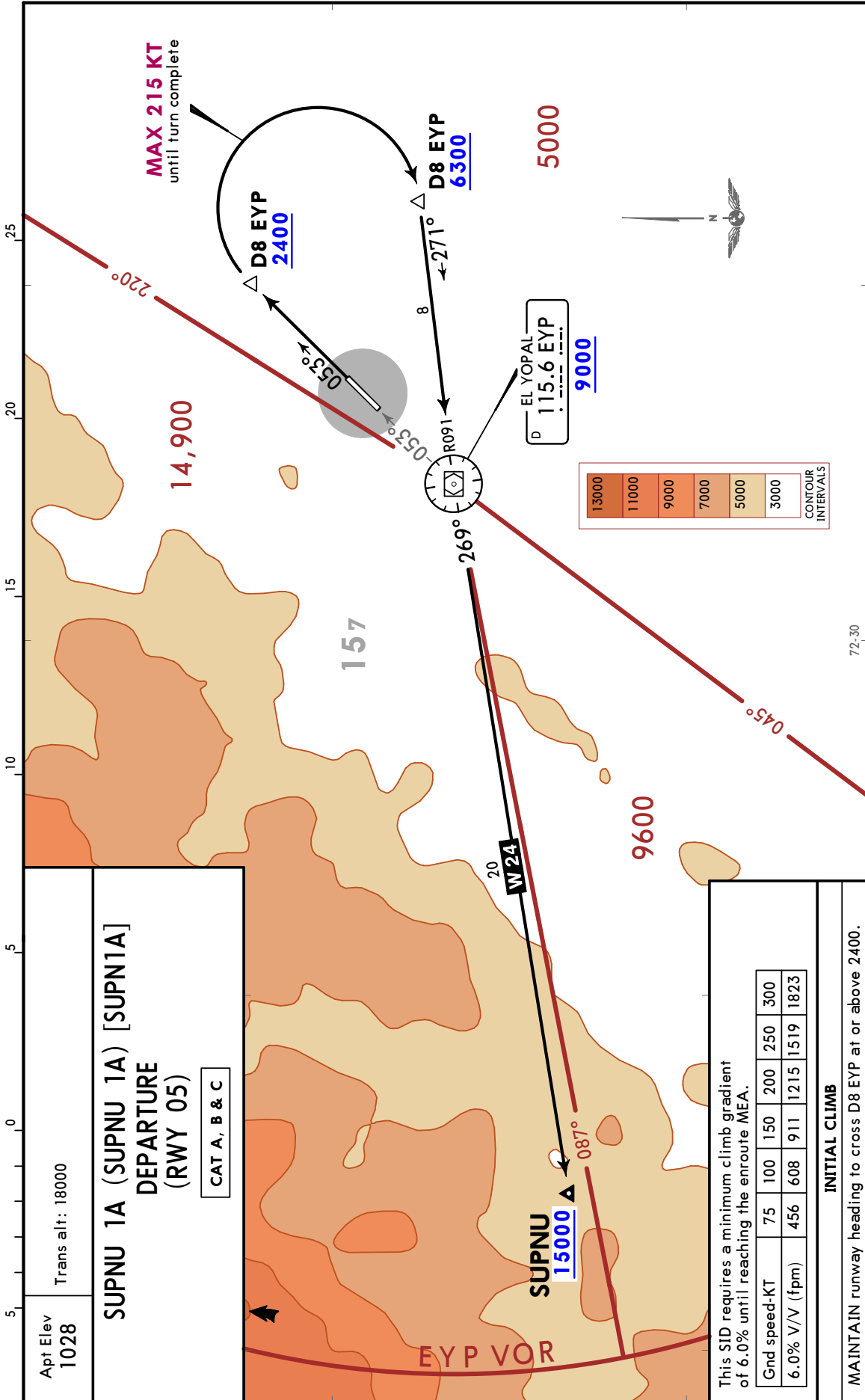
© JEPPESEN, 2019, 2020. ALL RIGHTS RESERVED.

Apt Elev
1028

Trans alt: 18000
1. RNP1 or RNAV1.
2. GNSS required.

OSILU 1C (OSILU 1C) [OSIL1C]
REMIB 1B (REMIB 1B) [REMI1B]
TOBSU 1B (TOBSU 1B) [TOBS1B]
RNAV (GNSS) DEPARTURES
(RWY 05)

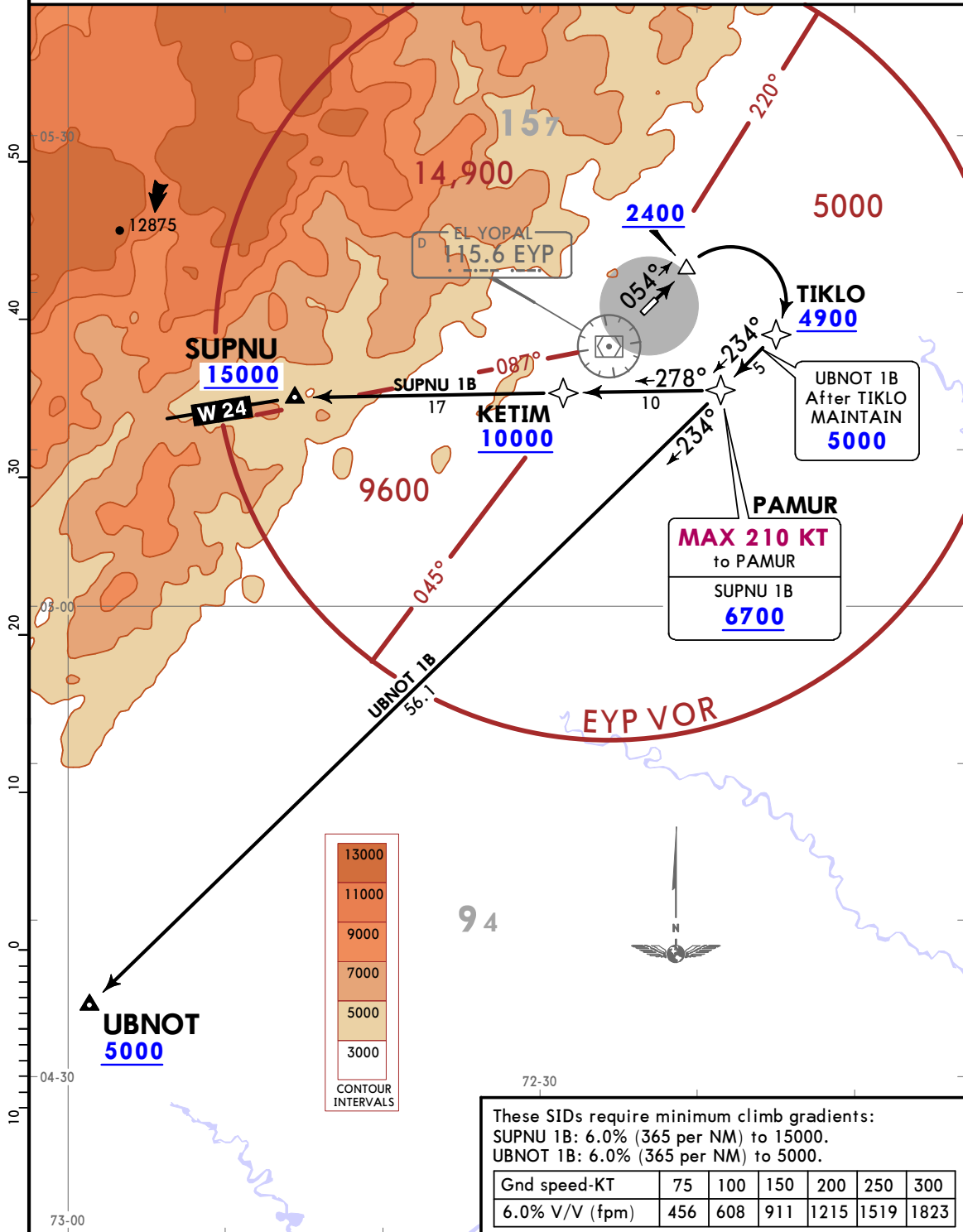




Apt Elev 1028	Trans alt: 18000 1. RNP 1 or RNAV 1. 2. GNSS required.
-------------------------	--

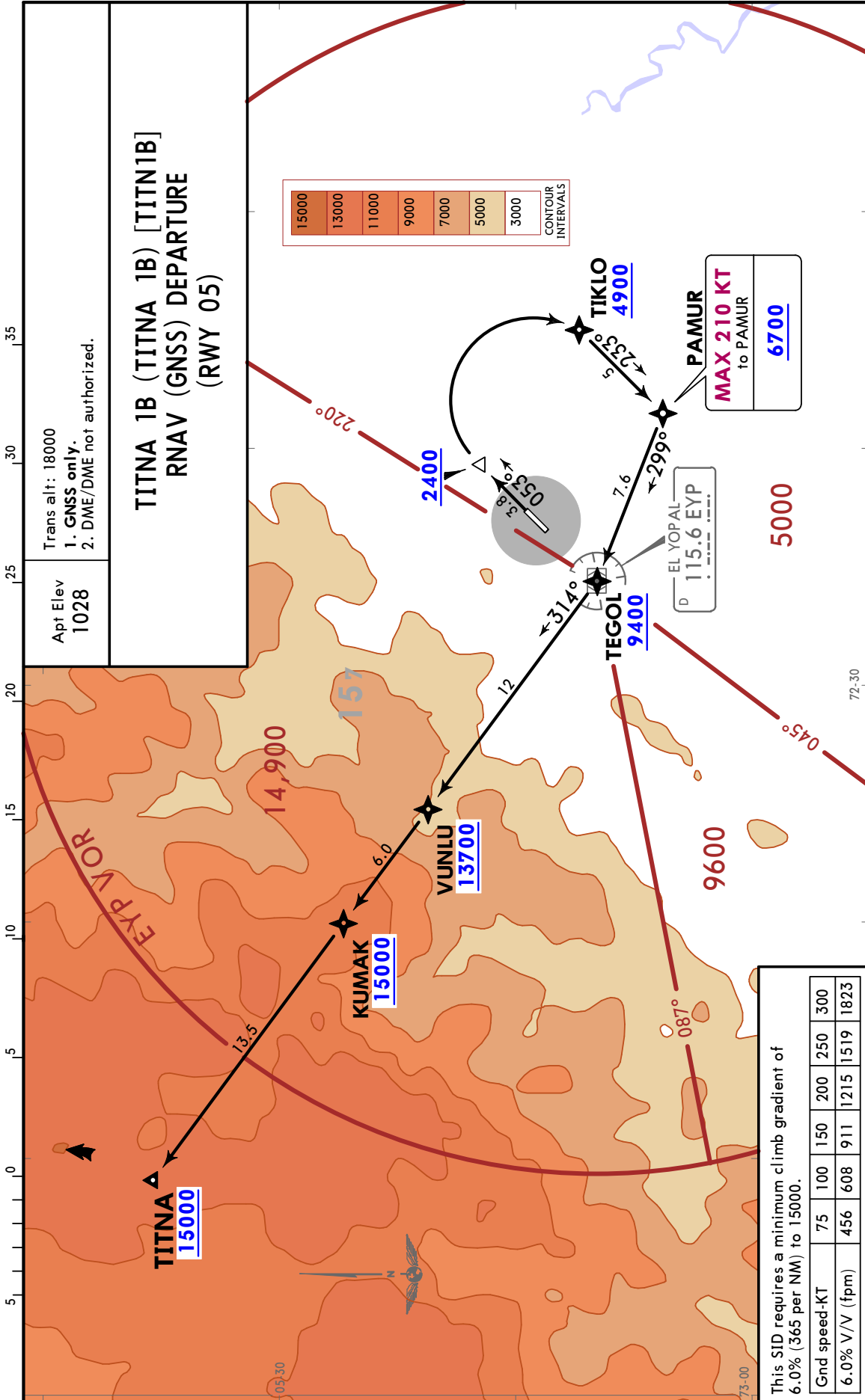
**SUPNU 1B [SUPN1B]
UBNOT 1B [UBNO1B]
RNAV (GNSS) DEPARTURES
(RWY 05)**

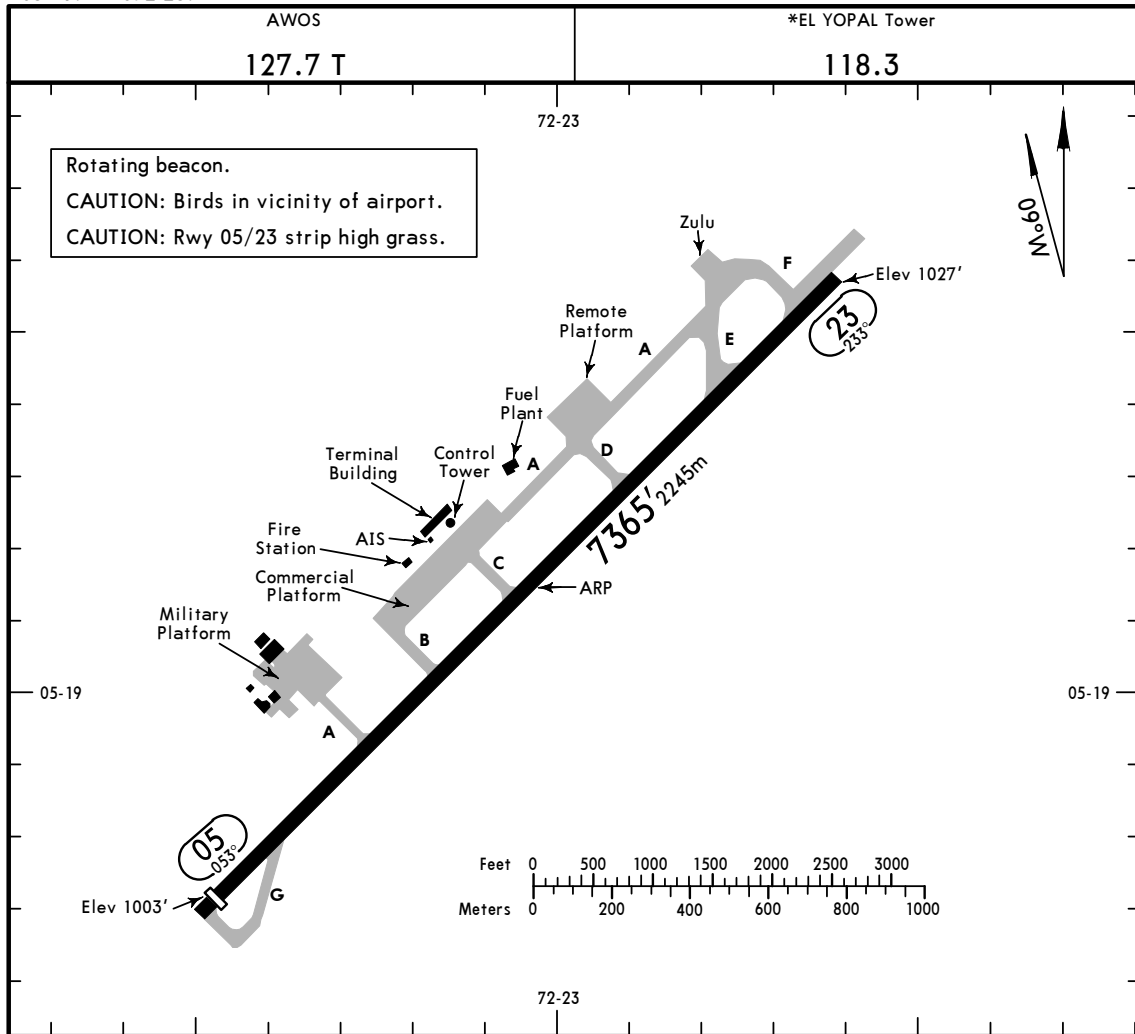
CAT A, B, C & D



These SIDs require minimum climb gradients:
 SUPNU 1B: 6.0% (365 per NM) to 15000.
 UBNOT 1B: 6.0% (365 per NM) to 5000.

Gnd speed-KT	75	100	150	200	250	300
6.0% V/V (fpm)	456	608	911	1215	1519	1823





ADDITIONAL RUNWAY INFORMATION

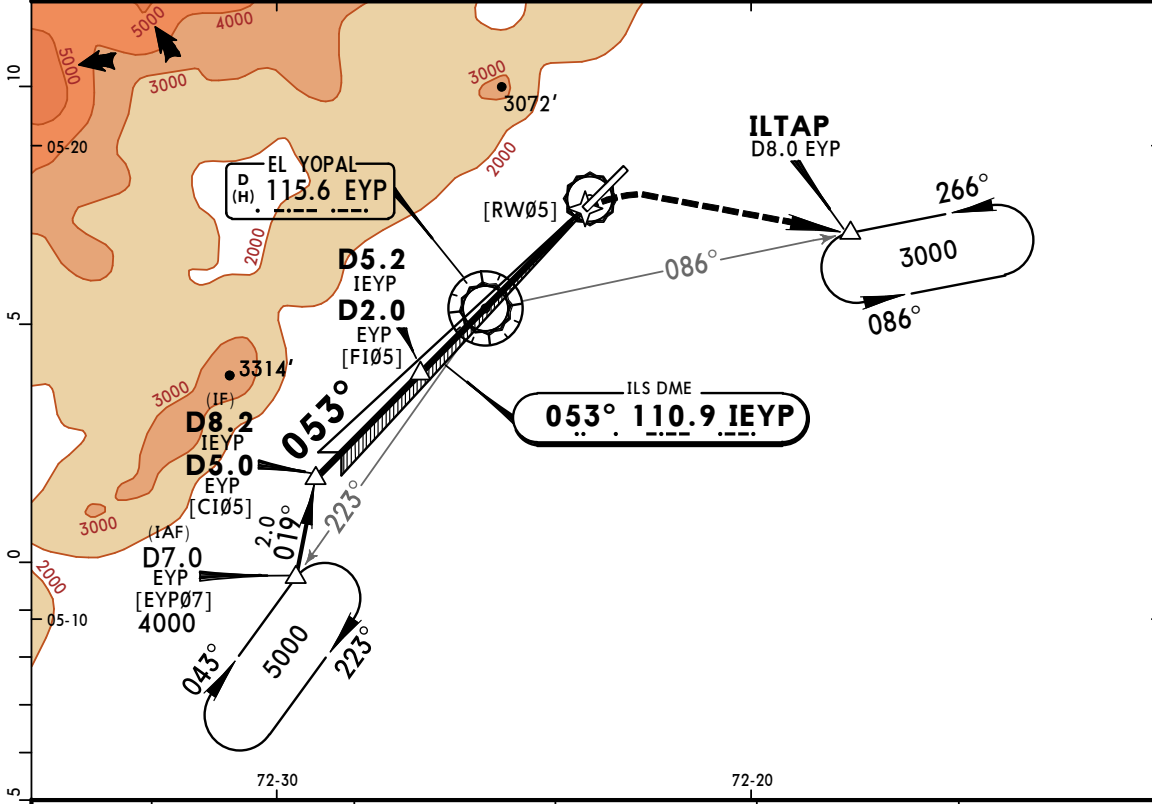
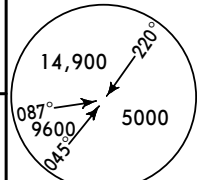
RWY	USABLE LENGTHS	LANDING BEYOND	TAKE-OFF	WIDTH	
					Threshold
05 23	MIRL PAPI-L (angle 3.0°)		6340' 1932m	7562' 2305m	118' 36m

TAKE-OFF

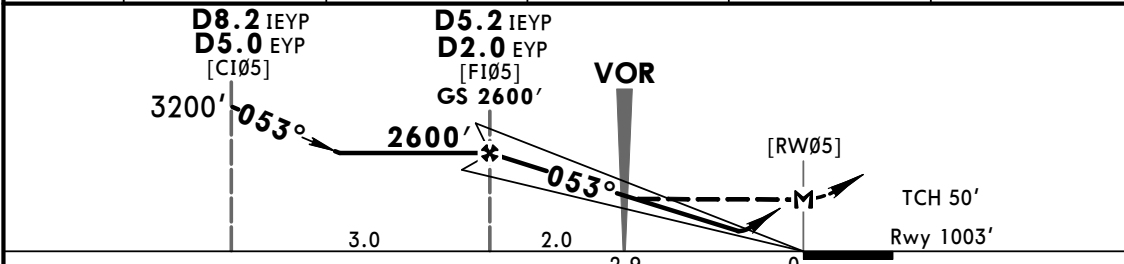
Rwy 05/23	
	1 Take-off Alternate Airport Filed RL & CL or RCLM
	Standard
1 Eng	500' - 3000m
2 Eng	1 hour alternate (1 Eng inop) 500m
3 & 4 Eng	2 hour alternate (1 Eng inop) 500m

1 With appropriate approval.

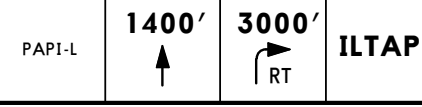
*AWOS 127.7 T		*EL YOPAL Approach 126.8		*EL YOPAL Tower 118.3	
LOC IEYP 110.9	Final Apch Crs 053°	GS D5.2 IEYP D2.0 EYP 2600' (1597')	ILS DA(H) 1260' (257')	Apt Elev 1028' Rwy 1003'	
MISSED APCH: Reaching 1400', turn RIGHT to ILTAP climbing to 3000'.					
Alt Set: IN (hPa on req)		Trans level: FL 190		Trans alt: 18000'	
MSA EYP VOR					



LOC (GS out)	IEYP DME	5.0	4.0	3.0	2.0
	ALTITUDE	2600'	2282'	1964'	1646'



Gnd speed-Kts	70	90	100	120	140	160
GS	3.00°	372	478	531	637	849
FAF to MAP	5.2	4:27	3:28	3:07	2:36	2:14
					1:57	



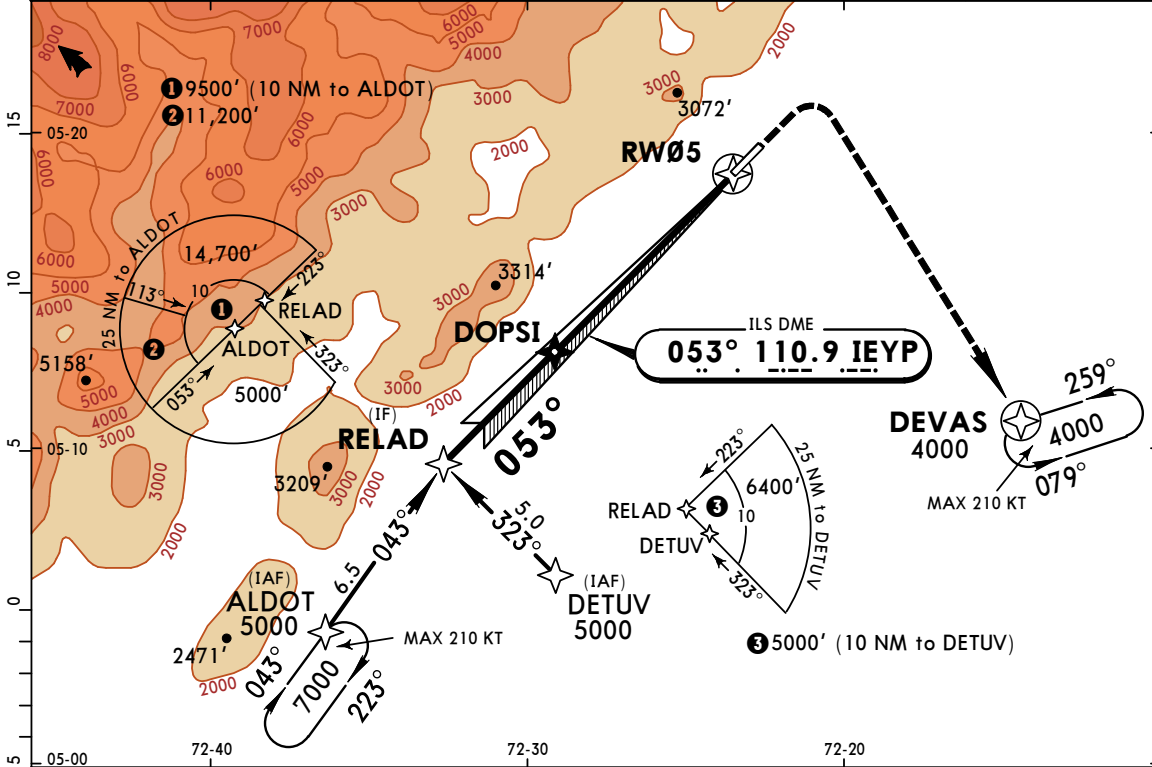
STRAIGHT-IN LANDING RWY 05			CIRCLE-TO-LAND		
ILS DA(H) 1260' (257')			LOC (GS out) MDA(H) 1390' (387')		
1300m			Not Authorized Northwest of Airport		
A			Max Kts	MDA(H)	
B		2000m	100	1430' (402')	-2100m
C		2200m	135	1720' (692')	-3400m
D	NOT APPLICABLE	NOT APPLICABLE	180	2410' (1382')	-5000m
			D	NOT APPLICABLE	

PANS OPS

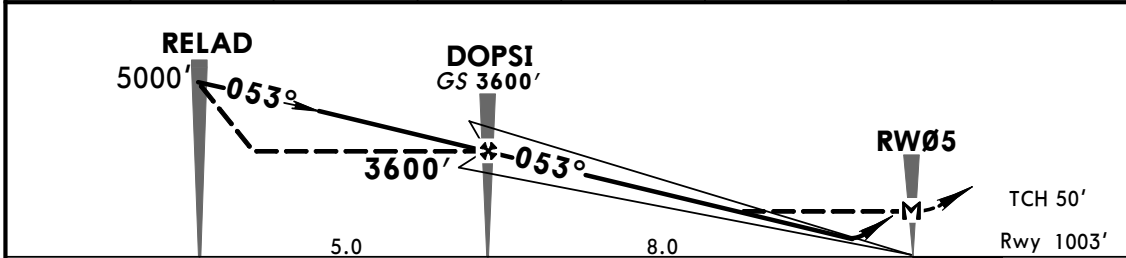
CHANGES: AWOS added.

© JEPPESEN, 2011, 2018. ALL RIGHTS RESERVED.

*AWOS 127.7 T		*EL YOPAL Approach 126.8			*EL YOPAL Tower 118.3	
LOC IEYP 110.9	Final Apch Crs 053°	GS DOPSI 3600' (2597')	ILS Refer to Minimums	Apt Elev 1028' Rwy 1003'		TAA 25 NM ALDOT, DETUV
MISSED APCH: Climb on runway heading until 1400', turn RIGHT to DEVAS holding pattern climbing to 4000'. Max IAS 185 KT on missed approach.						
Alt Set: IN (hPa on req) 1. RNP1 or RNAV1 GNSS required.		Trans level: FL 190 2. Max IAS 220 KT on approach.		Trans alt: 18000'		



LOC (GS out)	8.0	7.0	6.0	5.0	4.0	3.0	2.0
	3600'	3270'	2950'	2640'	2320'	2010'	1690'

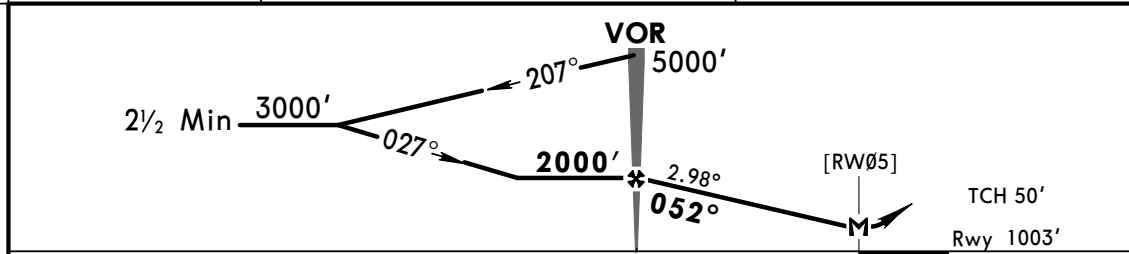
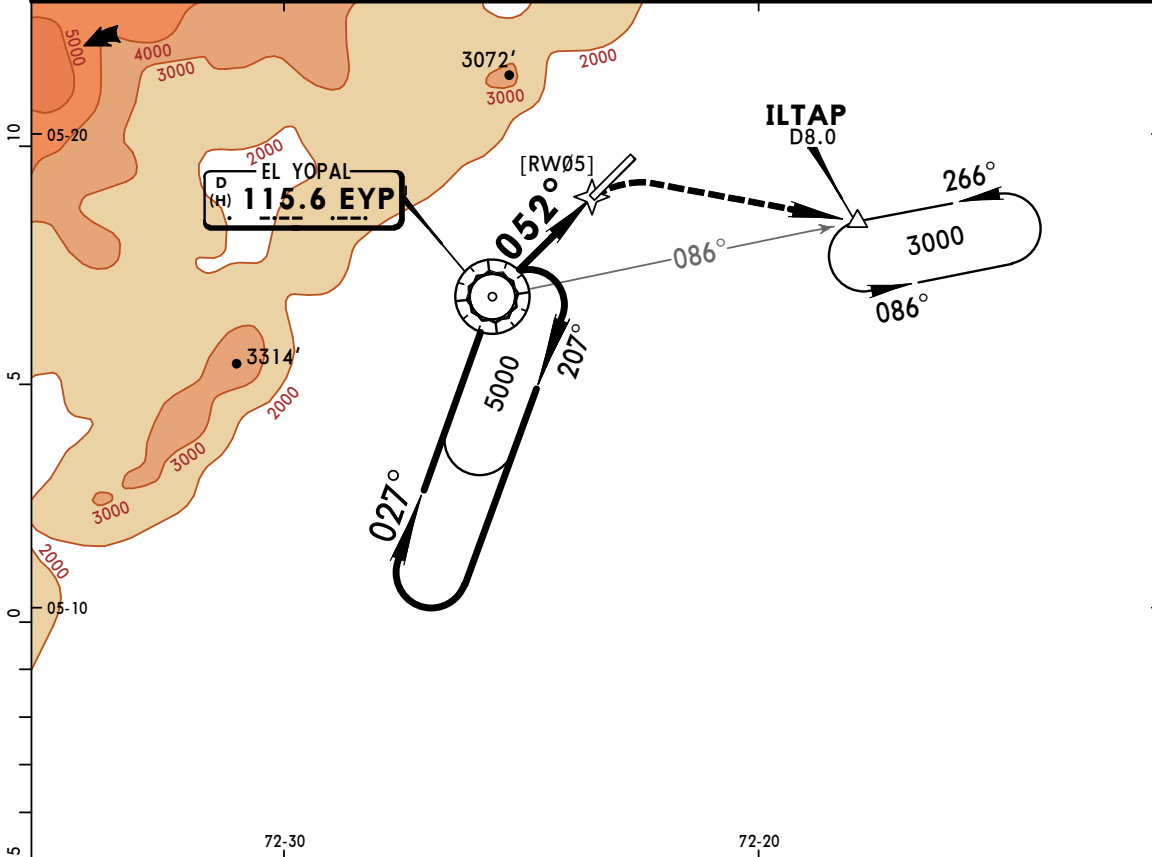


Gnd speed-Kts	70	90	100	120	140	160	PAPI-L	1400'	4000'	DEVAS
GS	3.00°	372	478	531	637	743				
DOPSI to MAP	8.0	6:51	5:20	4:48	4:00	3:26	3:00			

STRAIGHT-IN LANDING RWY 05				CIRCLE-TO-LAND			
ILS A, B, C: DA(H) 1260' (257') D: DA(H) 1280' (277')		LOC (GS out) MDA(H) 1390' (387')		PAPI-L		DEVAS	
A	1300m		2000m	Max Kts	MDA(H)		
B				100	1430' (402') -2100m		
C				135	1720' (692') -3400m		
D				180	2410' (1382') -5000m		
			2200m	205	2650' (1622') -5000m		

PANS OPS

*AWOS 127.7 T		*EL YOPAL Approach 126.8		*EL YOPAL Tower 118.3	
VOR EYP 115.6	Final Apch Crs 052°	Minimum Alt VOR 2000' (997')	MDA(H) 1390' (387')	Apt Elev 1028' Rwy 1003'	
MISSED APCH: Reaching 1400', turn RIGHT to ILTAP climbing to 3000'.					
Alt Set: IN (hPa on req)		Trans level: FL 190		Trans alt: 18000'	
1. Max IAS 140 KT outbound on procedure hold.					

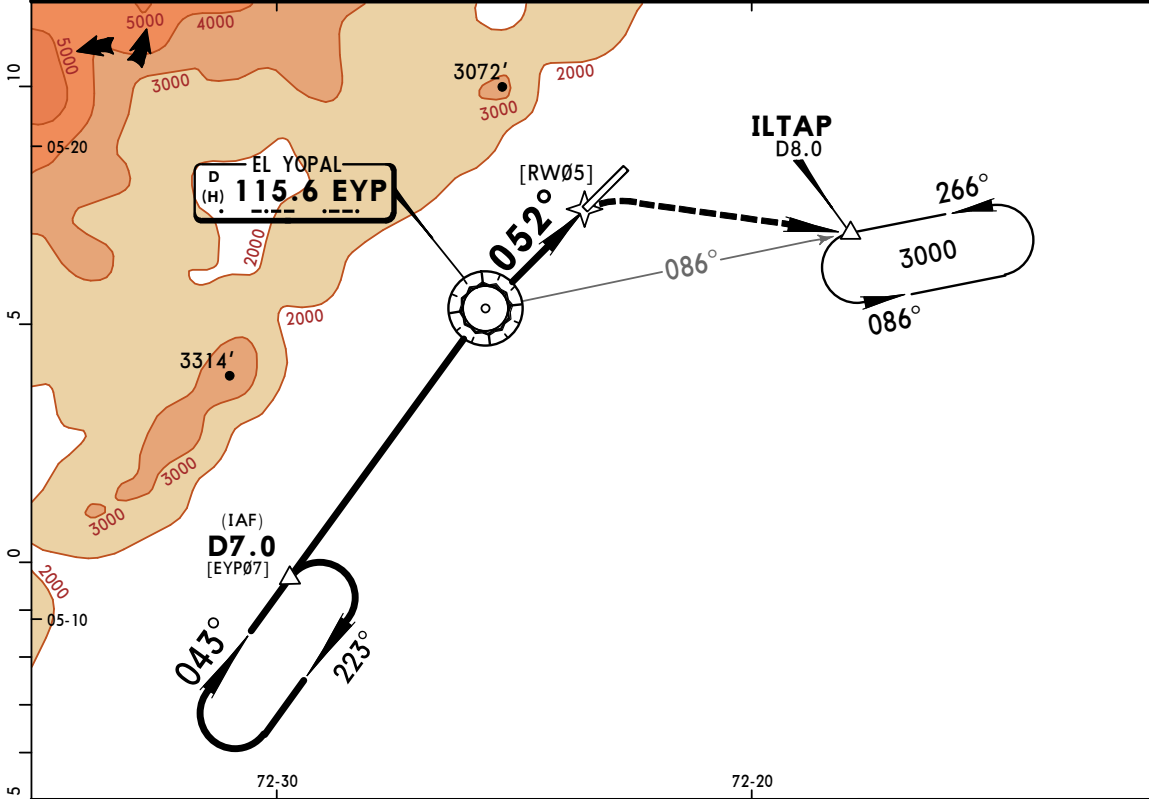


Gnd speed-Kts	70	90	100	120	140	160	PAPI-L	1400'	3000'	ILTAP	
Descent Angle	2.98°	369	474	527	633	738					843
VOR to MAP	2.9	2:29	1:56	1:44	1:27	1:15					1:05

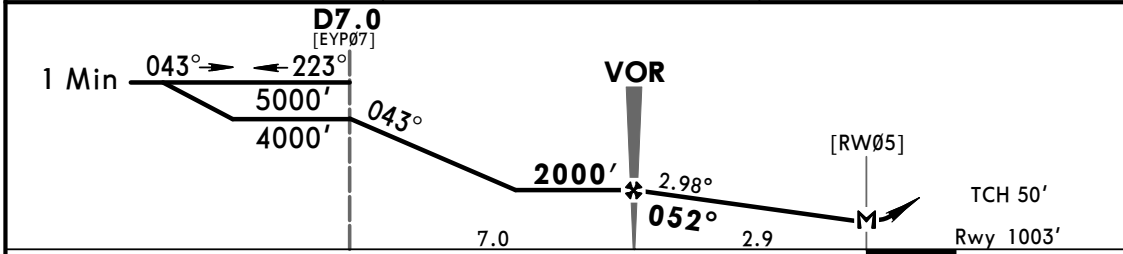
STRAIGHT-IN LANDING RWY 05				CIRCLE-TO-LAND			
MDA(H) 1390' (387')				Not Authorized Northwest of Airport			
A	2000m			Max Kts	MDA(H)		
B				100	1430' (402')	-2100m	
C				135	1720' (692')	-3400m	
D	NOT APPLICABLE			180	2410' (1382')	-5000m	
				D	NOT APPLICABLE		

PANS OPS

*AWOS 127.7 T		*EL YOPAL Approach 126.8		*EL YOPAL Tower 118.3	
VOR EYP 115.6	Final Apch Crs 052°	Minimum Alt VOR 2000' (997')	MDA(H) 1390' (387')	Apt Elev 1028' Rwy 1003'	
MISSED APCH: Reaching 1400', turn RIGHT to ILTAP climbing to 3000'.					
Alt Set: IN (hPa on req)		Trans level: FL 190		Trans alt: 18000'	
1. EYP DME required. 2. Max IAS 160 KT on final.					MSA EYP VOR



EYP DME	VOR	1.0
ALTITUDE	2000'	1684'



Gnd speed-Kts	70	90	100	120	140	160	PAPI-L	1400'	3000'	ILTAP
Descent Angle	2.98°	369	474	527	633	738				
VOR to MAP	2.9	2:29	1:56	1:44	1:27	1:15	1:05			

STRAIGHT-IN LANDING RWY 05				CIRCLE-TO-LAND			
MDA(H) 1390' (387')				Not Authorized Northwest of Airport			
A	2000m			Max Kts	MDA(H)		
B	2200m			100	1430' (402') -2100m		
C	2200m			135	1720' (692') -3400m		
D	NOT APPLICABLE			180	2410' (1382') -5000m		
NOT APPLICABLE				D	NOT APPLICABLE		

PANS OPS