

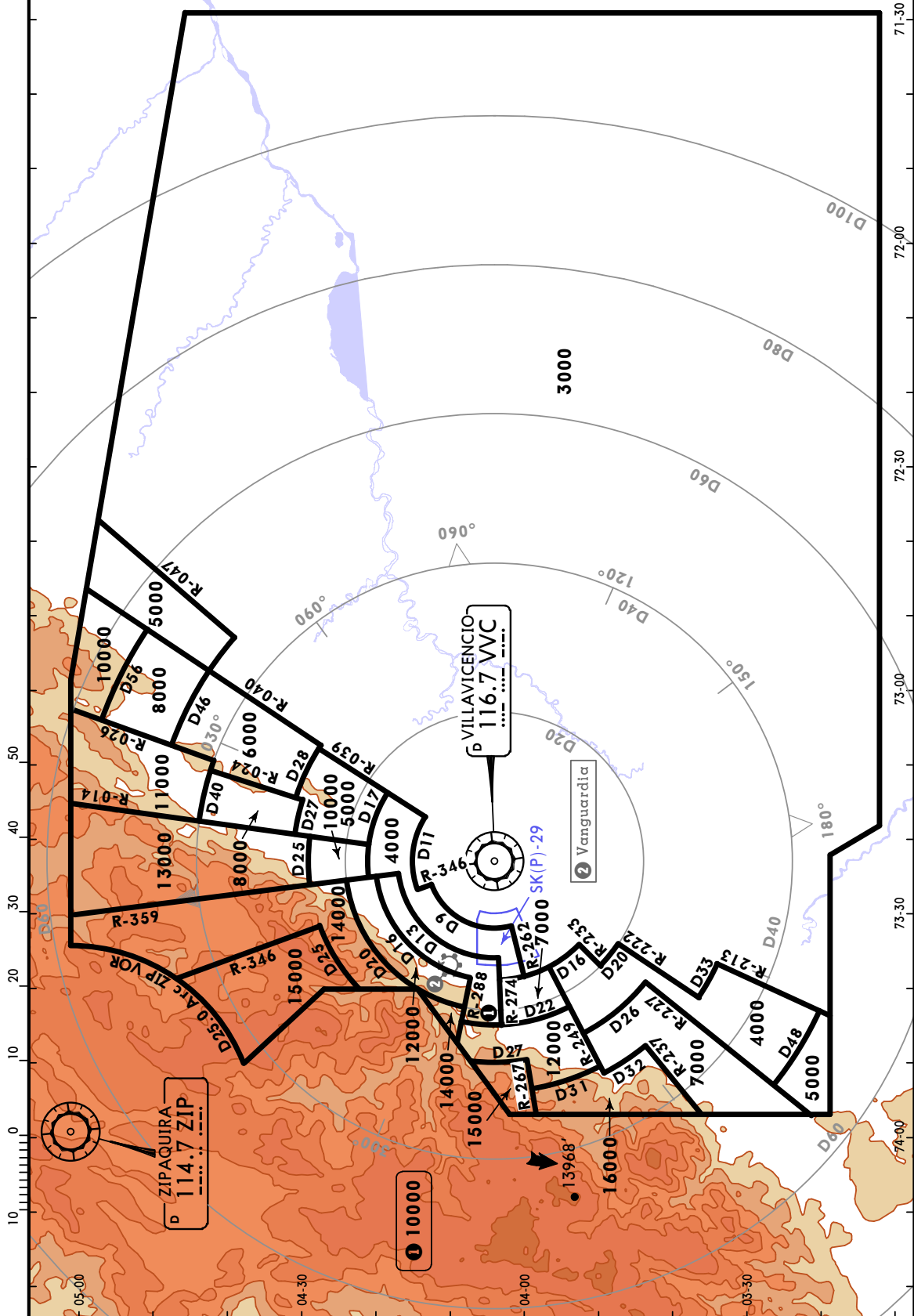
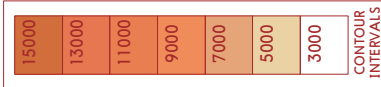
*VILLAVICENCIO Approach

119.3

Apt Elev

1381'

Alt Set: IN (hPa on req) Trans level: FL 190 Trans alt: 18000'

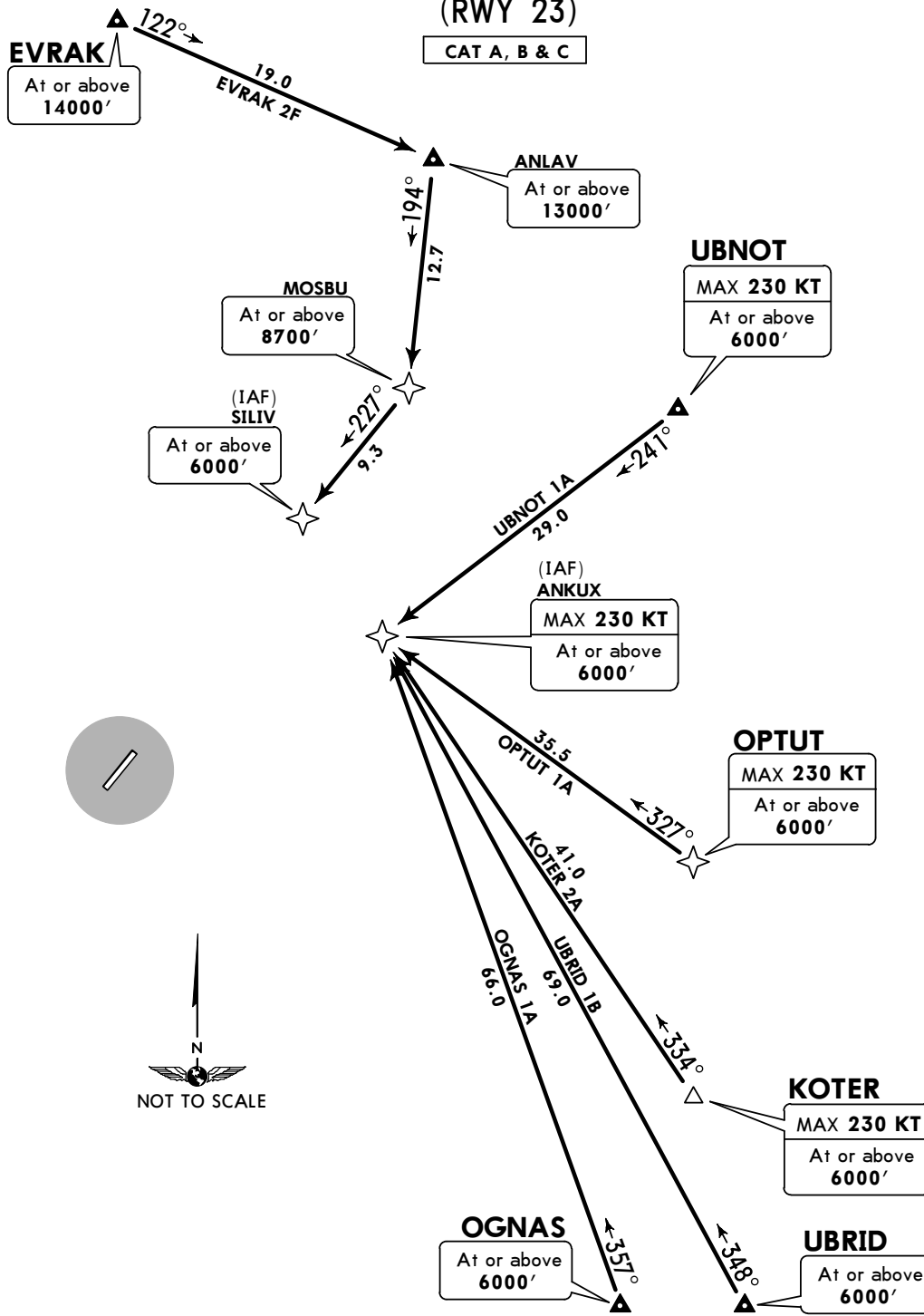


Apt Elev
1381'

Alt set: IN (hPa on req) Trans level: FL190 Trans alt: 18000'
1. RNAV 1.
2. GNSS required.

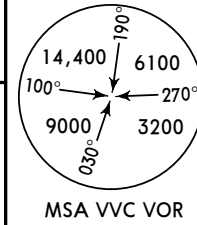
EVRAK 2F [EVRA2F]
KOTER 2A [KOTE2A]
OGNAS 1A [OGNA1A]
OPTUT 1A [OPTU1A]
UBNOT 1A [UBNO1A]
UBRID 1B [UBRI1B]
RNAV (GNSS) ARRIVALS
(RWY 23)

CAT A, B & C



Apt Elev
1381'

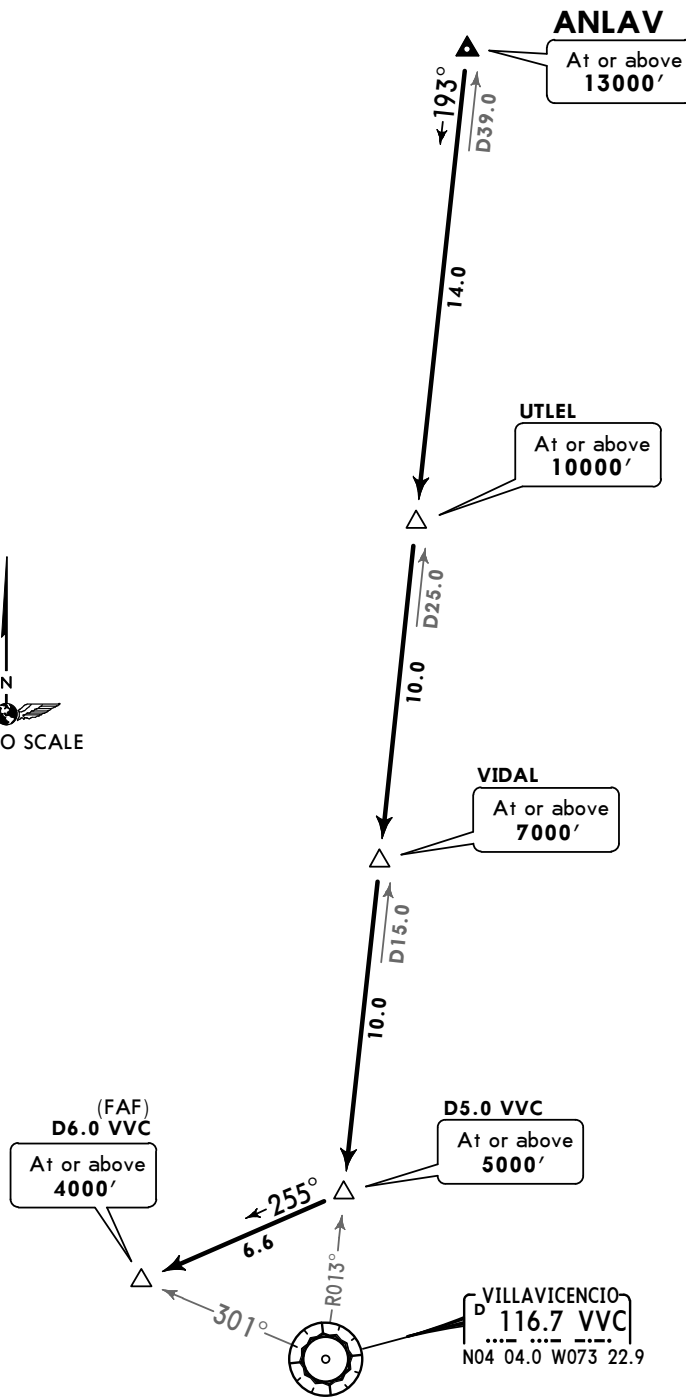
Alt set: IN (hPa on req) Trans level: FL190 Trans alt: 18000'



ANLAV 4A (ANLAV 4A) [ANLA4A]

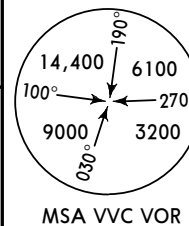
ARRIVAL
(RWY 05)

CAT A & B

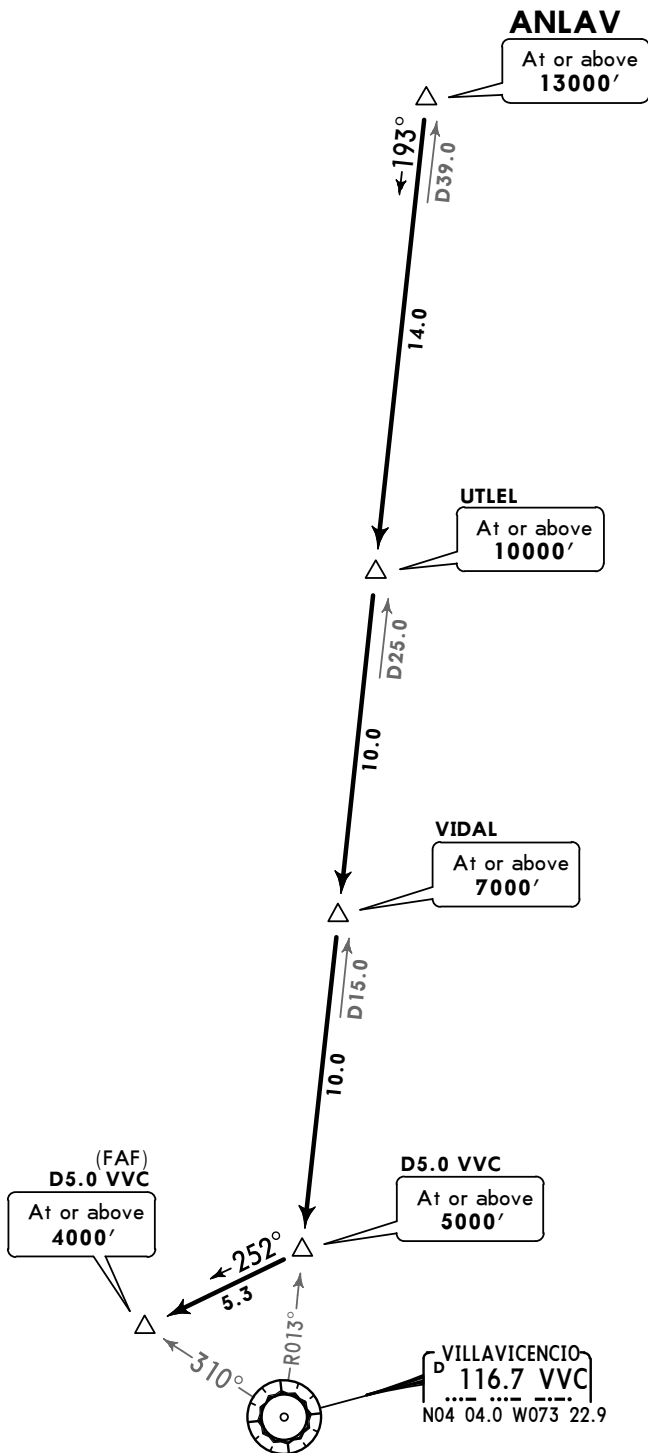


Apt Elev
1381'

Alt set: IN (hPa on req) Trans level: FL190 Trans alt: 18000'



ANLAV 2C (ANLAV 2C) [ANLA2C]
ARRIVAL
(RWY 23)
CAT A, B & C

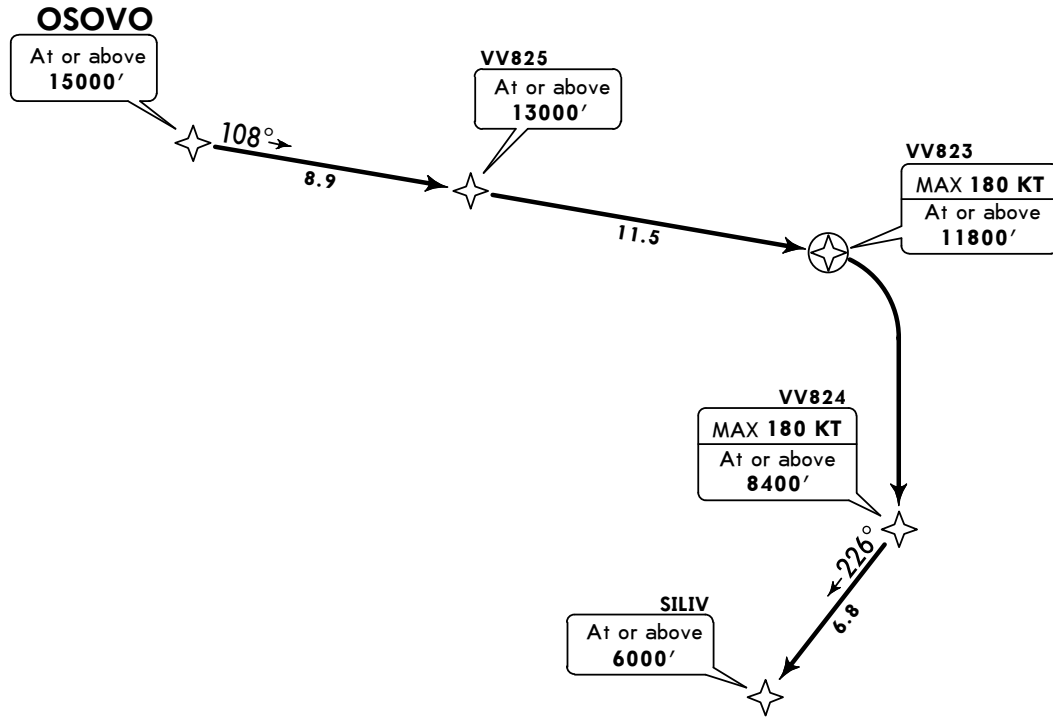


Apt Elev
1381'

Alt set: IN (hPa on req) Trans level: FL190 Trans alt: 18000'
RNAV 1.

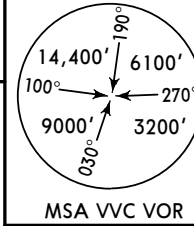
OSOVO 2H RNAV (GNSS) ARRIVAL [OSOV2H] (RWY 23)

CAT A, B & C



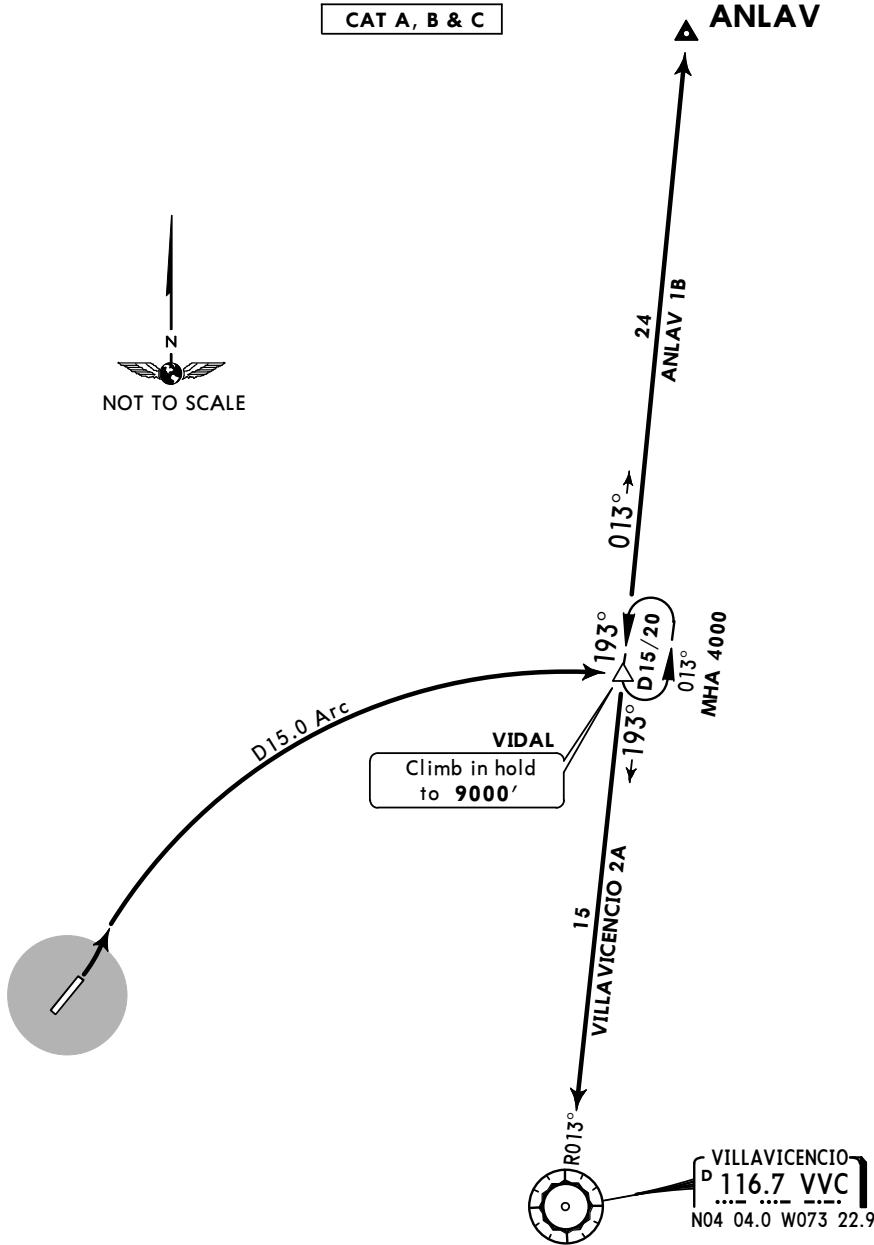
Apt Elev
1381'

Trans level: FL 190 Trans alt: 18000'
Do not use the holding patterns simultaneously and at the same flight level at VVC and VIDAL.



**ANLAV 1B (ANLAV 1B) [ANLA1B]
VILLAVICENCIO 2A (VVC 2A) [VVC2A]
DEPARTURES
(RWY 05)**

CAT A, B & C



These SIDs require a minimum climb gradient of 3.3%.

Gnd speed-KT	75	100	150	200	250	300
3.3% V/V (fpm)	251	334	501	668	835	1003

INITIAL CLIMB

After takeoff intercept and proceed via D15.0 Arc climbing to VIDAL, climb in holding pattern at VIDAL to 9000'.

SID	ROUTING
ANLAV 1B	Then proceed to ANLAV.
VILLAVICENCIO 2A	Then proceed to VVC.

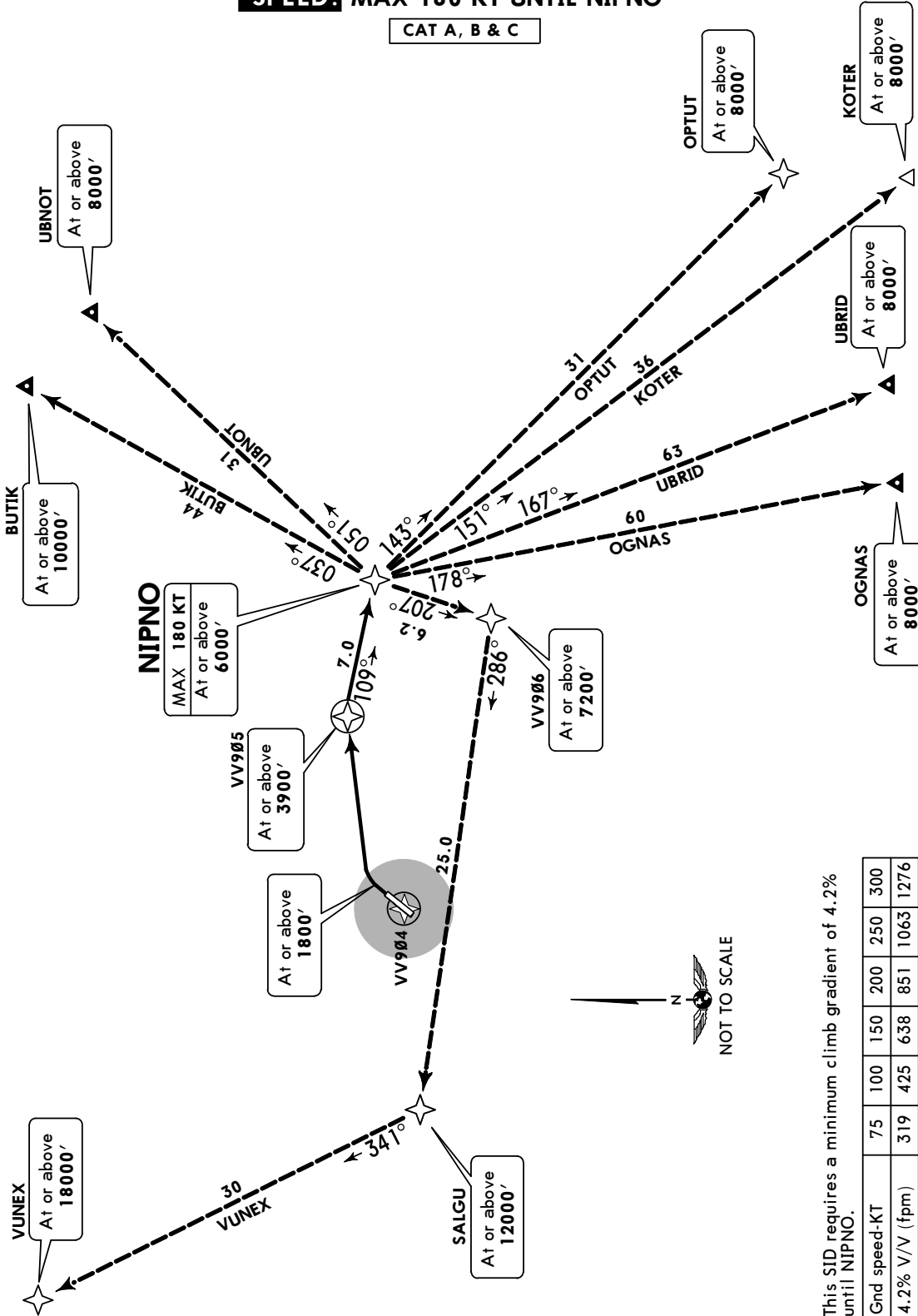
Apt Elev
1381'

Trans level: FL190 Trans alt: 18000'
1. GNSS required. 2 RNAV 1.

**NIPNO 1A RNAV (GNSS) DEPARTURE [NIPN1A]
TO BUTIK, KOTER, OGNAS, OPTUT, UBNOT, UBRID, VUNEX
(RWY 05)**

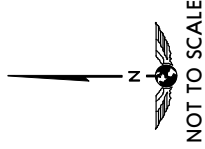
SPEED: MAX 180 KT UNTIL NIPNO

CAT A, B & C



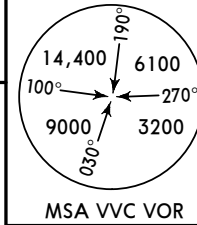
This SID requires a minimum climb gradient of 4.2% until NIPNO.

Gnd speed-KT	75	100	150	200	250	300
4.2% V/V (fpm)	319	425	638	851	1063	1276



Apt Elev
1381'

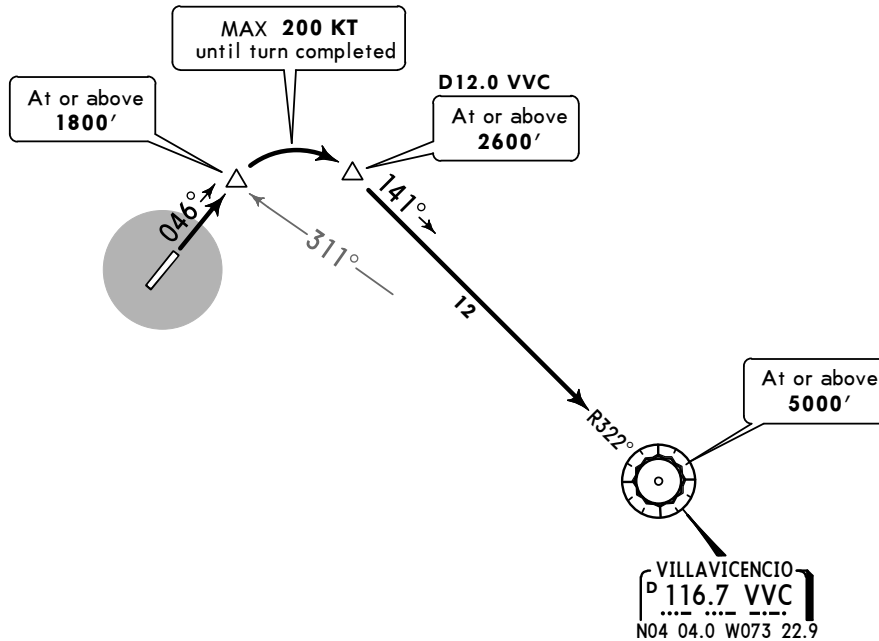
Trans level: FL190 Trans alt: 18000'



VILLAVICENCIO 1B DEPARTURE

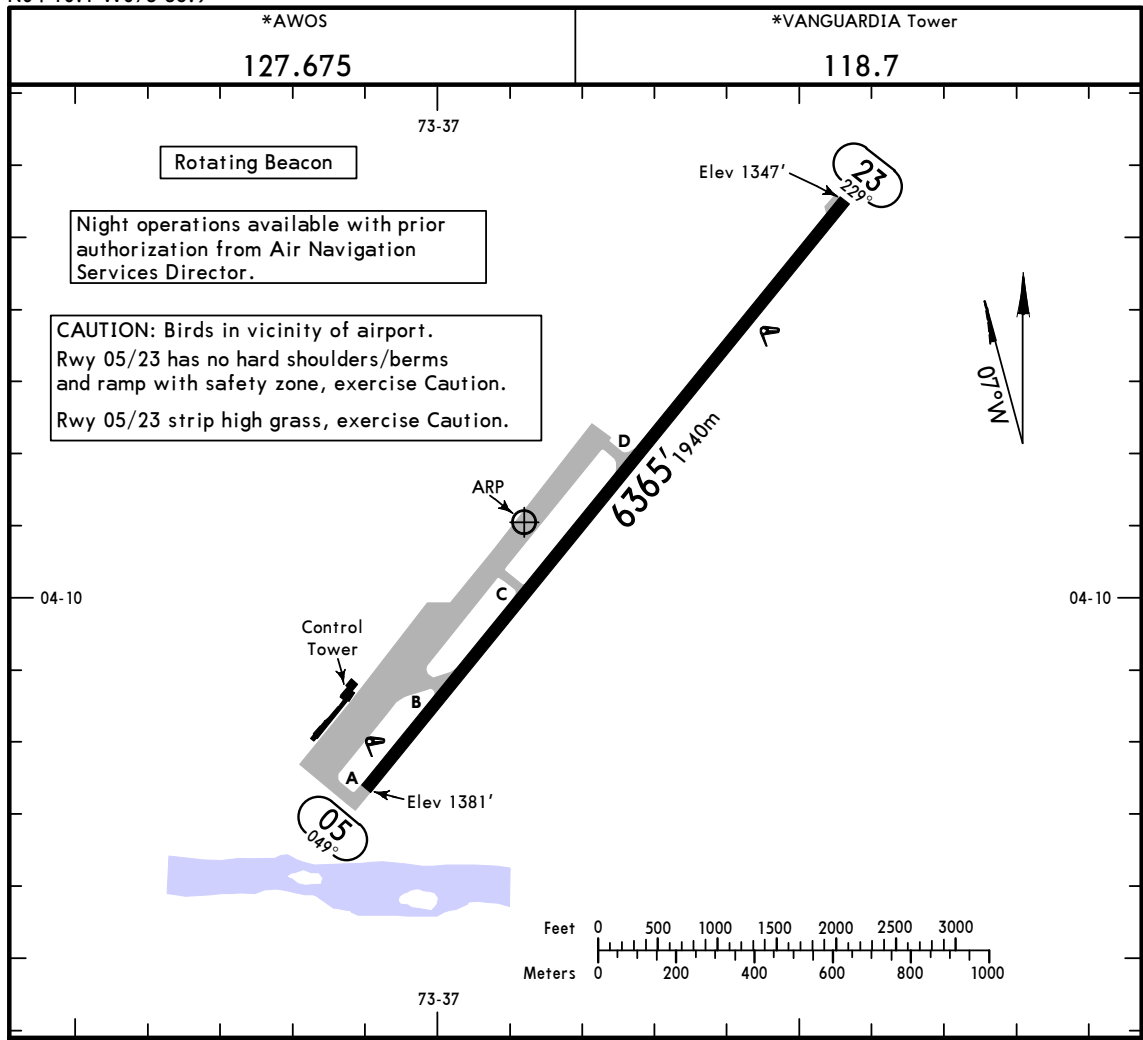
[VVC1B]
(RWY 05)

CAT A, B & C



These SIDs require a minimum climb gradient of 3.3%.

Gnd speed-KT	75	100	150	200	250	300
3.3% V/V (fpm)	251	334	501	668	835	1003



ADDITIONAL RUNWAY INFORMATION

RWY	MIRL	PAPI-R (angle 3.0°)	USABLE LENGTHS		TAKE-OFF	WIDTH
			Threshold	Glide Slope		
05 1					6562' 2000m	98'
23		PAPI-L (angle 3.0°)				30m

1 Threshold displaced 197' (60m).

TAKE-OFF	
All Rwys	
1 or More Eng	1600m
3 or More Eng	800m

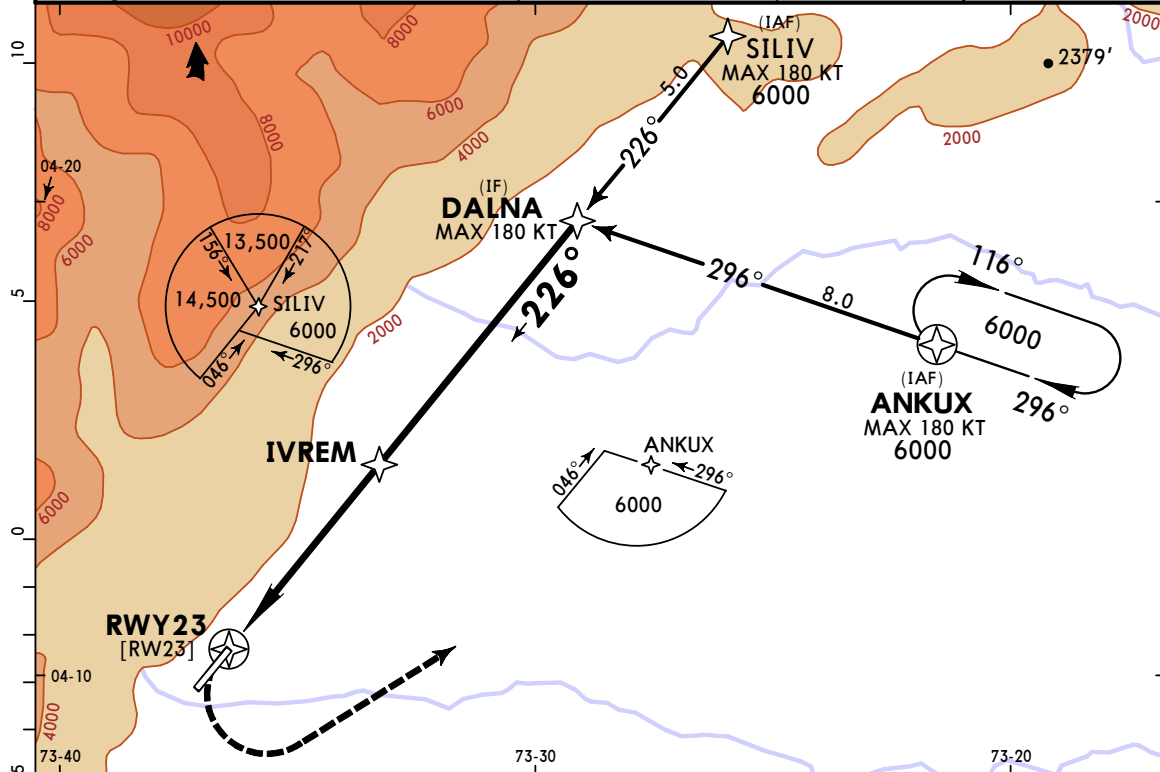
SKVV/VVC
VANGUARDIA

25 DEC 20
Eff 31 Dec

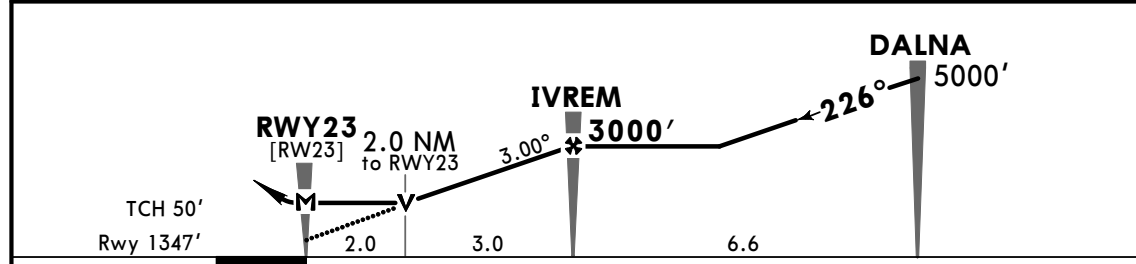
(12-1) CAT A, B & C

VILLAVICENCIO, COLOMBIA
RNP Rwy 23

*AWOS 127.675		*VILLAVICENCIO Approach 119.3		*VANGUARDIA Tower 118.7		
RNAV	Final Apch Crs 226°	IVREM 3000' (1653')	LNAV MDA(H) 2030' (683')	Apt Elev 1381' Rwy 1347'	TAA 25 NM SILIV, ANKUX	
MISSED APCH: Turn LEFT and proceed direct to ANKUX holding pattern climbing to 6000'. Missed apch climb gradient mim 4.0%.						
Alt Set: IN (hPa on req)		Trans level: FL 190		Trans alt: 18000'		
RNP Apch Holding at ANKUX and VVC VOR simultaneously at the same altitude is prohibited.						



DIST to THR	3.0	4.0	5.0	6.0	7.0
ALTITUDE	2330'	2644'	2960'	3280'	3600'



Gnd speed-Kts	70	90	100	120	140	160	PAPI-L 6000' LT	D	ANKUX	
Descent Angle	3.00°	372	478	531	637	743				849
MAP at RWY23										
FAF to MAP	5.0	4:17	3:20	3:00	2:30	2:09				1:53

STRAIGHT-IN LANDING RWY 23
LNAV
MDA(H) **2030'** (683')

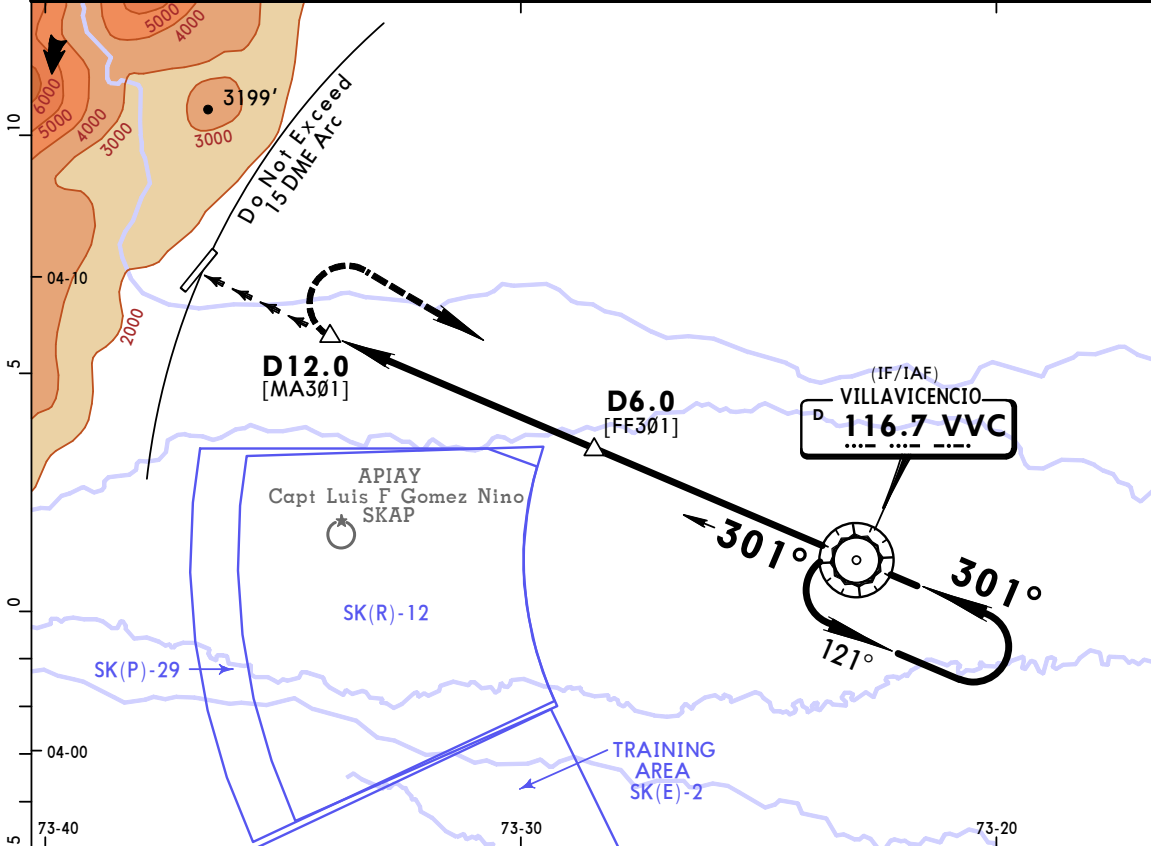
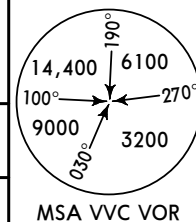
A	
B	3400m
C	3600m
D	NOT APPLICABLE

PANS OPS

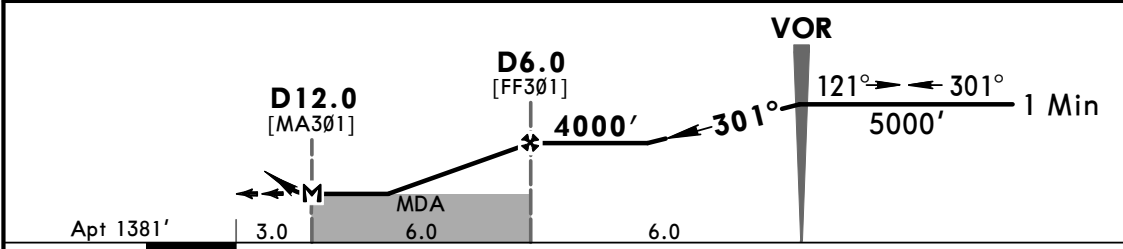
CHANGES: Procedure title.

© JEPPESEN, 2014, 2020. ALL RIGHTS RESERVED.

*AWOS 127.675		*VILLAVICENCIO Approach 119.3		*VANGUARDIA Tower 118.7	
VOR VVC 116.7	Final Apch Crs 301°	D6.0 4000' (2619')	MDA(H) Refer to Minimums	Apt Elev 1381'	
MISSED APCH: At D12.0 VVC VOR turn RIGHT to VVC VOR hold climbing to 5000'. Do not exceed 15 DME Arc.					
Alt Set: IN (hPa on req) 1. VVC VOR/DME required.		Trans level: FL 190		Trans alt: 18000'	



VVC DME	12.0	11.0	10.0	9.0	8.0	6.0
ALTITUDE	2760'	2970'	3180'	3390'	3600'	4000'



Gnd speed-Kts	70	90	100	120	140	160	Lighting - Refer to Airport Chart	5000'	VVC 116.7
MAP at D12.0 or FAF to MAP	6.0	5:09	4:00	3:36	3:00	2:34			

CIRCLE-TO-LAND Not Authorized Northwest of the Airport	
Max Kts	MDA(H)
A 100	2760' (1379') - 5000m
B 135	
C	NOT APPLICABLE
D	

PANS OPS

SKVV/VVC
VANGUARDIA

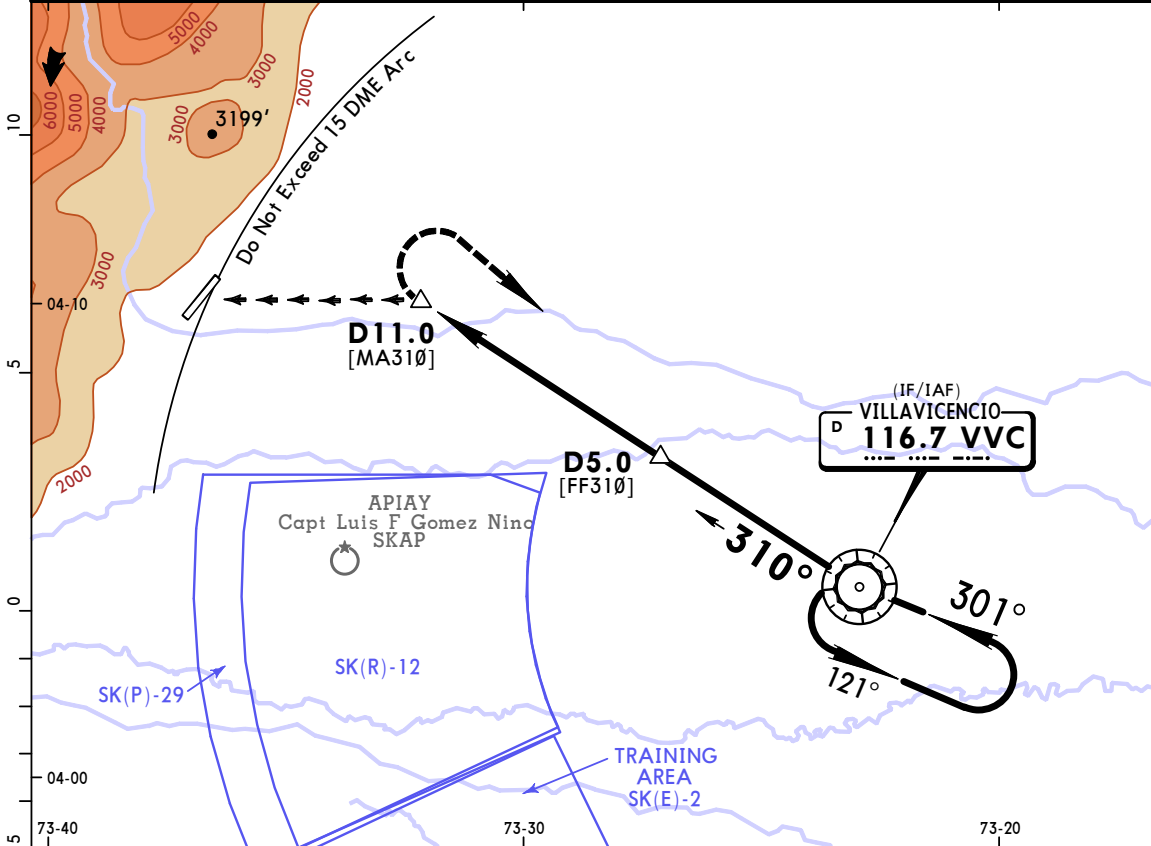
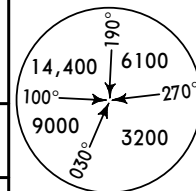
22 JAN 21
Eff 28 Jan

13-2

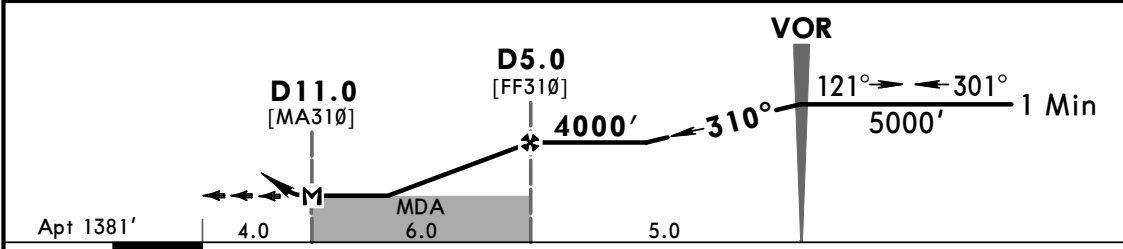
CAT A, B & C

VILLAVICENCIO, COLOMBIA
VOR-B Rwy 23

*AWOS 127.675		*VILLAVICENCIO Approach 119.3		*VANGUARDIA Tower 118.7	
VOR VVC 116.7	Final Apch Crs 310°	D5.0 4000' (2619')	MDA(H) Refer to Minimums	Apt Elev 1381'	
MISSED APCH: At D11.0 VVC VOR turn RIGHT to VVC VOR hold climbing to 5000'. Do not exceed 15 DME Arc.					
Alt Set: IN (hPa on req)		Trans level: FL 190		Trans alt: 18000'	
1. VVC VOR/DME required.			MSA VVC VOR		



VVC DME	11.0	10.0	9.0	8.0	7.0	6.0	5.0
ALTITUDE	2150'	2380'	2700'	3010'	3340'	3670'	4000'



Gnd speed-Kts	70	90	100	120	140	160	Lighting - Refer to Airport Chart	5000'	VVC 116.7
MAP at D11.0 or FAF to MAP	6.0	5:09	4:00	3:36	3:00	2:34			

CIRCLE-TO-LAND	
Not Authorized Northwest of the Airport	
MDA(H)	
A	100
B	135
C	2150' (769') - 3600m
D	2150' (769') - 4000m
NOT APPLICABLE	

PANS OPS

1 MAX 160 KT

CHANGES: Procedure.

© JEPPESEN, 2014, 2021. ALL RIGHTS RESERVED.