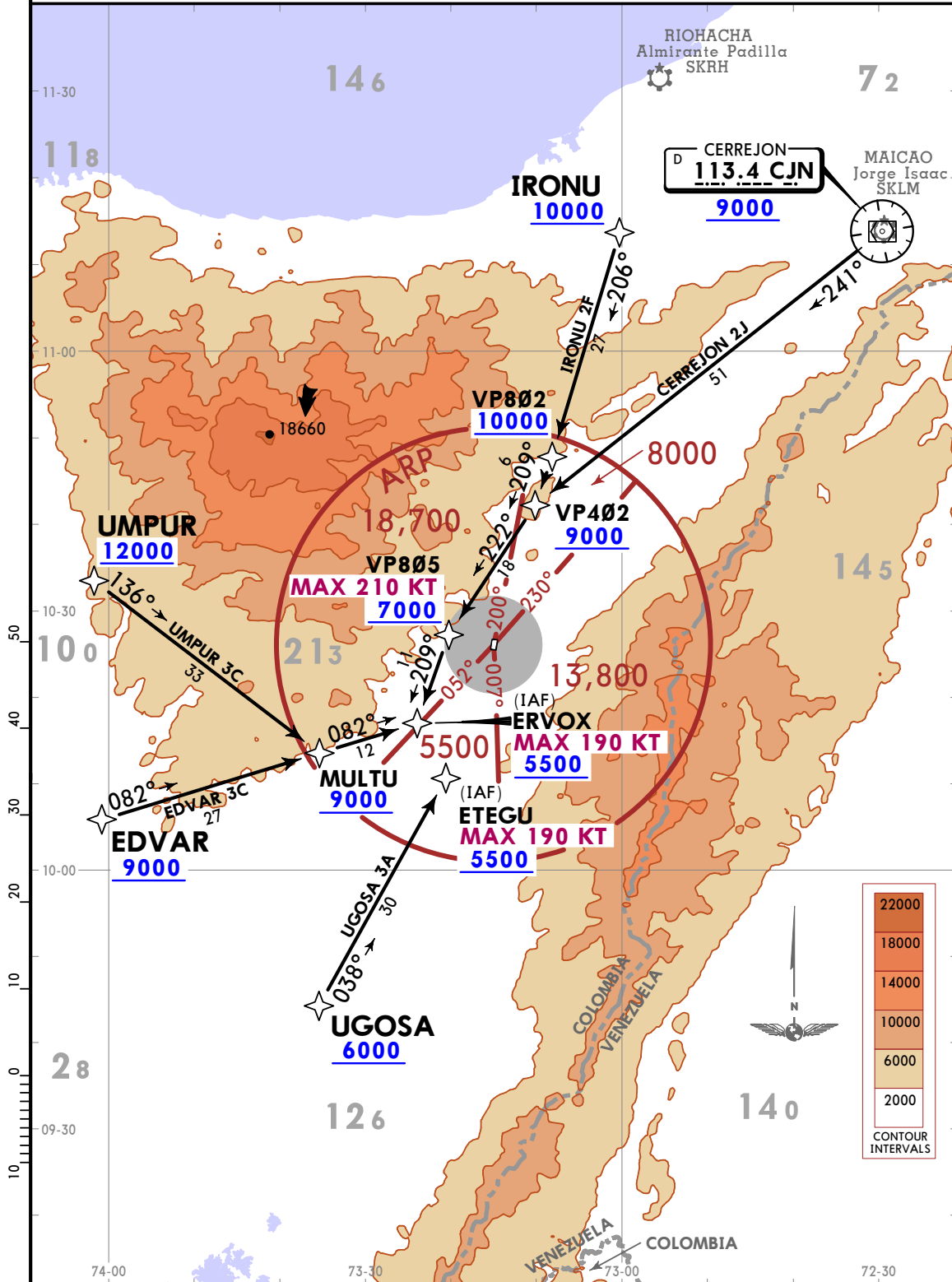


Apt Elev
485

Alt Set: IN (hPa on req) Trans level: FL190
1. RNP 1 or RNAV 1.
2. GNSS required.

CERREJON 2J [CJN2J], EDVAR 3C [EDVA3C], IRONU 2F [IRON2F]
UGOSA 3A [UGOS3A], UMPUR 3C [UMPU3C]
RNAV (GNSS) ARRIVALS
(RWY 02)

CAT A, B & C



SKVP/VUP

ALFONSO LOPEZ PUMAREJO

11 JUN 21

JEPPESEN VALLEDUPAR, COLOMBIA

10-2A Eff 17 Jun

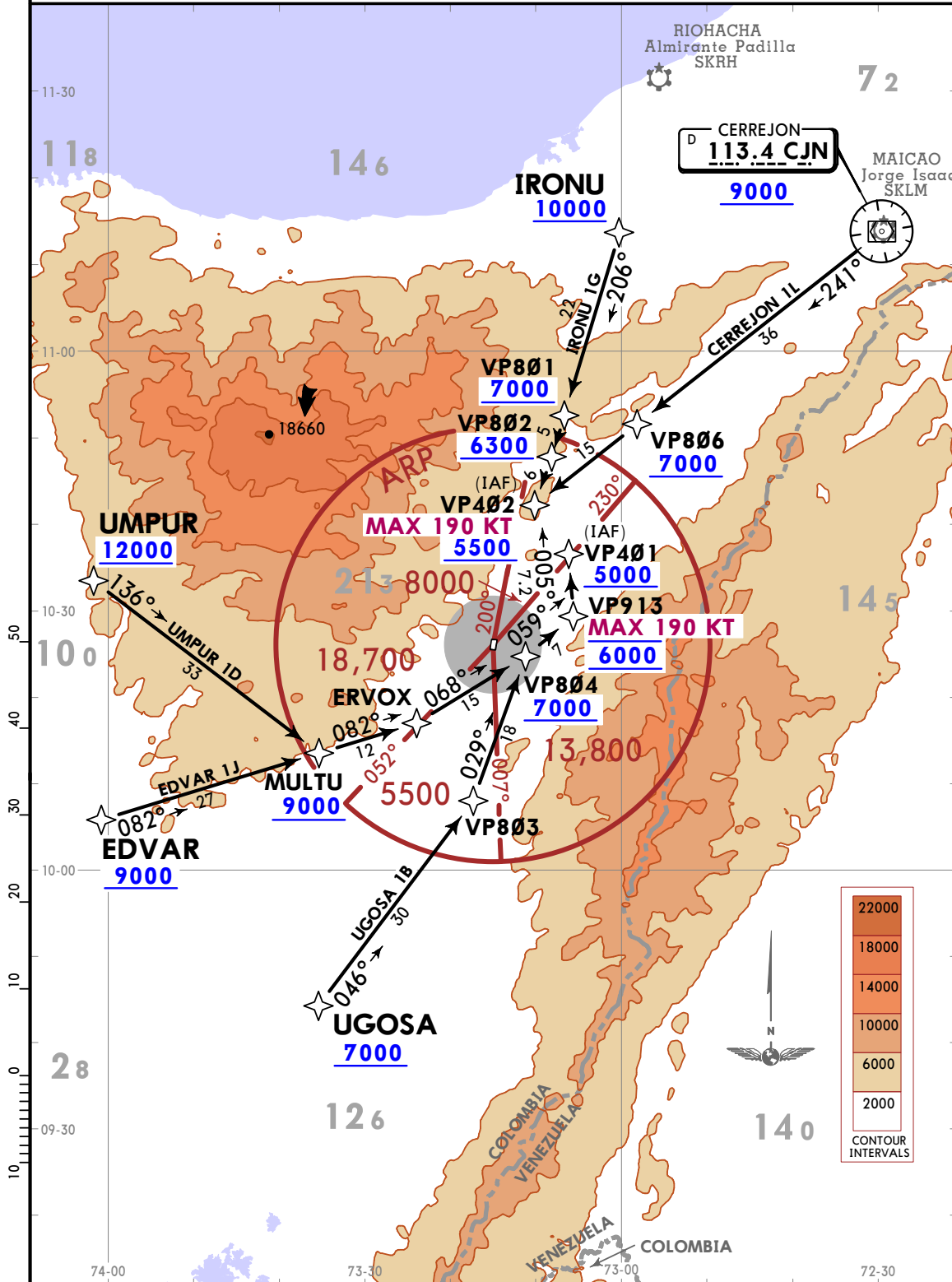
RNAV STAR

Apt Elev
485

Alt Set: IN (hPa on req) Trans level: FL190
1. RNP 1 or RNAV 1.
2. GNSS required.

CERREJON 1L [CJN1L], EDVAR 1J [EDVA1J], IRONU 1G [IRON1G]
UGOSA 1B [UGOS1B], UMPUR 1D [UMPU1D]
RNAV (GNSS) ARRIVALS
(RWY 20)

CAT A, B & C



CHANGES: None.

© JEPPESEN, 2021. ALL RIGHTS RESERVED.

Apt Elev
485

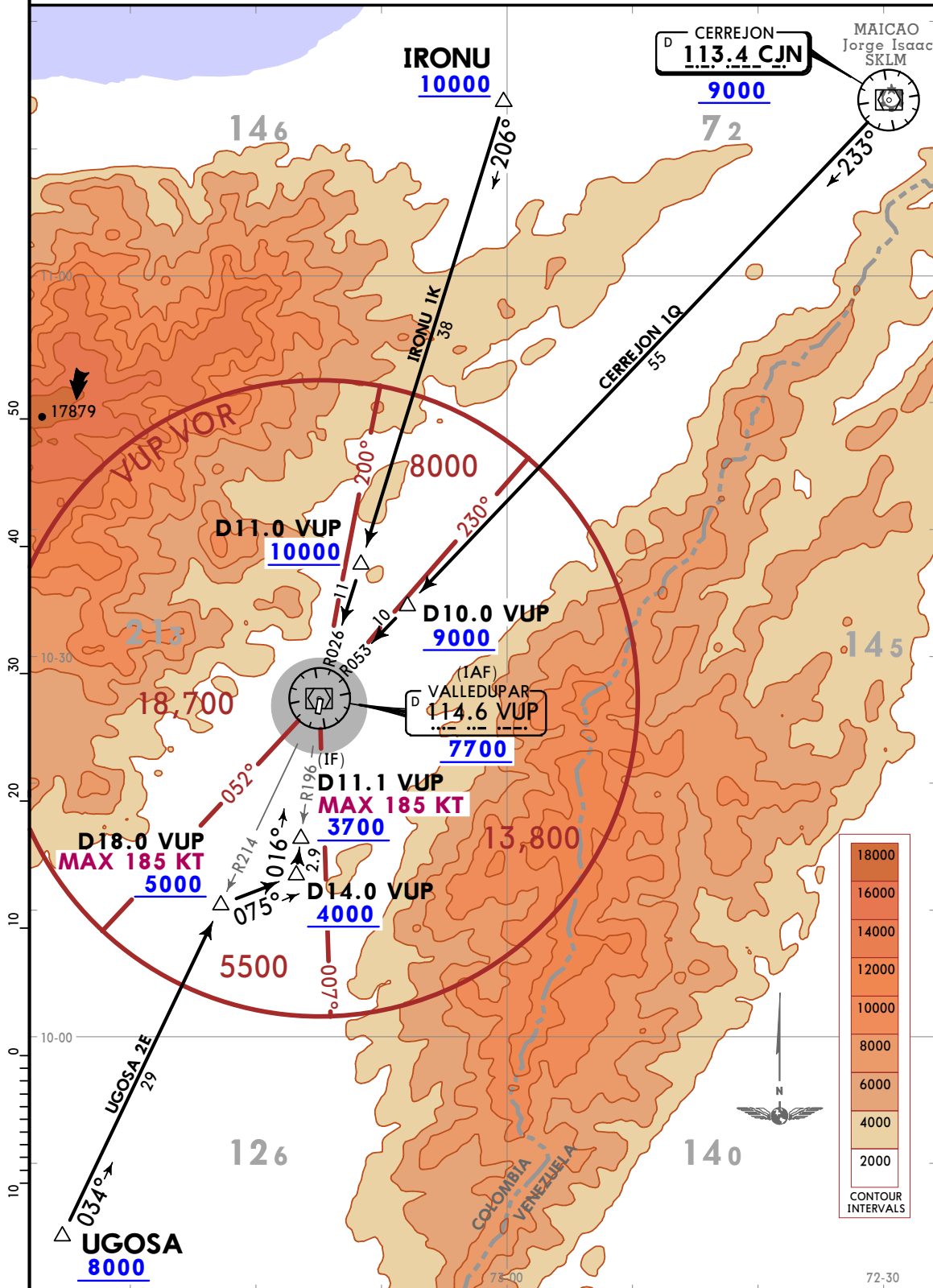
Alt Set: IN (hPa on req)

Trans level: FL190

CERREJON 1Q [CJN1Q], IRONU 1K [IRON1K], UGOSA 2E [UGOS2E]

ARRIVALS
(RWY 02)

CAT A, B & C



SKVP/VUP

ALFONSO LOPEZ PUMAREJO

11 JUN 21

JEPPESEN VALLEDUPAR, COLOMBIA

10-2C Eff 17 Jun

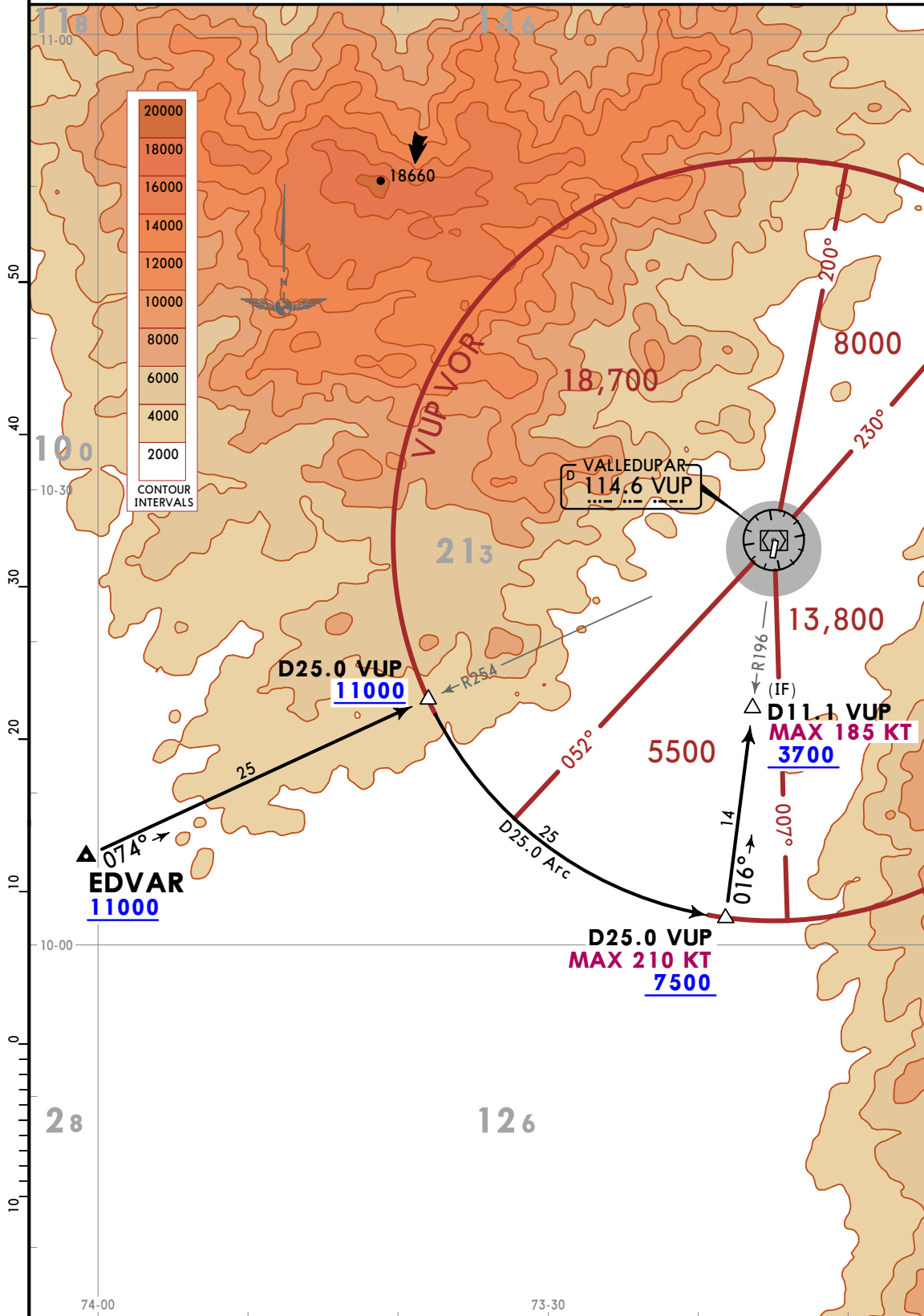
STAR

Apt Elev
485

Alt Set: IN (hPa on req) Trans level: FL190

EDVAR 1H ARRIVAL [EDVA1H] (RWY 02)

CAT A, B & C



CHANGES: None.

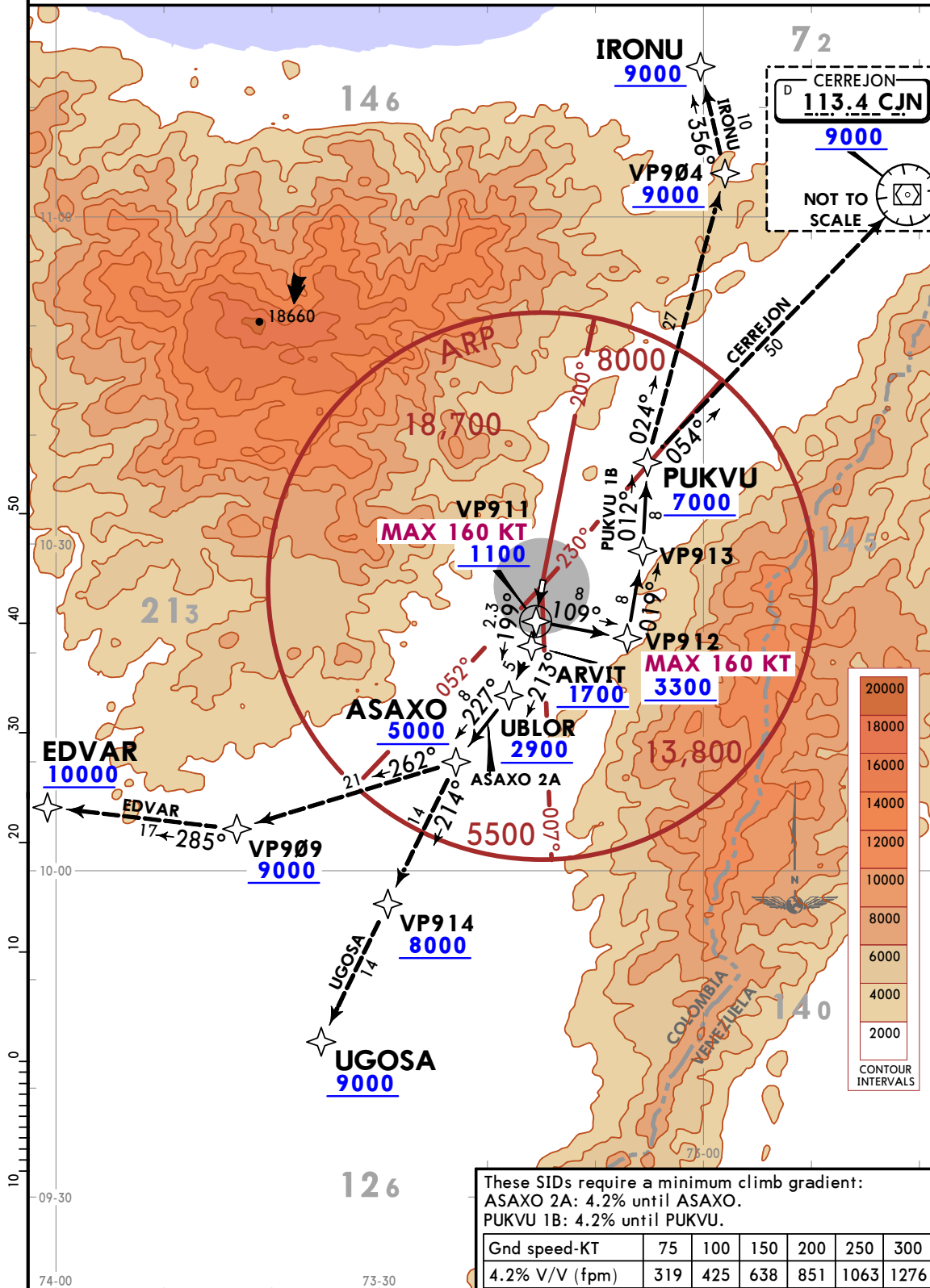
© JEPPESEN, 2021. ALL RIGHTS RESERVED.

Apt Elev
485

Trans alt: 18000
1. RNP 1 or RNAV 1.
2. GNSS required.

**ASAXO 2A [ASAX2A], PUKVU 1B [PUKV1B]
RNAV (GNSS) DEPARTURES
(RWY 20)**

CAT A, B & C

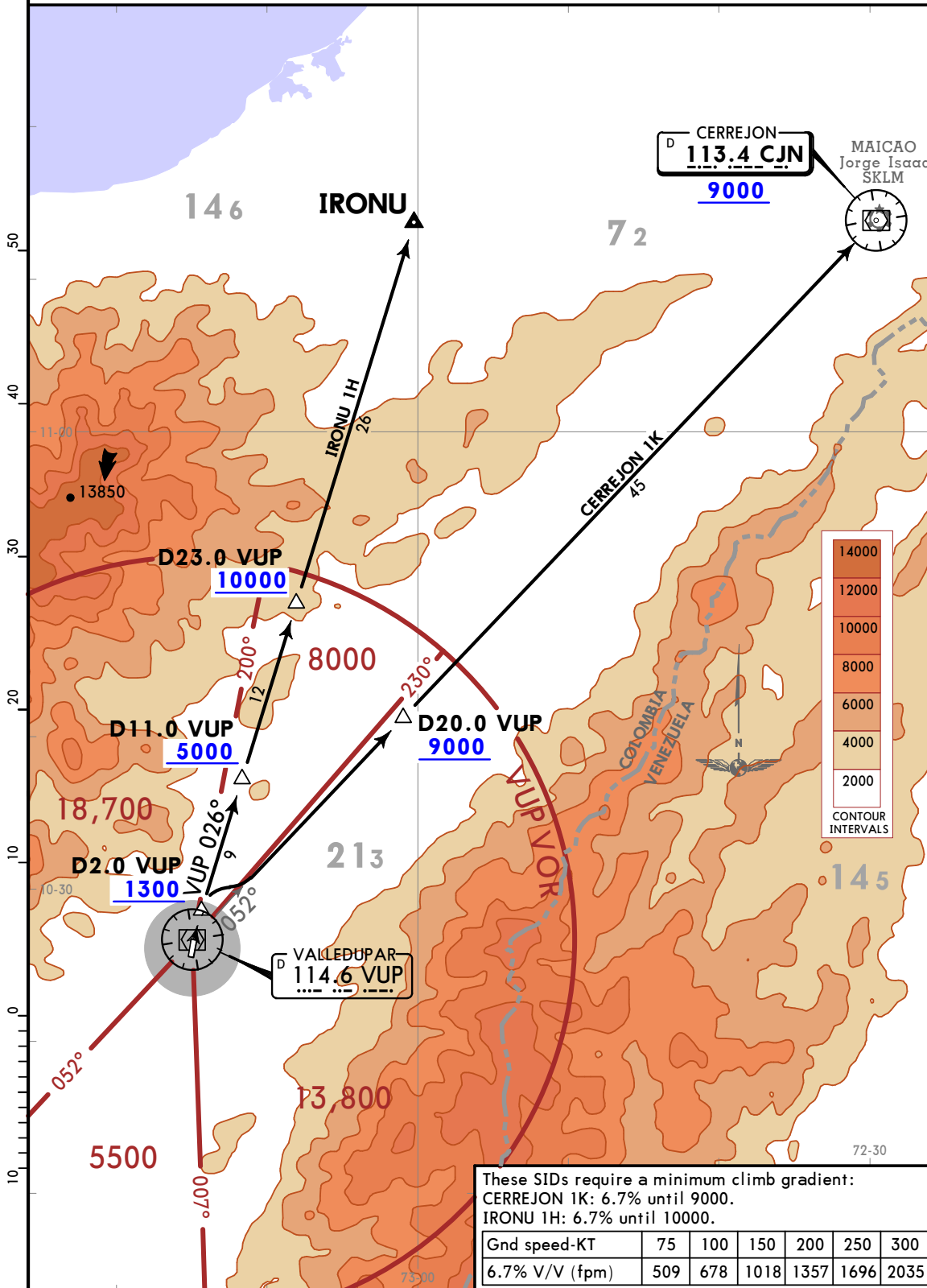


Apt Elev
485

Trans alt: 18000

CERREJON 1K [CJN1K], IRONU 1H [IRON1H]
DEPARTURES
(RWY 02)

CAT A, B & C



Apt Elev
485

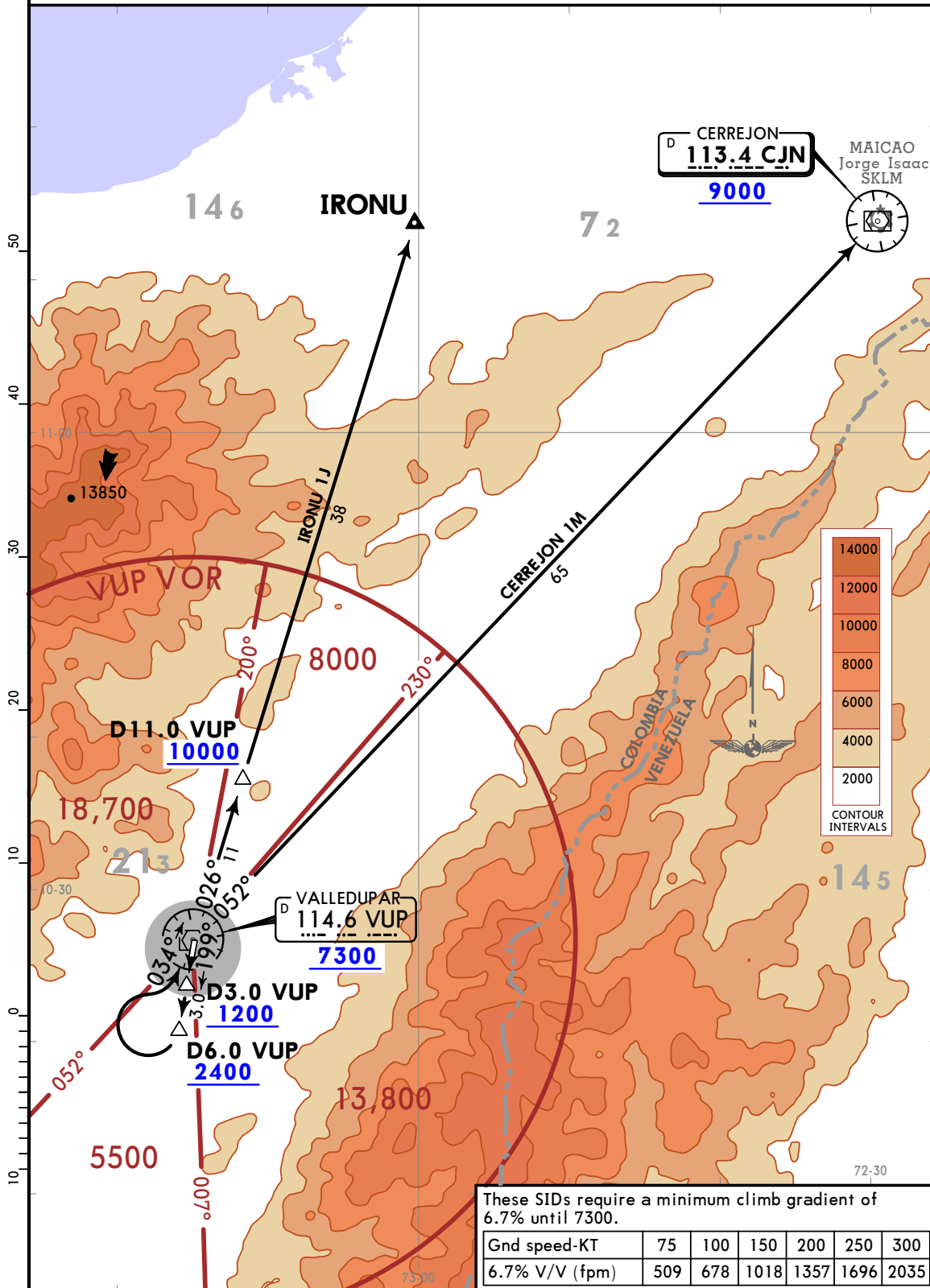
Trans alt: 18000

CERREJON 1M [CJN1M], IRONU 1J [IRON1J]

DEPARTURES

(RWY 20)

CAT A, B & C



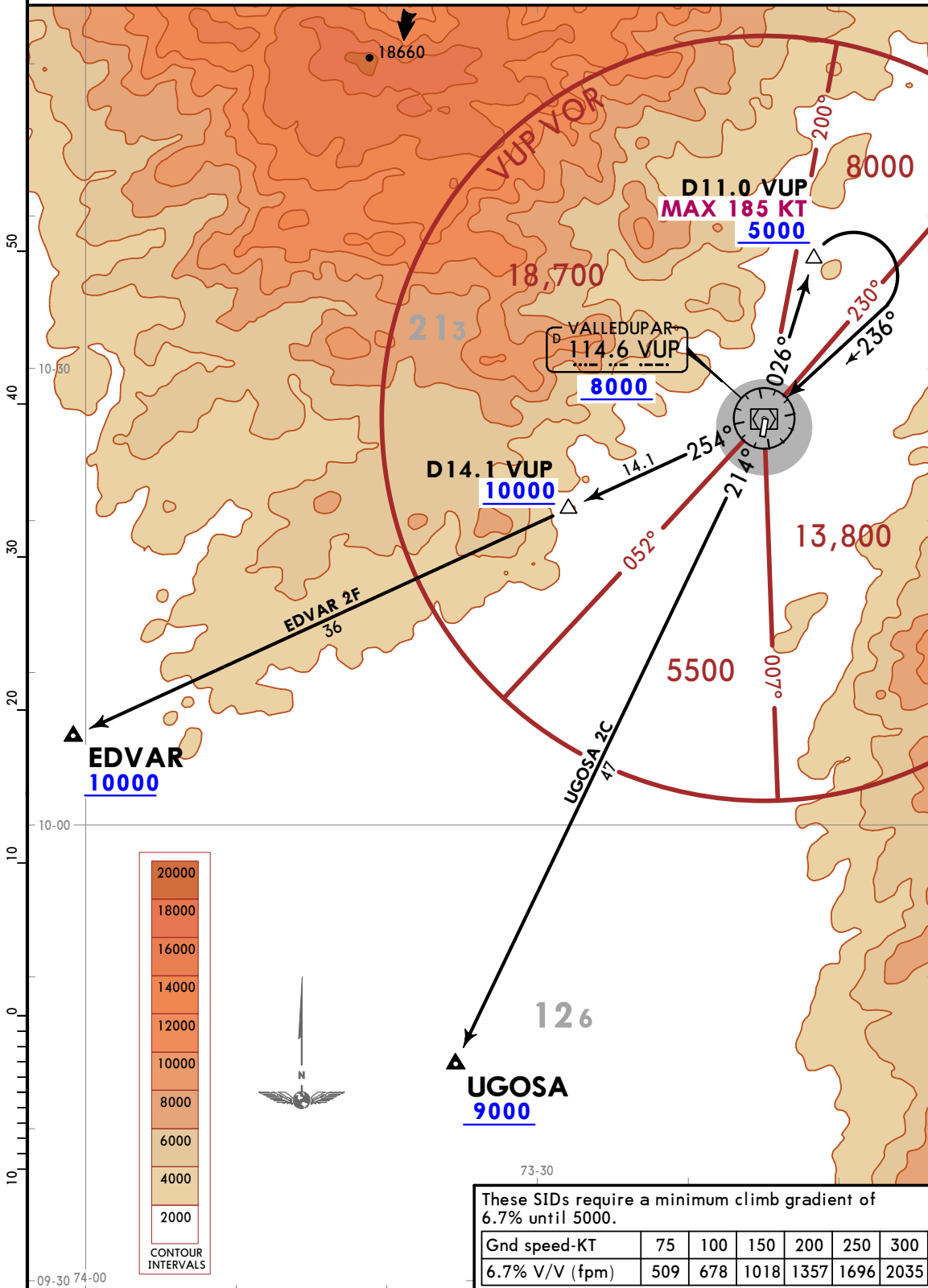
Apt Elev
485

Trans alt: 18000

EDVAR 2F [EDVA2F], UGOSA 2C [UGOS2C]

DEPARTURES
(RWY 02)

CAT A, B & C



Apt Elev
485

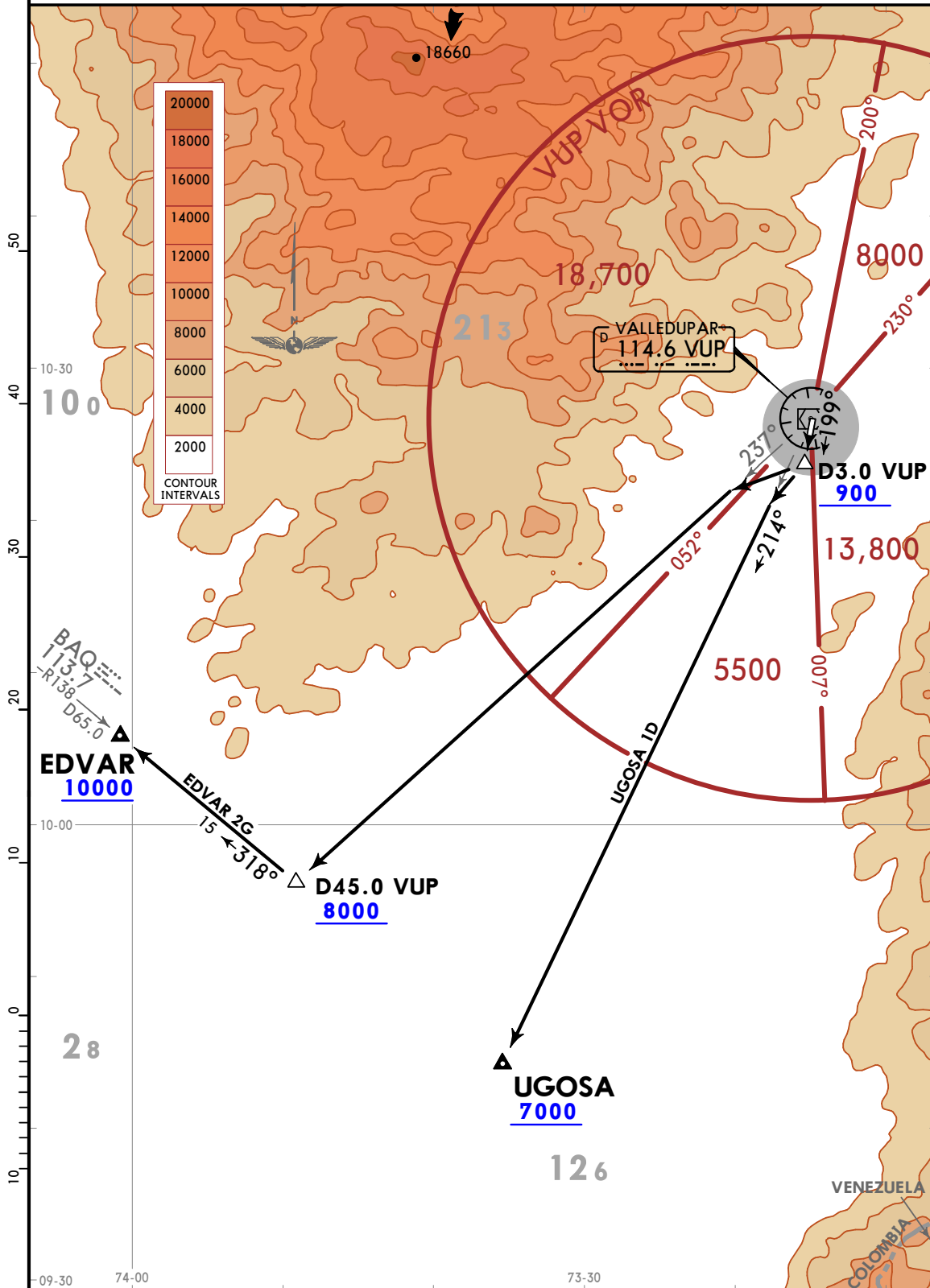
Trans alt: 18000

EDVAR 2G [EDVA2G], UGOSA 1D [UGOS1D]

DEPARTURES

(RWY 20)

CAT A, B & C

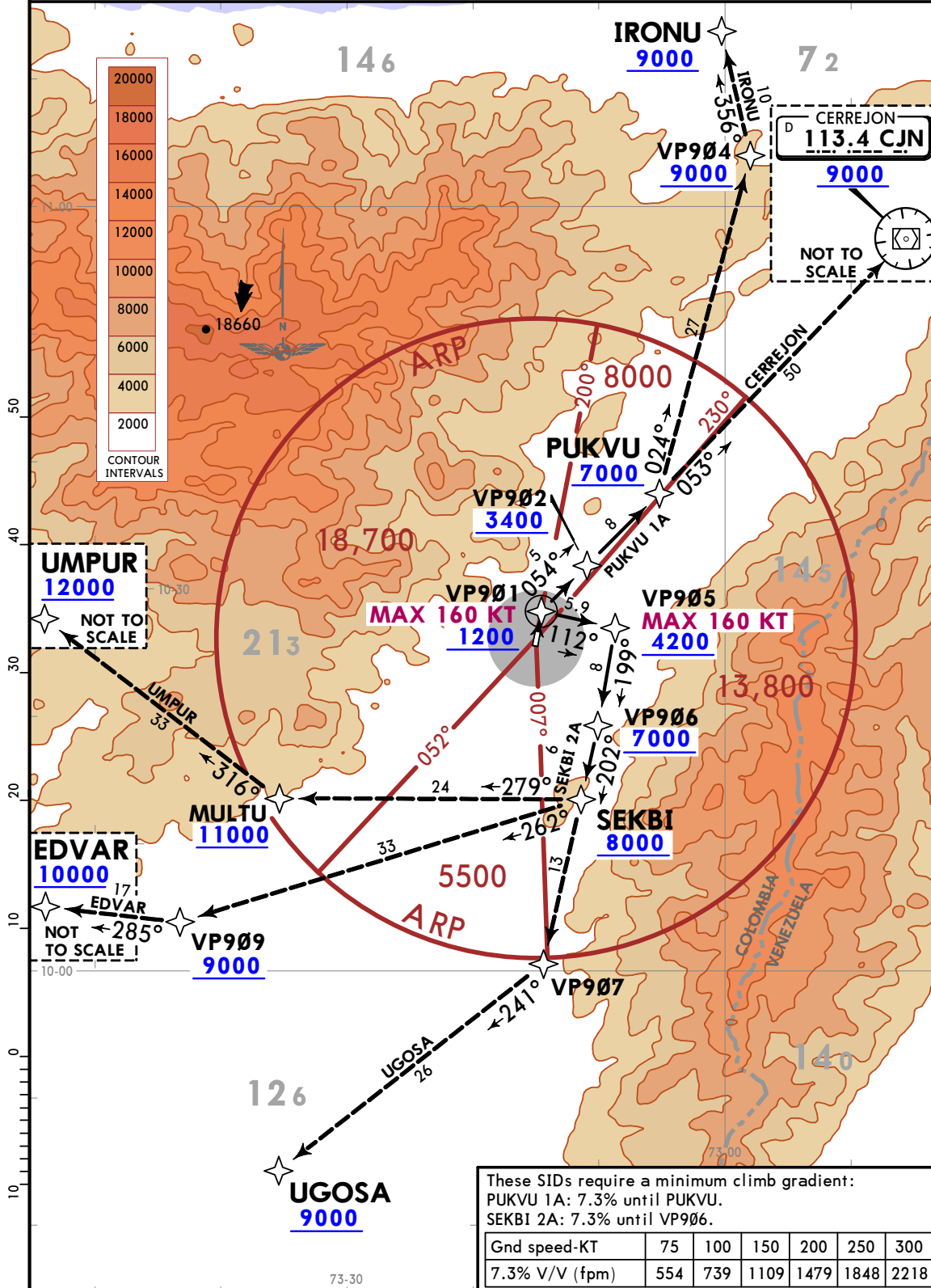


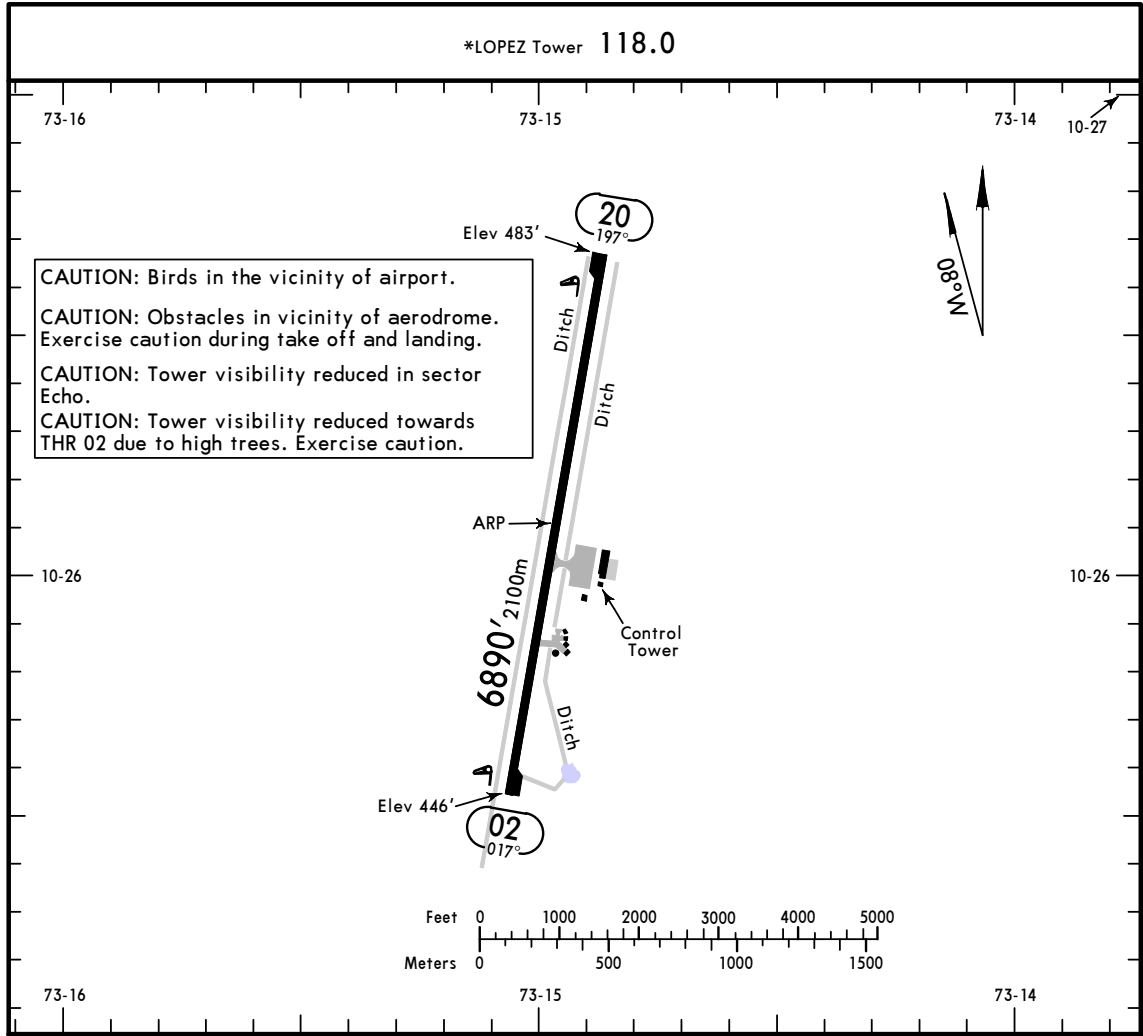
Apt Elev
485

Trans alt: 18000
1. RNP 1 or RNAV 1.
2. GNSS required.

PUKVU 1A [PUKV1A], SEKBI 2A [SEKB2A]
RNAV (GNSS) DEPARTURES
(RWY 02)

CAT A, B & C





ADDITIONAL RUNWAY INFORMATION

RWY	USABLE LENGTHS	LANDING BEYOND		TAKE-OFF	WIDTH
		Threshold	Glide Slope		
02 20	MIRL PAPI (angle 3.0°)				115' 35m

TAKE-OFF

	All Rwys
1 or More Eng	1600m
3 or More Eng	800m

SKVP/VUP

JEPPESEN

VALLEDUPAR, COLOMBIA

11 JUN 21

(12-1)

Eff 17 Jun

CAT A, B & C

RNP Rwy 02

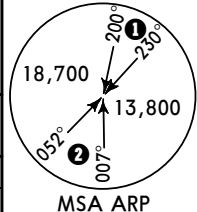
ALFONSO LOPEZ PUMAREJO

MISSED APCH CLIMB GRADIENT MIM 5.0%

*LOPEZ Tower 118.0

BRIEFING STRIP™

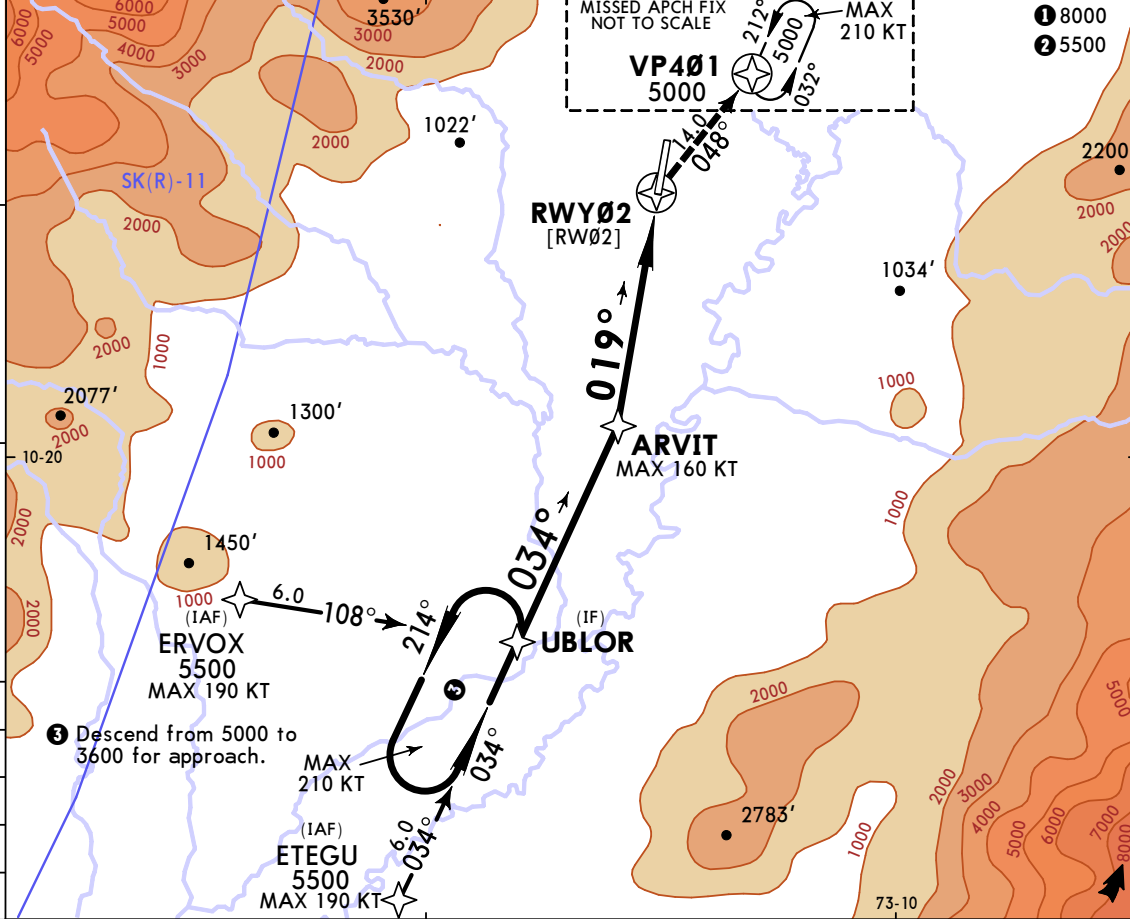
RNAV	Final Apch Crs 019°	ARVIT 2100' (1654')	LNAV/CDFA MDA(H) (CONDITIONAL) 900' (454')	Apt Elev 485' Rwy 446'
------	----------------------------------	-------------------------------	--	---------------------------



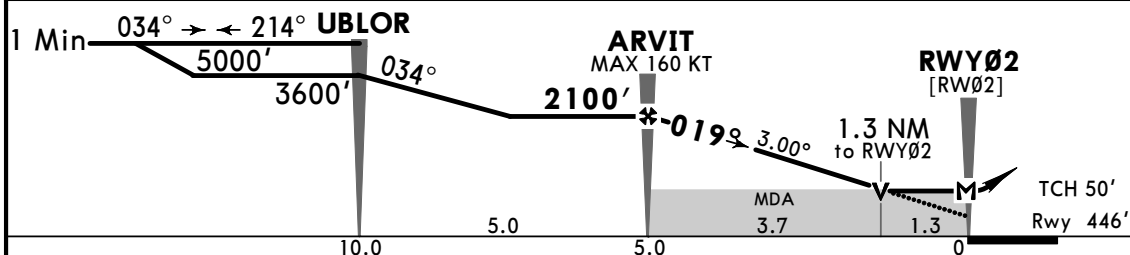
MISSED APCH: Turn RIGHT climbing to VP401 holding pattern and 5000', and MAX 160 KT until end of turn. Missed Apch climb gradient mim 5.0%.

Alt Set: IN (hPa on req) Trans level: FL 190 Trans alt: 18000'

RNP Apch



DIST to THR	5.0	4.0	3.0	2.0	1.3
ALTITUDE	2080'	1760'	1443'	1128'	900'



Gnd speed-Kts	70	90	100	120	140	160	PAPI	5000' to VP401 RT
Descent Angle 3.00°	372	478	531	637	743	849		
MAP at RWY02								
ARVIT to MAP	5.0							

STRAIGHT-IN LANDING RWY02

LNAV/CDFA MDA(H) 900' (454')		LNAV MDA(H) 900' (454')	
A			
B	1500m		2300m
C	2400m		2500m
D	NOT APPLICABLE		NOT APPLICABLE

PANS OPS

CHANGES: Minimums, speed restriction.

© JEPPESEN, 2014, 2021. ALL RIGHTS RESERVED.

SKVP/VUP

3 SEP 21
Eff 9 Sep

JEPPESEN

VALLEDUPAR, COLOMBIA

ALFONSO LOPEZ PUMAREJO

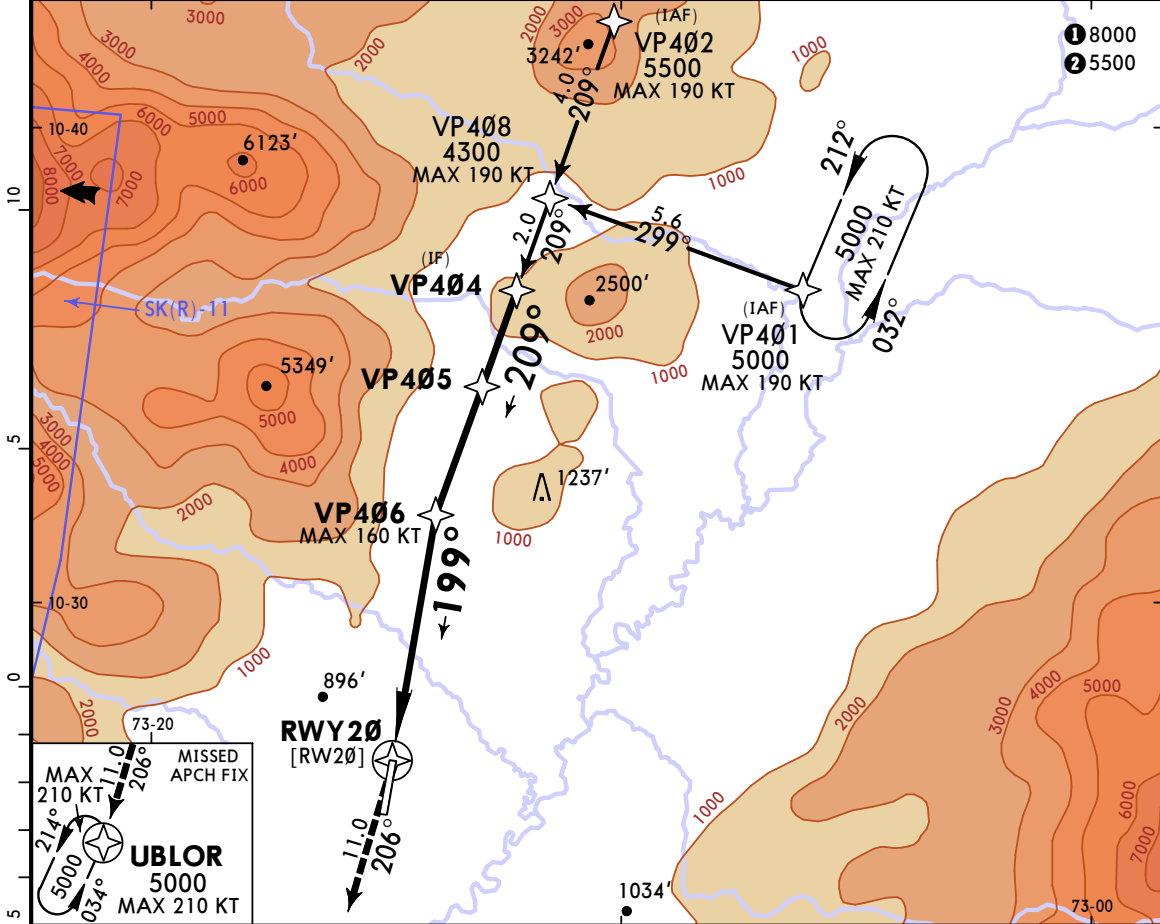
(12-2) CAT A, B & C

RNP Rwy 20

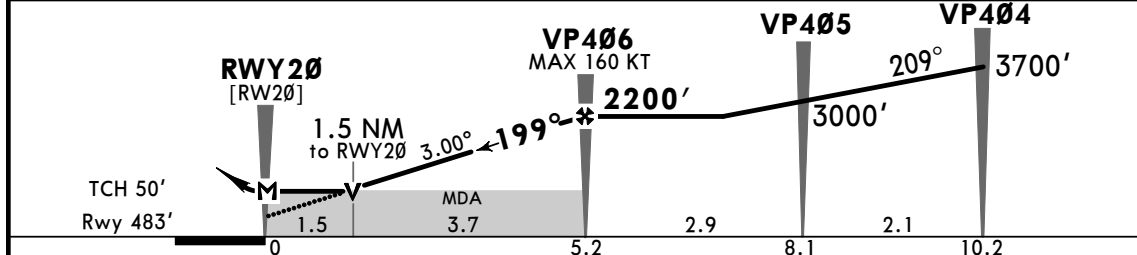
MISSED APCH CLIMB GRADIENT MIM 5.0%

*LOPEZ Tower 118.0

BRIEFING STRIP™	RNAV	Final Apch Crs 199°	VP406 2200' (1717')	LNAV/VNAV DA(H) 1020' (537')	Apt Elev 485' Rwy 483'	<p>MSA ARP ① 8000 ② 5500</p>	
	MISSED APCH: Turn RIGHT to UBLOR climbing to 5000', climb on UBLOR holding. Missed Apch climb gradient mim 5.0%.						
	RNP Apch [Alt Set: IN (hPa on req)] Trans level: FL 190 Trans alt: 18000'						
	1. Visual segment surface penetrated by 535' tree north of airport. 2. For uncompensated systems Baro-VNAV, LNAV/VNAV not authorized below 5°C or above 41°C. 3. Holding at VP401 designed and validated per FAA criteria.						



DIST to THR	1.5	2.0	3.0	4.0	5.0
ALTITUDE	1020'	1170'	1488'	1807'	2125'



Gnd speed-Kts	70	90	100	120	140	160	PAPI 5000' to UBLOR RT	
Descent Angle	3.00°	372	478	531	637	743		849
MAP at RWY20								

STRAIGHT-IN LANDING RWY20	
LNAV/VNAV DA(H) 1020' (537')	LNAV MDA(H) 1020' (537')

PANS OPS	A	1500m	2600m
	B		
	C	2400m	2800m
	D	NOT APPLICABLE	NOT APPLICABLE

CHANGES: Speeds, notes.

© JEPPESEN, 2021. ALL RIGHTS RESERVED.

SKVP/VUP

11 JUN 21
Eff 17 Jun (13-1)

CAT A, B & C

VALLEDUPAR, COLOMBIA
VOR Rwy 02

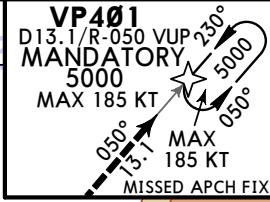
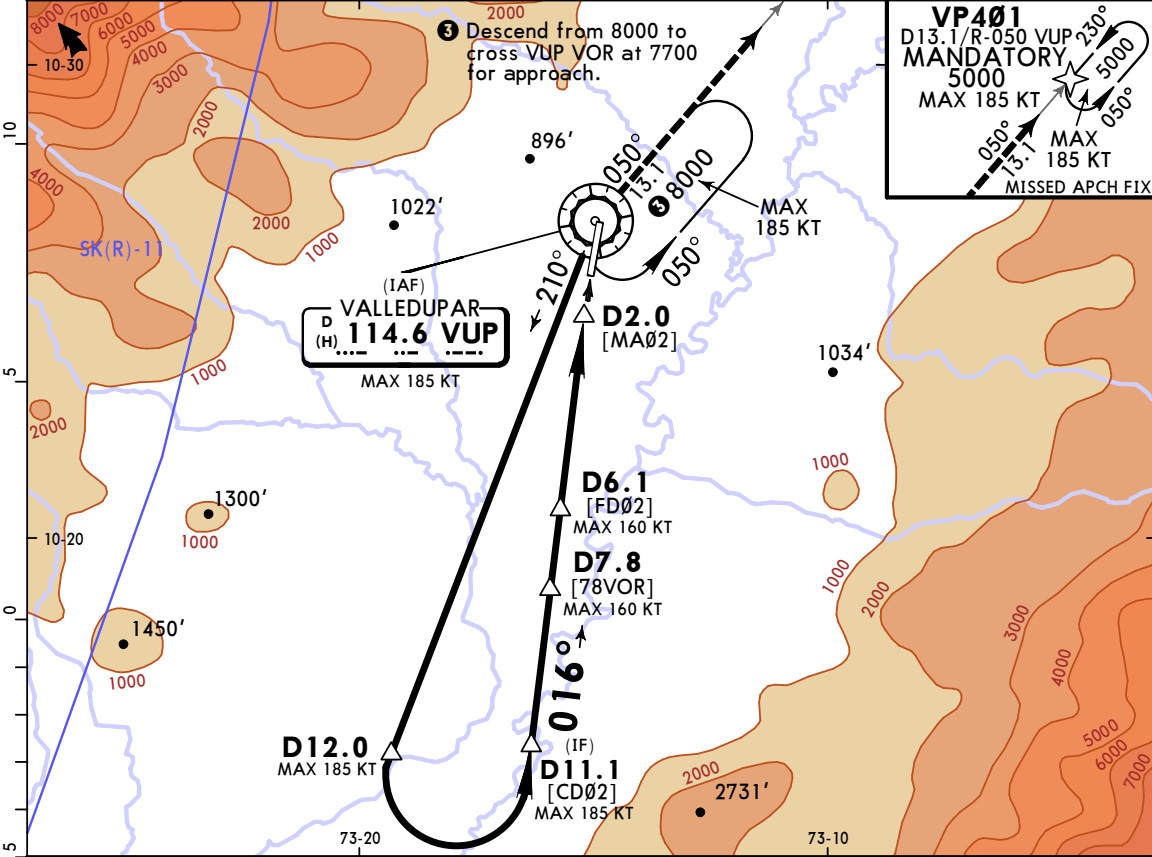
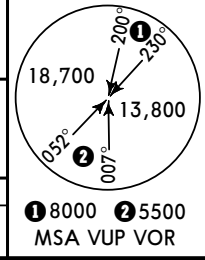
ALFONSO LOPEZ PUMAREJO

MISSED APCH CLIMB GRADIENT MIM 4.8%

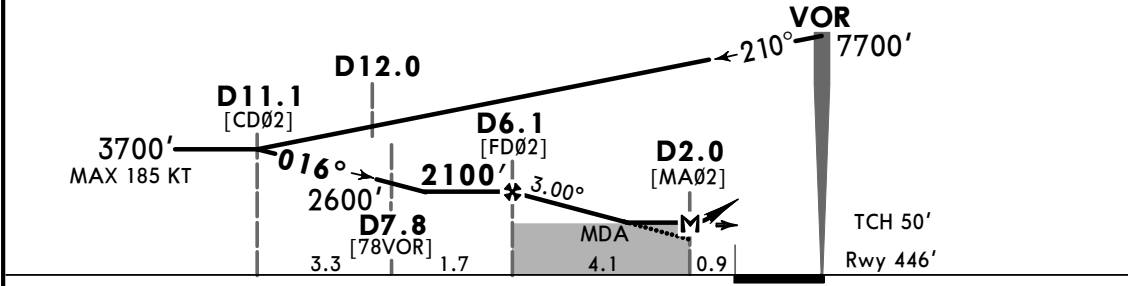
*LOPEZ Tower 118.0

BRIEFING STRIP

VOR VUP 114.6	Final Apch Crs 016°	D6.1 2100' (1654')	MDA(H) 770' (324')	Apt Elev 485' Rwy 446'
MISSED APCH: Proceed to intercept VUP VOR R-050 outbound climbing at 5000' to VP401 holding pattern.				
Missed Apch climb gradient mim 4.8%. MAX 185 KT.				
Alt Set: IN (hPa on req)		Trans level: FL 190		Trans alt: 18000'
1. VUP VOR/DME required. 2. Holding at VUP VOR and VP401 simultaneously at the same altitude is prohibited.				



VUP DME	6.0	5.0	4.0	3.0	2.0
ALTITUDE	2040'	1720'	1410'	1090'	770'



Gnd speed-Kts	70	90	100	120	140	160
Descent Angle 3.00°	372	478	531	637	743	849
MAP at D2.0						
FAF to MAP	4.1	3:31	2:44	2:28	2:03	1:45

PAPI	5000'	VUP	114.6	VP401
	RT	R-050		

PANS OPS

STRAIGHT-IN LANDING RWY02		CIRCLE-TO-LAND	
MDA(H) 770' (324')		1 Not authorized West of Airport	
A	1700m	Max Kts	MDA(H)
B		100	1020' (535') -2400m
C	1900m	135	1070' (585') -3000m
D	NOT APPLICABLE	180	1170' (685') -4000m
		D	NOT APPLICABLE

CHANGES: None.

© JEPPESEN, 2002, 2021. ALL RIGHTS RESERVED.