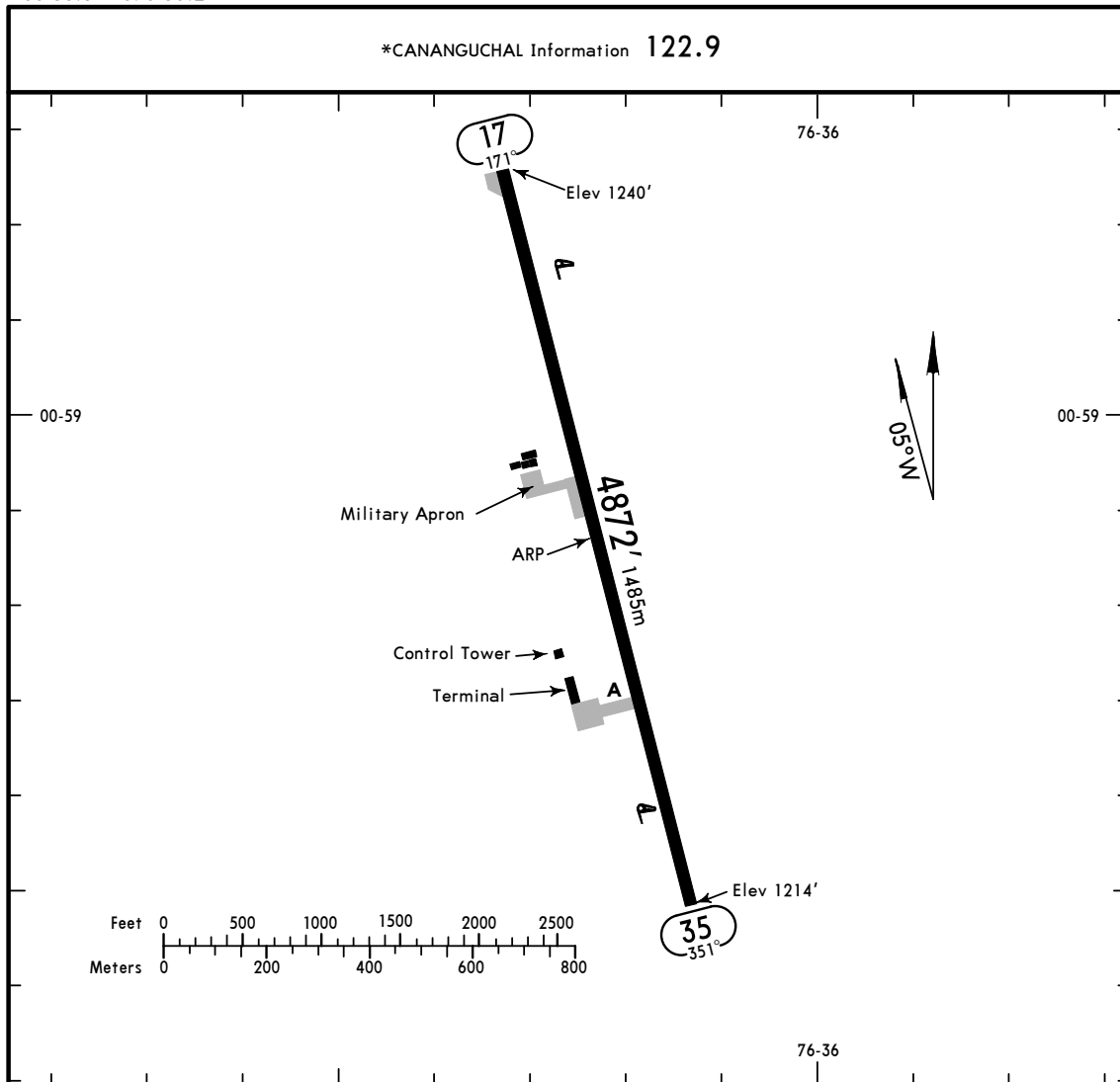


*CANANGUCHAL Information 122.9



ADDITIONAL RUNWAY INFORMATION

RWY	PAPI-L	USABLE LENGTHS			WIDTH
		Threshold	Landing Beyond Glide Slope	TAKE-OFF	
17					46' 14m
35	PAPI-L				

TAKE-OFF

All Rwys

Standard

1 & 2 Eng

3 & 4 Eng

1600m

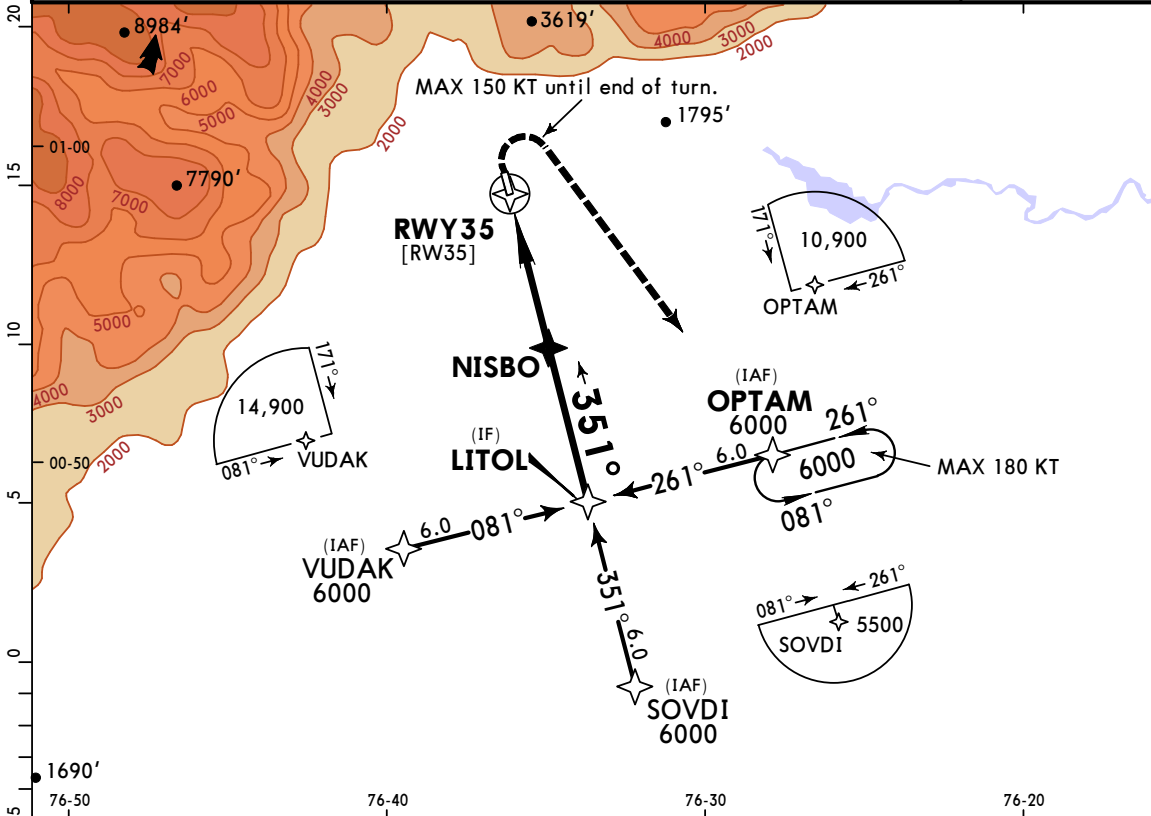
800m

*CANANGUCHAL Information 122.9

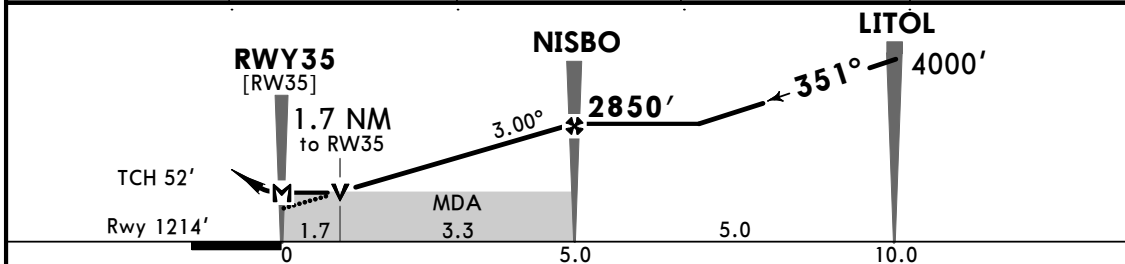
BRIEFING STRIP™

RNAV	Final Apch Crs 351°	NISBO 2850' (1636')	LNAV MDA(H) 1900' (686')	Apt Elev 1240' Rwy 1214'
MISSED APCH: RIGHT turn to OPTAM holding pattern and 6000'. Missed approach requires a minimum climb of 4.0%. MAX 150 KT until end of turn.				
Alt Set: IN (hPa on req)		Trans level: FL 190		Trans alt: 18000'
RNP Apch				
Refer to Tres De Mayo Tower at Puerto Asis SKAS for altimeter setting.				

TAA
25 NM
IAF



DIST to THR	2.0	3.0	4.0	5.0
ALTITUDE	1852'	2168'	2484'	2850'



Gnd speed-Kts	70	90	100	120	140	160	
Descent Angle 3.00°	372	478	531	637	743	849	
MAP at RW35	5.0	4:17	3:20	3:00	2:30	2:09	1:53

PAPI-L **OPTAM**

STRAIGHT-IN LANDING RWY 35

LNAV MDA(H) 1900' (686')	
A	3000m
B	3000m
C	NOT APPLICABLE
D	NOT APPLICABLE

CIRCLE-TO-LAND

Max Kts	MDA(H)
100	1960' (720') -3300m
135	2020' (780') -3600m
C	NOT APPLICABLE
D	NOT APPLICABLE

PANS OPS