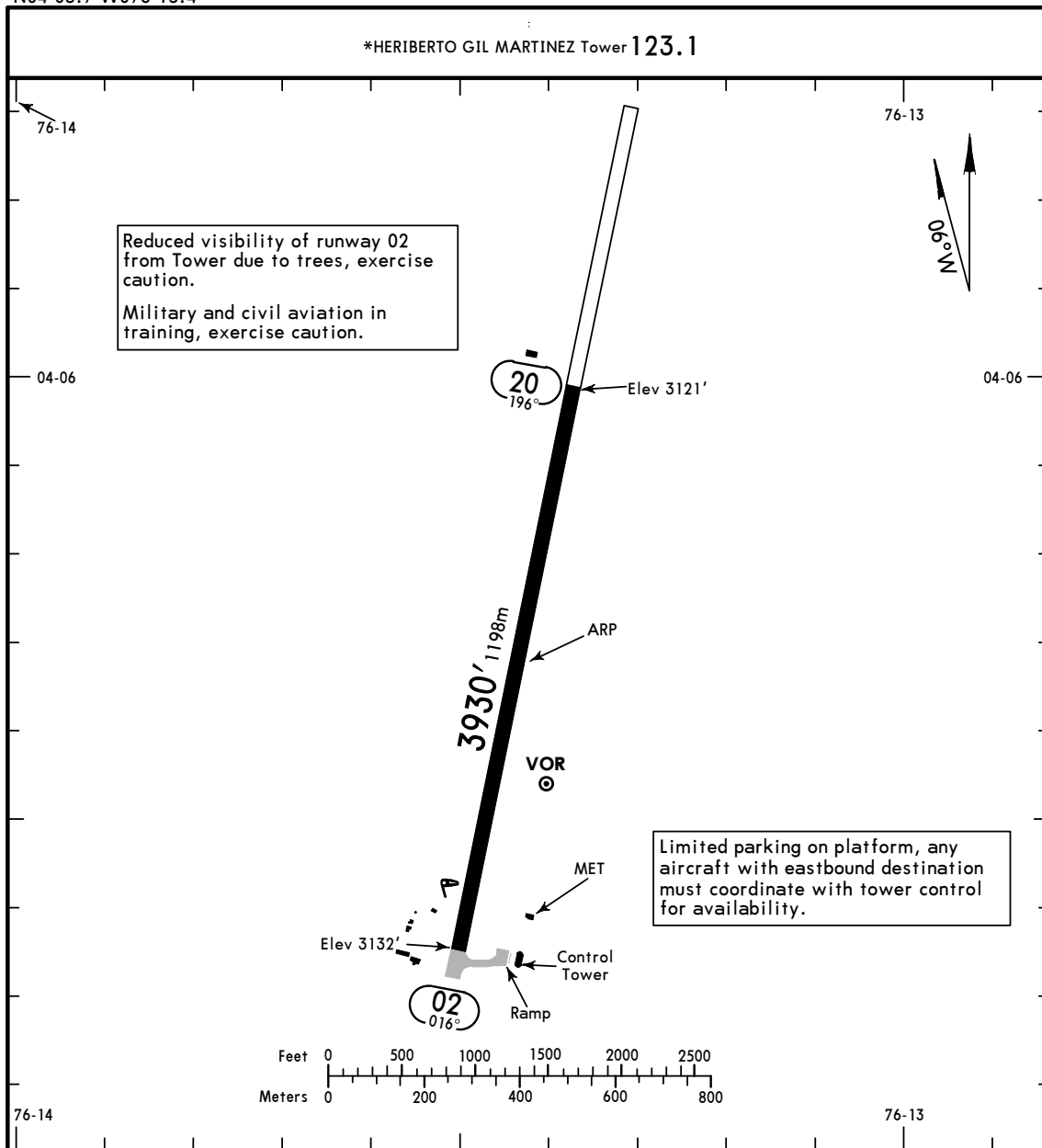


\*HERIBERTO GIL MARTINEZ Tower 123.1



ADDITIONAL RUNWAY INFORMATION

RWY	USABLE LENGTHS		TAKE-OFF	WIDTH
	LANDING BEYOND Threshold	Glide Slope		
02 20				98' 30m

TAKE-OFF

All Rwy's

Standard

1 & 2 Eng

3 & 4 Eng

1600m

800m

SKUL/ULQ

HERIBERTO GIL MARTINEZ

24 JAN 20

13-1

Eff 30 Jan

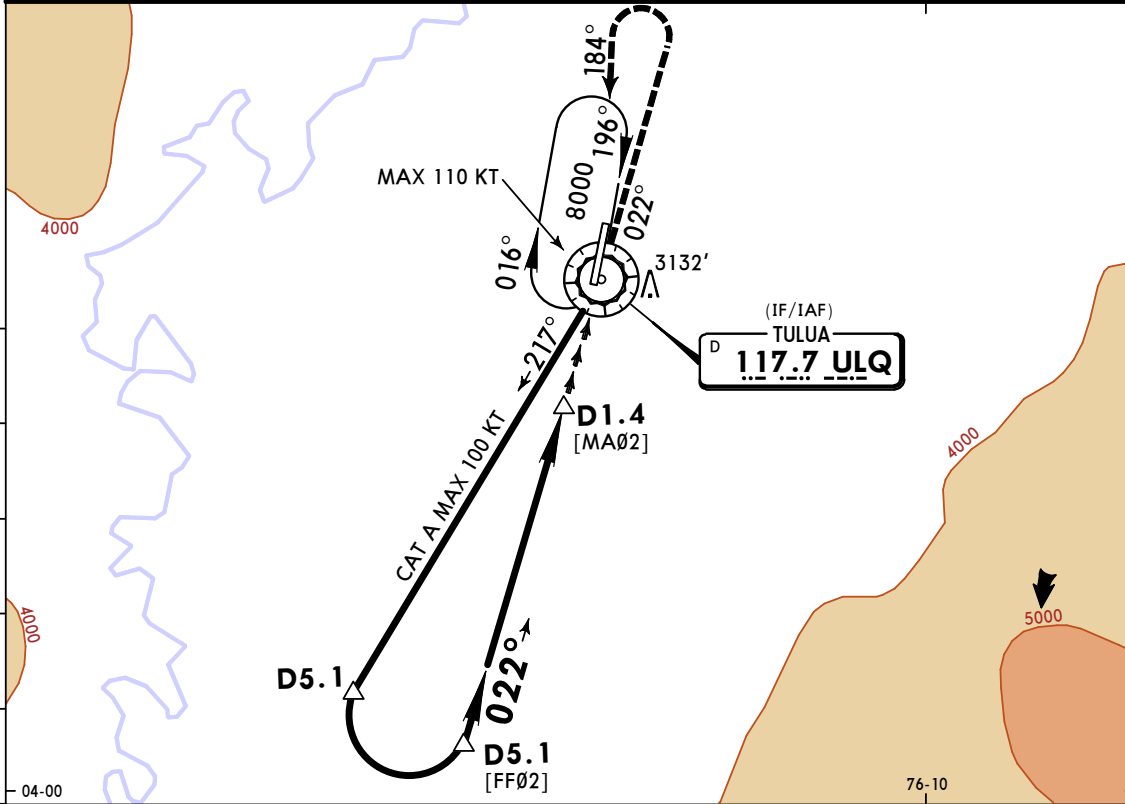
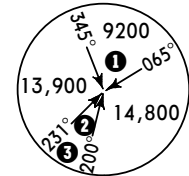
CAT A

JEPPESEN MISSED APCH CLIMB GRADIENT MIM 4.0%

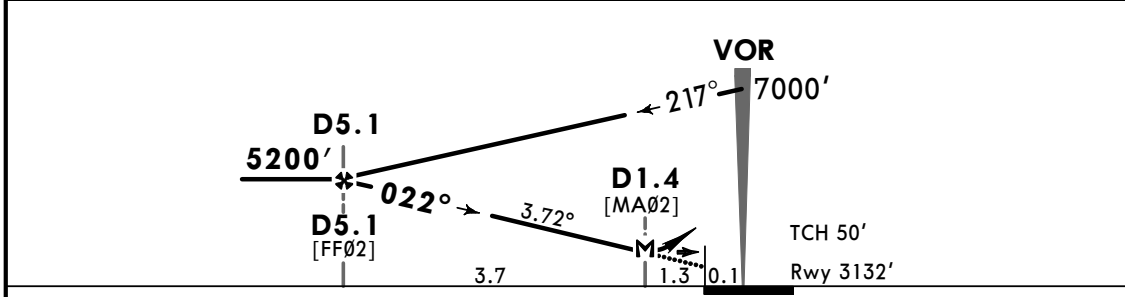
TULUA, COLOMBIA  
VOR Rwy 02

BRIEFING STRIP

CALI Approach <b>119.1</b>			*HERIBERTO GIL MARTINEZ Tower <b>123.1</b>		
VOR ULQ <b>117.7</b>	Final Apch Crs <b>022°</b>	D5.1 <b>5200'</b> (2068')	MDA(H) <b>3730'</b> (598')	Apt Elev 3132'	Rwy 3132'
<p><b>MISSED APCH:</b> Continue approach heading climbing to 4900', turn LEFT climbing to 8000' to ULQ VOR and hold.</p>					
Alt Set: IN (hPa on req)			Trans level: FL 190	Trans alt: 18000'	
VOR DME required.					<p>MSA ULQ VOR</p> <p>① 8500 Within 14 DME ② 8100 Within 10 DME ③ 9100</p>



ULQ DME	5.0	4.0	3.0	2.0
ALTITUDE	5073'	4687'	4283'	3888'



Gnd speed-Kts	70	90	100	120	140	160	4900'	8000'	ULQ
Descent Angle 3.72°	461	593	658	790	922	1053			
MAP at D1.4 or FAF to MAP	3.7	3:10	2:28	2:13	1:51	1:35	1:23	↑	←

STRAIGHT-IN LANDING RWY 02 MISSED APCH CLIMB GRADIENT MIM 4.0%			CIRCLE-TO-LAND MISSED APCH CLIMB GRADIENT MIM 4.0%		
MDA(H) <b>3730'</b> (598')			MDA(H) _____		
A	2600m		Max Kts	100	
B	NOT APPLICABLE		B	NOT APPLICABLE	
C	NOT APPLICABLE		C	NOT APPLICABLE	
D	NOT APPLICABLE		D	NOT APPLICABLE	

PANS OPS

CHANGES: Communications.

© JEPPESEN, 2019, 2020. ALL RIGHTS RESERVED.