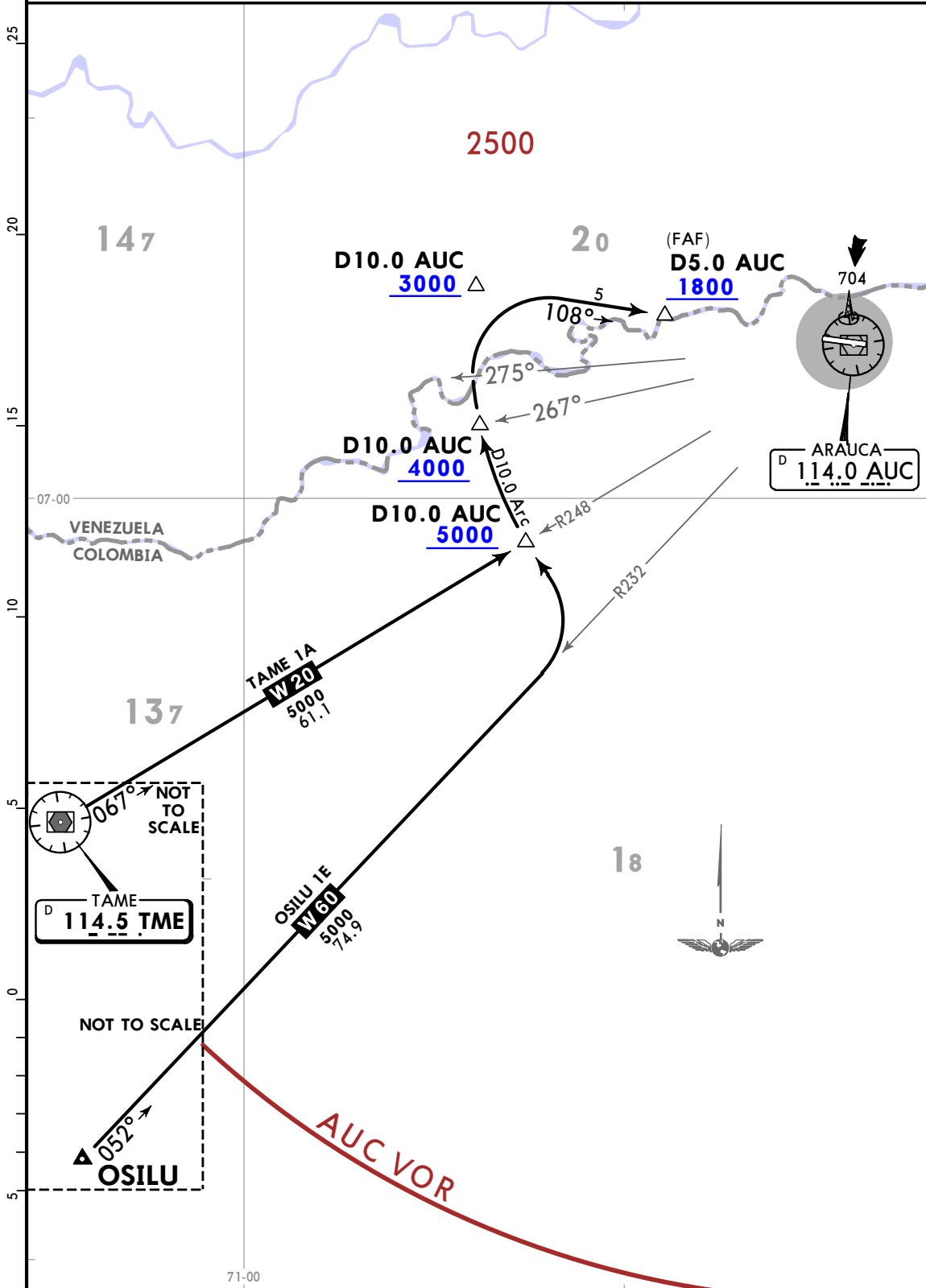


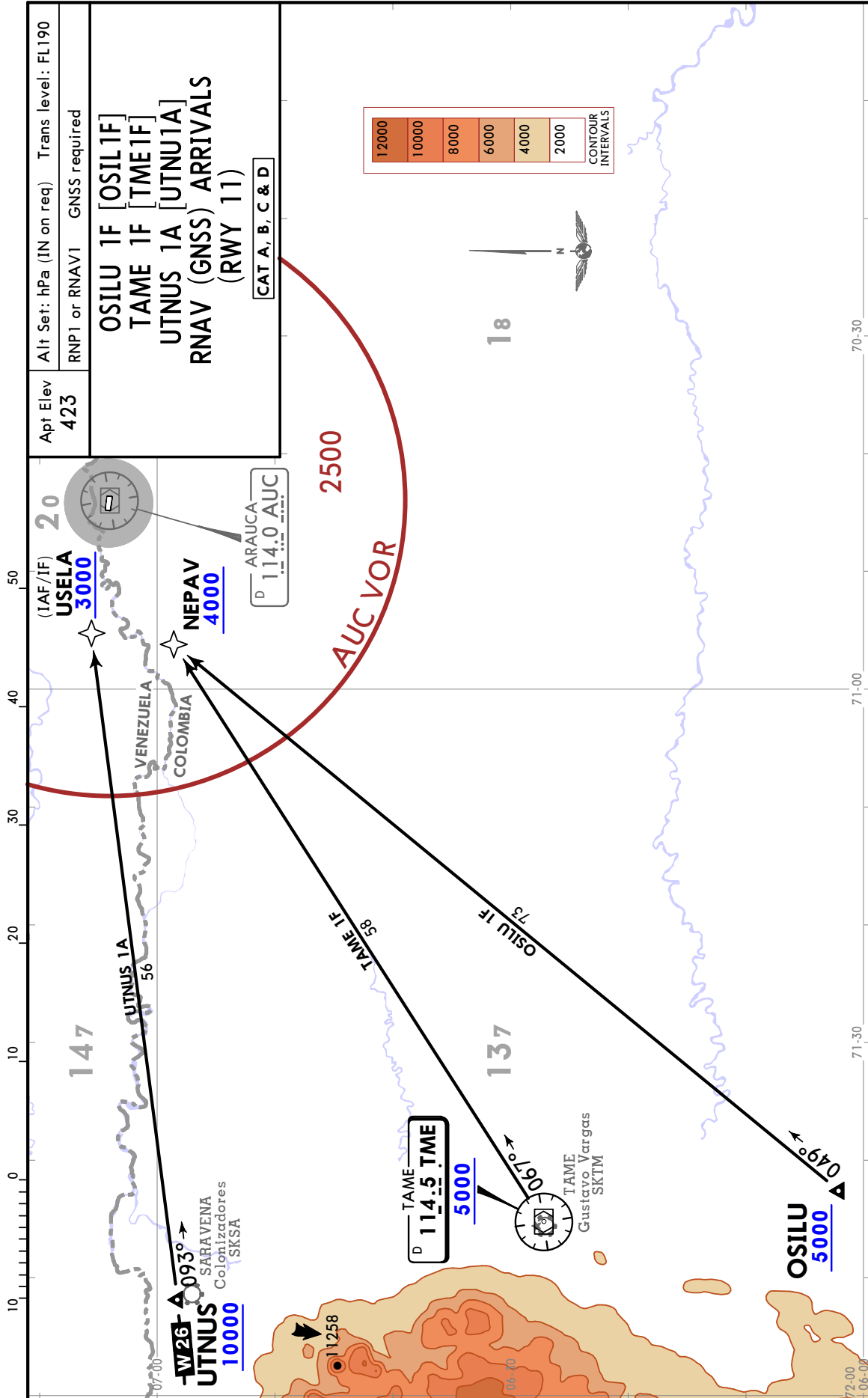
Apt Elev
423

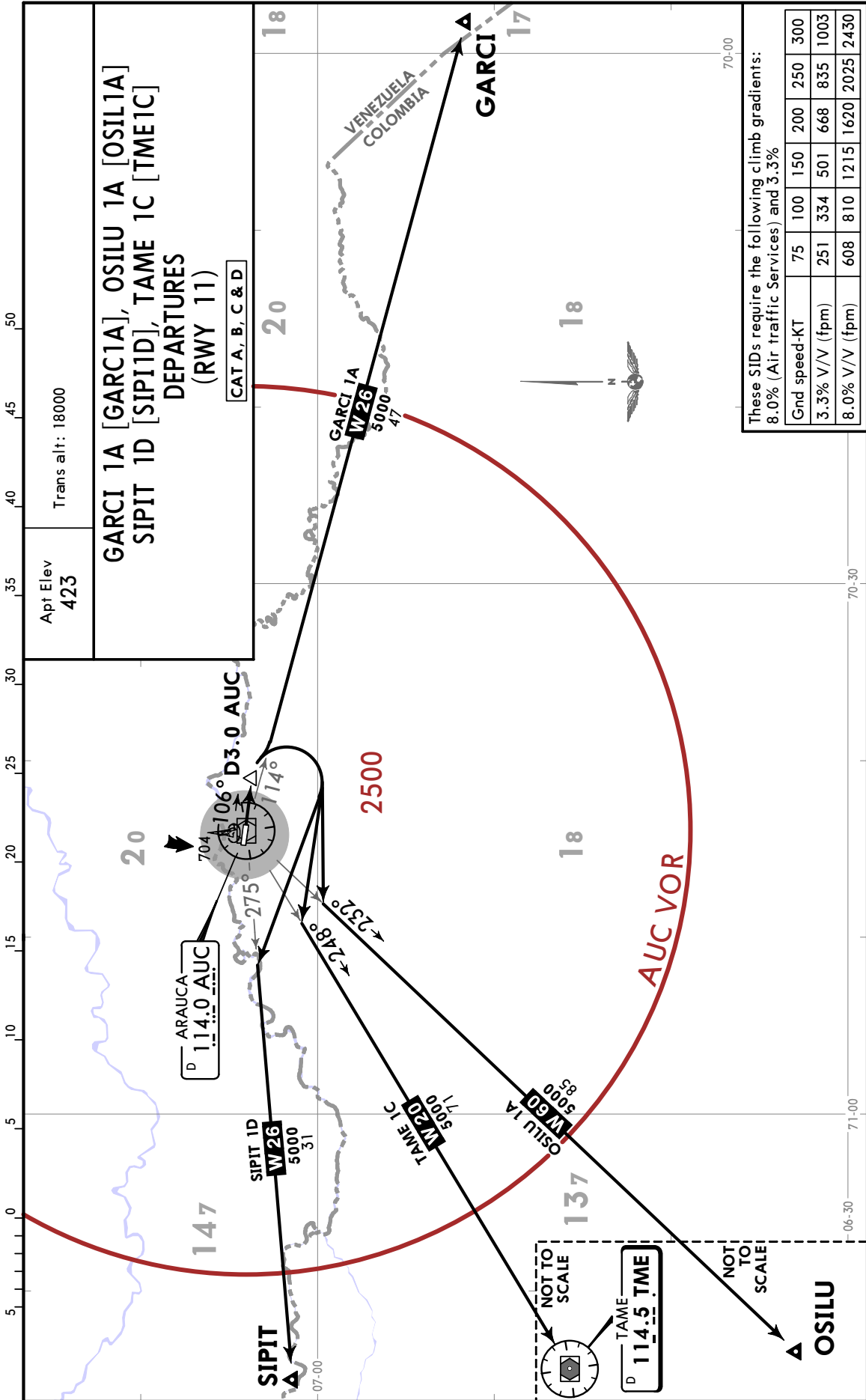
Alt Set: hPa (IN on req) Trans level: FL190
This arrival will not be used when traffic is holding at AUC VOR.

OSILU 1E [OSIL1E], TAME 1A [TME1A]
ARRIVALS
(RWY 11)

CAT A, B, C & D

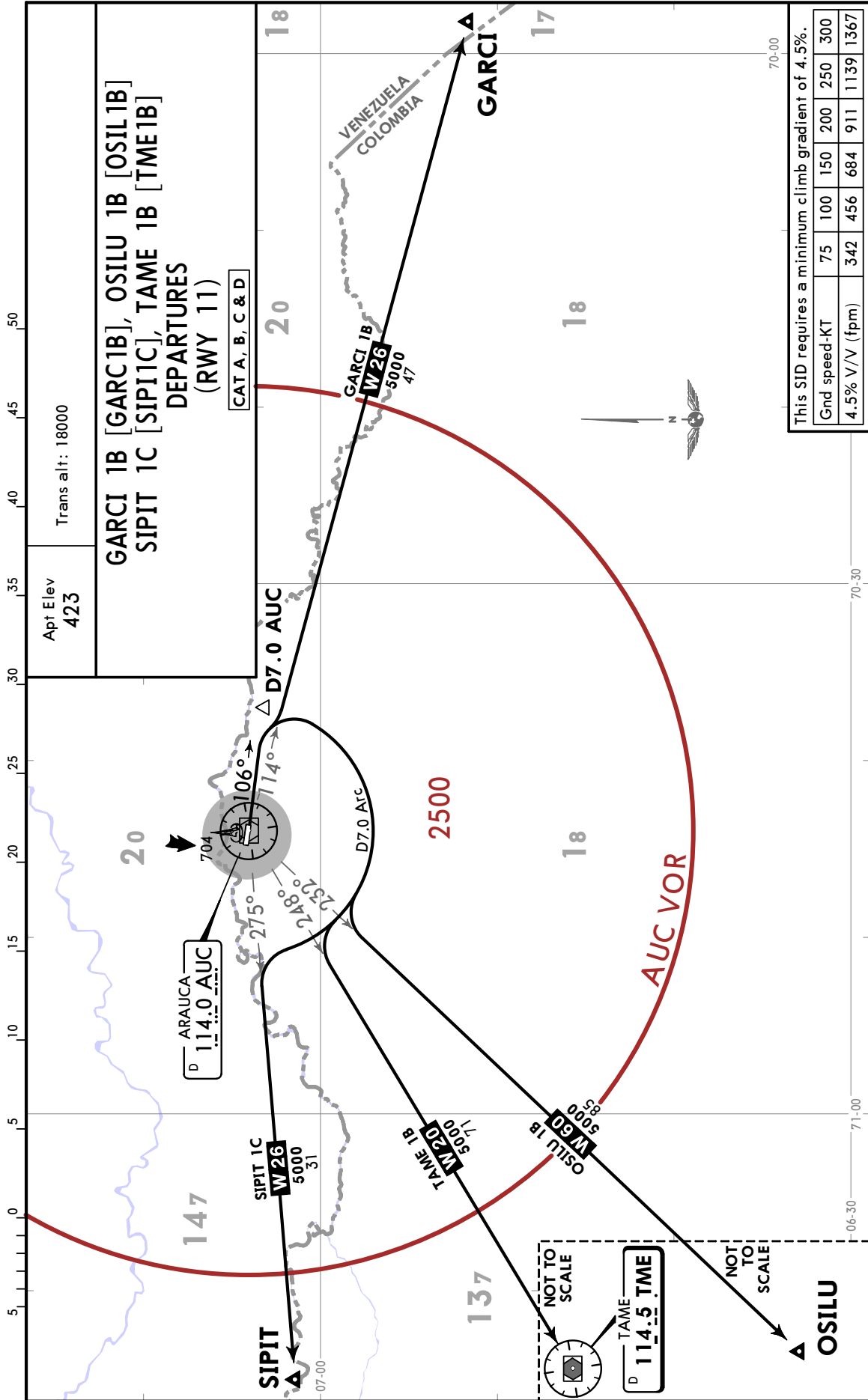


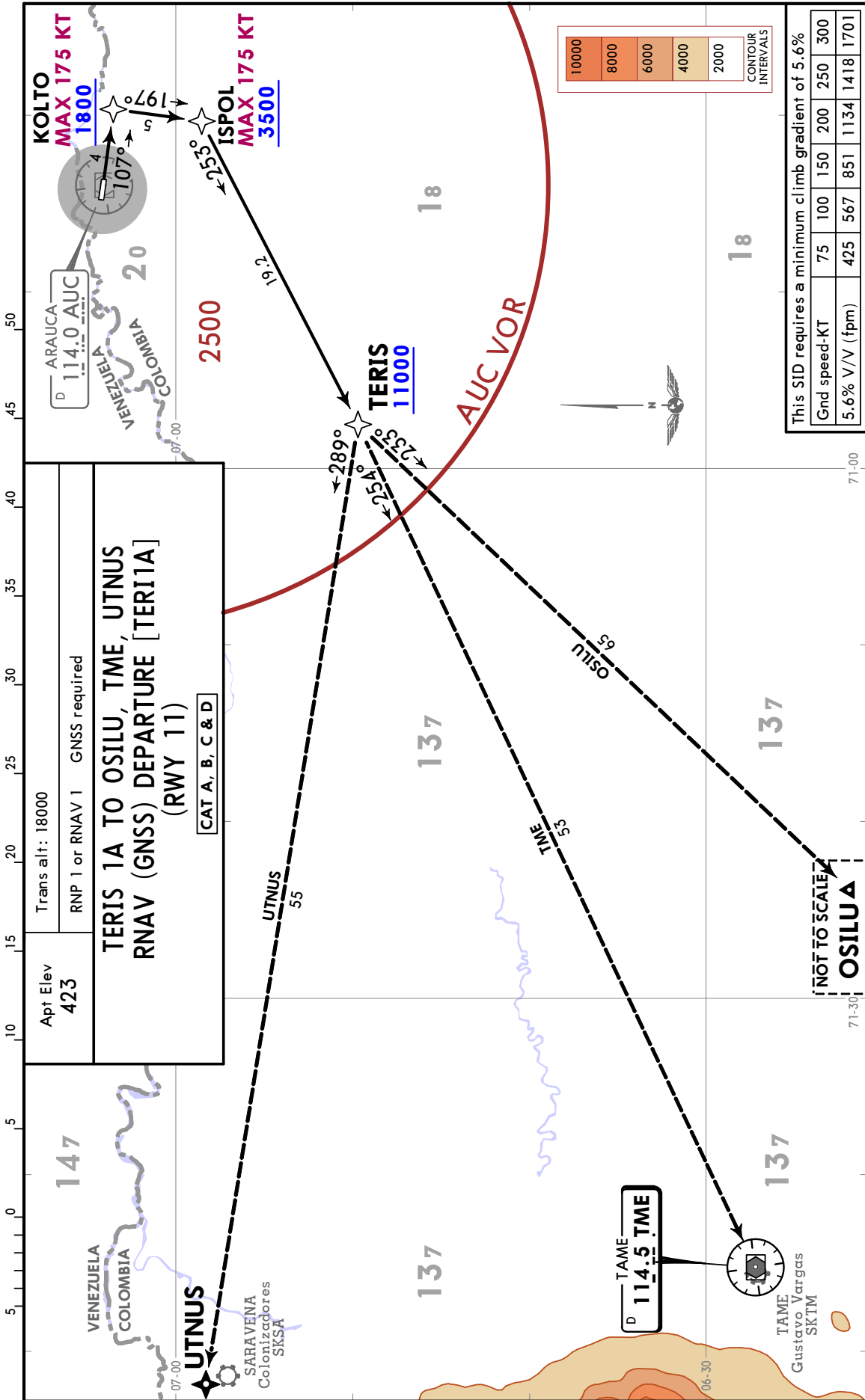




CHANGES: New format.

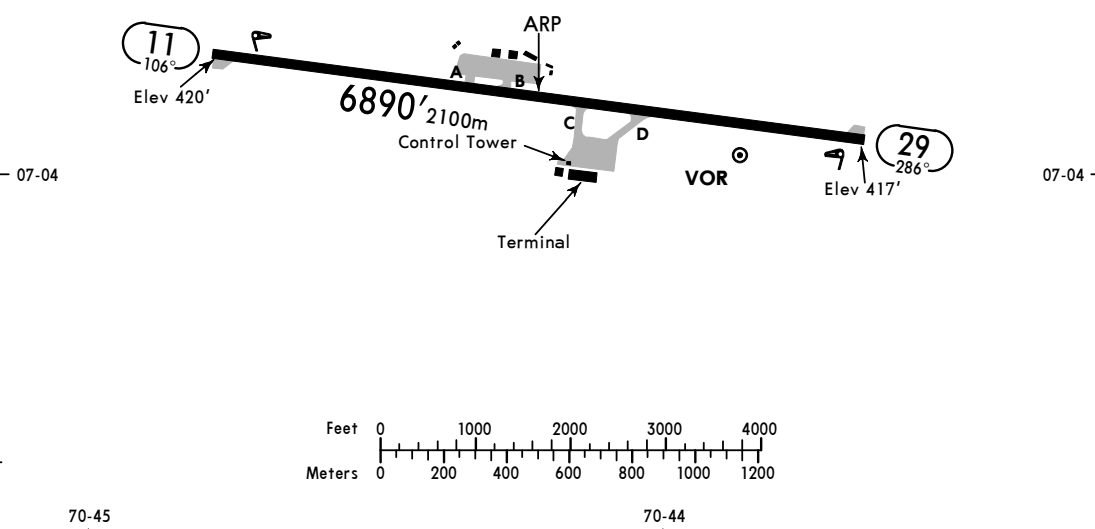
© JEPPESEN, 2021. ALL RIGHTS RESERVED.





*SANTIAGO PEREZ Tower 118.1

CAUTION: Birds in vicinity of airport.
 CAUTION: Tower visibility reduced to 1969' (600m) Rwy 11 due to presence of trees.



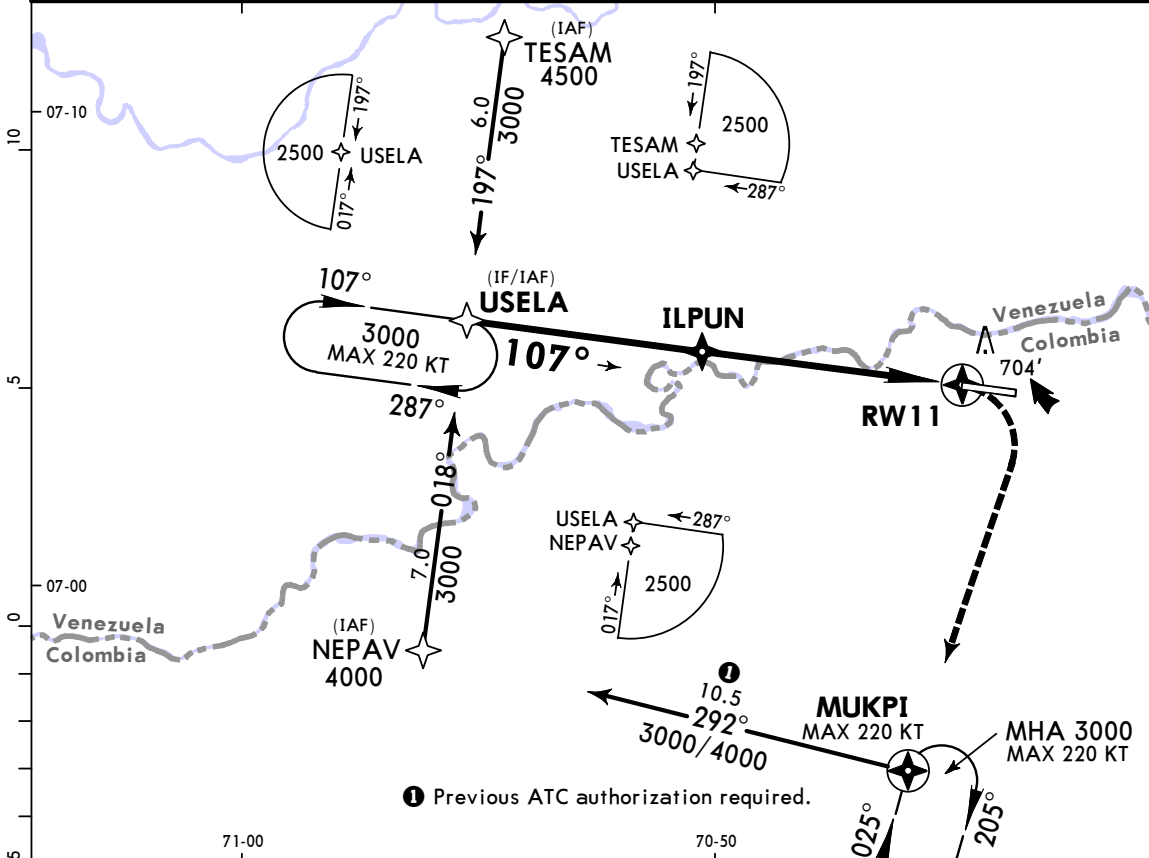
ADDITIONAL RUNWAY INFORMATION

RWY				USABLE LENGTHS		TAKE-OFF	WIDTH
	RL	REIL	PAPI-L (angle 3.0°)	Threshold	Glide Slope		
11	RL	REIL	PAPI-L (angle 3.0°)				98' 30m
29	RL						

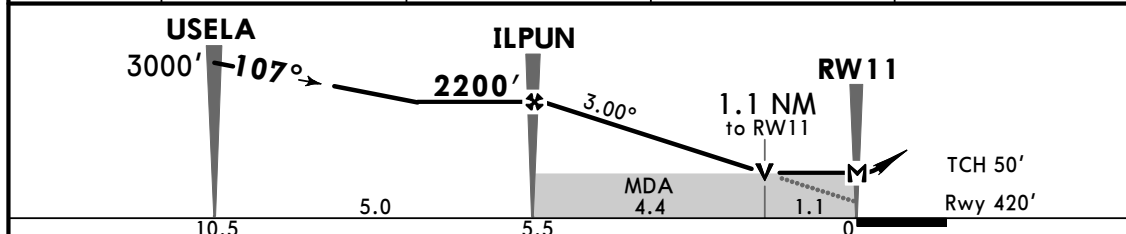
TAKE-OFF

	All Rwys
A	400'-2.0 km
B	400'-3.0 km
C	400'-3.0 km
D	NOT APPLICABLE

*CUCUTA Approach			*SANTIAGO PEREZ Tower		
119.6			118.1		
RNAV	Final Apch Crs 107°	ILPUN 2200' (1780')	LNAV MDA(H) 830' (410')	Apt Elev 423' Rwy 420'	TAA 25 NM USELA, NEPAV, TESAM
MISSED APCH: Turn RIGHT to MUKPI holding pattern climbing to 3000'.					
RNP Apch	Alt Set: IN (hPa on req)	Trans level: FL 190	Trans alt: 18000'		



NM to THR	5.0	4.0	3.0	2.0
ALTITUDE	2061'	1743'	1425'	1107'

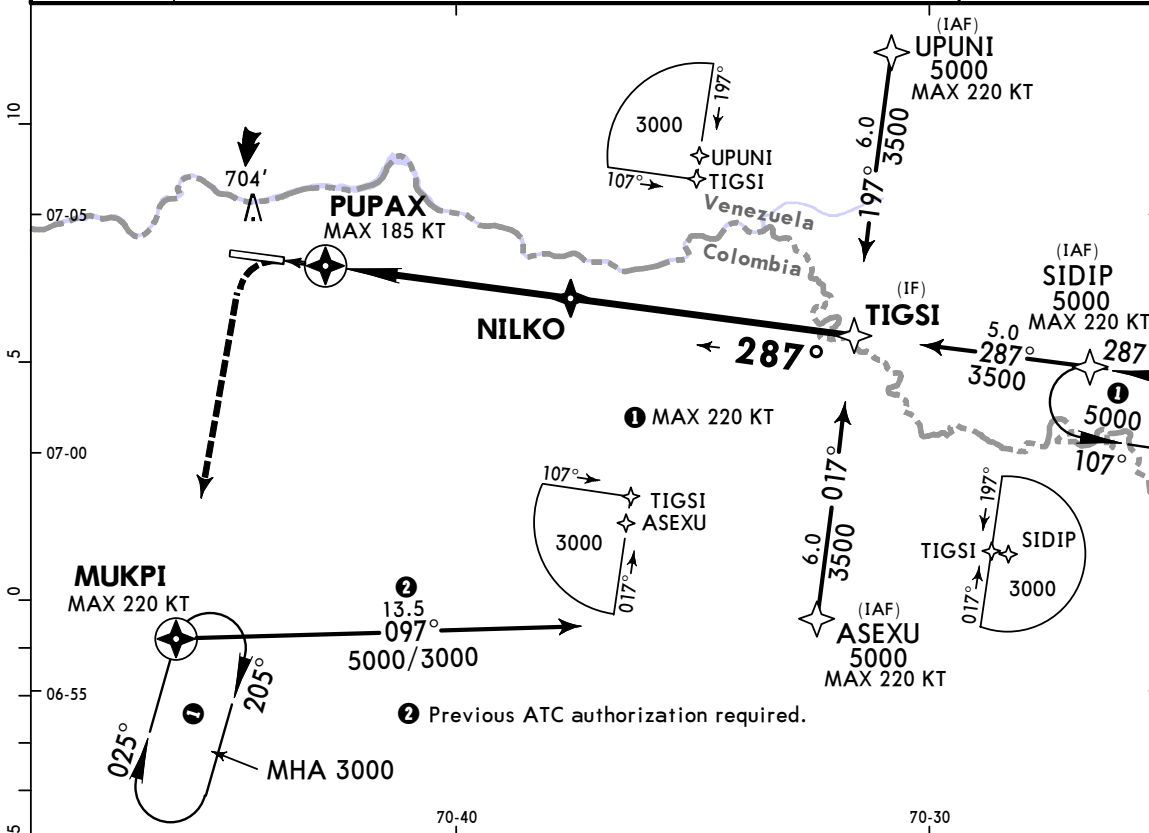


Gnd speed-Kts	70	90	100	120	140	160	REIL PAPI-L	3000'	MUKPI
Descent Angle	3.00°	372	478	531	637	743			
MAP at RW11 or ILPUN to MAP	5.5	4:43	3:40	3:18	2:45	2:21	2:04	RT	

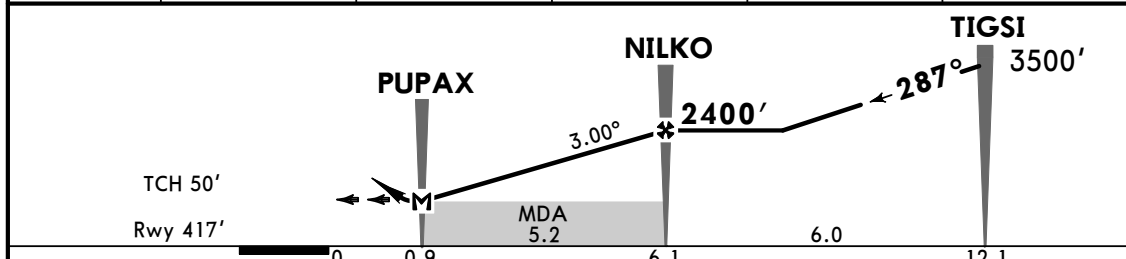
STRAIGHT-IN LANDING RWY 11				CIRCLE-TO-LAND			
LNAV MDA(H) 830' (410')				Max Kts			
A	2100m			100	1000' (577') -2800m		
B	2300m			135	1000' (577') -3300m		
C				180	1120' (697') -4400m		
D				205	1120' (697') -4700m		

PANS OPS

*CUCUTA Approach			*SANTIAGO PEREZ Tower		
119.6			118.1		
RNAV	Final Apch Crs 287°	NILKO 2400' (1983')	LNAV MDA(H) 750' (333')	Apt Elev 423'	TAA 25 NM SIDIP, UPUNI, ASEXU
MISSED APCH: Turn LEFT to MUKPI holding pattern climbing to 3000'. MAX 185 KT.					
RNP Apch	Alt Set: IN (hPa on req)	Trans level: FL 190	Trans alt: 18000'		



NM to THR	2.0	3.0	4.0	5.0	6.0
ALTITUDE	1103'	1421'	1740'	2058'	2376'

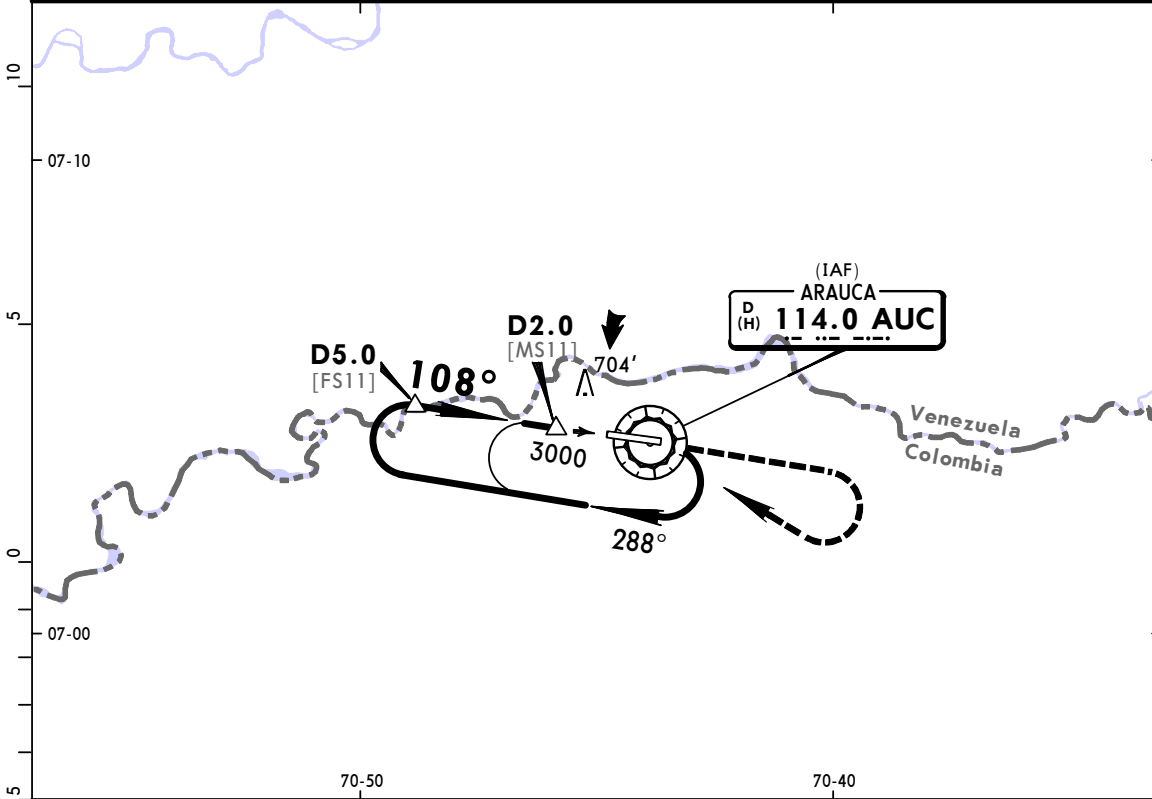


Gnd speed-Kts	70	90	100	120	140	160	3000' MUKPI LT	
Descent Angle	3.00°	372	478	531	637	743		849
MAP at PUPAX or NILKO to MAP	5.2	4:27	3:28	3:07	2:36	2:14		1:57

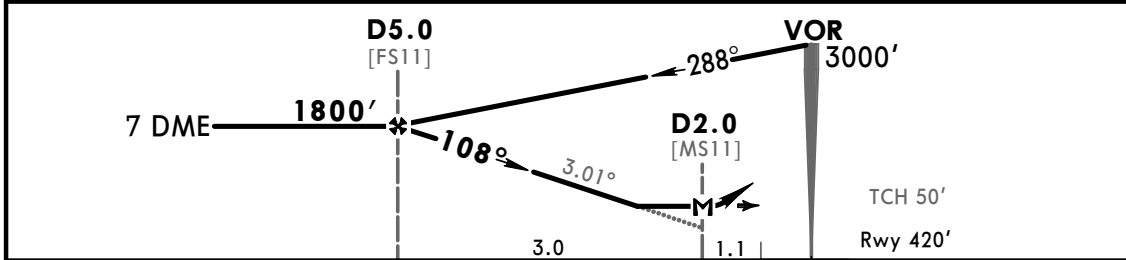
STRAIGHT-IN LANDING RWY 29			CIRCLE-TO-LAND		
LNAV MDA(H) 750' (333')			Max Kts		
A	1700m	100	1000' (577') -2800m		
B	1900m	135	1000' (577') -3300m		
C	1900m	180	1120' (697') -4400m		
D	1900m	205	1120' (697') -4700m		

PANS OPS

*CUCUTA Approach 119.6			*SANTIAGO PEREZ Tower 118.1		
VOR AUC 114.0	Final Apch Crs 108°	Minimum Alt D5.0 1800' (1380')	MDA(H) 830' (410')	Apt Elev 423' Rwy 420'	2500' MSA AUC VOR
MISSED APCH: Climb on track until crossing AUC VOR at or above 1200', then turn RIGHT to AUC VOR and hold at 3000'.					
Alt Set: IN (hPa on req)		Trans level: FL 190		Trans alt: 18000'	



	70-50		70-40	
AUC DME	5.0	4.0	3.0	2.0
ALTITUDE	1800'	1482'	1163'	844'



Gnd speed-Kts	70	90	100	120	140	160	REIL PAPI-L	1200' ↑ AUC 114.0
Descent Angle	3.01°	373	479	532	639	745		
MAP at D2.0 or FAF to MAP	3.0	2:34	2:00	1:48	1:30	1:17	1:08	

STRAIGHT-IN LANDING RWY11				CIRCLE-TO-LAND				
MDA(H) 830' (410')				Max Kts	MDA(H)			
A	2400m			100	1000' (577') -2800m			
B	2800m			135	1000' (577') -3300m			
C	3200m			180	1120' (697') -4400m			
D				205	1120' (697') -4700m			

PANS OPS