

SKUA

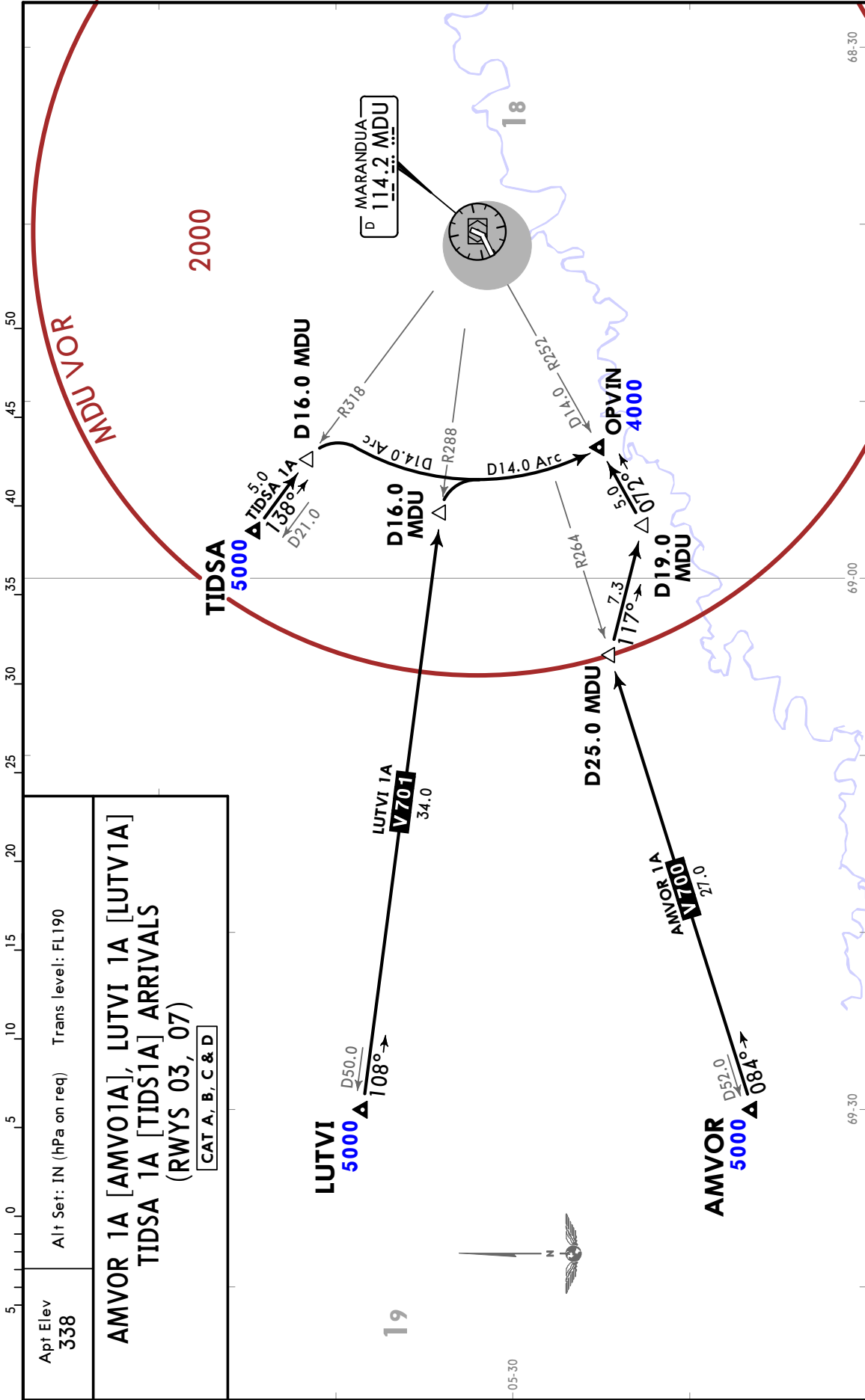
CR. LUIS A. RODRIGUEZ MENESES



10-2 22 JAN 21 Eff 28 Jan

MARANDUA, COLOMBIA

STAR



CHANGES: New procedures at this airport.

© JEPPESEN, 2021. ALL RIGHTS RESERVED.

SKUA
CR. LUIS A. RODRIGUEZ MENESES

22 JAN 21 (10-3) Eff 28 Jan

JEPPESEN
MARANDUA,
COLOMBIA
SID

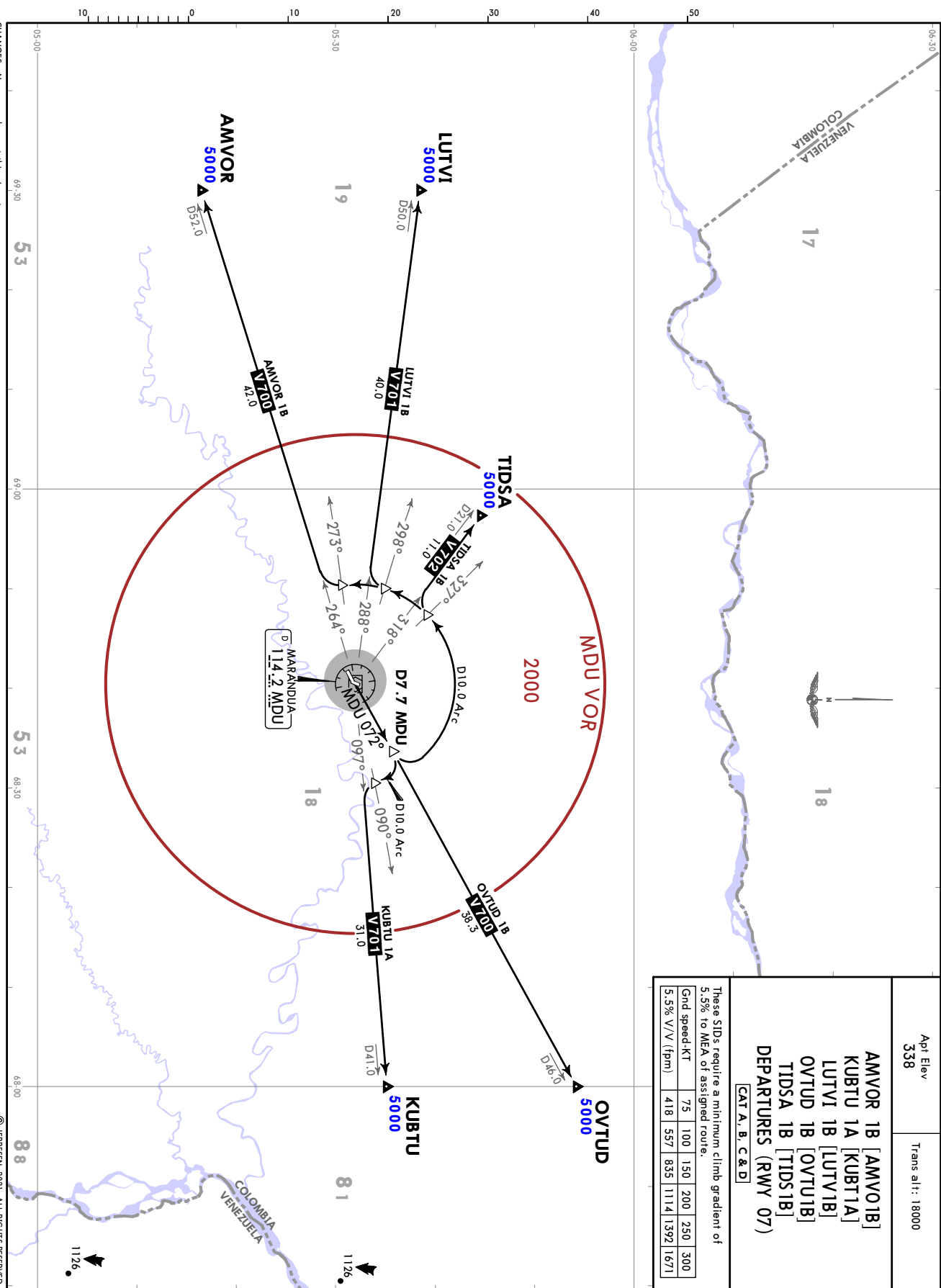
Apt Elev 338 Trans alt: 18000

AMVOR 1B [AMV01B]
KUBTU 1A [KUB11A]
LUTVI 1B [LUTV1B]
OVTUD 1B [OVTU1B]
TIDSA 1B [TIDS1B]
DEPARTURES (RWY 07)

CAT A, B, C & D

These SIDs require a minimum climb gradient of 5.5% to MEA of assigned route.

Gnd speed-KT	75	100	150	200	250	300
5.5% V/V (fpm)	418	557	835	1114	1392	1671



CHANGES: New procedures at this airport.

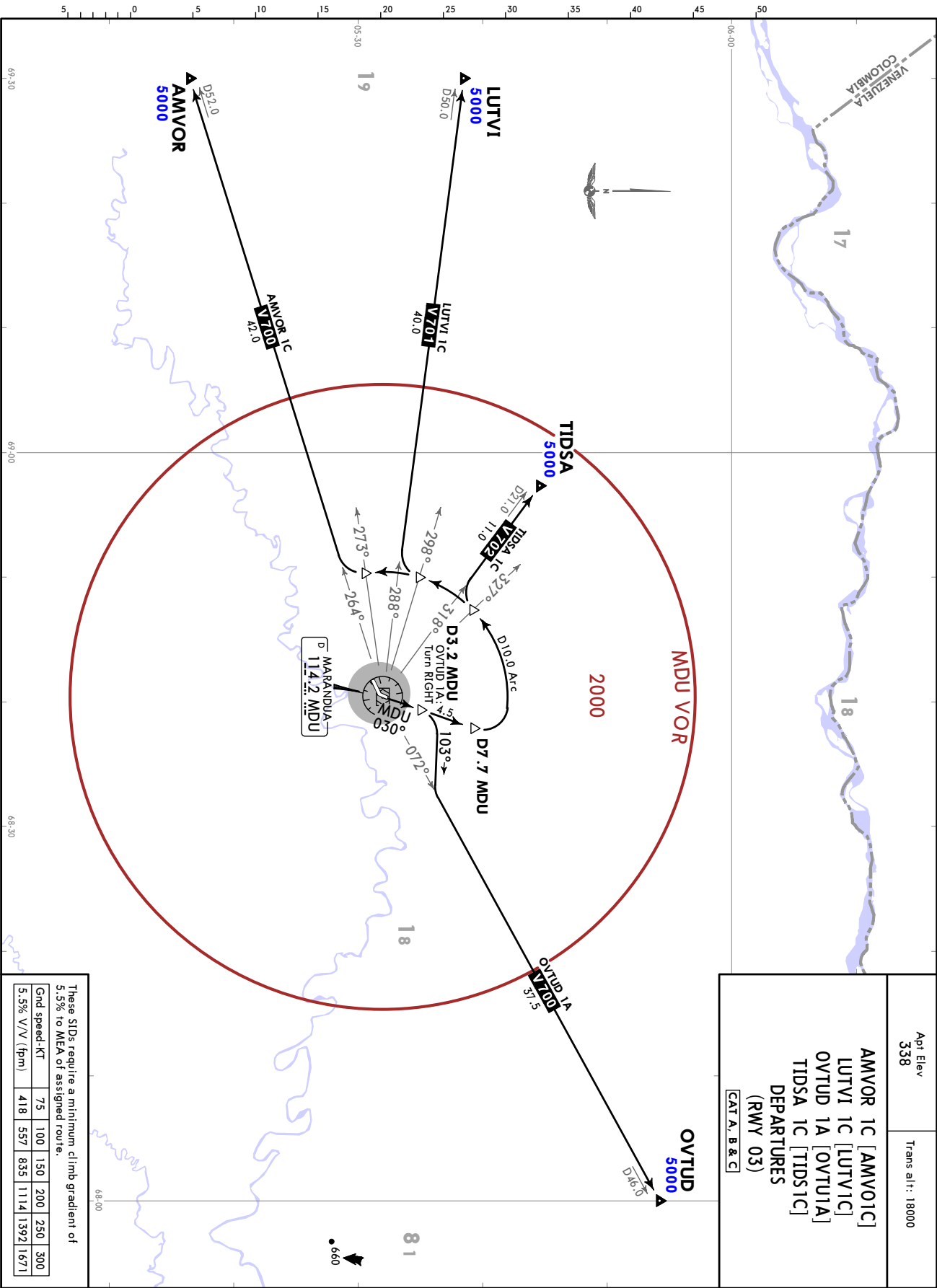
© JEPPESEN, 2021. ALL RIGHTS RESERVED.

SKUA
CR. LUIS A. RODRIGUEZ MENESES

22 JAN 21
10-3A EFF 28 Jan

MARANDUA,
COLOMBIA
SID

Apt Elev 338	Trans alt: 18000
AMVOR 1C [AMV01C] LUTVI 1C [LUTV1C] OVTUD 1A [OVTU1A] TIDSA 1C [TIDS1C] DEPARTURES (RWY 03) CAT A, B & C	



These SIDs require a minimum climb gradient of 5.5% to MDA of assigned route.

Grnd speed-KT	75	100	150	200	250	300
5.5% V/V (fpm)	418	557	835	1114	1392	1671

CHANGES: New procedures at this airport.

© JEPPESEN, 2021. ALL RIGHTS RESERVED.

SKUA

JEPPESEN

MARANDUA, COLOMBIA

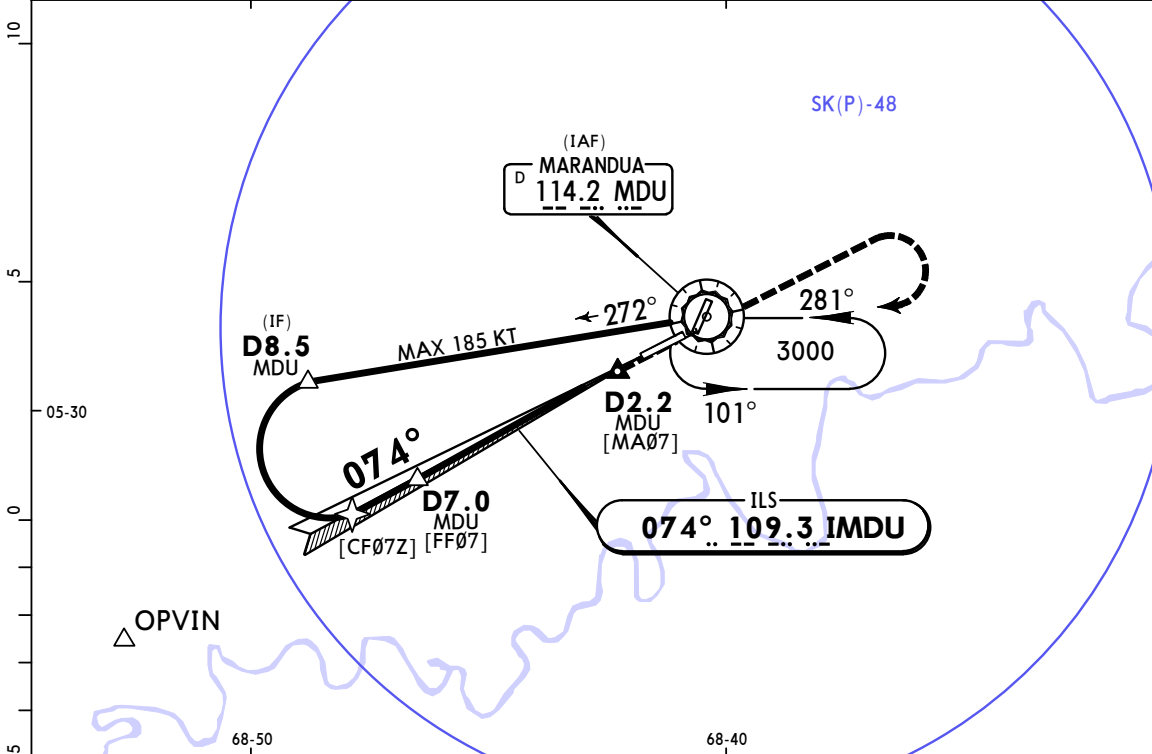
CR. LUIS A. RODRIGUEZ MENESES

(11-1)

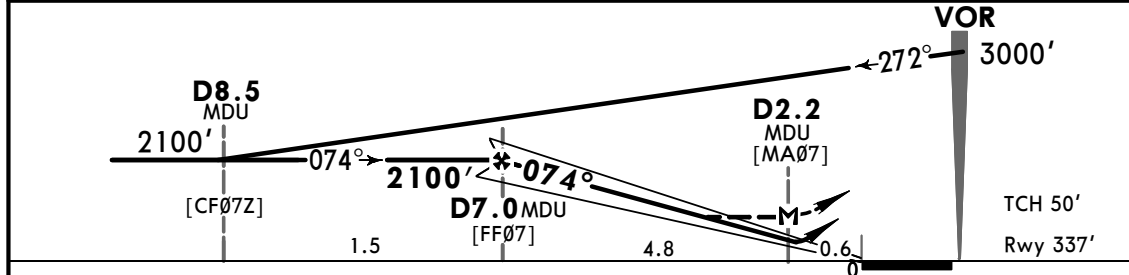
1 OCT 21
Eff 7 Oct

ILS Z or LOC Z Rwy 07

MARANDUA Approach 124.1			RODRIGUEZ MENESES Tower 118.5		
LOC IMDU 109.3	Final Apch Crs 074°	D7.0 2100' (1763')	ILS DA(H) Refer to Minimums	Apt Elev 337' Rwy 337'	2000 MSA MDU VOR
MISSED APCH: Maintain runway heading until 1000', then turn RIGHT toward MDU VOR holding pattern and 3000'.					
Alt Set: IN (hPa on req) Trans levels: FL 190 Trans alt: 18000'					
1. MDU VOR DME required. 2. Do not use OPVIN and holding at MDU VOR at the same level simultaneously.					



MDU DME	7.0	6.0	5.0	4.0	3.0
ALTITUDE	2100'	1782'	1464'	1146'	827'



Gnd speed-Kts	70	90	100	120	140	160	PAPI-L	1000' on hdg ↑	RWY	
GS	3.00°	372	478	531	637	743				849
MAP at D2.2 MDU	4.8	4:07	3:12	2:53	2:24	2:03				1:48
FAF to MAP	4.8	4:07	3:12	2:53	2:24	2:03	1:48			

STRAIGHT-IN LANDING RWY 07		CIRCLE-TO-LAND	
ILS DA(H) A, B: 549' (212') C, D: 569' (232')		LOC (GS out) MDA(H) 740' (403')	
A		Max Kts	MDA(H)
B		100	820' (483') - 1900m
C	1200m	135	830' (493') - 2800m
D		180	930' (593') - 3700m
		205	1030' (693') - 4600m

CHANGES: Apt elev, Tower frequency, prohibited area added.

© JEPPESEN, 2021. ALL RIGHTS RESERVED.

SKUA

JEPPESEN

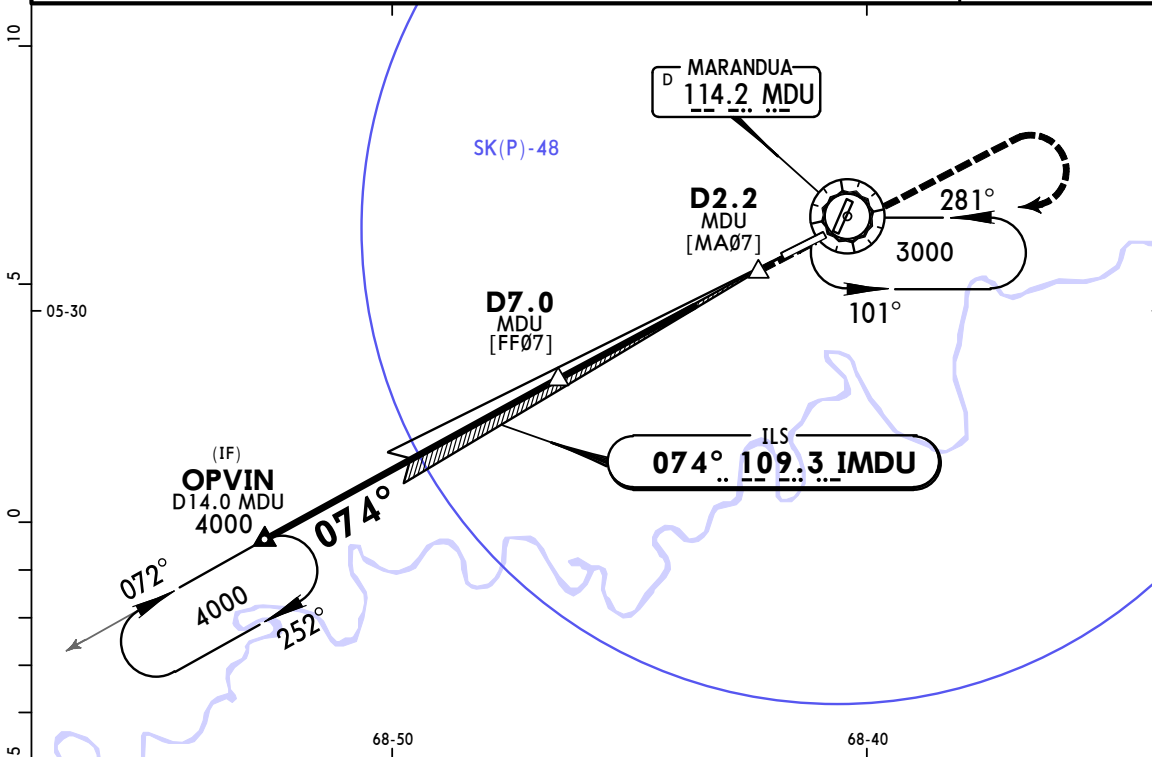
MARANDUA, COLOMBIA

CR. LUIS A. RODRIGUEZ MENESES

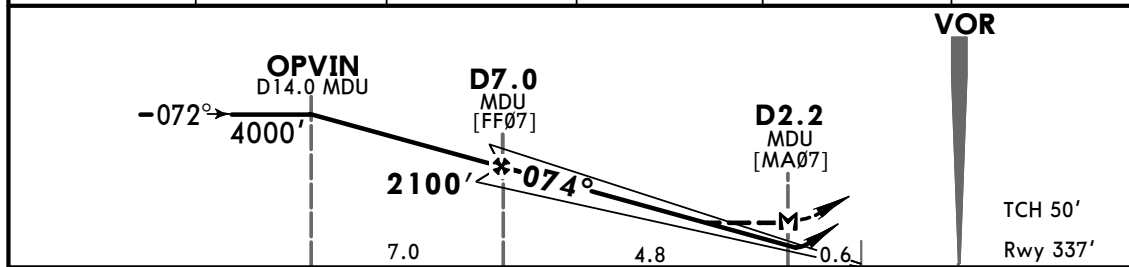
11-2 1 OCT 21 Eff 7 Oct

ILS Y or LOC Y Rwy 07

MARANDUA Approach 124.1			RODRIGUEZ MENESES Tower 118.5		
LOC IMDU 109.3	Final Apch Crs 074°	D7.0 2100' (1763')	ILS DA(H) Refer to Minimums	Apt Elev 337' Rwy 337'	2000 MSA MDU VOR
MISSED APCH: Maintain runway heading until 1000', then turn RIGHT toward MDU VOR holding pattern and 3000'.					
Alt Set: IN (hPa on req) Trans levels: FL 190 Trans alt: 18000' 1. MDU VOR DME required. 2. Do not use OPVIN and holding at MDU VOR at the same level simultaneously.					



MDU DME	7.0	6.0	5.0	4.0	3.0
ALTITUDE	2100'	1782'	1464'	1146'	827'



Gnd speed-Kts	70	90	100	120	140	160	PAPI-L	1000' RWY on hdg
GS 3.00°	372	478	531	637	743	849		
MAP at D2.2 MDU	4.8	4:07	3:12	2:53	2:24	2:03		

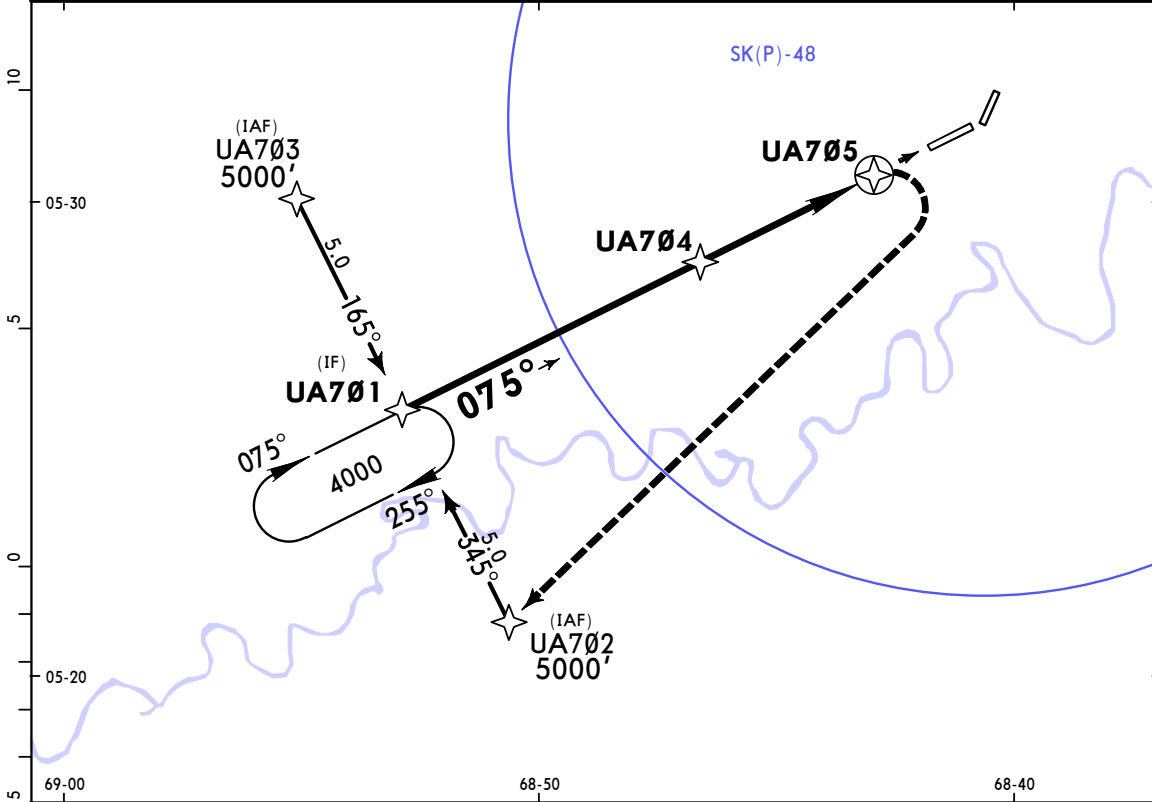
STRAIGHT-IN LANDING RWY 07		CIRCLE-TO-LAND	
ILS DA(H) A, B: 549' (212') C, D: 569' (232')		LOC (GS out) MDA(H) 740' (403')	
A	1200m	2000m	Max Kts 100 820' (483') - 1900m
B			135 830' (493') - 2800m
C			180 930' (593') - 3700m
D			205 1030' (693') - 4600m

PANS OPS

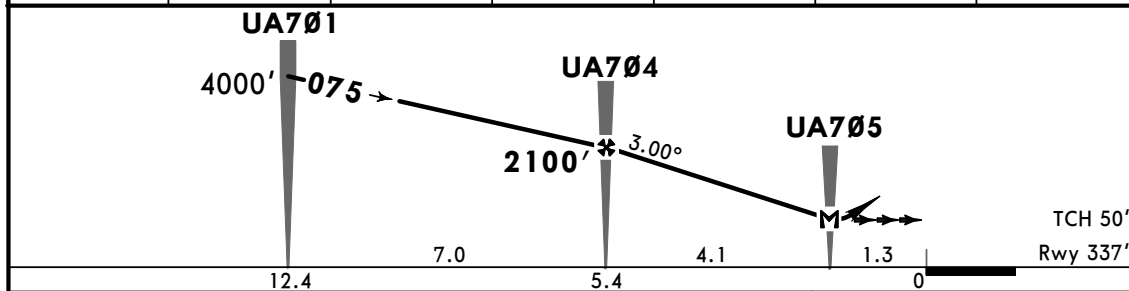
CHANGES: Apt elev, Tower frequency, prohibited area added.

© JEPPESEN, 2021. ALL RIGHTS RESERVED.

MARANDUA Approach 124.1			RODRIGUEZ MENESES Tower 118.5		
RNAV	Final Apch Crs 075°	UA704 2100' (1763')	LNAV MDA(H) 800' (463')	Apt Elev 337' Rwy 337'	TAA 25 NM IF/IAF 2000
MISSED APCH: Crossing UA705, turn RIGHT toward UA702 climbing to 4000', then proceed to the holding pattern UA701, and wait for ATC instructions.					
Alt Set: IN (hPa on req)		Trans levels: FL 190		Trans alt: 18000'	
RNP Apch					



DIST to THR	5.4	5.0	4.0	3.0	2.0	1.3
ALTITUDE	2100'	1973'	1655'	1339'	1023'	800'



Gnd speed-Kts	70	90	100	120	140	160	PAPI-L 4000' RT UA702
Descent Angle 3.00°	372	478	531	637	743	849	
MAP at UA705	4.1	3:31	2:44	2:28	2:03	1:45	

STRAIGHT-IN LANDING RWY07		CIRCLE-TO-LAND	
LNAV		MDA(H)	
MDA(H) 800' (463')		Max Kts	MDA(H)
A	1600m	100	820' (483') - 1900m
B		135	830' (493') - 2800m
C		180	930' (593') - 3700m
D	2000m	205	1030' (693') - 4600m

PANS OPS

SKUA



MARANDUA, COLOMBIA

CR. LUIS A. RODRIGUEZ MENESES

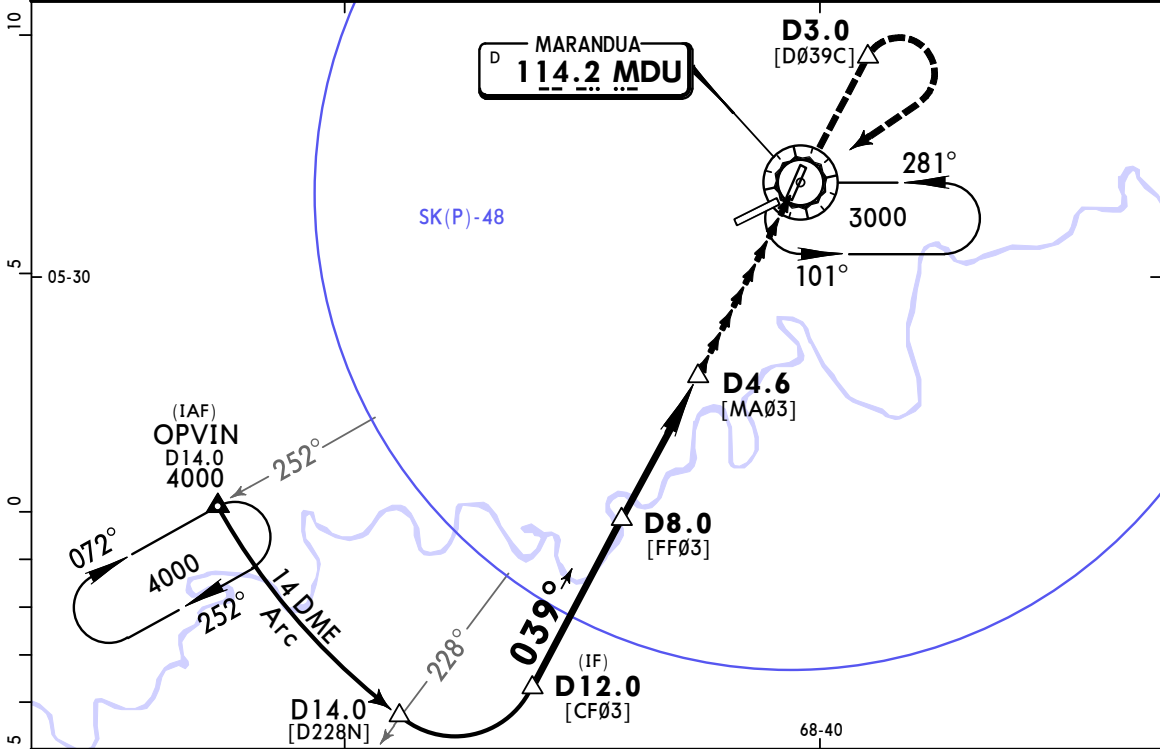
13-1

1 OCT 21
Eff 7 Oct

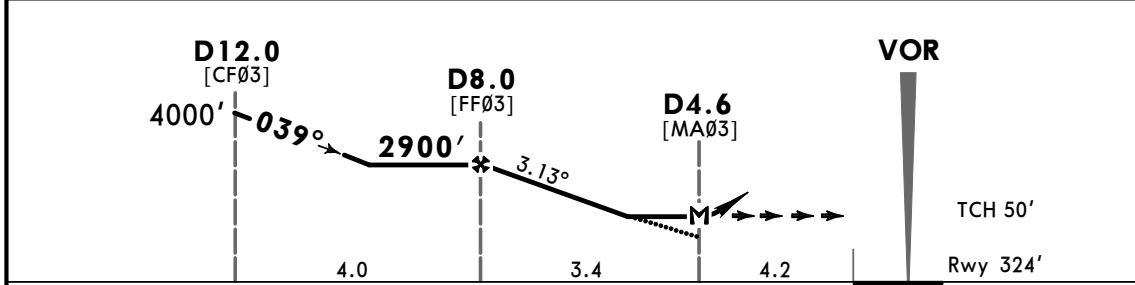
CAT A & B

VOR Z Rwy 03

MARANDUA Approach 124.1			RODRIGUEZ MENESES Tower 118.5		
VOR MDU 114.2	Final Apch Crs 039°	D8.0 2900' (2576')	MDA(H) 1830' (1506')	Apt Elev 337' Rwy 324'	2000 MSA MDU VOR
MISSED APCH: Continue final approach course until D3.0 from MDU VOR DME, then turn RIGHT toward MDU VOR DME holding pattern climbing to 3000'.					
Alt Set: IN (hPa on req) Trans levels: FL 190 Trans alt: 18000'					
1. MDU VOR DME required. 2. Do not use OPVIN and holding at MDU VOR at the same level simultaneously.					



MDU DME	8.0	7.0	6.0	5.0	4.6
ALTITUDE	2900'	2582'	2264'	1946'	1824'



Gnd speed-Kts	70	90	100	120	140	160	↑ D3.0
Descent Angle 3.13°	388	498	554	665	775	886	
MAP at D4.6							
FAF to MAP	3.4	2:55	2:16	2:02	1:42	1:27	

STRAIGHT-IN LANDING RWY03			CIRCLE-TO-LAND		
MDA(H) 1830' (1506')			MDA(H)		
A	5000m			Max Kts	2325' (1988') - 5000m
B				100	
C	NOT APPLICABLE			135	
D	NOT APPLICABLE			C	NOT APPLICABLE
				D	NOT APPLICABLE

PANS OPS

CHANGES: Apt elev, Tower frequency, prohibited area added.

© JEPPESEN, 2021. ALL RIGHTS RESERVED.

SKUA

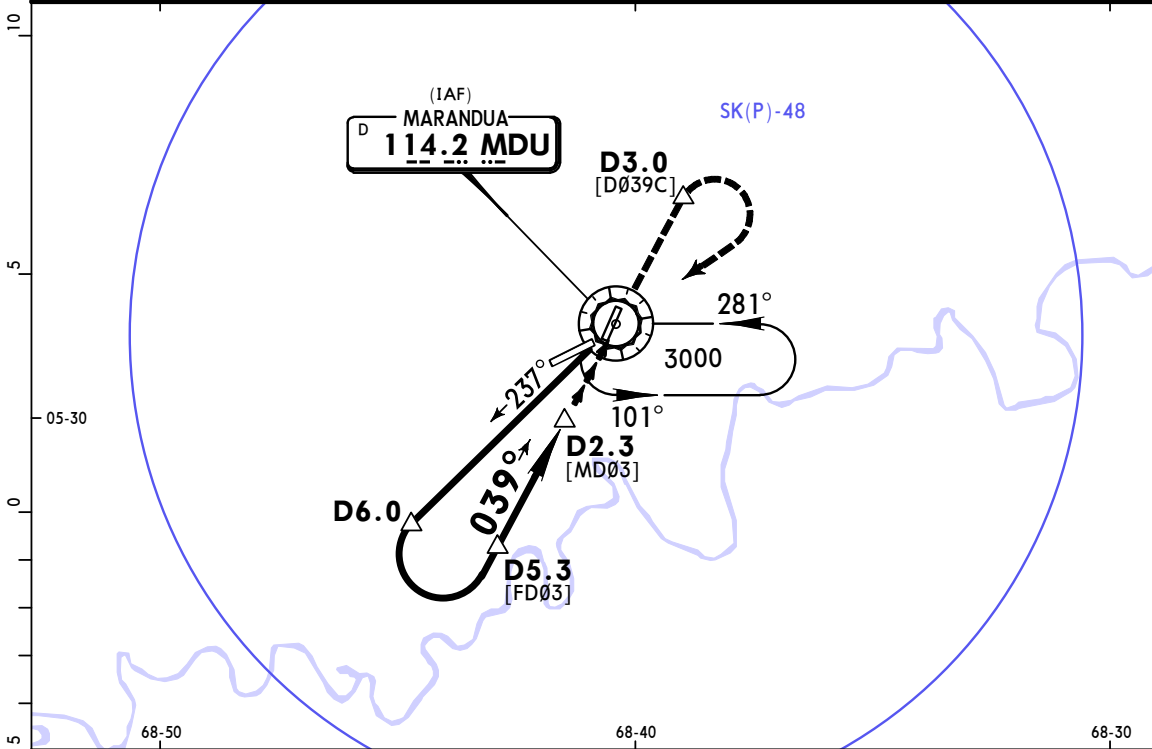
MARANDUA, COLOMBIA
VOR Y Rwy 03

CR. LUIS A. RODRIGUEZ MENESES

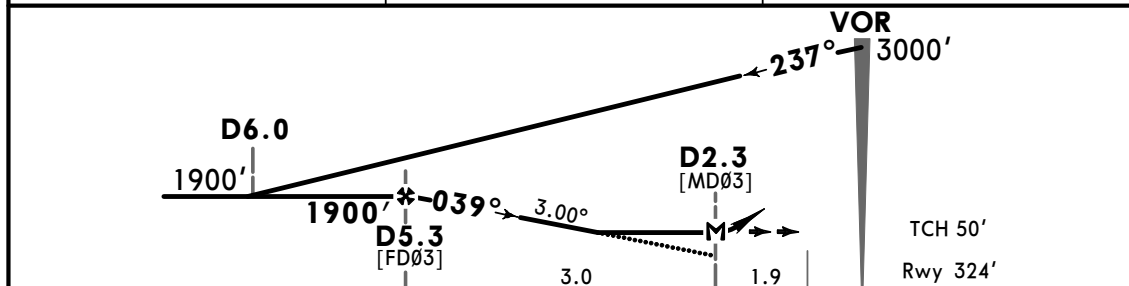
13-2

CAT A & B

MARANDUA Approach 124.1			RODRIGUEZ MENESES Tower 118.5		
VOR MDU 114.2	Final Apch Crs 039°	D5.3 1900' (1576')	MDA(H) 1830' (1506')	Apt Elev 337' Rwy 324'	2000 MSA MDU VOR
MISSED APCH: Continue final approach course until D3.0 from MDU VOR DME, then turn RIGHT toward MDU VOR DME holding pattern climbing to 3000'.					
Alt Set: IN (hPa on req) Trans levels: FL 190 Trans alt: 18000' 1. MDU VOR DME required. 2. Do not use OPVIN and holding at MDU VOR at the same level simultaneously.					



MDU DME	5.3	5.0
ALTITUDE	1900'	1805'



Gnd speed-Kts	70	90	100	120	140	160	↑ D3.0
Descent Angle 3.00°	372	478	531	637	743	849	
MAP at D2.3							
FAF to MAP	3.0	2:34	2:00	1:48	1:30	1:17	1:08

STRAIGHT-IN LANDING RWY03				CIRCLE-TO-LAND			
MDA(H) 1830' (1506')				MDA(H) _____			
A	5000m			Max Kts	2325' (1988') - 5000m		
B				100			
C				135			
D	NOT APPLICABLE			C	NOT APPLICABLE		
				D	NOT APPLICABLE		

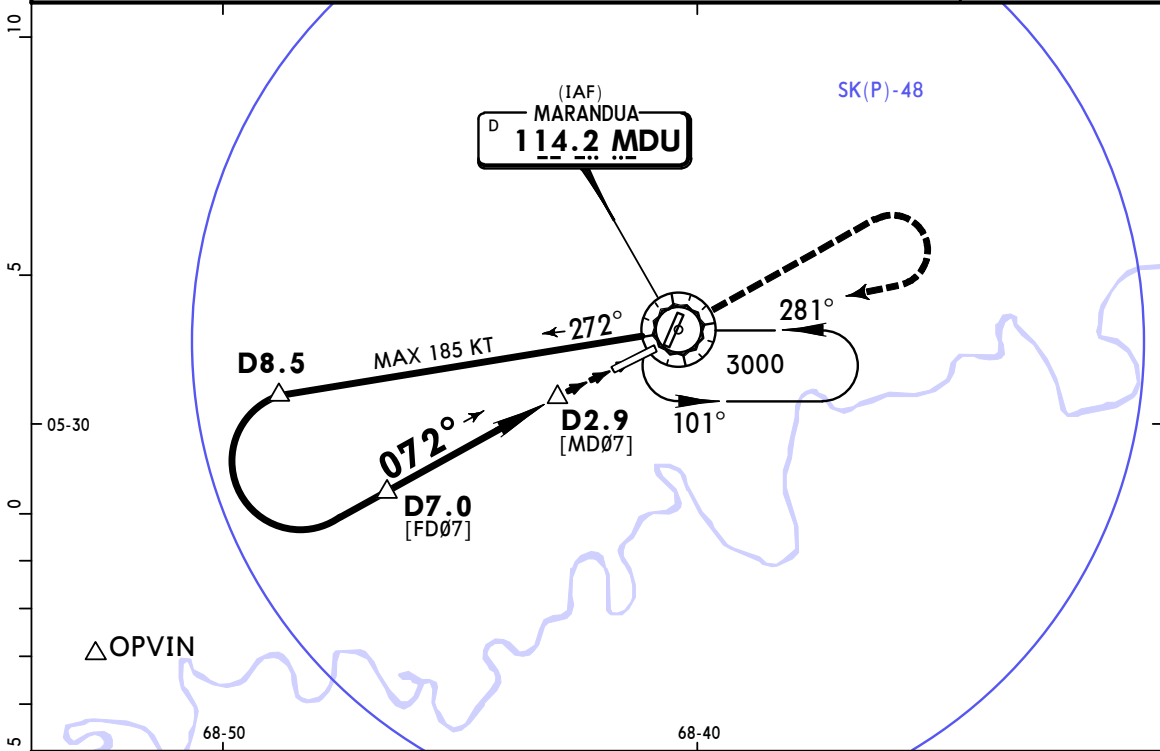
SKUA

JEPPESEN
1 OCT 21
13-3 Eff 7 Oct

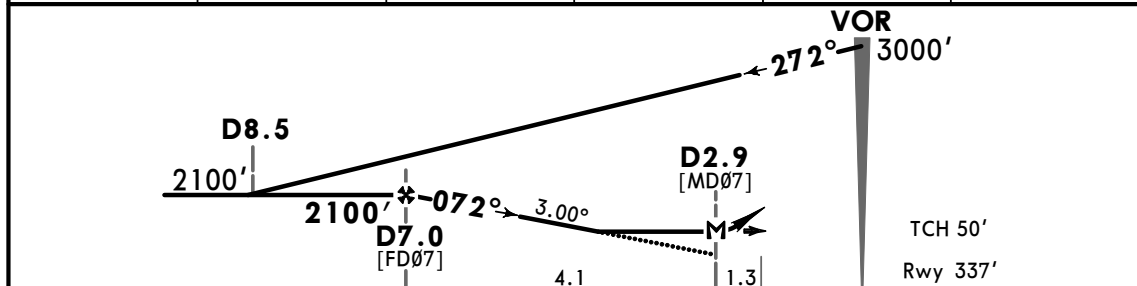
MARANDUA, COLOMBIA
VOR Z Rwy 07

CR. LUIS A. RODRIGUEZ MENESES

MARANDUA Approach 124.1			RODRIGUEZ MENESES Tower 118.5		
VOR MDU 114.2	Final Apch Crs 072°	D7.0 2100' (1763')	MDA(H) 790' (453')	Apt Elev 337' Rwy 337'	2000 MSA MDU VOR
MISSED APCH: Maintain runway heading until 1000', then turn RIGHT toward MDU VOR holding pattern and 3000'.					
Alt Set: IN (hPa on req) Trans levels: FL 190 Trans alt: 18000' 1. MDU VOR DME required. 2. Do not use OPVIN and holding at MDU VOR at the same level simultaneously.					



MDU DME	7.0	6.0	5.0	4.0	3.0
ALTITUDE	2100'	1782'	1464'	1146'	827'



Gnd speed-Kts	70	90	100	120	140	160	PAPI-L 1000' ↑
Descent Angle 3.00°	372	478	531	637	743	849	
MAP at D2.9							
FAF to MAP	4.1	3:31	2:44	2:28	2:03	1:45	

STRAIGHT-IN LANDING RWY07		CIRCLE-TO-LAND	
MDA(H) 790' (453')		Max Kts	MDA(H)
A	3000m	100	820' (483') - 1900m
B		135	830' (493') - 2800m
C		180	930' (593') - 3700m
D		205	1030' (693') - 4600m

PANS OPS

CHANGES: Apt elev, Tower frequency, prohibited area added.

© JEPPESEN, 2021. ALL RIGHTS RESERVED.

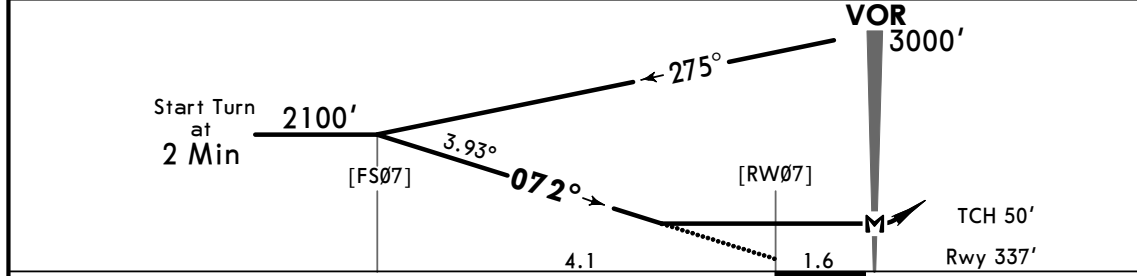
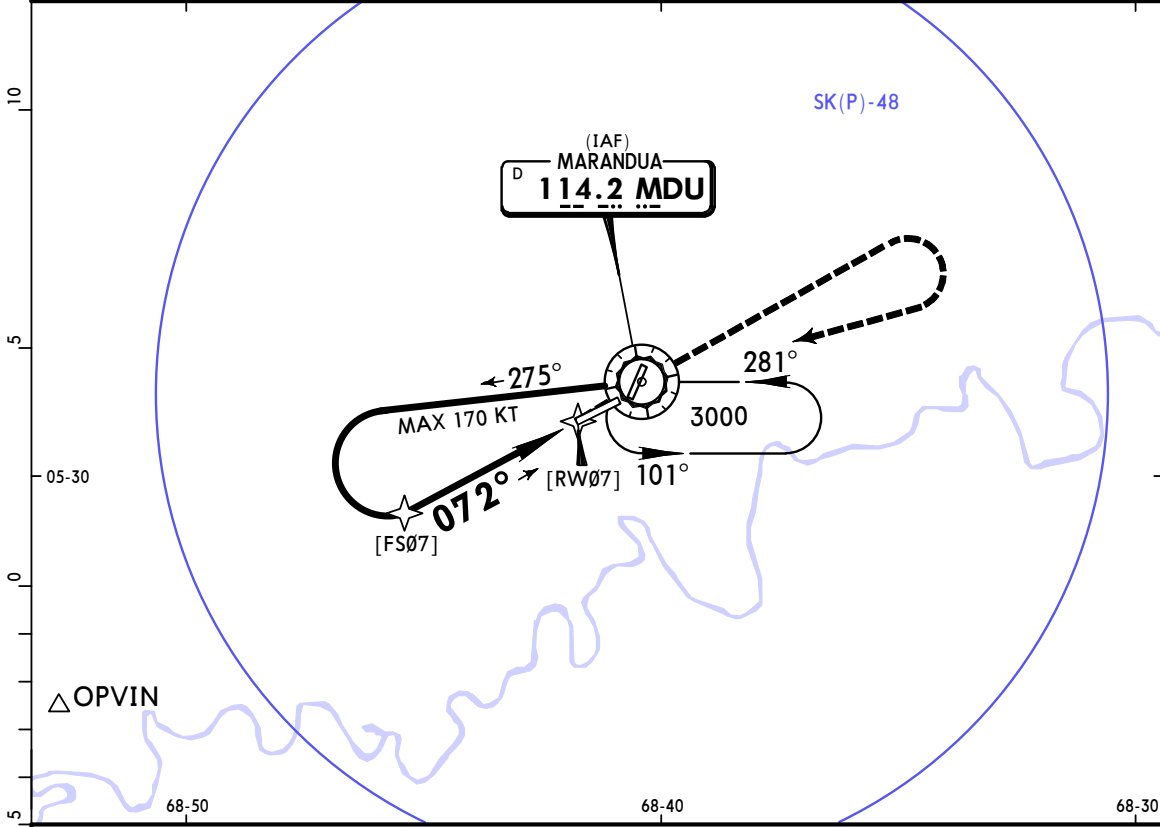
SKUA

JEPPESEN
1 OCT 21
13-4 Eff 7 Oct

MARANDUA, COLOMBIA
VOR Y Rwy 07

CR. LUIS A. RODRIGUEZ MENESES

MARANDUA Approach 124.1			RODRIGUEZ MENESES Tower 118.5		
VOR MDU 114.2	Final Apch Crs 072°	No FAF	MDA(H) 810' (473')	Apt Elev 337' Rwy 337'	2000 MSA MDU VOR
MISSED APCH: Maintain approach heading until 1000', then turn RIGHT toward MDU VOR holding pattern and 3000'.					
Alt Set: IN (hPa on req) Trans levels: FL 190 Trans alt: 18000' 1. MDU VOR required. 2. Do not use OPVIN and holding at MDU VOR at the same level simultaneously.					



Gnd speed-Kts	70	90	100	120	140	160	PAPI-L	1000'	RT	MDU 114.2
Descent Angle 3.93°	487	626	696	835	974	1113				
MAP at VOR										

STRAIGHT-IN LANDING RWY07		CIRCLE-TO-LAND	
MDA(H) 810' (473')		Max Kts	MDA(H)
A	3000m	100	820' (483') - 1900m
B		135	830' (493') - 2800m
C		180	930' (593') - 3700m
D		205	1030' (693') - 4600m

PANS OPS

CHANGES: Apt elev, Tower frequency, prohibited area added.

© JEPPESEN, 2021. ALL RIGHTS RESERVED.