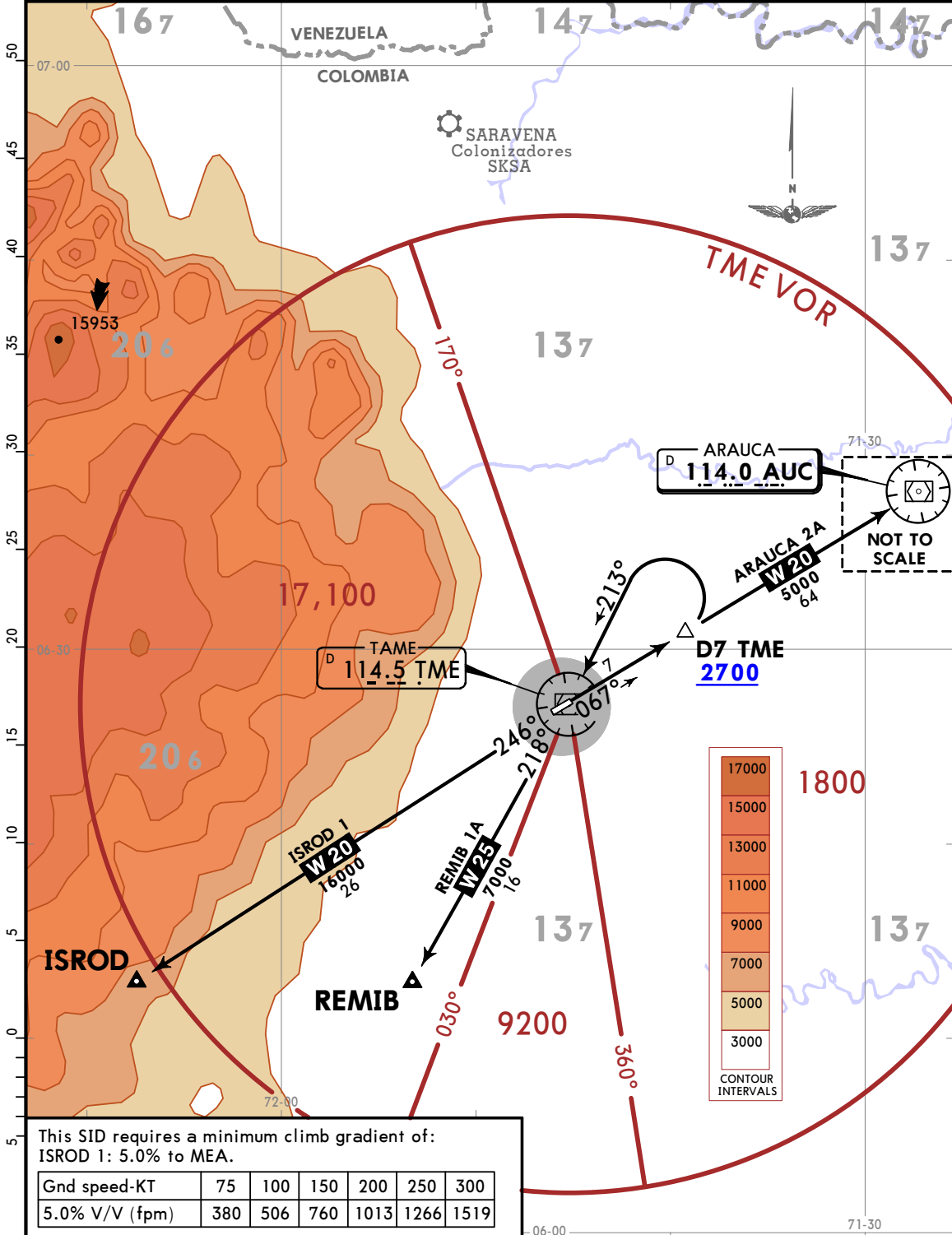


Apt Elev 1241 Trans alt: 18000

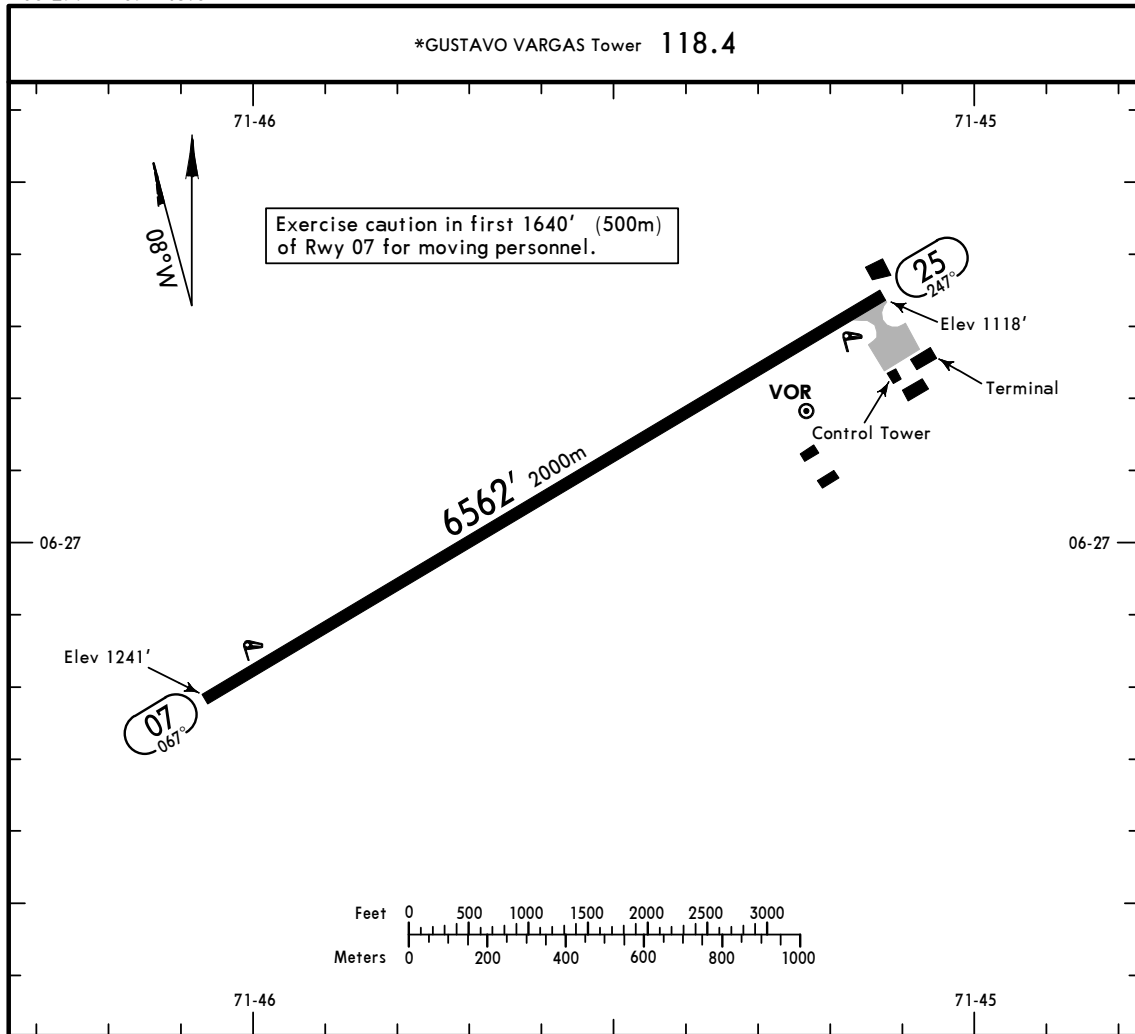
ARAUCA 2A [AUC2A]
ISROD 1 [ISROD1]
REMIB 1A [REMI1A]
DEPARTURES
(RWY 07)
CAT A, B



This SID requires a minimum climb gradient of:
ISROD 1: 5.0% to MEA.

Gnd speed-KT	75	100	150	200	250	300
5.0% V/V (fpm)	380	506	760	1013	1266	1519

*GUSTAVO VARGAS Tower 118.4



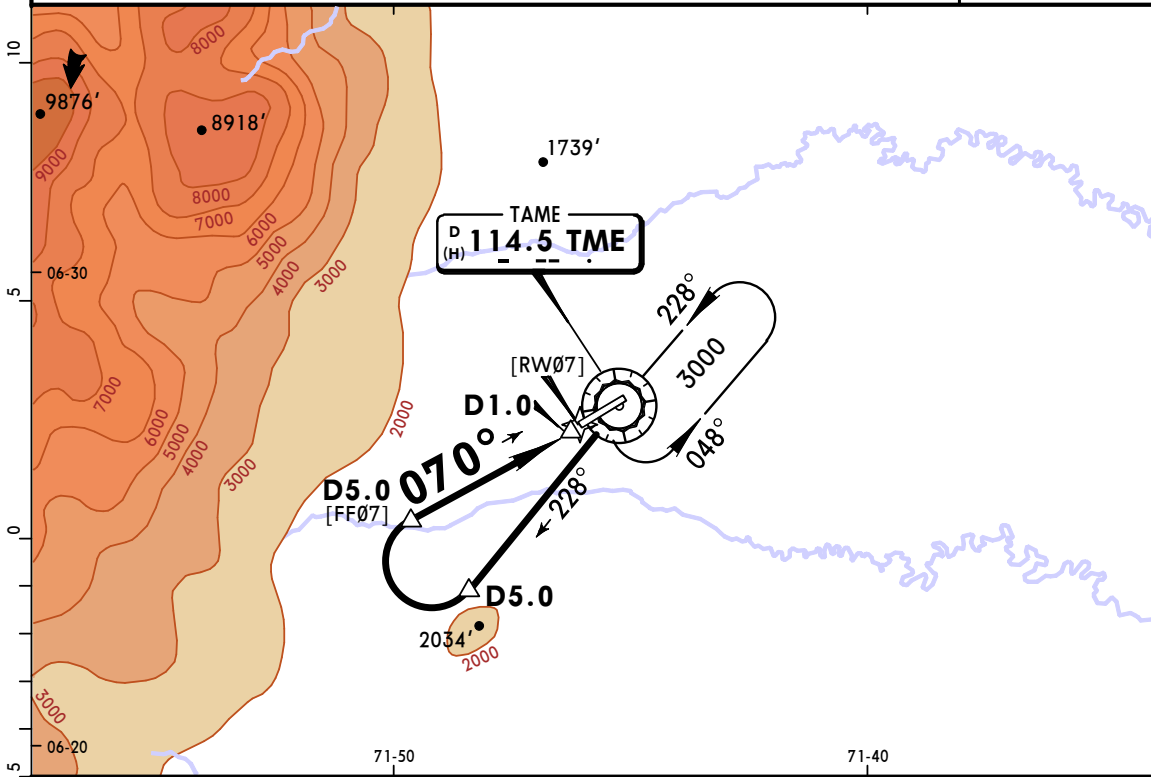
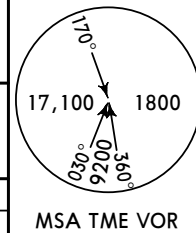
ADDITIONAL RUNWAY INFORMATION

RWY	PAPI (angle 3.0°)	USABLE LENGTHS		TAKE-OFF	WIDTH
		Threshold	Glide Slope		
07					98'
25					30m

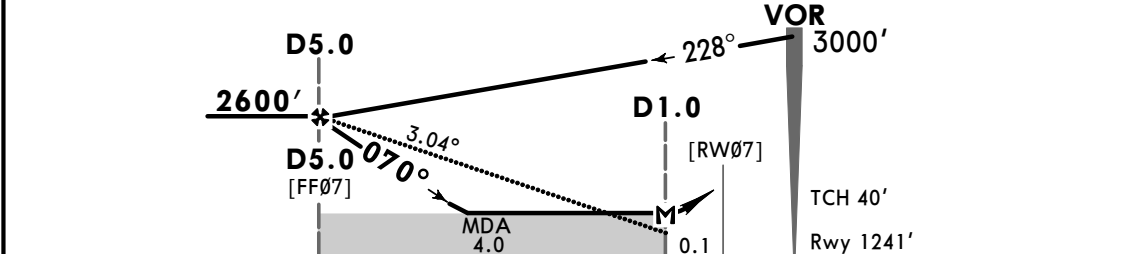
TAKE-OFF

	All Rwy's	
	DAY	NIGHT
1 & 2 Eng	1600m	NA
3 & 4 Eng	800m	

*CUCUTA Approach			*GUSTAVO VARGAS Tower		
119.6			118.4		
VOR TME 114.5	Final Apch Crs 070°	D5.0 2600' (1359')	MDA(H) 1640' (399')	Apt Elev 1241' Rwy 1241'	
MISSED APCH: Maintain approach heading climbing until TME VOR and hold.					
Alt Set: IN (hPa on req)		Trans level: FL 190		Trans alt: 18000'	
DME required.					MSA TME VOR



TME DME	5.0	4.0	3.0	2.0
ALTITUDE	2600'	2280'	1970'	1650'



Gnd speed-Kts	70	90	100	120	140	160	PAPI	↑	TME 114.5
Descent Angle 3.04°	376	484	538	645	753	861			
MAP at D1.0									
FAF to MAP	4.0	3:26	2:40	2:24	2:00	1:43	1:30		

STRAIGHT-IN LANDING RWY 07			CIRCLE-TO-LAND		
MDA(H) 1640' (399')			Max Kts		
A	2000m		100	1740' (499') -2500m	
B			135		
C	NOT APPLICABLE		C	NOT APPLICABLE	
D			D		

PANS OPS