

SKSV/SVI

EDUARDO FALLA SOLANO

15 OCT 21

10-2



SAN VICENTE DEL CAGUAN,
COLOMBIA

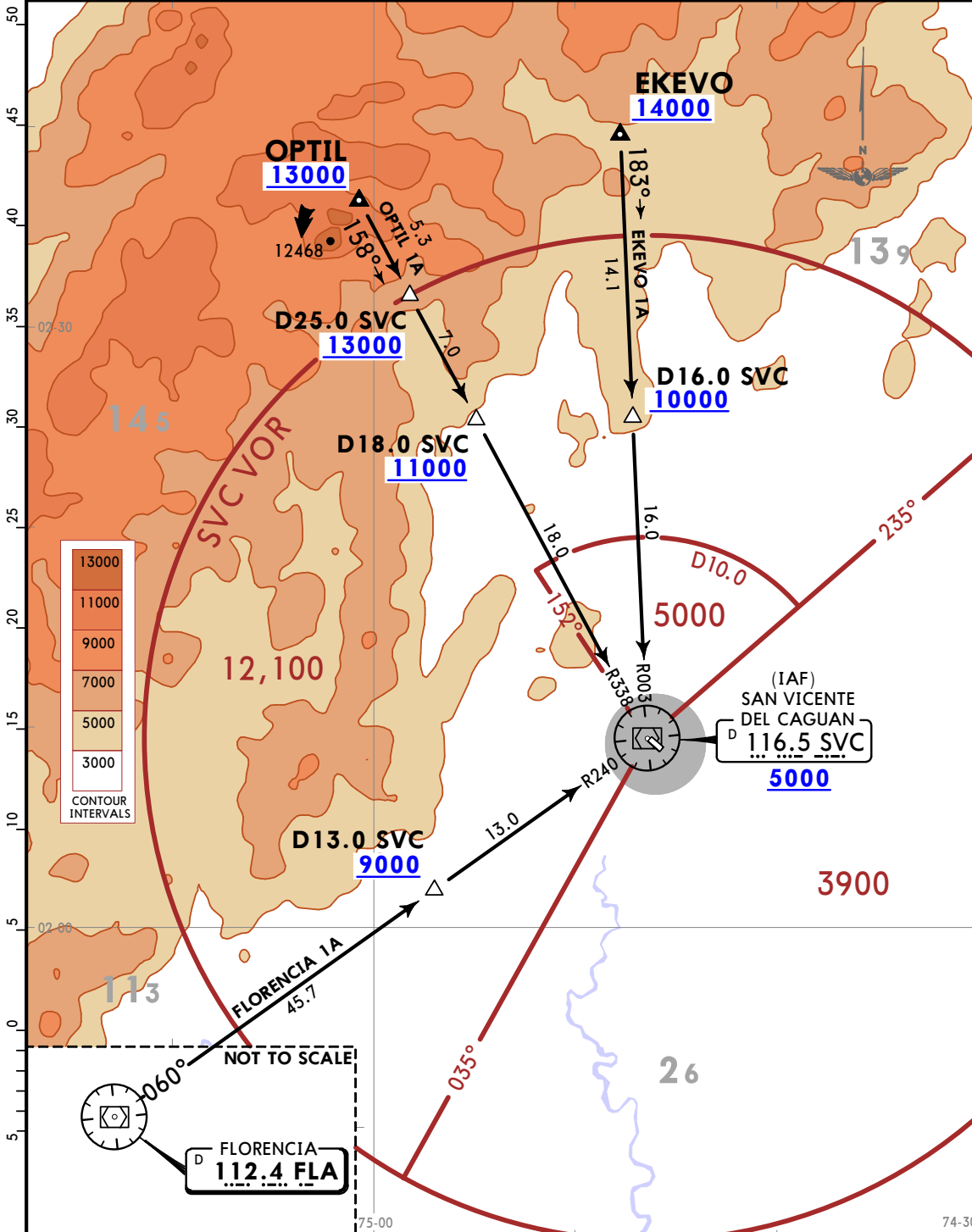
STAR

Apt Elev
879

Alt Set: hPa (IN on req)
SVC DME required.

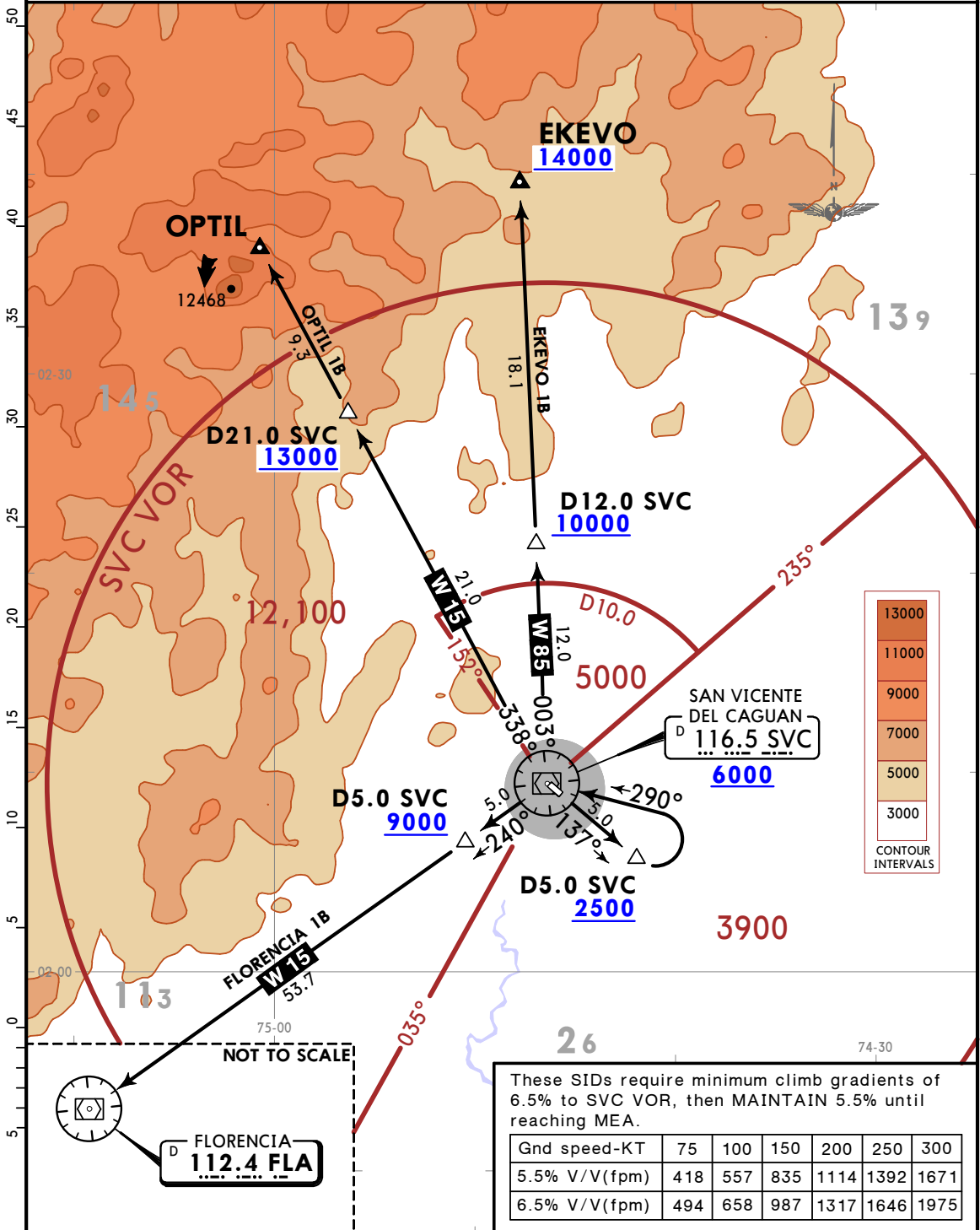
Trans level: FL190

EKEVO 1A [EKEV1A]
FLORENCIA 1A [FLA1A]
OPTIL 1A [OPTI1A]
ARRIVALS
(RWY 32)
CAT A & B



Apt Elev 879 Trans alt: 18000
SVC DME required.

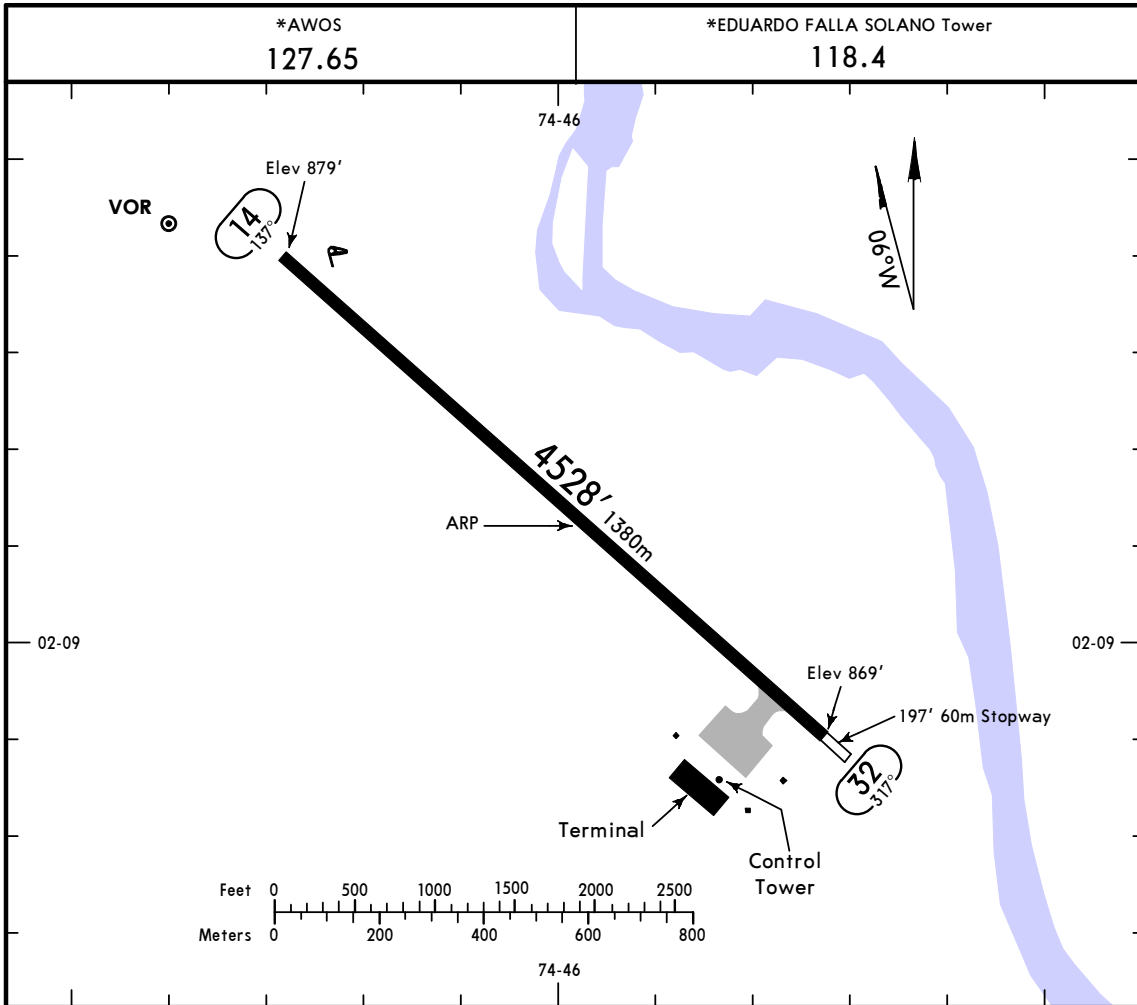
**EKEVO 1B [EKEV1B]
FLORENCIA 1B [FLA1B]
OPTIL 1B [OPTI1B]
DEPARTURES
(RWY 14)
CAT A & B**



SKSV/SVI
 Apt Elev 879'
 N02 9.1 W074 46.0

JEPPESEN
 24 AUG 18 (10-9)

SAN VICENTE DEL
 CAGUAN, COLUMBIA
 EDUARDO FALLA SOLANO



ADDITIONAL RUNWAY INFORMATION

RWY		USABLE LENGTHS		TAKE-OFF	WIDTH
		LANDING	BEYOND		
		Threshold	Glide Slope		
14	RL				75'
32	RL PAPI-R (angle 3.0°)				23m

		TAKE-OFF
		All Rwys
1 or More Eng		1600m
3 or More Eng		800m

CHANGES: Re-index, AWOS frequency added.

© JEPPESEN, 2012, 2018. ALL RIGHTS RESERVED.

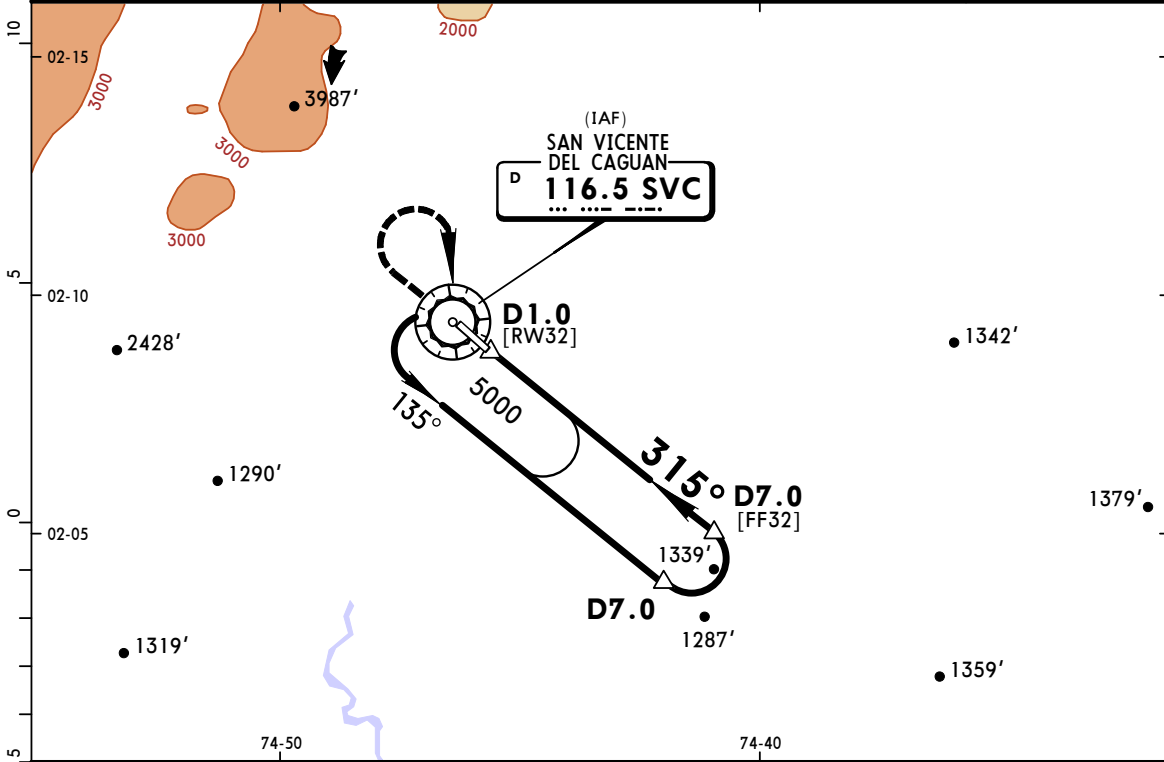
SKSV/SVI

SAN VICENTE DEL CAGUAN, COLOMBIA
VOR Rwy 32

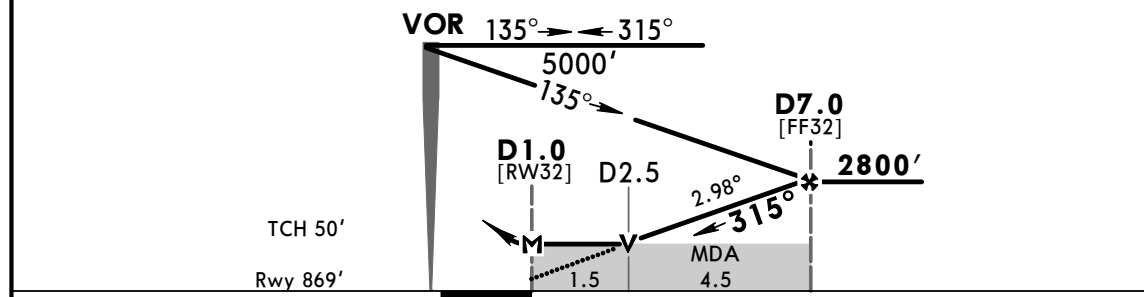
EDUARDO FALLA SOLANO

CAT A & B

*AWOS 127.65				*EDUARDO FALLA SOLANO Tower 118.4	
VOR SVC 116.5	Final Apch Crs 315°	Minimum Alt D7.0 2800' (1931')	MDA(H) 1420' (551')	Apt Elev 879' Rwy 869'	
MISSED APCH: Turn RIGHT climbing to 5000' to SVC VOR holding pattern.					
Alt Set: IN (hPa on req) 1. SVC DME Required.		Trans level: FL 190		Trans alt: 18000'	
					MSA SVC VOR ① Within 10 NM 5000'.



SVC DME	3.0	4.0	5.0	6.0
ALTITUDE	1530'	1850'	2160'	2480'



Gnd speed-Kts	70	90	100	120	140	160	PAPI-R 5000' RT SVC 116.5
Descent angle	2.98°	369	474	527	633	738	
MAP at D1.0							

STRAIGHT-IN LANDING RWY 32 MDA(H) 1420' (551')		CIRCLE-TO-LAND	
A	2600m	Max Kts	MDA(H) 1420' (541') -2600m
B		100	
C		135	1520' (641') -3100m
D	NOT APPLICABLE	C	NOT APPLICABLE
		D	NOT APPLICABLE

PANS OPS 3

CHANGES: AWOS frequency added.

© JEPPESEN, 2014, 2018. ALL RIGHTS RESERVED.