

SKSP/ADZ

GUSTAVO ROJAS PINILLA 26 JAN 18 (10-1R)

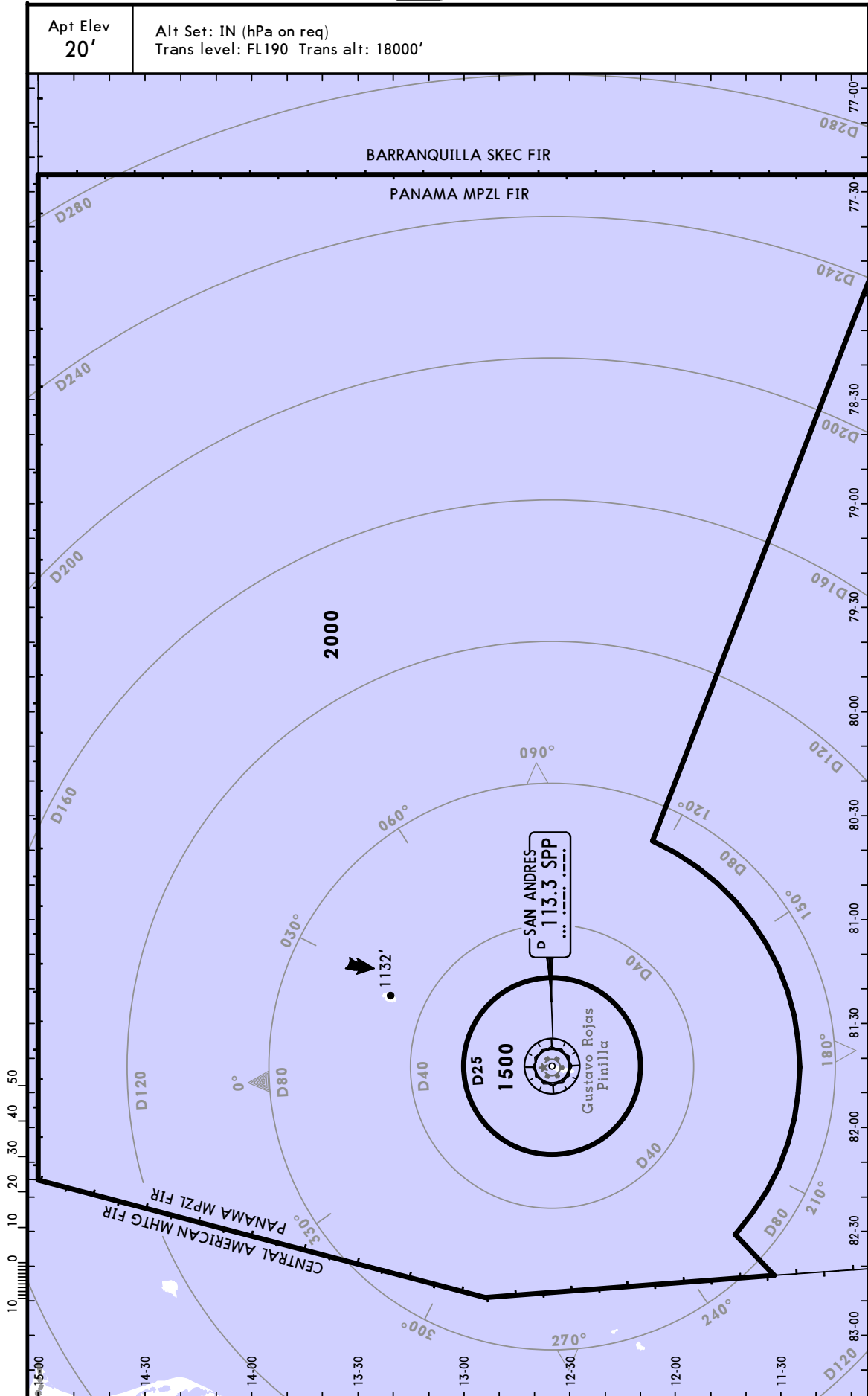
JEPPESEN

SAN ANDRES, COLOMBIA

MINIMUM ALTITUDES

Apt Elev
20'

Alt Set: IN (hPa on req)
Trans level: FL190 Trans alt: 18000'



CHANGES: Chart label.

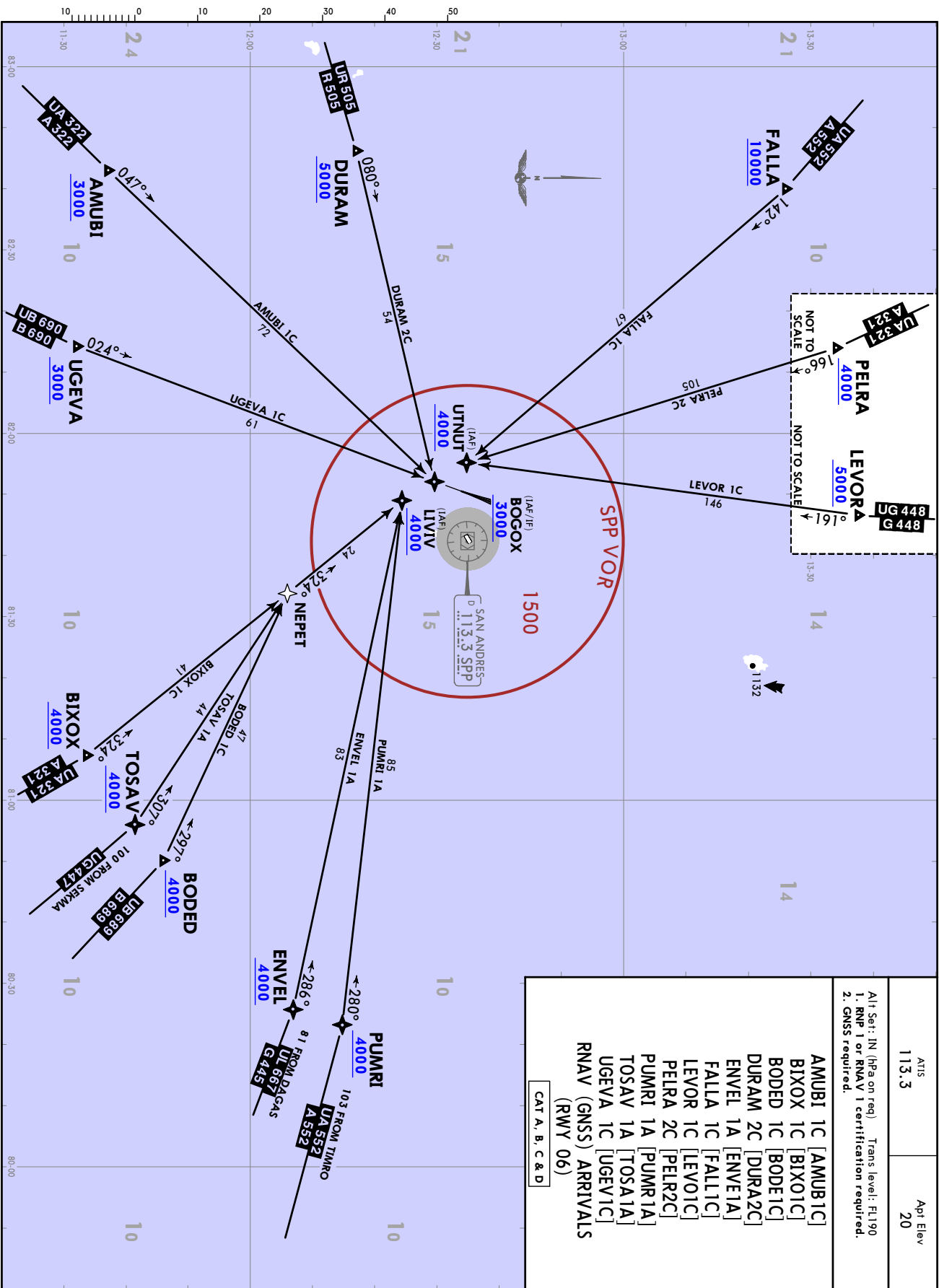
© JEPPESEN, 2016, 2018. ALL RIGHTS RESERVED.

ATIS	113.3	Apr Elev	20
------	-------	----------	----

Alt Set: IN (hPa on req) Trans level: FL190
1. RNP 1 or RNAV 1 certification required.
2. GNSS required.

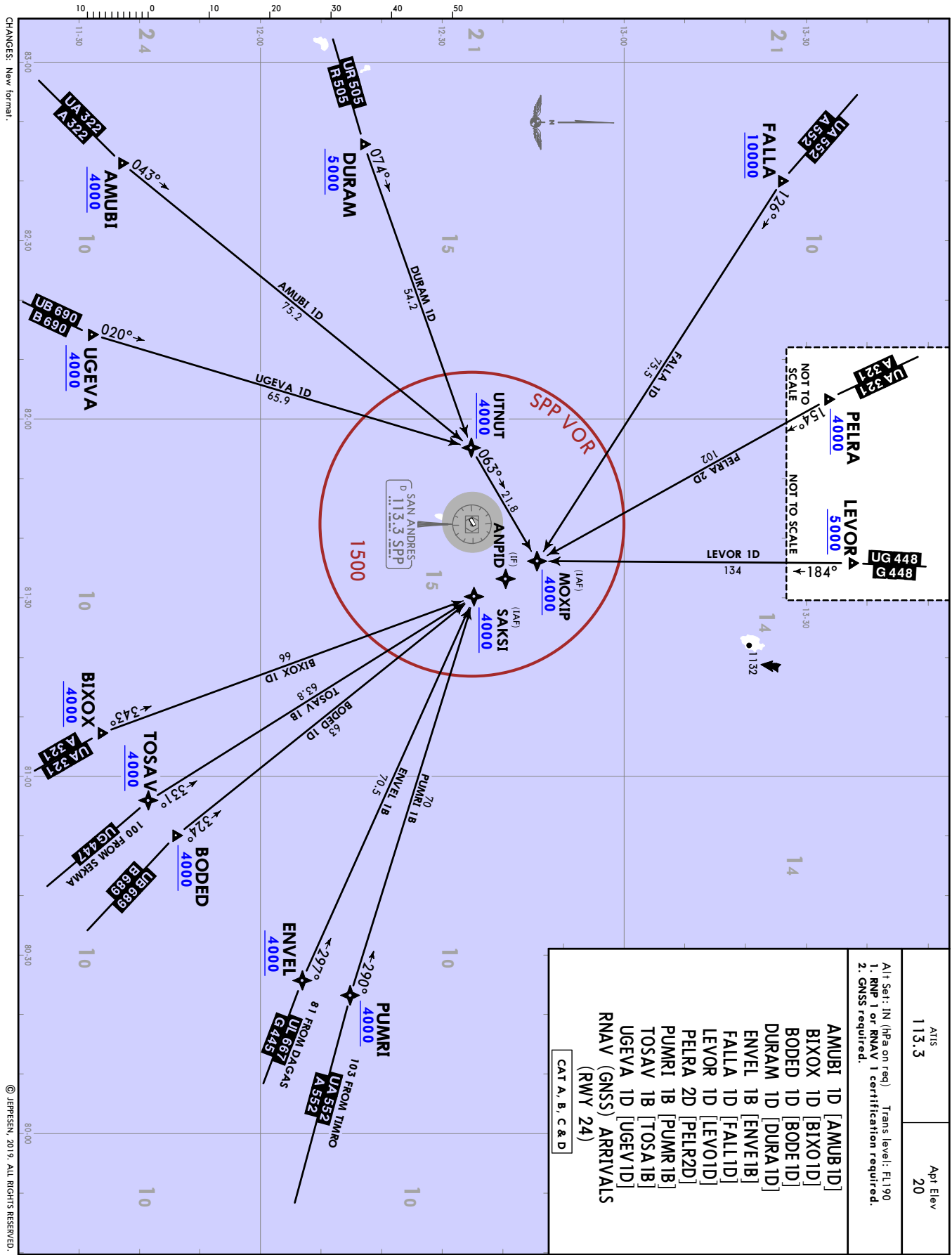
- AMUBI 1C [AMUB1C]
- BIXOX 1C [BIXO1C]
- BODED 1C [BODE1C]
- DURAM 2C [DURA2C]
- ENVEL 1A [ENVE1A]
- FALLA 1C [FALL1C]
- LEVOR 1C [LEVO1C]
- PELRA 2C [PELR2C]
- PUMRI 1A [PUMR1A]
- TOSAV 1A [TOSA1A]
- UGEVA 1C [UGEV1C]
- RNAV (GNSS) ARRIVALS
(RWY 06)

CAT A, B, C & D

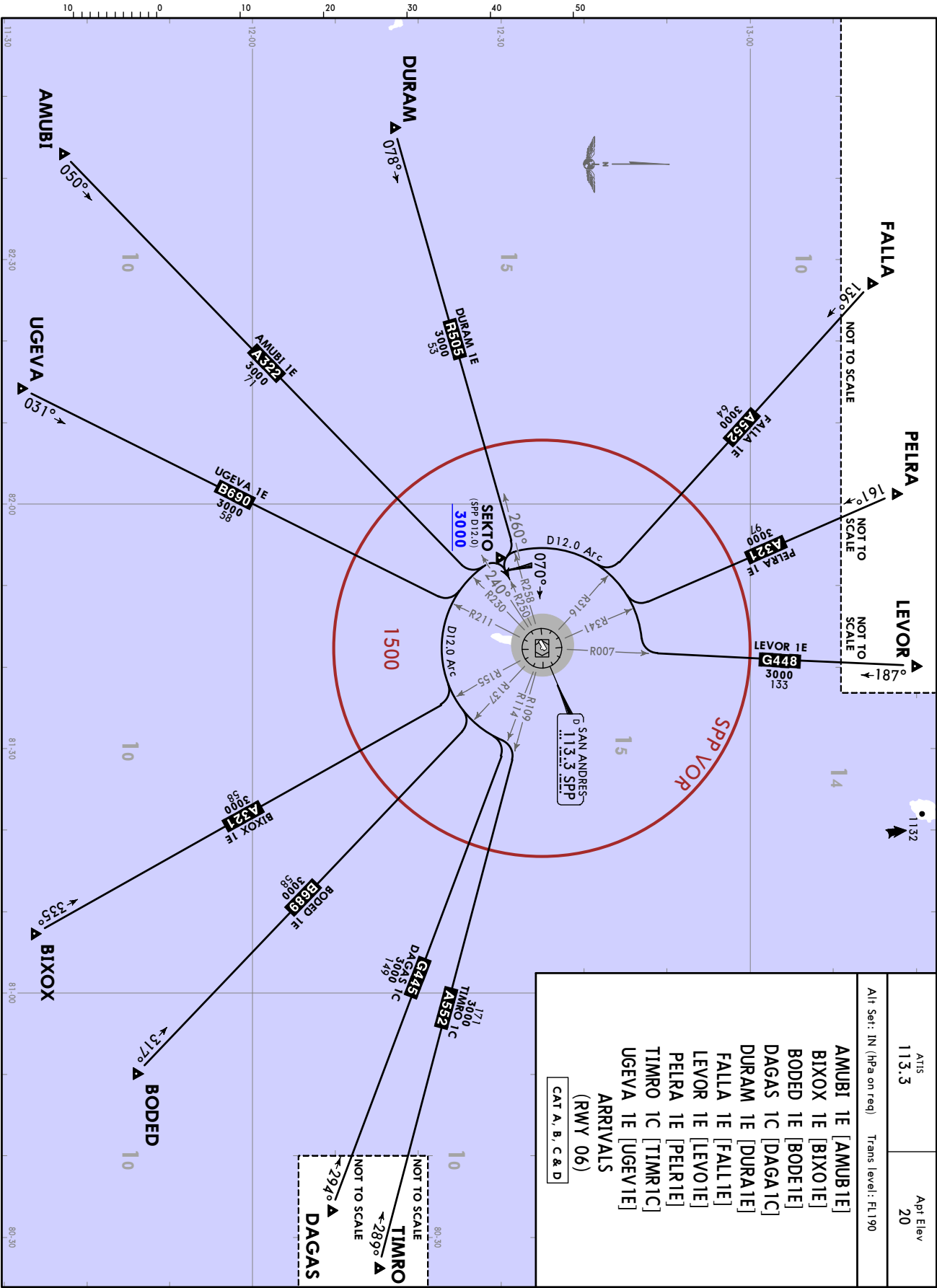


ATIS	113.3	Apt Elev	20
Alt Set: IN (hPa on req) Trans level: FL190			
1. RNP 1 or RNAV 1 certification required.			
2. GNSS required.			

AMUBI 1D [AMUB1D]
BIXOX 1D [BIXO1D]
BODED 1D [BODE1D]
DURAM 1D [DURA1D]
ENVEL 1B [ENVE1B]
FALLA 1D [FALL1D]
LEVOR 1D [LEVO1D]
PELRA 2D [PELR2D]
PUMRI 1B [PUMR1B]
TOSAV 1B [TOSA1B]
UGEVA 1D [UGEV1D]
RNAV (GNSS) ARRIVALS (RWY 24)
CAT A, B, C & D



CHANGES: New format. © JEPPesen, 2019. ALL RIGHTS RESERVED.



CHANGES: New procedures, chart reinforced.

© JEPPESSEN, 2019, 2021. ALL RIGHTS RESERVED.

ATIS 113.3	Apt Elev 20
Arr: IN (hPa on req)	Trans level: FL190
AMUBI 1E [AMUB1E] BIXOX 1E [BIXO1E] BODED 1E [BODE1E] DAGAS 1C [DAGA1C] DURAM 1E [DURA1E] FALLA 1E [FALL1E] LEVOR 1E [LEVO1E] PELRA 1E [PELR1E] TIMRO 1C [TIMR1C] UGEVA 1E [UGEVI1E]	
ARRIVALS (RWY 06) CAT A, B, C & D	

SKSP/ADZ
GUSTAVO ROJAS PINILLA

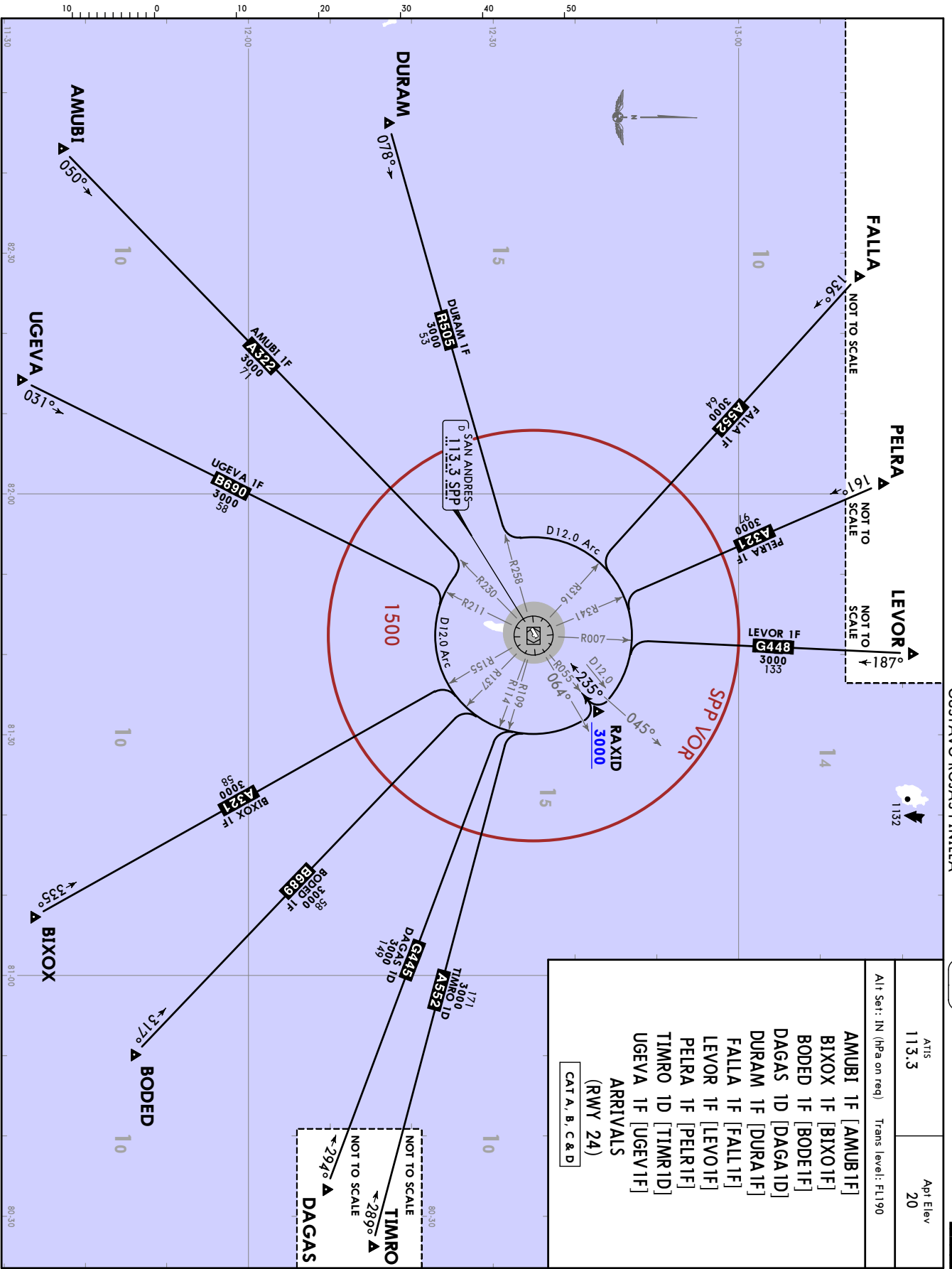
JEPPESEN SAN ANDERS, COLOMBIA
11 JUN 21 10-20 EFF 17 JUN
STAR

ATIS	Apt Elev
113.3	20

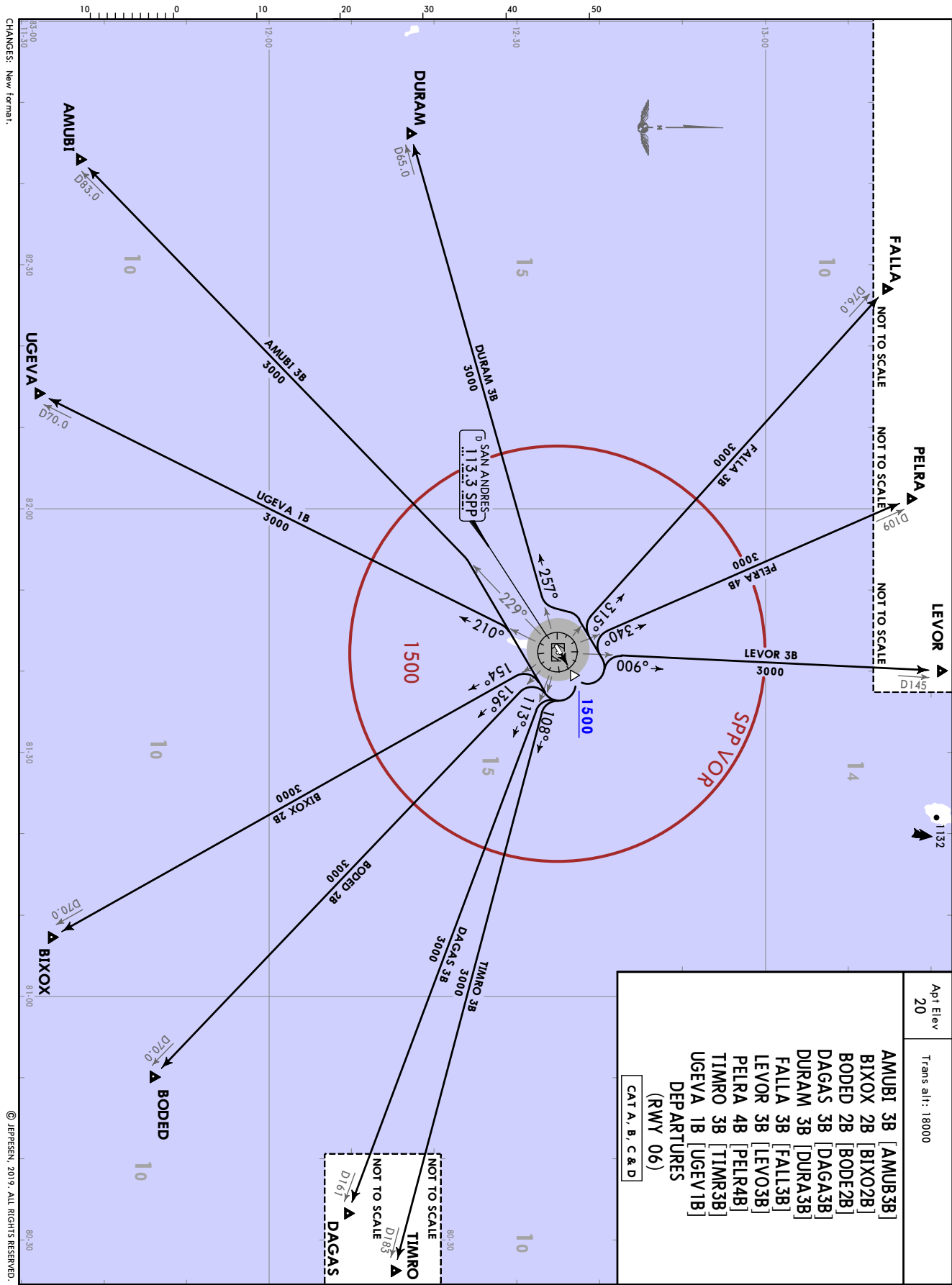
Alt Set: IN (hPa on req) Trans level: FLL90

- AMUBI 1F [AMUB1F]
- BIXOX 1F [BIXO1F]
- BODED 1F [BODE1F]
- DAGAS 1D [DAGA1D]
- DURAM 1F [DURA1F]
- FALLA 1F [FALL1F]
- LEVOR 1F [LEVO1F]
- PELRA 1F [PELR1F]
- TIMRO 1D [TIMR1D]
- UGEVA 1F [UGEV1F]

ARRIVALS
(RWY 24)
CAT A, B, C & D



CHANGES: New procedures, chart reviewed.
© JEPPESEN, 2019, 2021. ALL RIGHTS RESERVED.



CHANGES: New format.

© JEPPesen, 2019. ALL RIGHTS RESERVED.

SKSP / ADZ
GUSTAVO ROJAS PINILLA

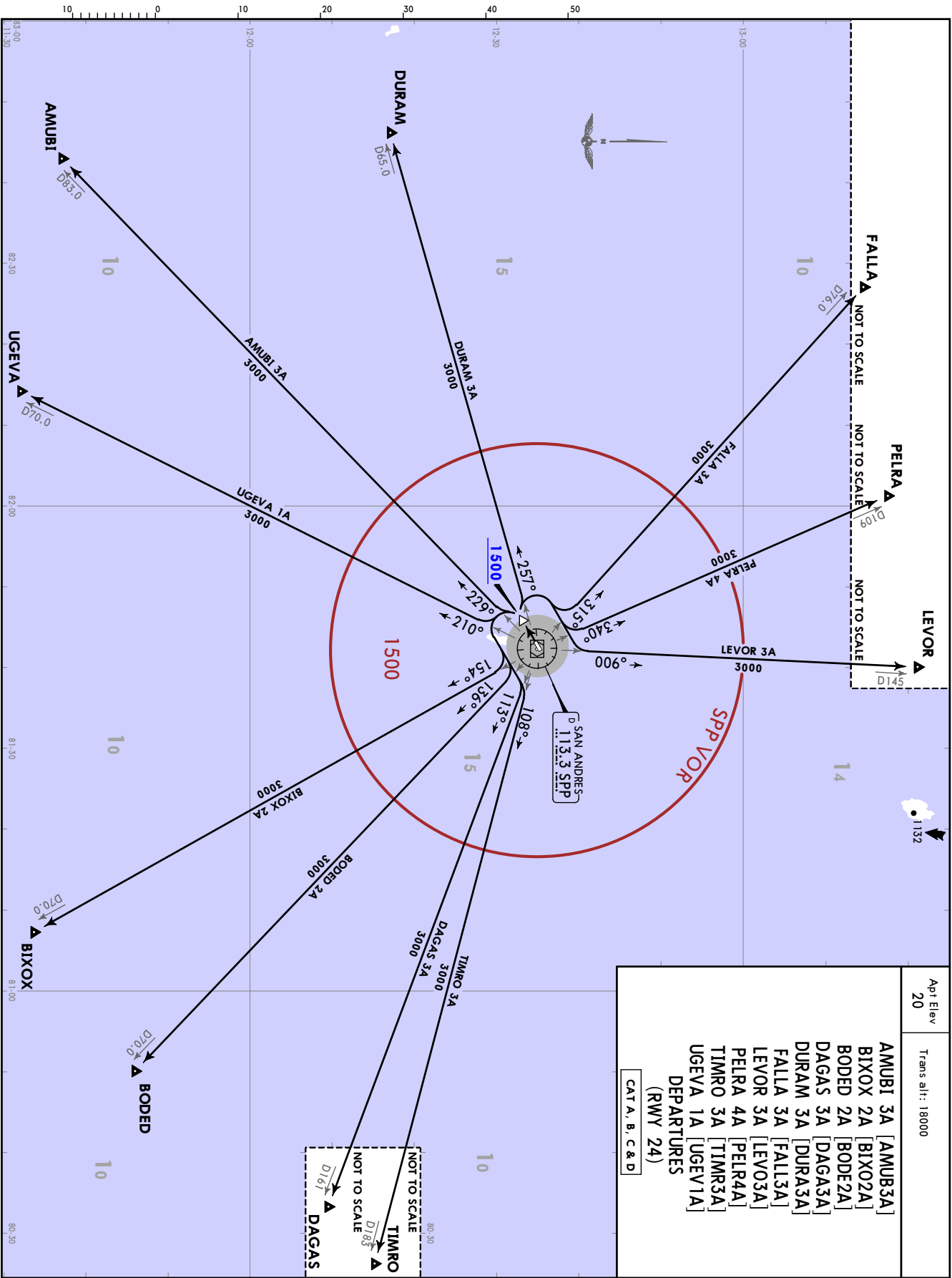
31 MAY 19 (10-3A)

JEPPesen

SAN ANDRES, COLOMBIA
SID

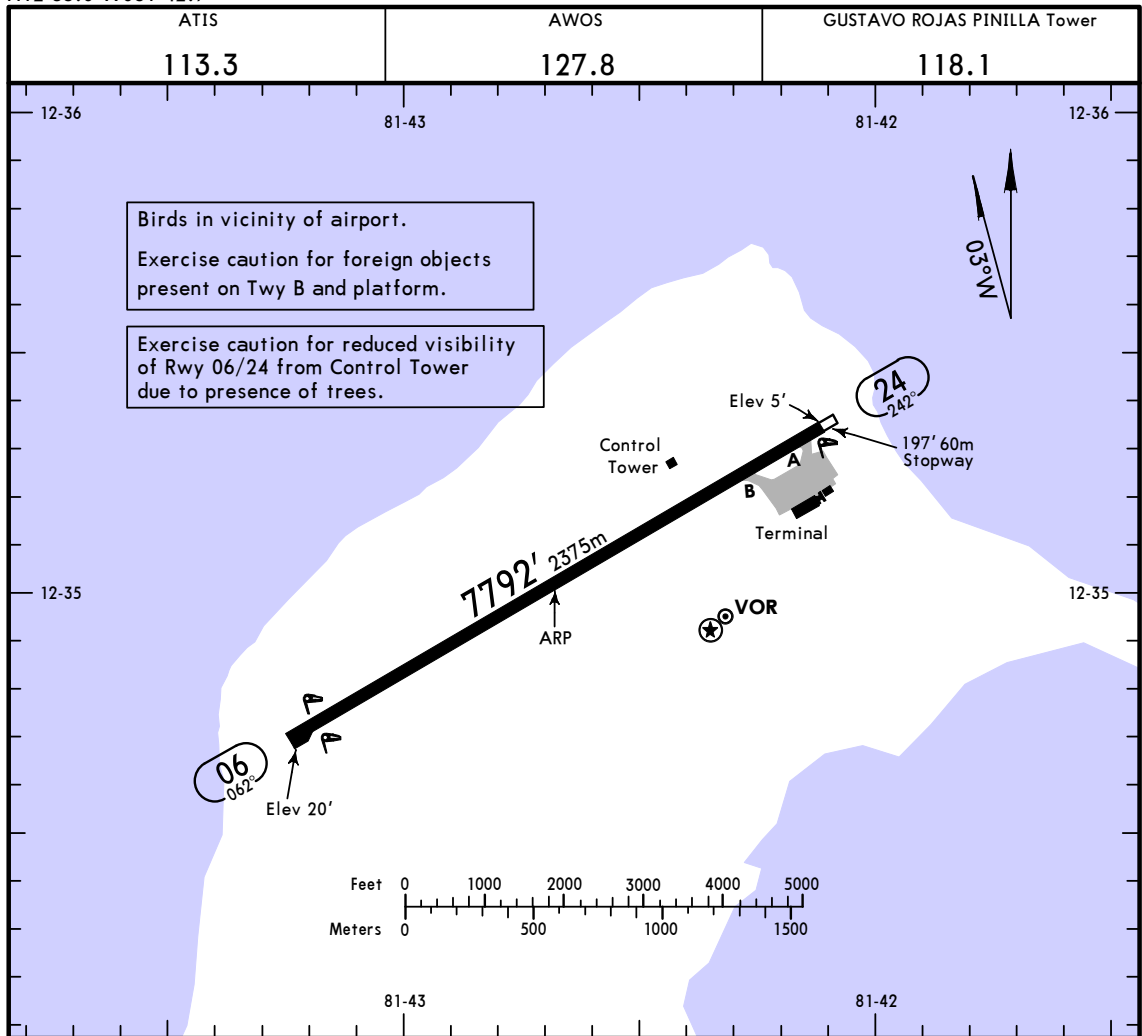
Apt Elev
20
Trans alt: 18000

AMUBI 3A [AMUB3A]
BIXOX 2A [BIXO2A]
BODED 2A [BODE2A]
DAGAS 3A [DAGAS3A]
DURAM 3A [DURAS3A]
FALLA 3A [FALL3A]
LEVOR 3A [LEVO3A]
PELRA 4A [PELR4A]
TIMRO 3A [TIMR3A]
UGEVA 1A [UGEV1A]
DEPARTURES (RWY 24)
CAT A, B, C & D



CHANGES: New format.

© JEPPesen, 2019. ALL RIGHTS RESERVED.



ADDITIONAL RUNWAY INFORMATION

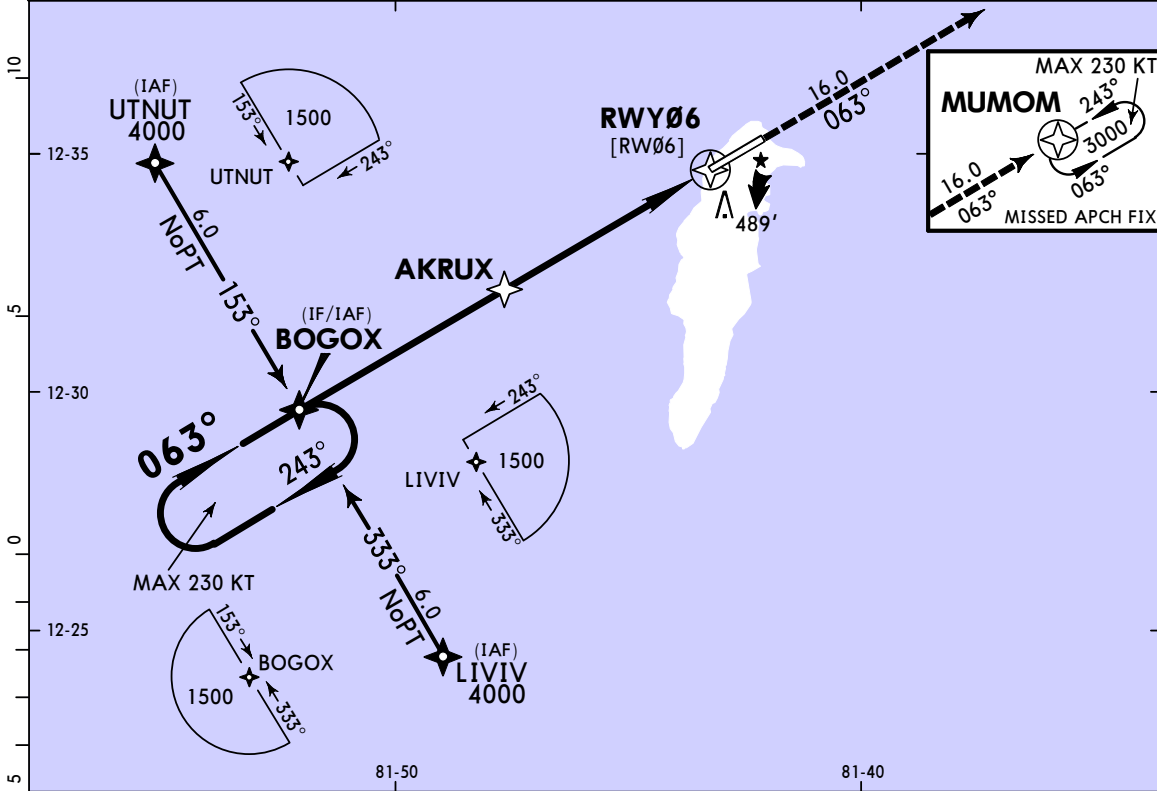
RWY		USABLE LENGTHS			WIDTH
		LANDING BEYOND Threshold	Glide Slope	TAKE-OFF	
06	HIRL CL PAPI (angle 3.0°)				148'
24	HIRL CL PAPI-R (angle 3.0°)				45m

TAKE-OFF

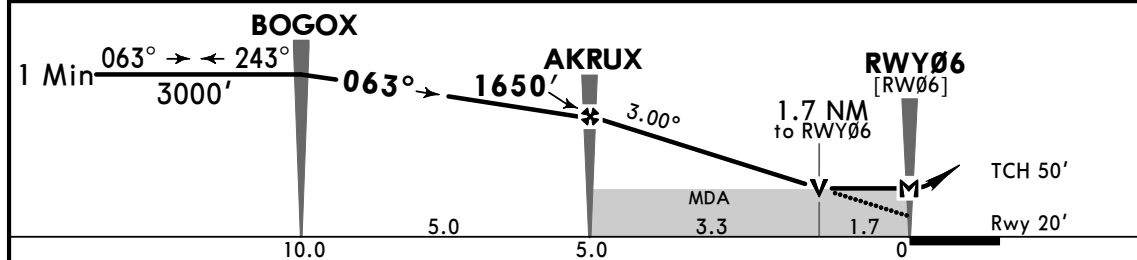
	All Rwys	Rwy 06	Rwy 24
	1 Eng	600' - 3000m	
2 Eng	1 hour alternate (1 Eng inop) 500m	630' - 4000m	420' - 3200m
3 & 4 Eng	2 hour alternate (1 Eng inop) 500m		

1 In order to apply the lower than standard take-off minimums the following is mandatory: 1. Authorization of the Colombian Civil Aeronautics Secretary of Air Security. 2. An instrument departure for engine failure after V1, approved by Colombian Civil Aeronautics Direction of Navigation Service or from the Secretary of Air Security.

ATIS 113.3		AWOS 127.8		SAN ANDRES Approach 119.3		GUSTAVO ROJAS PINILLA Tower 118.1		
RNAV	Final Apch Crs 063°	AKRUX 1650'(1630')	LNAV/VNAV DA(H) 573'(553')	Apt Elev 20' Rwy 20'		TAA 25 NM BOGOX, LIVIV UTNUT		
MISSED APCH: Climb on runway heading, 063°, to MUMOM and hold at 3000'.								
RNP Apch	Alt Set: IN (hPa on req)		Trans level: FL 190		Trans alt: 18000'			
For uncompensated Baro-VNAV systems, LNAV/VNAV not authorized below 5°C or above 41°C.								



DIST to RWY06	5.0	4.0	3.0	2.0
ALTITUDE	1650'	1332'	1014'	695'



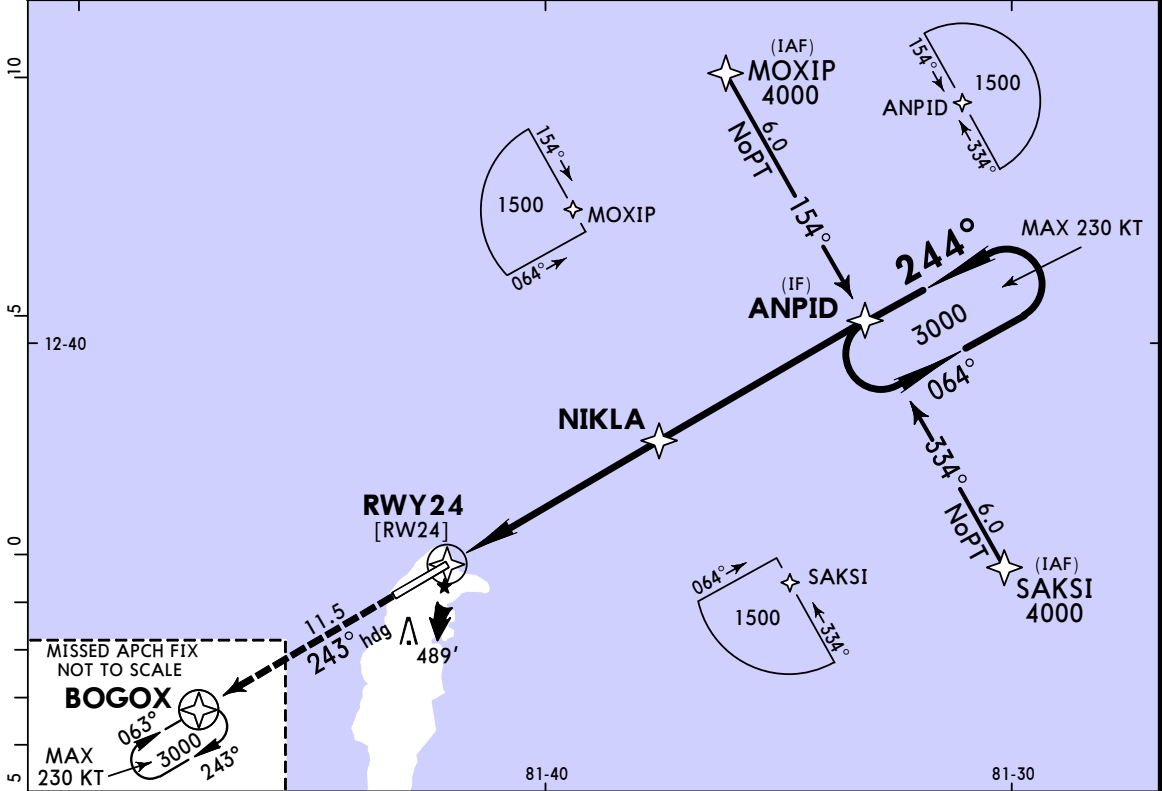
Gnd speed-Kts	70	90	100	120	140	160	PAPI	Rwy hdg to MUMOM 063°	
Descent Angle	3.00°	372	478	531	637	743			849
MAP at RWY06									
AKRUX to MAP	5.0	4:17	3:20	3:00	2:30	2:09	1:53		

STRAIGHT-IN LANDING RWY 06

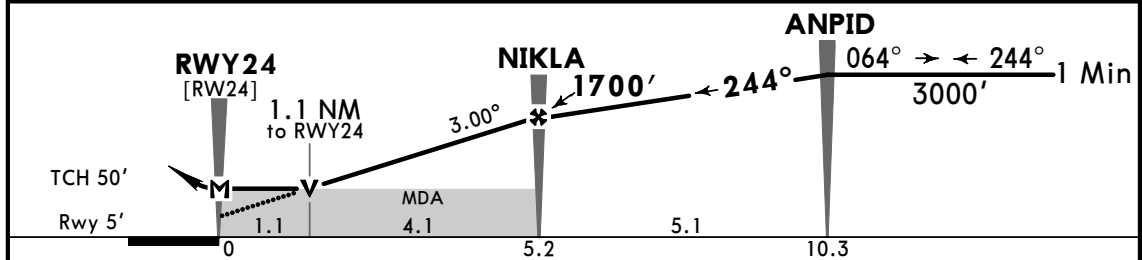
LNAV/VNAV DA(H) 573'(553')		LNAV MDA(H) 630'(610')	
A			2800m
B	2300m		
C			3000m
D			

PANS OPS

ATIS 113.3		AWOS 127.8		SAN ANDRES Approach 119.3		GUSTAVO ROJAS PINILLA Tower 118.1		
RNAV	Final Apch Crs 244°	NIKLA 1700' (1695')	LNAV/VNAV DA(H) 395' (390')	Apt Elev 20' Rwy 5'		TAA 25 NM ANPID, MOXIP SAKSI		
MISSED APCH: Climb on heading 243° to BOGOX, holding at 3000'. Cross BOGOX at 1900' or above.								
RNP Apch	Alt Set: IN (hPa on req)		Trans level: FL 190		Trans alt: 18000'			
For uncompensated Baro-VNAV systems, LNAV/VNAV not authorized below 5°C or above 41°C.								



DIST to RWY24	2.0	3.0	4.0	5.0
ALTITUDE	692'	1011'	1329'	1647'



Gnd speed-Kts	70	90	100	120	140	160	PAPI-R	↑ on 243° hdg to BOGOX	
Descent Angle	3.00°	372	478	531	637	743			849
MAP at RWY24									

STRAIGHT-IN LANDING RWY 24	
LNAV/VNAV DA(H) 395' (390')	LNAV MDA(H) 520' (515')
1800m	2600m
2800m	

PANS OPS

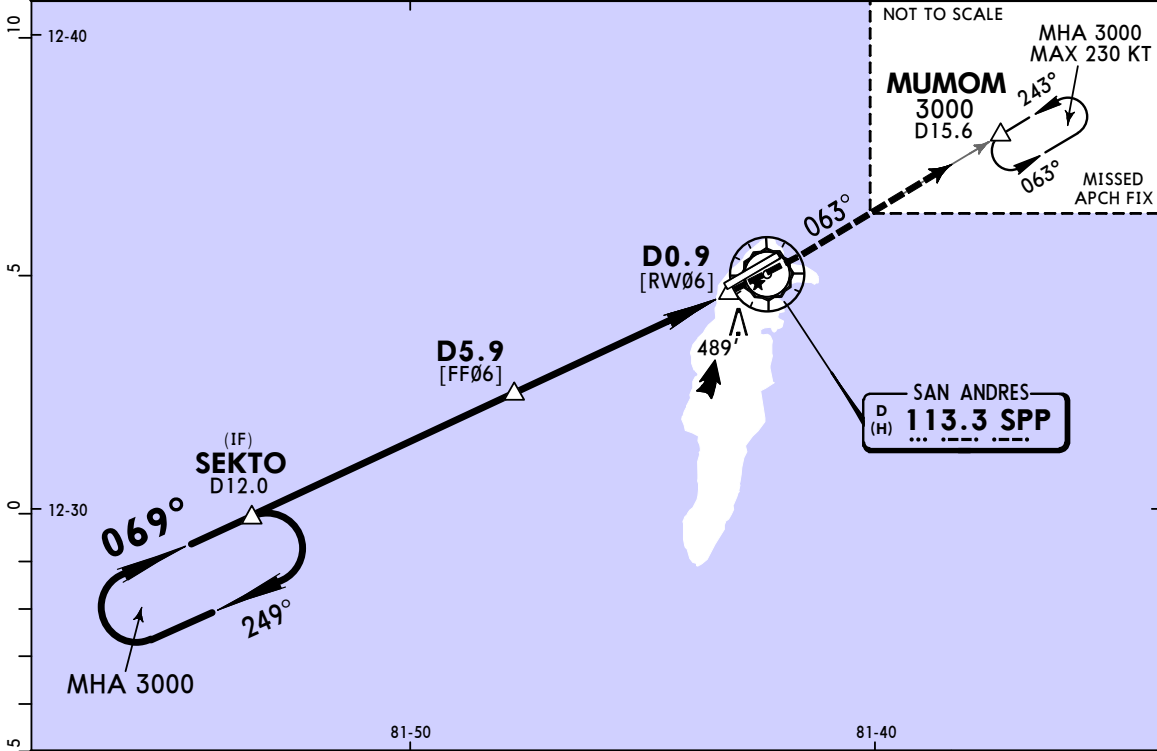
SKSP/ADZ

GUSTAVO ROJAS PINILLA

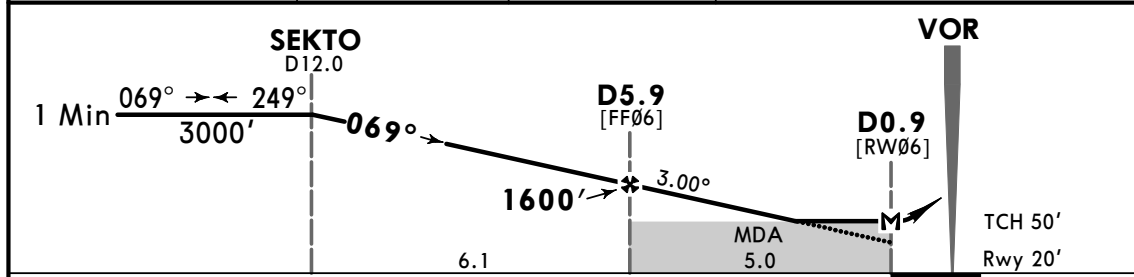
20 AUG 21 (13-1)

SAN ANDRES, COLOMBIA
VOR Z Rwy 06

ATIS 113.3		AWOS 127.8		SAN ANDRES Approach 119.3		GUSTAVO ROJAS PINILLA Tower 118.1		
VOR SPP 113.3	Final Apch Crs 069°	D5.9 1600' (1580')	MDA(H) 660' (640')	Apt Elev 20' Rwy 20'		1500 MSA SPP VOR		
MISSED APCH: Intercept and follow SPP VOR R-063 outbound to MUMOM holding pattern climbing to 3000'.								
Alt Set: IN (hPa on req)		Trans level: FL 190		Trans alt: 18000'				
SPP DME required.								



SPP DME	5.9	5.0	4.0	3.0
ALTITUDE	1600'	1310'	1000'	684'



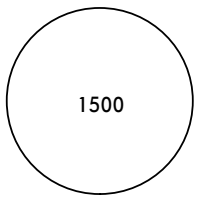
Gnd speed-Kts	70	90	100	120	140	160	PAPI	3000' on 113.3 SPP R-063	MUMOM	
Descent Angle	3.00°	372	478	531	637	743				849
MAP at D0.9 or D5.9 to MAP	5.0	4:17	3:20	3:00	2:30	2:09				1:53

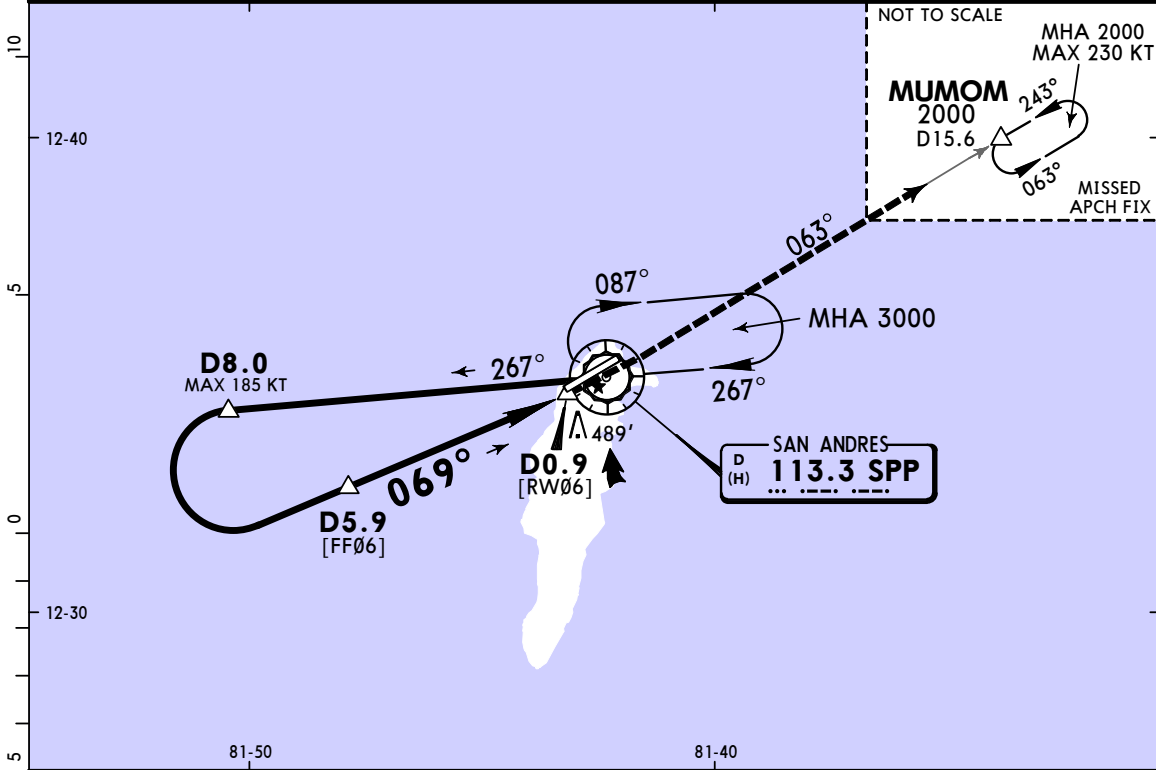
STRAIGHT-IN LANDING RWY 06				CIRCLE-TO-LAND			
MDA(H) 660' (640')				Max Kts			
A	3000m			100	790' (770') - 3600m		
B	3200m			135	890' (870') - 4000m		
C	3200m			180			
D				205			

PANS OPS

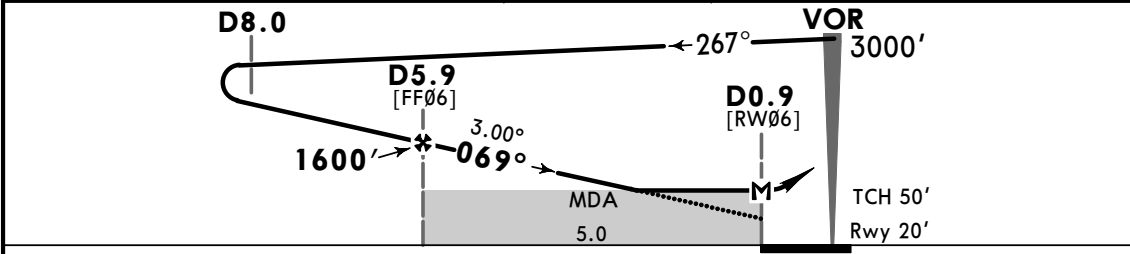
CHANGES: Chart format, straight-in minimums.

© JEPPESEN, 2000, 2021. ALL RIGHTS RESERVED.

ATIS 113.3		AWOS 127.8		SAN ANDRES Approach 119.3		GUSTAVO ROJAS PINILLA Tower 118.1			
VOR SPP 113.3	Final Apch Crs 069°	D5.9 1600' (1580')	MDA(H) 660' (640')	Apt Elev 20' Rwy 20'					
MISSED APCH: Intercept and follow SPP VOR R-063 outbound to MUMOM holding pattern climbing to 2000'.									
Alt Set: IN (hPa on req)		Trans level: FL 190		Trans alt: 18000'					
1. SPP DME required. 2. Holding at SPP VOR and MUMOM INT simultaneously at the same altitude is prohibited.									
MSA SPP VOR									



SPP DME	5.9	5.0	4.0	3.0
ALTITUDE	1600'	1310'	1000'	684'



Gnd speed-Kts	70	90	100	120	140	160	PAPI	2000'	SPP 113.3 R-063	MUMOM
Descent Angle 3.00°	372	478	531	637	743	849				
MAP at D0.9 or D5.9 to MAP	5.0	4:17	3:20	3:00	2:30	2:09				

STRAIGHT-IN LANDING RWY06				CIRCLE-TO-LAND			
MDA(H) 660' (640')				MDA(H)			
A	3000m			Max Kts	100		
B				135	790' (770') - 3600m		
C	3200m			180	890' (870') - 4000m		
D				205			

PANS OPS

SKSP/ADZ

GUSTAVO ROJAS PINILLA

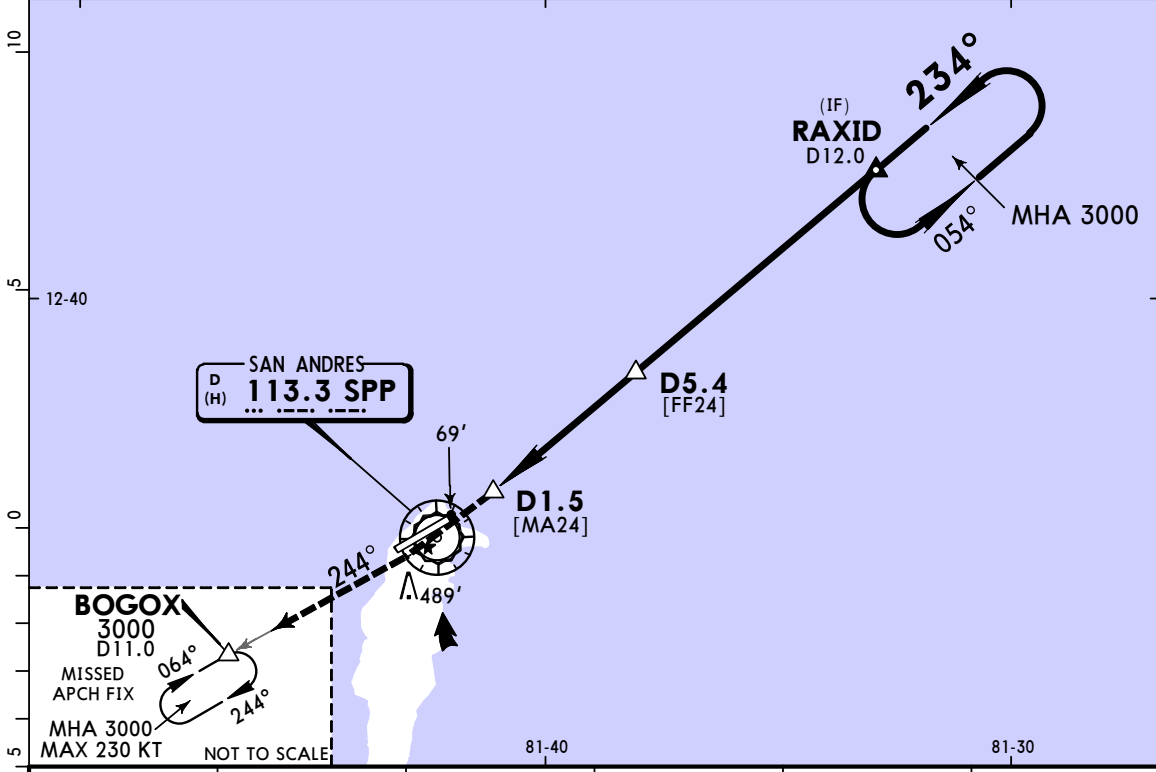
20 AUG 21 (13-3)

JEPPESSEN

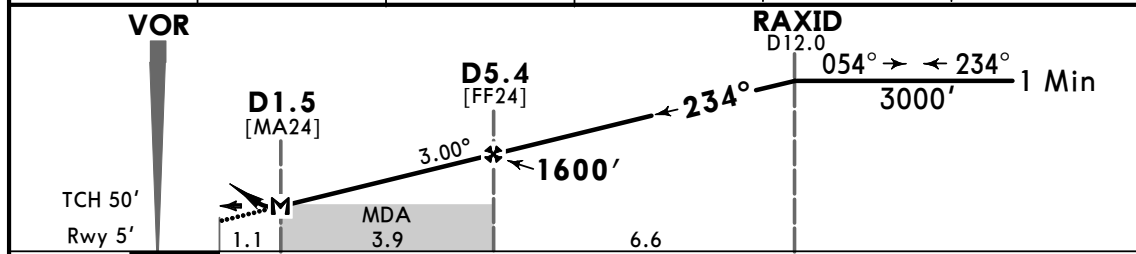
SAN ANDRES, COLOMBIA

VOR Z Rwy 24

ATIS 113.3		AWOS 127.8		SAN ANDRES Approach 119.3		GUSTAVO ROJAS PINILLA Tower 118.1		
VOR SPP 113.3	Final Apch Crs 234°	D5.4 1600' (1595')	MDA(H) 440' (435')	Apt Elev 20' Rwy 5'		1500 MSA SPP VOR		
MISSED APCH: Intercept and follow SPP VOR R-244 outbound to BOGOX holding pattern climbing to 3000'.								
Alt Set: IN (hPa on req)		Trans level: FL 190		Trans alt: 18000'				
SPP DME required.								



SPP DME	2.0	3.0	4.0	5.0	5.4
ALTITUDE	580'	896'	1212'	1529'	1600'



Gnd speed-Kts	70	90	100	120	140	160	PAPI-R	3000'	SPP 113.3 R-244	BOGOX	
Descent Angle	3.00°	372	478	531	637	743					849
MAP at D1.5 or D5.4 to MAP	3.9	3:21	2:36	2:20	1:57	1:40					1:28

STRAIGHT-IN LANDING RWY 24				CIRCLE-TO-LAND			
MDA(H) 440' (435')				MDA(H) _____			
A	2100m			Max Kts	790' (770') - 3600m		
B				100			
C	2300m			135			
D				180	890' (870') - 4000m		
				205			

PANS OPS

CHANGES: Chart format, straight-in minimums, visual segment surface added.

© JEPPESSEN, 1999, 2021. ALL RIGHTS RESERVED.

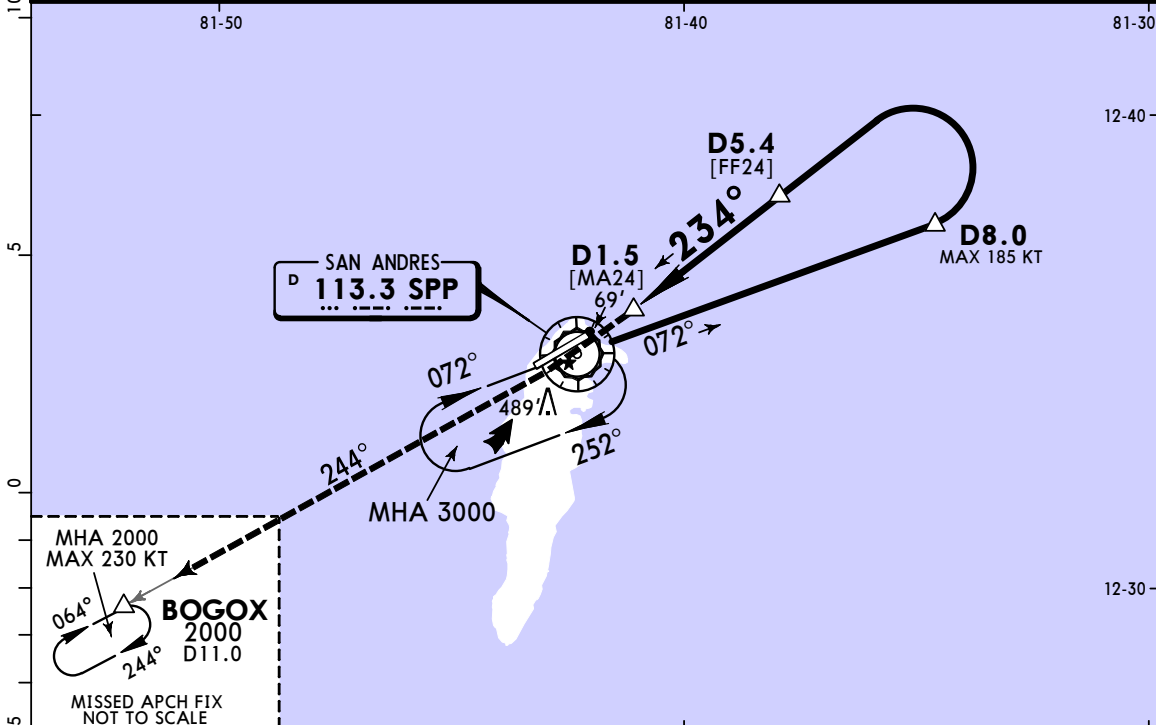
SKSP/ADZ

GUSTAVO ROJAS PINILLA

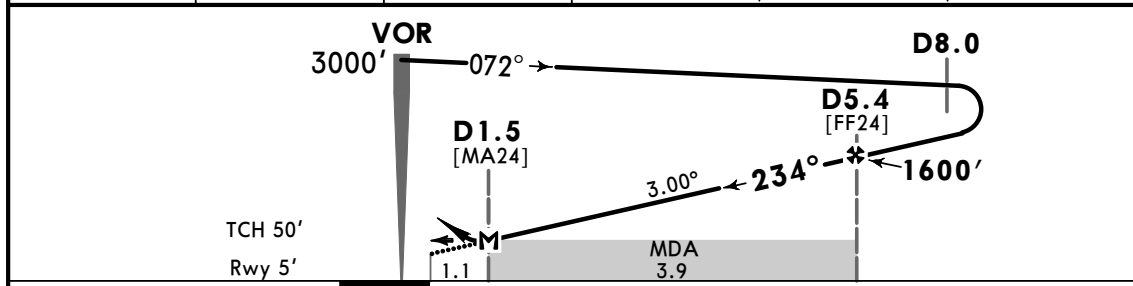
JEPPESEN 20 AUG 21 (13-4)

SAN ANDRES, COLOMBIA
VOR Y Rwy 24

ATIS 113.3		AWOS 127.8		SAN ANDRES Approach 119.3		GUSTAVO ROJAS PINILLA Tower 118.1	
VOR SPP 113.3	Final Apch Crs 234°	D5.4 1600' (1595')		MDA(H) 440' (435')	Apt Elev 20' Rwy 5'		
MISSED APCH: Intercept and follow SPP VOR R-244 outbound to BOGOX holding pattern climbing to 2000'.							
Alt Set: IN (hPa on req)		Trans level: FL 190		Trans alt: 18000'			
1. SPP DME required. 2. Holding at SPP VOR and BOGOX INT simultaneously at the same altitude is prohibited.							



SPP DME	2.0	3.0	4.0	5.0	5.4
ALTITUDE	580'	896'	1212'	1529'	1600'



Gnd speed-Kts	70	90	100	120	140	160	PAPI-R	2000'	SPP 113.3 R-244	BOGOX
Descent Angle 3.00°	372	478	531	637	743	849				
MAP at D1.5 or D5.4 to MAP	3.9	3:21	2:36	2:20	1:57	1:40				

STRAIGHT-IN LANDING RWY 24					CIRCLE-TO-LAND				
MDA(H) 440' (435')					MDA(H) _____				
A					Max Kts				
B	2100m				100	790' (770') - 3600m			
C					135				
D	2300m				180	890' (870') - 4000m			
					205				