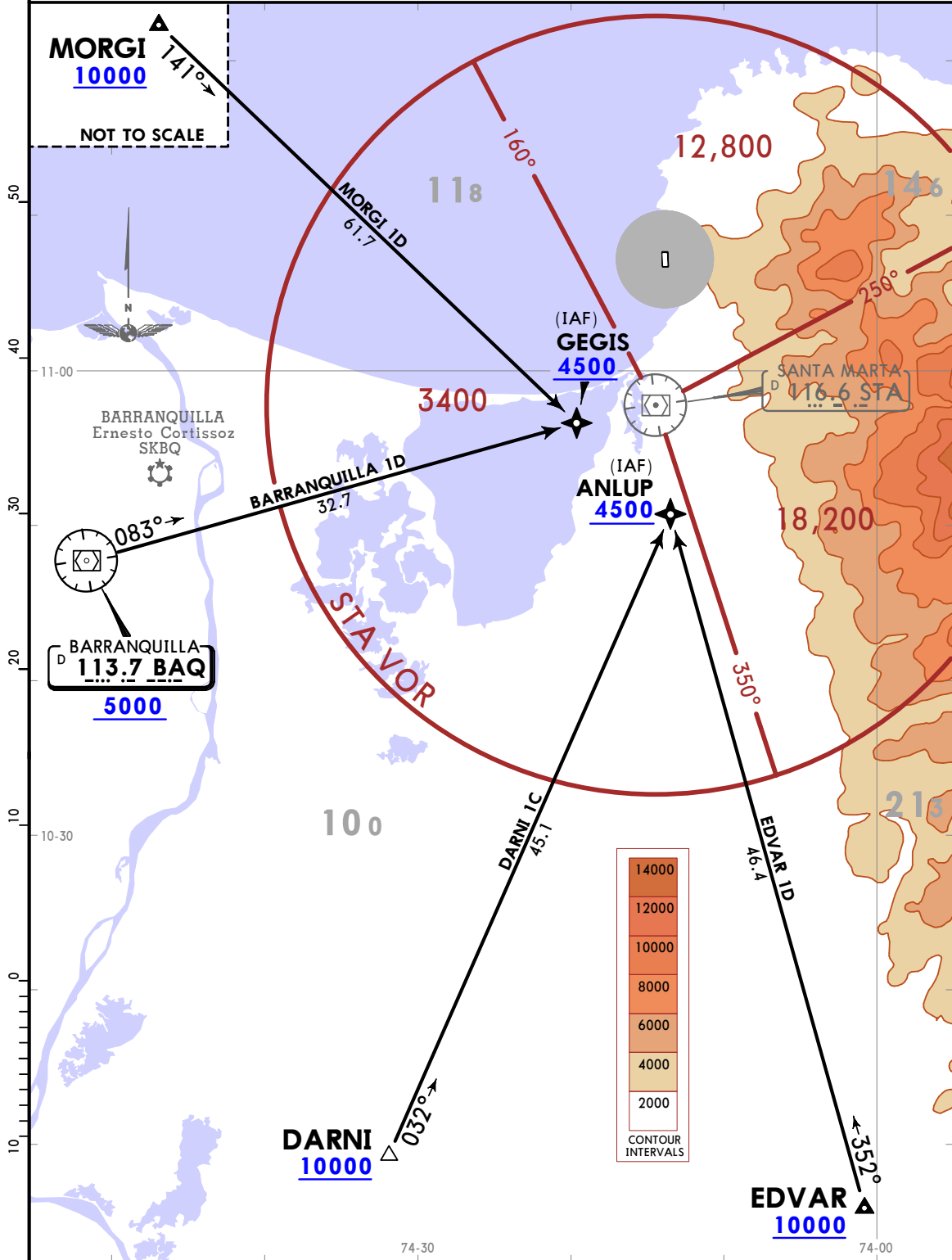


*AWOS 127.7	Apt Elev 22	Alt set: IN (hPa on req) Trans level: FL190 RNAV 1 certification required.
----------------	----------------	---

**BARRANQUILLA 1D [BAQ1D], DARNI 1C [DARN1C]
EDVAR 1D [EDVA1D], MORG1 1D [MORG1D]
RNAV (GNSS) ARRIVALS
(RWY 01)**

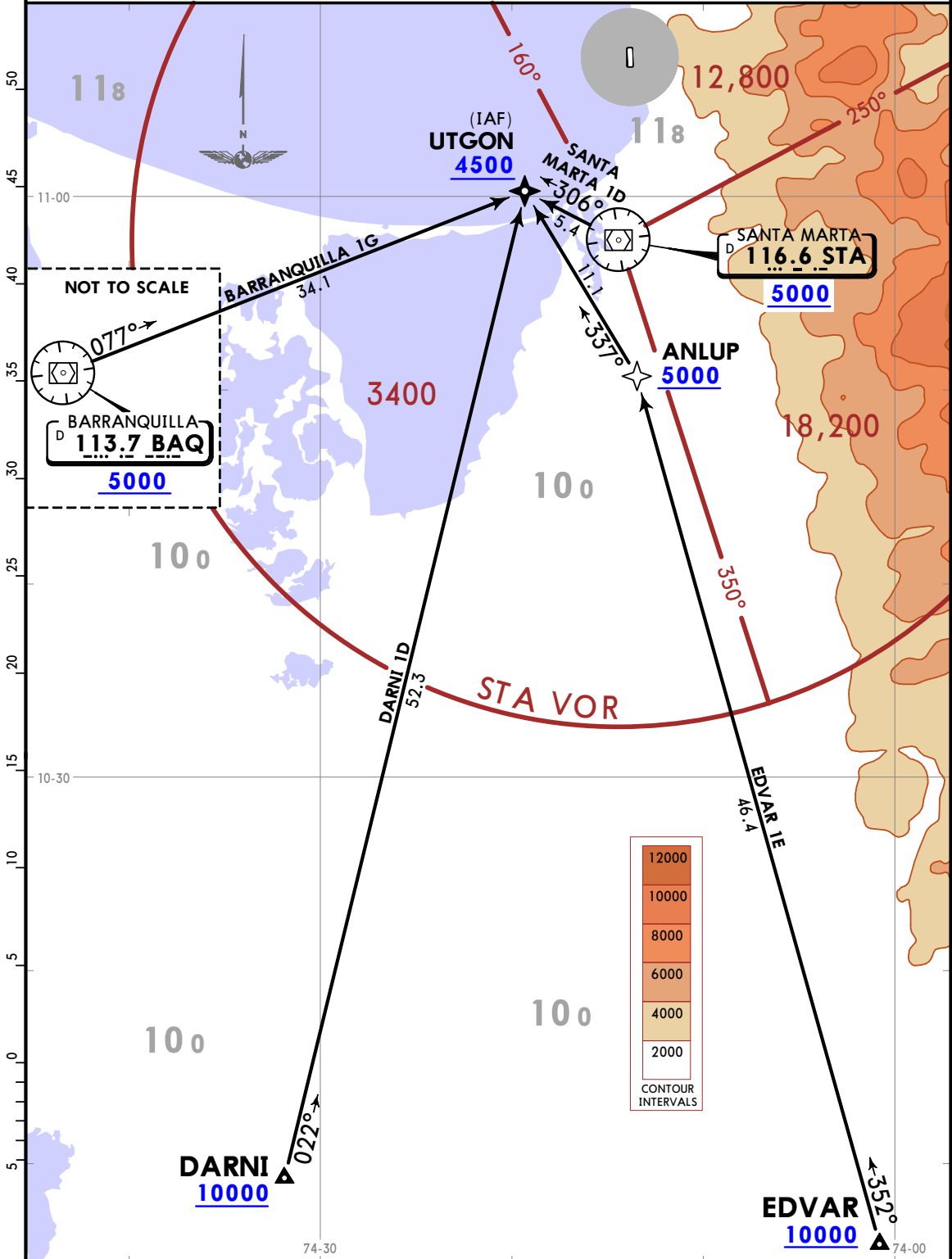
CAT A, B & C



*AWOS 127.7	Apt Elev 22	Alt set: IN (hPa on req) Trans level: FL190 RNAV 1 required.
-----------------------	-----------------------	---

**BARRANQUILLA 1G [BAQ1G], DARNI 1D [DARN1D]
EDVAR 1E [EDVA1E], SANTA MARTA 1D [STA1D]
RNAV (GNSS) ARRIVALS
(RWY 19)**

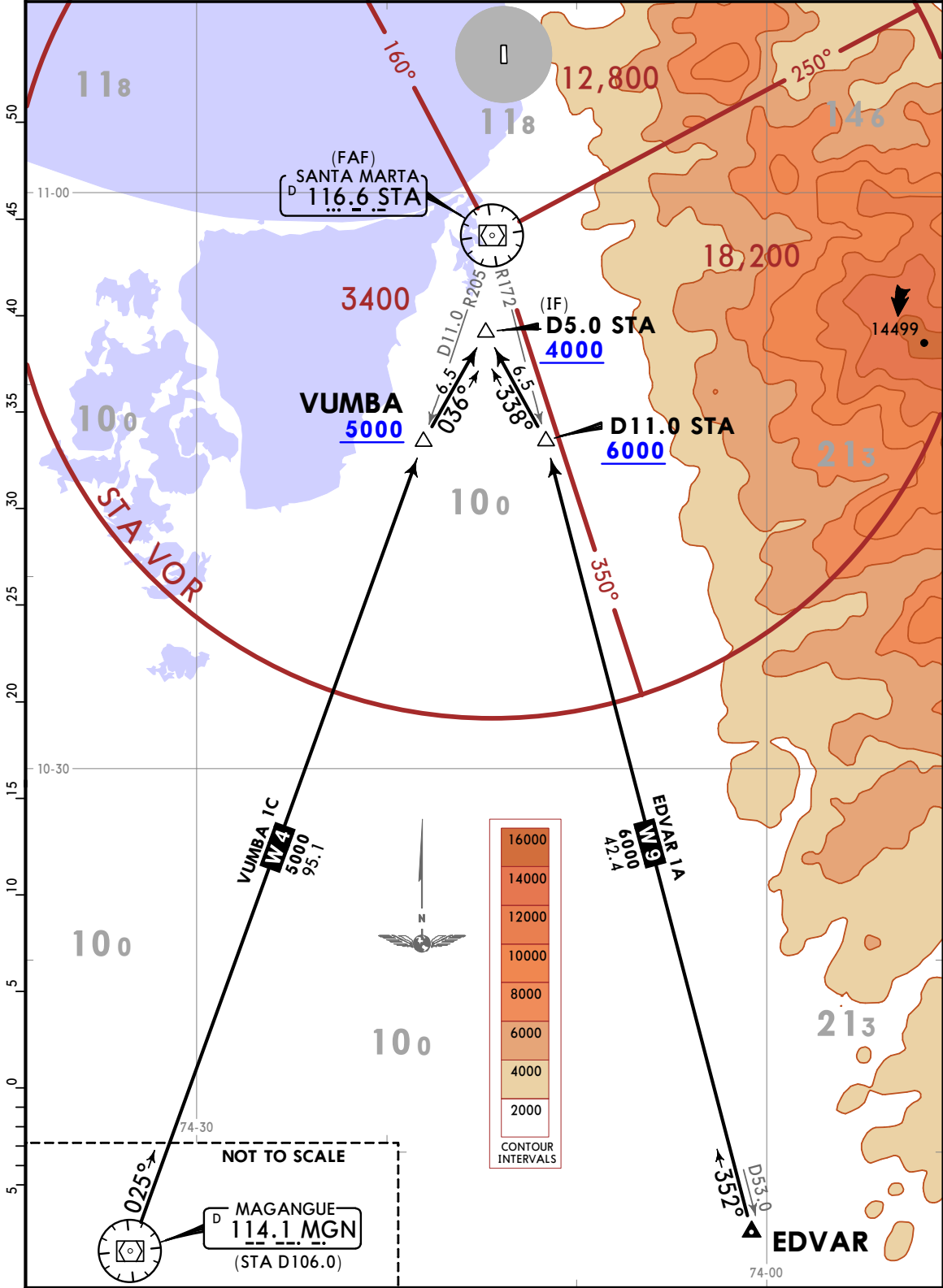
CAT A, B & C



*AWOS 127.7	Apt Elev 22	Alt set: IN (hPa on req) Trans level: FL190 STA DME required.
----------------	----------------	--

EDVAR 1A [EDVA1A], VUMBA 1C [VUMB1C]
ARRIVALS
(ALL RWYS)

CAT A, B & C

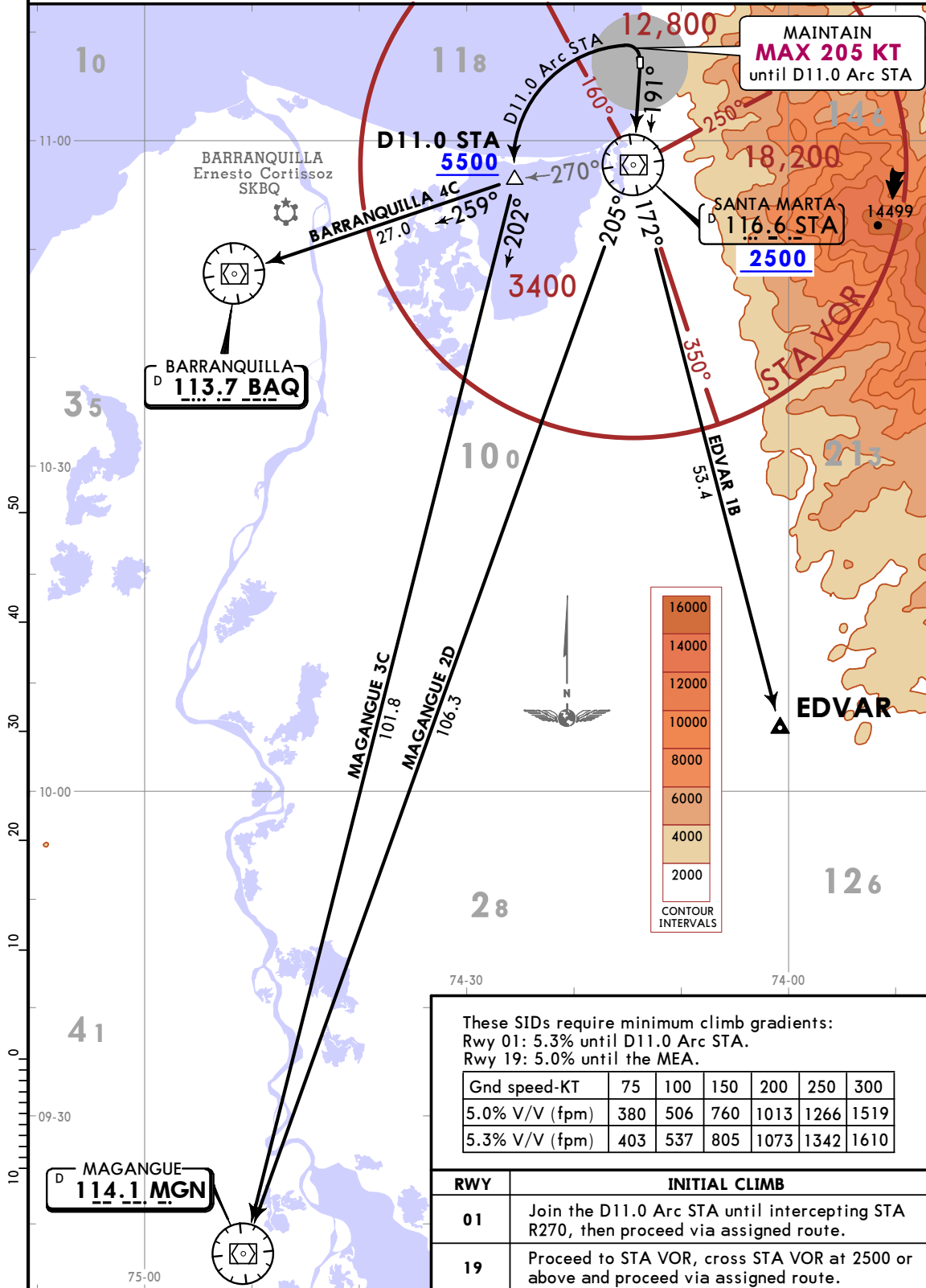


Apt Elev
22

Trans alt: 18000
STA DME required.

**BARRANQUILLA 4C [BAQ4C], EDVAR 1B [EDVA1B]
MAGANGUE 3C [MGN3C], MAGANGUE 2D [MGN2D]
DEPARTURES (ALL RWYS)**

CAT A, B & C



These SIDs require minimum climb gradients:
Rwy 01: 5.3% until D11.0 Arc STA.
Rwy 19: 5.0% until the MEA.

Gnd speed-KT	75	100	150	200	250	300
5.0% V/V (fpm)	380	506	760	1013	1266	1519
5.3% V/V (fpm)	403	537	805	1073	1342	1610

RWY	INITIAL CLIMB
01	Join the D11.0 Arc STA until intercepting STA R270, then proceed via assigned route.
19	Proceed to STA VOR, cross STA VOR at 2500 or above and proceed via assigned route.

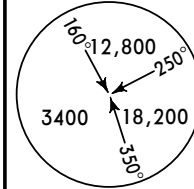
Apt Elev
22

Trans alt: 18000
1. GNSS required. 2. RNP 1 or RNAV 1.

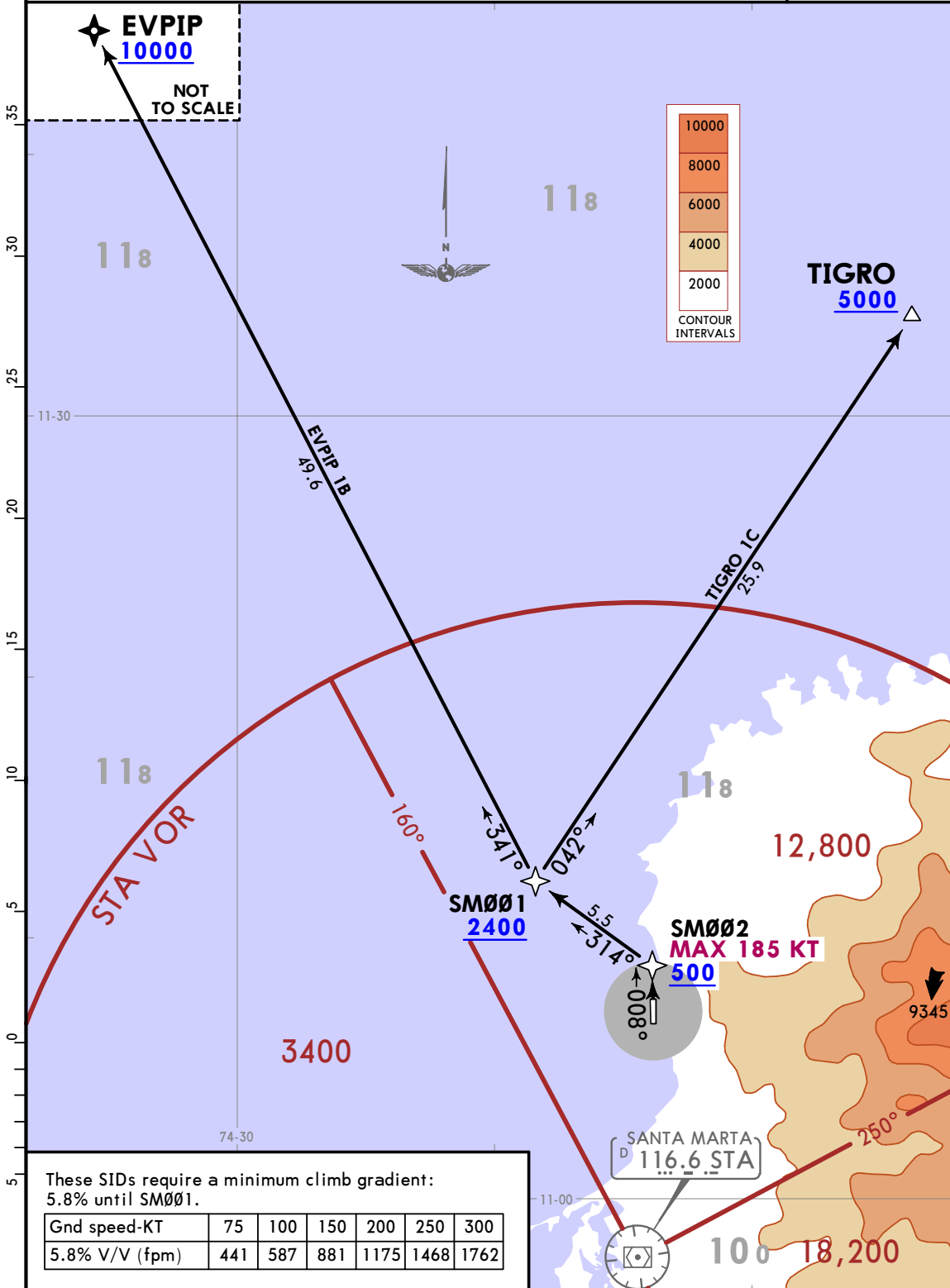
EVPIP 1B [EVPI1B], TIGRO 1C [TIGR1C]
RNAV (GNSS) DEPARTURES
(RWY 01)

SPEED: MAX 185 KT UNTIL TURN COMPLETE AT SM002

CAT A, B, C & D



MSA STA VOR



These SIDs require a minimum climb gradient:
5.8% until SM001.

Gnd speed-KT	75	100	150	200	250	300
5.8% V/V (fpm)	441	587	881	1175	1468	1762

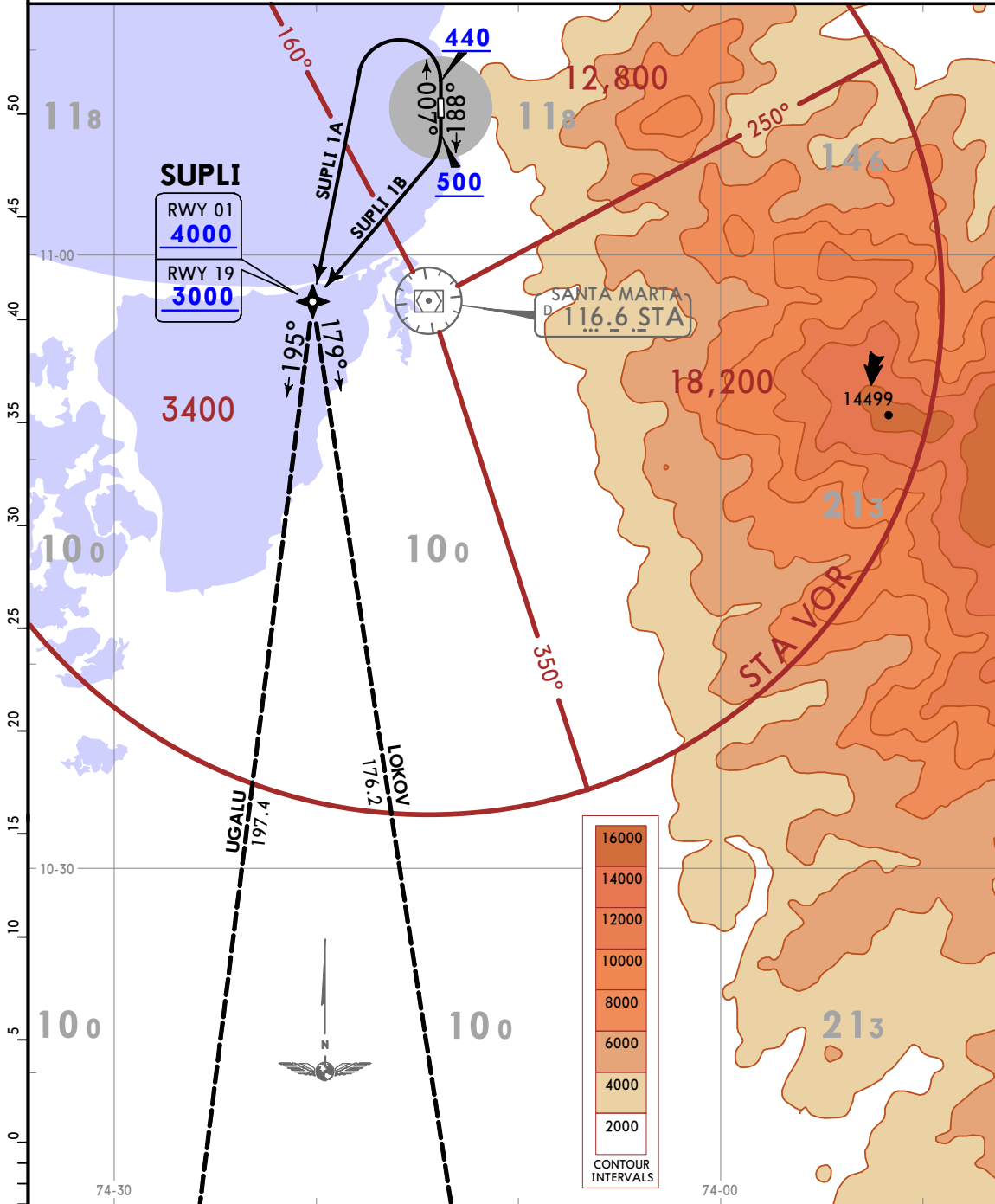
Apt Elev
22

Trans alt: 18000
1. GNSS required. 2. RNP 1 or RNAV 1.

SUPLI 1A [SUPL1A], SUPLI 1B [SUPL1B]
RNAV (GNSS) DEPARTURES
(ALL RWYS)

SPEED: MAX 185 KT UNTIL TURN COMPLETE

CAT A, B, C & D



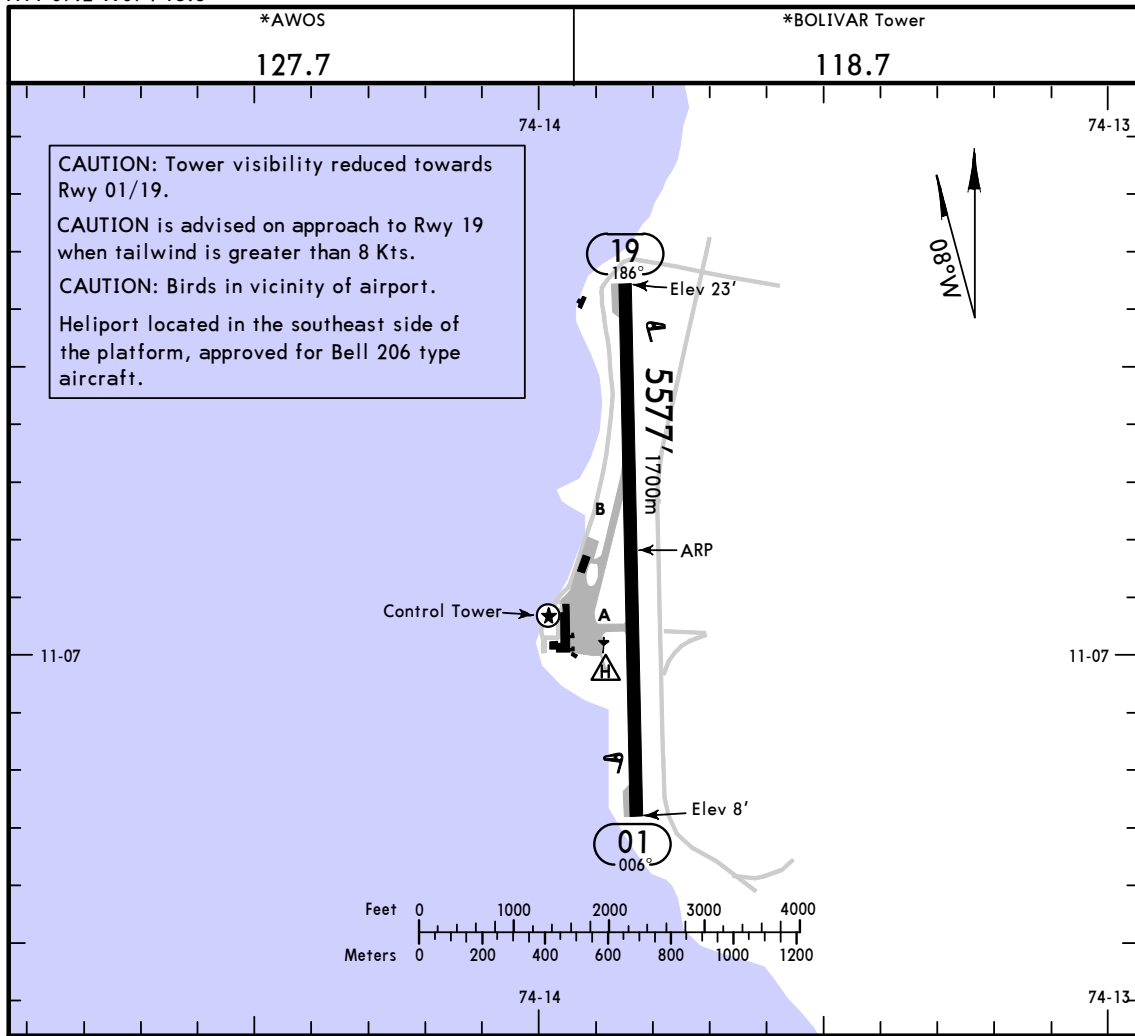
NOT TO SCALE

UGALU
10000

LOKOV
10000

These SIDs require a minimum climb gradient:
Rwy 01: 5.5% until turn complete.
Rwy 19: 5.5% until 2000.

Gnd speed-KT	75	100	150	200	250	300
5.5% V/V (fpm)	418	557	835	1114	1392	1671



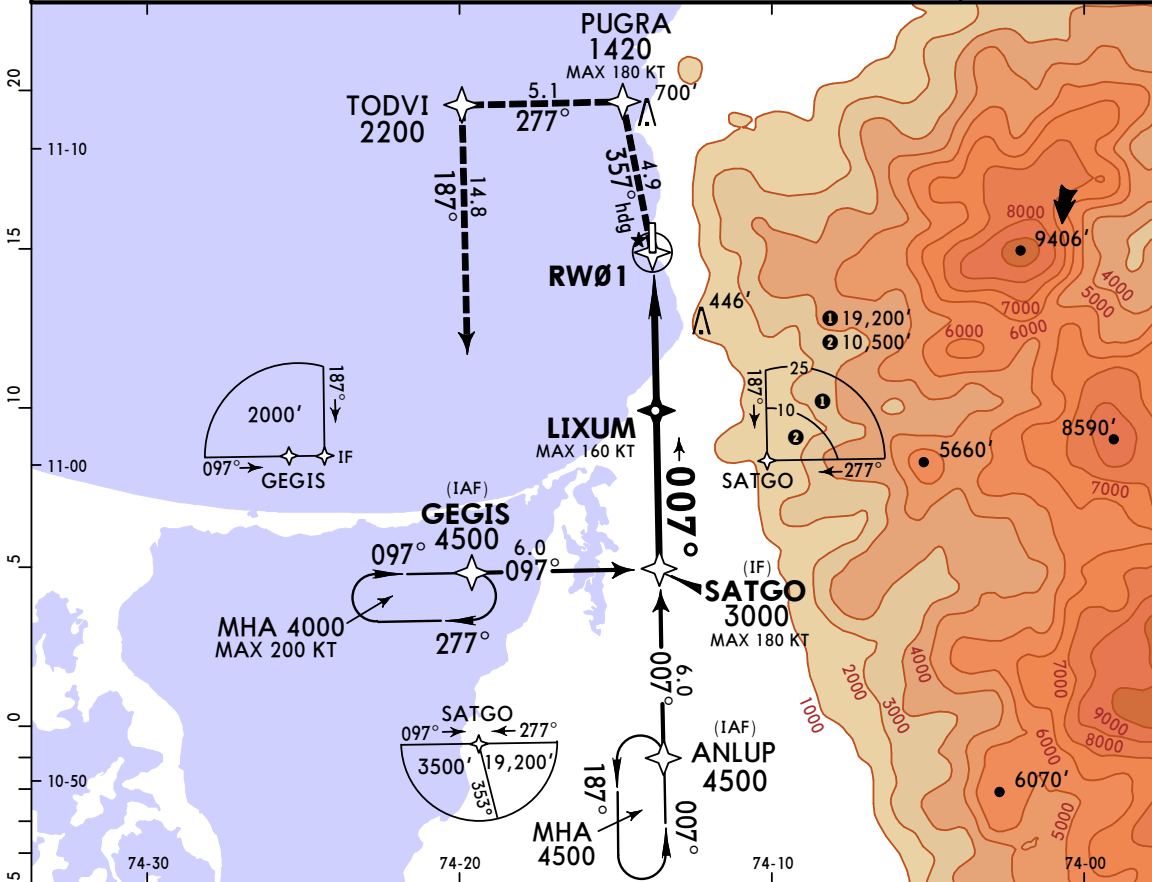
ADDITIONAL RUNWAY INFORMATION

RWY		USABLE LENGTHS				WIDTH
		Threshold	Landing Beyond Glide Slope	TAKE-OFF		
01	HIRL PAPI-L (angle 3.0°)				131'	
19	HIRL PAPI-L (angle 3.0°)				40m	

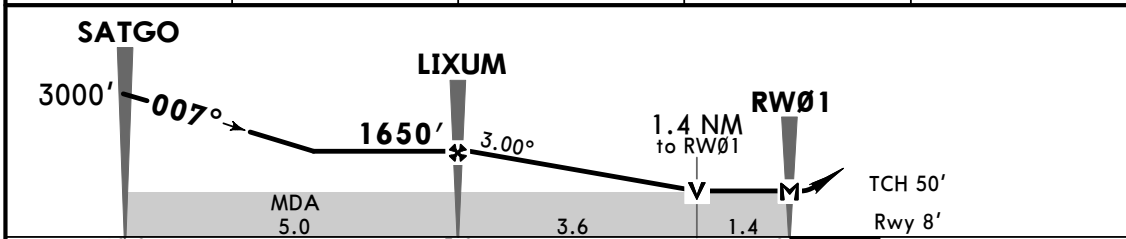
TAKE-OFF		
All Rwys		
1 Take-off Alternate Airport Field RL & CL or RCLM		STD
1 Eng	1000'- 2500m	
2 Eng	1 hour alternate (1 Eng inop) 500m	1600m
3 & 4 Eng	2 hour alternate (1 Eng inop) 500m	800m

1 With appropriate approval.

*AWOS 127.7		BARRANQUILLA NORTH Approach 119.1			*BOLIVAR Tower 118.7
RNAV	Final Apch Crs 007°	LIXUM 1650' (1642')	LNAV MDA(H) 510' (502')	Apt Elev 22' Rwy 8'	TAA 25 NM GEGIS, SATGO
MISSED APCH: Climb heading 357° to PUGRA. Turn LEFT to TODVI and turn LEFT to GEGIS holding at 4000'. Missed apch climb gradient mim 3.8%.					
Alt Set: IN (hPa on req)		Trans level: FL 190		Trans alt: 18000'	
1. Certification RNP APCH required.		2. No holding simultaneously at the same level.			



Dist to THR	5.0	4.0	3.0	2.0
ALTITUDE	1650'	1332'	1013'	695'



Gnd speed-Kts	70	90	100	120	140	160	PAPI-L	4000'	on	357°	PUGRA	
Descent Angle	3.00°	372	478	531	637	743						849
MAP at RW01	5.0	4:17	3:20	3:00	2:30	2:09						1:53

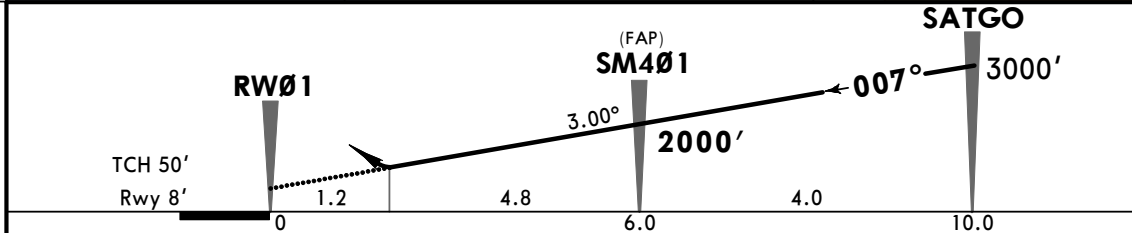
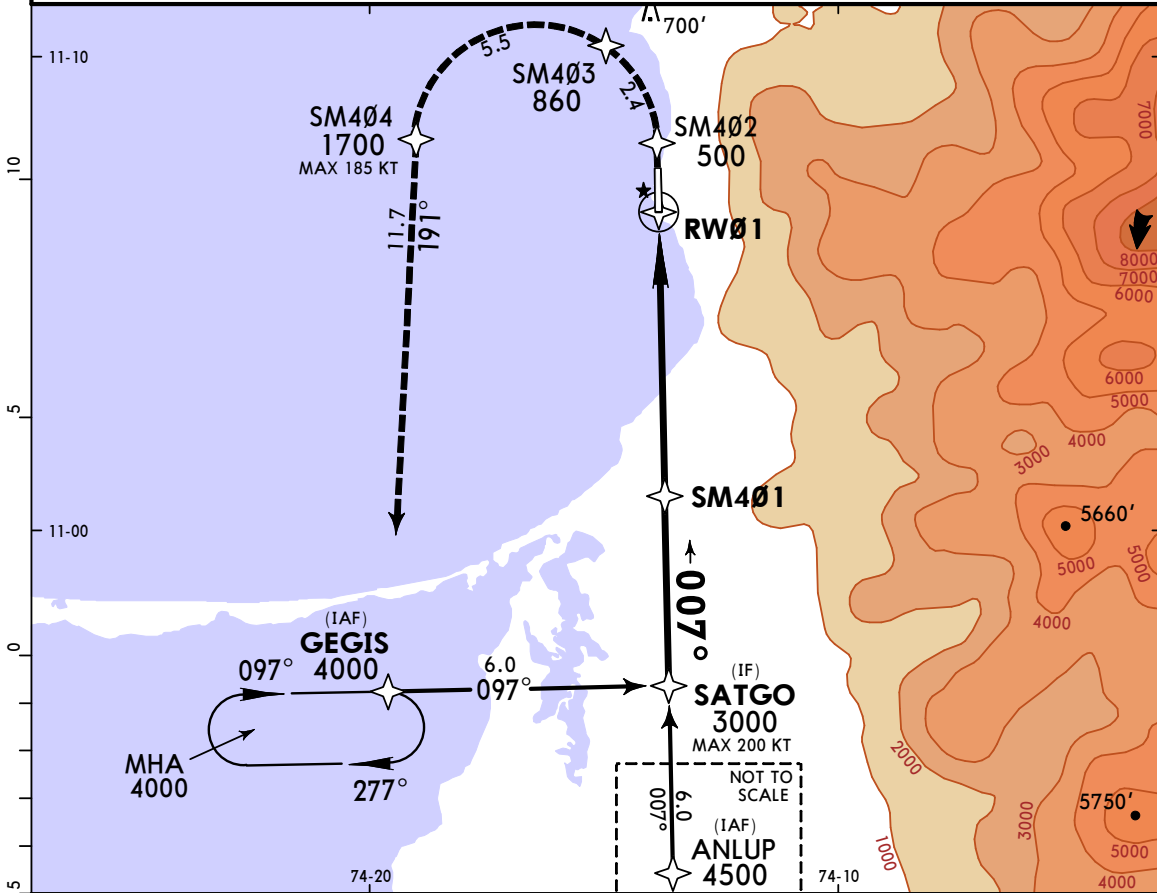
STRAIGHT-IN LANDING RWY 01 Missed Apch Climb Gradient Mim 3.8% LNAV MDA(H) 510' (502')				CIRCLE-TO-LAND Missed Apch Climb Gradient Mim 3.8% Not Authorized East of Airport			
A	2500m			Max Kts	MDA(H)		
B	2700m			100	1410' (1388') - 5000m		
C	NOT APPLICABLE			135			
D	NOT APPLICABLE			180	NOT APPLICABLE		

*AWOS 127.7		BARRANQUILLA NORTH Approach 119.1		*BOLIVAR Tower 118.7	
RNAV	Final Apch Crs 007°	SM401 2000' (1992')	RNP 0.30 DA(H) 450' (442')	Apt Elev 22' Rwy 8'	

BRIEFING STRIP™
MISSED APCH: Climb on heading 007° to SM402, then make LEFT turn until SM404, then heading 191° to GEGIS holding pattern, climbing to 4000'.
 Missed Apch RNP 0.40 to SM403, afterwards RNP 1.0.

Alt Set: IN (hPa on req) Trans level: FL 190 Trans alt: 18000'

1. Authorization Required. 2. RF required. 3. Procedure not authorized when altimeter setting is not available. 4. Procedure is not authorized at night when VGSI is inoperative. 5. For uncompensated Baro-VNAV, procedure not authorized below 6°C or above 40°C. 6. Transition to the missed approach RNP for lateral guidance, should not be initiated prior the parallel position to the DA(H) track.



Gnd speed-Kts	70	90	100	120	140	160	PAPI-L	4000'	on	007°	hdg	SM402
Glide Path Angle	3.00°	372	478	531	637	743						
MAP at DA												

STRAIGHT-IN LANDING RWY 01
 RNP 0.30
 DA(H) 450' (442')

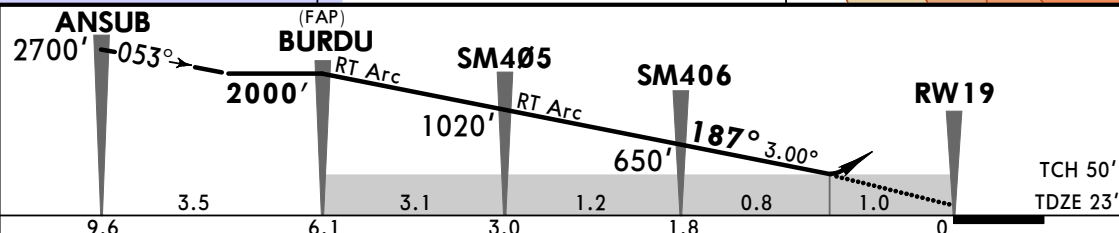
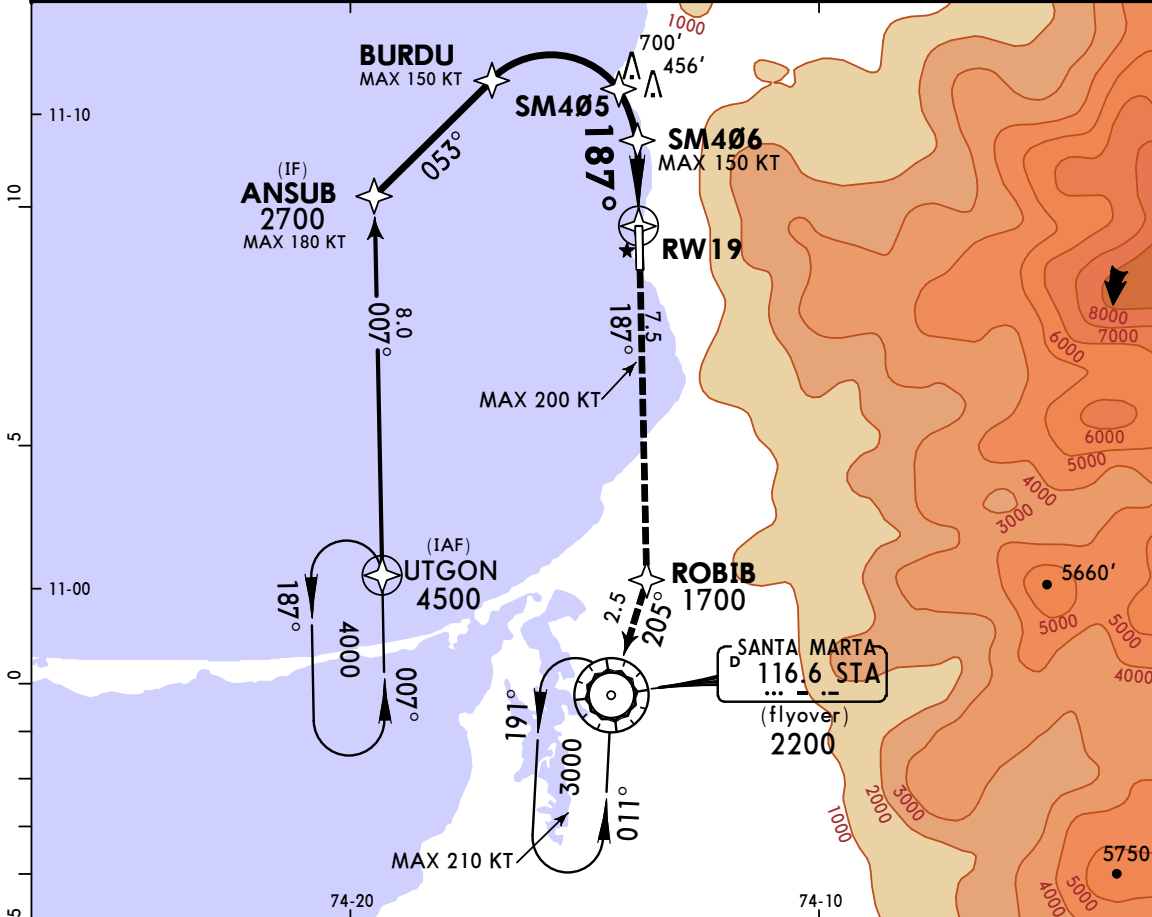
A	
B	2100m
C	
D	NOT APPLICABLE

*AWOS 127.7		BARRANQUILLA NORTH Approach 119.1		*BOLIVAR Tower 118.7	
RNAV	Final Apch Crs 187°	BURDU 2000' (1977')	RNP 0.10 DA(H) 360' (337')	Apt Elev 22' TDZE 23'	

MISSED APCH: Climb on track 187° to ROBIB, then turn RIGHT to STA VOR holding pattern climbing to 3000'. Cross ROBIB at 1700' or above.

Alt Set: IN (hPa on req) Trans level: FL 190 Trans alt: 18000'

1. Authorization Required.
2. RF (Radius Arc to Fix) and GNSS required.
3. When local altimeter setting is not received, procedure not authorized.
4. When VGSI is inoperative, procedure not authorized at night.
5. For uncompensated Baro-VNAV, procedure not authorized below 6°C or above 40°C.
6. Do not use UTGON and STA VOR holding simultaneously at the same level.

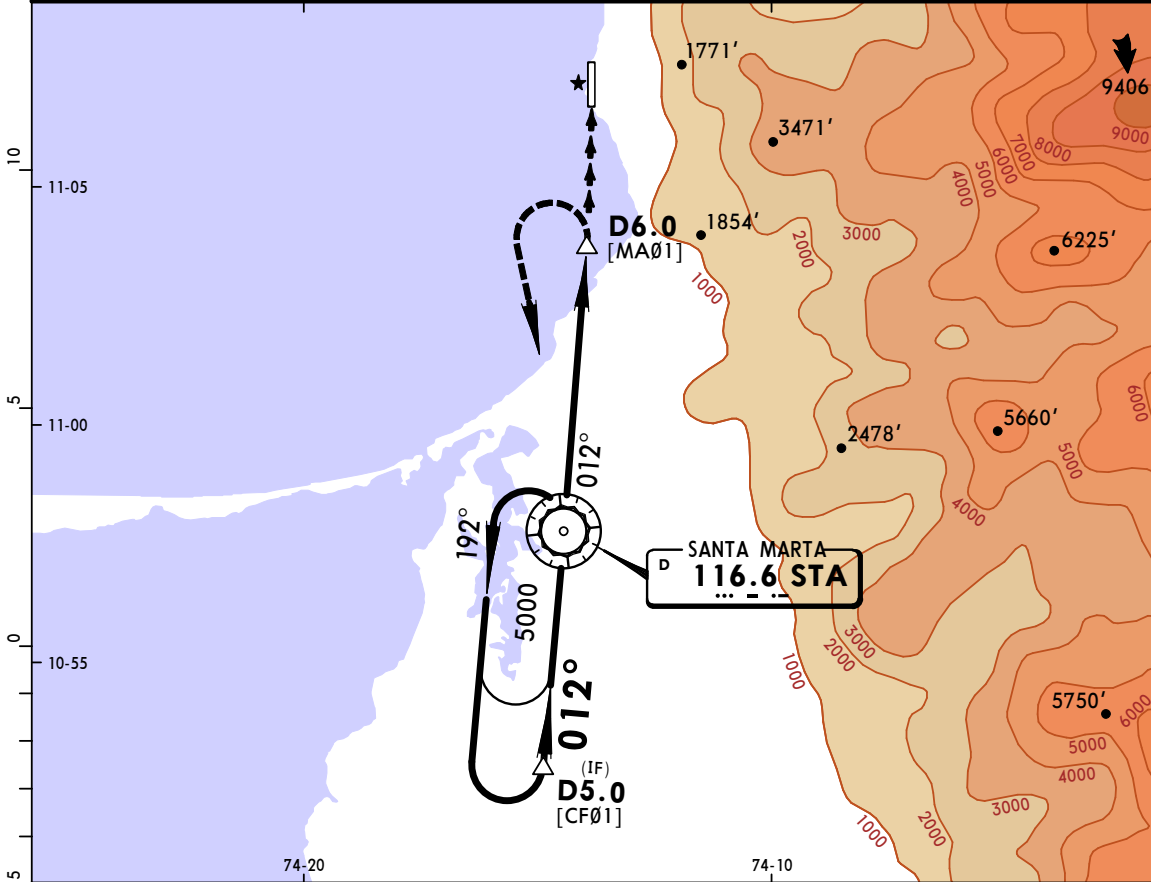
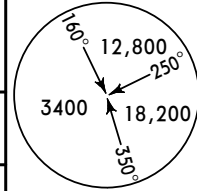


Gnd speed-Kts	70	90	100	120	140	160	PAPI-L	1700'	187°	on TRACK	ROBIB
Glide Path Angle 3.00°	372	478	531	637	743	849					
MAP at DA											

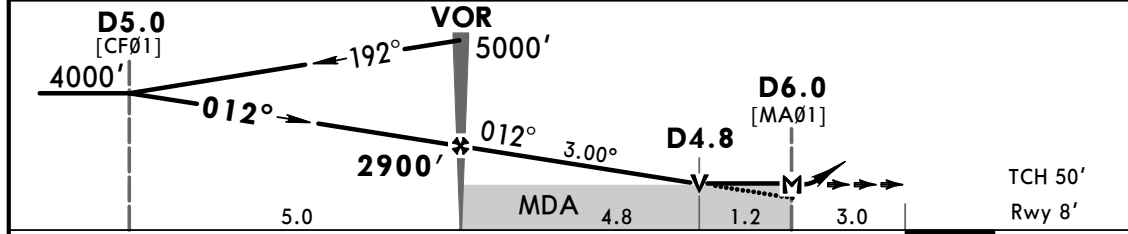
STRAIGHT-IN LANDING RWY 19	
RNP 0.10 DA(H) 360' (337')	RNP 0.30 DA(H) 420' (397')

A		
B	1500m	1800m
C		
D	NOT APPLICABLE	

*AWOS 127.7		BARRANQUILLA NORTH Approach 119.1		*BOLIVAR Tower 118.7	
VOR STA 116.6	Final Apch Crs 012°	VOR 2900' (2892')	MDA(H) 1410' (1402')	Apt Elev 22' Rwy 8'	
MISSED APCH: Climbing LEFT turn to STA VOR and hold at 5000'.					
Alt Set: IN (hPa on req)		Trans level: FL 190		Trans alt: 18000'	
STA DME required.				MSA STA VOR	



STA DME	1.0	2.0	3.0	4.0
ALTITUDE	2584'	2268'	1952'	1636'



Gnd speed-Kts	70	90	100	120	140	160	PAPI-L	LT	STA 116.6
Descent Angle 3.00°	372	478	531	637	743	849			
MAP at D6.0									
VOR to MAP	6.0	5:09	4:00	3:36	3:00	2:34	2:15		

STRAIGHT-IN LANDING RWY 01		CIRCLE-TO-LAND	
MDA(H) 1410' (1402')		Not Authorized East of Airport	
A	5000m	Max Kts	1410' (1388') -5000m
B		100	
C		135	
D	180	D	NOT APPLICABLE