

SKSJ/SJE
JORGE E. GONZALEZ

JEPPESSEN
20 AUG 21 (10-2)

SAN JOSE DEL GUAVIARE,
COLOMBIA

STAR

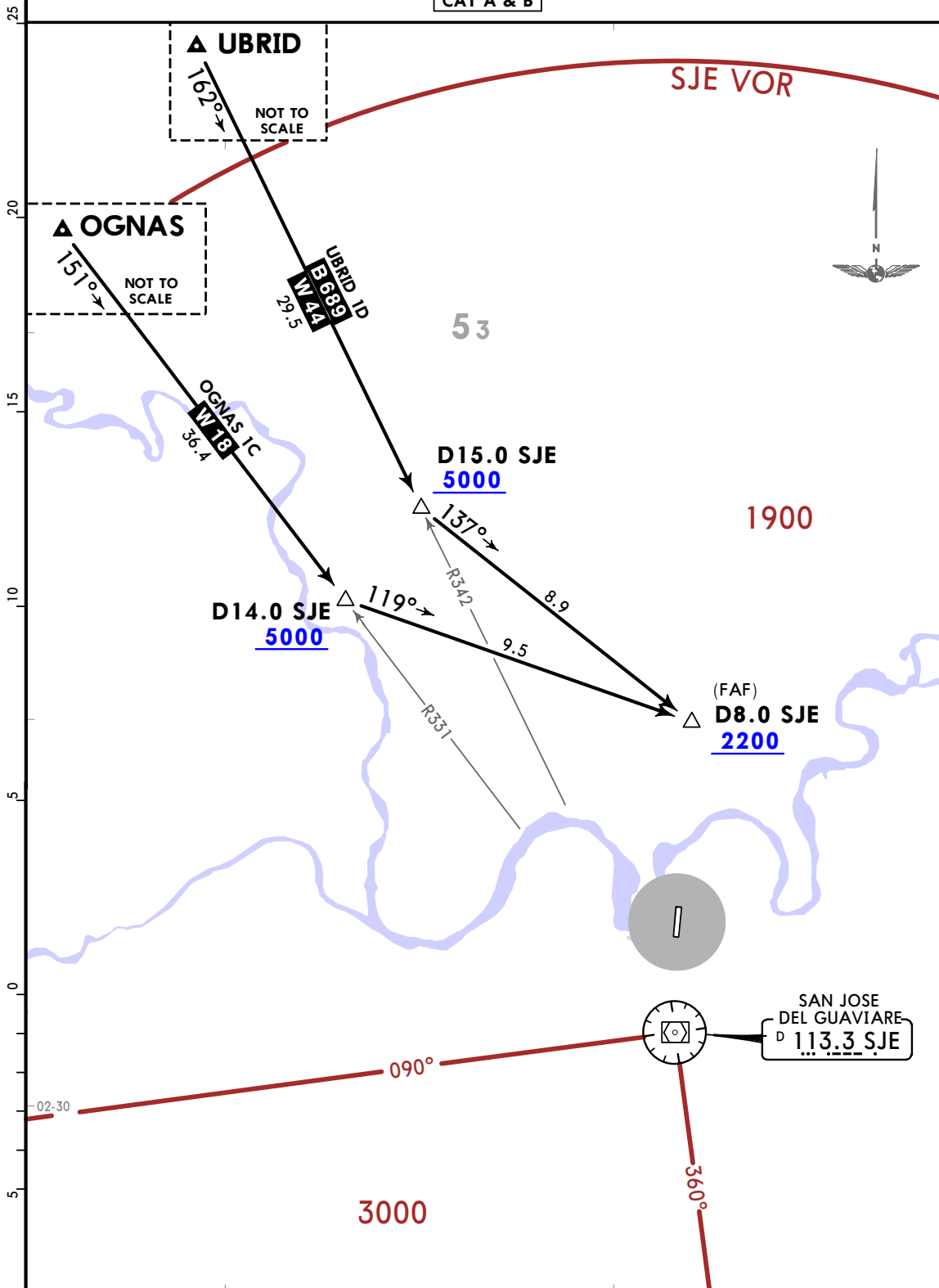
Apt Elev
613

Alt Set: IN (hPa on req)
Trans level: FL190

OGNAS 1C [OGNA1C], UBRID 1D [UBRI1D]

ARRIVALS
(RWY 19)

CAT A & B



CHANGES: New format.

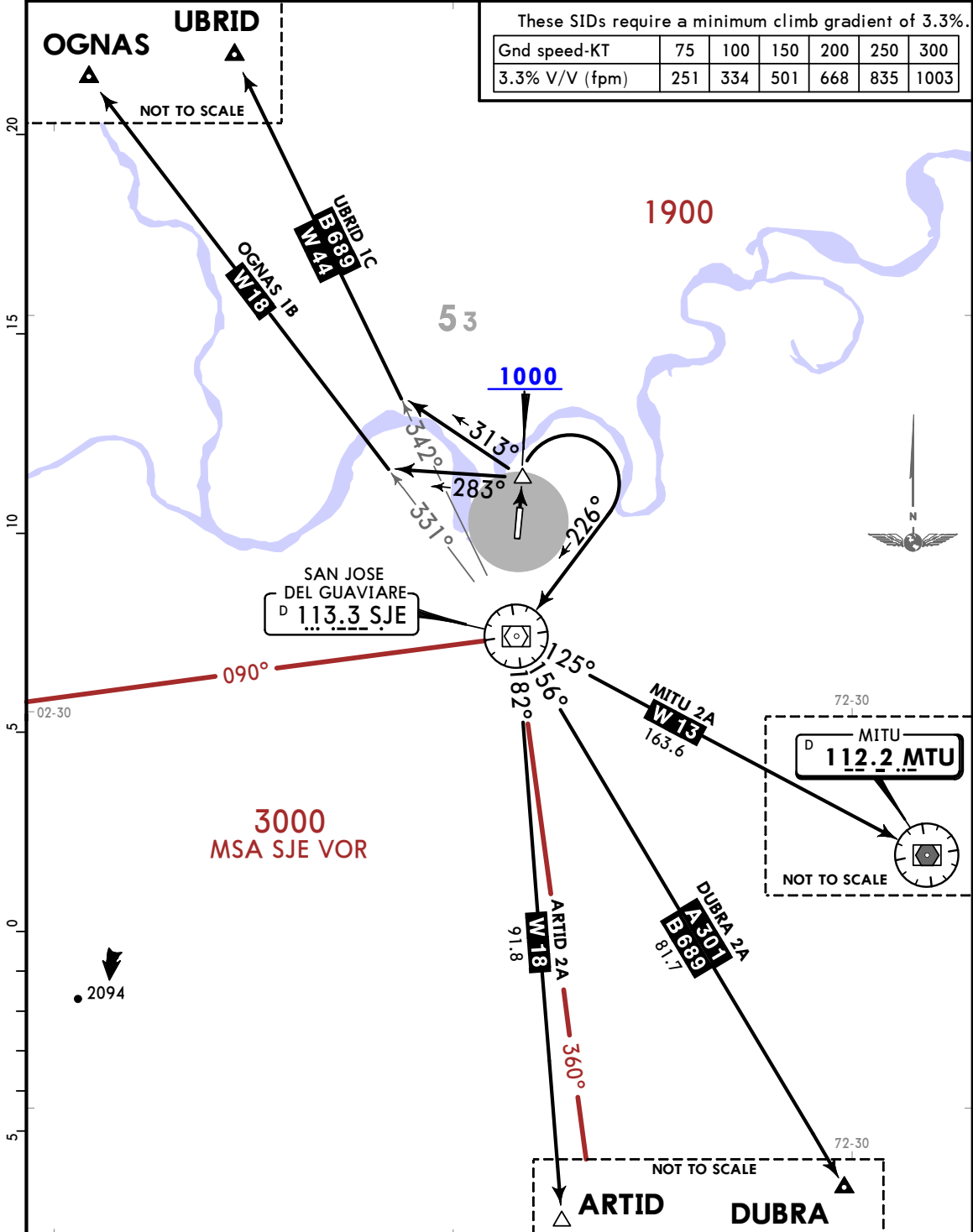
© JEPPESSEN, 2021. ALL RIGHTS RESERVED.

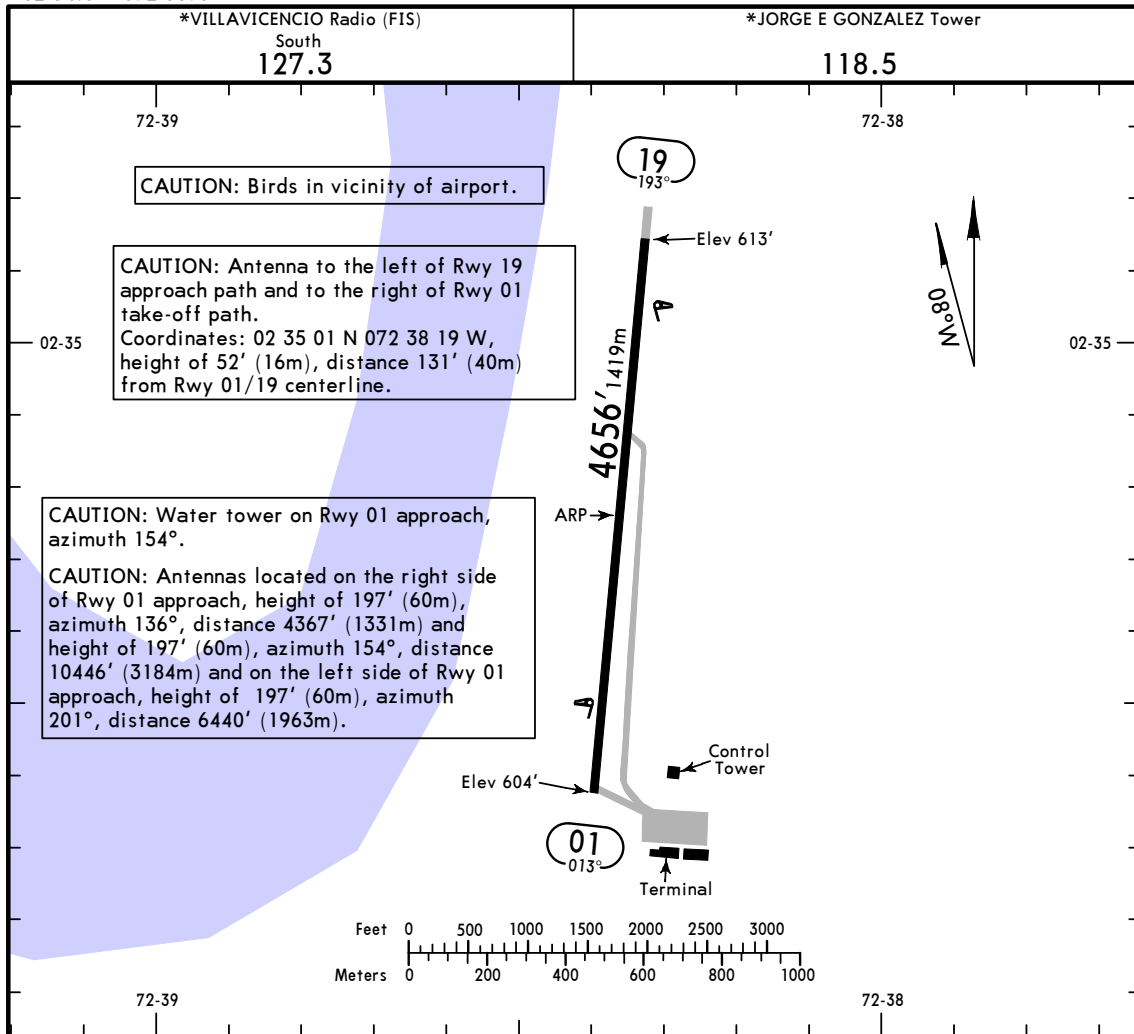
Apt Elev 613 Trans alt: 18000

ARTID 2A [ARTI2A], DUBRA 2A [DUBR2A]
 MITU 2A [MTU2A], OGNAS 1B [OGNA1B]
 UBRID 1C [UBRI1C]
DEPARTURES
 (RWY 01)
 CAT A & B

These SIDs require a minimum climb gradient of 3.3%.

Gnd speed-KT	75	100	150	200	250	300
3.3% V/V (fpm)	251	334	501	668	835	1003



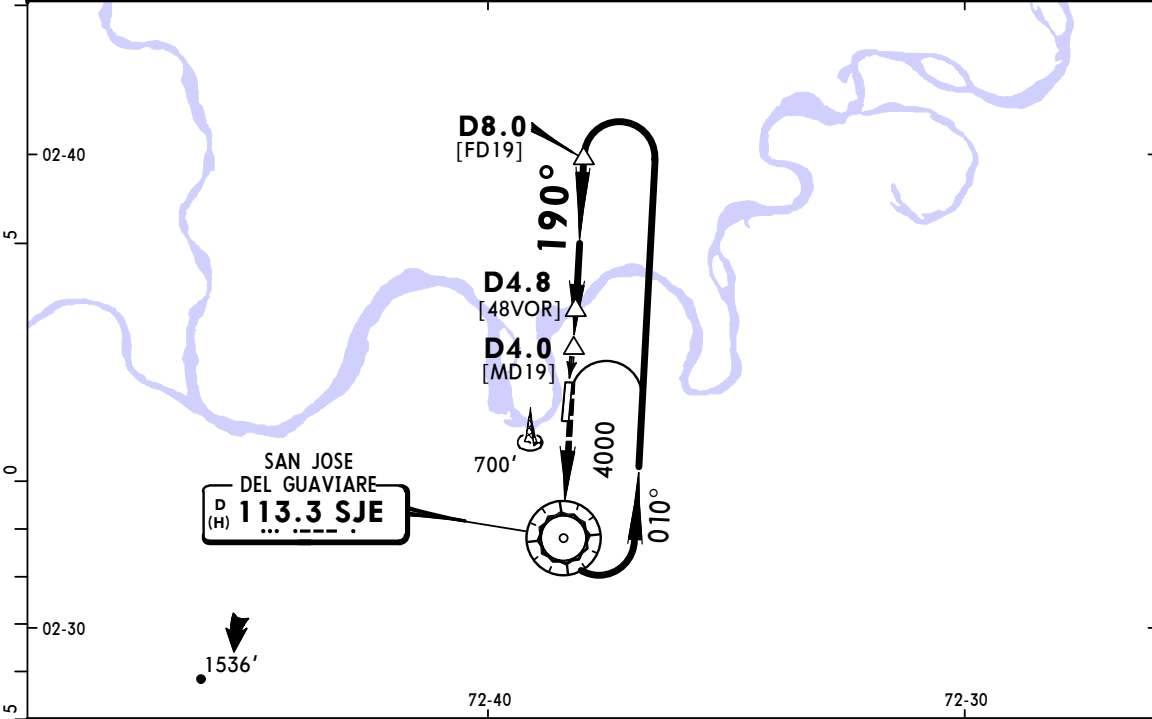
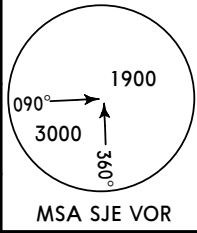


ADDITIONAL RUNWAY INFORMATION

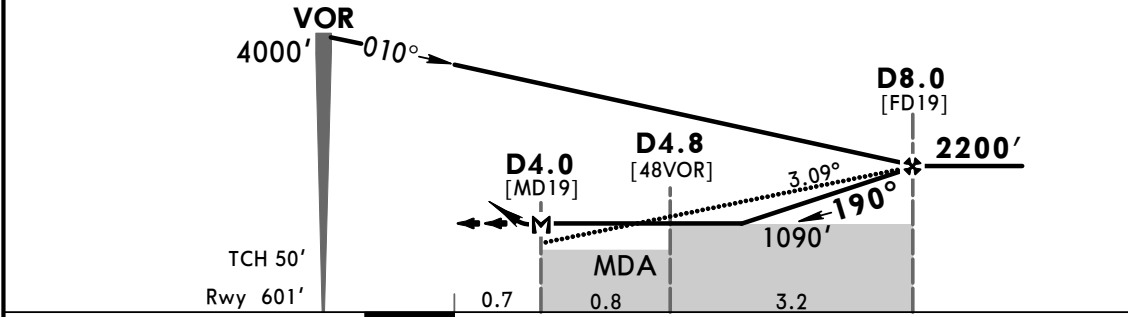
RWY		USABLE LENGTHS			
		LANDING BEYOND		TAKE-OFF	WIDTH
		Threshold	Glide Slope		
01	APAPI (angle 3.5°)				66' 20m
19	① APAPI (angle 3.0°)				
	① Unusable.				

TAKE-OFF	
	All Rwys
A	200' - 1500m
B	
C	
D	
	NOT APPLICABLE

*VILLAVICENCIO Radio (FIS) South 127.3			*JORGE E GONZALEZ Tower 118.5		
VOR SJE 113.3	Final Apch Crs 190°	Minimum Alt D8.0 2200' (1599')	MDA(H) (CONDITIONAL) 1010' (409')	Apt Elev 613'	Rwy 601'
MISSED APCH: Climb to 4000' on 190° heading for holding pattern.					
Alt Set: IN (hPa on req) 1. SJE DME required.		Trans level: FL 190		Trans alt: 18000'	



SJE DME	5.0	6.0	7.0	8.0
ALTITUDE	1260'	1570'	1890'	2200'



Gnd speed-Kts	70	90	100	120	140	160	PAPI	4000' on 190° hdg	SJE 113.3 HOLDING PATTERN	
Descent Angle	3.09°	383	492	547	656	765				875
MAP at D4.0 or FAF to MAP	4.0	3:26	2:40	2:24	2:00	1:43				1:30

STRAIGHT-IN LANDING RWY19			CIRCLE-TO-LAND		
DAY		NIGHT	DAY		NIGHT
MDA(H) 1010' (409')			MDA(H)		
A			Max Kts		
B	2100m		100	1100' (487') - 2400m	
			135	NA	
C	NOT APPLICABLE		C	NOT APPLICABLE	
D	NOT APPLICABLE		D	NOT APPLICABLE	