

Apt Elev  
**672**

Alt Set: hPa (IN on req) Trans level: FL190  
1. RNP 1 or RNAV 1.  
2. GNSS required.

**ISROD 1E [ISRO1E]**  
**NETKU 1B [NETK1B]**  
**SIPIT 1B [SIP11B]**  
**RNAV (GNSS) ARRIVALS**  
**(RWY 34)**

CAT A, B & C

Apt Elev  
**672**

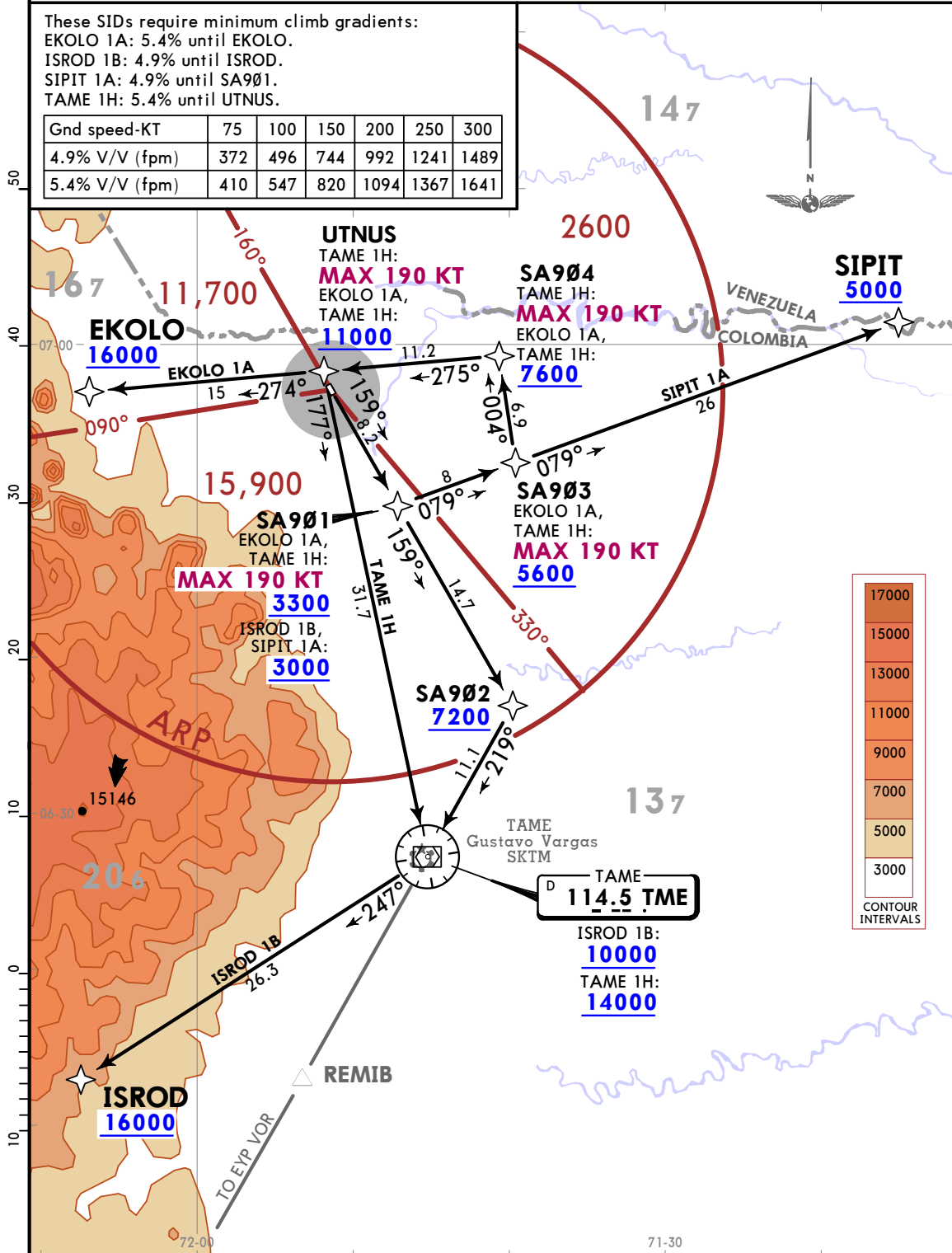
Trans alt: 18000  
1. RNP 1 or RNAV 1.  
2. GNSS required.  
3. Aircraft to EYP VOR, after TME VOR proceed direct to REMIB, MAINTAIN at or above 7000 to cross SA902.

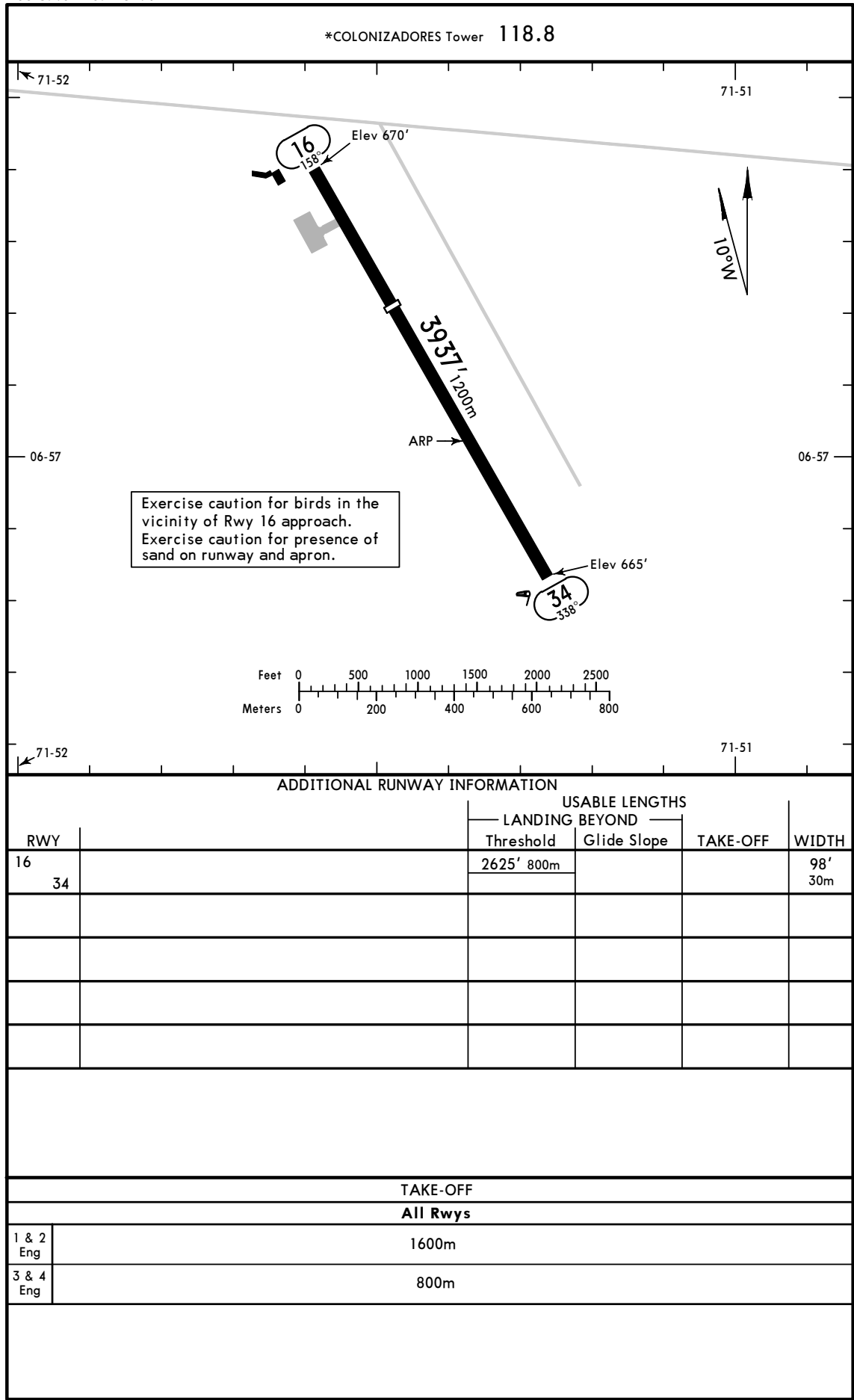
**EKOLO 1A [EKOL1A], ISROD 1B [ISRO1B]  
SIPIT 1A [SIPI1A], TAME 1H [TME1H]  
RNAV (GNSS) DEPARTURES  
(RWY 16)**

CAT A, B & C

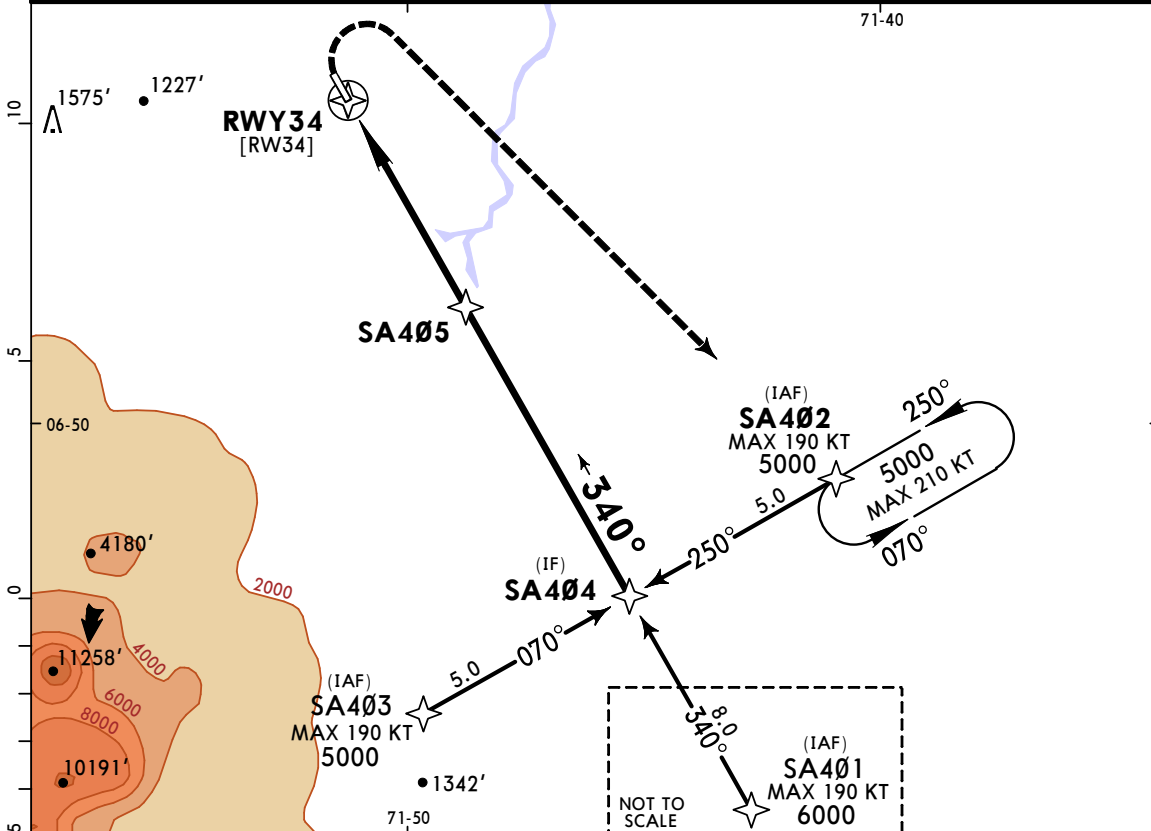
These SIDs require minimum climb gradients:  
EKOLO 1A: 5.4% until EKOLO.  
ISROD 1B: 4.9% until ISROD.  
SIPIT 1A: 4.9% until SA901.  
TAME 1H: 5.4% until UTNUS.

Gnd speed-KT	75	100	150	200	250	300
4.9% V/V (fpm)	372	496	744	992	1241	1489
5.4% V/V (fpm)	410	547	820	1094	1367	1641

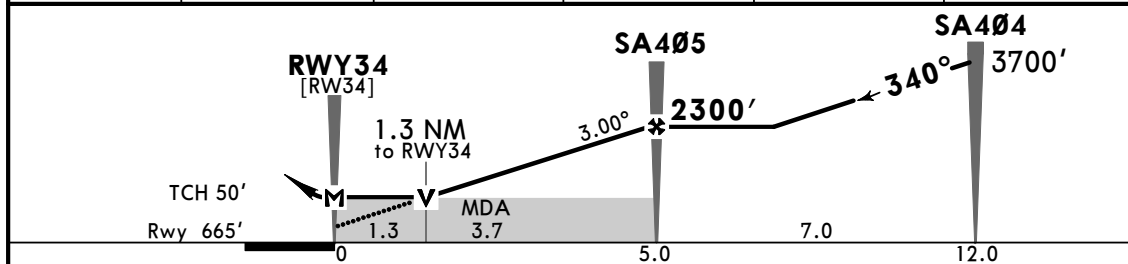




*CUCUTA Approach			*COLONIZADORES Tower		
119.6			118.8		
RNAV	Final Apch Crs <b>340°</b>	SA405 <b>2300'</b> (1635')	LNAV MDA(H) <b>1100'</b> (435')	Apt Elev 672'	Rwy 665'
<b>MISSED APCH: Turn RIGHT to SA402 holding pattern climbing to 5000'. MAX 185 KT.</b>					
Alt Set: IN (hPa on req)		Trans level: FL 190		Trans alt: 18000'	
RNP Apch					



DIST to THR	1.3	2.0	3.0	4.0	SA405
ALTITUDE	1100'	1356'	1670'	1985'	2300'



Gnd speed-Kts	70	90	100	120	140	160	5000'	SA402
Descent Angle 3.00°	372	478	531	637	743	849		
MAP at RWY34								
SA405 to MAP	5.0	4:17	3:20	3:00	2:30	2:09	1:53	RT

STRAIGHT-IN LANDING RWY 34			CIRCLE-TO-LAND		
LNAV			MDA(H)		
MDA(H) 1100' (435')			MDA(H)		
A			Max Kts		
B	2200m		100	1230' (558') - 2500m	
C	2400m		135	1630' (958') - 4500m	
D	NOT APPLICABLE		180	NOT APPLICABLE	

PANS OPS