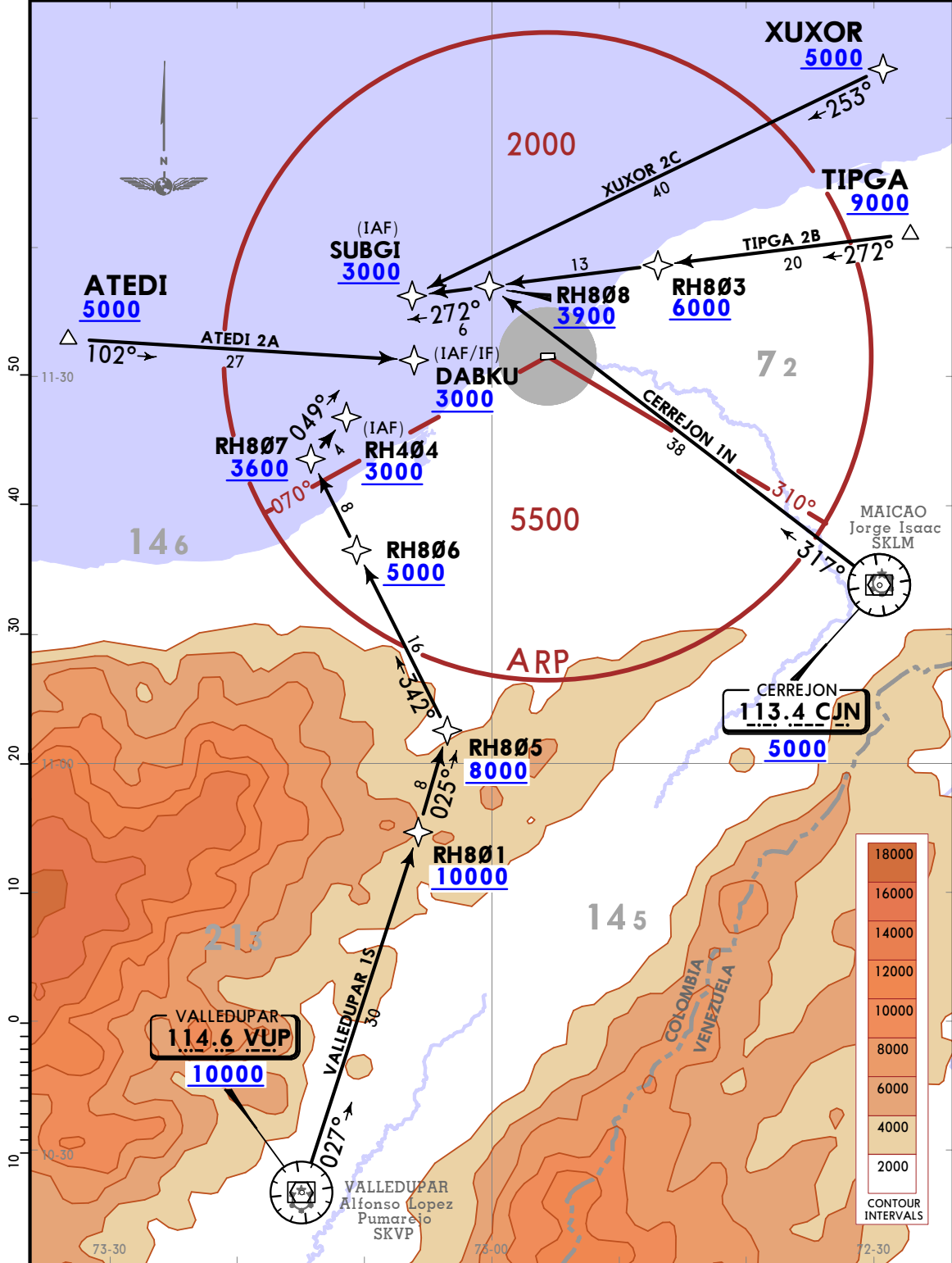


Apt Elev 50	Alt Set: hPa (IN on req) Trans level: FL190
	RNP 1 or RNAV 1 GNSS required

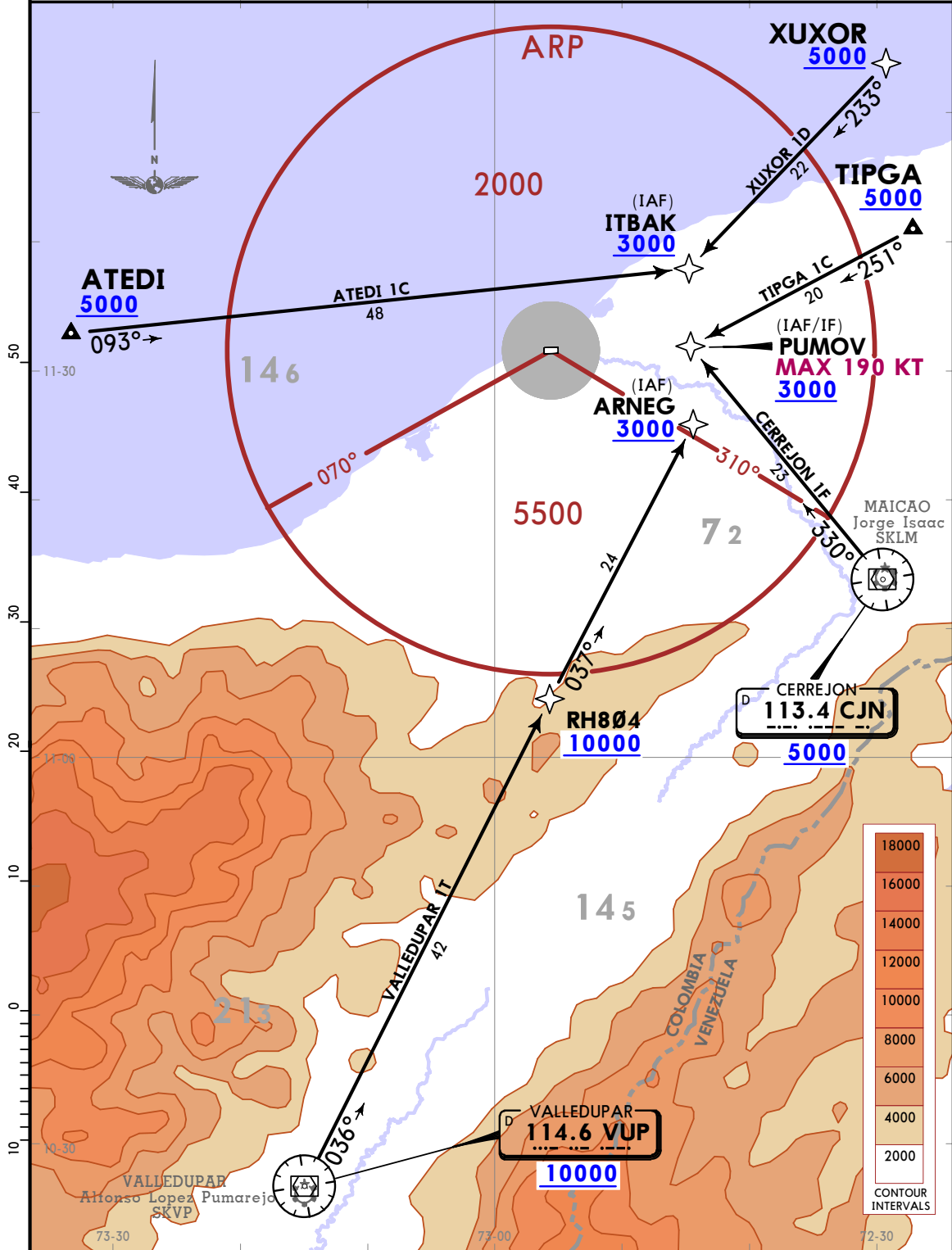
ATEDI 2A [ATED2A], CERREJON 1N [CJN1N], TIPGA 2B [TIPG2B]
VALLEDUPAR 1S [VUP1S], XUXOR 2C [XUX02C]
RNAV (GNSS) ARRIVALS
(RWY 10)
CAT A, B & C



Apt Elev 50	Alt Set: hPa (IN on req) Trans level: FL190
	RNP 1 or RNAV 1 GNSS required

ATEDI 1C [ATED1C], CERREJON 1F [CJN1F], TIPGA 1C [TIPG1C]
VALLEDUPAR 1T [VUP1T], XUXOR 1D [XUX01D]
RNAV (GNSS) ARRIVALS
(RWY 28)

CAT A, B & C

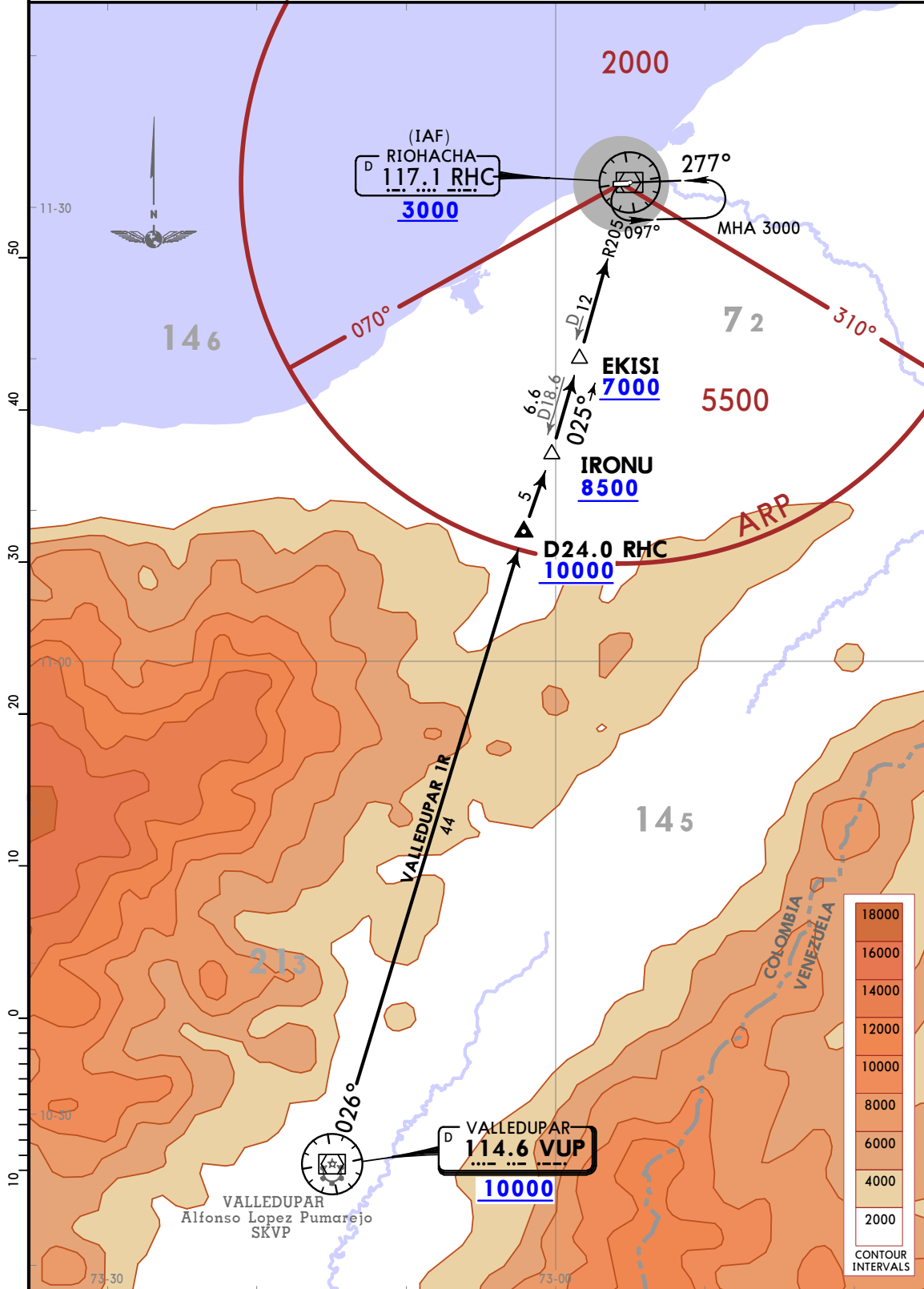


Apt Elev
50

Alt Set: hPa (IN on req) Trans level: FL190

VALLEDUPAR 1R ARRIVAL [VUP1R]
(RWY 10)

CAT A, B & C



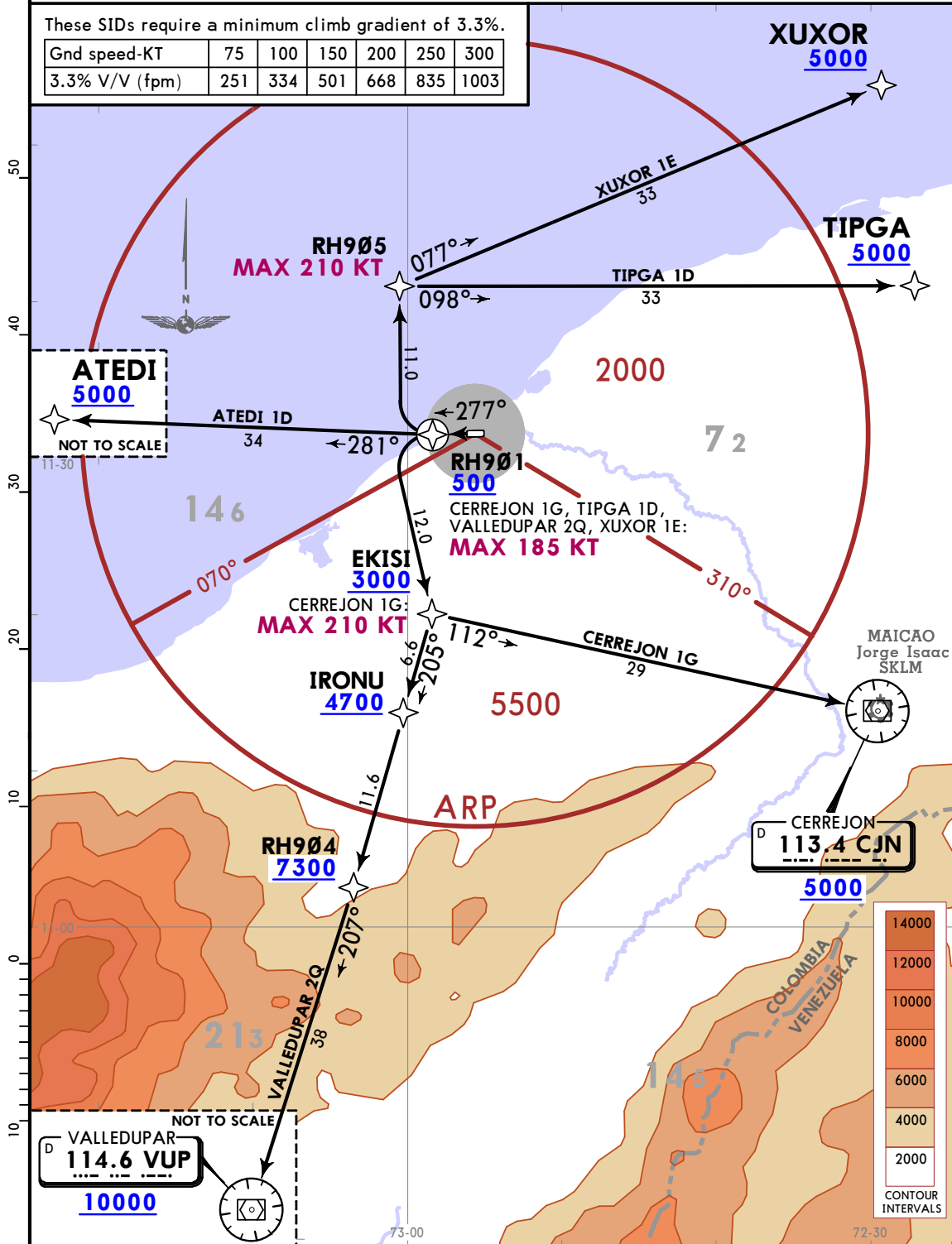
Apt Elev 50	Trans alt: 18000
	RNP 1 or RNAV 1 GNSS required

ATEDI 1D [ATED1D], CERREJON 1G [CJN1G]
TIPGA 1D [TIPG1D], VALLEDUPAR 2Q [VUP2Q]
XUXOR 1E [XUX01E]
RNAV (GNSS) DEPARTURES
(RWY 28)

CAT A, B & C

These SIDs require a minimum climb gradient of 3.3%.

Gnd speed-KT	75	100	150	200	250	300
3.3% V/V (fpm)	251	334	501	668	835	1003



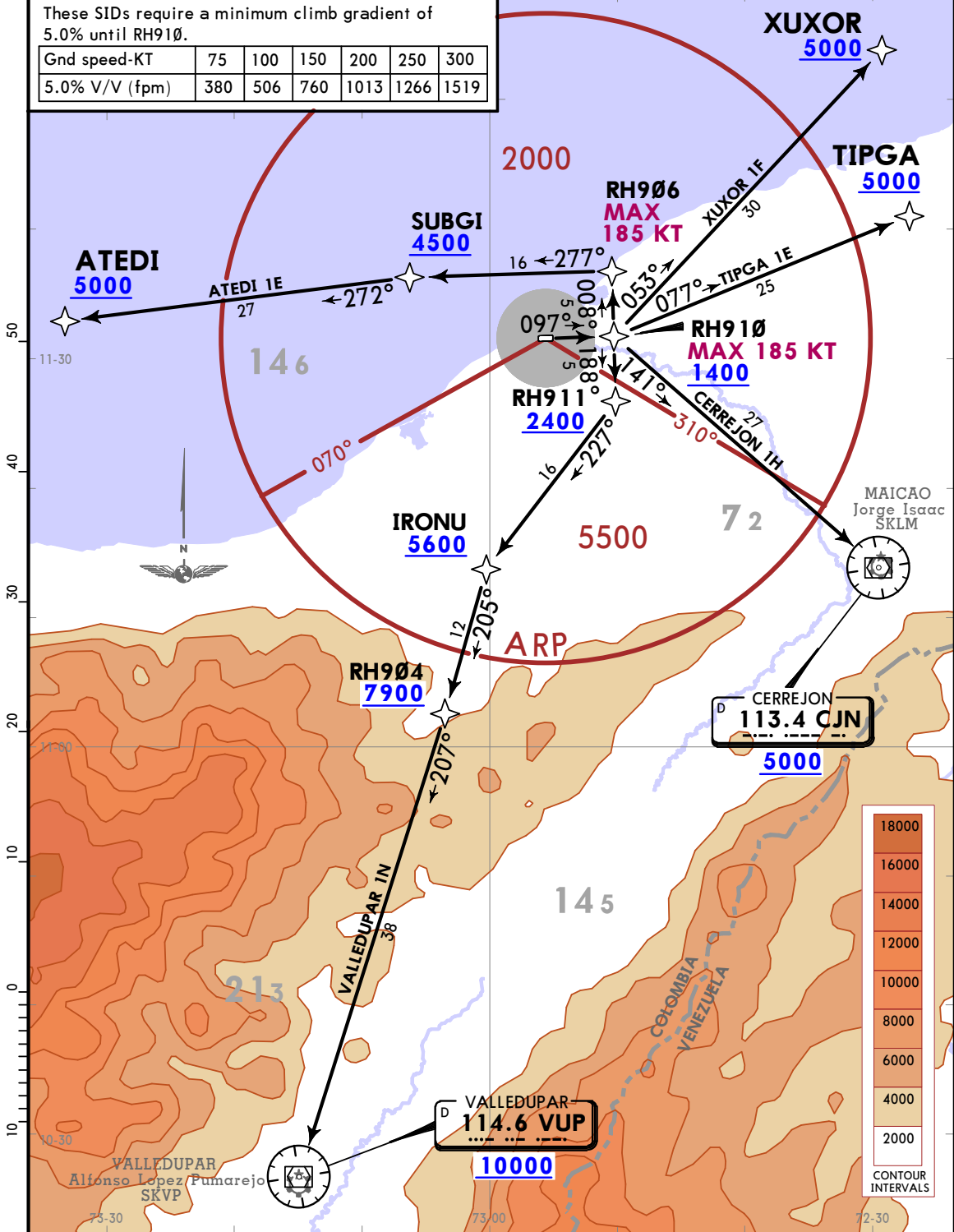
Apt Elev 50	Trans alt: 18000
	RNP 1 or RNAV 1 GNSS required

ATEDI 1E [ATED1E], CERREJON 1H [CJN1H]
TIPGA 1E [TIPG1E], VALLEDUPAR 1N [VUP1N]
XUXOR 1F [XUXO1F]
RNAV (GNSS) DEPARTURES
(RWY 10)

CAT A, B & C

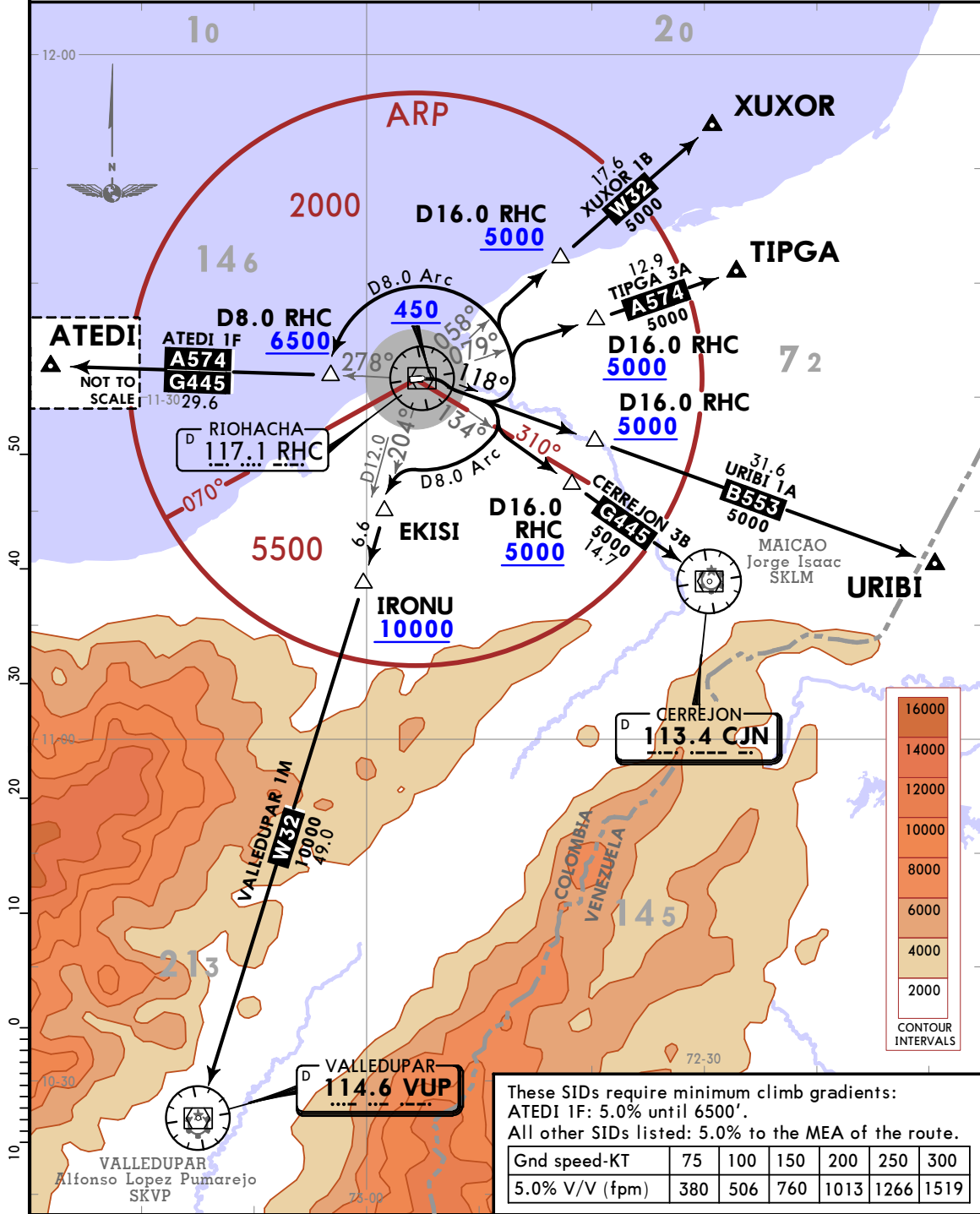
These SIDs require a minimum climb gradient of 5.0% until RH910.

Gnd speed-KT	75	100	150	200	250	300
5.0% V/V (fpm)	380	506	760	1013	1266	1519



Apt Elev 50
Trans alt: 18000
Turns prohibited before the departure end of runway.

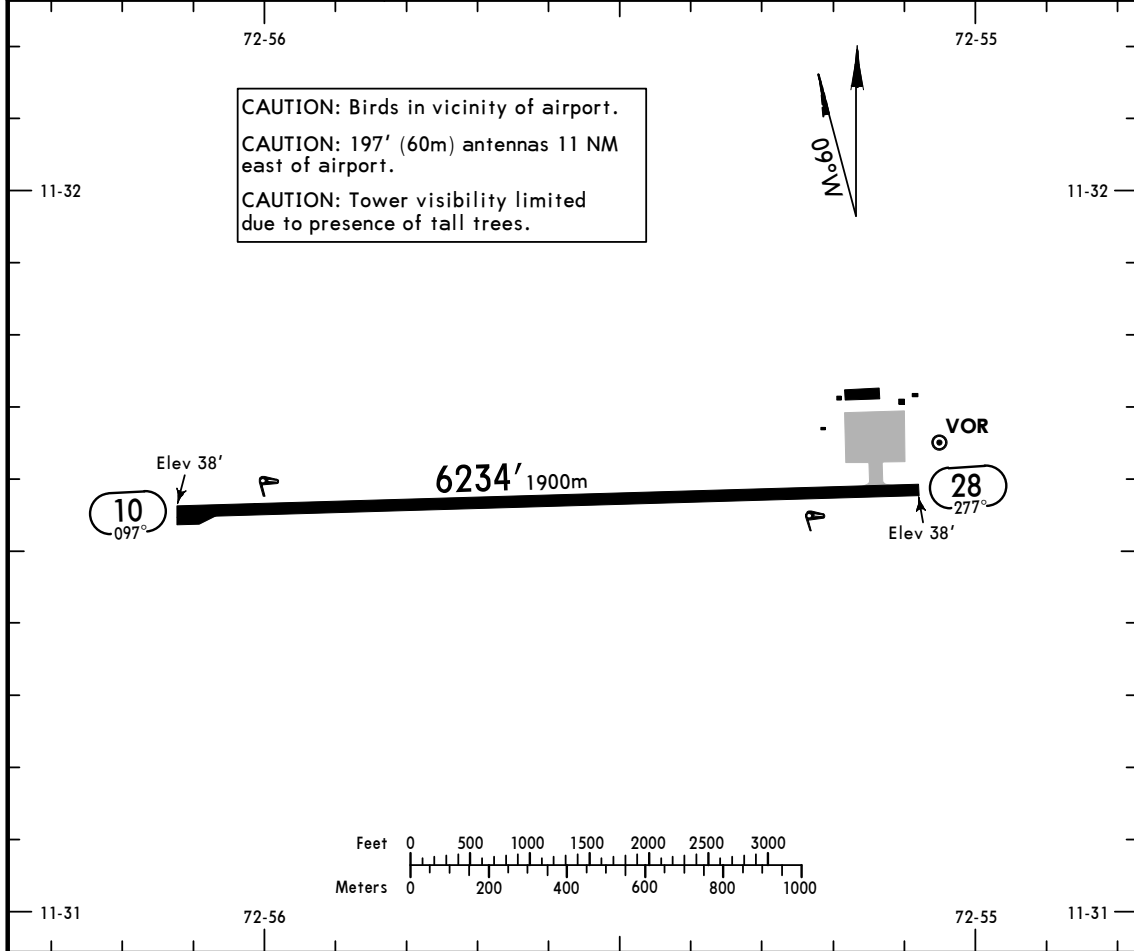
ATEDI 1F [ATED1F], CERREJON 3B [CJN3B]
TIPGA 3A [TIPG3A], URIBI 1A [URIB1A]
VALLEDUPAR 1M [VUP1M], XUXOR 1B [XUXO1B]
DEPARTURES
(RWY 10)
CAT A, B & C



INITIAL CLIMB

MAINTAIN runway heading to 450. Intercept and follow RHC R118.

*AWOS 132.1	BARRANQUILLA Information (FIS) 127.5	*ALMIRANTE PADILLA Tower 118.4
----------------	---	-----------------------------------



ADDITIONAL RUNWAY INFORMATION

RWY		USABLE LENGTHS			WIDTH
		Threshold	Landing Beyond Glide Slope	TAKE-OFF	
10 ①	MIRL PAPI (angle 3.0°)				98'
28	MIRL				30m

① First 1969' (600m) surface uneven, use caution.

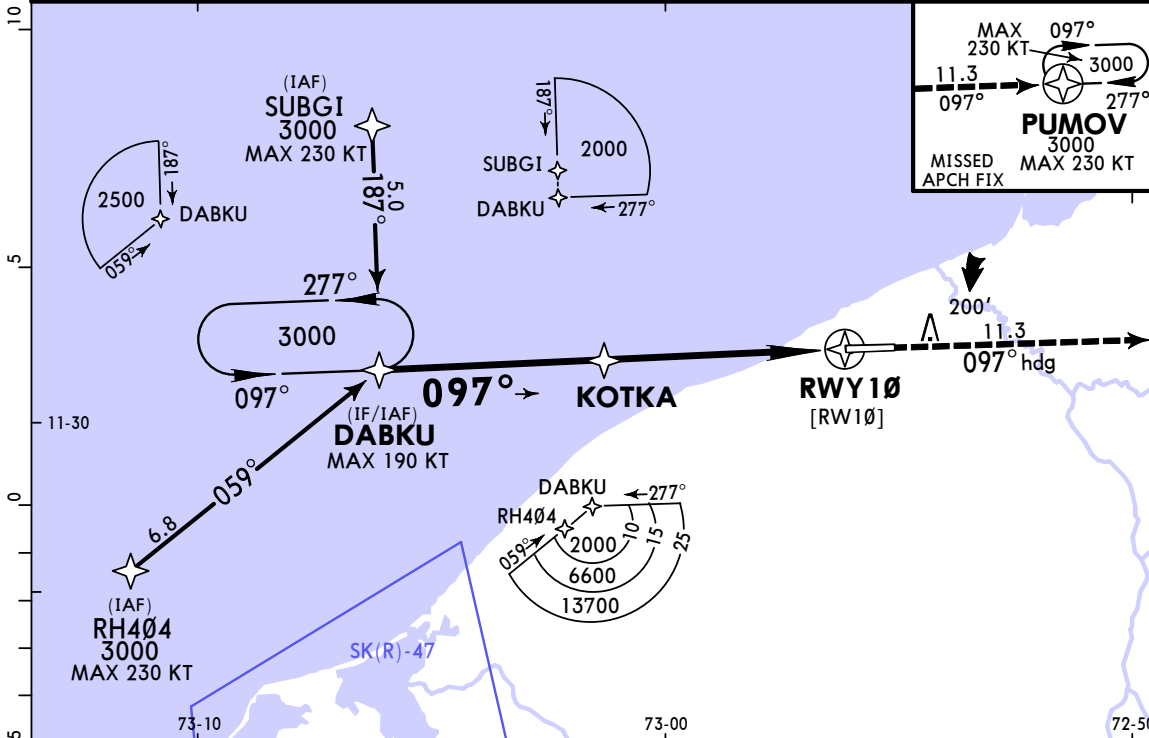
TAKE-OFF

All Rwys

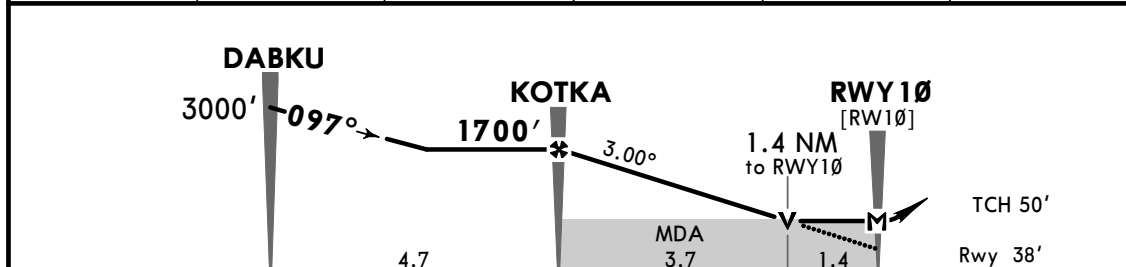
Standard

1 & 2 Eng	3 & 4 Eng
1600m	800m

*AWOS 132.1		BARRANQUILLA Information (FIS) 127.5		*ALMIRANTE PADILLA Tower 118.4	
RNAV	Final Apch Crs 097°	KOTKA 1700' (1662')	LNAV/CDFA MDA(H) (CONDITIONAL) 520' (482')	Apt Elev 50' Rwy 38'	TAA 25 NM IAF
MISSED APCH: Climb on runway heading 097° to PUMOV and hold at 3000'. Missed Apch climb gradient mim 4.2%.					
Alt Set: IN (hPa on req)		Trans level: FL 190		Trans alt: 18000'	
RNP Apch					



DIST to THR	5.0	4.0	3.0	2.0	1.4
ALTITUDE	1680'	1362'	1044'	726'	520'

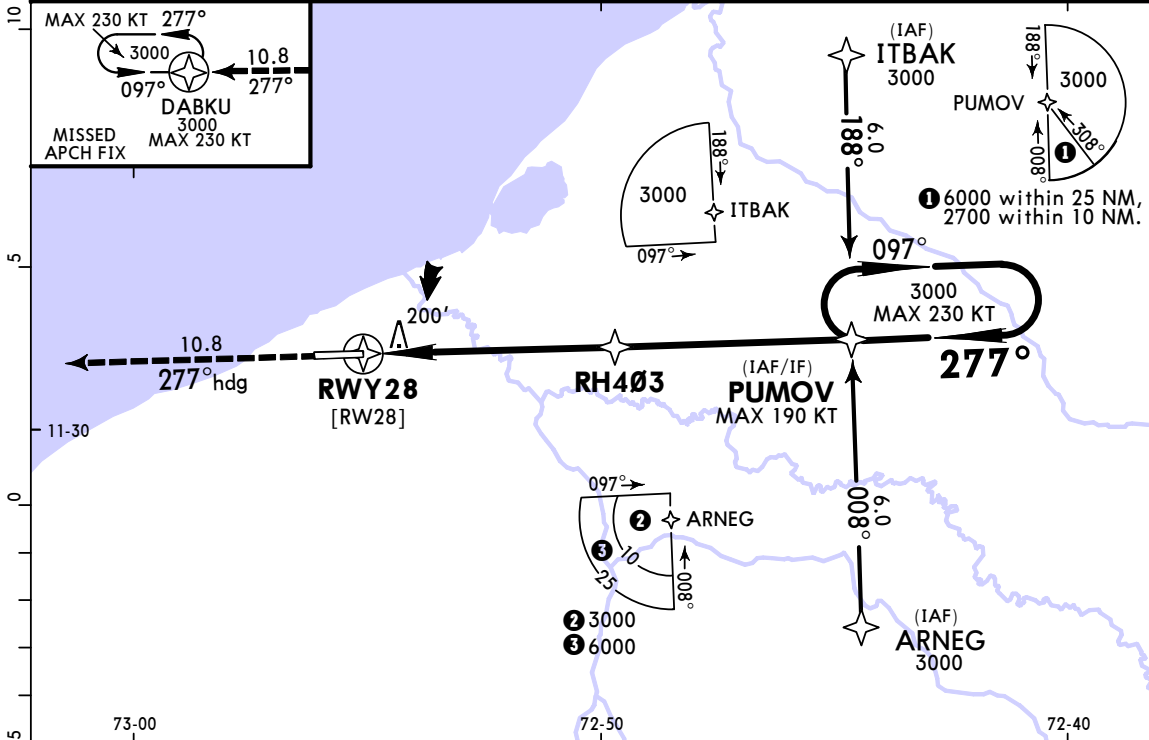


Gnd speed-Kts	70	90	100	120	140	160	PAPI 3000' ↑ 097° hdg PUMOV
Descent Angle 3.00°	372	478	531	637	743	849	
MAP at RWY10							
FAF to MAP	5.1	4:22	3:24	3:04	2:33	2:11	1:55

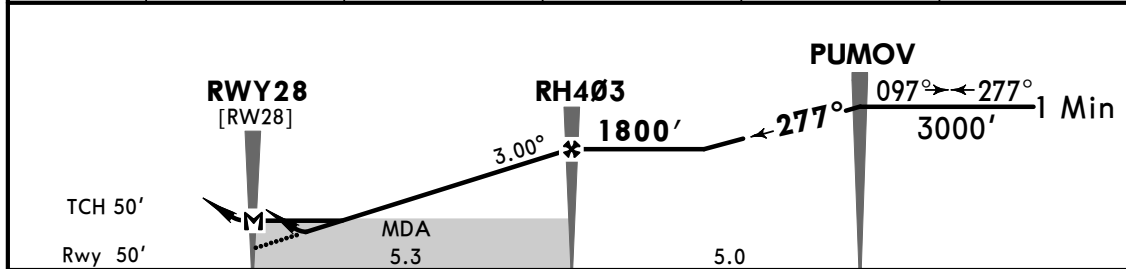
STRAIGHT-IN LANDING RWY10	
LNAV/CDFA MDA(H) 520'(482')	LNAV MDA(H) 520'(482')
A B	1500m 2500m
C	2400m
D	NOT APPLICABLE

PANS OPS

*AWOS 132.1		BARRANQUILLA Information (FIS) 127.5		*ALMIRANTE PADILLA Tower 118.4	
RNAV	Final Apch Crs 277°	RH403 1800' (1750')	LNAV/VNAV DA(H) 370' (320')	Apt Elev 50'	TAA 25 NM IAF
MISSED APCH: Climb on runway heading 277° to DABKU and hold at 3000'.					
RNP Apch Alt Set: IN (hPa on req)			Trans level: FL 190	Trans alt: 18000'	
For uncompensated Baro-VNAV systems, LNAV/VNAV not authorized below 15°C or above 38°C.					



DIST to RWY28	1.0	2.0	3.0	4.0	5.3
ALTITUDE	418'	737'	1055'	1374'	1800'



Gnd speed-Kts	70	90	100	120	140	160	3000' on 277° hdg DABKU
Descent Angle 3.00°	372	478	531	637	743	849	
LNAV/VNAV: MAP at DA, LNAV: MAP at RWY28.							
RH403 to MAP	5.3	4:33	3:32	3:11	2:39	2:16	1:59

STRAIGHT-IN LANDING RWY28	
LNAV/VNAV DA(H) 370' (320')	LNAV MDA(H) 470' (420')
A	
B	1400m
C	1500m
D	2300m
NOT APPLICABLE	

PANS OPS

SKRH/RCH
ALMIRANTE PADILLA

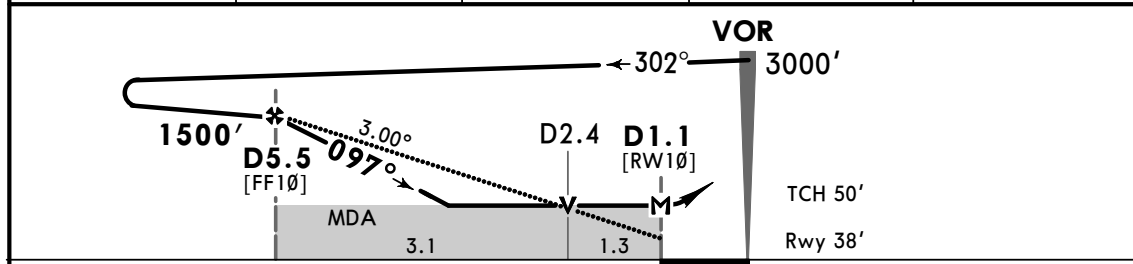
JEPPESEN
22 JAN 21
Eff 28 Jan (13-1)

RIOHACHA, COLOMBIA
CAT A, B & C VOR Rwy 10

*AWOS 132.1		BARRANQUILLA Information (FIS) 127.5		*ALMIRANTE PADILLA Tower 118.4		
VOR RHC 117.1	Final Apch Crs 097°	D5.5 1500' (1462')	MDA(H) 520' (482')	Apt Elev 50' Rwy 38'		
MISSED APCH: Turn RIGHT to RHC VOR, hold climbing to 3000'.						
Alt Set: IN (hPa on req)		Trans level: FL 190		Trans alt: 18000'		
DME required.					MSA RHC VOR	



RHC DME	5.5	5.0	4.0	3.0
ALTITUDE	1500'	1350'	1030'	710'



Gnd speed-Kts	70	90	100	120	140	160	PAPI	3000' RT	RHC 117.1
Descent Angle 3.00°	372	478	531	637	743	849			
MAP at D1.1	4.4	3:46	2:56	2:38	2:12	1:53			

STRAIGHT-IN LANDING RWY10				CIRCLE-TO-LAND			
MDA(H) 520' (482')				MDA(H) _____			
A	2500m			Max Kts 100	540' (490') - 2500m		
B	2700m			135	780' (730') - 3600m		
C	NOT APPLICABLE			180	NOT APPLICABLE		
D	NOT APPLICABLE			D	NOT APPLICABLE		