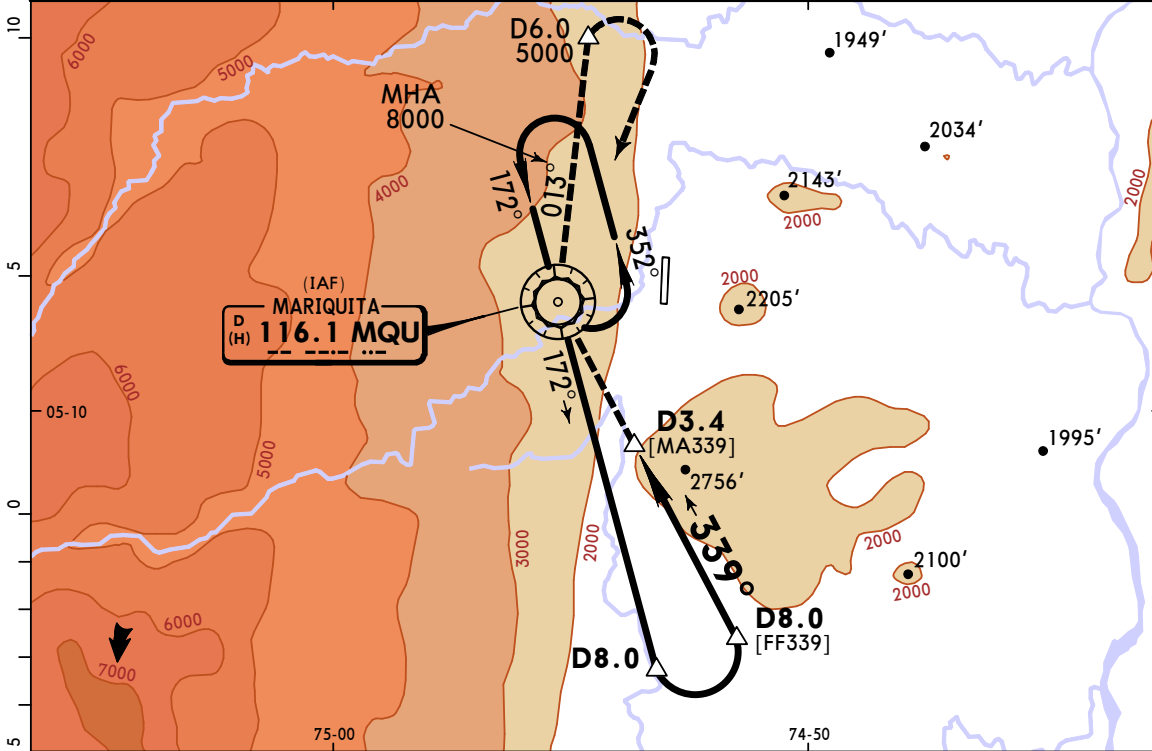


ADDITIONAL RUNWAY INFORMATION

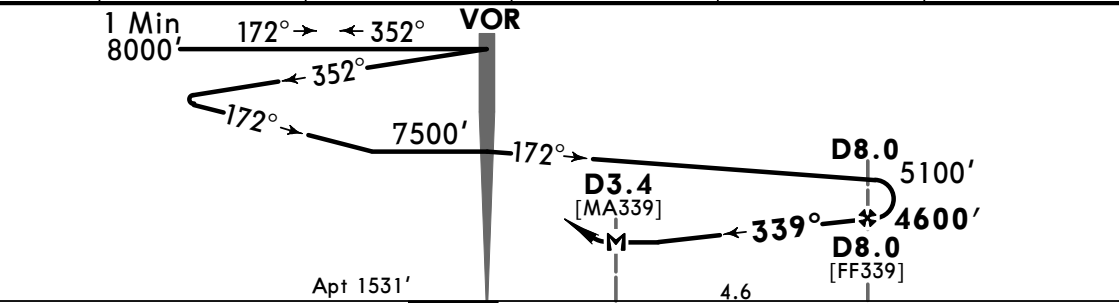
RWY	USABLE LENGTHS			WIDTH
	LANDING BEYOND Threshold	Glide Slope	TAKE-OFF	
01 19				164' 50m

TAKE-OFF	
	All Rwys
A	2070' - 5.0 km
B	
C	
D	NOT APPLICABLE

BOGOTA Approach North 121.3 West 119.95		*BOGOTA FIS 126.9		*MARIQUITA Tower 118.7		
VOR MQU 116.1	Final Apch Crs 339°	D8.0 4600' (3069')	MDA(H) Refer to Minimums	Apt Elev 1531'		
<p>MISSED APCH: Maintain 339° course to leave MQU VOR via MQU VOR R-013 outbound. At D6.0 and 5000' turn RIGHT to MQU VOR holding pattern (Minimum Alt 8000'). Missed approach climb gradient minimum 4.4%.</p>						
Alt Set: IN (hPa on req)		Trans level: FL 190		Trans alt: 18000'		
1. VOR/DME required. 2. Aircraft in hold should descend to 7500' to initiate approach.						



MQU DME	4.0	5.0	6.0	7.0	8.0
ALTITUDE	3289'	3612'	3936'	4244'	4600'



Gnd speed-Kts	70	90	100	120	140	160	339° to MQU 116.1
MAP at D3.4							
FAF to MAP	4.6	3:57	3:04	2:46	2:18	1:58	

STRAIGHT-IN LANDING RWY 01				CIRCLE-TO-LAND			
PANS OPS	A	NA	Max Kts	MDA(H)			
	B			3100' (1569') - 5000m			
	C			NA			
	D			NA			