

Apt Elev
5687

Trans alt: 18000

CALI 3B DEPARTURE [CLO3B] (RWY 26)

CAT A, B & C

This SID requires takeoff minimums:
RWY 08: Ceiling 1500, visibility 8.0km.
RWY 26: Ceiling 0, visibility 1.6km.

This SID requires a minimum climb gradient of 4.0% to airway R-567 MEA.

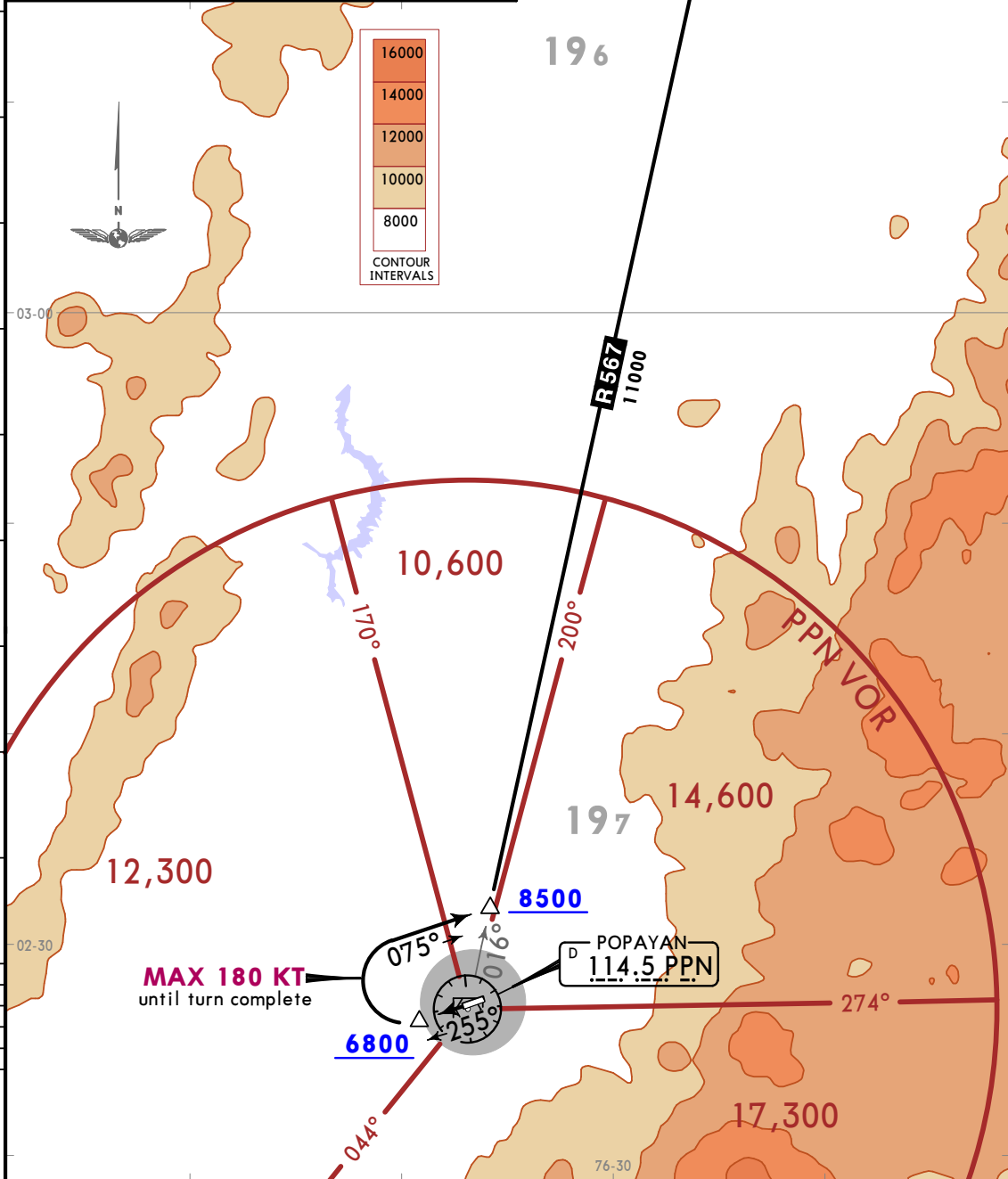
Gnd speed-KT	75	100	150	200	250	300
4.0% V/V (fpm)	304	405	608	810	1013	1215

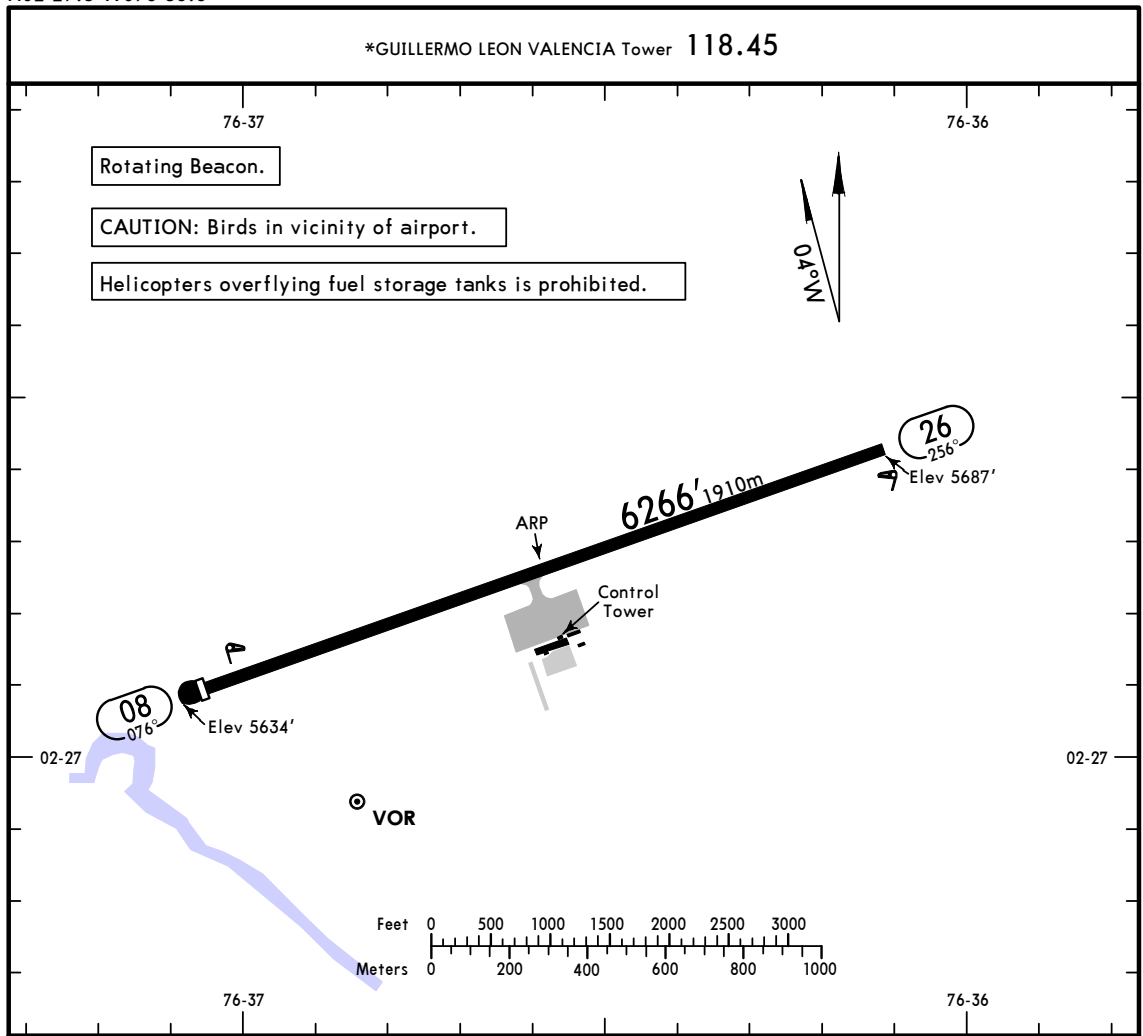
INITIAL CLIMB

At 6800 turn RIGHT, follow track 075° to intercept PPN R016 toward CLO VOR.

CALI
D 115.5 CLO

50
45
40
35
30
25
20
15
10
5
0
5





ADDITIONAL RUNWAY INFORMATION

RWY		USABLE LENGTHS		TAKE-OFF	WIDTH
		Threshold	LANDING BEYOND Glide Slope		
08	MIRL PAPI-L (angle 3.0°)	6070' 1850m		6070' 1850m	131'
26	MIRL				40m

TAKE-OFF

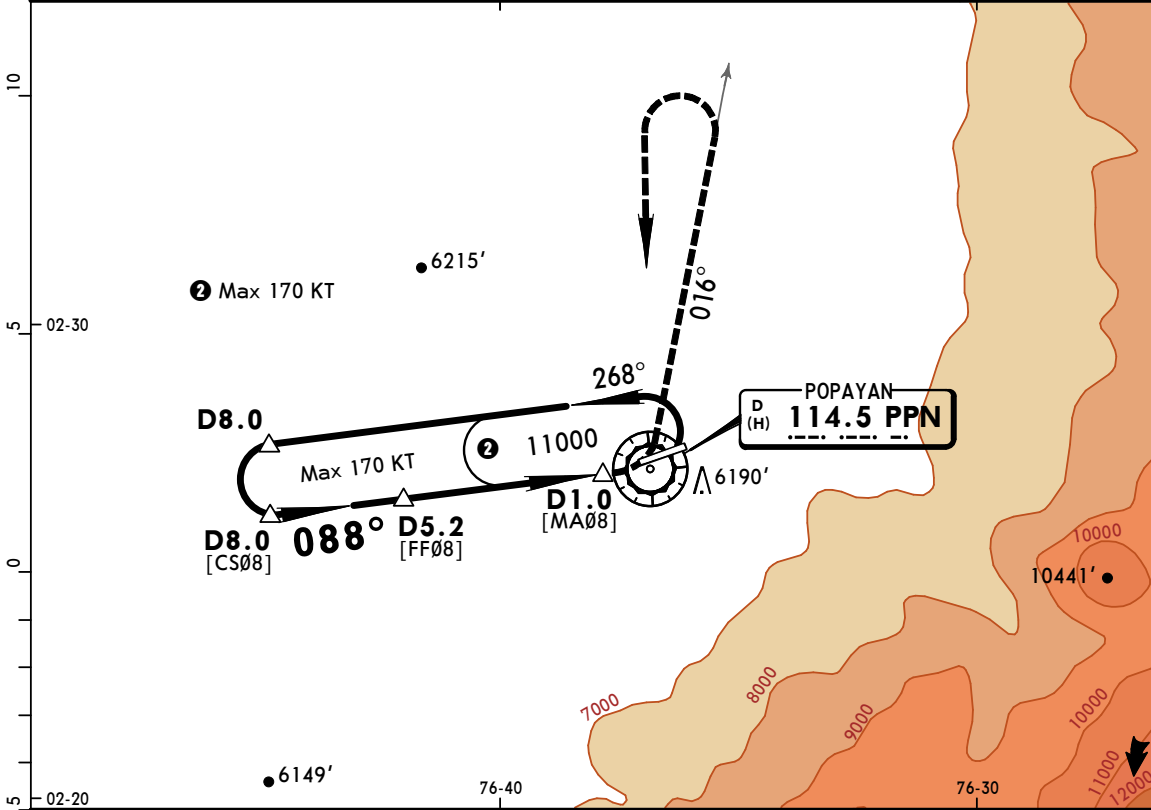
	Rwy 08	Rwy 26
A	1500' - 8.0 km	1.6 km
B		
C		
D	NOT APPLICABLE	

SKPP/PPN
GUILLERMO LEON VALENCIA

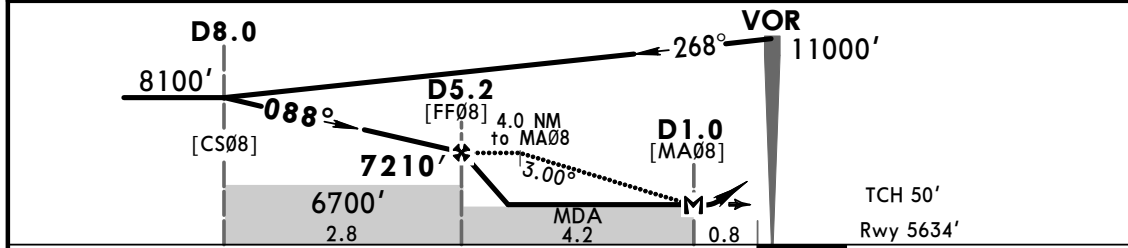
JEPPesen
30 DEC 16
Eff 5 Jan (13-1)

POPAYAN, COLOMBIA
CAT A, B & C VOR Y Rwy 08

CALI Approach 119.1				*GUILLERMO LEON VALENCIA Tower 118.45	
VOR PPN 114.5	Final Apch Crs 088°	Minimum Alt D5.2 7210' (1576')	MDA(H) 6200' (566')	Apt Elev 5687' Rwy 5634'	
MISSED APCH: Turn LEFT to intercept outbound PPN VOR R-016. At 8000' turn LEFT to holding pattern climbing to 11000'. Alt Set: IN (hPa on req) Trans level: FL 190 Trans alt: 18000' 1. DME required. 2. Aircraft that will hold with IAS of 170 kts or higher the minimum altitude will be 14,000'.					



PPN DME	5.0	4.0	3.0	2.0
ALTITUDE	7196'	6880'	6564'	6248'



Gnd speed-Kts	70	90	100	120	140	160	PAPI-L	Intercept PPN 114.5 R-016	8000'	
Descent angle	3.00°	372	478	531	637	743				849
MAP at D1.0 or FAF to MAP	4.2	3:36	2:48	2:31	2:06	1:48				1:35

STRAIGHT-IN LANDING RWY 08			CIRCLE-TO-LAND		
MDA(H) 6200' (566')			Not Authorized South of Airport		
PANS OPS	A		Max Kts	100	MDA(H) 6370' (683') -3600m
	B	2800m	135	6580' (893') -4200m	
	C	3000m	180	6960' (1273') -5000m	
	D	NOT APPLICABLE	D	NOT APPLICABLE	

CHANGES: Missed apch bearing.

© JEPPESEN, 2007, 2016. ALL RIGHTS RESERVED.

SKPP/PPN

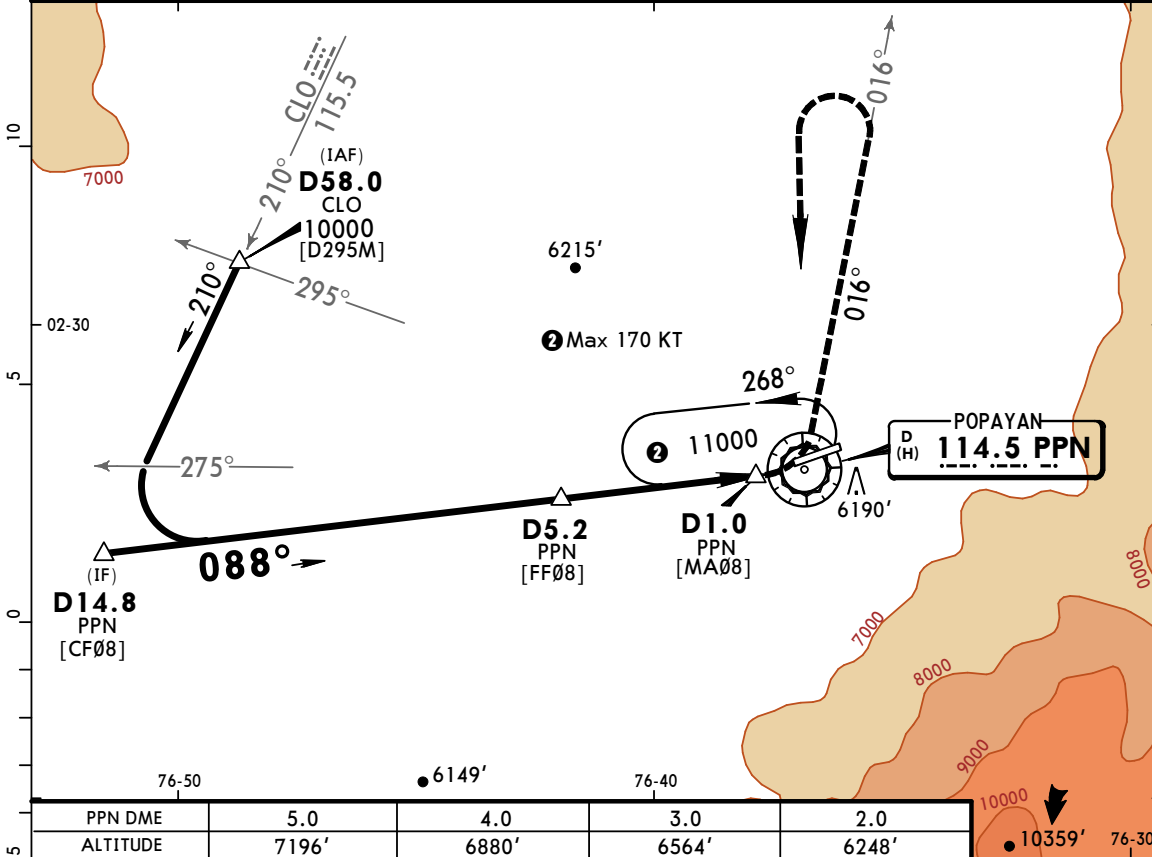
GUILLERMO LEON VALENCIA

30 DEC 16
Eff 5 Jan

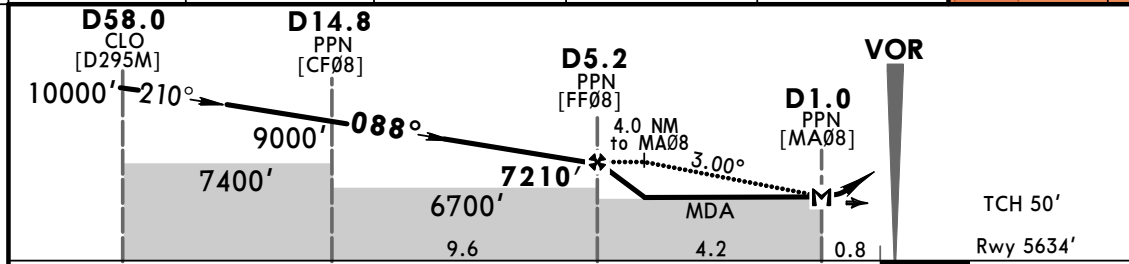
JEPPESEN
13-2

POPAYAN, COLOMBIA
CAT A, B & C VOR Z Rwy 08

CALI Approach 119.1			*GUILLERMO LEON VALENCIA Tower 118.45		
VOR PPN 114.5	Final Apch Crs 088°	Minimum Alt D5.2 PPN 7210' (1576')	MDA(H) 6200' (566')	Apt Elev 5687'	Rwy 5634'
MISSED APCH: Turn LEFT to intercept outbound PPN VOR R-016. At 8000' turn LEFT to holding pattern climbing to 11000'.					
Alt Set: IN (hPa on req) Trans level: FL 190 Trans alt: 18000' 1. DME required. 2. Aircraft that will hold with IAS of 170 kts or higher the minimum altitude will be 14,000'.					
					MSA PPN VOR 10,600'



PPN DME	5.0	4.0	3.0	2.0
ALTITUDE	7196'	6880'	6564'	6248'



Gnd speed-Kts	70	90	100	120	140	160	PAPI-L	Intercept PPN 114.5 R-016	8000'
Descent angle	3.00°	372	478	531	637	743			
MAP at D1.0 PPN or FAF to MAP	4.2	3:36	2:48	2:31	2:06	1:48	1:35		

STRAIGHT-IN LANDING RWY 08		CIRCLE-TO-LAND	
MDA(H) 6200' (566')		Not Authorized South of Airport	
	Max Kts	MDA(H)	
A	100	6370' (683') - 3600m	
B	135	6580' (893') - 4200m	
C	180	6960' (1273') - 5000m	
D	NOT APPLICABLE	NOT APPLICABLE	