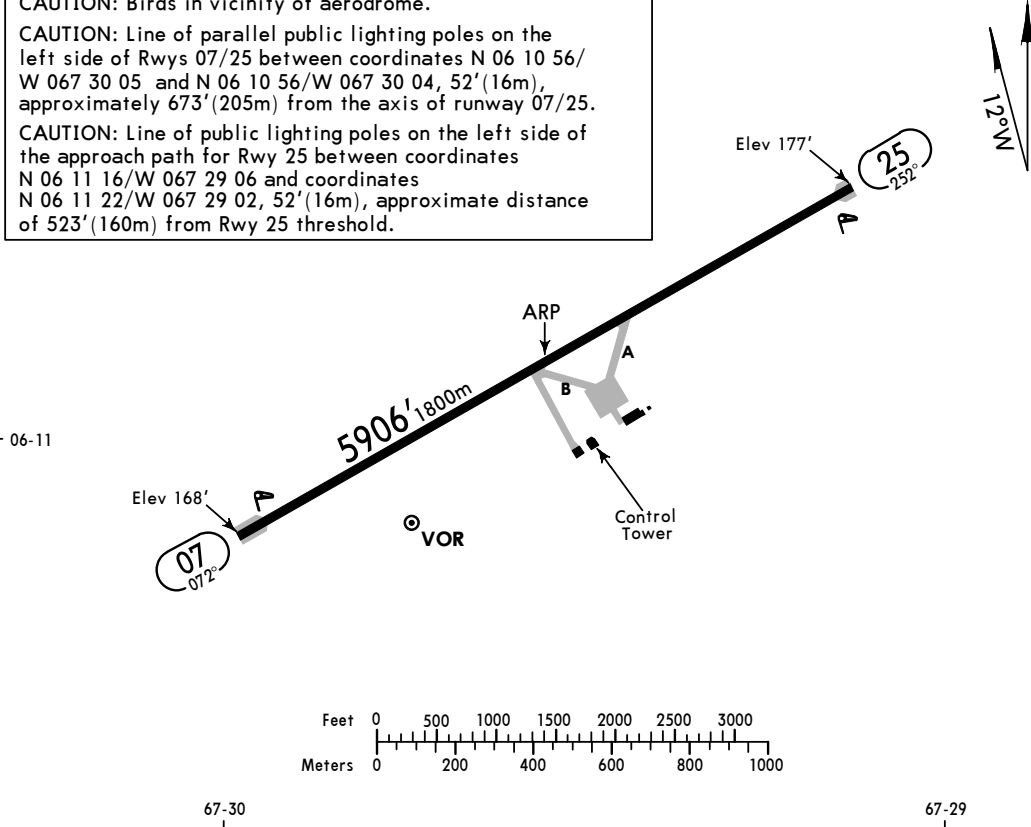


Apt Elev 177	Trans alt: 18000
SIDUN 1A DEPARTURE [SIDU1A] (RWY 25) CAT A & B	
This SID requires takeoff minimums: Ceiling 760, Visibility 2900m.	
This SID requires a minimum climb gradient of 3.3%.	
Gnd speed-KT	75 100 150 200 250 300
3.3% V/V (fpm)	251 334 501 668 835 1003

*PUERTO CARRENO Tower 118.1

CAUTION: Trees on takeoff path of Rwy 07.
 CAUTION: Birds in vicinity of aerodrome.
 CAUTION: Line of parallel public lighting poles on the left side of Rwys 07/25 between coordinates N 06 10 56/W 067 30 05 and N 06 10 56/W 067 30 04, 52'(16m), approximately 673'(205m) from the axis of runway 07/25.
 CAUTION: Line of public lighting poles on the left side of the approach path for Rwy 25 between coordinates N 06 11 16/W 067 29 06 and coordinates N 06 11 22/W 067 29 02, 52'(16m), approximate distance of 523'(160m) from Rwy 25 threshold.



ADDITIONAL RUNWAY INFORMATION

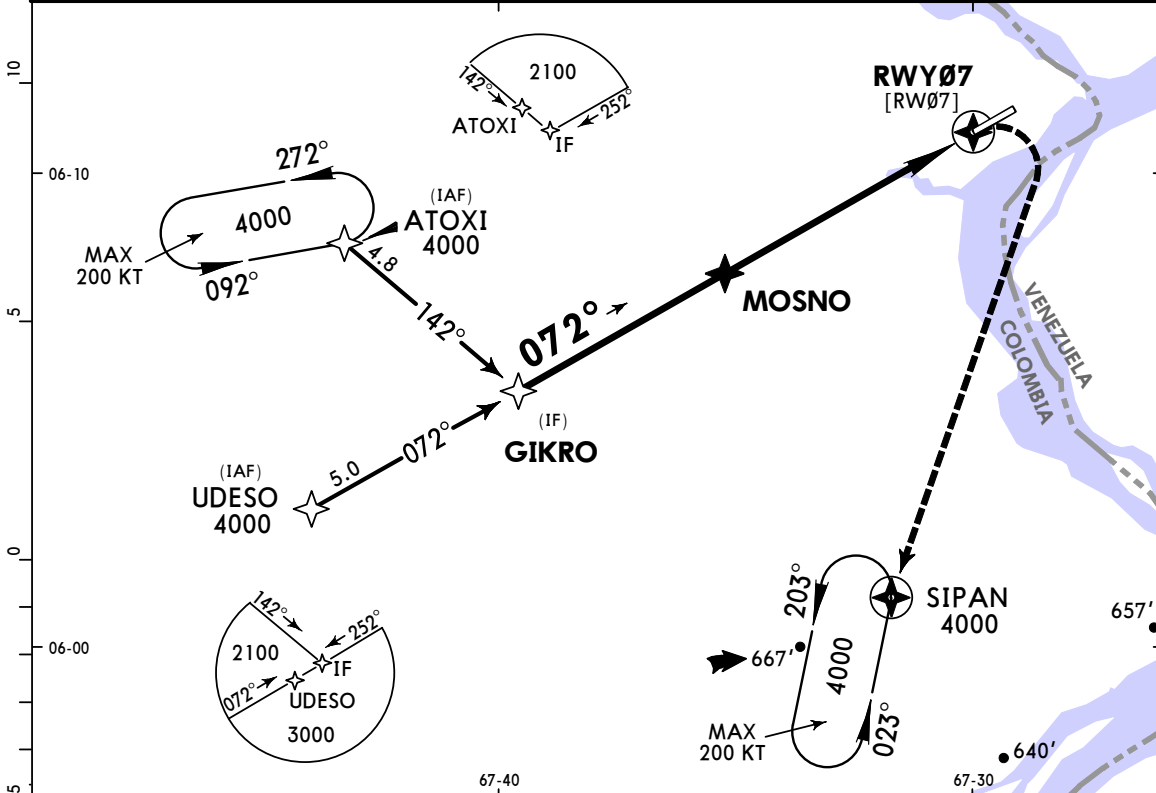
RWY		USABLE LENGTHS		TAKE-OFF	WIDTH
		Threshold	Landing Beyond		
07	RL PAPI-L (angle 3.00°)				66'
25	RL				20m

TAKE-OFF	
	All Rwys
A	600' - 3.0 km
B	
C	
D	
	NOT APPLICABLE

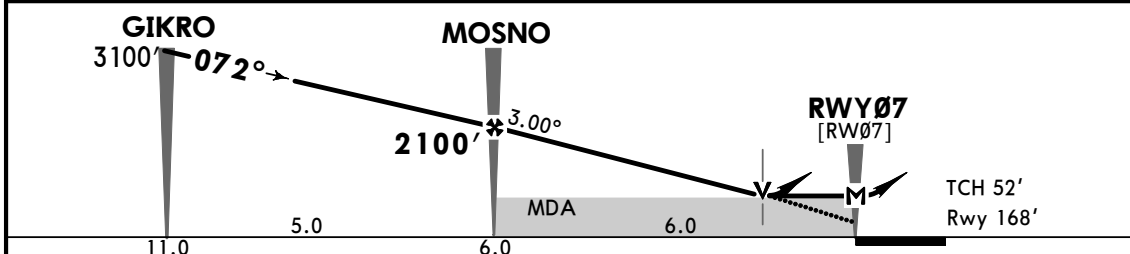
*PUERTO CARRENO Tower 118.1

BRIEFING STRIP™

RNAV	Final Apch Crs 072°	MOSNO 2100' (1932')	LNAV/VNAV DA(H) 580' (412')	Apt Elev 177' Rwy 168'	TAA 25 NM IAF	
MISSED APCH: Climbing RIGHT turn (MAX IAS 160 KT until end of turn) to SIPAN and hold at 4000'. Missed apch climb gradient mim 4.0%						
Alt Set: INCHES (hPa on req)			Trans level: FL190			Trans alt: 18000'
RNP approach required. 1. GNSS only. 2. Holding at ATOXI and SIPAN simultaneously at the same altitude is prohibited. 3. For uncompensated Baro-VNAV, procedure not authorized below 10°C or above 42°C.						



DIST to RW07	6.0	5.0	4.0	3.0	2.0
ALTITUDE	2139'	1821'	1503'	1184'	866'



Gnd speed-Kts	70	90	100	120	140	160	PAPI-L	4000'	RT	SIPAN
Descent Angle 3.00°	372	478	531	637	743	849				
MAP at RW07 or MOSNO to MAP	6.0	5:09	4:00	3:36	3:00	2:34				

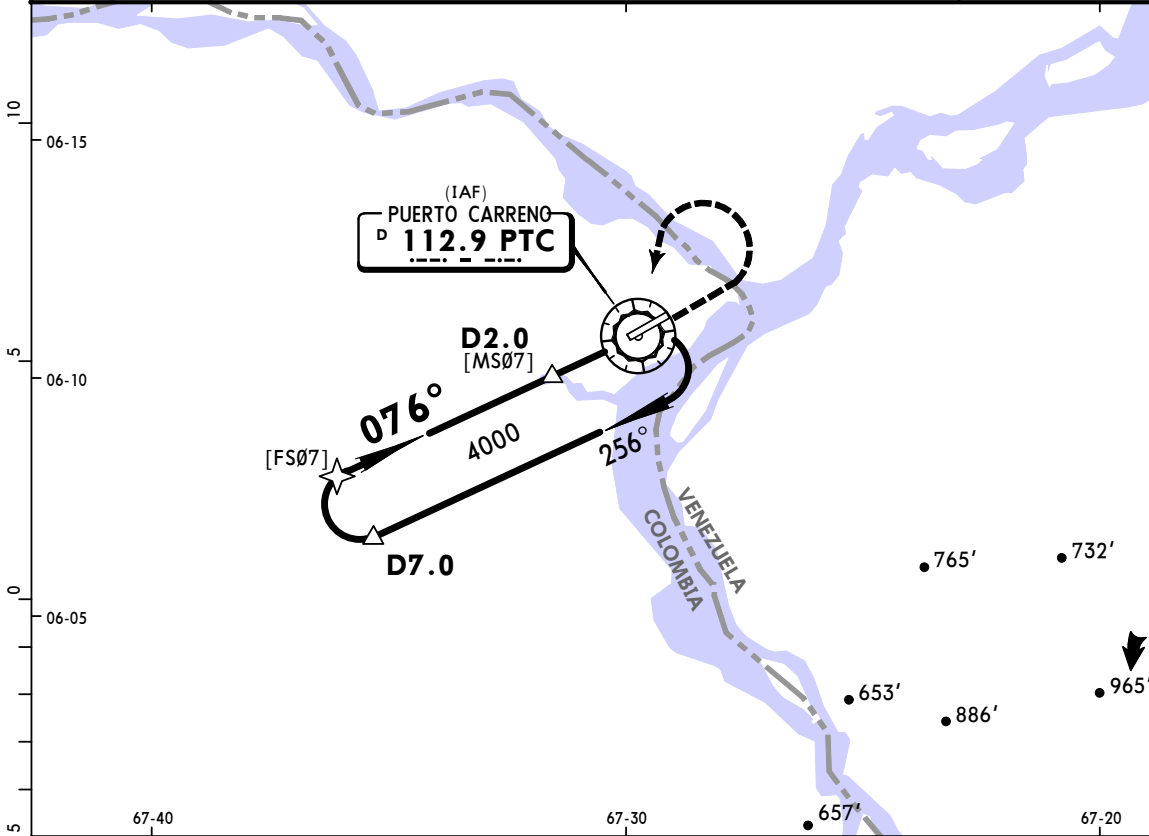
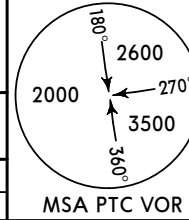
STRAIGHT-IN LANDING RWY 07			CIRCLE-TO-LAND	
LNAV/VNAV DA(H)	LNAV MDA(H)	Max Kts	MDA(H)	
580' (412')	580' (412')	100	780' (603') - 3000m	
1900m	2100m	135	780' (603') - 3200m	
1900m	2300m	180	780' (603') - 3200m	
NOT APPLICABLE	NOT APPLICABLE	D	NOT APPLICABLE	

PANS OPS

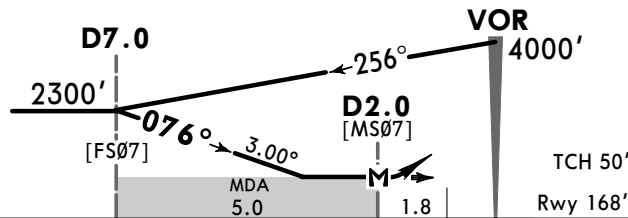
*PUERTO CARRENO Tower 118.1

BRIEFING STRIP™

VOR PTC 112.9	Final Apch Crs 076°	No FAF	MDA(H) 760' (592')	Apt Elev 177' Rwy 168'
MISSED APCH: Climbing LEFT turn to PTC VOR holding pattern to 4000'.				
Alt Set: INCHES (hPa on req)		Trans level: FL190		Trans alt: 18000'
1. DME required.				



PTC DME	7.0	6.0	5.0	4.0	3.0	2.0
ALTITUDE	2300'	1997'	1694'	1391'	1088'	785'



Gnd speed-Kts	70	90	100	120	140	160	PAPI	4000' LT	PTC 112.9 HOLDING PATTERN
Descent Angle 3.00°	372	478	531	637	743	849			
MAP at D2.0									

STRAIGHT-IN LANDING RWY 07

MDA(H) **760' (592')**

CIRCLE-TO-LAND

A	2900m	Max Kts	100	MDA(H)	770'(593') - 2900m
B		135			
C	NOT APPLICABLE	C		NOT APPLICABLE	
D		D			

PANS OPS