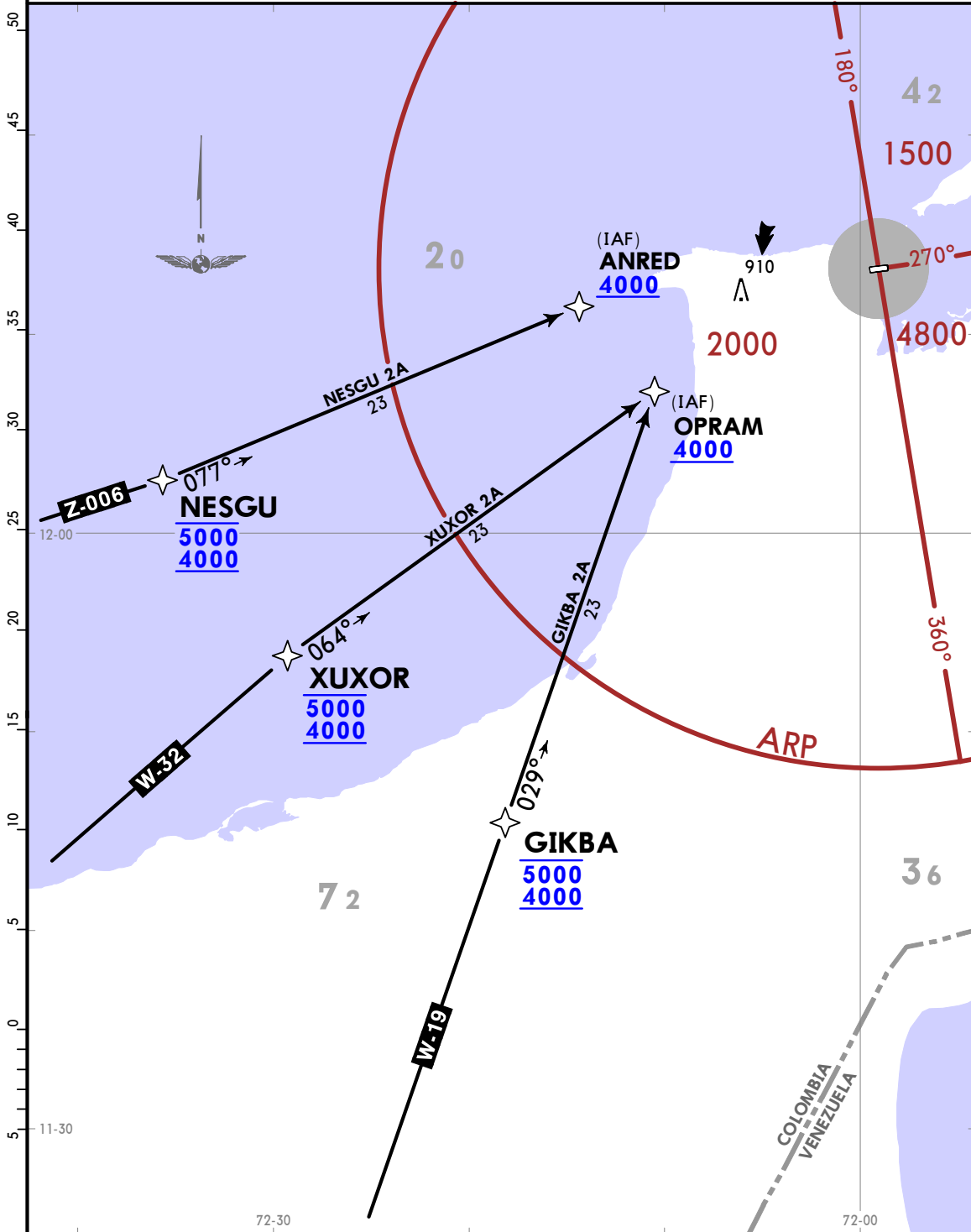


Apt Elev
93

Alt Set: IN (hPa on req) Trans level: FL190
1. RNP 1 or RNAV 1.
2. GNSS required.

GIKBA 2A [GIKB2A]
NESGU 2A [NESG2A]
XUXOR 2A [XUXO2A]
RNAV (GNSS) ARRIVALS
(RWY 09)
CAT A, B & C



Apt Elev 93	Trans alt: 18000 1. RNP 1 or RNAV 1. 2. GNSS required.
-----------------------	--

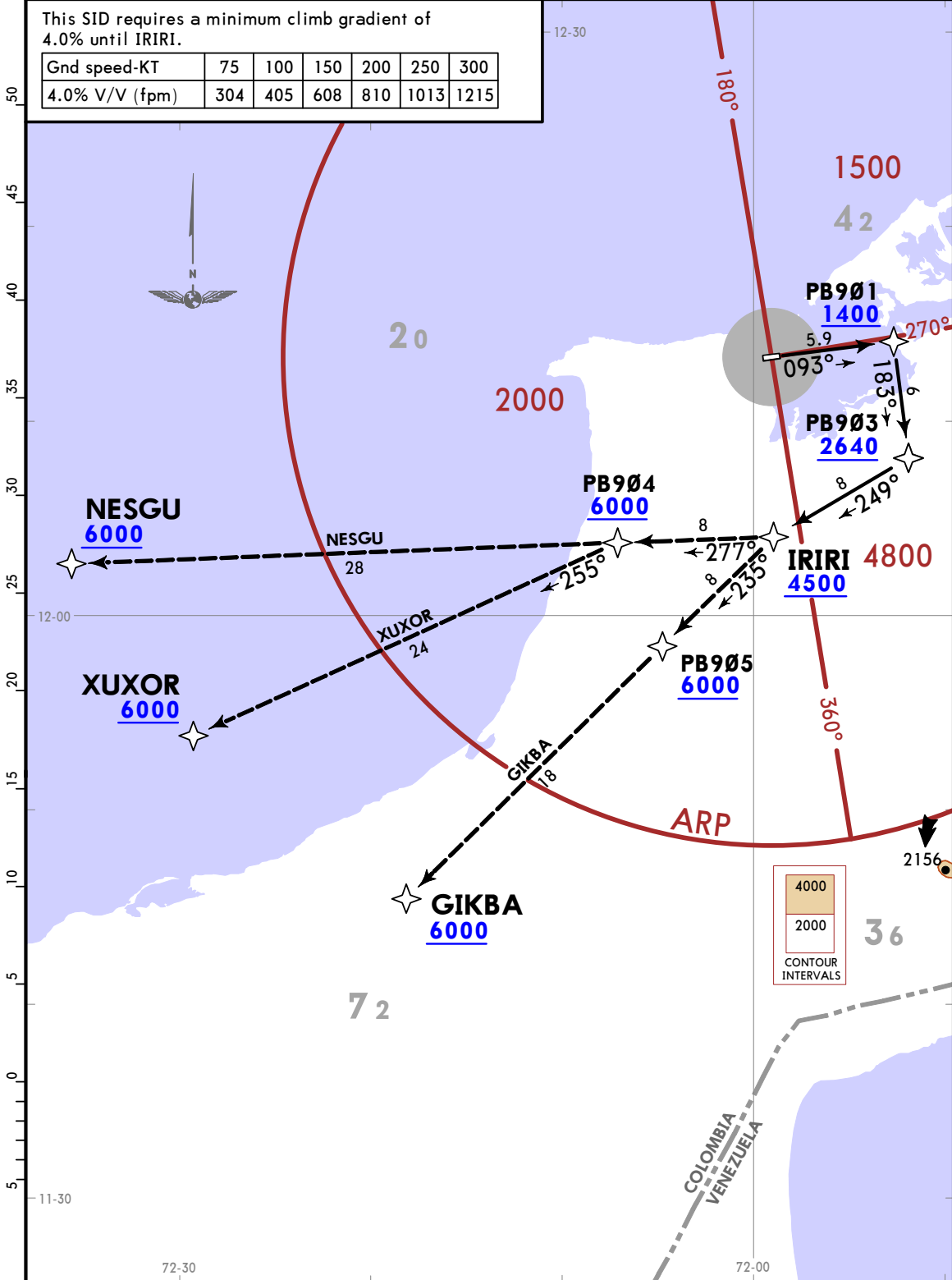
IRIRI 1A RNAV (GNSS) DEPARTURE

[IRIR1A]
(RWY 09)

CAT A, B & C

This SID requires a minimum climb gradient of 4.0% until IRIRI.

Gnd speed-KT	75	100	150	200	250	300
4.0% V/V (fpm)	304	405	608	810	1013	1215



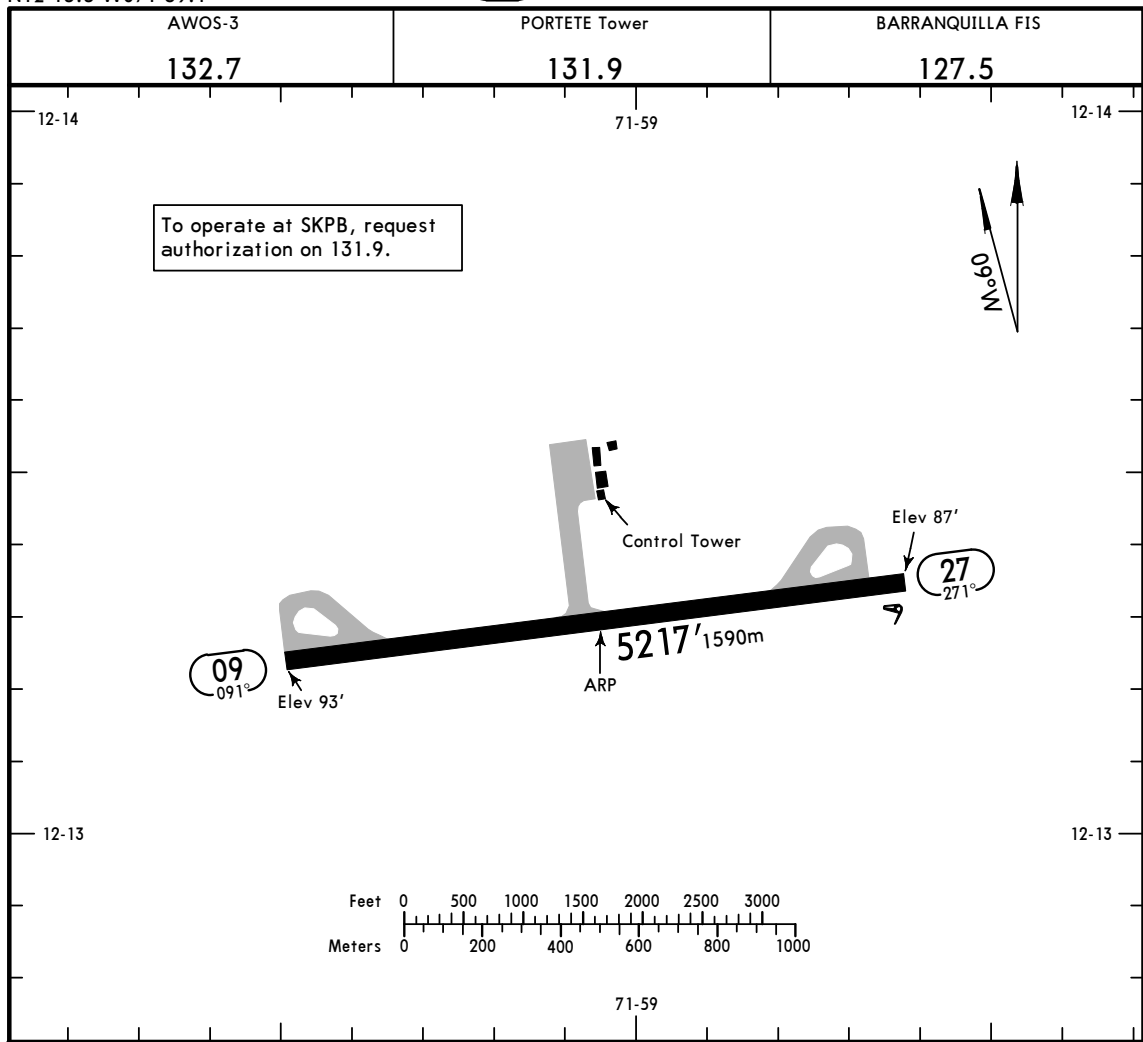
SKPB

Apt Elev 93'
N12 13.3 W071 59.1

JEPPESEN PUERTO BOLIVAR, COLOMBIA

24 JUL 20 (10-9)

PORTETE



ADDITIONAL RUNWAY INFORMATION

RWY		USABLE LENGTHS		TAKE-OFF	WIDTH
		LANDING BEYOND Threshold	Glide Slope		
09	RL PAPI-L (angle 2.5°)				148'
27	RL				45m

TAKE-OFF

All Rwys

Standard

1 & 2 Eng

3 & 4 Eng

1600m

800m

Weather at Maicao (La Mina) and Riochaca must be above meteorological minimums, with runway edge lights in service, for its use as an alternate.

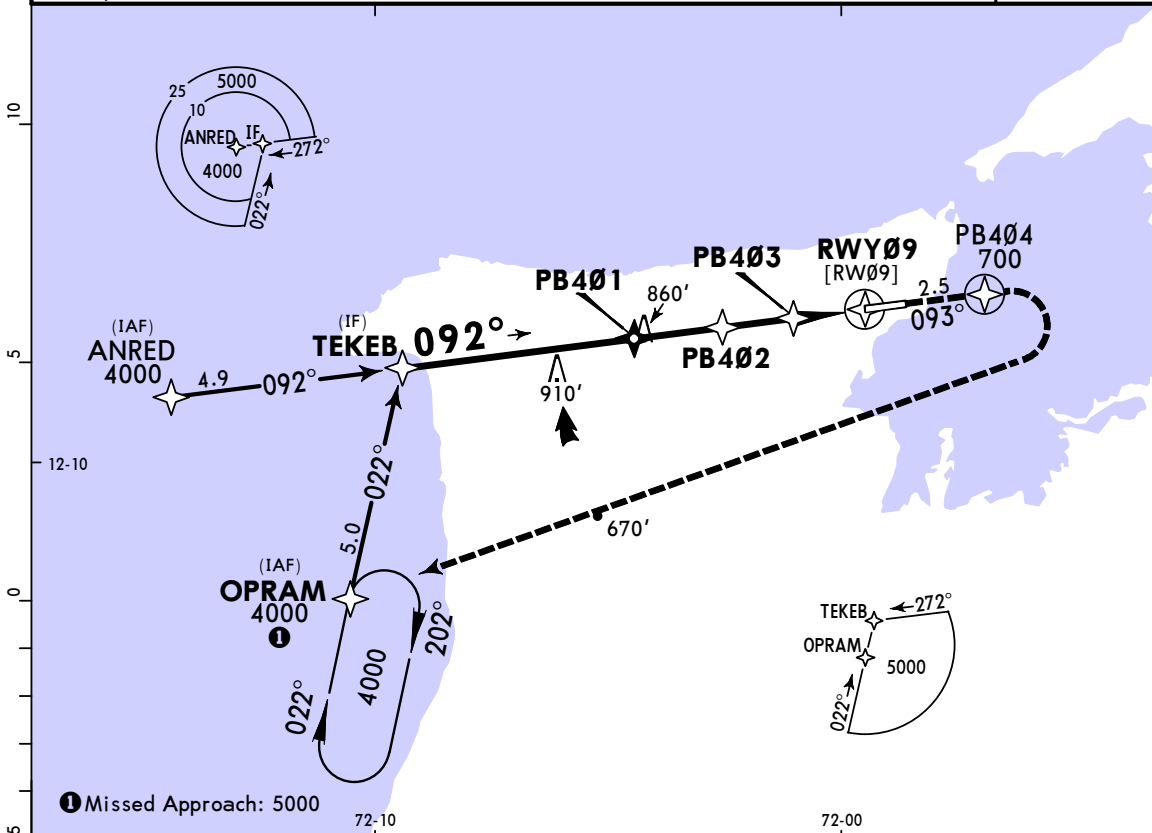
SKPB
PORTETE

MISSED APCH CLIMB
GRADIENT MIM 4.0%

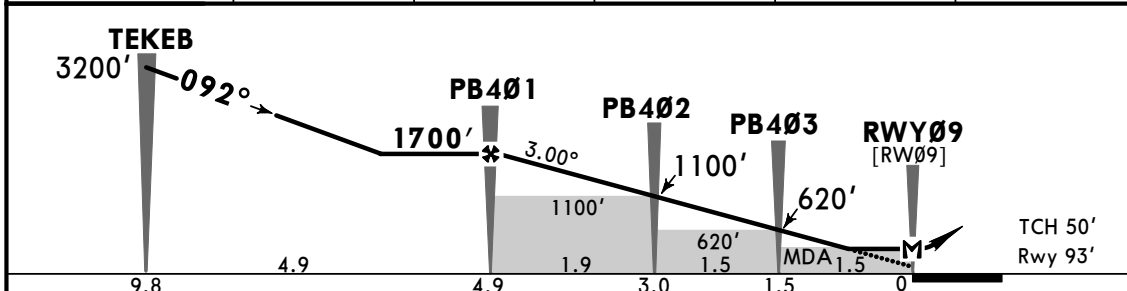
JEPPESEN
19 FEB 21
Eff 25 Feb (12-1)

PUERTO BOLIVAR, COLOMBIA
CAT A, B & C RNP Rwy 09

AWOS-3 132.7		BARRANQUILLA Information 127.5		PORTETE Radio 131.9		
RNAV	Final Apch Crs 092°	PB401 1700' (1607')	LNAV MDA(H) 400' (307')	Apt Elev 93' Rwy 93'		
MISSED APCH: Follow RNP track to OPRAM climbing to 5000'. Missed apch climb gradient mim 4.0%.					TAA 25 NM IAF	
Alt Set: IN (hPa on req)		Trans level: FL 190		Trans alt: 18000'		
RNP Apch						



DIST to THR	5.0	4.0	3.0	2.0	1.0
ALTITUDE	1723'	1407'	1100'	775'	459'



Gnd speed-Kts	70	90	100	120	140	160	PAPI-L	5000' ↑ via RNP track	OPRAM	
Descent Angle	3.00°	372	478	531	637	743				849
MAP at RWY09										
FAF to MAP	4.9	4:12	3:16	2:56	2:27	2:06	1:50			

STRAIGHT-IN LANDING RWY 09				CIRCLE-TO-LAND	
LNAV MDA(H) 400' (307')				Not Authorized to the North	
A				Max Kts	510' (417') - 1900m
B	1600m			135	1040' (947') - 2800m
C	1800m			180	1270' (1177') - 3700m
D	NOT APPLICABLE			D	NOT APPLICABLE

PANS OPS

CHANGES: Procedure title, procedure revised.

© JEPPESEN, 2016, 2021. ALL RIGHTS RESERVED.