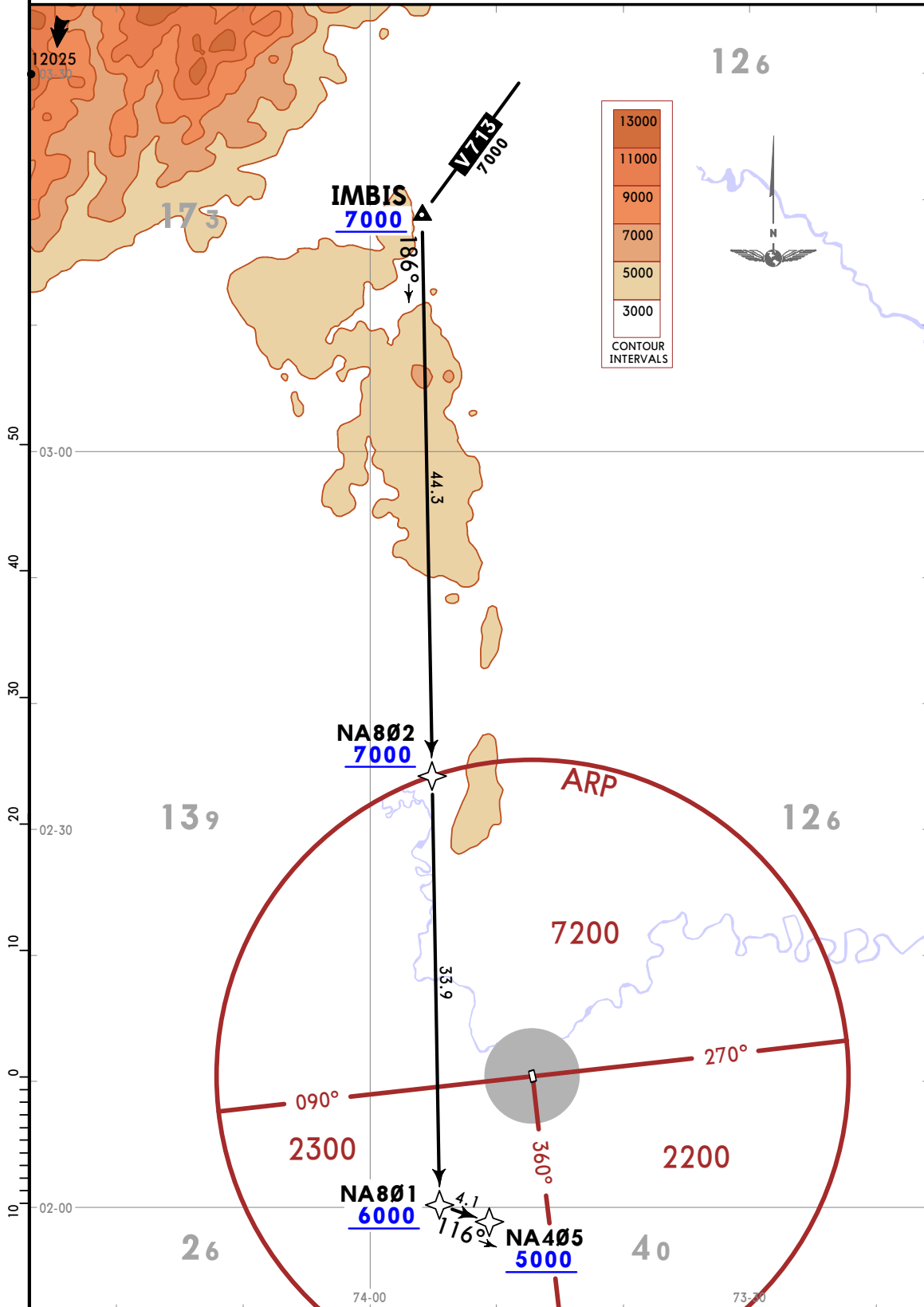


Apt Elev
777

Alt Set: IN (hPa on req) Trans level: FL190
1. RNP1 or RNAV1.
2. GNSS required.

IMBIS 1A [IMBI1A] RNAV (GNSS) ARRIVAL
(RWY 35)

CAT A, B & C



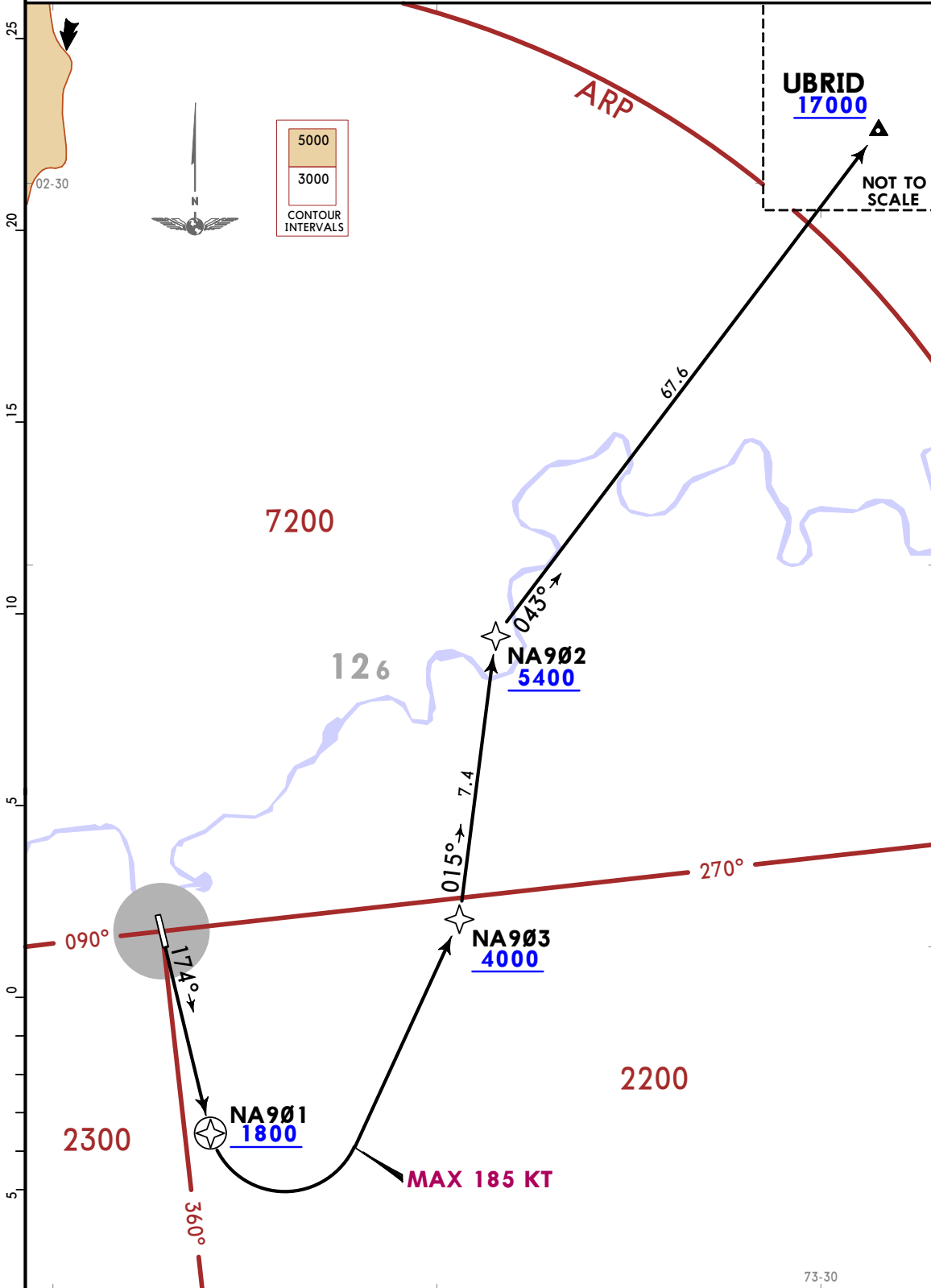
Apt Elev
777

Trans alt: 18000
1. RNP1 or RNAV1.
2. GNSS required.

UBRID 1E [UBRI1E] RNAV (GNSS) DEPARTURE
(RWY 17)

CAT A, B & C

SPEED: MAX 185 KT UNTIL TURN COMPLETE



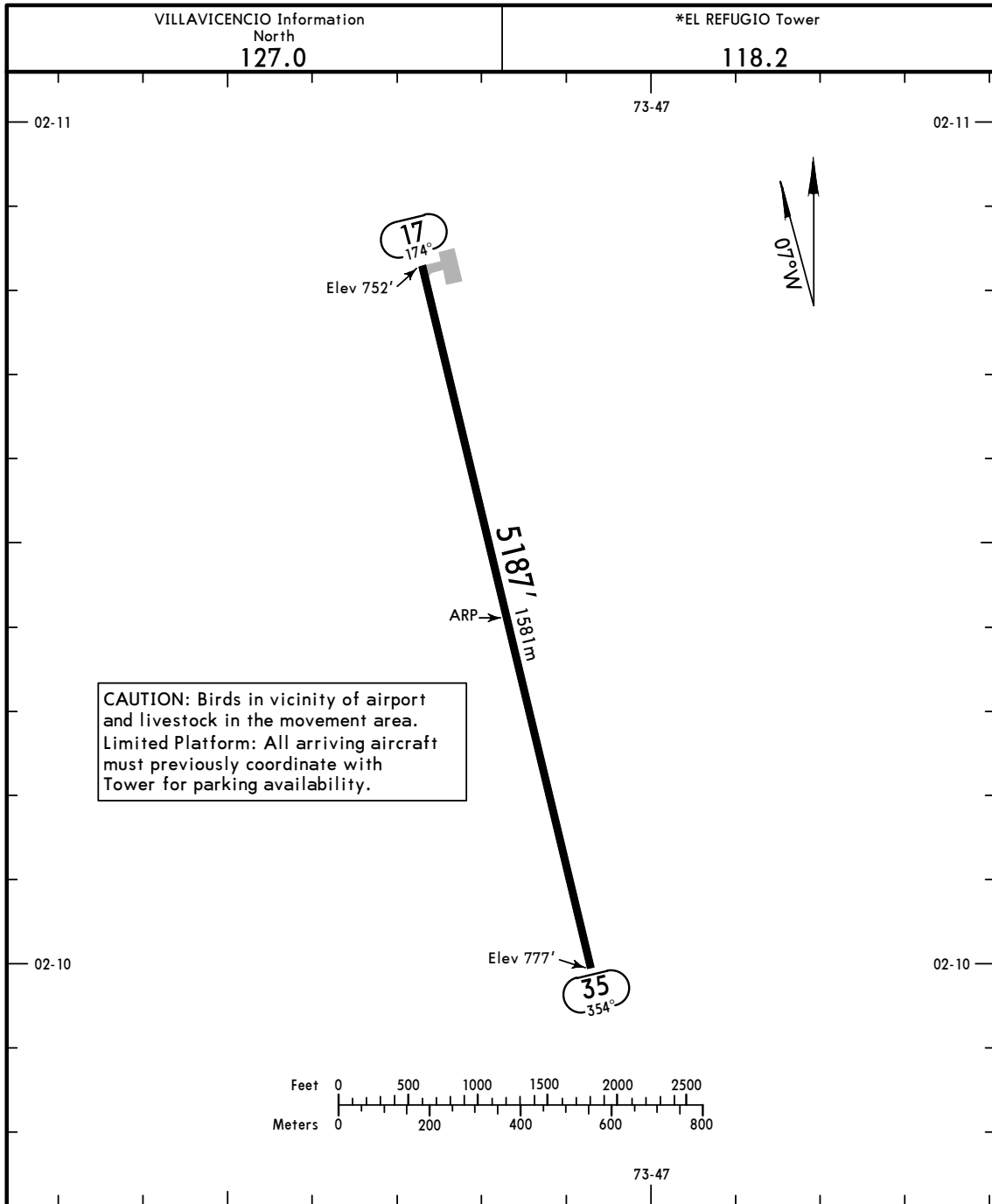
SKNA

Apt Elev 777'
N02 10.4 W073 47.2

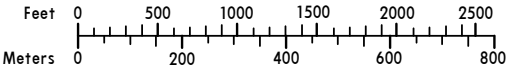
JEPPESEN LA MACARENA, COLOMBIA

19 APR 19 10-9 Eff 25 Apr

EL REFUGIO



CAUTION: Birds in vicinity of airport and livestock in the movement area. Limited Platform: All arriving aircraft must previously coordinate with Tower for parking availability.



ADDITIONAL RUNWAY INFORMATION					
RWY	USABLE LENGTHS	LANDING BEYOND		TAKE-OFF	WIDTH
		Threshold	Glide Slope		
17 35 RL REIL					52' 16m
TAKE-OFF					
All Rwys					
Standard					
1 & 2 Eng			3 & 4 Eng		
1600m			800m		

CHANGES: New chart.

© JEPPESEN, 2019. ALL RIGHTS RESERVED.

SKNA

JEPPESEN

MISSED APCH CLIMB GRADIENT MIM 4.3%

LA MACARENA, COLOMBIA

EL REFUGIO

4 SEP 20

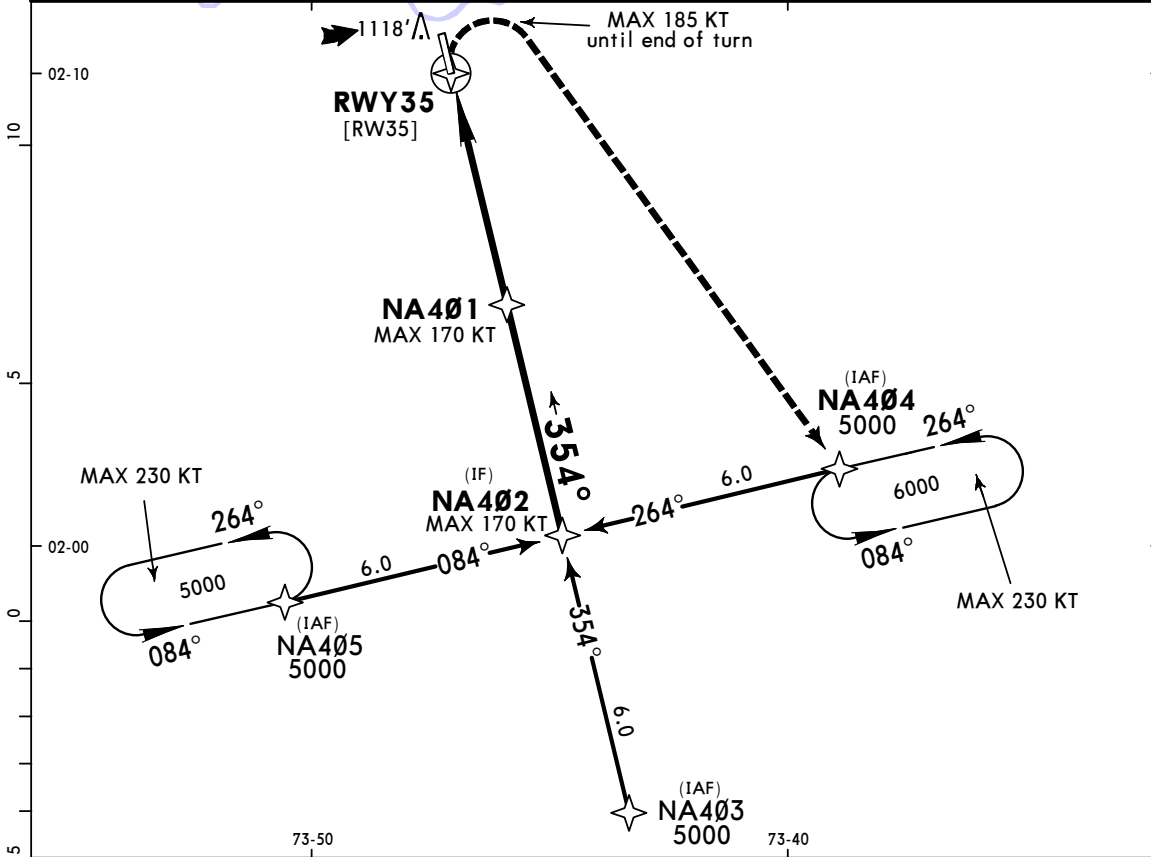
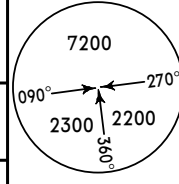
12-1

Eff 10 Sep

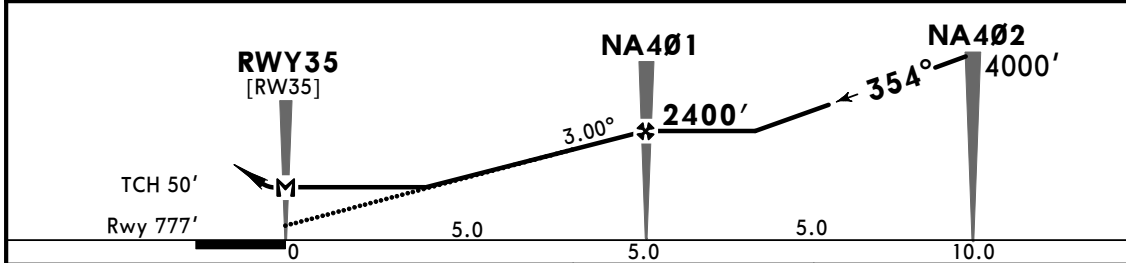
CAT A, B & C

RNP Rwy 35

TORNADO Control 134.0		VILLAVICENCIO Information North 127.0		*EL REFUGIO Tower 118.2	
RNAV	Final Apch Crs 354°	NA401 2400' (1623')	RNAV MDA(H) 1400' (623')	Apt Elev 777' Rwy 777'	
MISSED APCH: Follow RNP track to NA404 climbing to 6000'. MAX 185 KT until end of turn. Missed approach climb gradient Mim 4.3%.					
RNP Apch	Alt Set: INCHES (hPa on req)	Trans level: FL 190		Trans alt: 18000'	
Simultaneously holding procedure at NA405 and NA404 not authorized.					



DIST to THR	1.8	2.0	3.0	4.0	5.0
ALTITUDE	1400'	1460'	1780'	2100'	2410'



Gnd speed-Kts	70	90	100	120	140	160			
Descent Angle 3.00°	372	478	531	637	743	849		REIL	RNP track NA404
MAP at RWY35									

STRAIGHT-IN LANDING RWY 35			CIRCLE-TO-LAND		
RNAV MDA(H) 1400' (623')			Max Kts MDA(H)		
A	3100m		100	1420' (643') -3100m	
B	3300m		135	1800' (1023') -4900m	
C	3300m		180	1860' (1083') -4900m	
D	NOT APPLICABLE		D	NOT APPLICABLE	

PANS OPS

CHANGES: Procedure.

© JEPPESEN, 2019, 2020. ALL RIGHTS RESERVED.