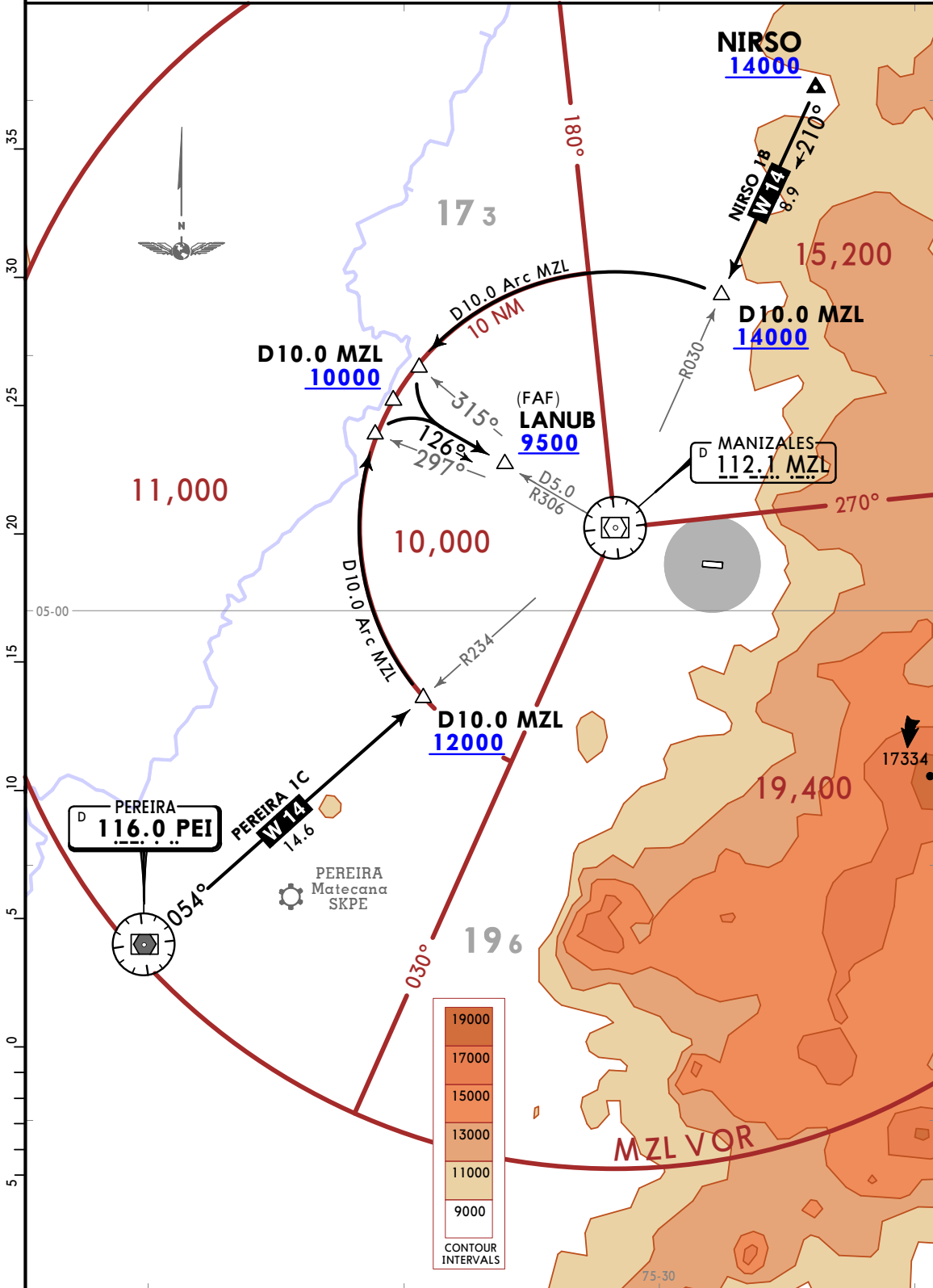


Apt Elev 6945
Alt Set: IN (hPa on req) Trans level: FL190
MZL VOR/DME required.

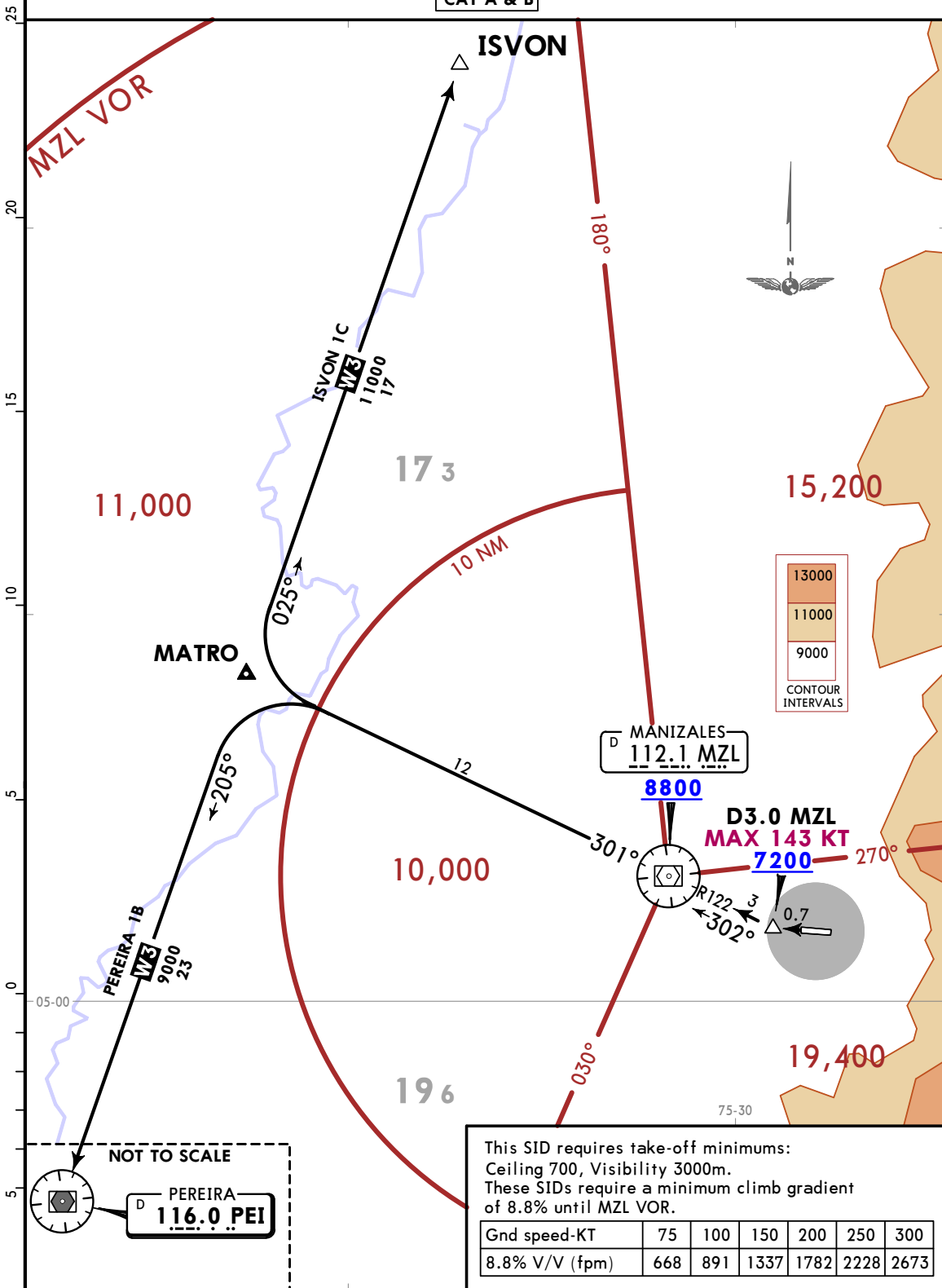
NIRSO 1B [NIRS1B], PEREIRA 1C [PEI1C]
ARRIVALS
(RWY 10)
CAT A & B

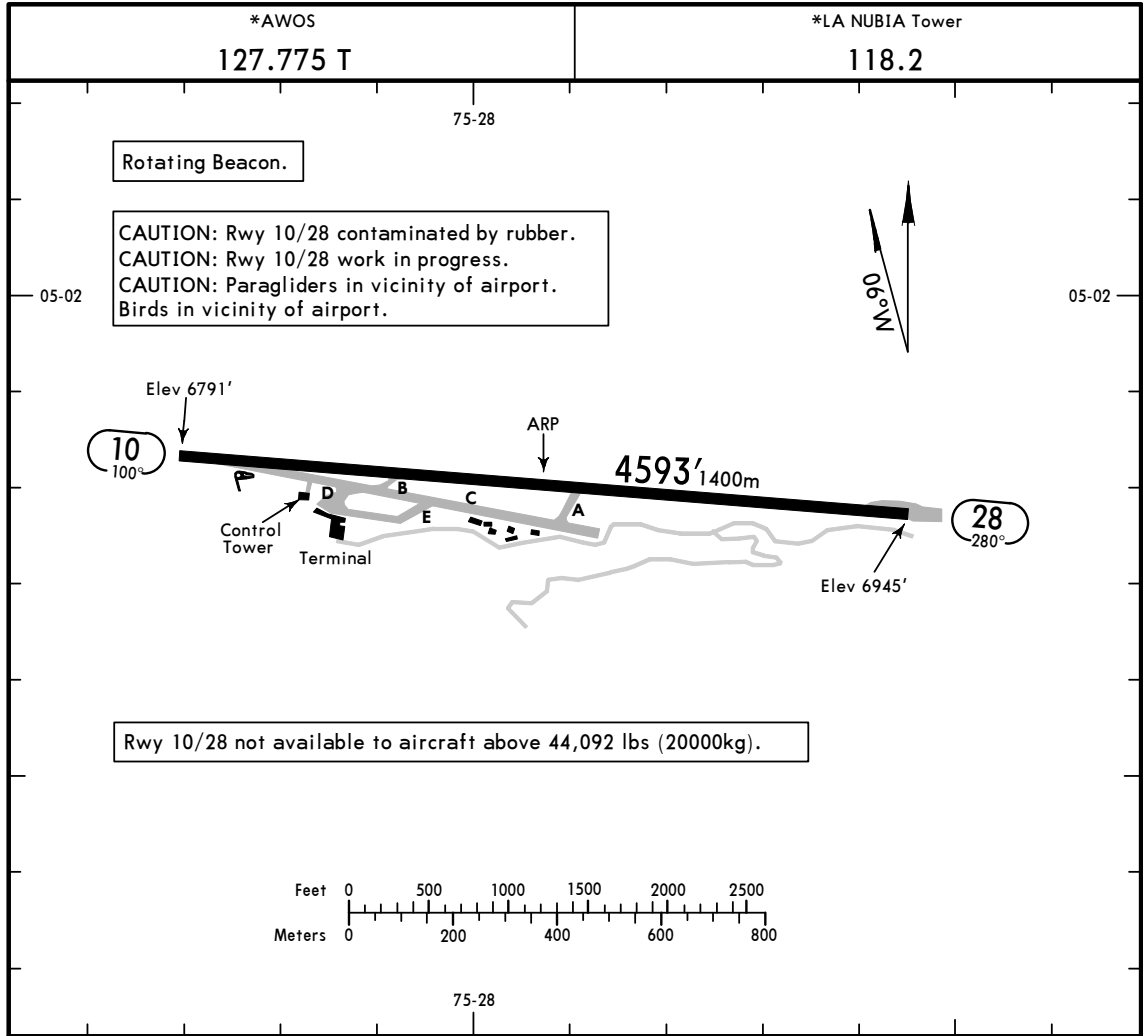


Apt Elev
6945

Trans alt: 18000

ISVON 1C [ISV01C]
PEREIRA 1B [PEI1B]
DEPARTURES
(RWY 28)
CAT A & B





ADDITIONAL RUNWAY INFORMATION

RWY				USABLE LENGTHS		TAKE-OFF	WIDTH
	MIRL	REIL	PAPI-L (angle 2.50°)	Threshold	Glide Slope		
10						①	66'
28	MIRL			②			20m

- ① Take-off not authorized due to obstacles.
- ② Landing not authorized due to obstacles.

TAKE-OFF

	Rwy 28	Rwy 10
1 or More Eng	1600m	NOT APPLICABLE
3 or More Eng	800m	

SKMZ/MZL
LA NUBIA

JEPPESEN

2 OCT 20

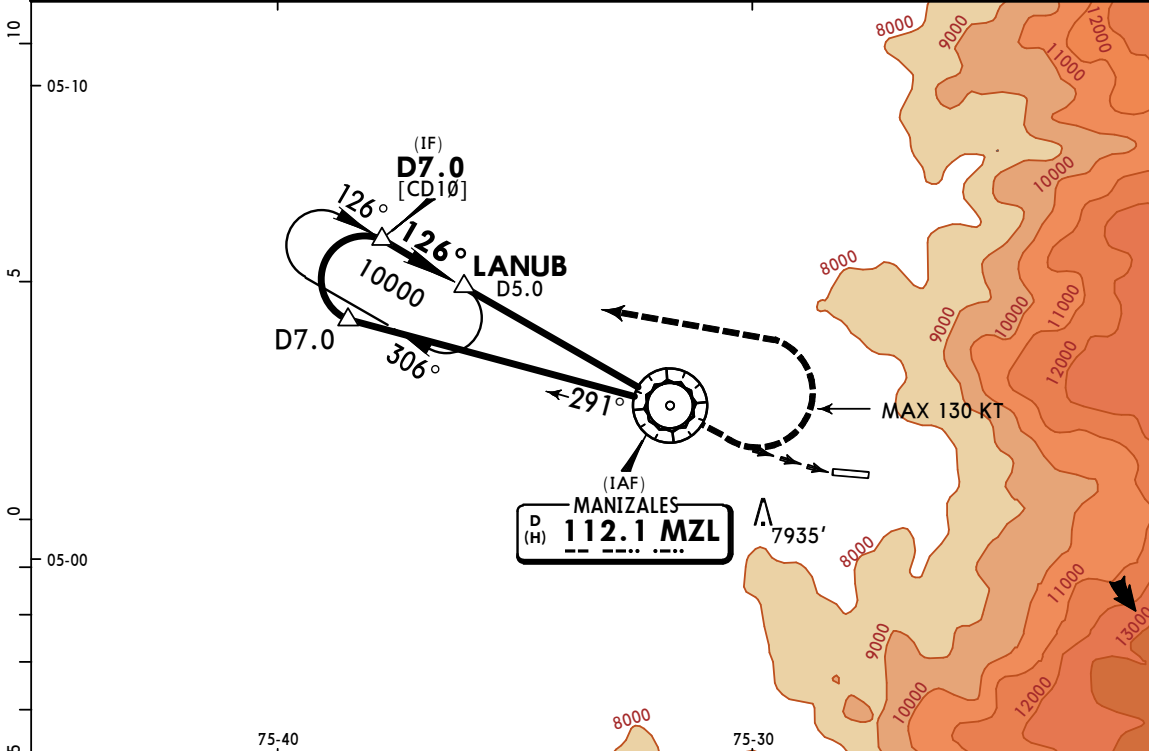
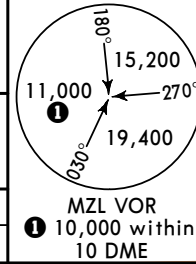
(13-1)

MISSED APCH CLIMB
GRADIENT MIM 3.5%

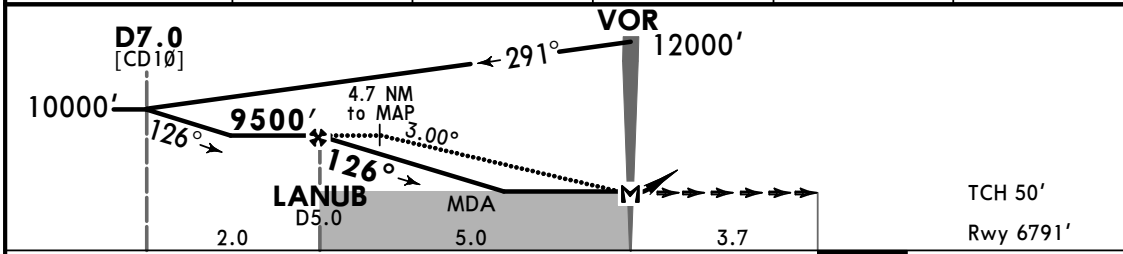
MANIZALES, COLOMBIA
VOR Z Rwy 10

CAT A & B

*AWOS 127.775 T	MEDELLIN Approach 121.1		*PEREIRA Approach 120.7		*LA NUBIA Tower 118.2
VOR MZL 112.1	Final Apch Crs 126°	LANUB 9500' (2709')	MDA(H) 7900' (1109')	Apt Elev 6945' Rwy 6791'	
MISSED APCH: Crossing MZL VOR LEFT turn climbing until LANUB holding pattern to 10000'. Missed Approach Climb Gradient Mim 3.5%.					
Alt Set: INCHES (hPa on req)		Trans level: FL 190		Trans alt: 18000'	
MZL VOR/DME required.					



MZL DME	5.0	4.0	3.0	2.0	1.0
ALTITUDE	9500'	9182'	8864'	8546'	8228'



Gnd speed-Kts	70	90	100	120	140	160	REIL PAPI-L	MZL 112.1	← 10000'	↑ LANUB
Descent Angle 3.00°	372	478	531	637	743	849				
MAP at VOR or LANUB to MAP	5.0	4:17	3:20	3:00	2:30	2:09	1:53			

STRAIGHT-IN LANDING RWY 10				CIRCLE-TO-LAND			
MDA(H) 7900' (1109')							

A	7000m				A				
B					B				
C	NA				C	NA			
D					D				

PANS OPS

CHANGES: REIL added, chart format.

© JEPPESEN, 2014, 2020. ALL RIGHTS RESERVED.

SKMZ/MZL
LA NUBIA

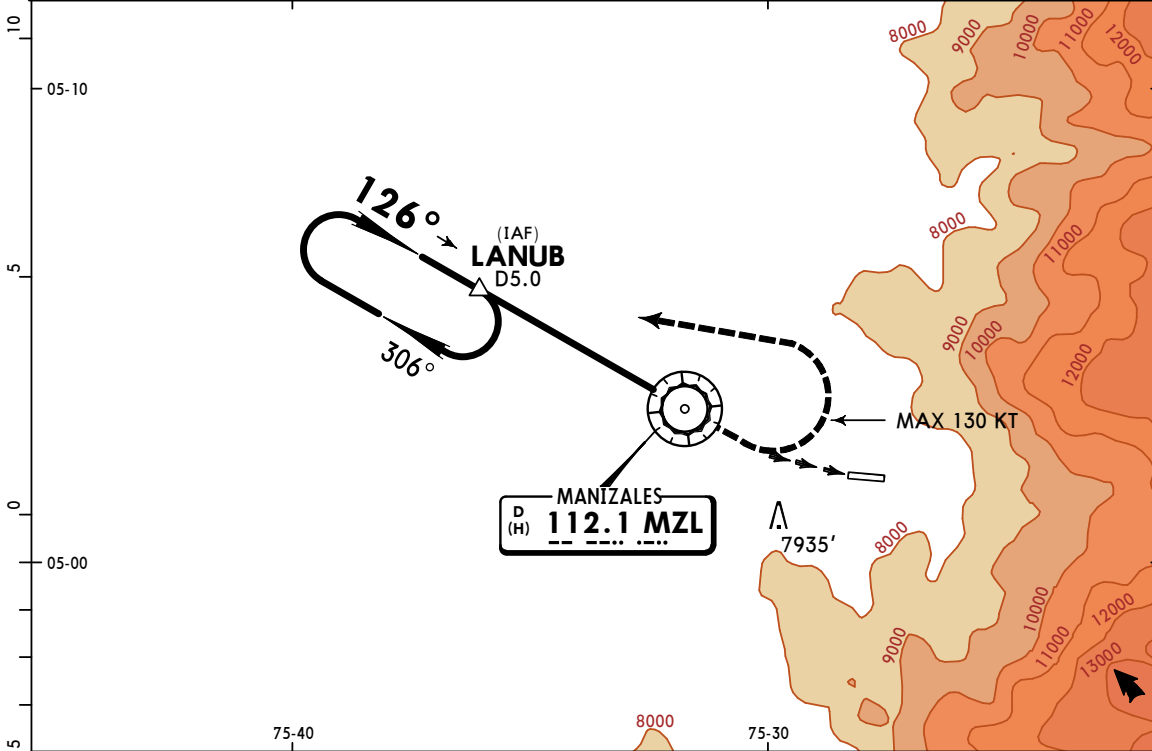
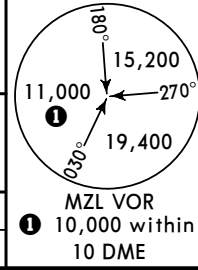


2 OCT 20 (13-2) MISSED APCH CLIMB
GRADIENT MIM 3.5%

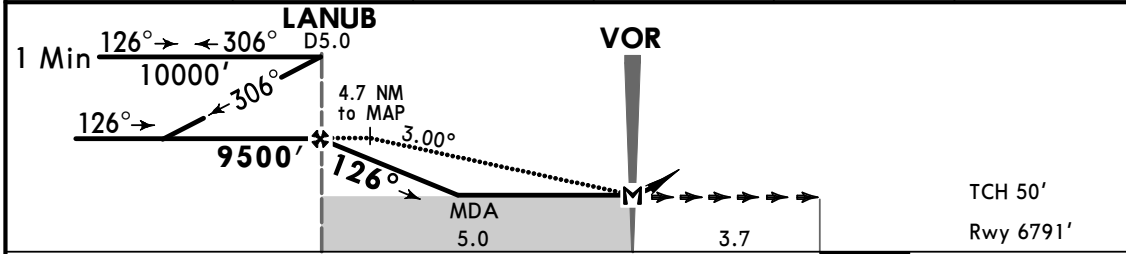
MANIZALES, COLOMBIA
VOR Y Rwy 10

CAT A & B

*AWOS 127.775 T	MEDELLIN Approach 121.1		*PEREIRA Approach 120.7		*LA NUBIA Tower 118.2
VOR MZL 112.1	Final Apch Crs 126°	LANUB 9500' (2709')	MDA(H) 7900' (1109')	Apt Elev 6945' Rwy 6791'	
MISSED APCH: Crossing MZL VOR LEFT turn climbing until LANUB holding pattern to 10000'. Missed Approach Climb Gradient Mim 3.5%.					
Alt Set: INCHES (hPa on req)		Trans level: FL 190		Trans alt: 18000'	
MZL VOR/DME required.					



MZL DME	5.0	4.0	3.0	2.0	1.0
ALTITUDE	9500'	9182'	8864'	8546'	8228'



Gnd speed-Kts	70	90	100	120	140	160	REIL PAPI-L	MZL 112.1	LT	10000'	LANUB
Descent Angle 3.00°	372	478	531	637	743	849					
MAP at VOR or LANUB to MAP	5.0	4:17	3:20	3:00	2:30	2:09					

STRAIGHT-IN LANDING RWY 10						CIRCLE-TO-LAND					
MDA(H) 7900' (1109')											

A	7000m						A	NA					
B							B						
C	NA						C						
D							D						

PANS OPS

CHANGES: REIL added, chart format.

© JEPPESEN, 2013, 2020. ALL RIGHTS RESERVED.