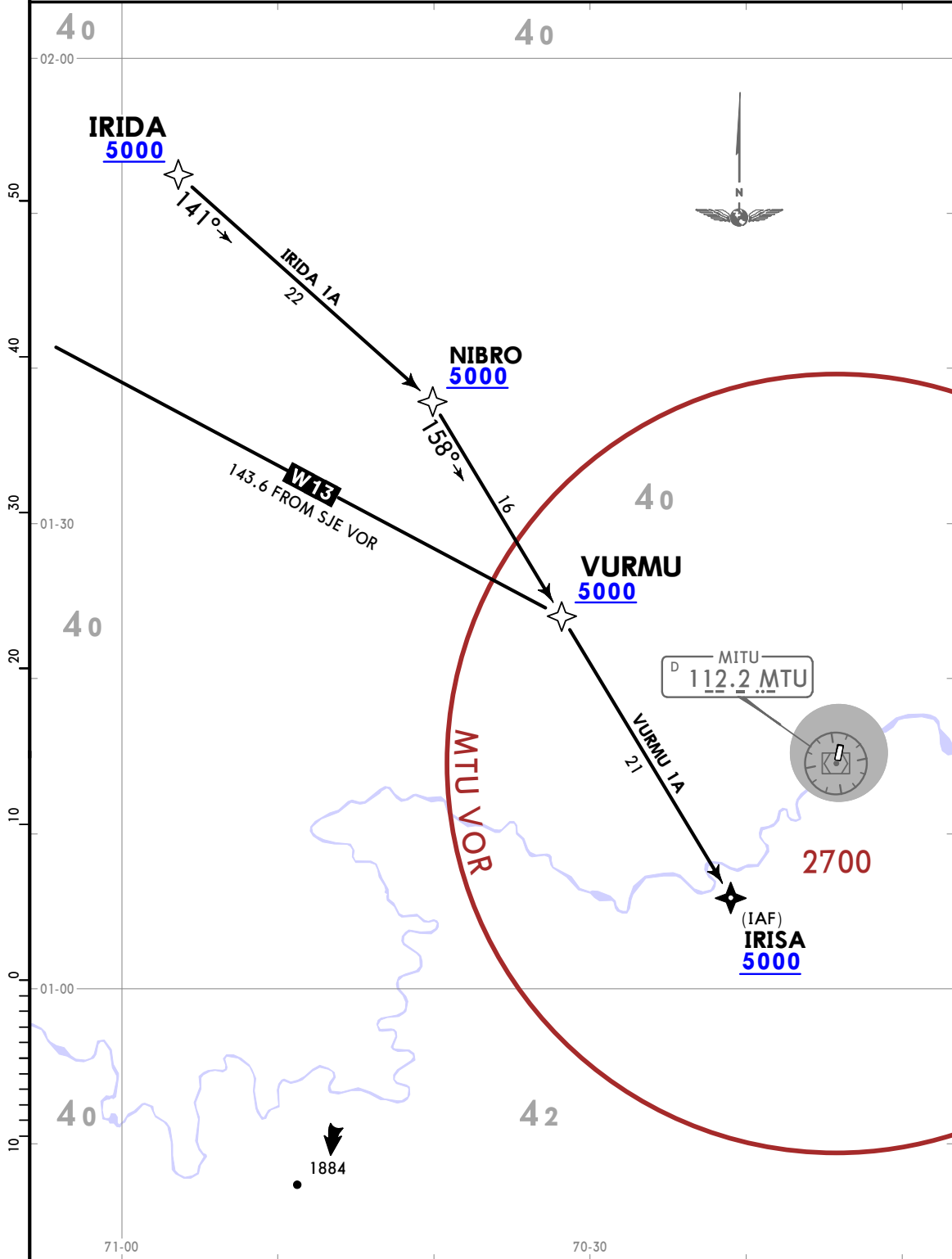


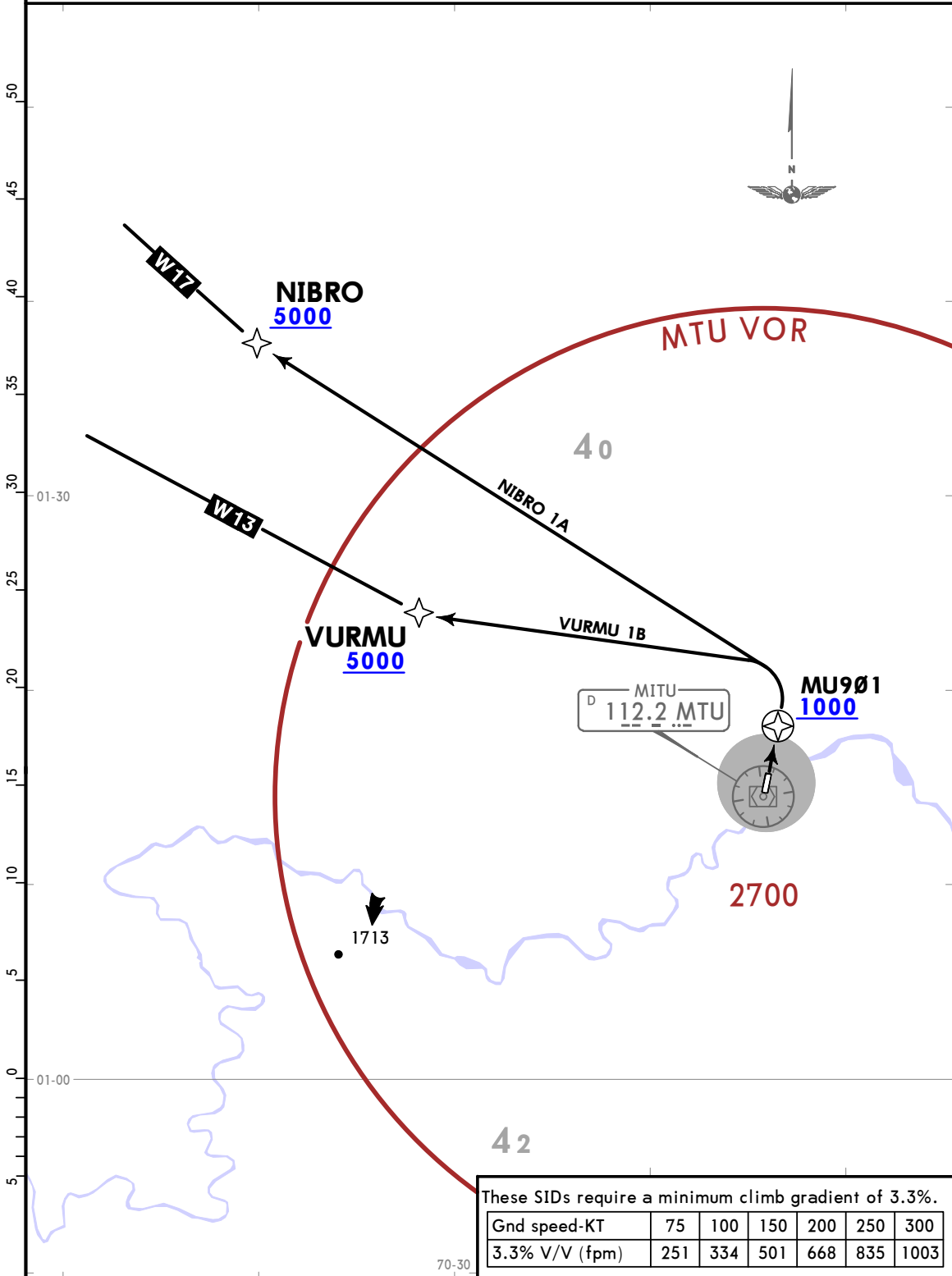
Apt Elev 680	Alt Set: hPa (IN on req) Trans level: FL190
	RNP 1 or RNAV 1 certification required GNSS required

**IRIDA 1A [IRID1A]
VURMU 1A [VURM1A]
RNAV (GNSS) ARRIVALS
(RWY 02)**
CAT A, B & C

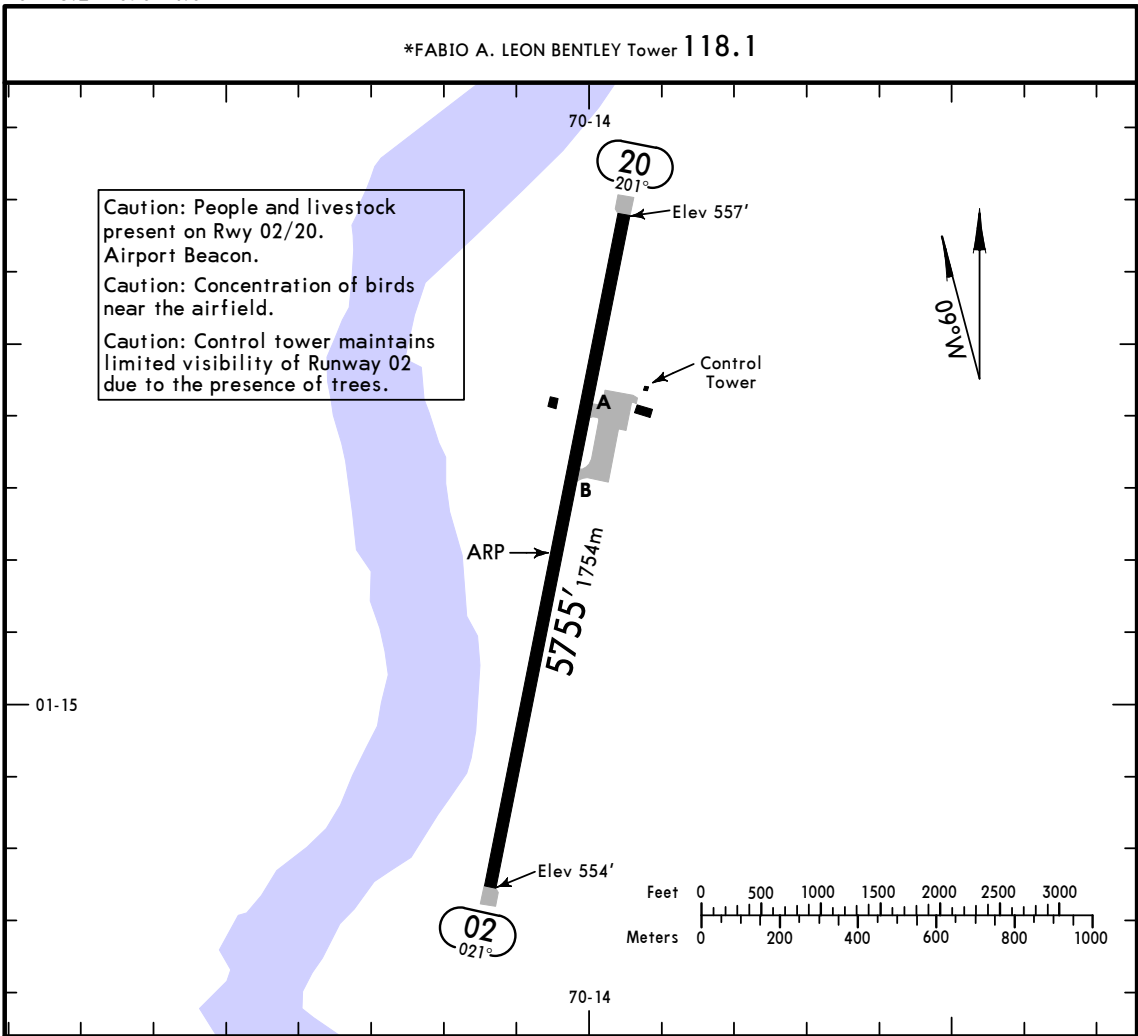


Apt Elev 680	Trans alt: 18000 RNP 1 or RNAV 1 certification required GNSS required
-----------------	-----------------------------------------------------------------------------

NIBRO 1A [NIBR1A]
VURMU 1B [VURM1B]
RNAV (GNSS) DEPARTURES
(RWY 02)
CAT A, B & C



*FABIO A. LEON BENTLEY Tower 118.1



ADDITIONAL RUNWAY INFORMATION

RWY		USABLE LENGTHS			WIDTH
		Threshold	Landing Beyond Glide Slope	TAKE-OFF	
02	RL PAPI-L (angle 3.0°)				98' 30m
20	RL APAPI-L (angle 3.0°)				

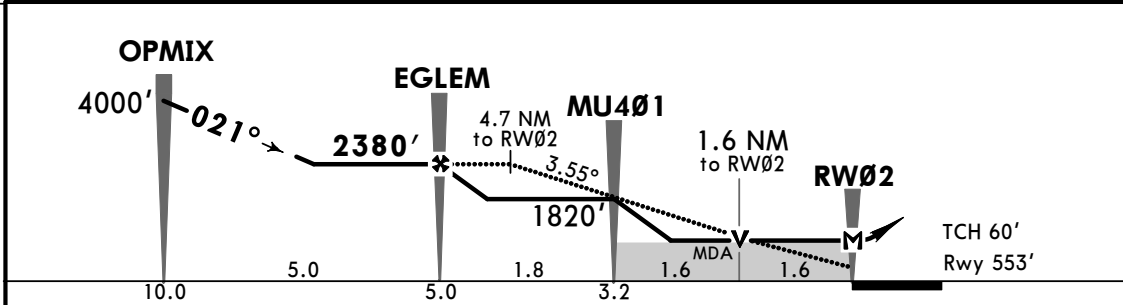
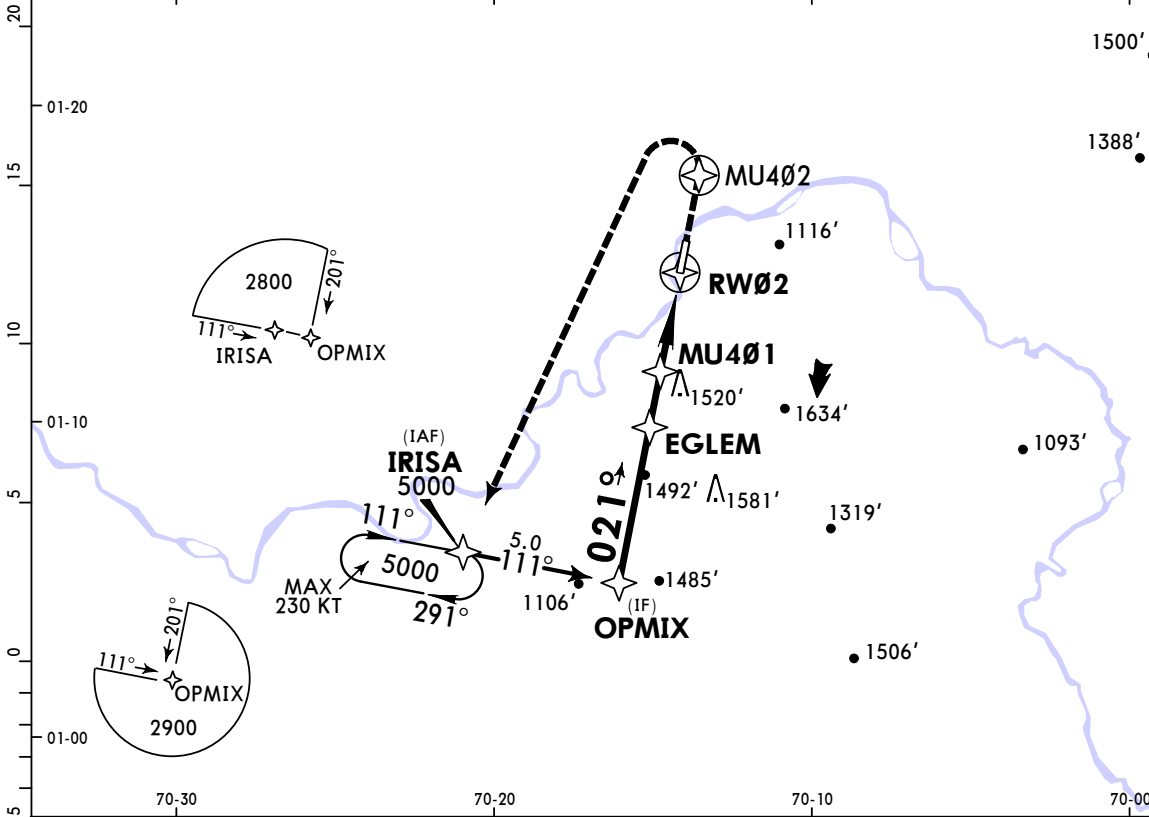
TAKE-OFF

	VOR Rwy 20
A	600' - 2900m
B	
C	NOT APPLICABLE
D	

*FABIO A. LEON BENTLEY Tower 118.1

BRIEFING STRIP™	RNAV	Final Apch Crs 021°	EGLEM 2380' (1827')	LNAV MDA(H) 1200' (647')	Apt Elev 680' Rwy 553'	TAA 25 NM IAF
	MISSED APCH: Climb on runway heading until MU402 and 1500', then turn LEFT (Max IAS 185 KT until end of turn) climbing to IRISA holding pattern at 5000'.					
	RNP Apch	Alt Set: IN (hPa on req)	Trans level: FL 190	Trans alt: 18000'		

PAPI and descent angle are not coincident.



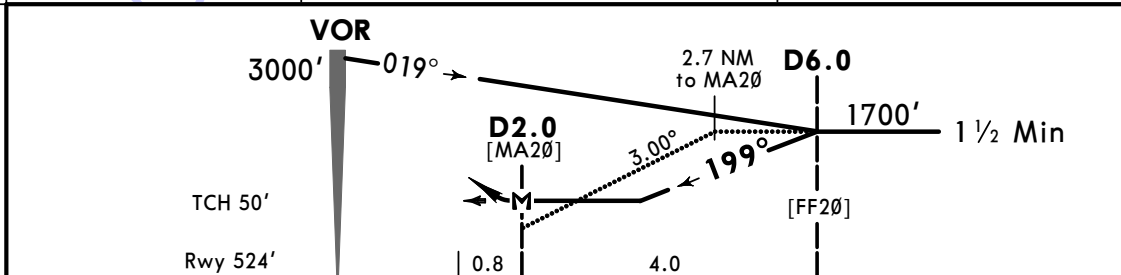
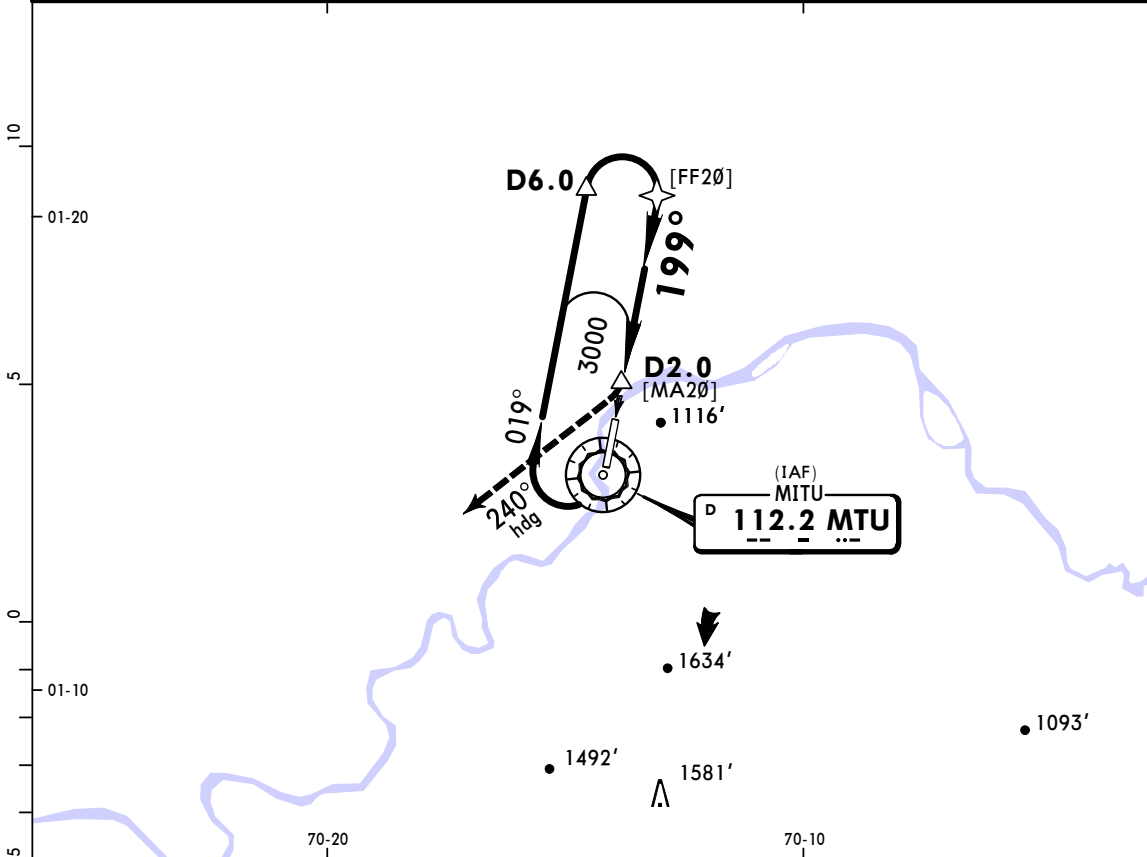
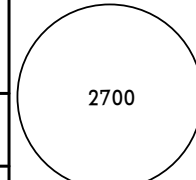
Gnd speed-Kts	70	90	100	120	140	160	APAPI-L	1500' ↑ on Rwy hdg
Descent Angle	3.55°	440	565	628	754	880		
MAP at RW02	5.0	4:17	3:20	3:00	2:30	2:09		
EGLEM to MAP	5.0	4:17	3:20	3:00	2:30	2:09	1:53	

PANS OPS	STRAIGHT-IN LANDING RWY02				CIRCLE-TO-LAND			
	LNAV MDA(H) 1200' (647')				Max Kts			
	A	3200m			100	1330' (650') - 3200m		
	B	3400m			135	1910' (1230') - 5000m		
	C	NOT APPLICABLE			180	NOT APPLICABLE		
D	NOT APPLICABLE			D	NOT APPLICABLE			

*FABIO A. LEON BENTLEY Tower 118.1

BRIEFING STRIP™

VOR MTU 112.2	Final Apch Crs 199°	No FAF	MDA(H) 1280' (756')	Apt Elev 680' Rwy 524'
MISSED APCH: Turn RIGHT on 240° heading climbing until 2000', then proceed to join holding pattern at 3000'.				
Alt Set: IN (hPa on req)		Trans level: FL 190		Trans alt: 18000'
DME required.				MSA MTU VOR



Gnd speed-Kts	70	90	100	120	140	160	APAPI-L	2000' on RT 240° hdg
Descent Angle 3.00°	372	478	531	637	743	849		
MAP at D2.0								

STRAIGHT-IN LANDING RWY 20		CIRCLE-TO-LAND	
MDA(H) 1280' (756')		MDA(H) _____	
A	2900m	Max Kts 100	1280' (600') - 2900m
B		135	
C	NOT APPLICABLE	C	NOT APPLICABLE
D		D	

PANS OPS