

SKMO
MORELLA

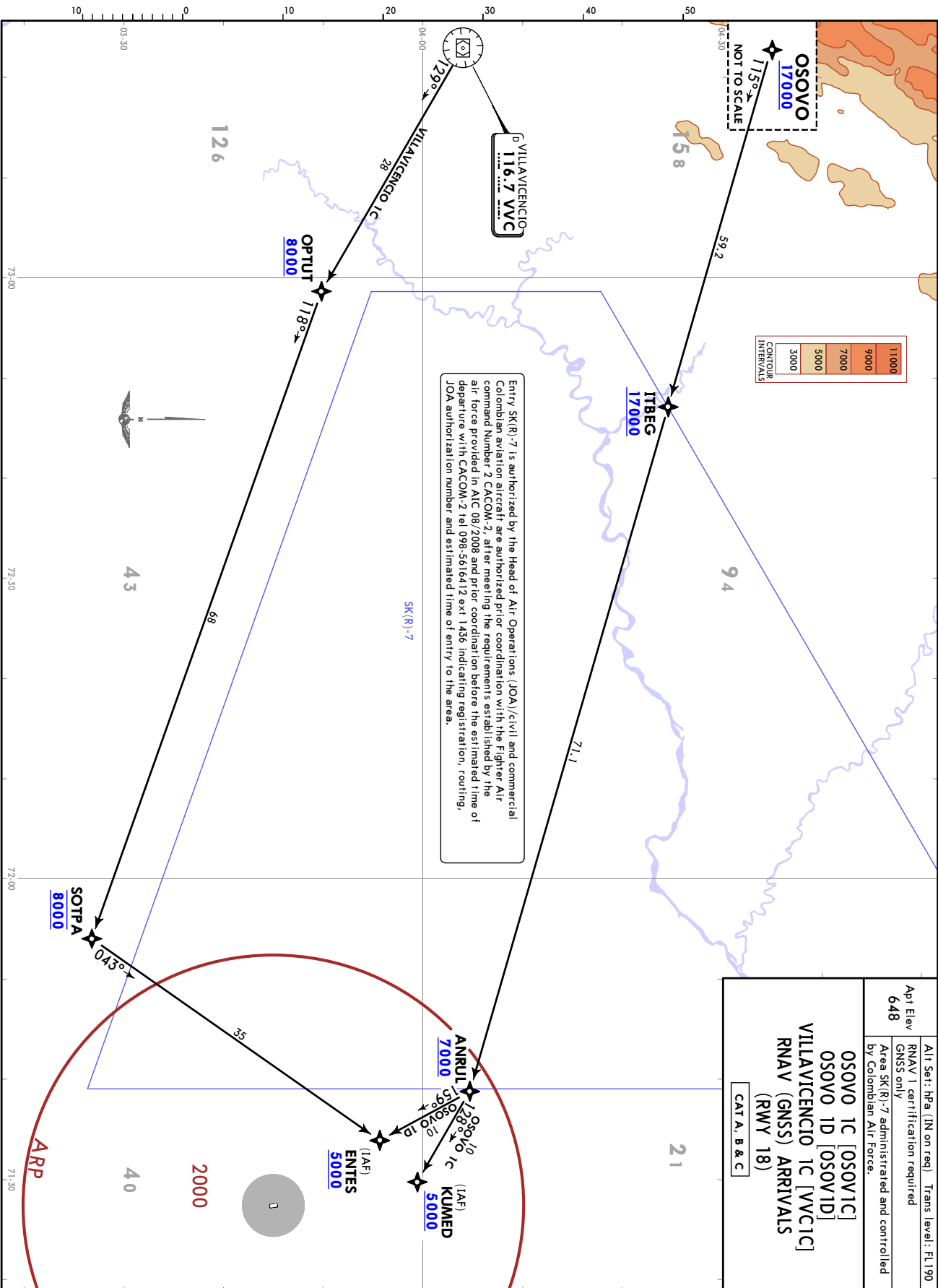
JEPPESEN
PUERTO GAITAN,
COLOMBIA
RNAV STAR

3 SEP 21 (10-2)

Alt Set: hPa (N on req) Trans Level: Ft 190
RNAV 1 certification required
GNSS only

Apt Elev
648
Area SK(R)-7 administered and controlled
by Colombian Air Force.

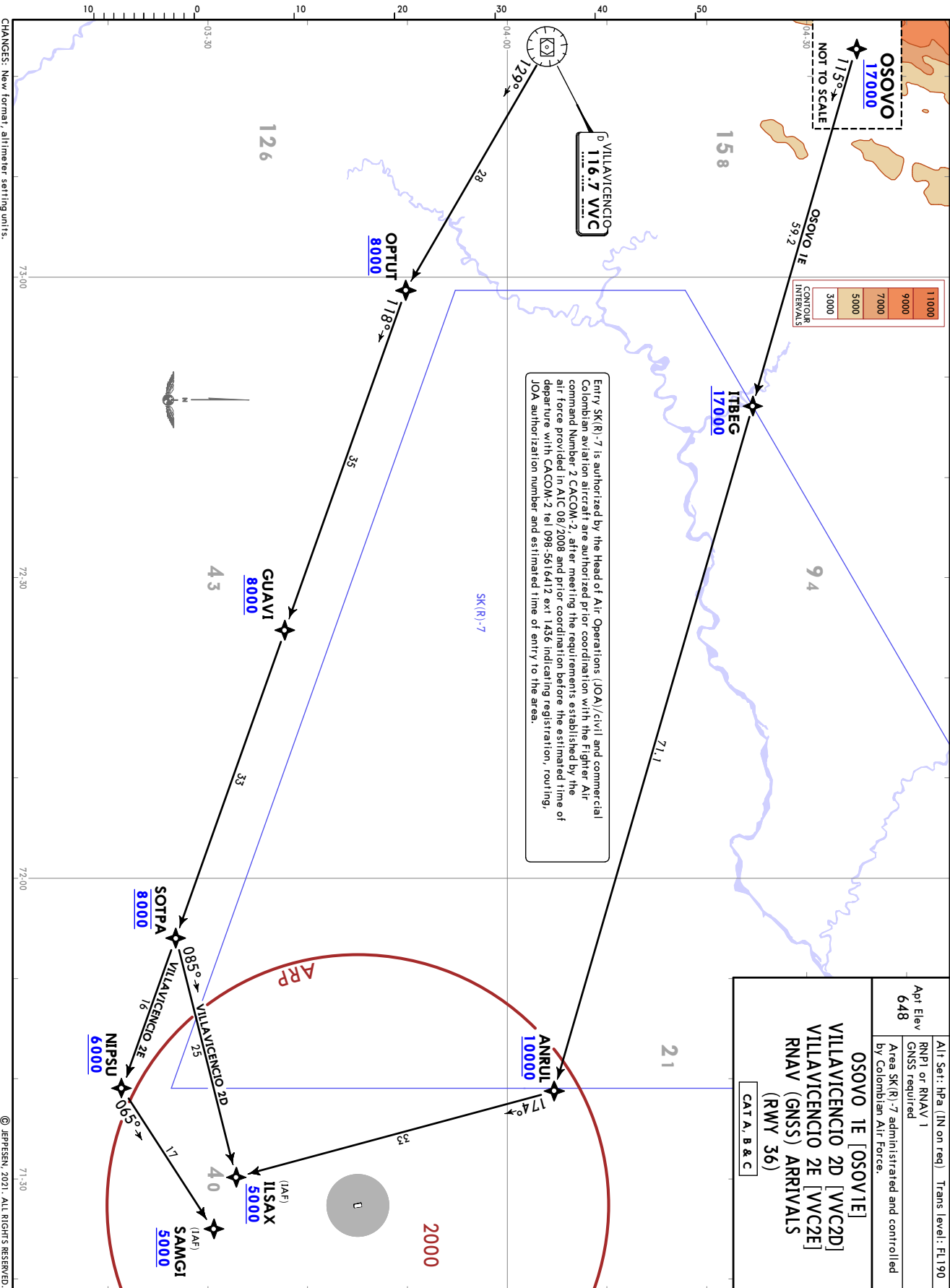
OSOVO 1C [OSOV1C]
OSOVO 1D [OSOV1D]
VILLAVICENCIO 1C [VVIC1C]
RNAV (GNSS) ARRIVALS
(RWY 18)
CAT A, B & C



Entry SK(R)-7 is authorized by the Head of Air Operations (JOA)/civil and commercial Colombian aviation aircraft are authorized prior coordination with the Fighter Air Command Number 2 CACOM-2, after meeting the requirements established by the air force provided in AIC 08/2008 and prior coordination before the estimated time of departure with CACOM-2 tel 098-5616412 ext 1456, indicating registration, routing, JOA authorization number and estimated time of entry to the area.

Apt Elev 648	Alt Set: hPa (IN on req)	Trans level: FL 190
RNAV or RNAV 1 GNSS required	Area SK(R)-7 administered and controlled by Colombian Air Force.	

OSOVO 1E [OSOV1E]
VILLAVIGENCIO 2D [VWC2D]
VILLAVIGENCIO 2E [VWC2E]
RNAV (GNSS) ARRIVALS
(RWY 36)
CAT A, B & C



CHANGES: New format, altimeter setting units. © JEPPESEN, 2021. ALL RIGHTS RESERVED.

SKMO
MORELIA

JEPPESEN
PUERTO GAITAN,
COLOMBIA
RNAV SID

3 SEP 21 (10-3)

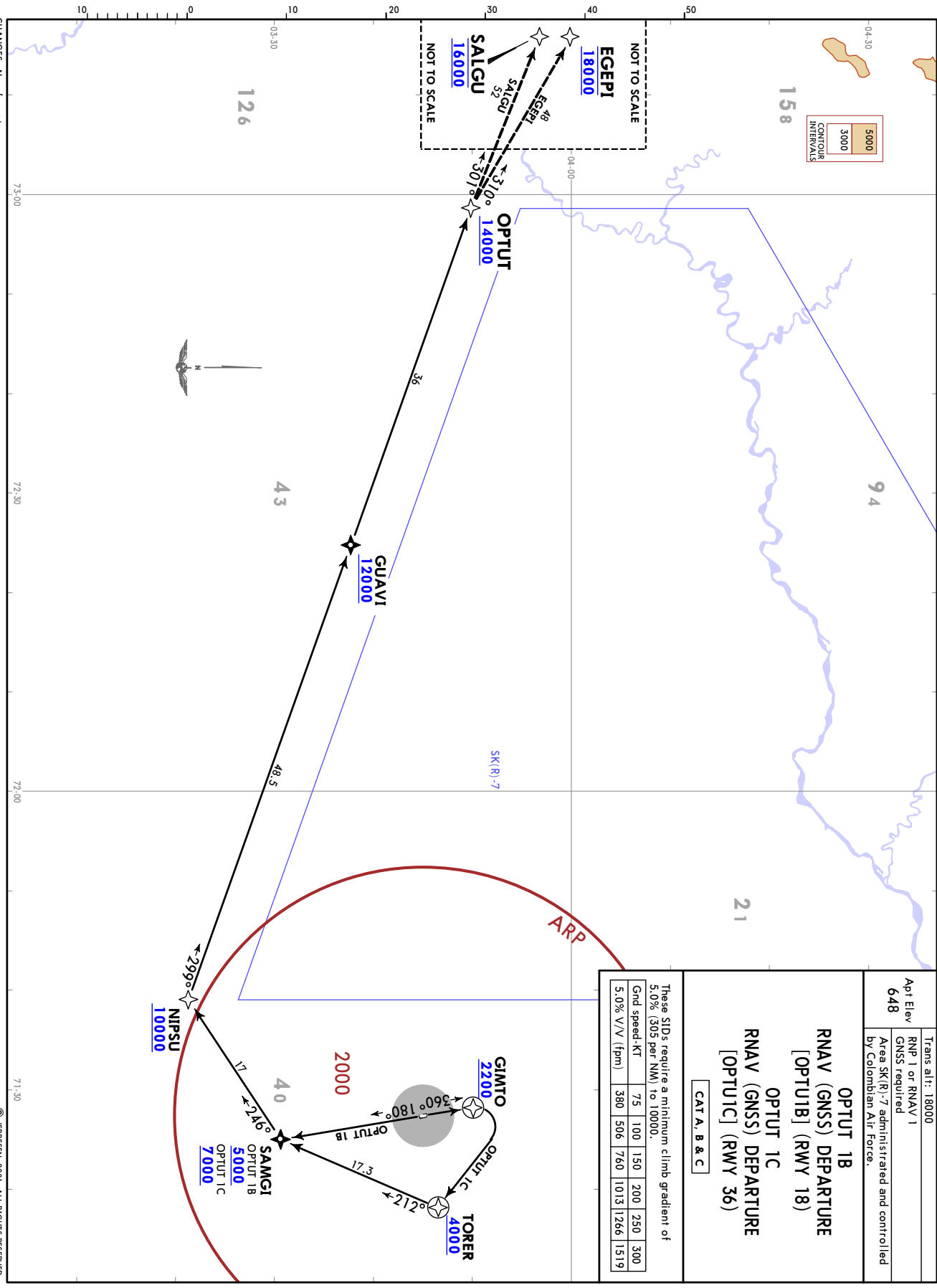
Trans alt: 18000
Apt Elev
648
RNP 1 or RNAV 1
GNSS required
Area SK(R)-7 administered and controlled
by Colombian Air Force.

OPTUT 1B
RNAV (GNSS) DEPARTURE
[OPTUT1B] (RWY 18)
OPTUT 1C
RNAV (GNSS) DEPARTURE
[OPTUT1C] (RWY 36)

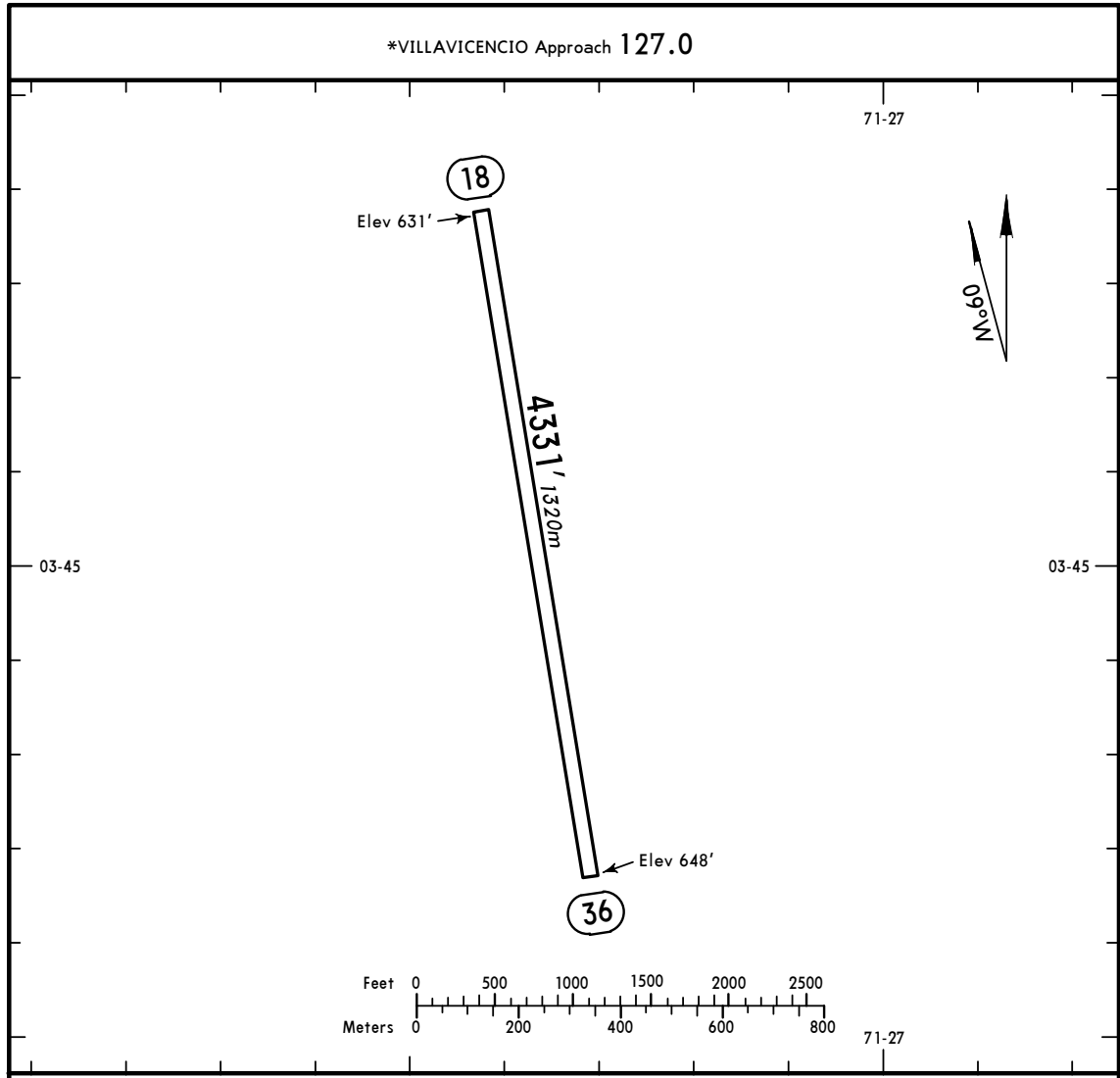
CAT A, B & C

These SIDs require a minimum climb gradient of 5.0% (305 per NM) to 10000.

Gnd speed-KT	75	100	150	200	250	300
5.0% V/V (fpm)	380	506	760	1013	1266	1519



*VILLAVICENCIO Approach 127.0



ADDITIONAL RUNWAY INFORMATION

RWY	USABLE LENGTHS			WIDTH
	Threshold	Landing Beyond Glide Slope	TAKE-OFF	
18 36				98' 30m

	TAKE-OFF	
	All Rwys	

1 or More Eng	1600m	
	800m	

SKMO
MORELIA

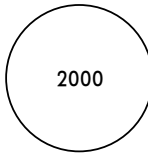
JEPPESEN MISSED APCH CLIMB GRADIENT MIM 3.0%
25 DEC 20 (12-1) Eff 31 Dec

PUERTO GAITAN, COLOMBIA
CAT A, B & C RNP Rwy 18

*VILLAVICENCIO Approach 127.0

BRIEFING STRIP™

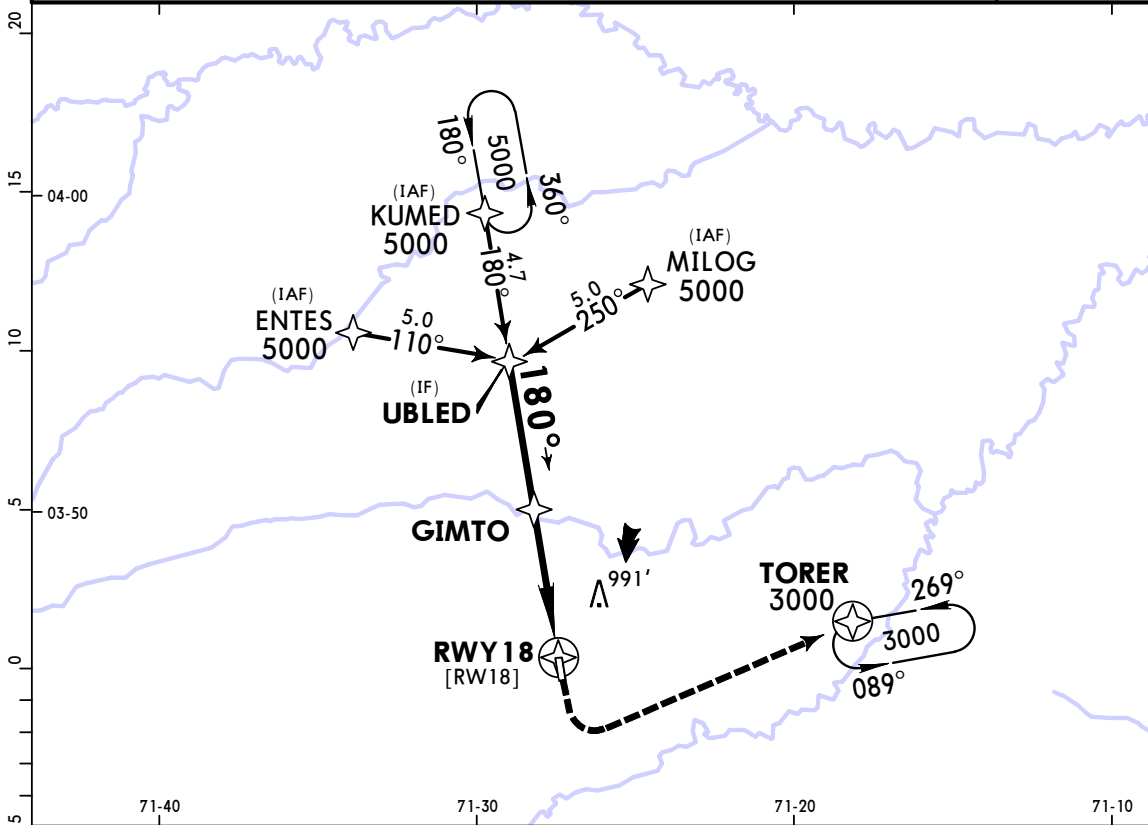
RNAV	Final Apch Crs 180°	GIMTO 2200' (1569')	LNAV MDA(H) 1120' (489')	Apt Elev 648' Rwy 631'
------	-------------------------------	-------------------------------	---------------------------------------	---------------------------



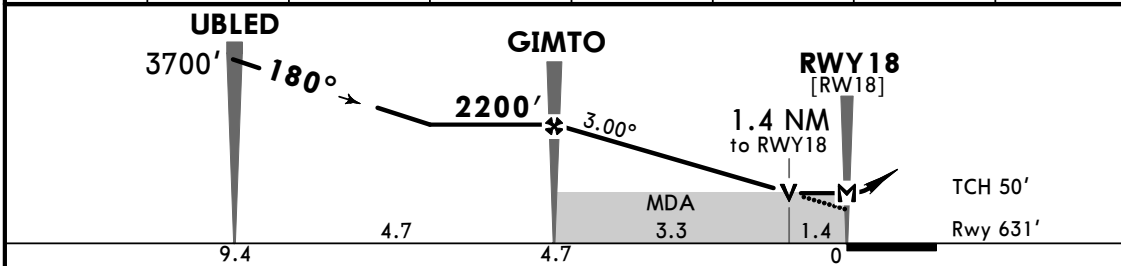
MISSED APCH: Turn LEFT climbing to TORER holding pattern at 3000'.
Missed approach requires a minimum climb gradient of 3.0%.

RNP Apch	Alt Set: IN (hPa on req)	Trans level: FL 190	Trans alt: 18000'
1. Authorization required. 2. Turns prohibited before MAP. 3. MAX 185 KT.			

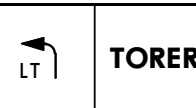
MSA ARP



DIST to THR	7.0	6.0	5.0	4.0	3.0	2.0	1.4
ALTITUDE	2909'	2591'	2273'	1955'	1636'	1318'	1120'



Gnd speed-Kts	70	90	100	120	140	160	
Descent Angle 3.00°	372	478	531	637	743	849	
MAP at RWY18 or FAF to MAP	4.7	4:02	3:08	2:49	2:21	2:01	1:46



STRAIGHT-IN LANDING RWY 18		CIRCLE-TO-LAND	
LNAV		MDA(H)	
A	2400m	100	1290' (642') - 3700m
B		135	
C	2800m	180	1390' (742') - 4600m
D	NOT APPLICABLE	D	NOT APPLICABLE

PANS OPS

CHANGES: Proc ident, brgs, note, chart format.

© JEPPESEN, 2014, 2020. ALL RIGHTS RESERVED.

SKMO
MORELIA

JEPPESEN
25 DEC 20 (12-2) Eff 31 Dec

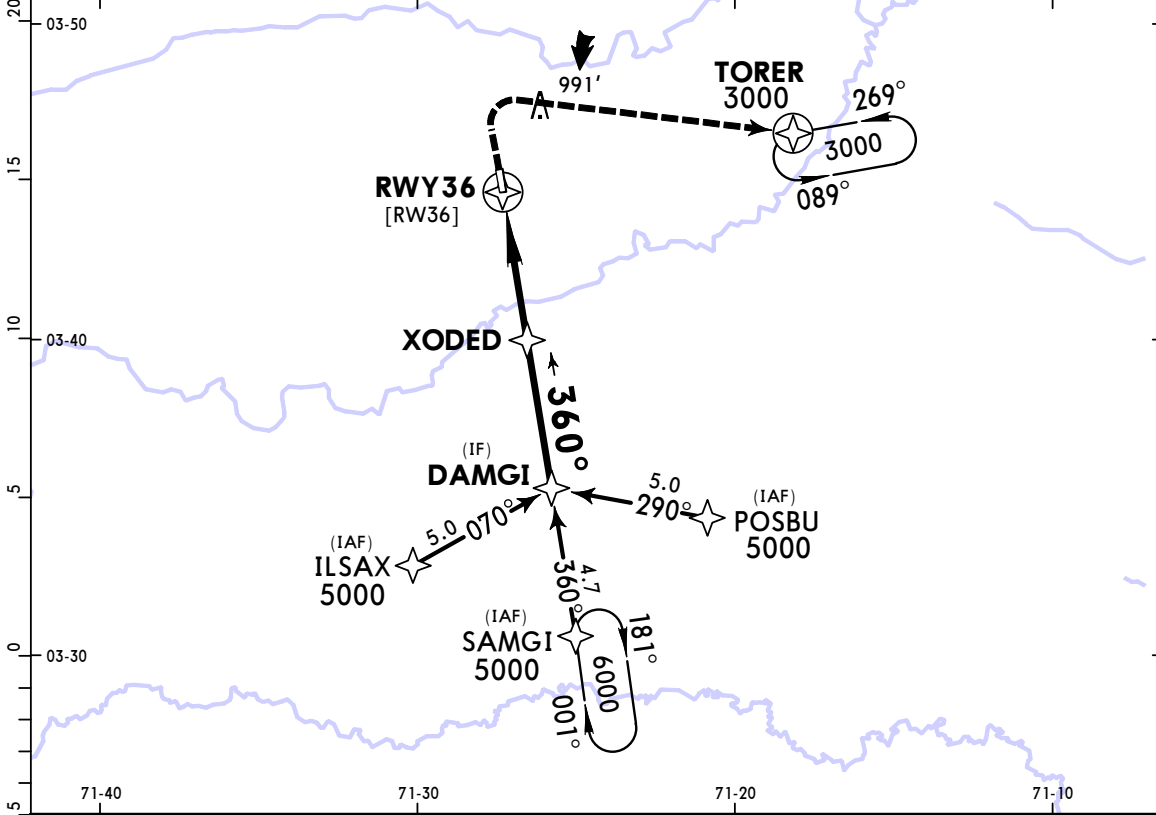
MISSED APCH CLIMB
GRADIENT MIM 3.0%

PUERTO GAITAN, COLOMBIA
CAT A, B & C RNP Rwy 36

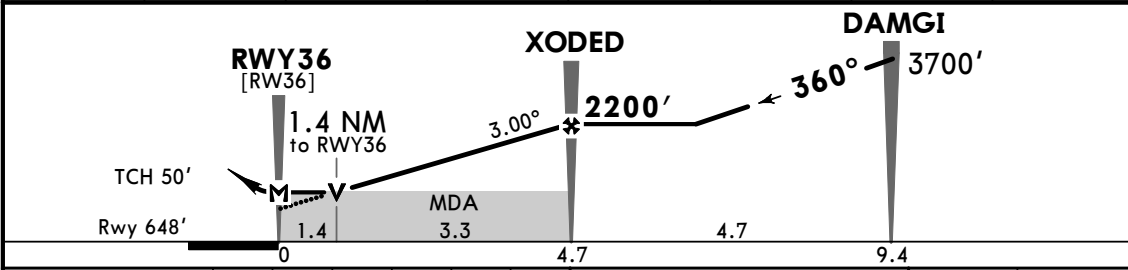
*VILLAVICENCIO Approach 127.0

BRIEFING STRIP™

RNAV	Final Apch Crs 360°	XODED 2200' (1552')	LNAV MDA(H) 1160' (512')	Apt Elev 648' Rwy 648'	2000 MSA ARP
MISSED APCH: Turn RIGHT climbing to TORER holding pattern at 3000'. Missed approach requires a minimum climb gradient of 3.0%.					
RNP Apch	Alt Set: IN (hPa on req)	Trans level: FL 190	Trans alt: 18000'		
1. Authorization required. 2. MAX 185 KT.					



DIST to THR	1.4	2.0	3.0	4.0	5.0	6.0	7.0
ALTITUDE	1160'	1335'	1653'	1971'	2290'	2608'	2927'



Gnd speed-Kts	70	90	100	120	140	160	TORER RT
Descent Angle 3.00°	372	478	531	637	743	849	
MAP at RWY36 or FAF to MAP	4.7	4:02	3:08	2:49	2:21	2:01	

STRAIGHT-IN LANDING RWY 36			CIRCLE-TO-LAND		
LNAV MDA(H) 1160' (512')			MDA(H) _____		
A	2400m	100	1290' (642') -3700m		
B		135			
C	2800m	180	1390' (742') -4600m		
D	NOT APPLICABLE	D	NOT APPLICABLE		

PANS OPS

CHANGES: Proc ident, brgs, note, chart format.

© JEPPESEN, 2014, 2020. ALL RIGHTS RESERVED.