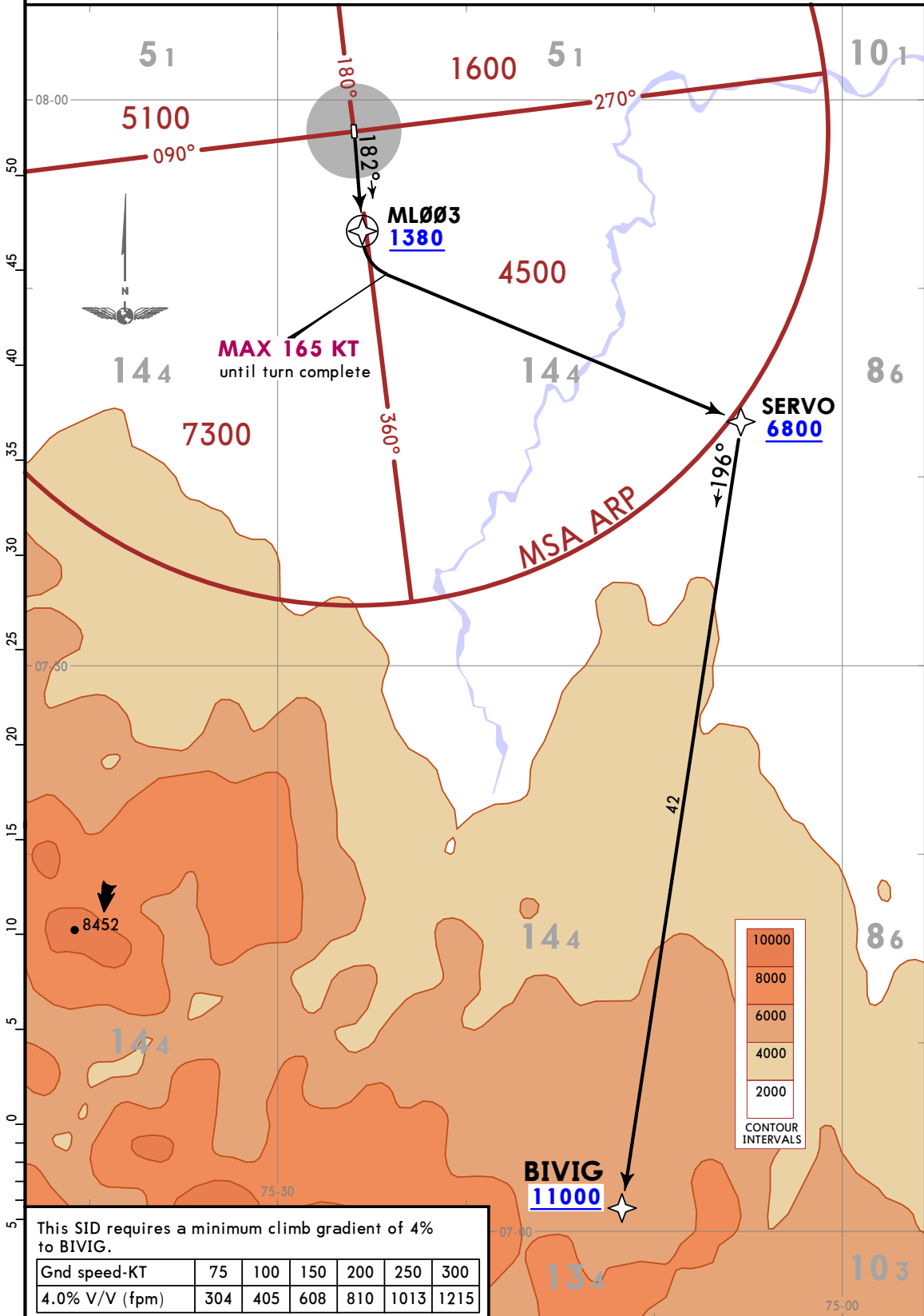
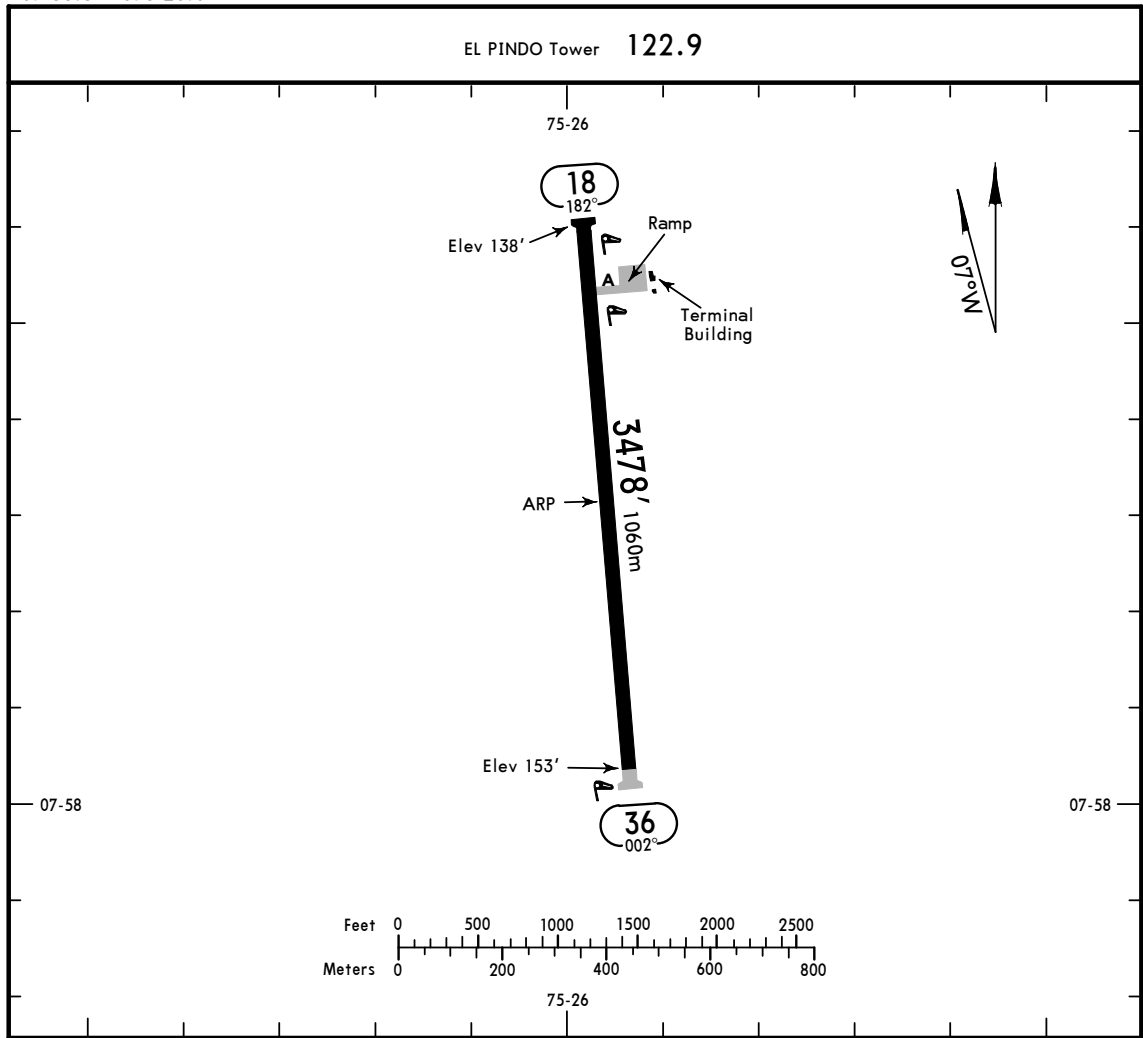


Apt Elev 157	Trans alt: 18000 1. RNAV 1. 2. GNSS required.
-----------------	---

**BIVIG 1E [BIVI1E]**  
**RWY 18 RNAV (GNSS) DEPARTURE**  
CAT A & B



CHANGES: New airport.



ADDITIONAL RUNWAY INFORMATION

RWY	USABLE LENGTHS	LANDING BEYOND		TAKE-OFF	WIDTH
		Threshold	Glide Slope		
18 36					85' 26m

TAKE-OFF

All Rwys

Standard

1 & 2 Eng

3 & 4 Eng

1600m

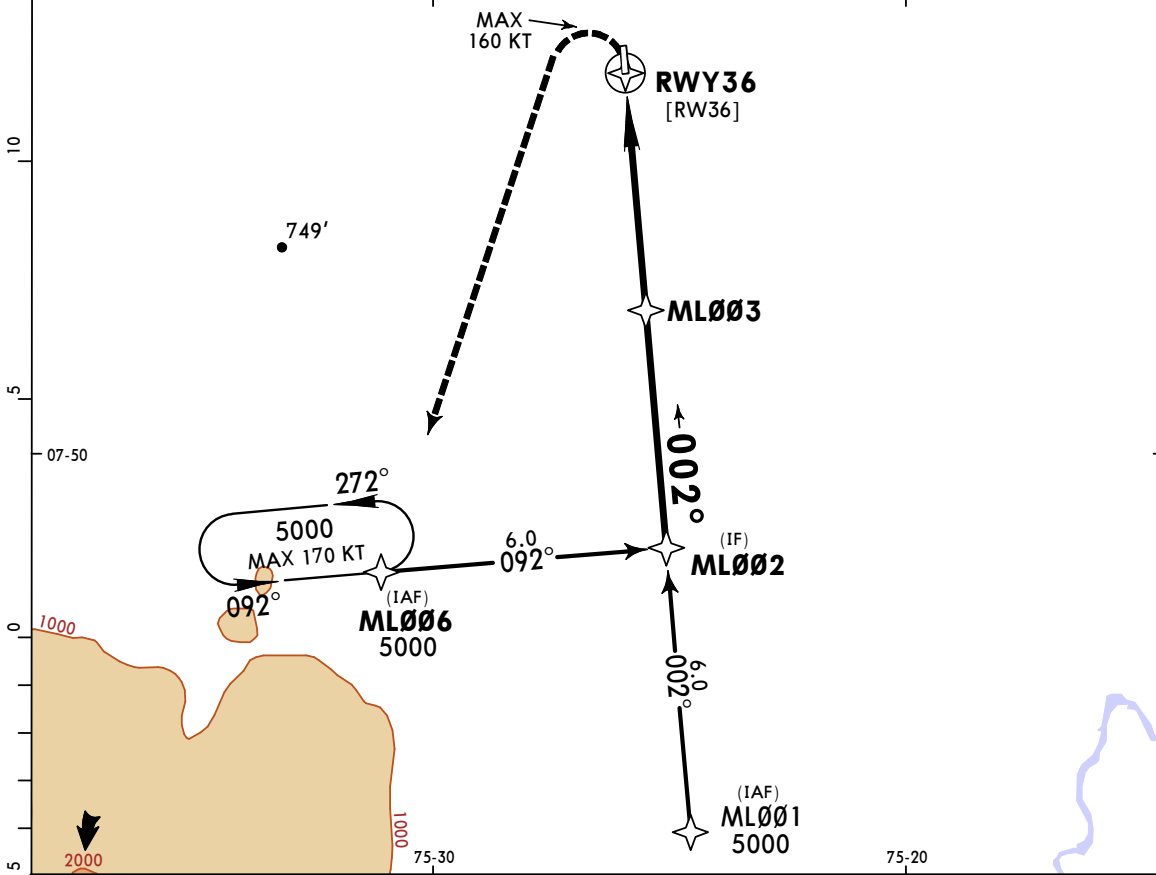
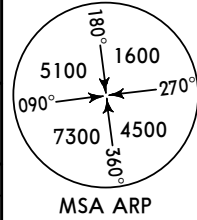
800m

SKML  
EL PINDO

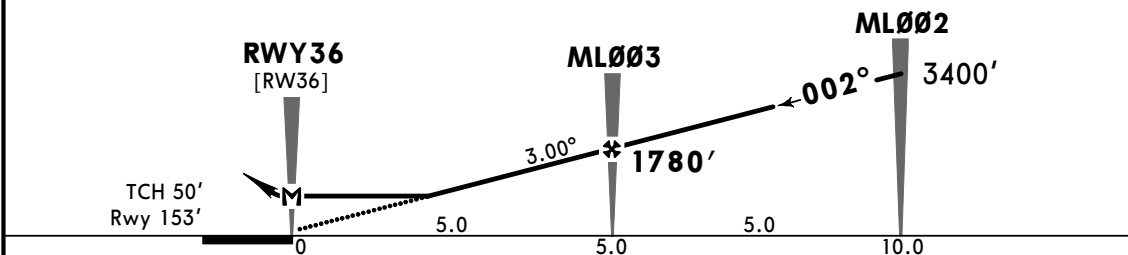
MISSED APCH CLIMB  
GRADIENT MIM 4.0%

JEPPESEN MONTELIBANO, COLOMBIA  
11 JUN 21 (12-1) Eff 17 Jun CAT A & B RNP Rwy 36

MEDELLIN Approach North 126.1				EL PINDO Tower 122.9	
RNAV	Final Apch Crs 002°	ML003 1780' (1627')	LNAV MDA(H) 1200' (1047')	Apt Elev 157' Rwy 153'	
<b>MISSED APCH:</b> Turn LEFT climbing to ML006 holding pattern at 5000'. MAX 160 KT until end of turn. Missed approach climb gradient mim 4.0%.					
RNP Apch	Alt Set: IN (hPa on req)	Trans level: FL 190	Trans alt: 18000'		
For checking in VMC only.					



DIST to THR	3.3	4.0	5.0
ALTITUDE	1200'	1480'	1795'



Gnd speed-Kts	70	90	100	120	140	160	5000' ← LT	ML006
Descent Angle	3.00°	372	478	531	637	849		
MAP at RWY36								
FAF to MAP	5.0	4:17	3:20	3:00	2:30	2:09	1:53	

STRAIGHT-IN LANDING RWY36				CIRCLE-TO-LAND			
LNAV MDA(H) 1200' (1047')				Max Kts MDA(H)			
A	5000m			100	1300' (1143') - 5000m		
B	NOT APPLICABLE			135	1500' (1343') - 5000m		
C	NOT APPLICABLE			C	NOT APPLICABLE		
D	NOT APPLICABLE			D	NOT APPLICABLE		

PANS OPS

CHANGES: New procedure.

© JEPPESEN, 2021. ALL RIGHTS RESERVED.