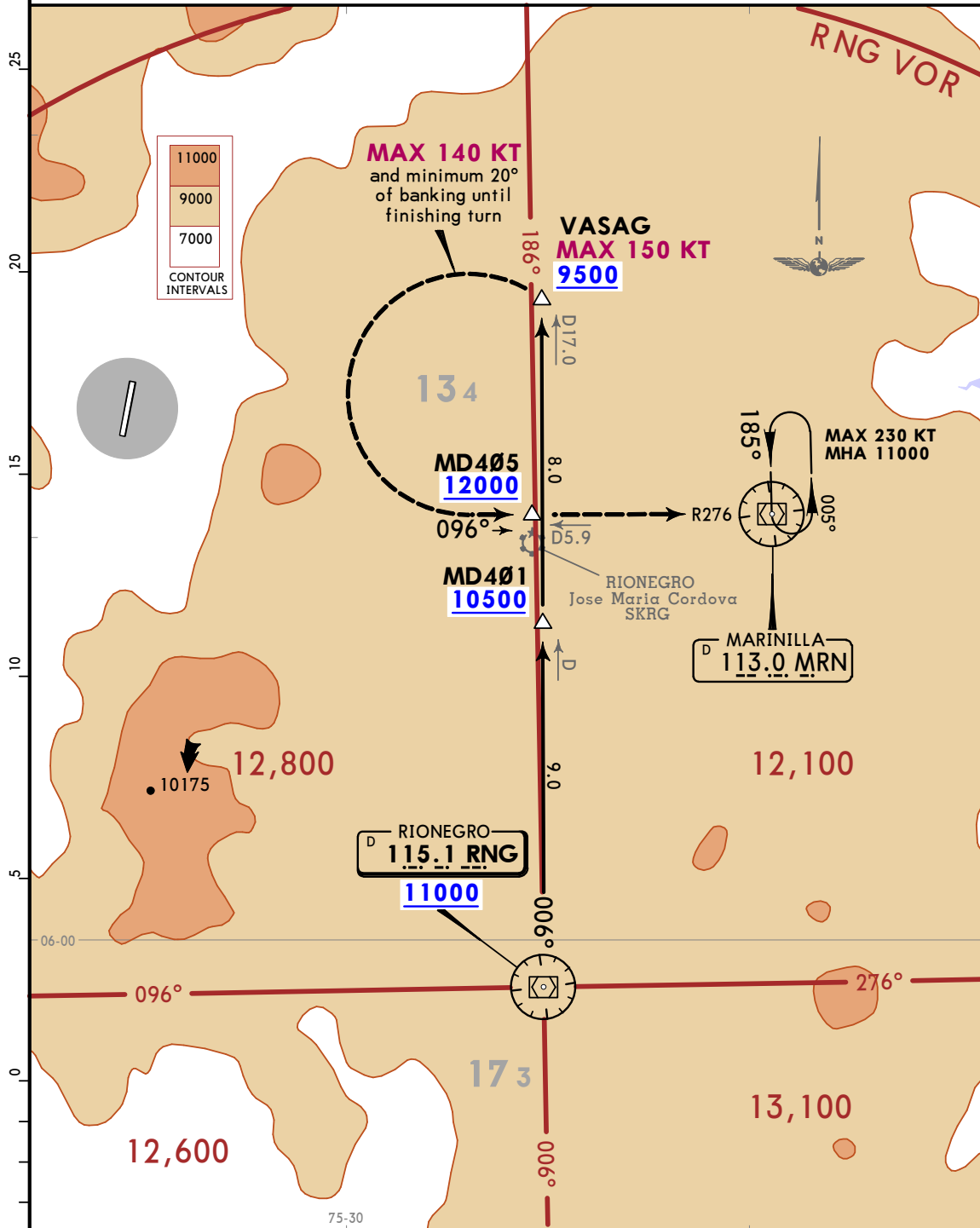


Apt Elev
4921

Alt Set: IN (hPa on req) Trans level: FL190
1. MRN VOR/DME required.
2. RNG VOR/DME required.

**RIONEGRO 1E ARRIVAL
(ALL RWYS)**
CAT A & B



This STAR requires a minimum climb gradient of 4.5% after crossing VASAG until 12000 or above.

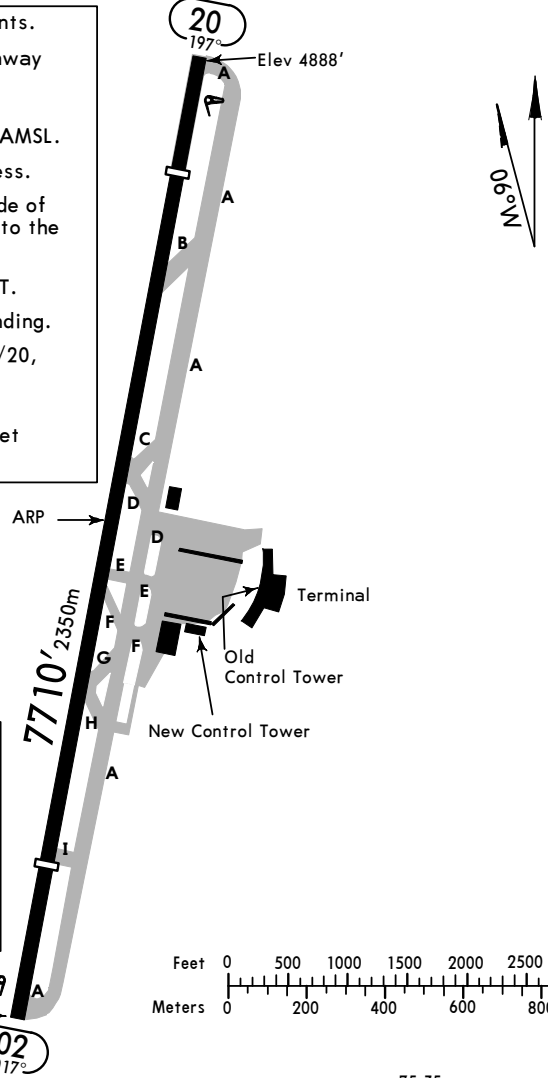
Gnd speed-KT	75	100	150	200	250	300
4.5% V/V (fpm)	342	456	684	911	1139	1367

ROUTING

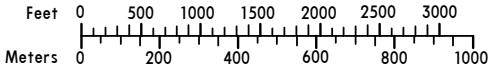
Crossing VASAG turn LEFT and continue until intercepting MRN R276.

ATIS	*AWOS	*MEDELLIN Clearance	*OLAYA HERRERA Ground	*Tower
115.1	127.825	121.75	121.90	118.0

CAUTION: Mountainous area in all quadrants.
 CAUTION: Machinery and personnel on runway strips due to spray works.
 CAUTION: Presence of balloons and kites, N06:13:13 W075:35:25, ground to 14500' AMSL.
 CAUTION: Rwy 02/20 Strip work in progress.
 Tower limited, reduced visibility Right side of Rwy 02/20 between Twy B and Twy C due to the presence of trees. Exercise caution.
 Max speed restriction in the circuit 150 KT.
 Concentration of birds on take-off and landing.
 Obstacles erected on approach runway 02/20, exercise caution.
 Rotating beacon.
 Only operations between sunrise and sunset are authorized.



RWY	INTERSECTION	TORA
02	GOLF	4429' (1350m)
	FOXTROT	3576' (1090m)
	ECHO	3576' (1090m)



ADDITIONAL RUNWAY INFORMATION

RWY	MIRL REIL	LANDING BEYOND		TAKE-OFF	WIDTH
		Threshold	Glide Slope		
02		5906' 1800m		7054' 2150m	115' 35m
20				NA	

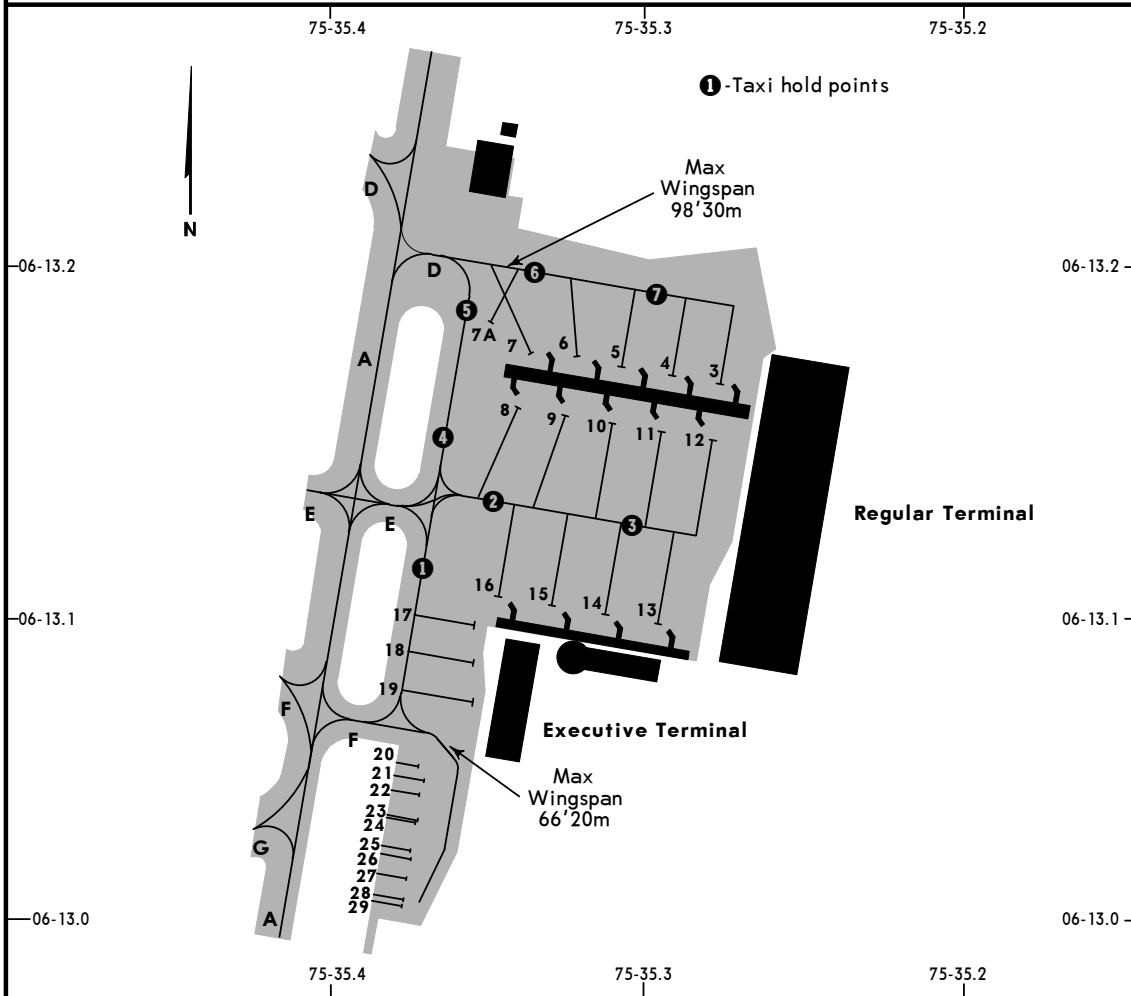
TAKE-OFF

Rwy 02

Standard

1 & 2 Eng	3 & 4 Eng
1600m	800m

In the aircraft stands, aircraft will be parked with the nose to the passenger terminal building.
 Movement with own power of acft from parking stands is prohibited.
 Start engines when acft is positioned in marked points designated on the apron.
 Aircraft cannot park outside the demarcated aircraft stands.
 Aircraft stands 13, 14, 15, 16 and 16A limited, the use of APU or ignition in H mode is not authorized for aircraft ATR or similar.



PARKING SPOT COORDINATES

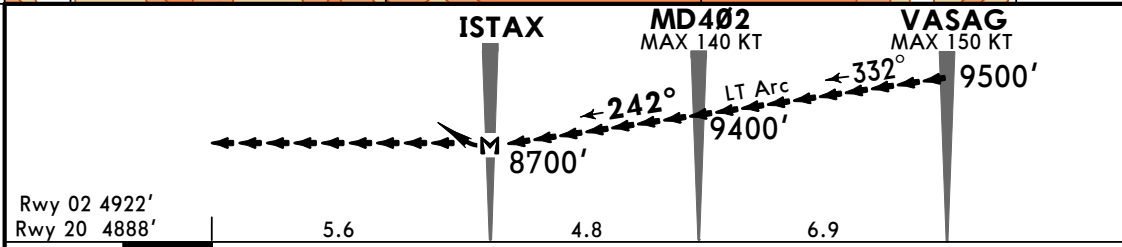
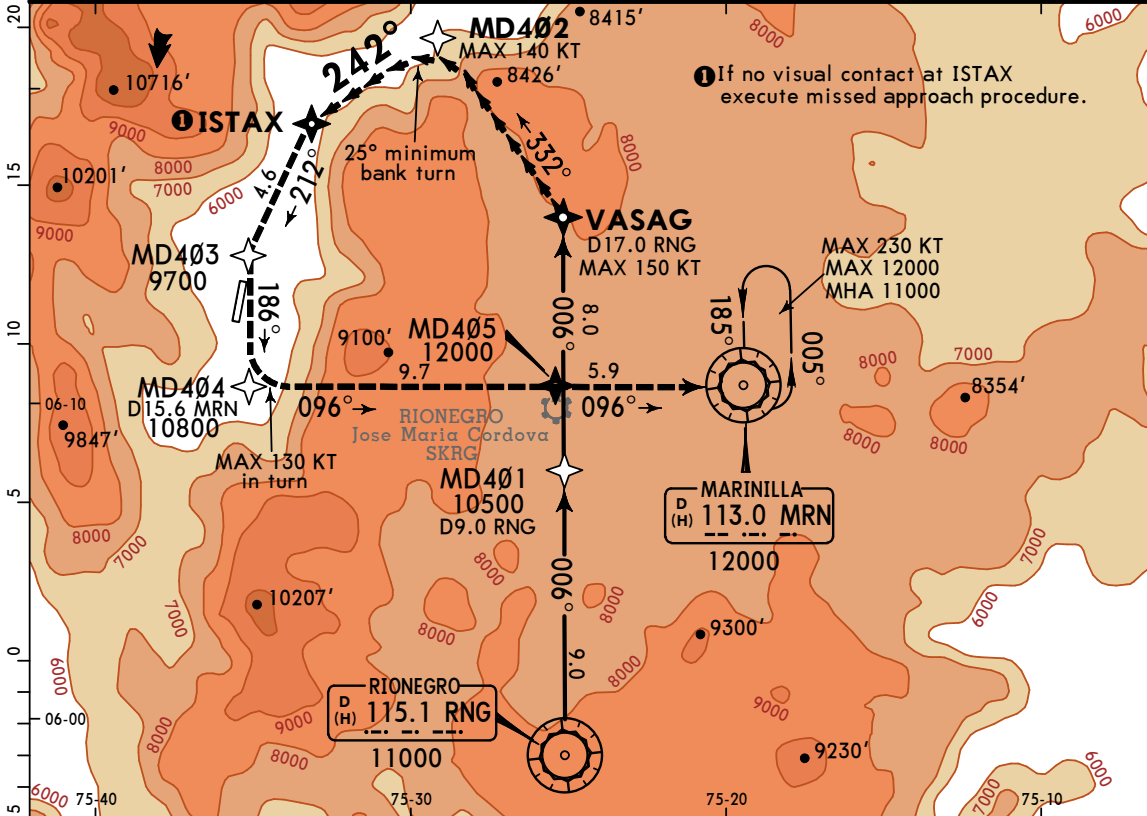
SPOT NO.	COORDINATES
3 thru 11	N06 13.2 W075 35.3
12 thru 18	N06 13.1 W075 35.3
19	N06 13.1 W075 35.4
20 thru 29	N06 13.0 W075 35.4

SKMD/EOH
OLAYA HERRERA

11 JUN 21
Eff 17 Jun (12-1) **JEPPESEN**
MISSED APCH CLIMB
GRADIENT MIM 4.5%

MEDELLIN, COLOMBIA
RNAV VISUAL FLIGHT PROCEDURE
CAT A & B RNP Rwy 02/20

ATIS 115.1	*AWOS 127.825	*MEDELLIN Approach South 121.1	North 126.1	*OLAYA HERRERA Tower 118.0	*Ground 121.9
RNAV	Final Apch Crs 242°	VASAG 9500' (4579')	MDA(H) 8700' (3779')	Apt Elev 4921' Rwy 02 4922' Rwy 20 4888'	<p>MSA RING VOR</p>
MISSED APCH: Maintain on RVFP track climbing with minimum gradient 4.5% until reaching 12000' or above, after turn maintain heading to MRN VOR holding and expect ATC instructions. MAX IAS 130 kt until end of turn.					
Alt Set: IN (hPa on req)		Trans level: FL 190		Trans alt: 18000'	
RNP Apch Certification required.					
1. CAUTION: Mountainous terrain all quadrants and terrain West of aerodrome up to 9000' or higher. 2. Circle only to the East. 3. If loss of visual contact in circuit execute Go Around Procedure. Go Around Procedure: Expect ATC instructions.					



MAP at ISTAX					REIL	12000'	via	RVFP track	MRN 113.0
--------------	--	--	--	--	------	--------	-----	------------	-----------

STRAIGHT-IN LANDING RWY 02/20
Missed Apch climb gradient mim 4.5%
MDA(H) 8700' (3779')

PANS OPS	A	
	B	6000m