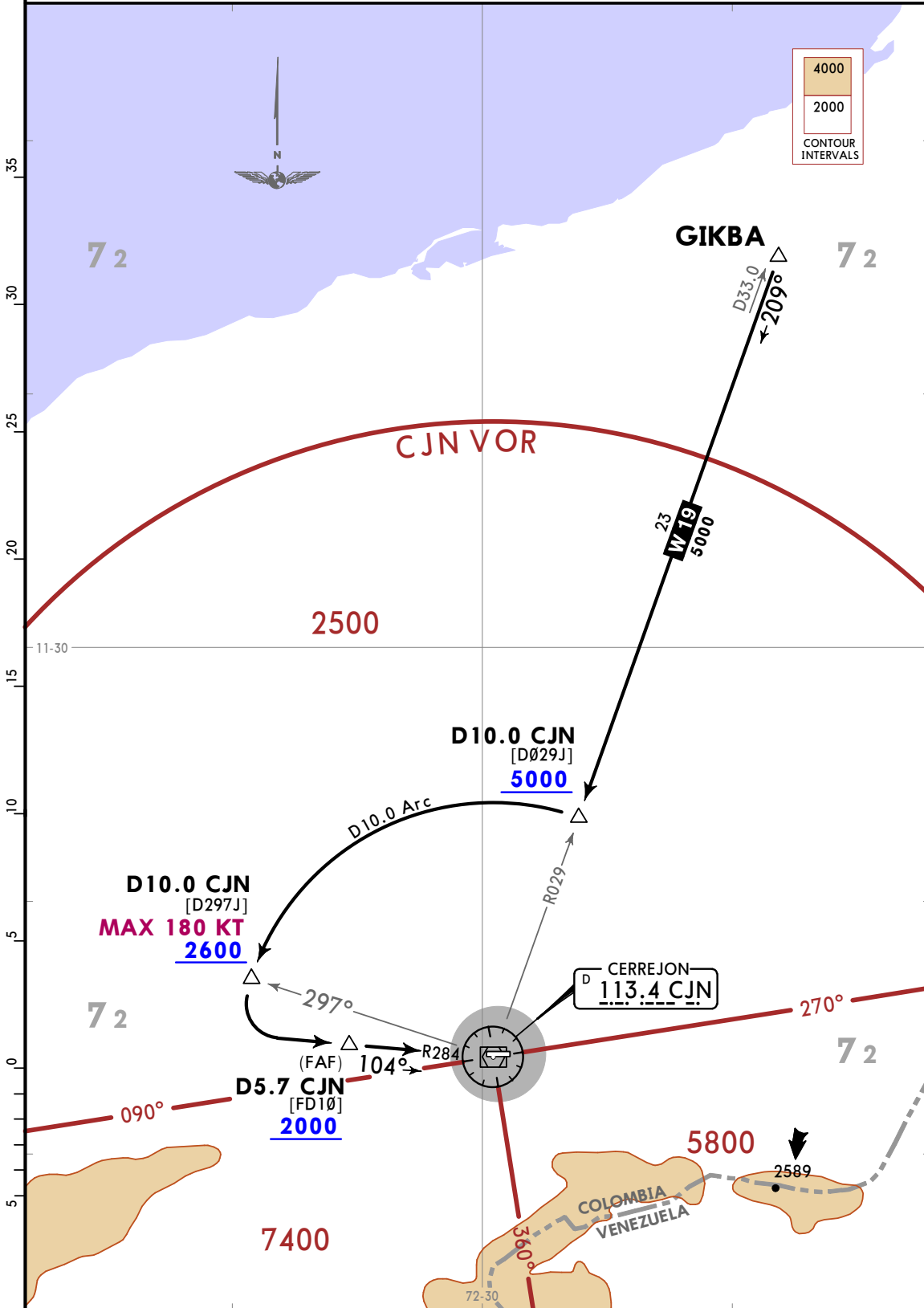


Apt Elev  
345

Alt Set: IN (hPa on req) Trans level: FL190  
CJN VOR/DME required.

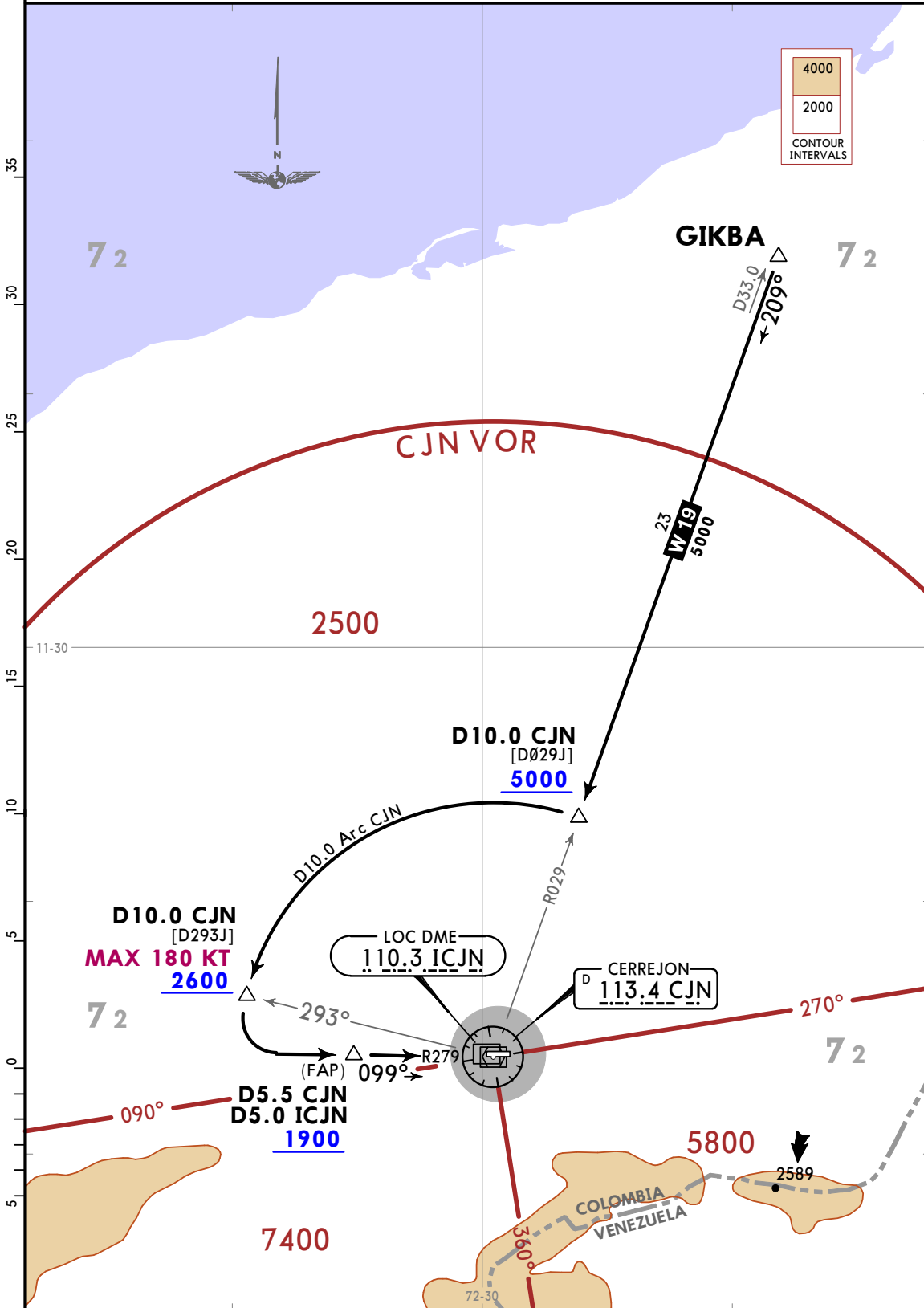
GIKBA 1D ARRIVAL [GIKB1D]  
(RWY 10)  
CAT A, B & C



Apt Elev  
345

Alt Set: IN (hPa on req) Trans level: FL190  
CJN VOR/DME required.

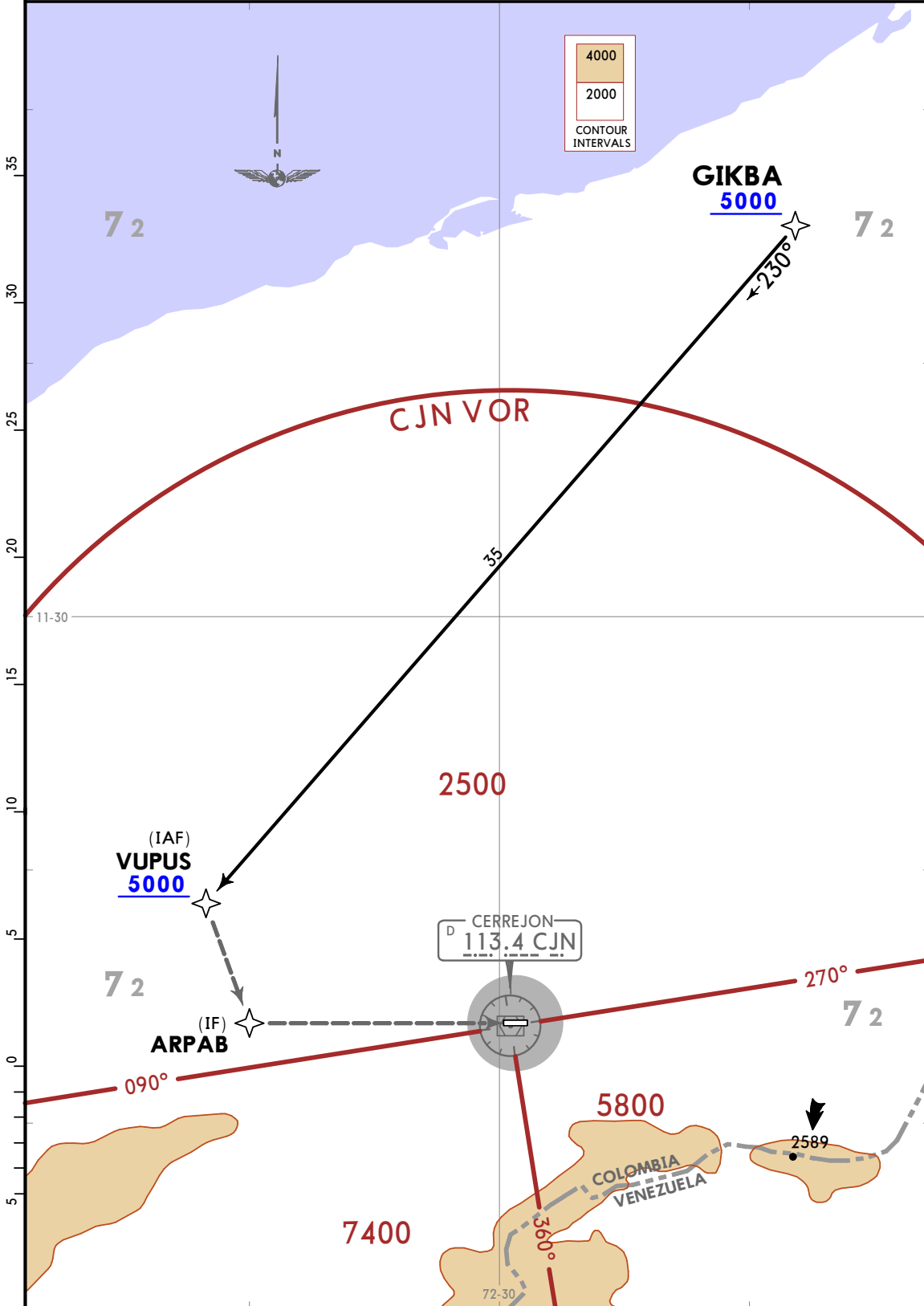
GIKBA 1E ARRIVAL [GIKB1E]  
(RWY 10)  
CAT A, B & C



Apt Elev  
345

Alt Set: IN (hPa on req) Trans level: FL190  
1. RNP 1 or RNAV 1.  
2. GNSS required.

GIKBA 1F RNAV ARRIVAL [GIKB1F]  
(RWY 10)  
CAT A, B & C



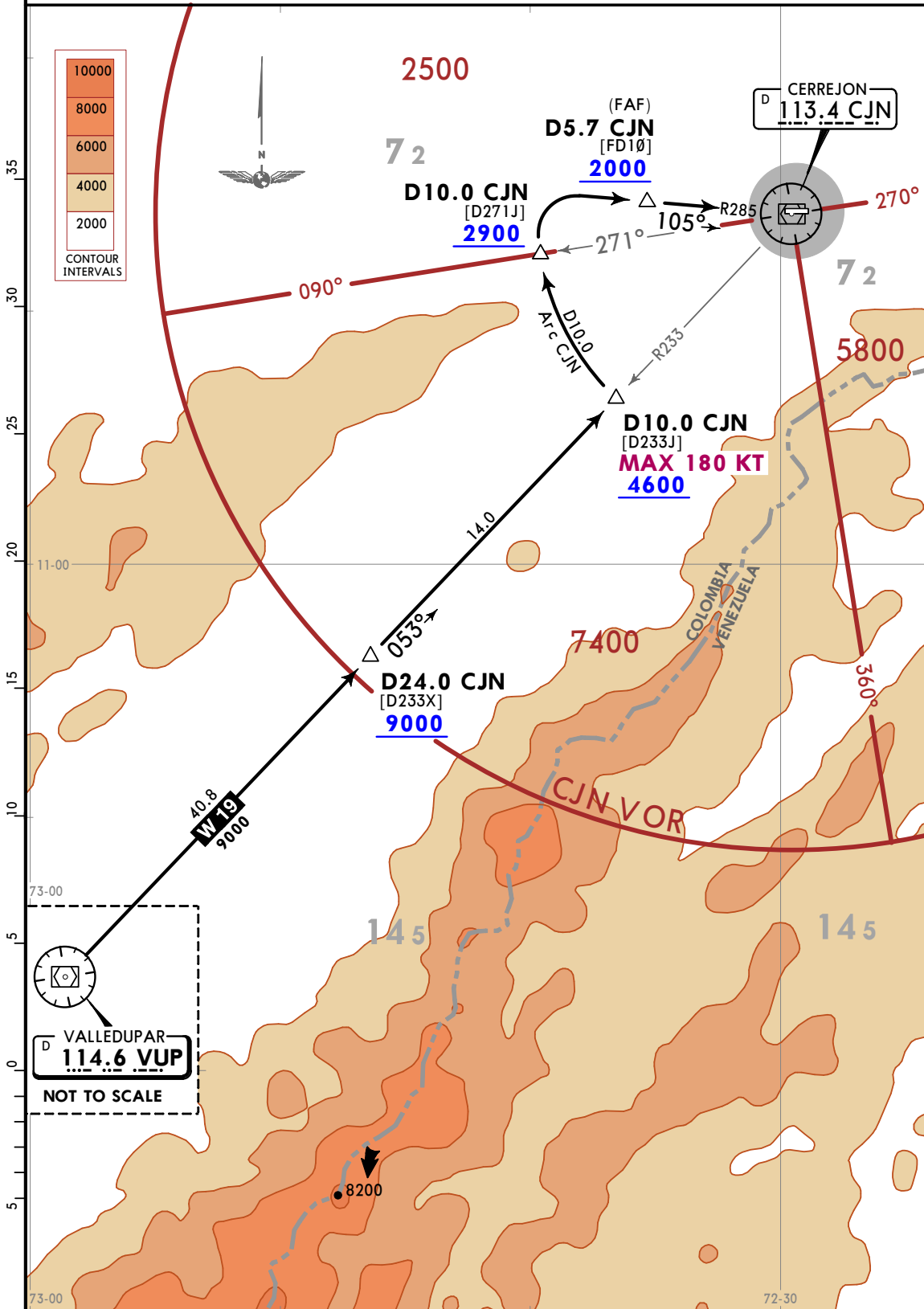


Apt Elev  
345

Alt Set: IN (hPa on req) Trans level: FL190  
CJN VOR/DME required.

### VALLEDUPAR 1K ARRIVAL [VUP1K] (RWY 10)

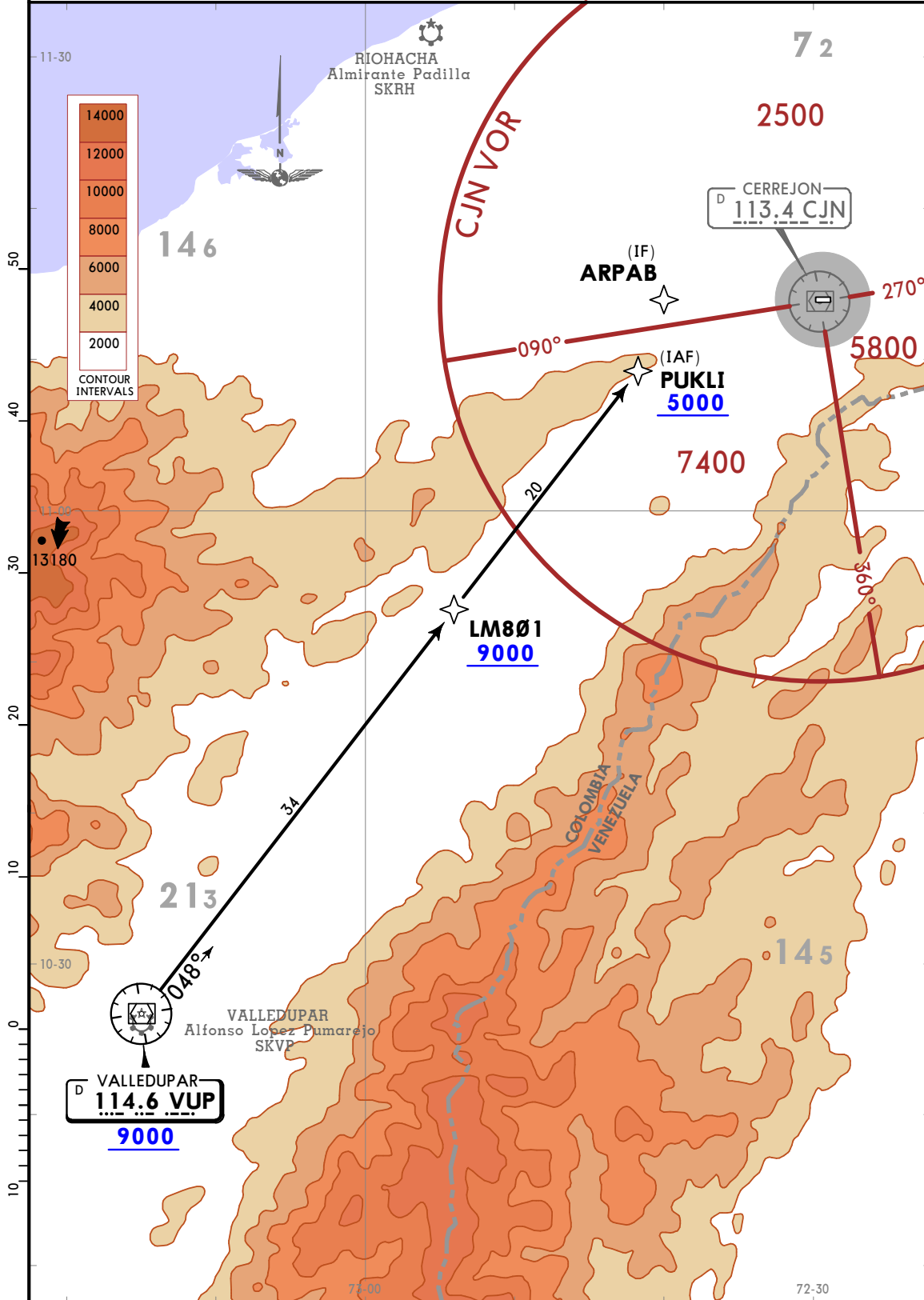
CAT A, B & C

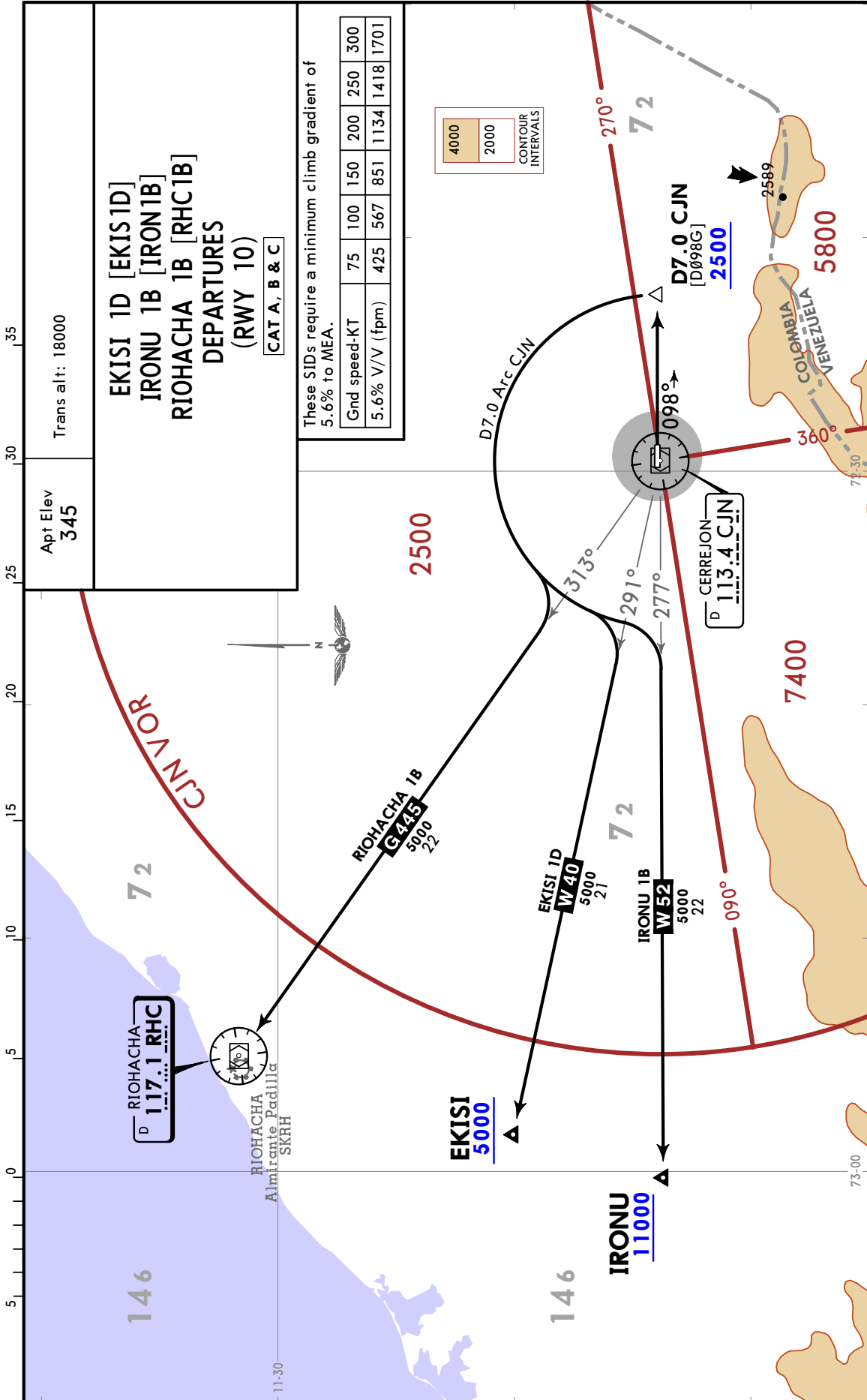


Apt Elev  
345

Alt Set: IN (hPa on req) Trans level: FL190  
1. RNP 1 or RNAV 1.  
2. GNSS required.

VALLEDUPAR 1L RNAV (GNSS) ARRIVAL [VUP1L]  
(RWY 10)  
CAT A, B & C



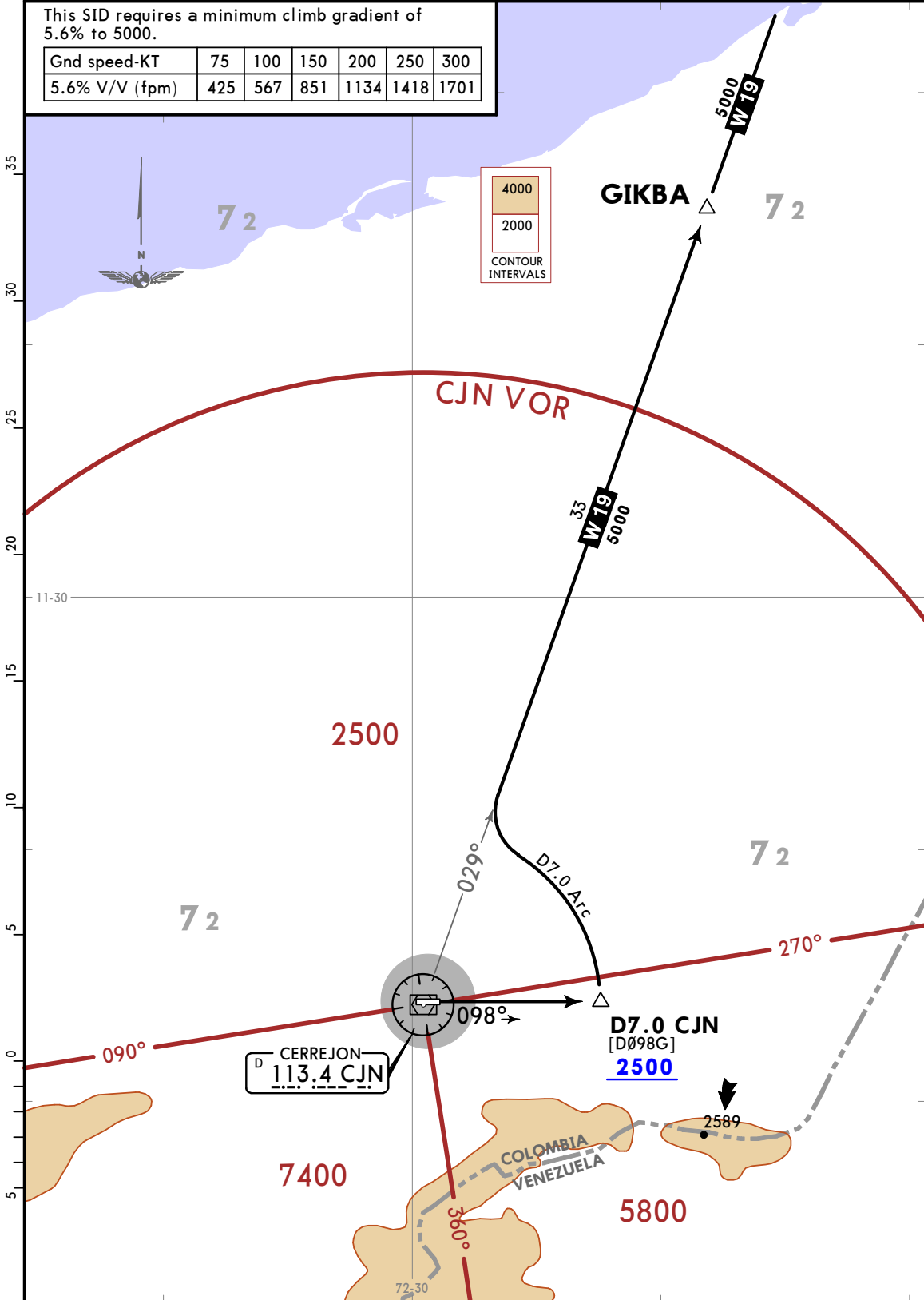


Apt Elev <b>345</b>	Trans alt: 18000
------------------------	------------------

**GIKBA 1B DEPARTURE [GIKB1B]**  
**(RWY 10)**  
CAT A, B & C

This SID requires a minimum climb gradient of 5.6% to 5000.

Gnd speed-KT	75	100	150	200	250	300
5.6% V/V (fpm)	425	567	851	1134	1418	1701



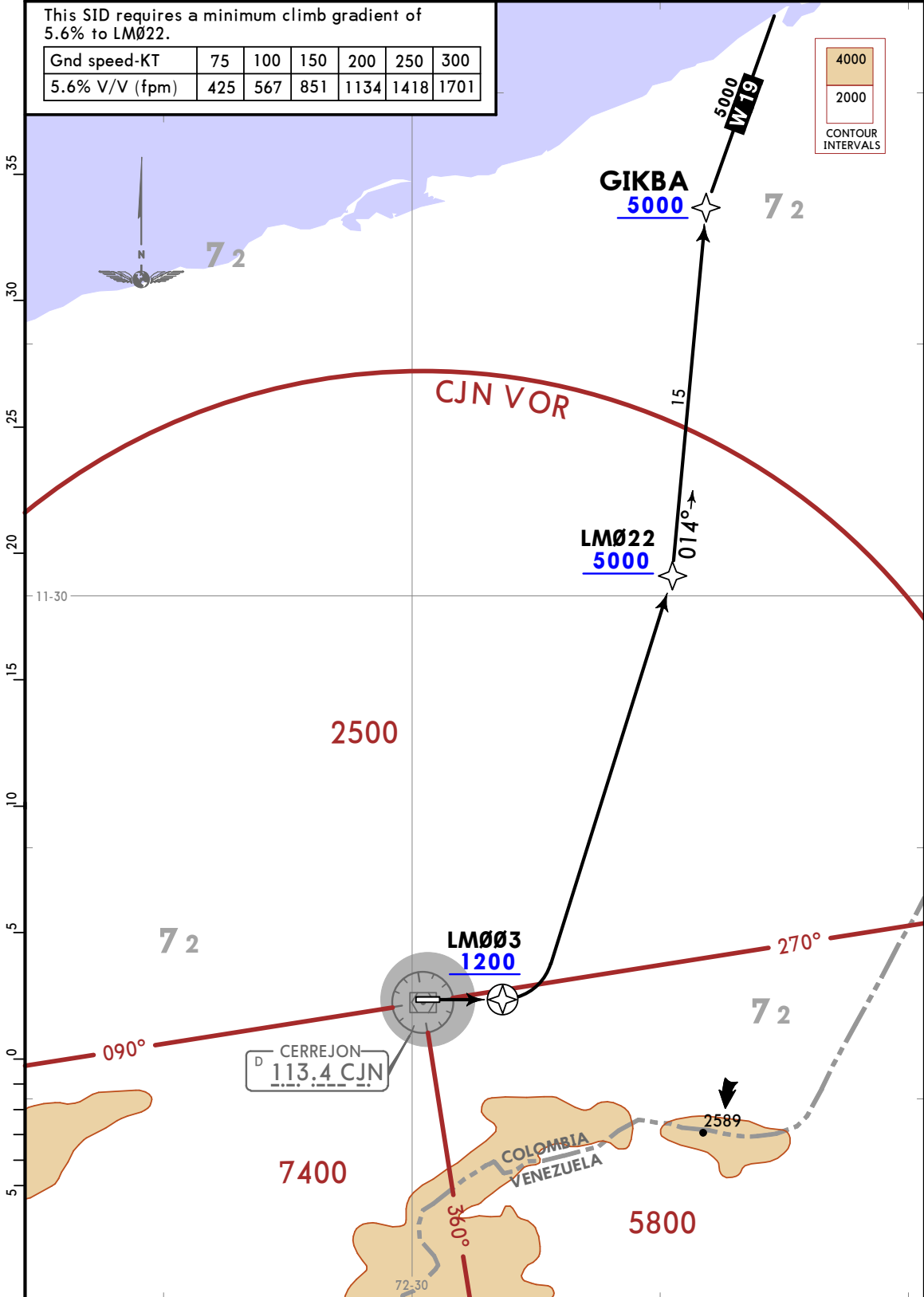
Apt Elev <b>345</b>	Trans alt: 18000 1. RNP 1 or RNAV 1. 2. GNSS required.
------------------------	--

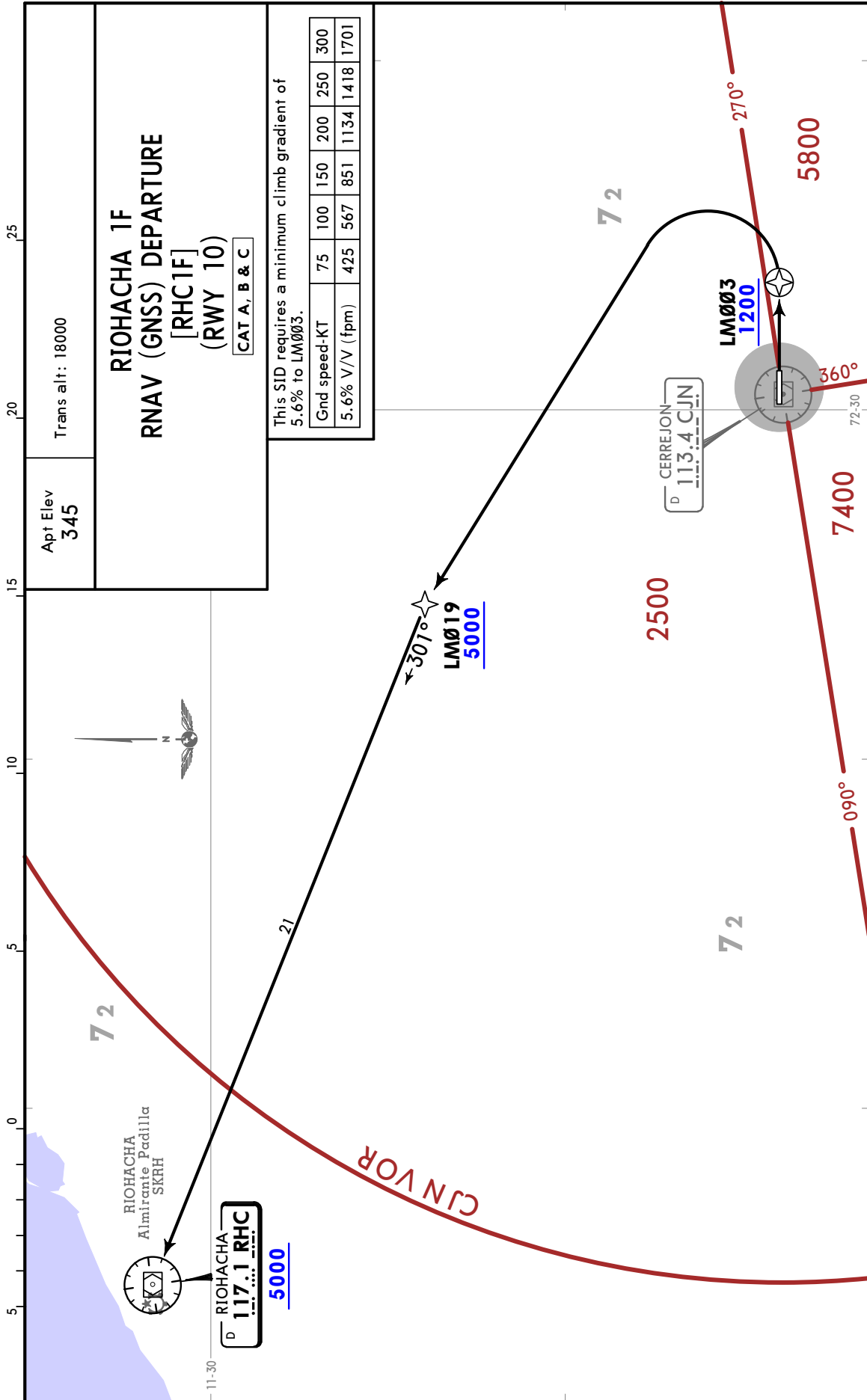
**GIKBA 1C RNAV DEPARTURE [GIKB1C]**  
**(RWY 10)**  
**CAT A, B & C**

This SID requires a minimum climb gradient of 5.6% to LMØ22.

Gnd speed-KT	75	100	150	200	250	300
5.6% V/V (fpm)	425	567	851	1134	1418	1701

4000  
2000  
CONTOUR INTERVALS



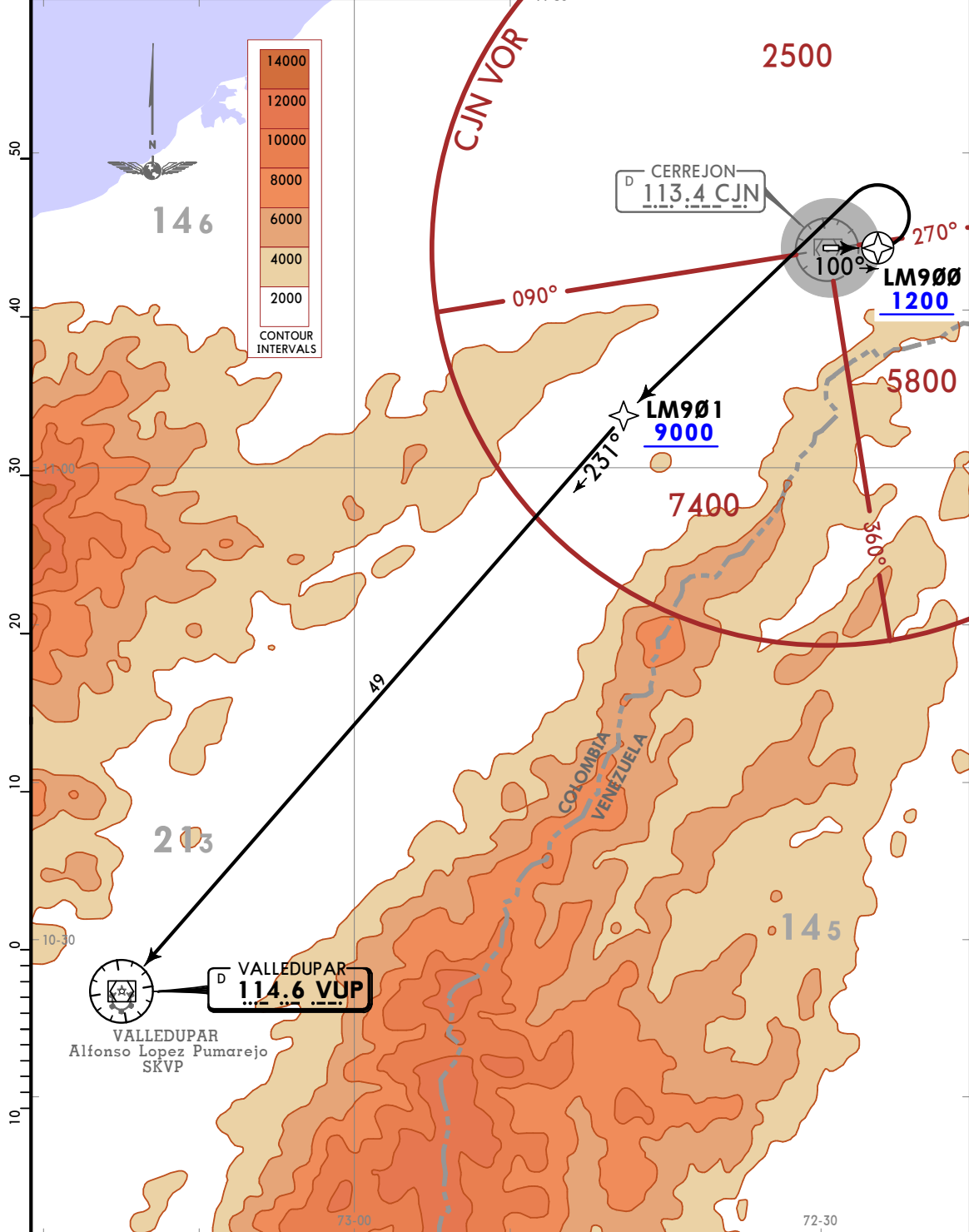


Apt Elev <b>345</b>	Trans alt: 18000 1. RNP 1 or RNAV 1. 2. GNSS required.
------------------------	--

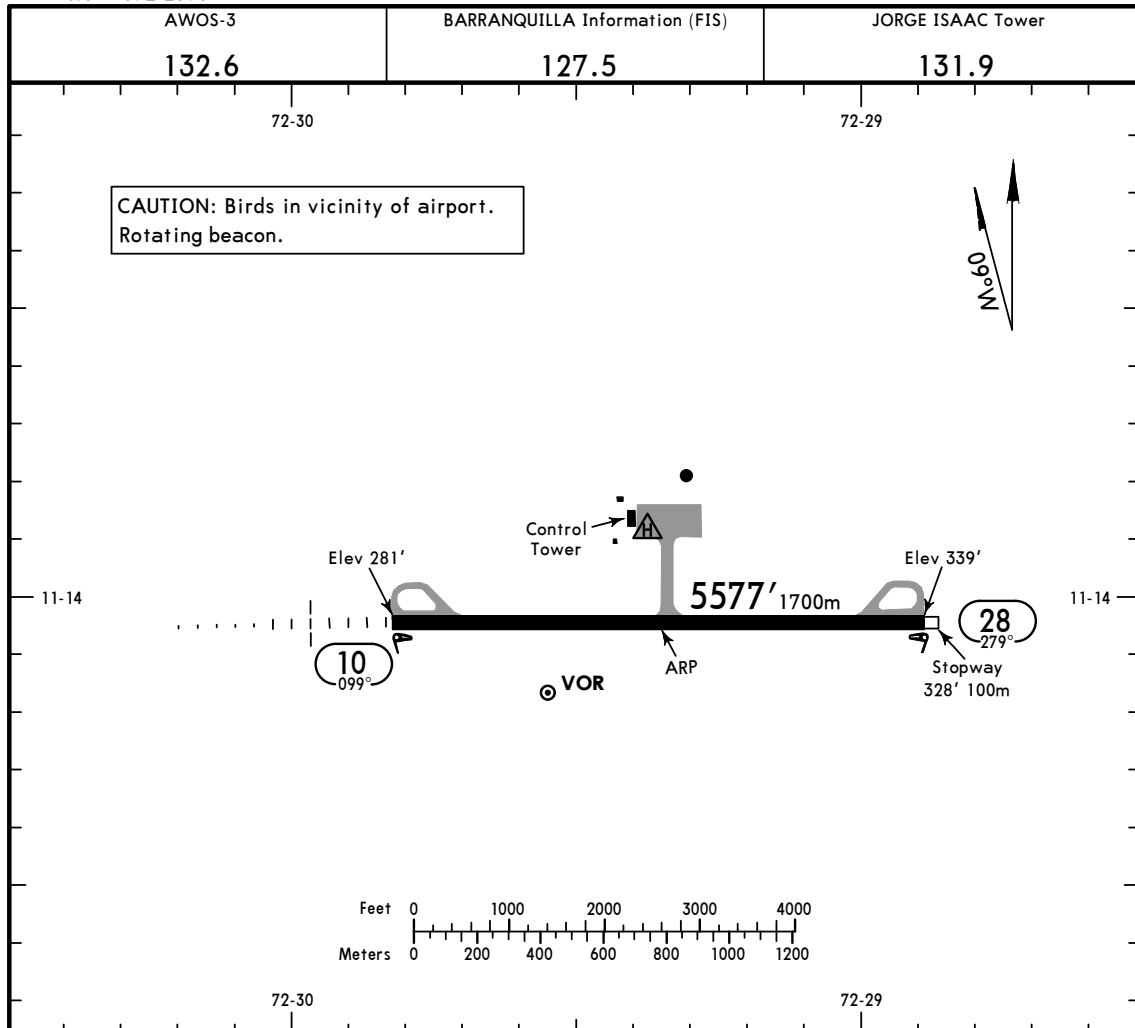
**VALLEDUPAR 1H RNAV (GNSS) DEPARTURE [VUP1H]**  
(RWY 10)  
CAT A, B & C

This SID requires a minimum climb gradient of 5.6% to LM901.

Gnd speed-KT	75	100	150	200	250	300
5.6% V/V (fpm)	425	567	851	1134	1418	1701



CHANGES: New format.



ADDITIONAL RUNWAY INFORMATION

RWY					USABLE LENGTHS		TAKE-OFF	WIDTH
	RL	REIL	MALSR	PAPI-L (angle 3.0°)	Threshold	Glide Slope		
10	RL	REIL	MALSR	PAPI-L (angle 3.0°)		4625' 1410m		148'
28	RL	REIL	APAPI	(angle 3.18°)				45m

TAKE-OFF

All Rwys

1 Take-off Alternate Airport Filed

RL & RCLM

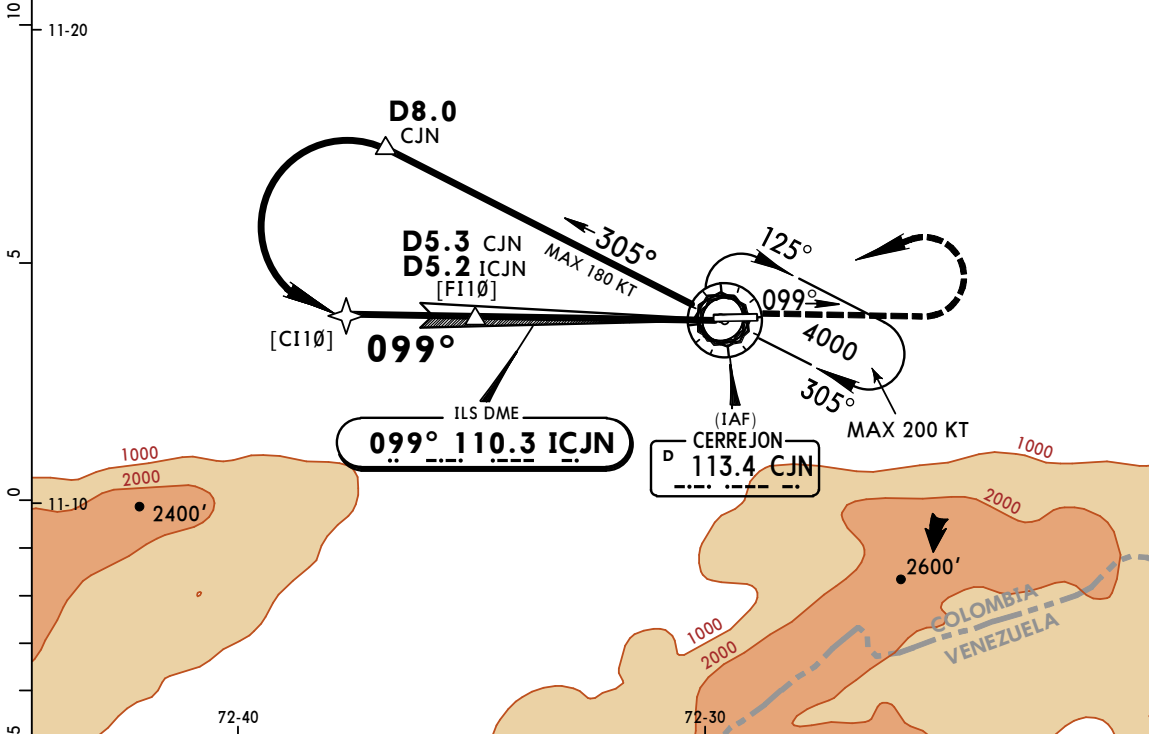
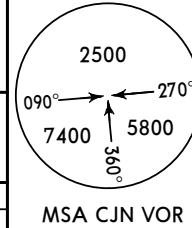
STD

1 Eng		3000m
2 Eng	1 hour alternate (1 Eng inop) 500m	1600m
3 & 4 Eng	2 hour alternate (1 Eng inop) 500m	800m

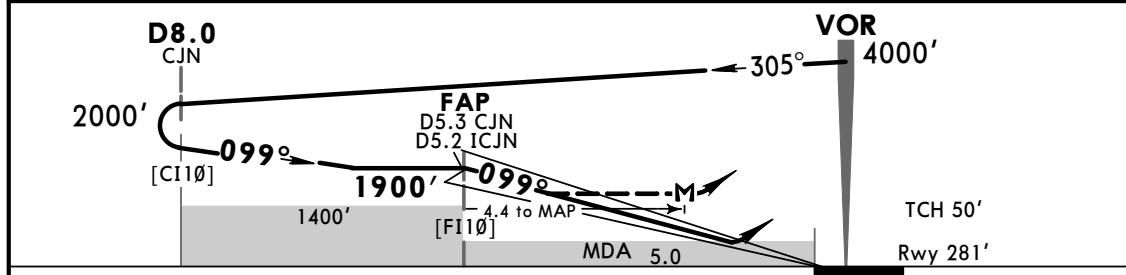
1 With appropriate approval.

In case of failure of AWOS-3 equipment, use QNH of right-hand circuit and increase/raise operational minima by 150'.

AWOS-3 132.6		BARRANQUILLA Information (FIS) 127.5			JORGE ISAAC Tower 131.9	
LOC ICJN <b>110.3</b>	Final Apch Crs <b>099°</b>	Minimum Alt FAP <b>1900'</b> (1619')	ILS DA(H) <b>540'</b> (259')	Apt Elev 345' Rwy 281'		
<b>MISSED APCH: Maintain heading 099° and climb to 1000', then turn LEFT to CJN VOR to hold at 4000'.</b> Minimum climb gradient 3.0% to 1000'.						
Alt Set: IN (hPa on req)		Trans level: FL 190		Trans alt: 18000'		
1. CJN VOR required. 2. CJN DME or ICJN DME required.						



LOC	ICJN	5.0	4.0	3.0	2.0
GS (out)	ALTITUDE	1911'	1595'	1279'	963'



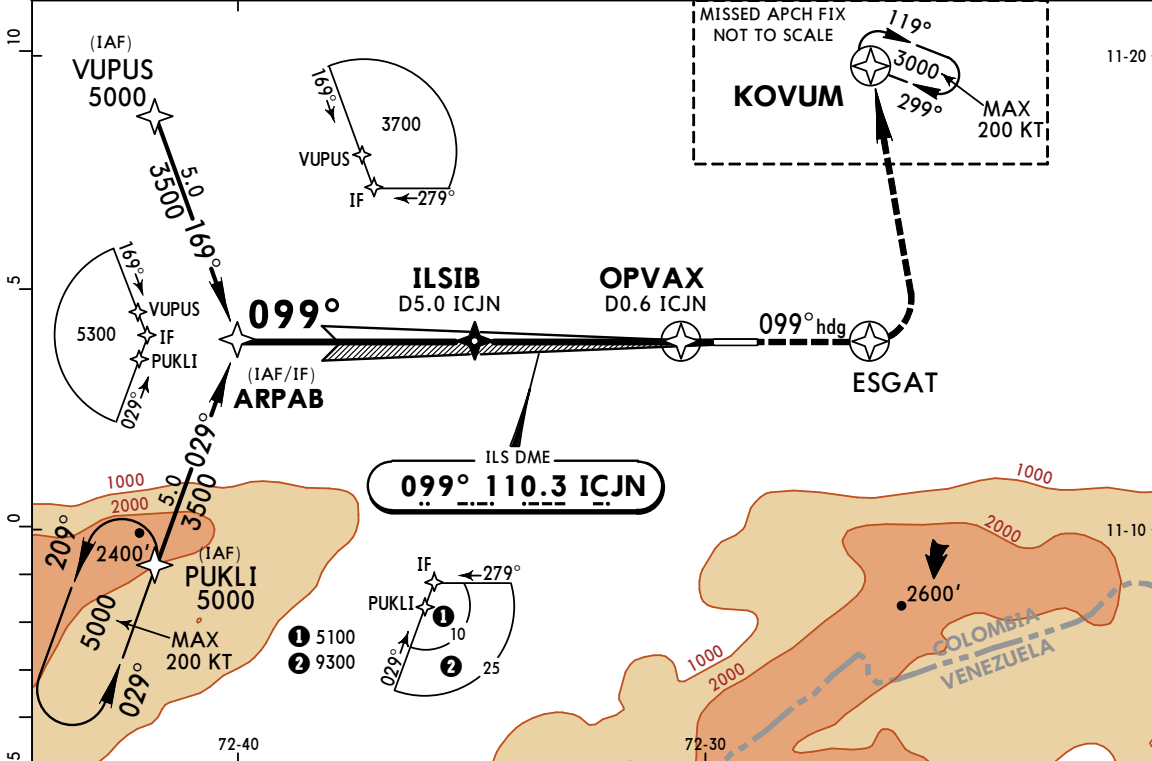
Gnd speed-Kts	70	90	100	120	140	160	MALSR REIL PAPI	099° hdg	1000' ↑	4000' ←	CJN 113.4	
GS	3.00°	372	478	531	637	743						849
FAP to MAP	4.4	3:46	2:56	2:38	2:12	1:53						1:39

STRAIGHT-IN LANDING RWY10 Missed Apch Climb Gradient Mim 3.0% to 1000'				CIRCLE-TO-LAND Missed Apch Climb Gradient Mim 3.0% to 1000'			
ILS DA(H) <b>540'</b> (259')		LOC (GS out) MDA(H) <b>690'</b> (409')		Max Kts		MDA(H)	
FULL	RAIL or ALS out	RAIL out	ALS out	100	740' (395') - 2000m		
1000m	1400m	1600m		135	840' (495') - 3000m		
		2000m		180	<b>1040'</b> (695') - 4000m		
NOT APPLICABLE		NOT APPLICABLE		D	NOT APPLICABLE		

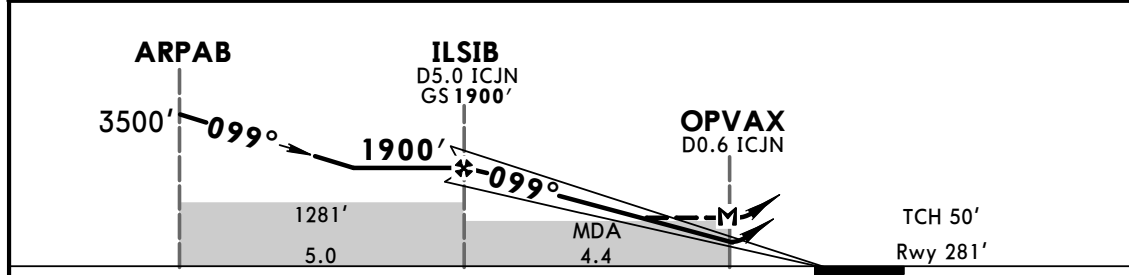
PANS OPS

Not Authorized South of Airport.

AWOS-3 132.6		BARRANQUILLA Information (FIS) 127.5		JORGE ISAAC Tower 131.9	
LOC ICJN <b>110.3</b>	Final Apch Crs <b>099°</b>	GS ILSIB <b>1900'</b> (1619')	ILS DA(H) <b>531'</b> (250')	Apt Elev 345'	TAA 25 NM IAF
Rwy 281'					
<b>MISSED APCH:</b> Maintain heading 099° and climb to ESGAT and 1000', then turn LEFT to KOVUM to hold at 3000'. Minimum climb gradient 3.0% to 1000'.					
Alt Set: IN (hPa on req)		Trans level: FL 190		Trans alt: 18000'	
1. ICJN DME required. 2. Do not use PUKLI and KOVUM holding simultaneously at the same level.					



LOC (GS out)	ICJN	5.0	4.0	3.0	2.0	1.0
ALTITUDE		1911'	1595'	1279'	963'	647'

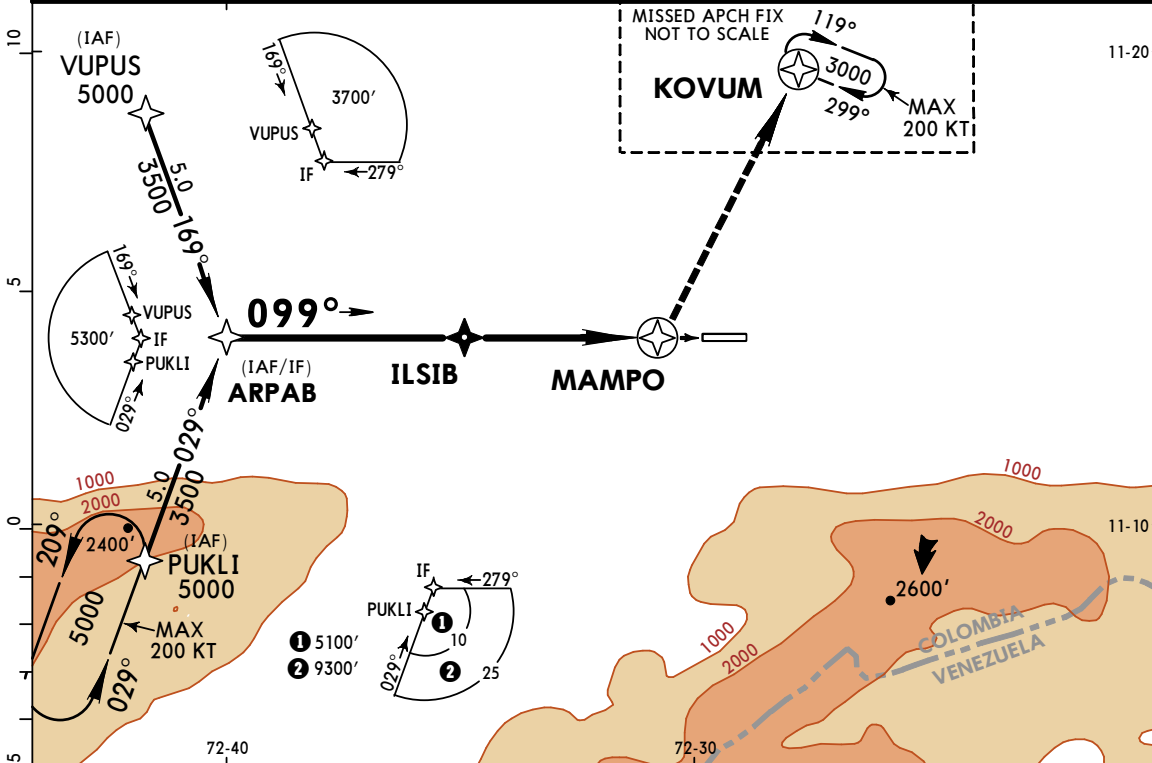


Gnd speed-Kts	70	90	100	120	140	160	MALSR REIL PAPI 099° hdg 1000' ESGAT
GS	3.00°	372	478	531	637	743	
FAF to MAP	4.4	3:46	2:56	2:38	2:12	1:53	

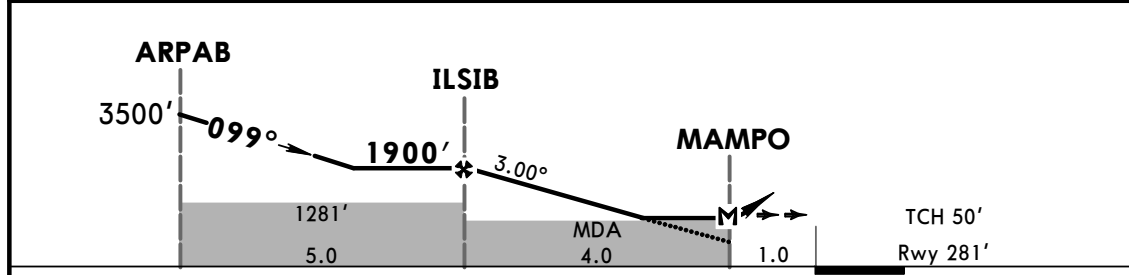
STRAIGHT-IN LANDING RWY10 Missed Apch Climb Gradient Mim 3.0% to 1000'				CIRCLE-TO-LAND Missed Apch Climb Gradient Mim 3.0% to 1000'			
ILS DA(H) <b>531'</b> (250')		LOC (GS out) MDA(H) <b>631'</b> (350')		Max Kts		MDA(H)	
FULL	RAIL or ALS out	RAIL out	ALS out	100	740' (395') - 2000m		
1300m		1800m		135	840' (495') - 2500m		
		2000m		180	1040' (695') - 3600m		
NOT APPLICABLE		NOT APPLICABLE		D	NOT APPLICABLE		

PANS OPS

AWOS-3 <b>132.6</b>		BARRANQUILLA Information (FIS) <b>127.5</b>		JORGE ISAAC Tower <b>131.9</b>	
RNAV	Final Apch Crs <b>099°</b>	Minimum Alt ILSIB <b>1900'</b> (1619')	LNAV MDA(H) <b>630'</b> (349')	Apt Elev 345' Rwy 281'	TAA 25 NM IAF
<b>MISSED APCH: Turn LEFT, climb to KOVUM to hold at 3000'.</b>					
Alt Set: IN (hPa on req)		Trans level: FL 190		Trans alt: 18000'	
1. Do not use PUKLI and KOVUM holding simultaneously at the same level.					



DIST to THR	5.0	4.0	3.0	2.0	1.0
ALTITUDE	1911'	1595'	1279'	963'	647'



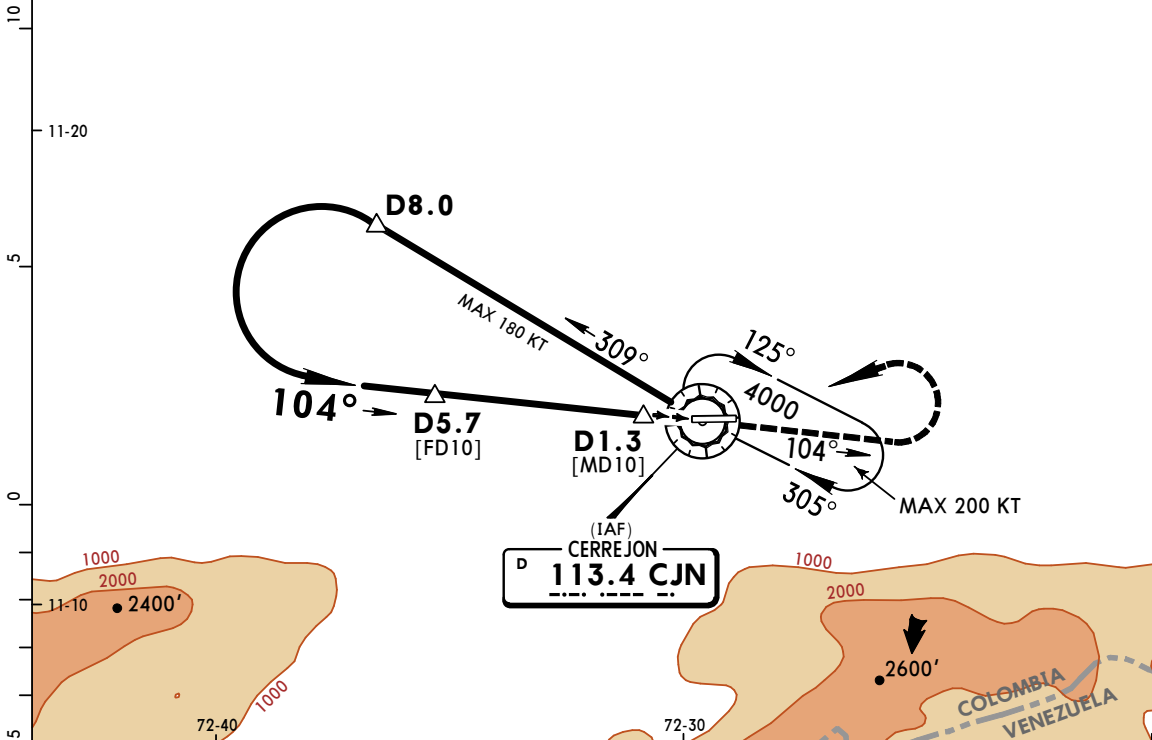
Gnd speed-Kts	70	90	100	120	140	160	MALSR REIL PAPI	LT	D	KOVUM	3000'
Descent Angle 3.00°	372	478	531	637	743	849					
MAP at MAMPO or											
FAF to MAP	4.0	3:26	2:40	2:24	2:00	1:43					

STRAIGHT-IN LANDING RWY10				CIRCLE-TO-LAND			
LNAV							
MDA(H) <b>630'</b> (349')							
FULL		RAIL or ALS out		Max Kts	MDA(H)		
A	1800m			100	740' (395') - 2000m		
B	2000m			135	840' (495') - 2500m		
C	NOT APPLICABLE			180	1040' (695') - 3600m		
D	NOT APPLICABLE			D	NOT APPLICABLE		

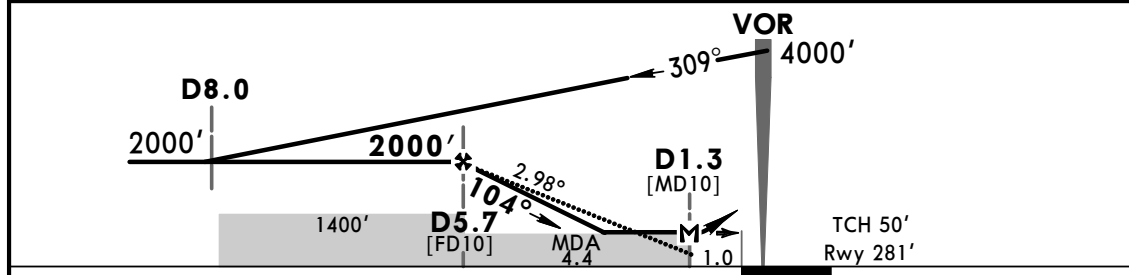
PANS OPS

Not Authorized South of Airport.

AWOS-3 <b>132.6</b>		BARRANQUILLA Information (FIS) <b>127.5</b>			JORGE ISAAC Tower <b>131.9</b>
VOR CJN <b>113.4</b>	Final Apch Crs <b>104°</b>	Minimum Alt D5.7 <b>2000'</b> (1719')	MDA(H) <b>700'</b> (419')	Apt Elev 345' Rwy 281'	
<b>MISSED APCH: Maintain heading 104° and climb to 1000', then turn LEFT to CJN VOR and hold at 4000'.</b> Minimum climb gradient 3.0% to 1000'.					
Alt Set: IN (hPa on req)		Trans level: FL 190		Trans alt: 18000'	
1. CJN VOR, DME required.					MSA CJN VOR



CJN DME	5.0	4.0	3.0	2.0
ALTITUDE	1825'	1510'	1194'	878'



Gnd speed-Kts	70	90	100	120	140	160	MALSR REIL PAPI	104° hdg	1000' ↑	4000' LT	CJN 113.4	
Descent Angle	2.98°	369	474	527	633	738						843
MAP at D1.3 CJN or FAF to MAP	4.4	3:46	2:56	2:38	2:12	1:53						1:39

STRAIGHT-IN LANDING RWY 10 Missed Apch Climb Gradient Mim 3.0% to 1000' MDA(H) <b>700'</b> (419')				CIRCLE-TO-LAND Missed Apch Climb Gradient Mim 3.0% to 1000'			
RAIL out		ALS out		Max Kts	MDA(H)		
A	1600m		100		740' (395') - 2000m		
B	2000m		135	840' (495') - 3000m			
C	NOT APPLICABLE		180	1 1040' (695') - 4000m			
D	NOT APPLICABLE		D	NOT APPLICABLE			

PANS OPS

1 Not Authorized South of Airport.