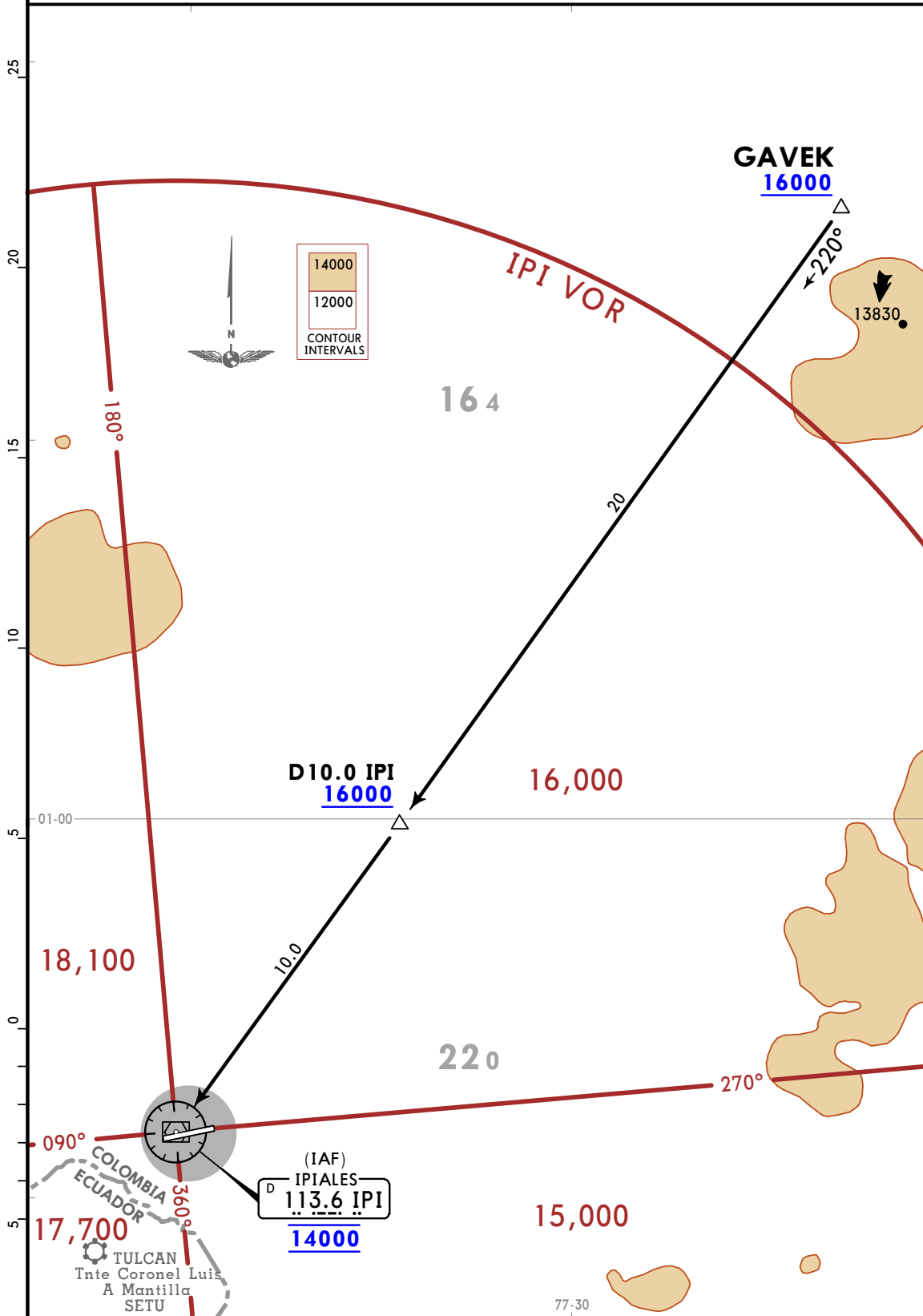


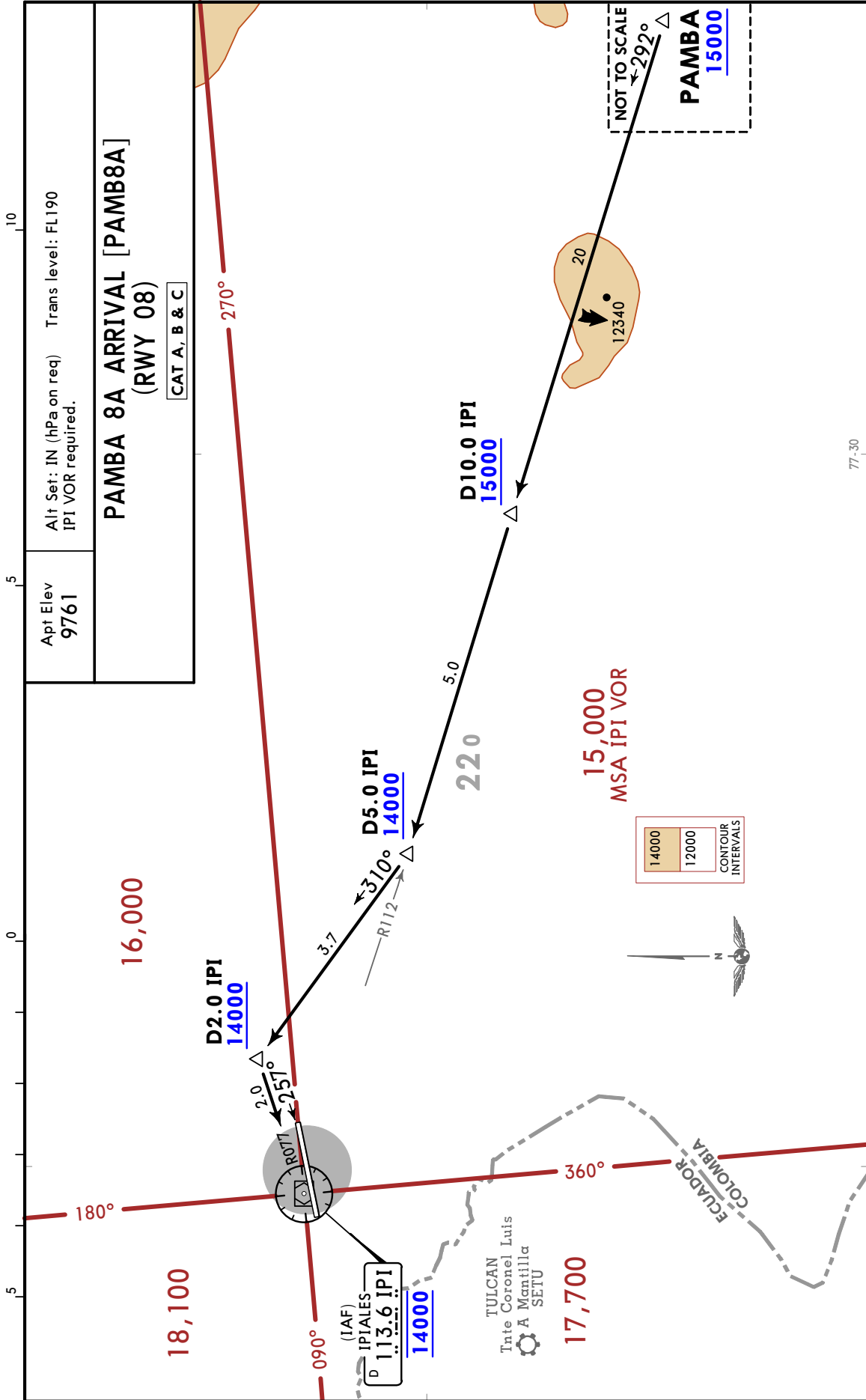
Apt Elev
9761

Alt Set: IN (hPa on req) Trans level: FL190
IPI DME required.

GAVEK 5A ARRIVAL [GAVE5A]
(RWY 08)

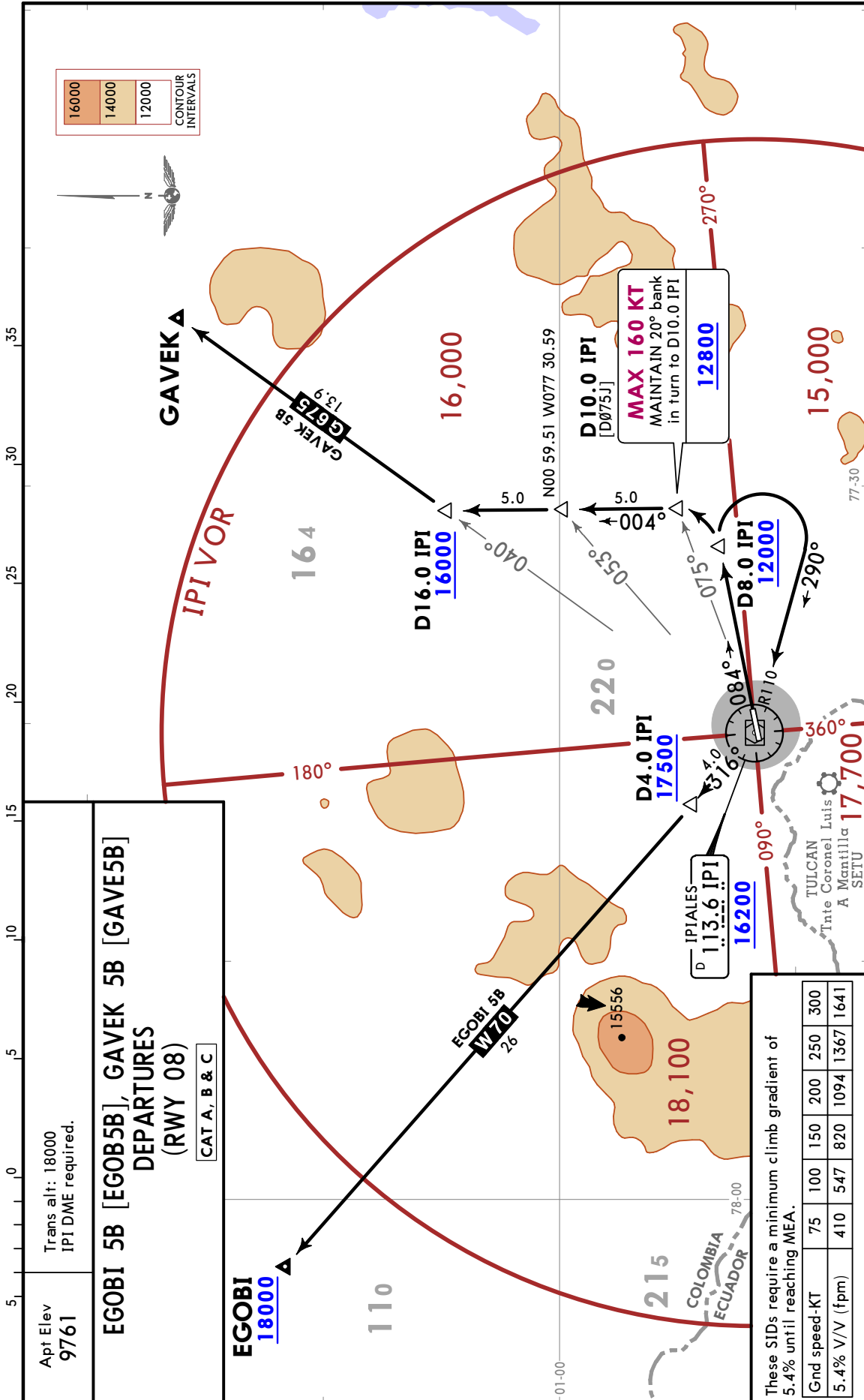
CAT A, B & C

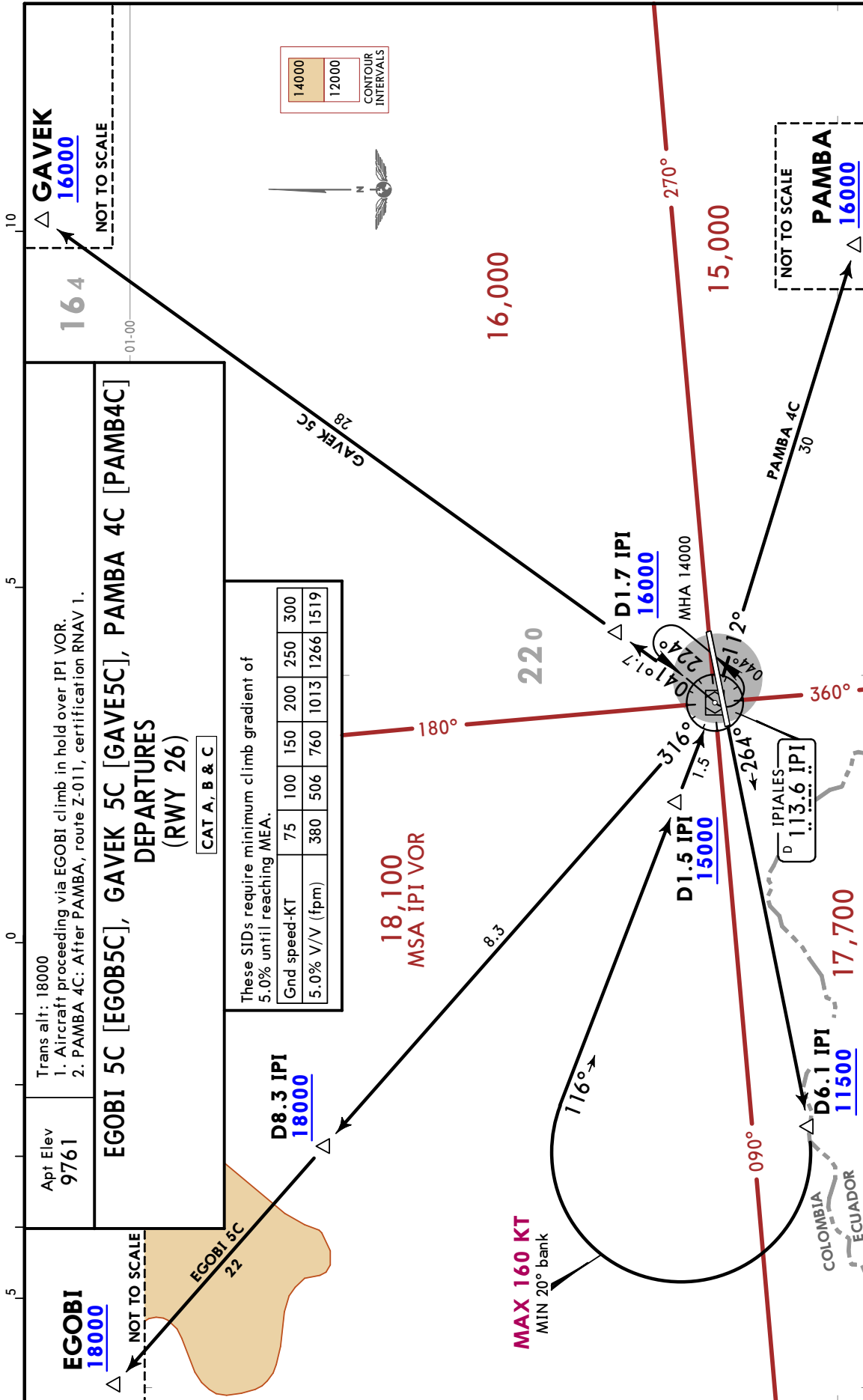




CHANGES: Procedure renumbered, D2.0 IPI altitude restriction, bearings, MSA.

© JEPPESEN, 2021. ALL RIGHTS RESERVED.

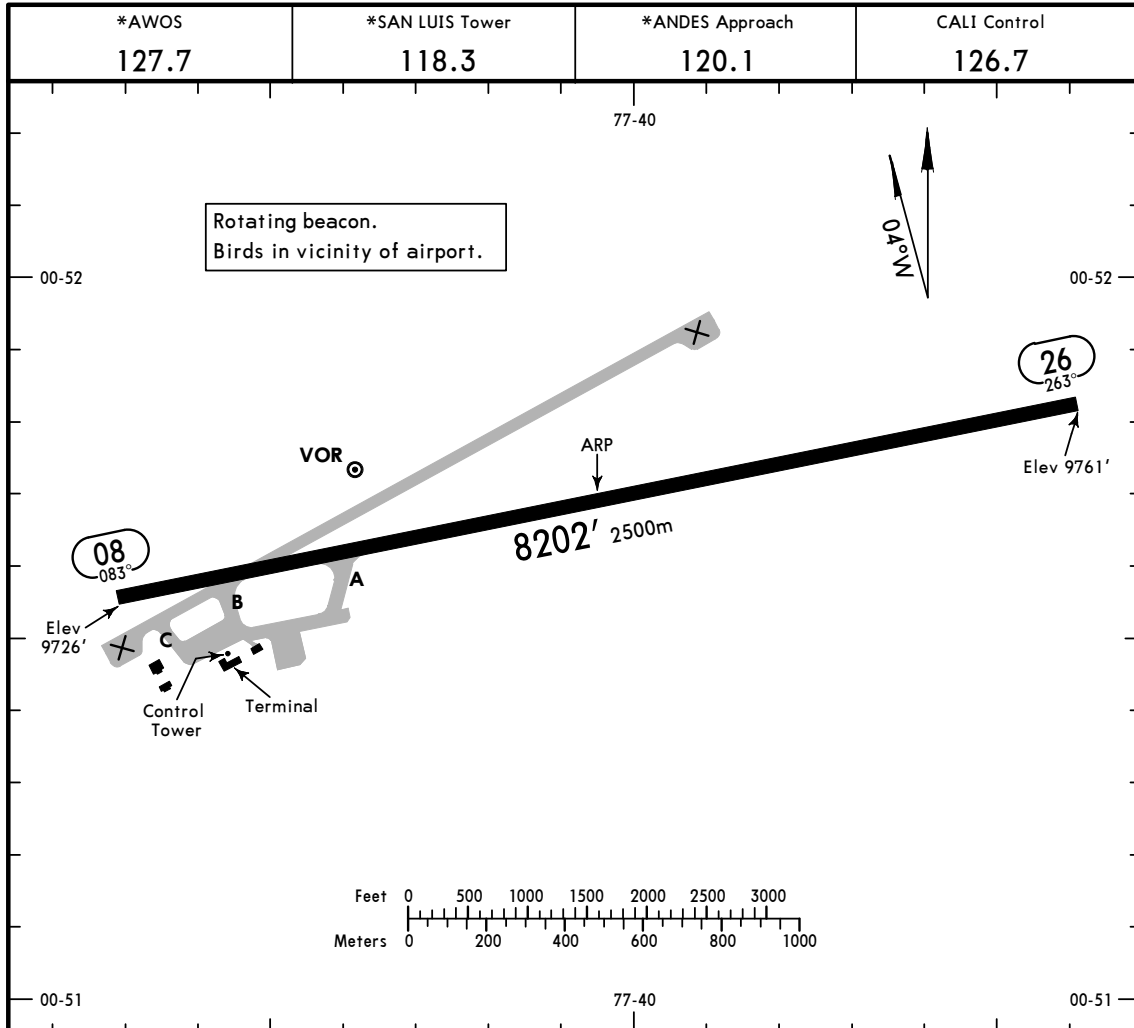




SKIP/IPI
 Apt Elev **9761'**
 N00 51.7 W077 40.1

JEPPESEN
 24 AUG 18 (10-9)

IPIALES, COLOMBIA
SAN LUIS



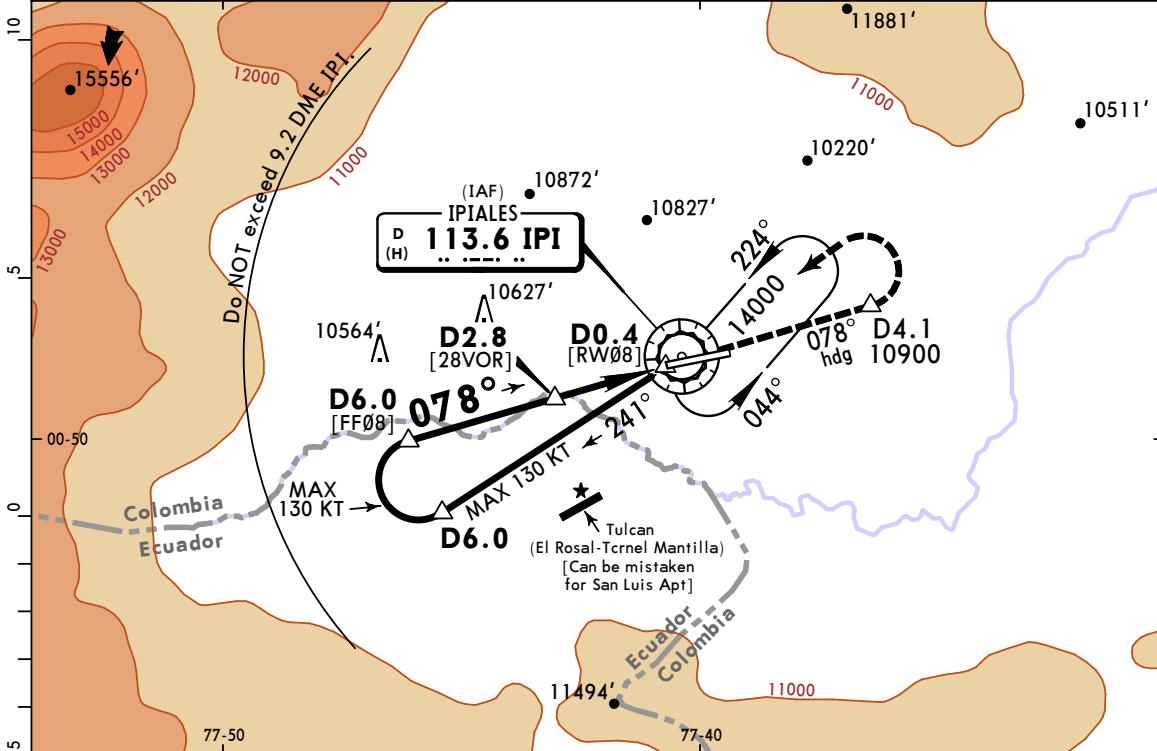
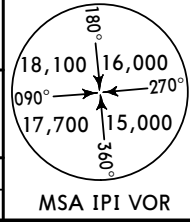
ADDITIONAL RUNWAY INFORMATION					
RWY	PAPI-L (angle 3.00°)	USABLE LENGTHS			WIDTH
		Threshold	Glide Slope	TAKE-OFF	
08 26					118' 36m
TAKE-OFF					
All Rwys					
Standard					
1 & 2 Eng			3 & 4 Eng		
1600m			800m		

CHANGES: AWOS added.

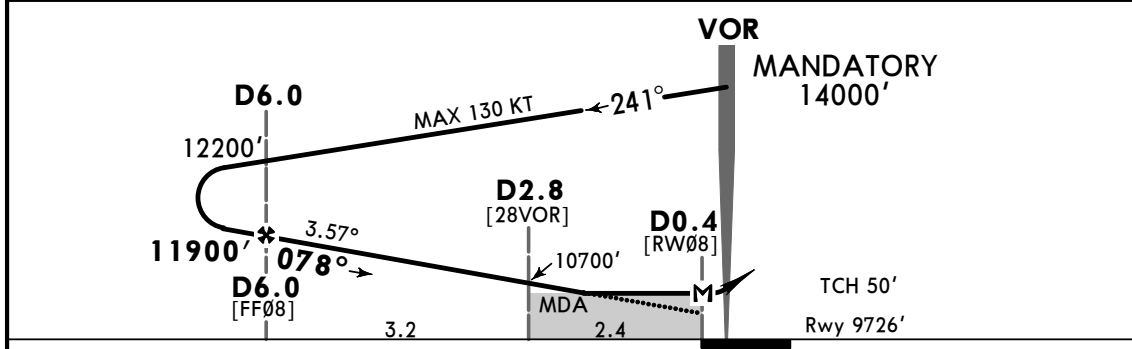
© JEPPESEN, 2002, 2018. ALL RIGHTS RESERVED.

**SKIP/IPI
SAN LUIS**

*AWOS 127.7		CALI Control 126.7		*ANDES Approach 120.1		*SAN LUIS Tower 118.3	
VOR IPI 113.6	Final Apch Crs 078°	D6.0 11900' (2174')	MDA(H) 10320' (594')	Apt Elev 9760' Rwy 9726'			
MISSED APCH: Maintain heading 078° until crossing D4.1 IPI at 10,900' or above. Then turn LEFT to IPI VOR holding at 14,000'. Missed Apch Climb Gradient Mim 5.0%.							
Alt Set: IN (hPa on req)		Trans level: FL 190		Trans alt: 18000'			
1. IPI DME required. 2. CAUTION: Do not exceed 9.2 DME IPI.						MSA IPI VOR	



IPI DME	6.0	5.0	4.0	3.0	2.0
ALTITUDE	11900'	11520'	11150'	11780'	10400'



Gnd speed-Kts	70	90	100	120	140	160	PAPI-L	078° hdg	10900' ↑	IPI D4.1
Descent Angle 3.57°	442	569	632	758	885	1011				
MAP at D0.4										
FAF to MAP	5.6	4:48	3:44	3:22	2:48	2:24	2:06			

STRAIGHT-IN LANDING RWY 08			CIRCLE-TO-LAND		
CDFA MDA(H) 10320' (594')		non-CDFA MDA(H) 10320' (594')		Prohibited North of Airport	
A	2700m	2900m	Max Kts	MDA(H)	
B			100	10980' (1220') - 5000m	
C			135		
D	NOT APPLICABLE	NOT APPLICABLE	C	NOT APPLICABLE	
			D		