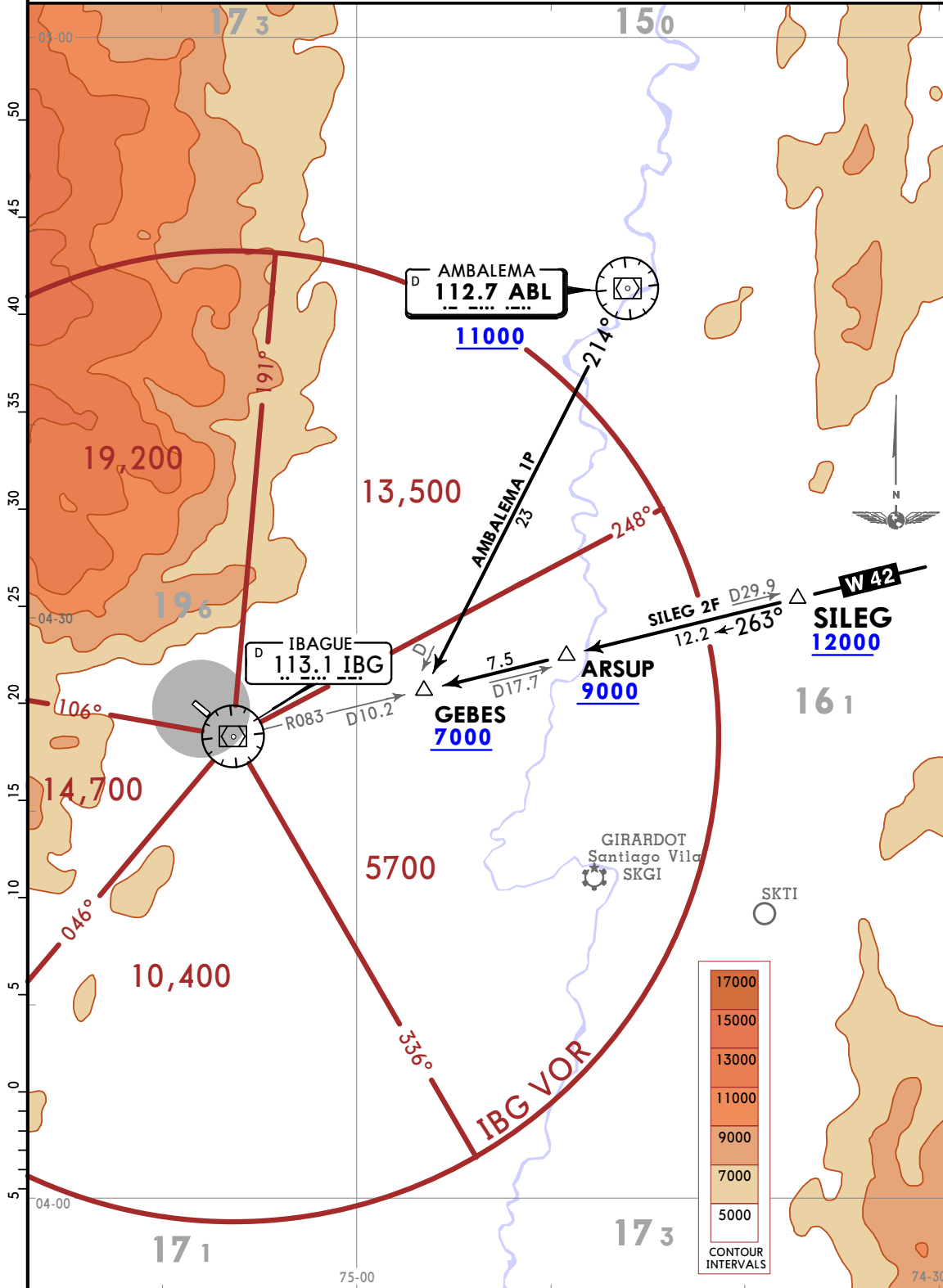


Apt Elev
3061

Alt set: IN (hPa on req)
Trans level: FL190
ABL VOR and IBG VOR required.

AMBALEMA 1P [ABL1P], SILEG 2F [SILE2F]
ARRIVALS
(RWY 32)

CAT A, B & C

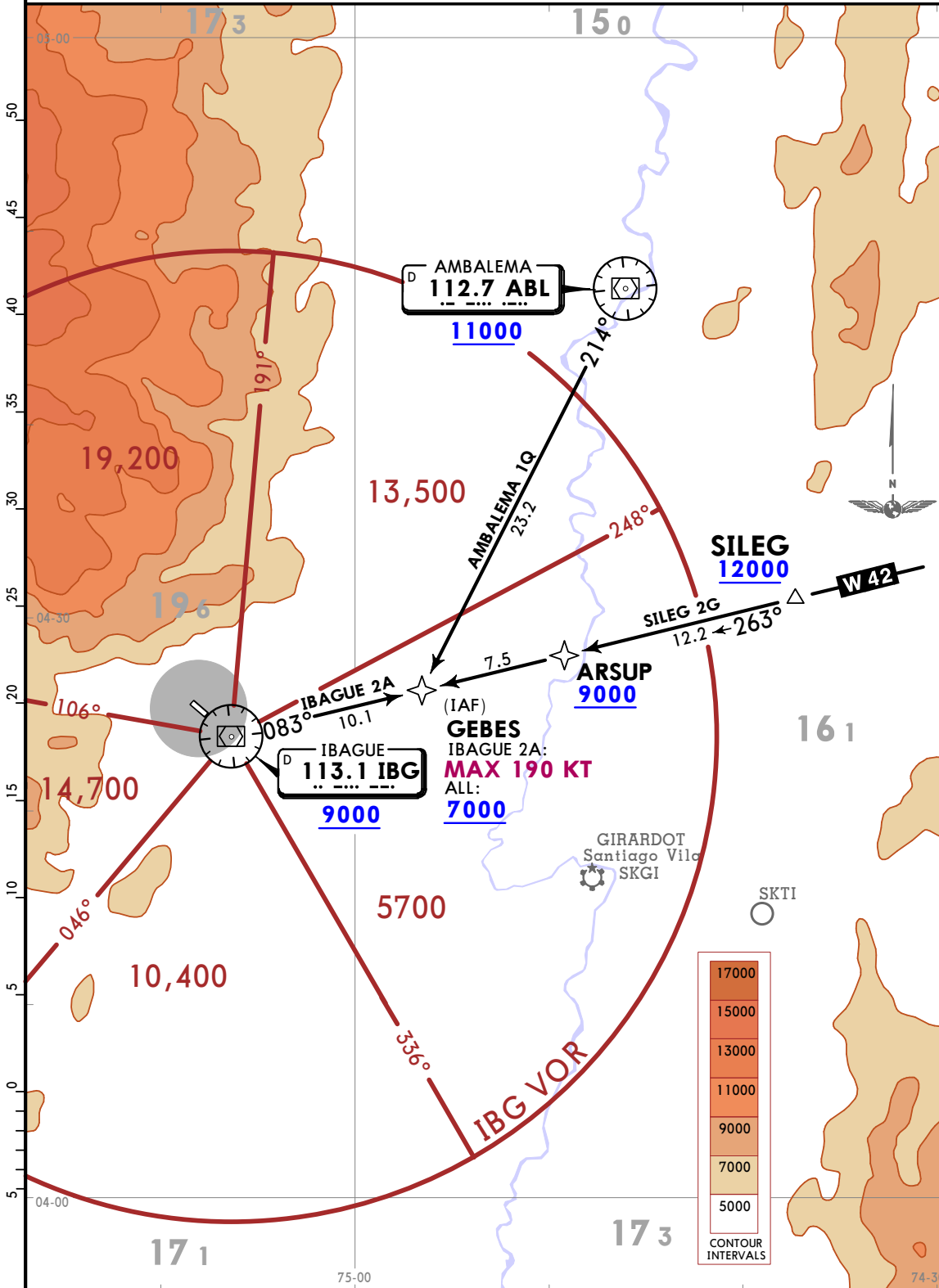


Apt Elev
3061

Alt set: IN (hPa on req)
Trans level: FL190
1. RNP1 or RNAV1.
2. GNSS required.

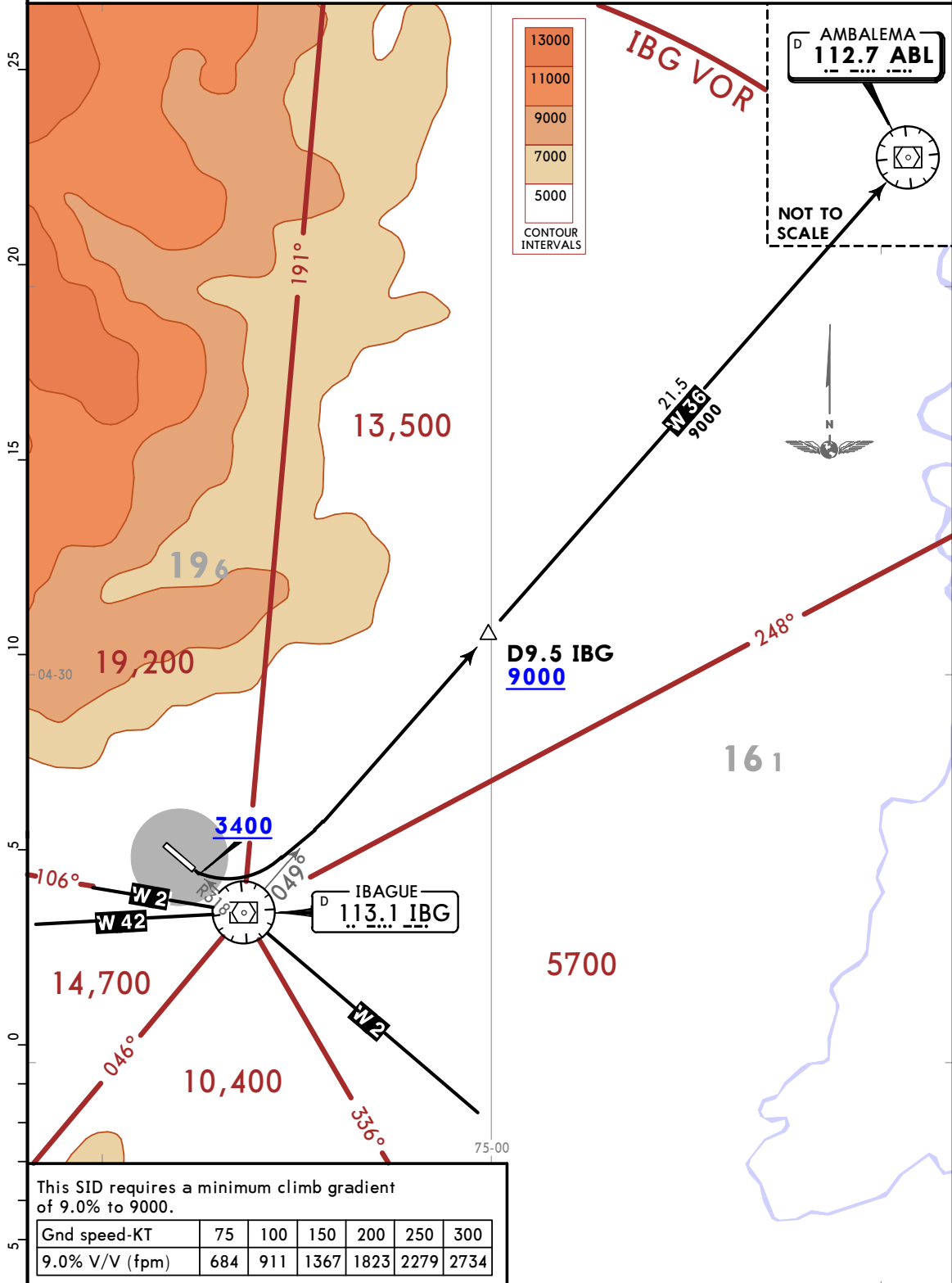
AMBALEMA 1Q [ABL1Q], IBAGUE 2A [IBG2A], SILEG 2G [SILE2G]
RNAV (RNP) ARRIVALS
(RWY 32)

CAT A, B & C



Apt Elev 3061 Trans alt: 18000
The climb gradient of 9% has been established for operational purposes.

AMBALEMA 1H DEPARTURE [ABL1H]
(RWY 14)
CAT A, B & C



This SID requires a minimum climb gradient of 9.0% to 9000.

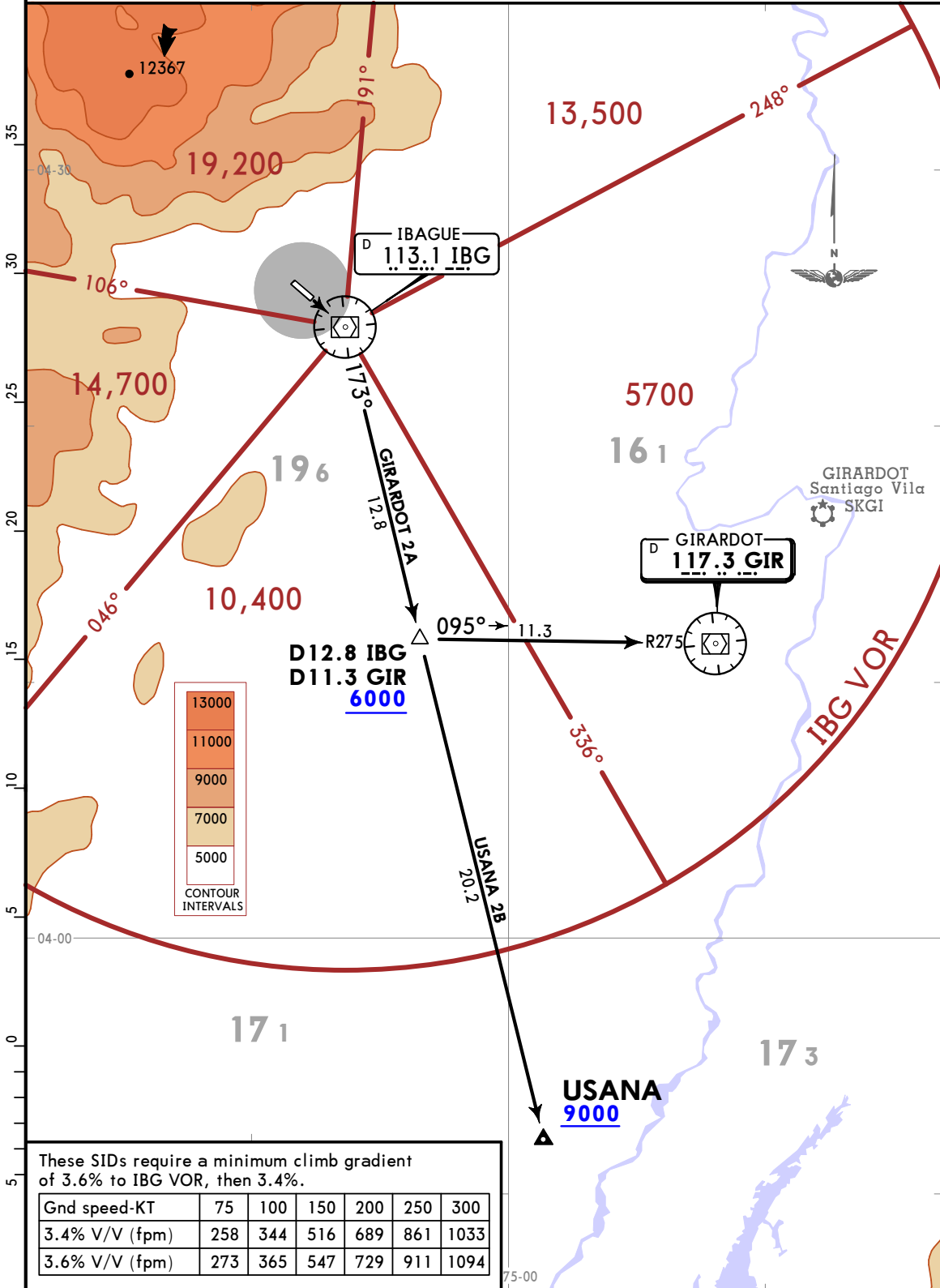
Gnd speed-KT	75	100	150	200	250	300
9.0% V/V (fpm)	684	911	1367	1823	2279	2734

INITIAL CLIMB

MAINTAIN runway heading to 3400, then turn LEFT and intercept W-36.

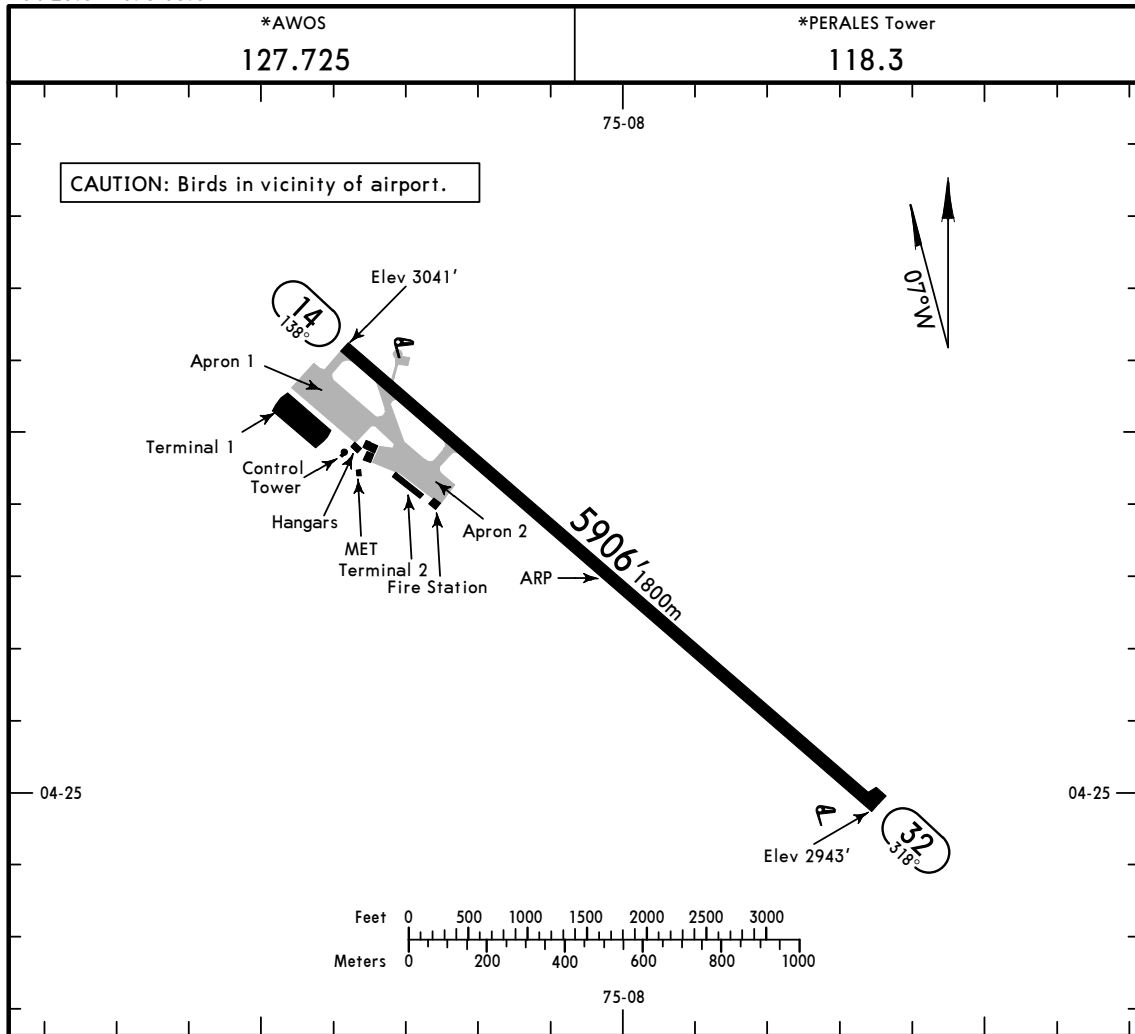
Apt Elev 3061 Trans alt: 18000

GIRARDOT 2A [GIR2A], USANA 2B [USAN2B]
DEPARTURES
(RWY 14)
CAT A, B & C



These SIDs require a minimum climb gradient of 3.6% to IBG VOR, then 3.4%.

Gnd speed-KT	75	100	150	200	250	300
3.4% V/V (fpm)	258	344	516	689	861	1033
3.6% V/V (fpm)	273	365	547	729	911	1094



ADDITIONAL RUNWAY INFORMATION

RWY	LANDING BEYOND	USABLE LENGTHS		TAKE-OFF	WIDTH
		Threshold	Glide Slope		
14	HIRL				98' 30m
32	HIRL PAPI (angle 3.0°)				

TAKE-OFF & DEPARTURE PROCEDURE

All Rwy's		
1 Take-off Alternate Airport Filed		STD
RL & CL or RCLM		
1 Eng	600' - 3000m	
2 Eng	1 hour alternate (1 Eng inop) 500m	1600m
3 & 4 Eng	2 hour alternate (1 Eng inop) 500m	800m

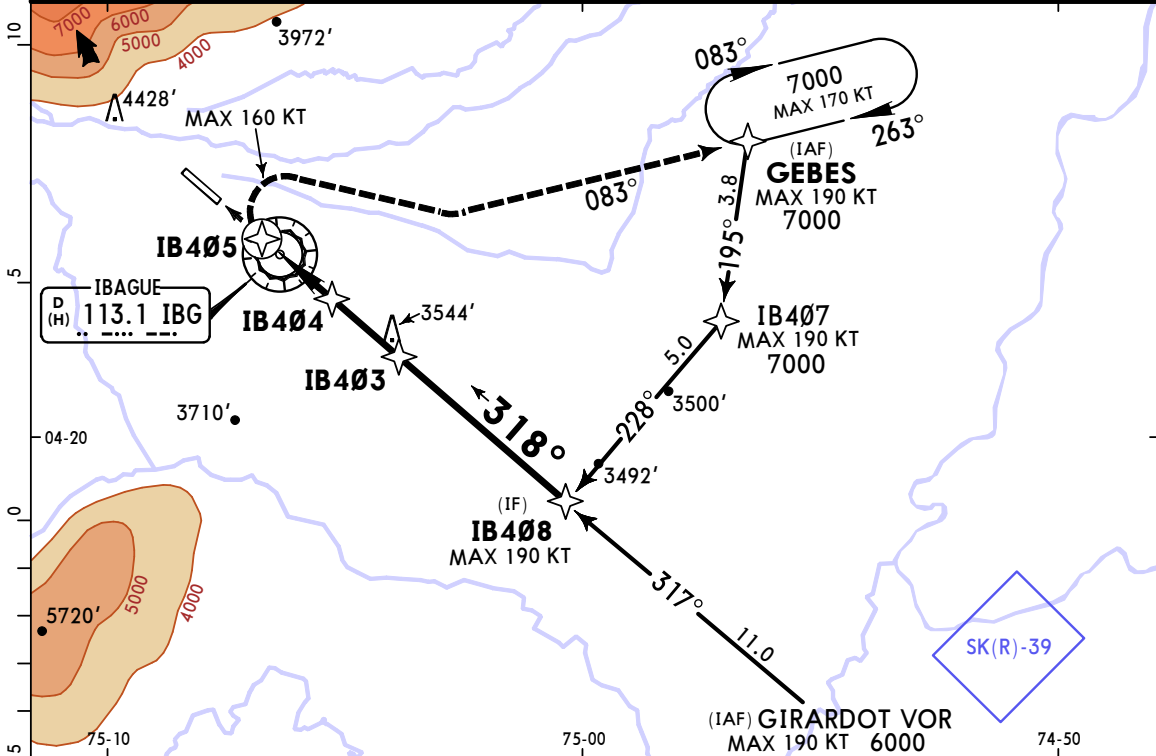
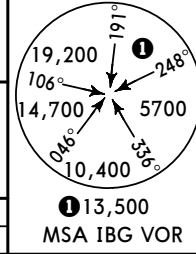
1 With appropriate approval.
 DEPARTURE PROCEDURE: IFR departures must comply with published SID's.

SKIB/IBE
PERALES

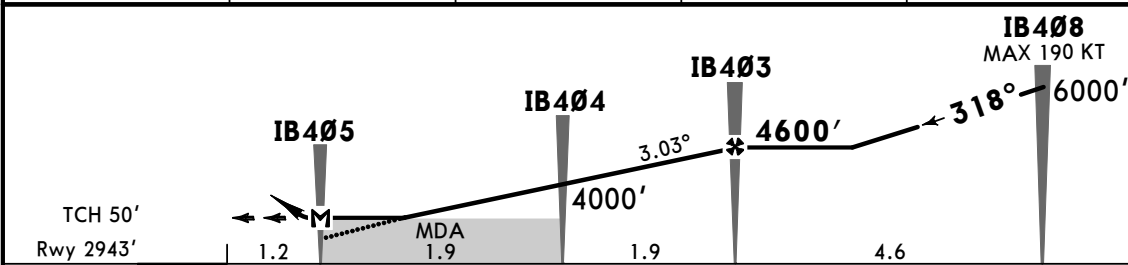
JEPPESEN
15 OCT 21 (12-1)

MISSED APCH CLIMB GRADIENT MIM 3.4%
IBAGUE, COLOMBIA
CAT A, B & C RNP Rwy 32

*AWOS 127.725		BOGOTA Approach (R) 119.65		*PERALES Tower 118.3	
RNAV	Final Apch Crs 318°	IB403 4600' (1657')	MDA(H) 3380' (437')	Apt Elev 3061' Rwy 2943'	
MISSED APCH: Climb with minimum gradient of 3.4% for crossing GEBES at 6200' or above. Continue climbing to 7000' within holding pattern. MAX 160 KT until completion of 20° min bank turn.					
RNP Apch	Alt Set: IN (hPa on req)	Trans level: FL 190	Trans alt: 18000'		
PAPI and approach angle not coincident.					



DIST to THR	2.0	3.0	4.0	5.0
ALTITUDE	3635'	3956'	4278'	4600'



Gnd speed-Kts	70	90	100	120	140	160	PAPI	6200'	GEBES
Descent Angle 3.03°	375	482	536	643	750	858			
MAP at IB405	5.0	4:17	3:20	3:00	2:30	2:09			

STRAIGHT-IN LANDING RWY 32				CIRCLE-TO-LAND			
LNAV				Max Kts			
MDA(H) 3380' (437')				MDA(H)			
A	2200m			100	3900' (839') -3800m		
B	2400m			130	4600' (1539') -5000m		
C	NOT APPLICABLE			C	NOT APPLICABLE		
D	NOT APPLICABLE			D	NOT APPLICABLE		

PANS OPS

CHANGES: Topo updated.

© JEPPESEN, 2020, 2021. ALL RIGHTS RESERVED.

SKIB/IBE
PERALES

JEPPESEN

MISSED APCH CLIMB
GRADIENT MIN 3.4%

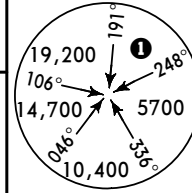
IBAGUE, COLOMBIA
CAT A, B & C VOR Rwy 32

15 OCT 21

13-1

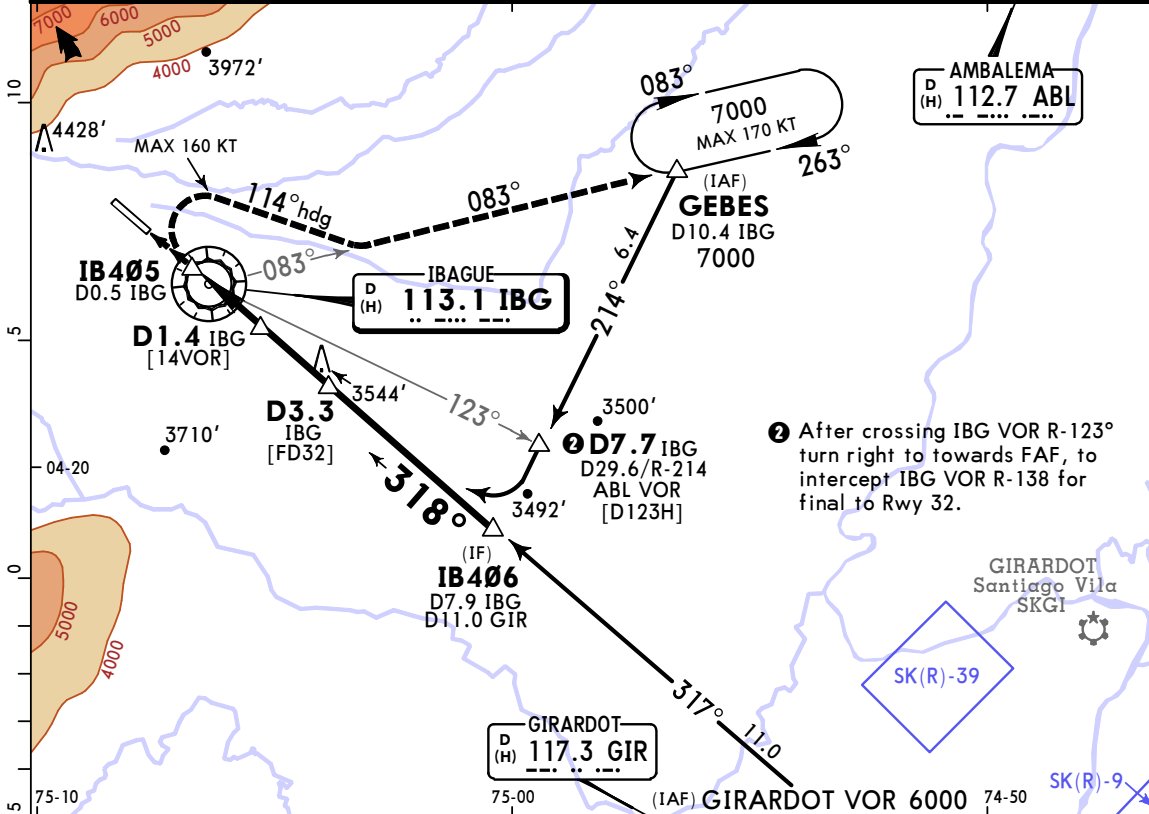
CAT A, B & C

*AWOS 127.725		BOGOTA Approach (R) 119.65		*PERALES Tower 118.3	
VOR IBG 113.1	Final Apch Crs 318°	D3.3 IBG 4600' (1657')	MDA(H) 3380' (437')	Apt Elev 3061' Rwy 2943'	
<p>MISSED APCH: Turn RIGHT heading 114° to intercept and fly IBG VOR R-083 outbound. Climb with minimum gradient of 3.4% for crossing GEBES at 6200' or above. Continue climbing to 7000' within holding pattern. MAX 160 KT until completion of 20° min bank turn.</p>					
Alt Set: IN (hPa on req)		Trans level: FL 190		Trans alt: 18000'	
1. IBG and GIR VOR required. 2. PAPI and apch path not coincident.					

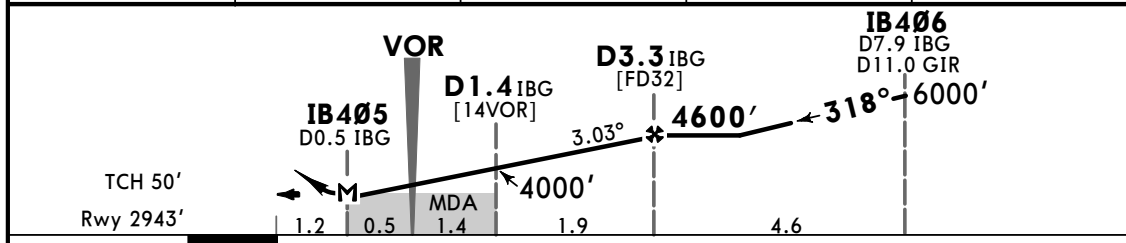


13,500

MSA IBG VOR



IBG DME	IBG VOR	1.4	2.0	3.3
ALTITUDE	3540'	4000'	4184'	4600'



Gnd speed-Kts	70	90	100	120	140	160	PAPI	6200'	114° hdg
Descent Angle 3.03°	375	482	536	643	750	858			
MAP at IB405									
FAF to MAP	5.0	4:17	3:20	3:00	2:30	2:09	1:53		

STRAIGHT-IN LANDING RWY 32				CIRCLE-TO-LAND			
MDA(H) 3380' (437')				Max Kts			
A	2200m			100	3900' (839') -3800m		
B	2400m			130	4600' (1539') -5000m		
C	2400m			C	NOT APPLICABLE		
D	NOT APPLICABLE			D	NOT APPLICABLE		

CHANGES: Topo updated.

© JEPPESEN, 1999, 2021. ALL RIGHTS RESERVED.