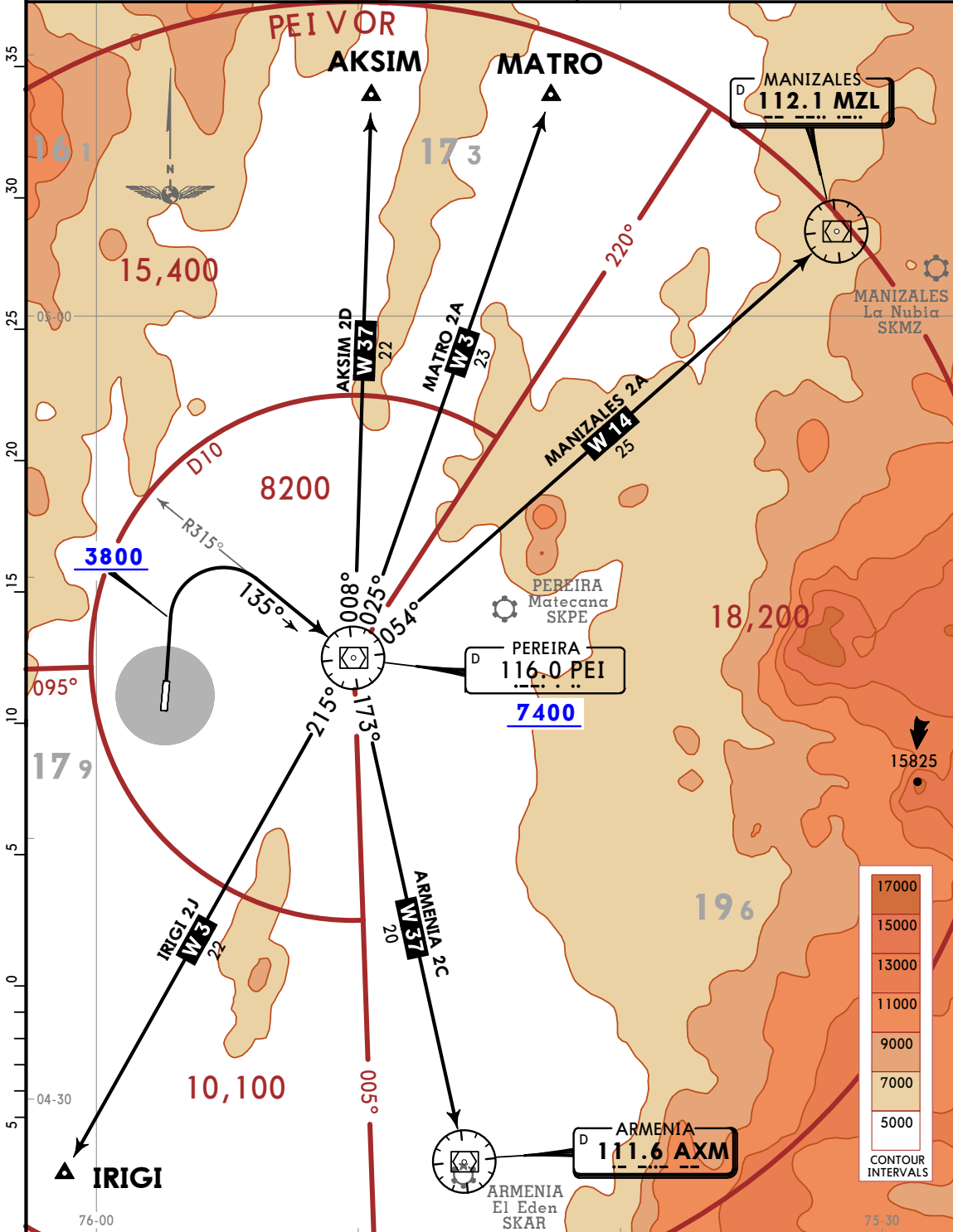


Apt Elev 2981	Trans alt: 18000					
These SIDs require a minimum climb gradient of 6.5% until PEI VOR, then 5.0% until reaching MEA of the route.						
Gnd speed-KT	75	100	150	200	250	300
5.0% V/V (fpm)	380	506	760	1013	1266	1519
6.5% V/V (fpm)	494	658	987	1317	1646	1975

AKSIM 2D [AKSI2D]  
ARMENIA 2C [AXM2C]  
IRIGI 2J [IRIG2J]  
MANIZALES 2A [MZL2A]  
MATRO 2A [MATR2A]  
DEPARTURES  
(RWY 01)

CAT A, B, C & D



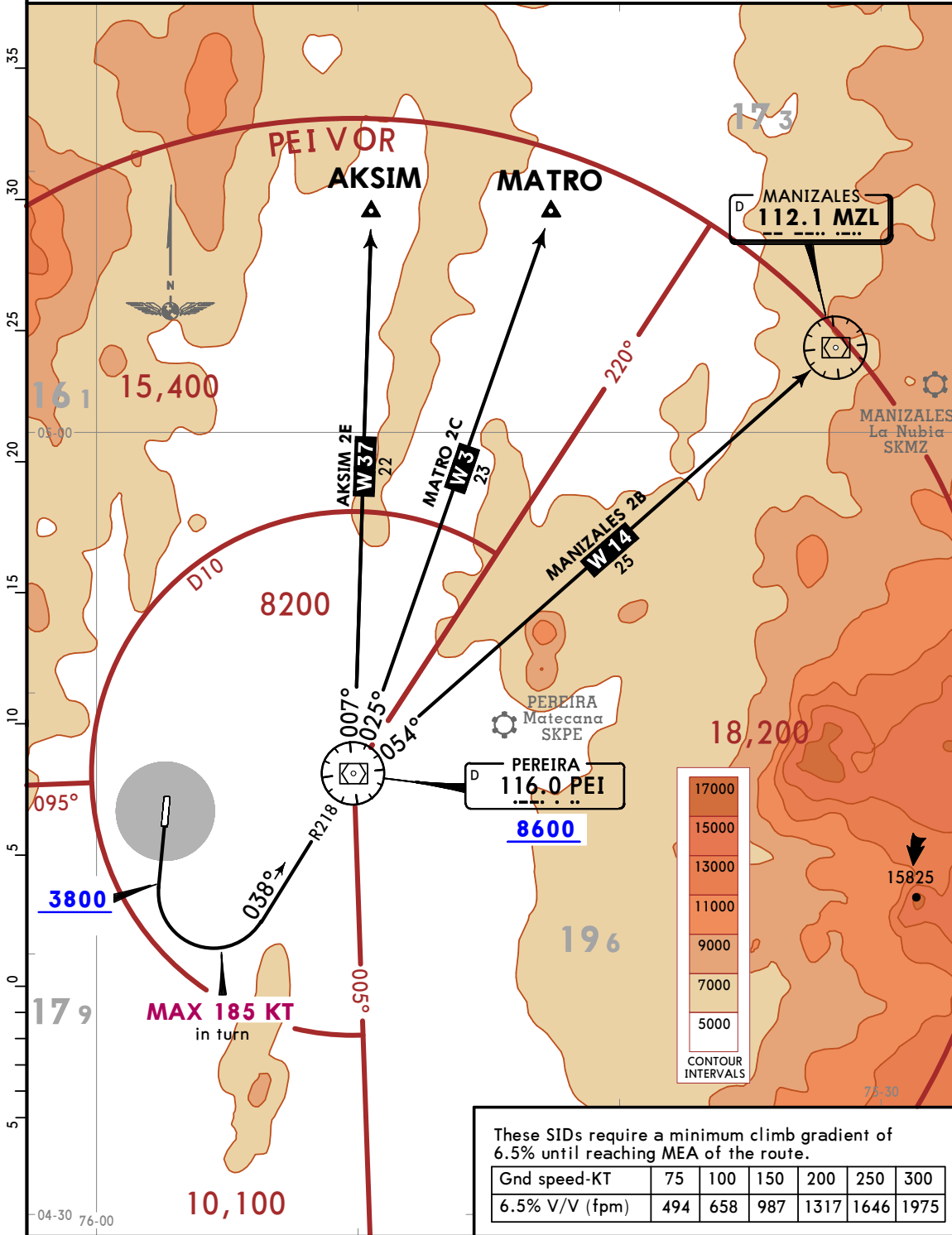
Apt Elev  
2981

Trans alt: 18000

AKSIM 2E [AKSI2E]  
MANIZALES 2B [MZL2B]  
MATRO 2C [MATR2C]  
DEPARTURES  
(RWY 19)

**SPEED: MAX 185 KT IN TURN**

CAT A, B, C & D

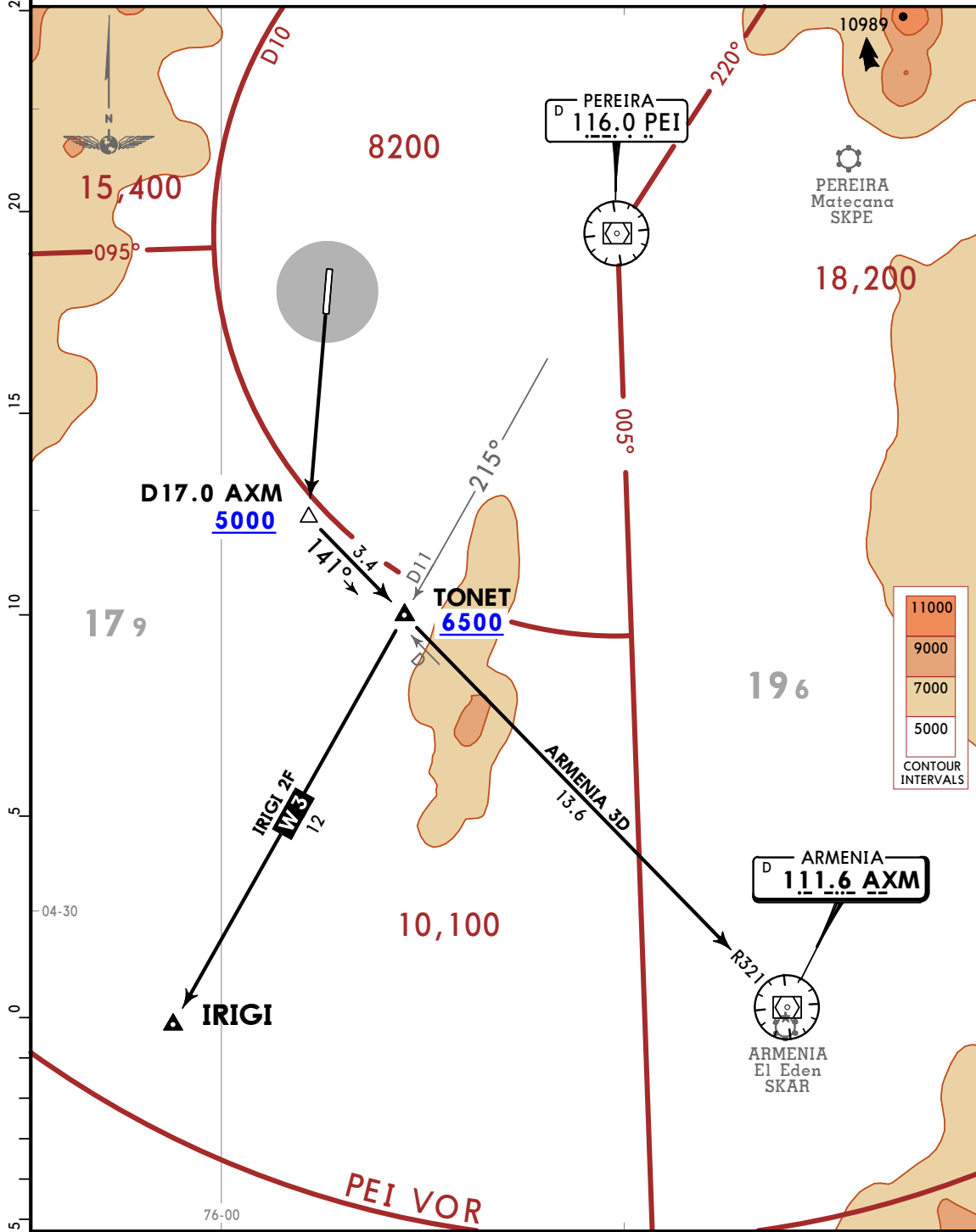


Apt Elev  
**2981**

- Trans alt: 18000  
1. ARMENIA 3D: AXM VOR/DME required.  
2. IRIGI 2F: AXM and PEI VOR/DME required.

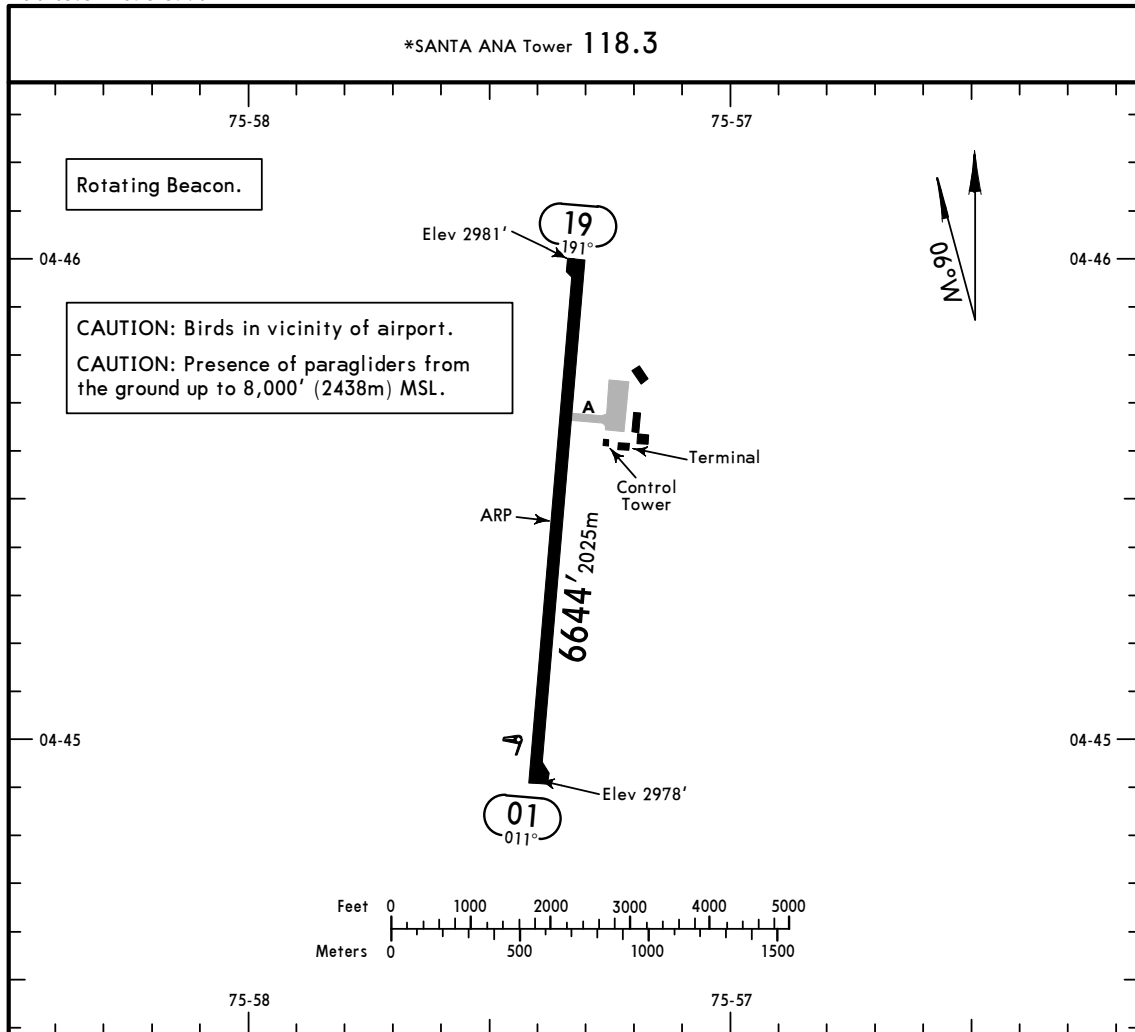
**ARMENIA 3D [AXM3D]**  
**IRIGI 2F [IRIG2F]**  
**DEPARTURES**  
**(RWY 19)**

**CAT A, B, C & D**



These SIDs require minimum climb gradients:  
ARMENIA 3D: 6.5% to AXM VOR.  
IRIGI 2F: 6.5% to IRIGI.

Gnd speed-KT	75	100	150	200	250	300
6.5% V/V (fpm)	494	658	987	1317	1646	1975



ADDITIONAL RUNWAY INFORMATION

RWY	LANDING BEYOND	USABLE LENGTHS		WIDTH
		Threshold	Glide Slope	
01 19	RL PAPI-L (angle 3.00°)			131' 40m

1 TAKE-OFF RUN AVAILABLE

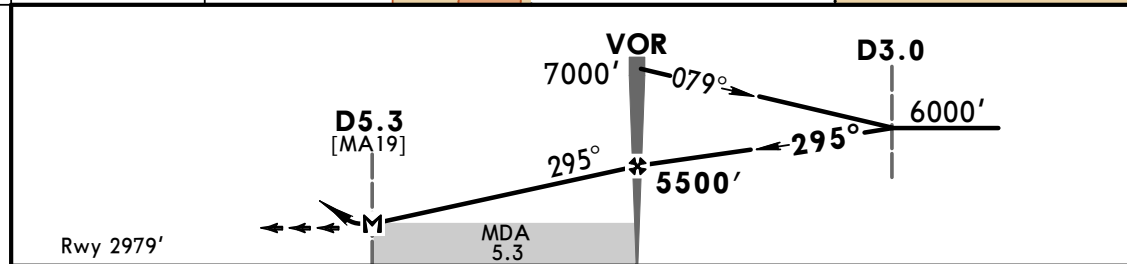
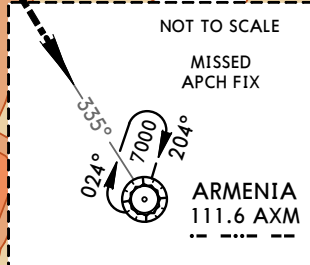
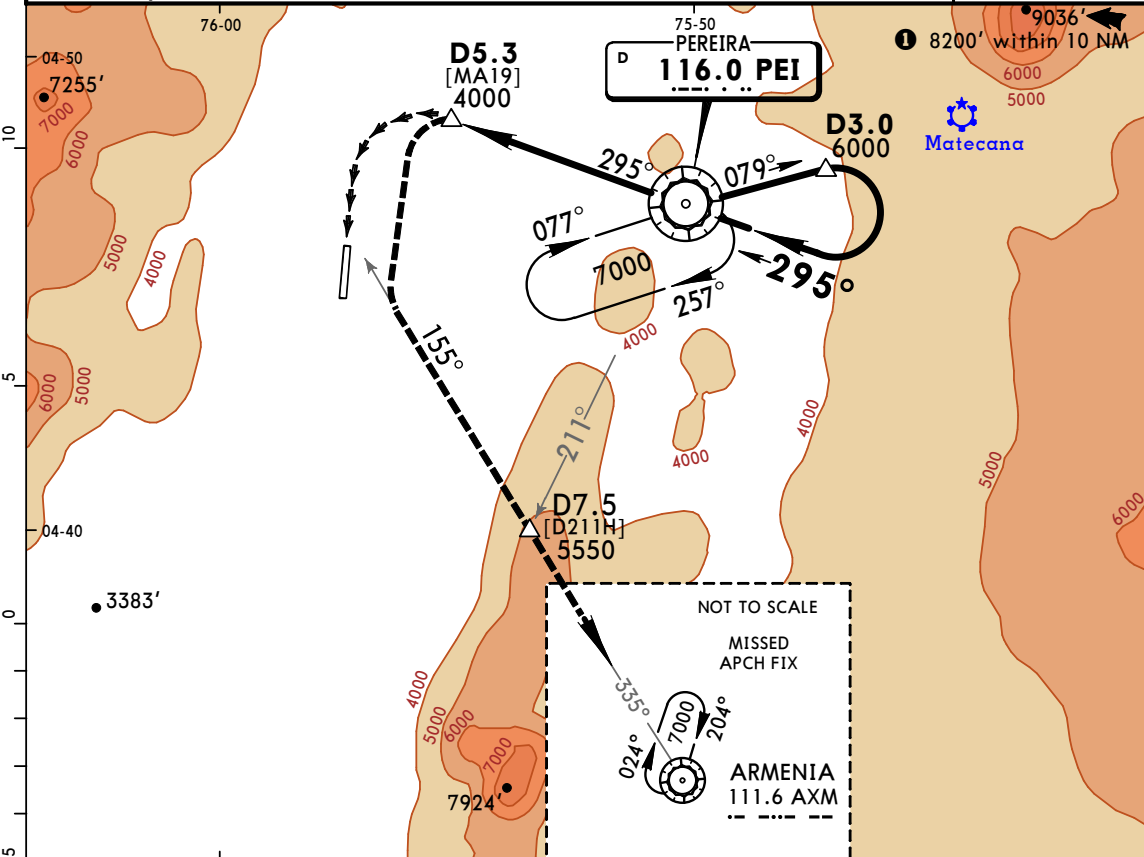
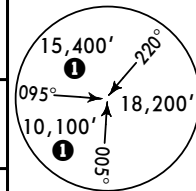
RWY 19:

Full length 6644' (2025m)  
 Twy A 4593' (1400m)

TAKE-OFF	
All Rwys	
1 Eng	450'-2000m
2 Eng	1 hour take-off alternate airport filed (1 Eng inop) 500m
3 & 4 Eng	2 hour take-off alternate airport filed (1 Eng inop) 500m

1 With appropriate approval.

*PEREIRA Approach 120.7			*SANTA ANA Tower 118.3		
VOR PEI <b>116.0</b>	Final Apch Crs <b>295°</b>	Minimum Alt VOR <b>5500'</b> (2521')	MDA(H) Refer to Minimums	Apt Elev 2979' Rwy 2979'	
<b>MISSED APCH: Turn LEFT climbing inbound on AXM VOR R-155 to AXM VOR to 7000'. Cross PEI VOR R-211 at or above 5550'.</b>					
Alt Set: IN (MB on req)		Trans level: FL 190		Trans alt: 18000'	
<b>1. DME required. 2. Maximum IAS between FAF &amp; MAP 160 Kts.</b>					



Gnd speed-Kts	70	90	100	120	140	160	PAPI-L	7000' AXM LT on 111.6 R-155
MAP at D5.3 or FAF to MAP	5.3	4:33	3:32	3:11	2:39	2:16		

<b>1 CIRCLE-TO-LAND</b> Missed Apch Climb Gradient Mim 3.4%		Max Kts	MDA(H)
		A 100	4030'(1051') -5000m
B 135			
C 180			
D 205			