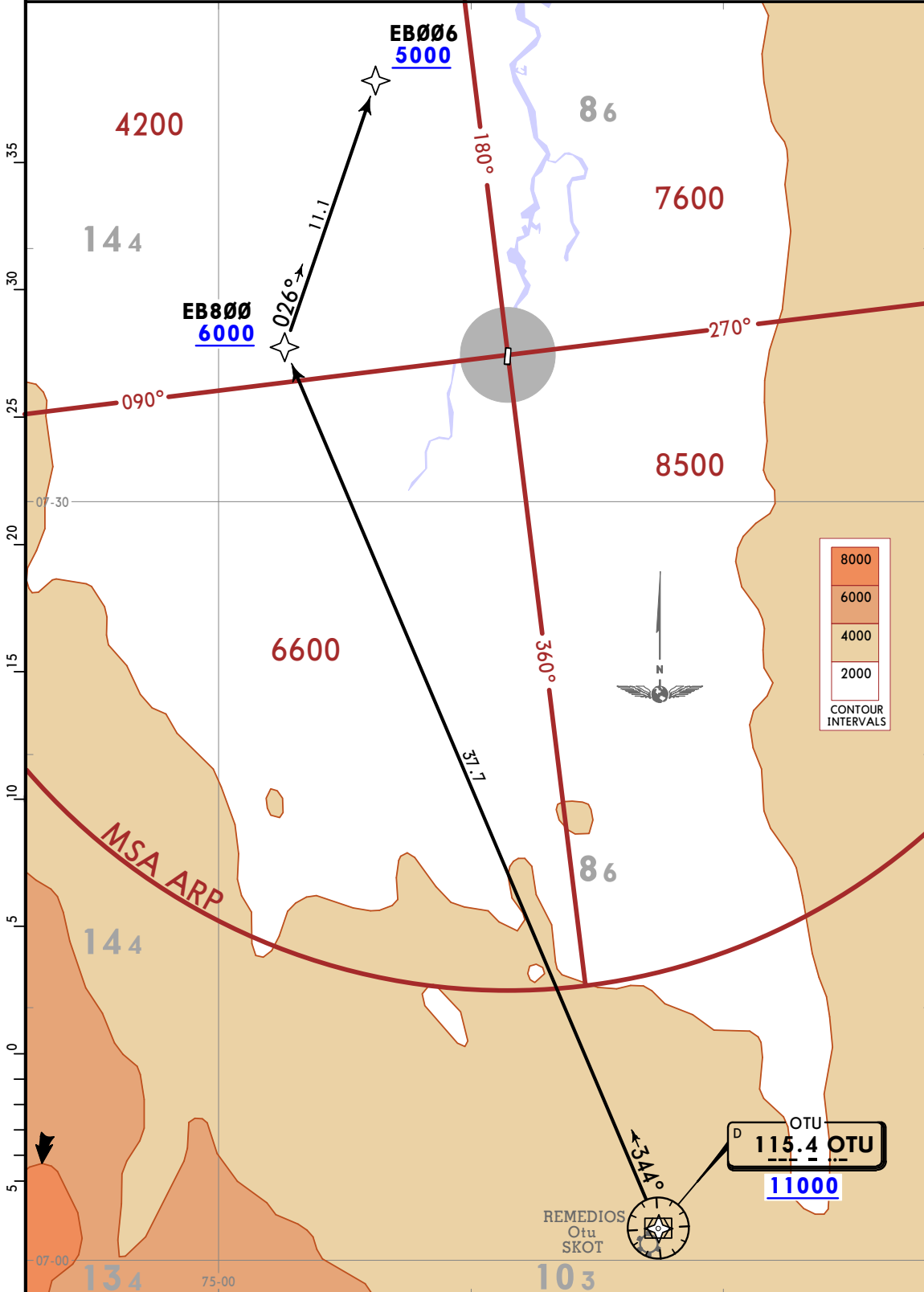


Apt Elev
177

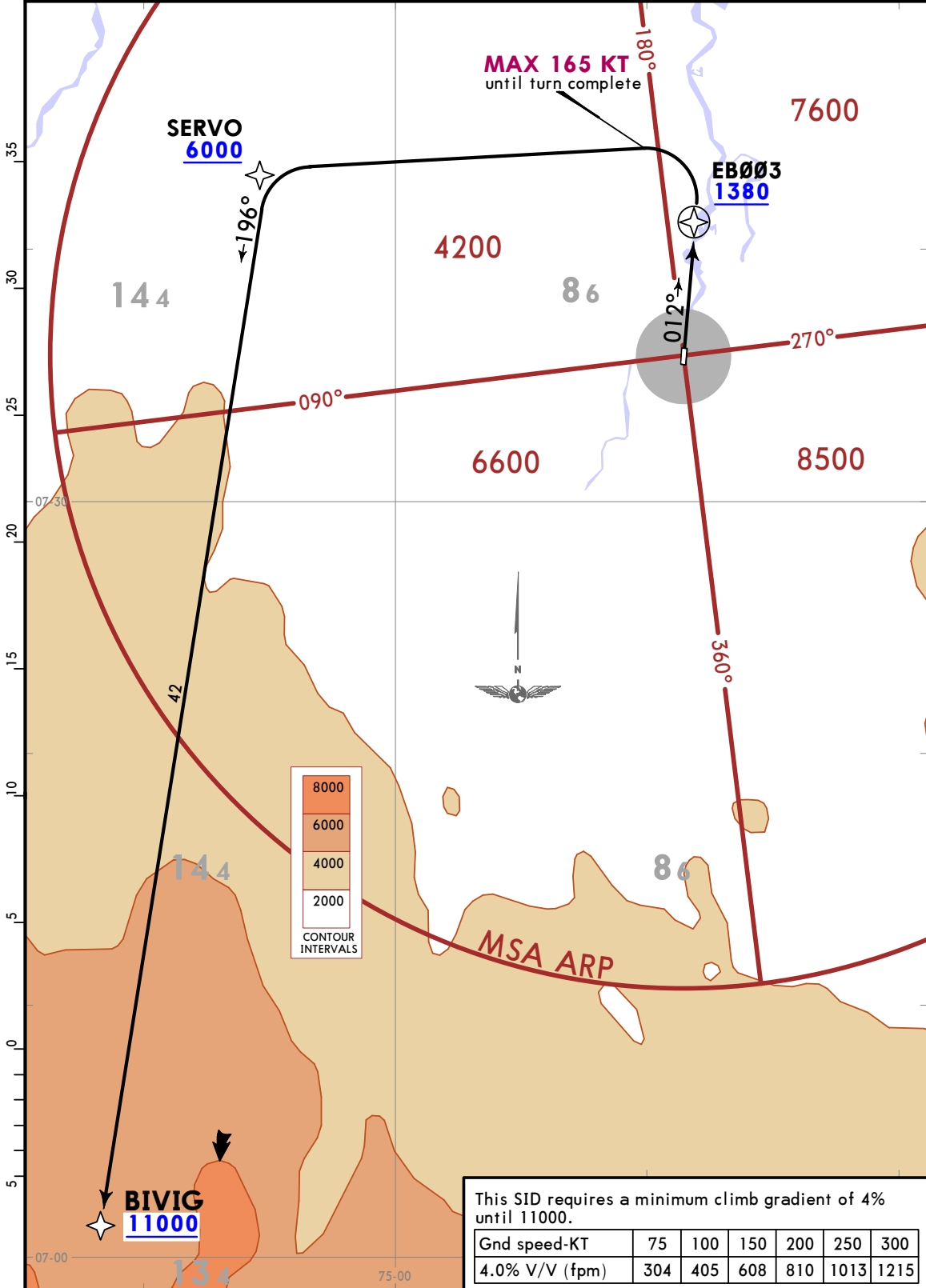
Alt Set: IN (hPa on req) Trans level: FL190
1. RNAV 1.
2. GNSS required.

OTU 1D [OTU1D]
RNAV (GNSS) ARRIVAL
(RWY 19)
CAT A, B & C

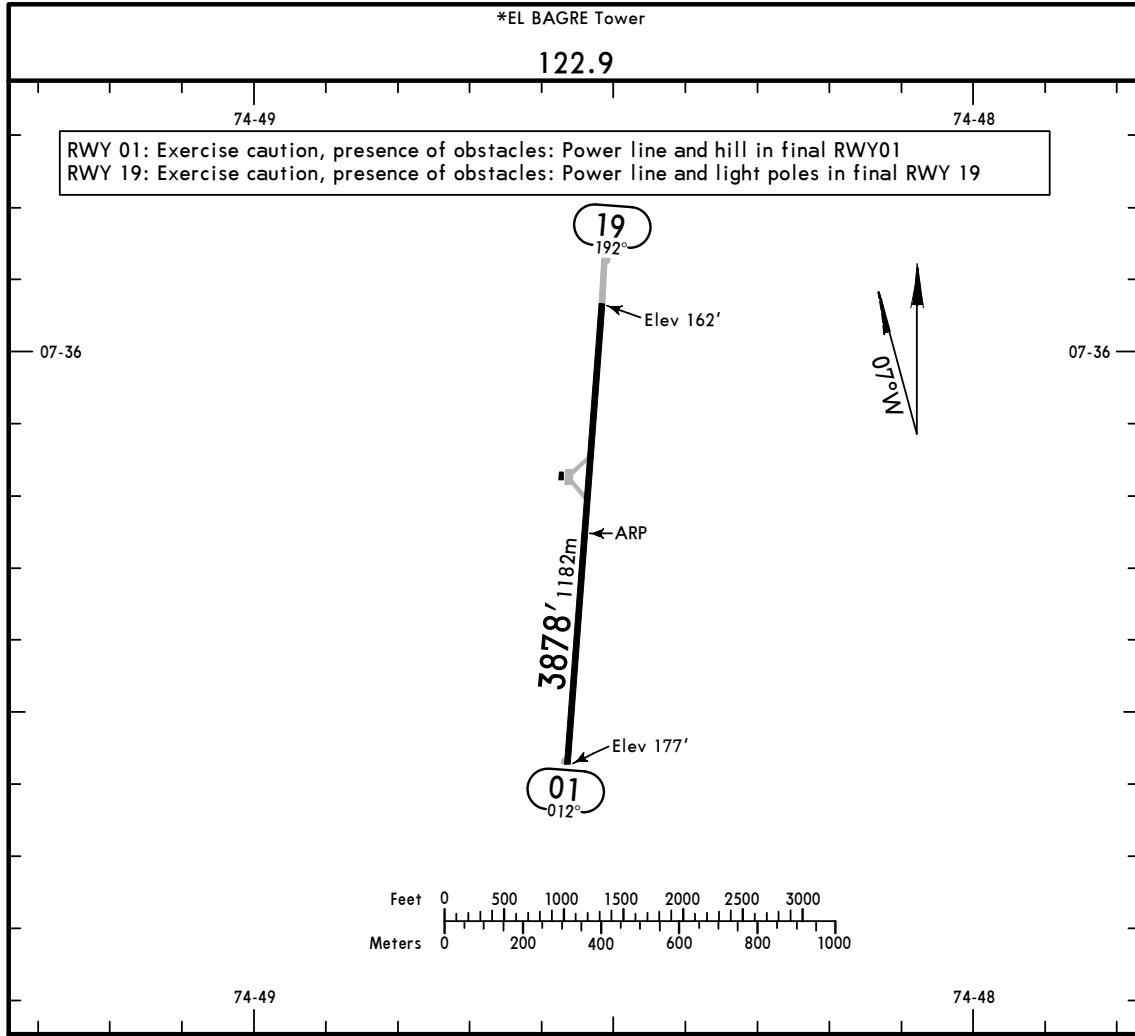


Apt Elev 177	Trans alt: 18000 1. RNAV 1. 2. GNSS required.
-----------------	---

BIVIG 1D [BIVI1D]
RNAV (GNSS) DEPARTURE
(RWY 01)
CAT A, B & C



CHANGES: New airport.



ADDITIONAL RUNWAY INFORMATION

RWY	USABLE LENGTHS		TAKE-OFF	WIDTH
	LANDING	BEYOND		
	Threshold	Glide Slope		
01				49'
19				15m

TAKE-OFF

All Rwys

Standard

1 & 2 Eng

3 & 4 Eng

1600m

800m

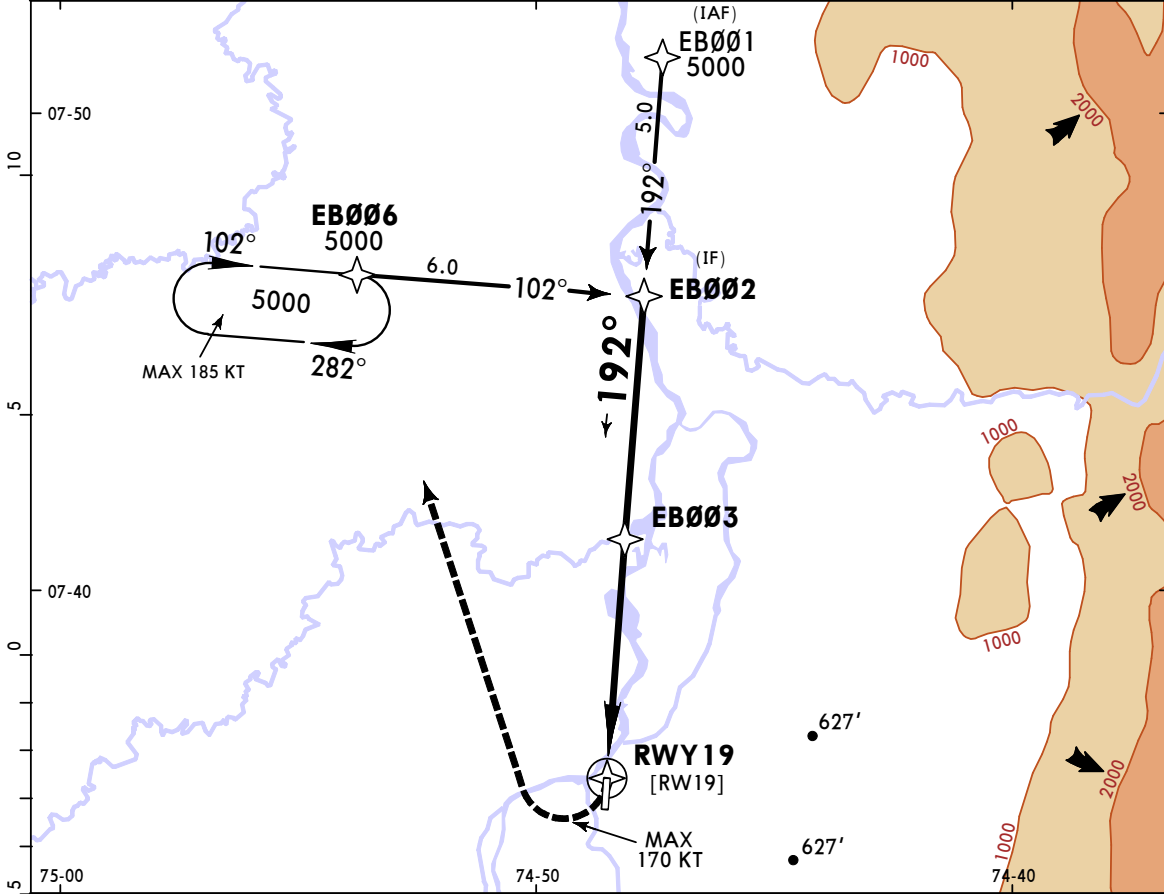
SKEB/EBG
EL TOMIN

JEPPESEN
11 JUN 21
Eff 17 Jun (12-1)

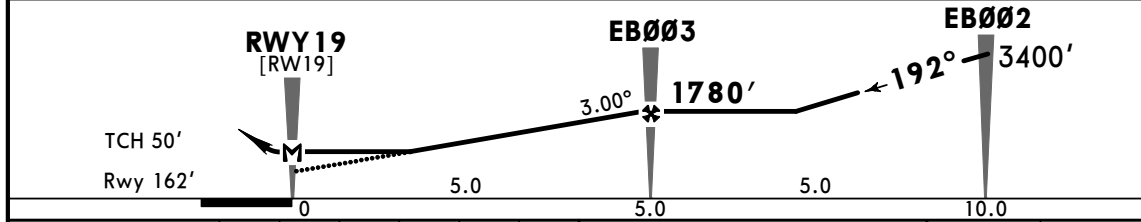
MISSED APCH CLIMB
GRADIENT MIM 4.0%
CAT A, B & C

EL BAGRE, COLOMBIA
RNP Rwy 19

MEDELLIN NORTH Approach 126.1			*EL BAGRE Tower 122.9		
RNAV	Final Apch Crs 192°	EB003 1780' (1618')	LNAV MDA(H) 1200' (1038')	Apt Elev 177' Rwy 162'	
MISSED APCH: Turn RIGHT (MAX 185 KT until end of the turn) climbing to EB006 holding pattern at 5000'. Missed Approach Climb Gradient Mim 4.0%.					
RNP Apch	Alt Set: IN (hPa on req)	Trans level: FL 190	Trans alt: 18000'		
1. For use in VMC only. 2. Refer to Jose Maria Cordova for altimeter setting supplied by Medellin Information.					MSA ARP



DIST TO THR	3.3	4.0	5.0
ALTITUDE	1200'	1480'	1780'



Gnd speed-Kts	70	90	100	120	140	160	5000' EB006
Descent Angle 3.00°	372	478	531	637	743	849	
MAP at RWY19							
FAF to MAP	5.0	4:17	3:20	3:00	2:30	2:09	1:53

STRAIGHT-IN LANDING RWY 19		CIRCLE-TO-LAND	
LNAV		MDA(H)	
MDA(H) 1200' (1038')		MDA(H) _____	
A		Max Kts	
B	5000m	100	1300' (1123') - 5000m
C		135	1500' (1323') - 5000m
D	NOT APPLICABLE	180	NOT APPLICABLE