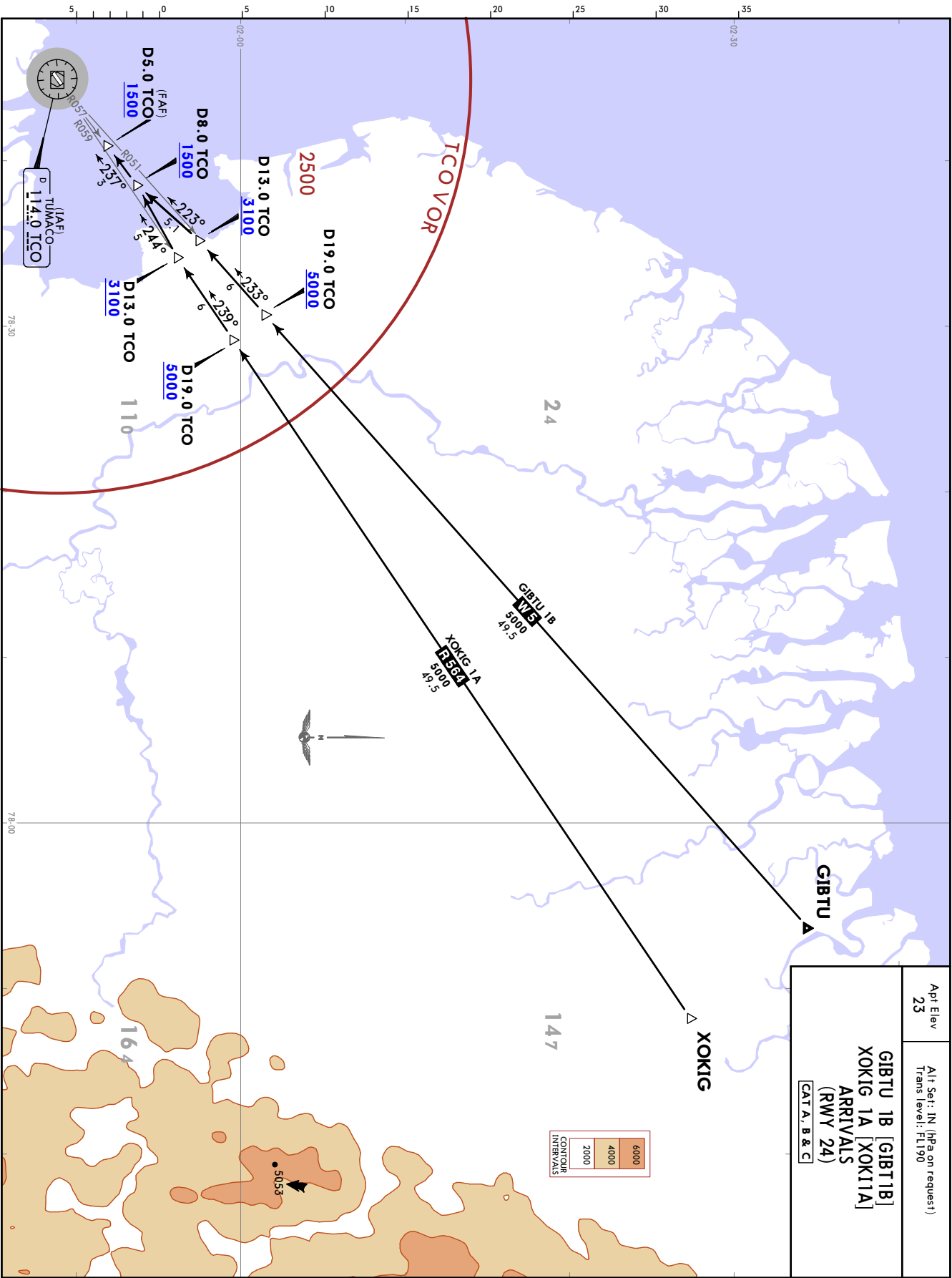


3 SEP 21 (10-2) EFF 9 Sep

Apt Elev 23  
Alt Set: IN (hPa on request)  
Trans level: FL190

GIBTU 1B [GIBT1B]  
XOKIG 1A [XOK11A]  
ARRIVALS  
(RWY 24)  
CAT A, B & C



CHANGES: GIBTU 1B added.

SKCO/TCO  
LA FLORIDA

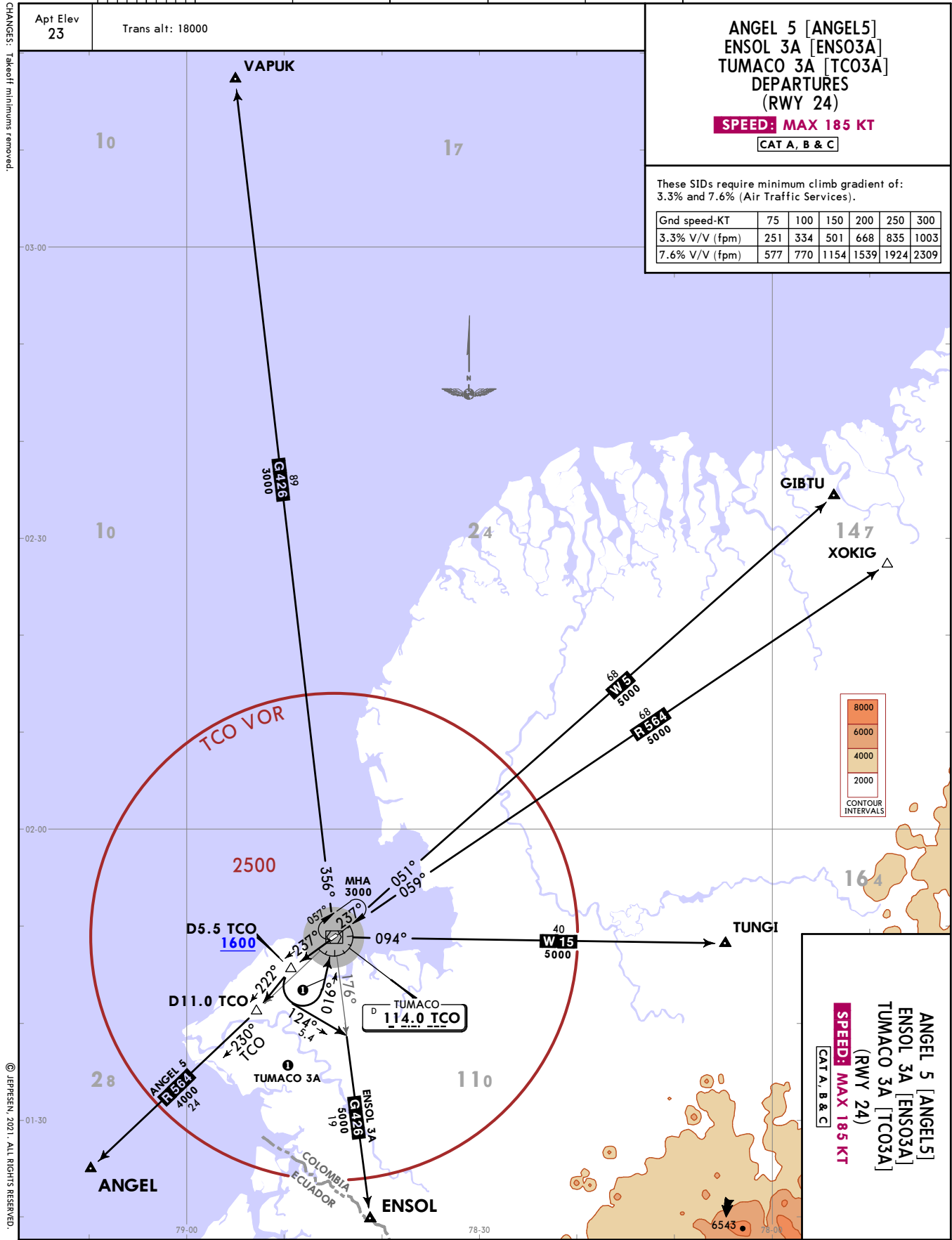
JEPPESEN TUMACO, COLOMBIA  
3 SEP 21 (10-3) EFF 9 SEP  
SID

Apt Elev 23  
Trans alt: 18000

ANGEL 5 [ANGEL5]  
ENSOL 3A [ENSO3A]  
TUMACO 3A [TCO3A]  
DEPARTURES  
(RWY 24)  
**SPEED: MAX 185 KT**  
CAT A, B & C

These SIDs require minimum climb gradient of:  
3.3% and 7.6% (Air Traffic Services).

Gnd speed-KT	75	100	150	200	250	300
3.3% V/V (fpm)	251	334	501	668	835	1003
7.6% V/V (fpm)	577	770	1154	1539	1924	2309



CHANGES: Takeoff minimums removed.

© JEPPESEN, 2021. ALL RIGHTS RESERVED.

SKCO/TCO  
LA FLORIDA

JEPPesen  
3 SEP 21 10-3A Eff 9 Sep

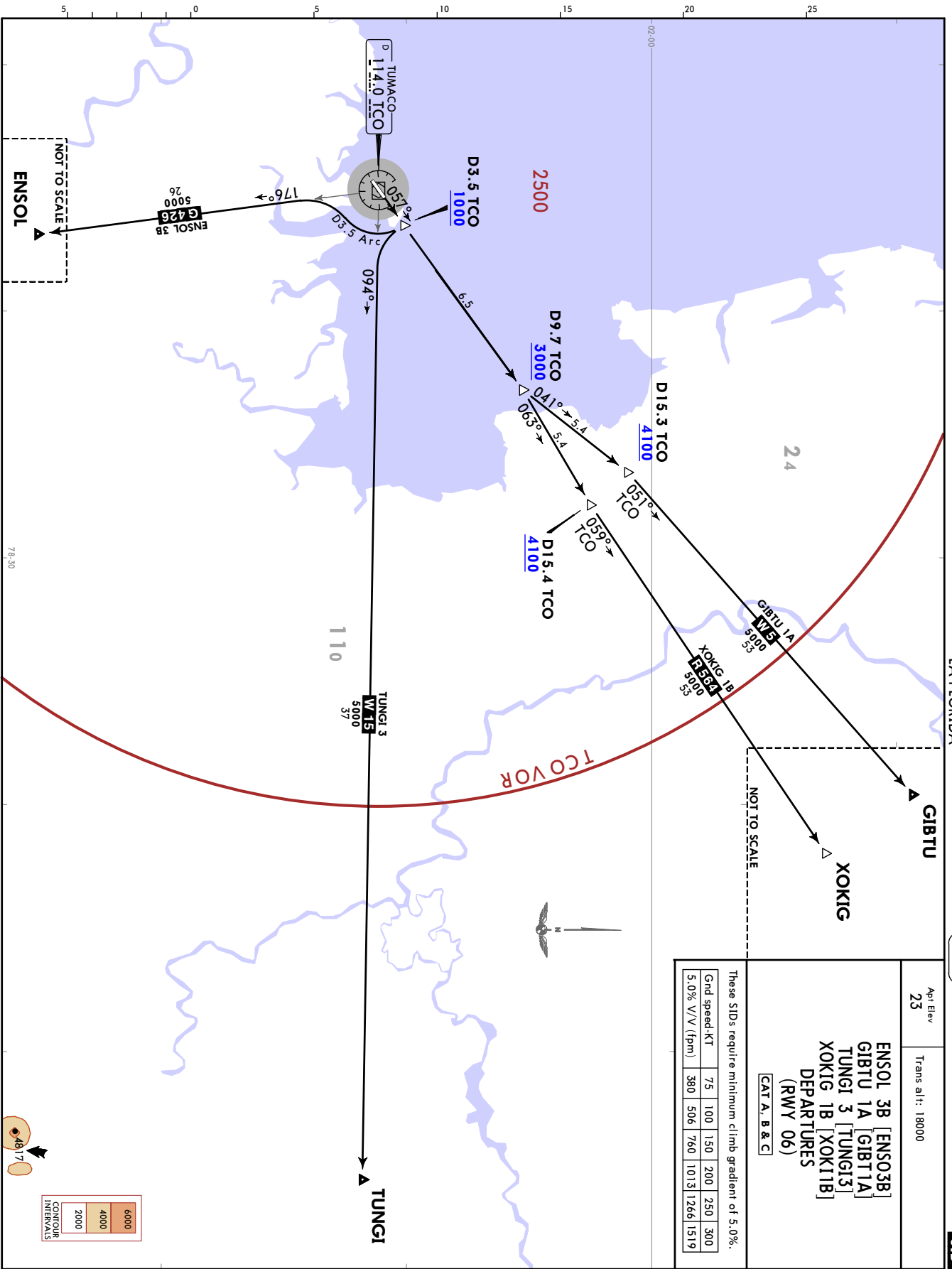
TUMACO, COLOMBIA  
SID

App Elev  
23  
Trans alt: 18000

ENSOL 3B [ENS03B]  
GIBTU 1A [GIBT1A]  
TUNGI 3 [TUNG13]  
XOKIG 1B [XOK11B]  
DEPARTURES  
(RWY 06)  
CAT A, B & C

These SIDs require minimum climb gradient of 5.0%.

Grnd speed-KT	75	100	150	200	250	300
5.0% V/V (fpm)	380	506	760	1013	1266	1519



CONTOUR INTERVALS

6000
4000
2000

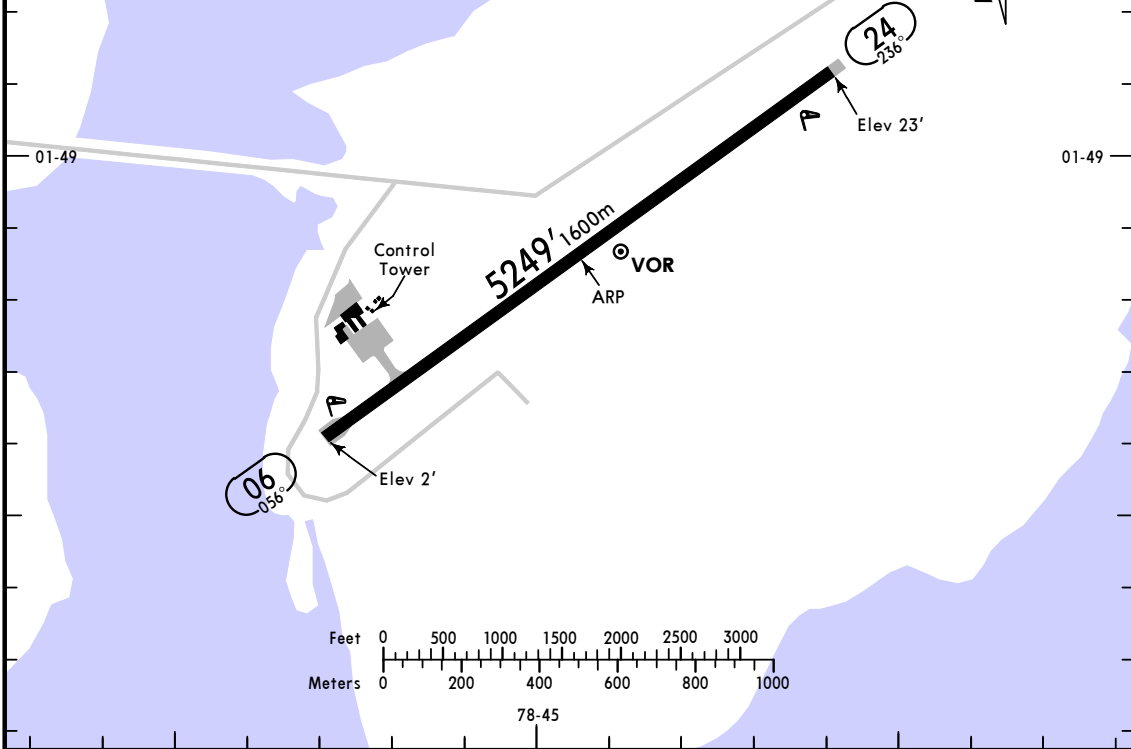
CHANGES: GIBTU 1A added.

© JEPPESEN, 2021. ALL RIGHTS RESERVED.

\*LA FLORIDA Tower 118.1

78-45

CAUTION: Concentration of birds on take-off and landing track of Rwy 06/24.  
 CAUTION: Personnel at threshold Rwy 06/24.  
 CAUTION: Antenna 262' (80m) high, left of approach track Rwy 24.  
 Radar tower 213' (65m) high located 5965' (1818m) of threshold 24  
 in coordinates 01 49 22.7N 078 43 39.7W.  
 Tower visibility reduced towards threshold Rwy 24 by presence of high trees.



ADDITIONAL RUNWAY INFORMATION

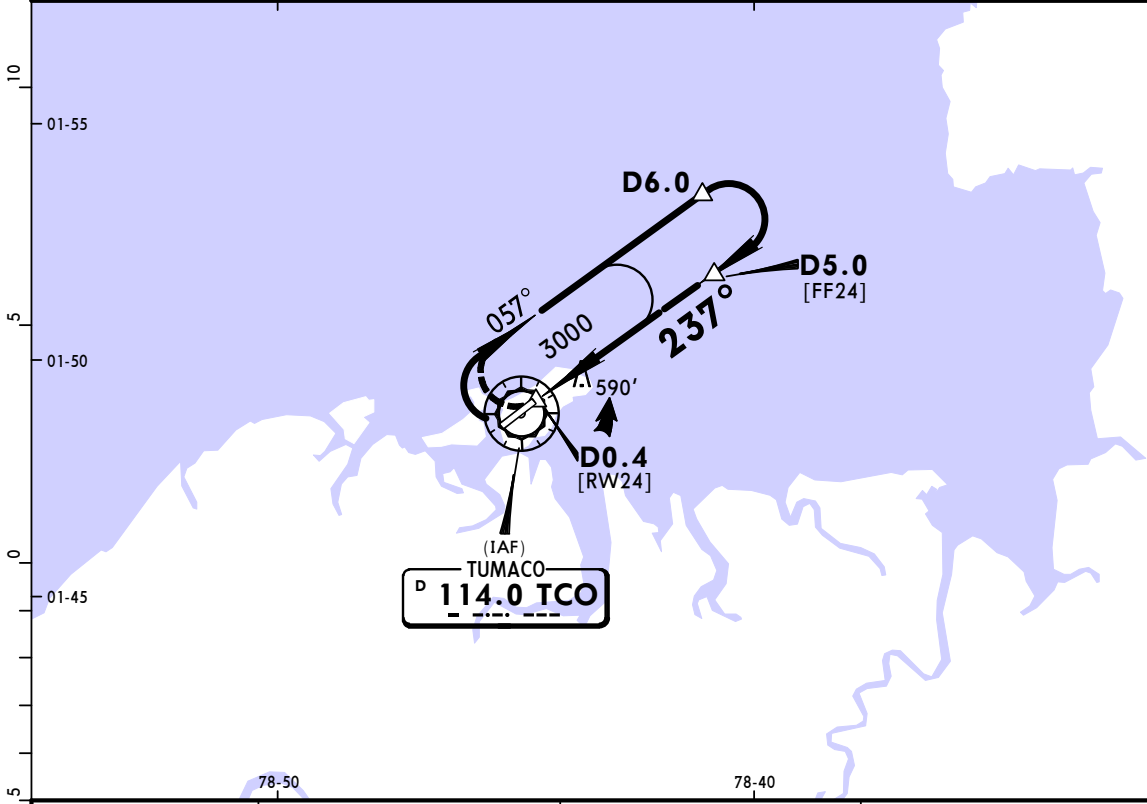
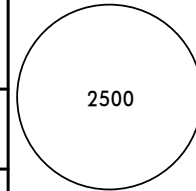
RWY		USABLE LENGTHS			WIDTH
		Threshold	LANDING BEYOND Glide Slope	TAKE-OFF	
06	RL				98' 30m
24	RL PAPI (angle 3.0°)				

TAKE-OFF	
All Rwys	
1 or More Eng	1600m
3 or More Eng	800m

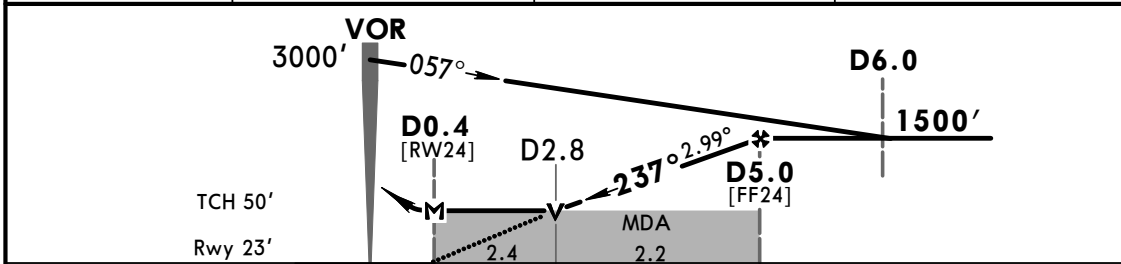
\*LA FLORIDA Tower 118.1

BRIEFING STRIP™

VOR TCO <b>114.0</b>	Final Apch Crs <b>237°</b>	D5.0 <b>1500'</b> (1477')	MDA(H) <b>840'</b> (817')	Apt Elev 23' Rwy 23'
<b>MISSED APCH: Turn RIGHT to TCO VOR holding pattern climbing to 3000'.</b>				
Alt Set: IN (hPa on req)		Trans level: FL 190		Trans alt: 18000'
TCO DME required.				MSA TCO VOR



TCO DME	3.0	4.0	5.0
ALTITUDE	904'	1220'	1500'



Gnd speed-Kts	70	90	100	120	140	160	PAPI	RT	TCO <b>114.0</b>
Descent Angle 2.99°	370	476	529	635	741	846			
MAP at D0.4									
FAF to MAP	4.6	3:57	3:04	2:46	2:18	1:58	1:43		

STRAIGHT-IN LANDING RWY 24		CIRCLE-TO-LAND	
MDA(H) <b>840'</b> (817')		MDA(H) _____	
A		100	<b>890'</b> (867') - 4200m
B	4000m	135	<b>990'</b> (967') - 4700m
C	4200m	180	<b>990'</b> (967') - 4700m
D	NOT APPLICABLE	D	NOT APPLICABLE

PANS OPS