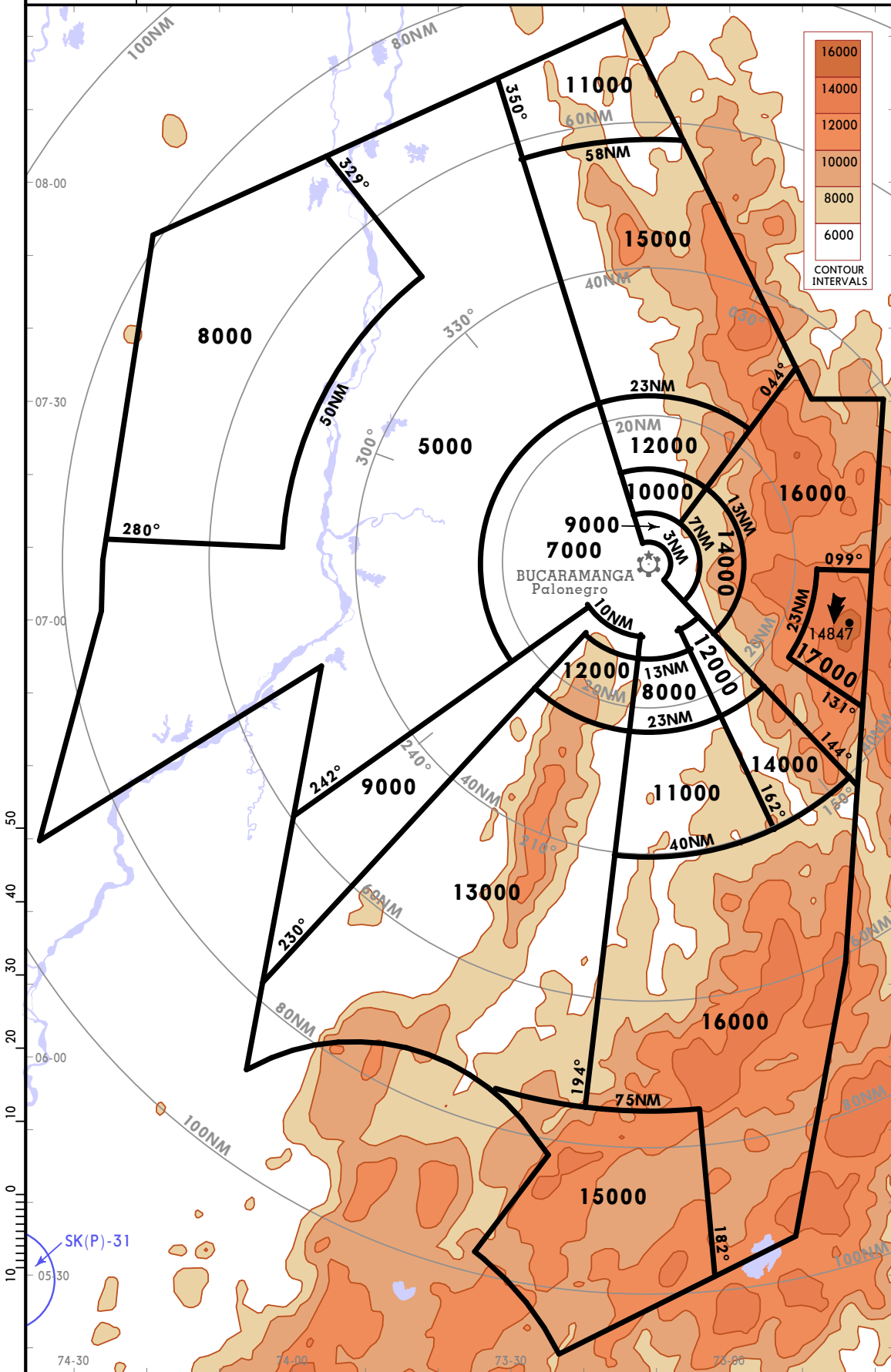
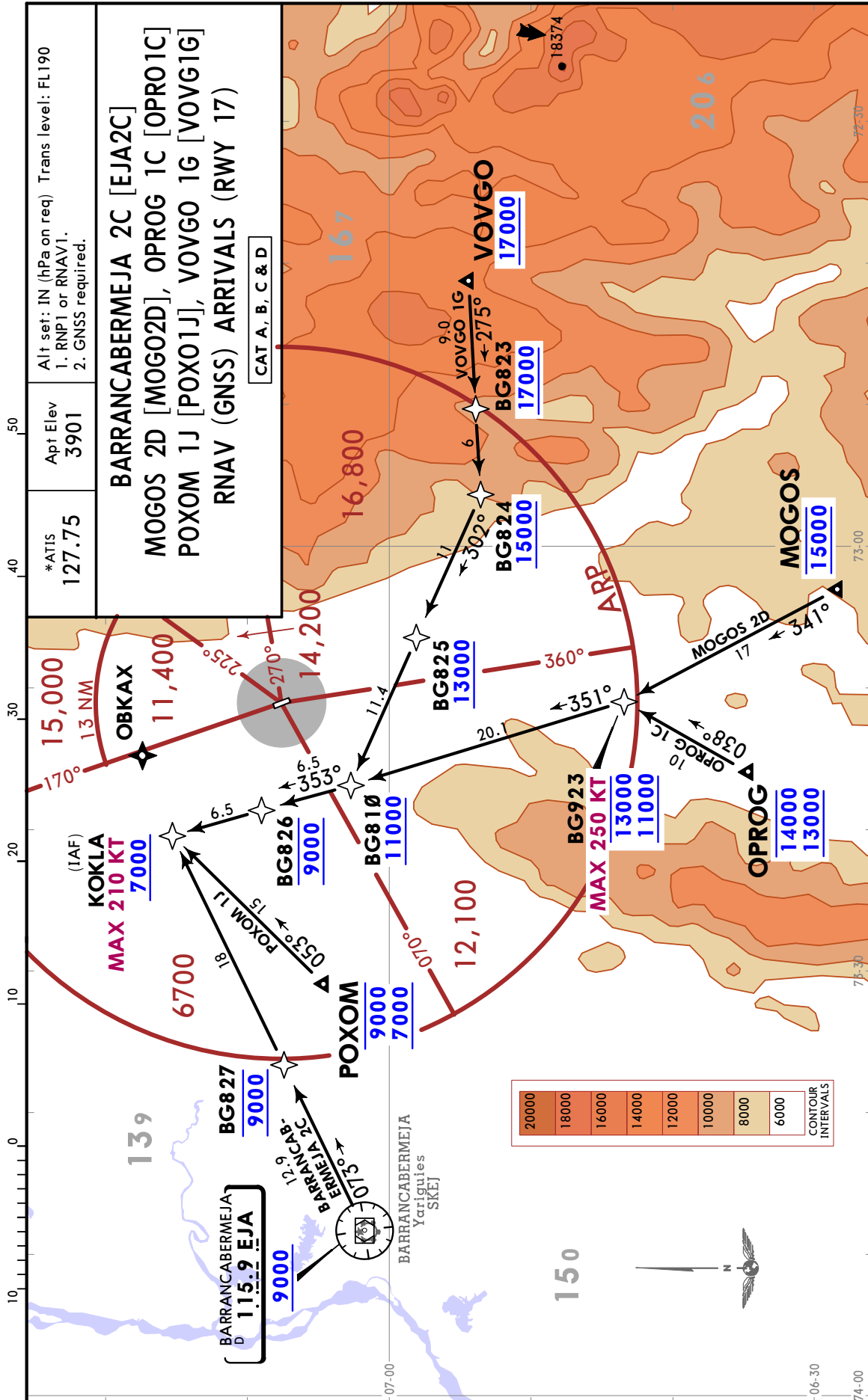


Apt Elev
3901

Alt Set: IN (hPa on req) Trans level: FL190 Trans alt: 18000
Chart not usable for conventional navigation, without support of GNSS systems.





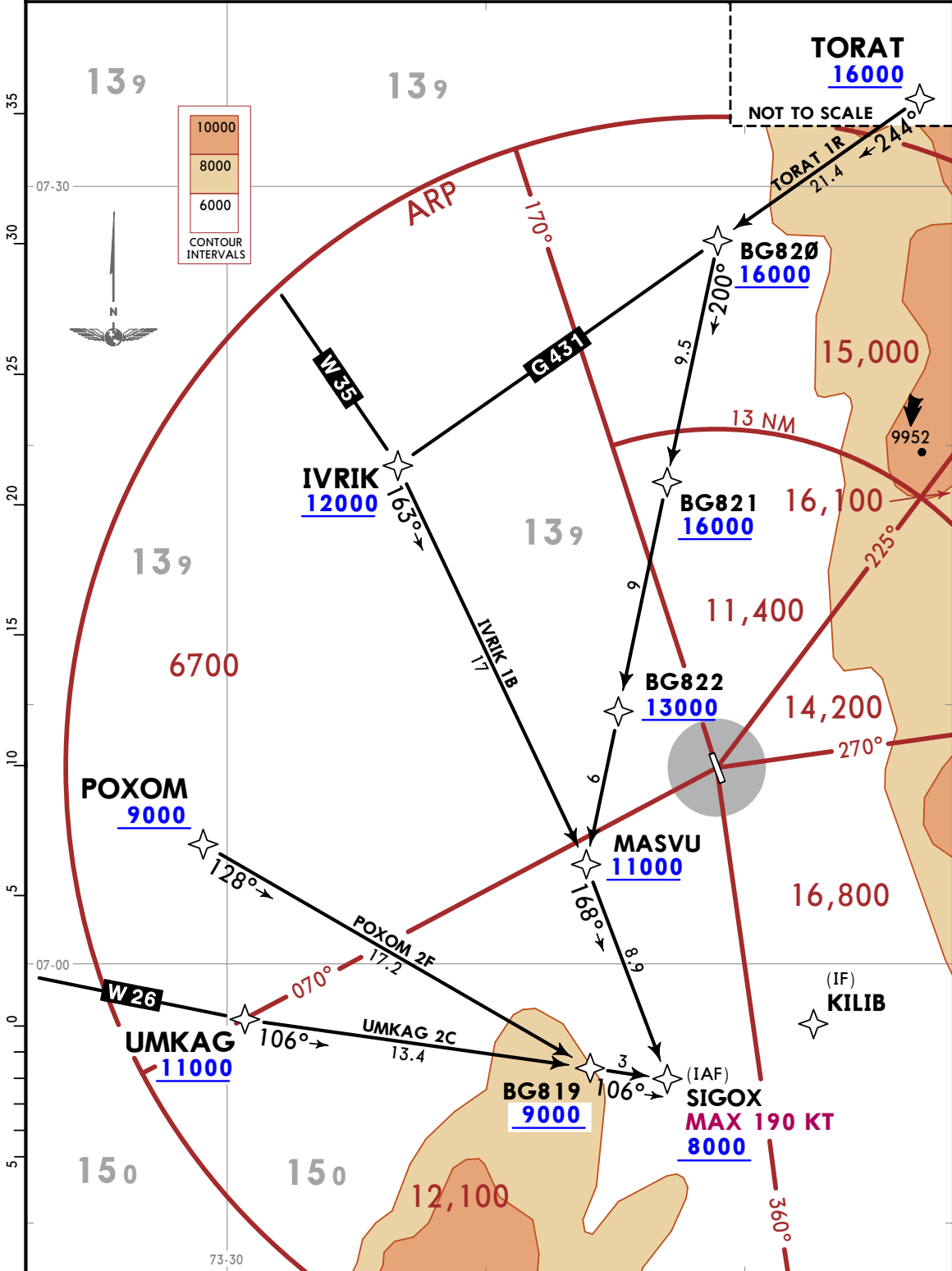
CHANGES: ATIS, airport elevation.

© JEPPESEN, 2020. ALL RIGHTS RESERVED.

*ATIS 127.75	Apt Elev 3901	Alt set: hPa (IN on req) Trans level: FL190
		RNP1 or RNAV1 GNSS required

**IVRIK 1B [IVRI1B], POXOM 2F [POX02F]
TORAT 1R [TORA1R], UMKAG 2C [UMKA2C]
RNAV (GNSS) ARRIVALS
(RWY 35)**

CAT A, B, C & D

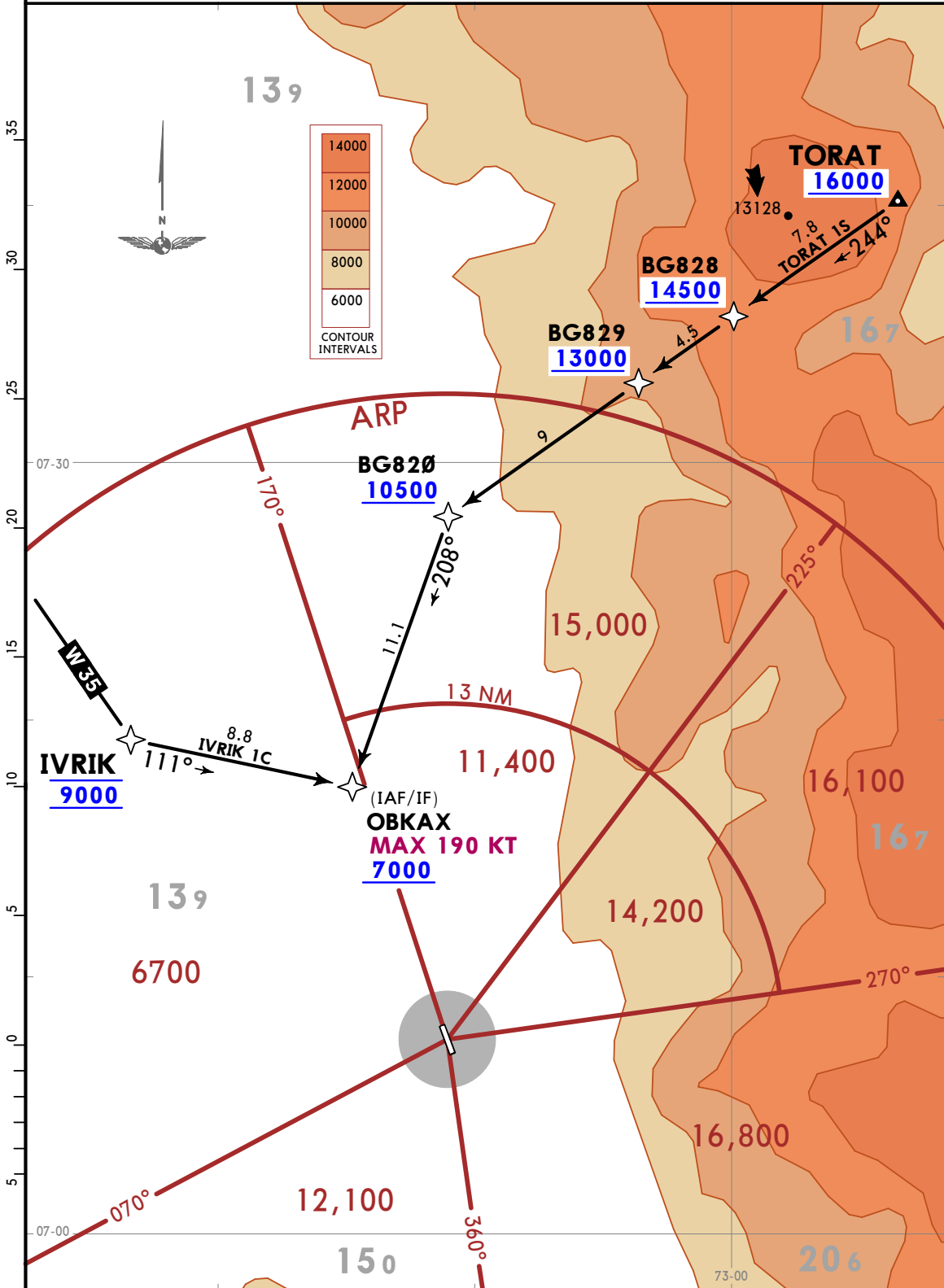


CHANGES: STAR UMKAG 1C upnumbered UMKAG 2C, altitude restriction at BG819. © JEPPESEN, 2020, 2021. ALL RIGHTS RESERVED.

*ATIS 127.75	Apt Elev 3901	Alt set: IN (hPa on req) Trans level: FL190 1. RNP1 or RNAV1. 2. GNSS required.
------------------------	-------------------------	---

**IVRIK 1C [IVRI1C], TORAT 1S [TORA1S]
RNAV (GNSS) ARRIVALS
(RWY 17)**

CAT A, B, C & D



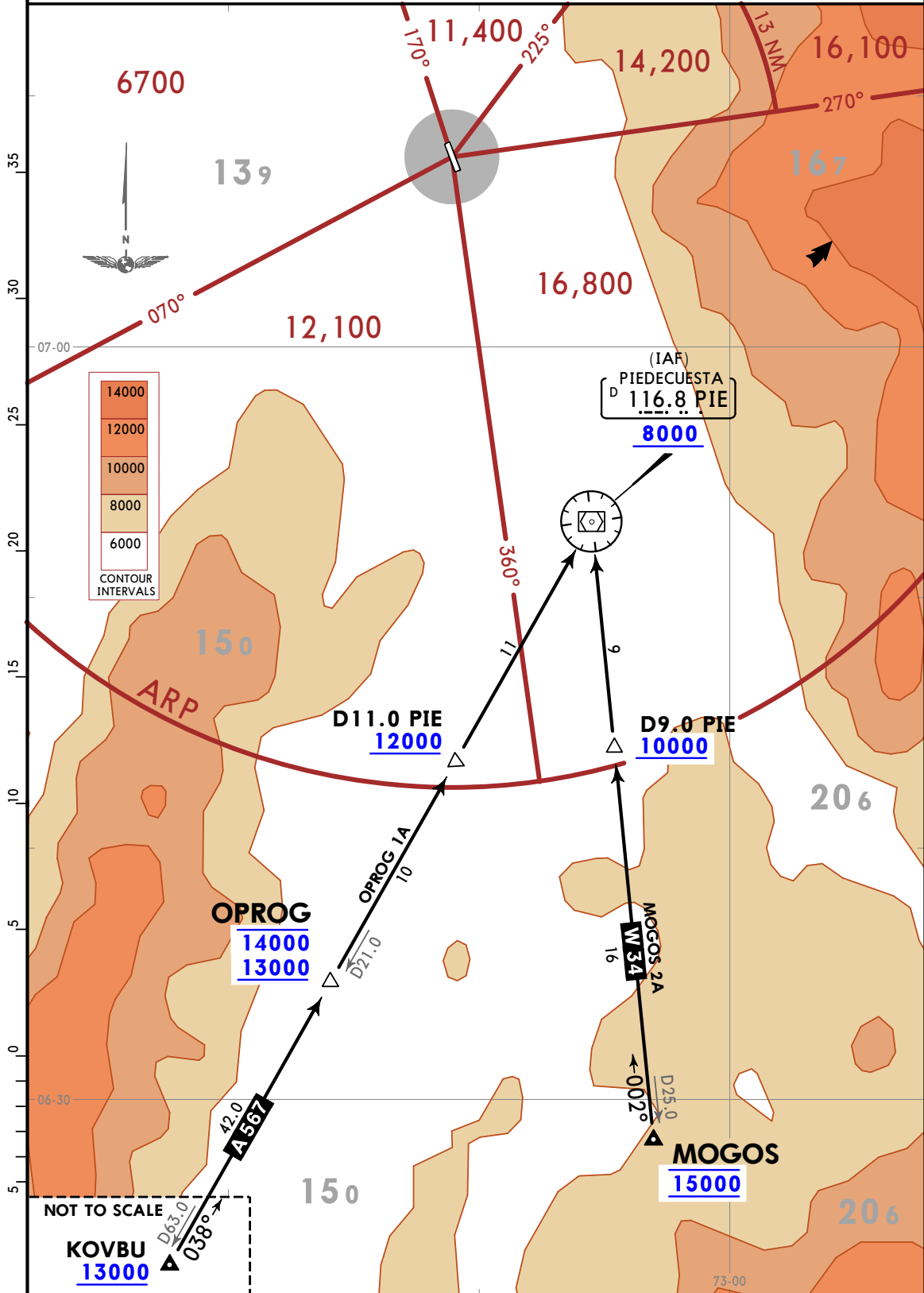
CHANGES: None.

© JEPPESEN, 2020. ALL RIGHTS RESERVED.

*ATIS 127.75	Apt Elev 3901	Alt set: IN (hPa on req) Trans level: FL190
-----------------	------------------	---

MOGOS 2A [MOGO2A], OPROG 1A [OPRO1A] ARRIVALS
(ALL RWYS)

CAT A, B, C & D

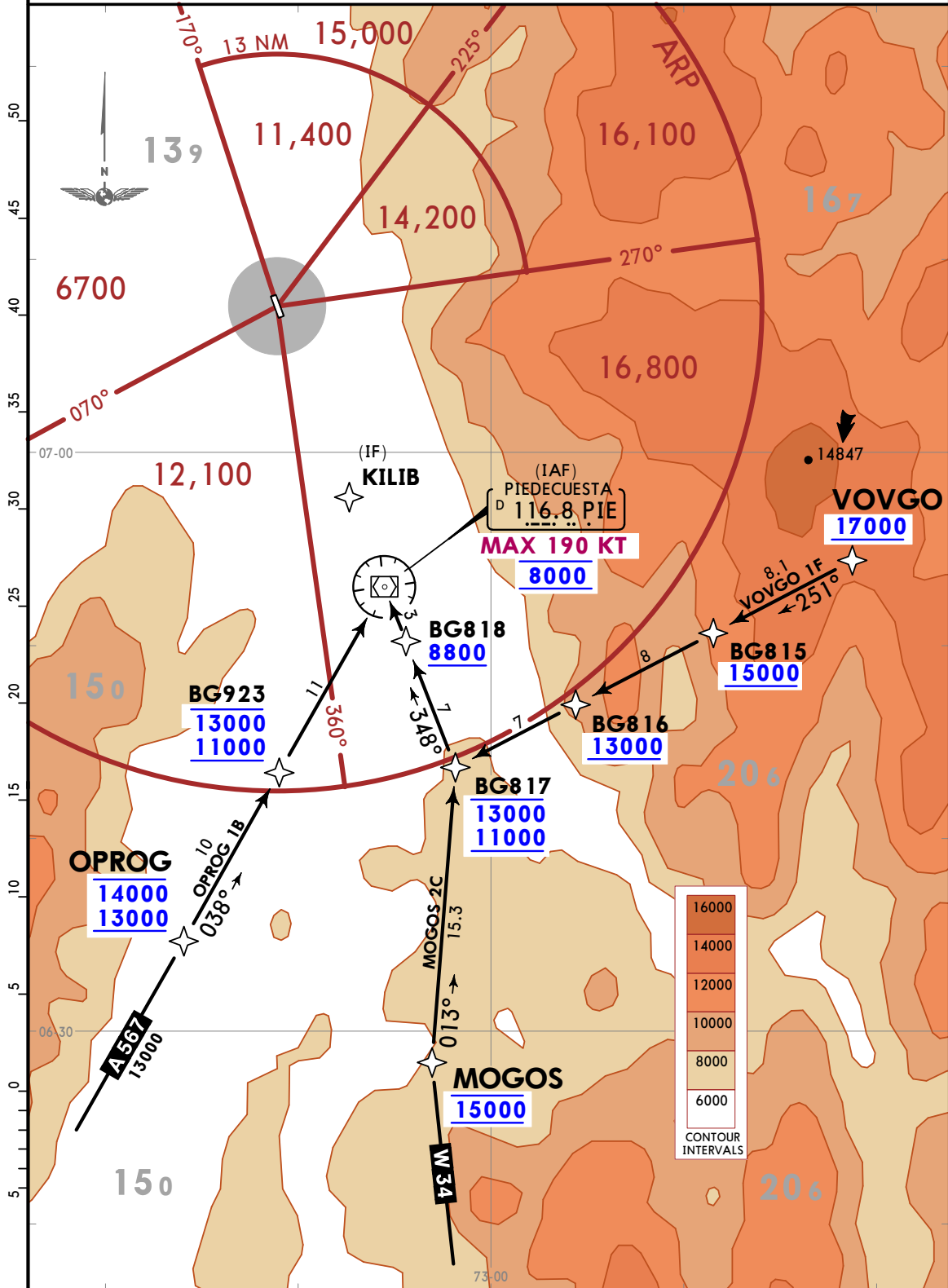


CHANGES: ATIS, airport elevation.

*ATIS 127.75	Apt Elev 3901	Alt set: IN (hPa on req) Trans level: FL190 1. RNP1 or RNAV1. 2. GNSS required.
-----------------	------------------	---

MOGOS 2C [MOG02C], OPROG 1B [OPRO1B]
VOVGO 1F [VOVG1F]
RNAV (GNSS) ARRIVALS (RWY 35)

CAT A, B, C & D



CHANGES: ATIS, airport elevation.

Apt Elev
3902

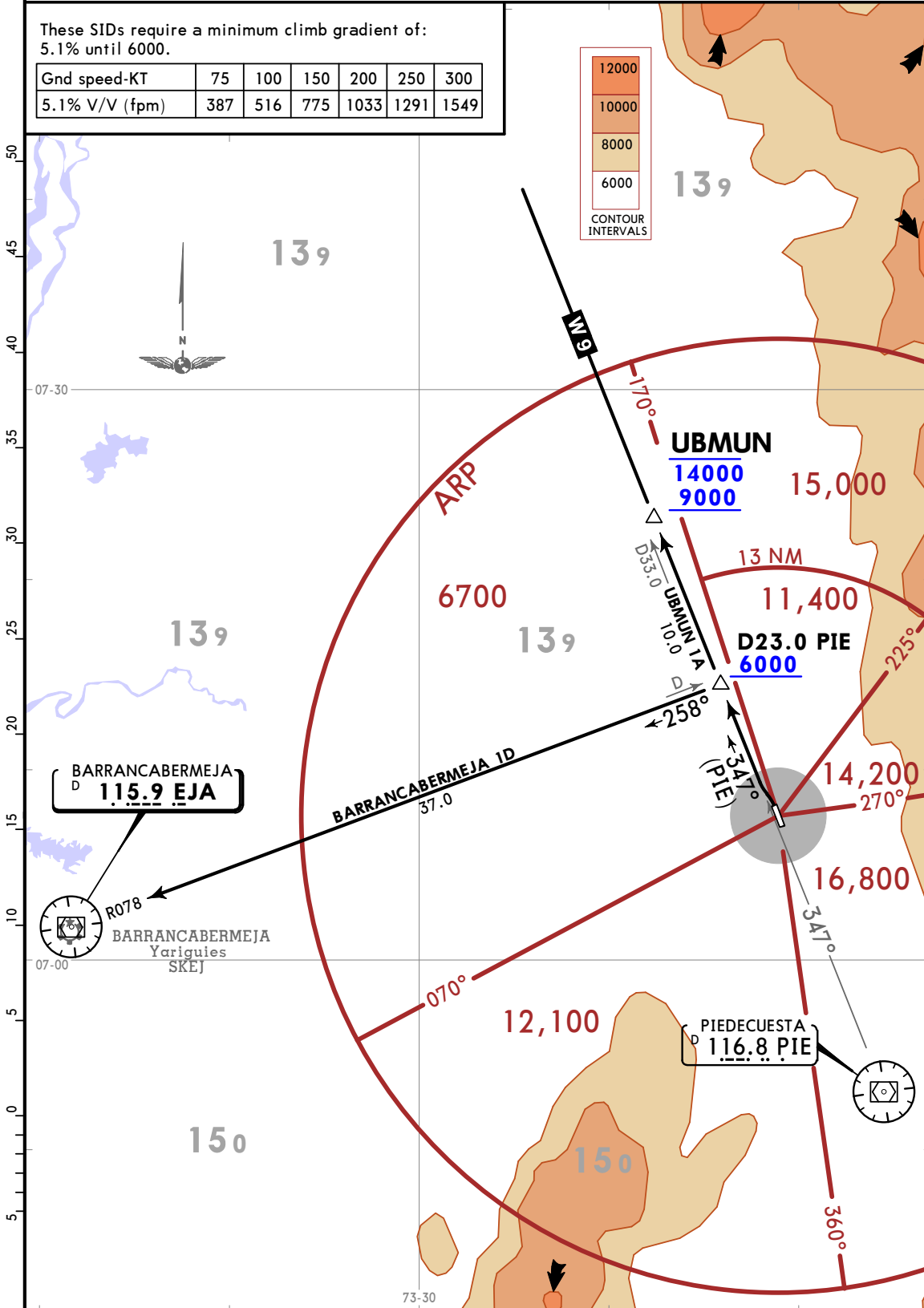
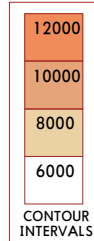
Trans alt: 18000
PIE VOR/DME, EJA VOR/DME required.

**BARRANCABERMEJA 1D [EJA1D], UBMUN 1A [UBMU1A]
DEPARTURES (RWY 35)**

CAT A, B, C & D

These SIDs require a minimum climb gradient of:
5.1% until 6000.

Gnd speed-KT	75	100	150	200	250	300
5.1% V/V (fpm)	387	516	775	1033	1291	1549



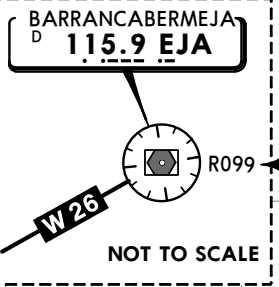
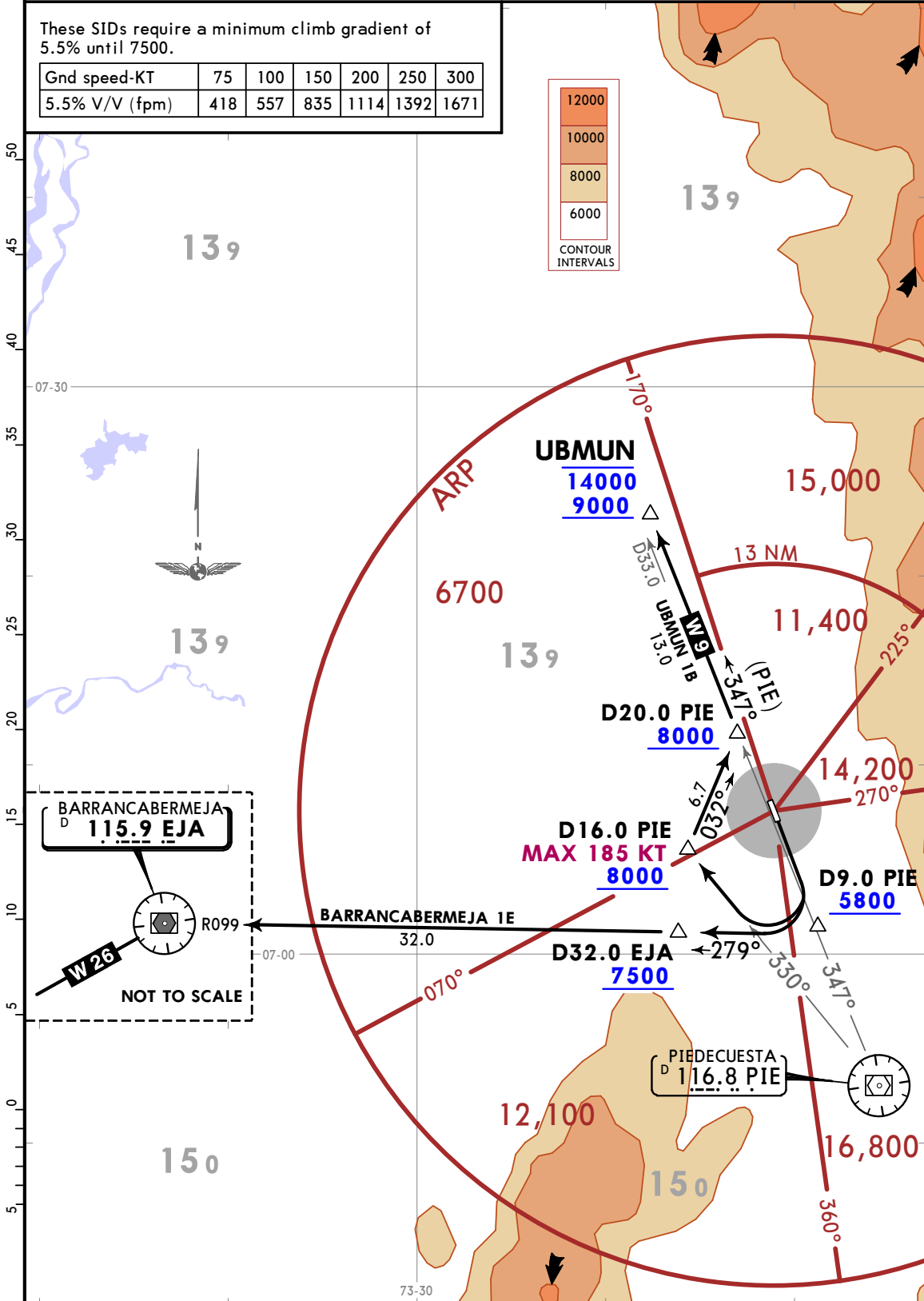
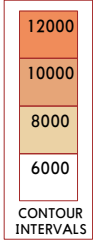
Apt Elev 3902 Trans alt: 18000
PIE VOR/DME, EJA VOR/DME required.

**BARRANCABERMEJA 1E [EJA1E], UBMUN 1B [UBMU1B]
DEPARTURES (RWY 17)**

CAT A, B, C & D

These SIDs require a minimum climb gradient of 5.5% until 7500.

Gnd speed-KT	75	100	150	200	250	300
5.5% V/V (fpm)	418	557	835	1114	1392	1671



CHANGES: New procedures at this airport.

© JEPPESEN, 2020. ALL RIGHTS RESERVED.

Apt Elev
3902

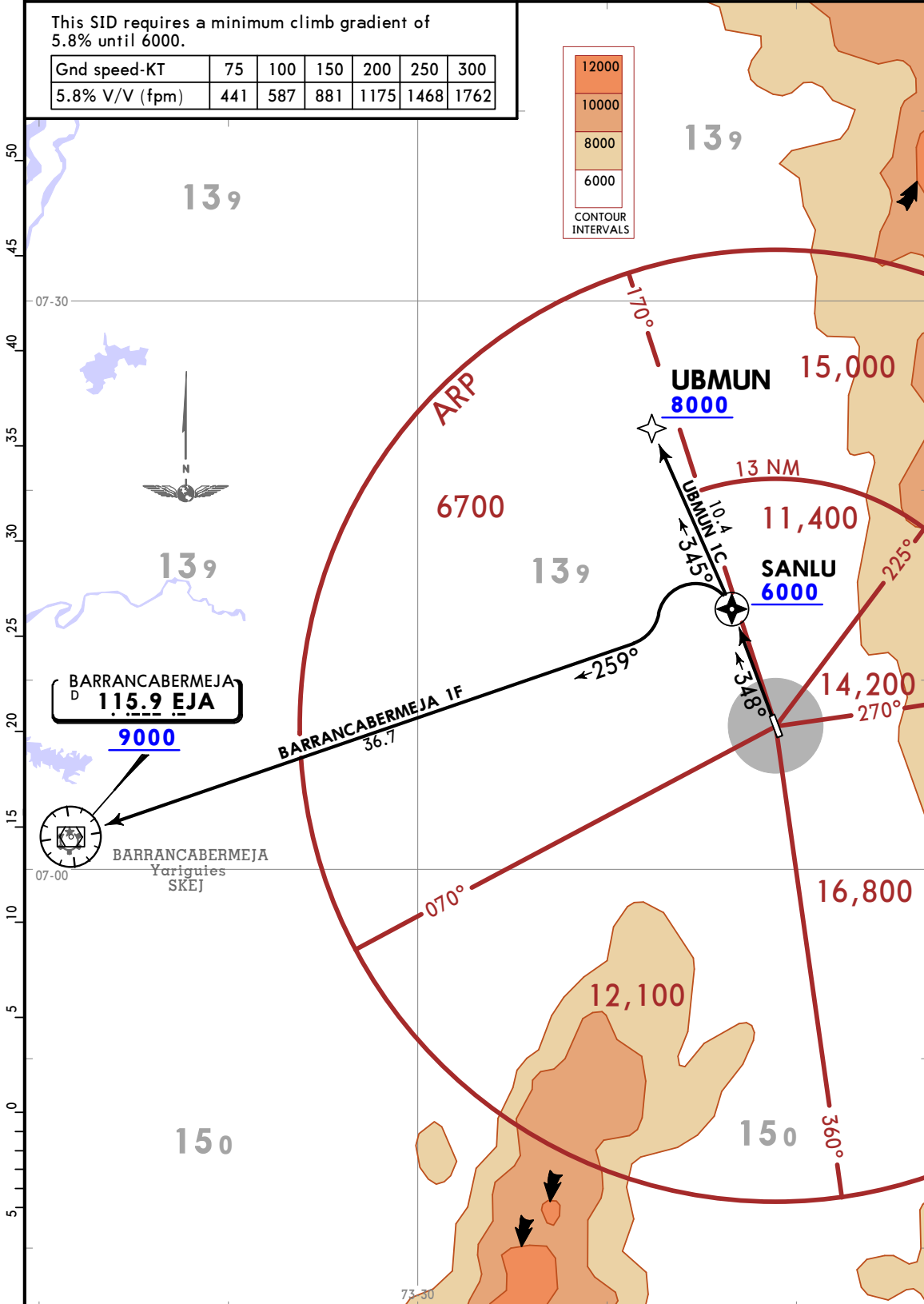
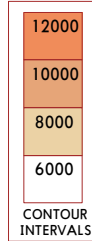
Trans alt: 18000
1. RNP1 or RNAV1.
2. GNSS required.

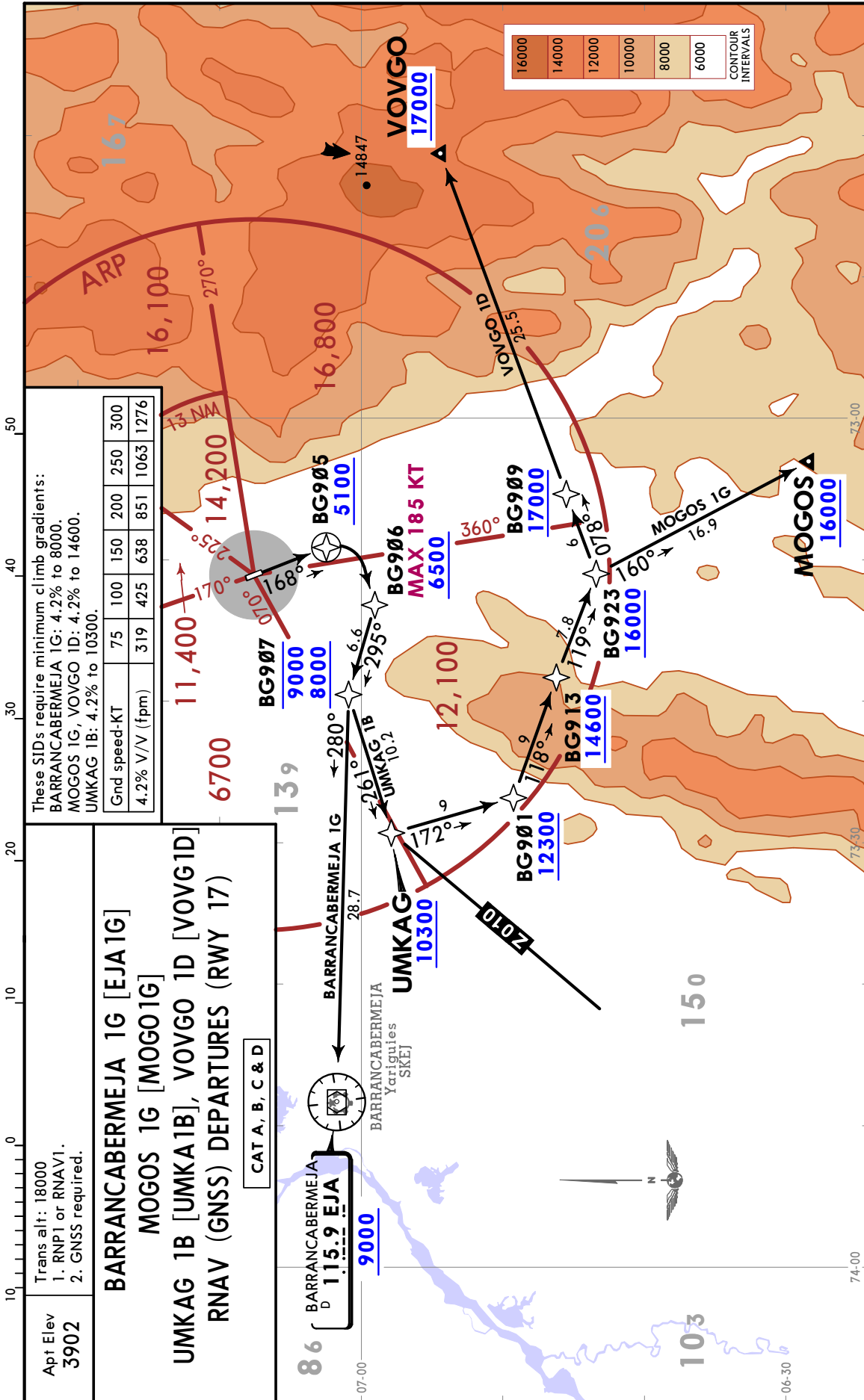
**BARRANCABERMEJA 1F [EJA1F], UBMUN 1C [UBMU1C]
RNAV (GNSS) DEPARTURES (RWY 35)**

CAT A, B, C & D

This SID requires a minimum climb gradient of 5.8% until 6000.

Gnd speed-KT	75	100	150	200	250	300
5.8% V/V (fpm)	441	587	881	1175	1468	1762





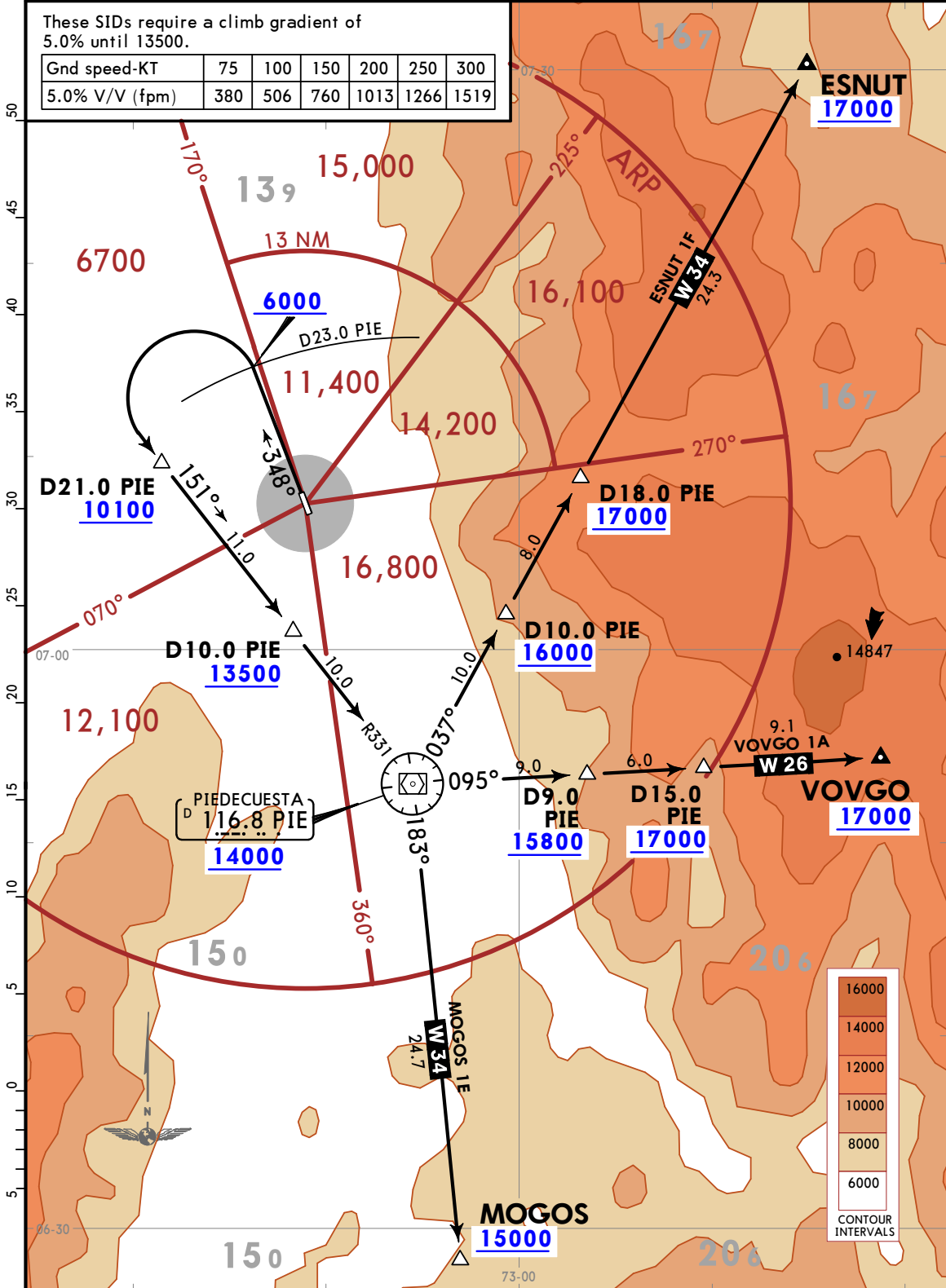
Apt Elev 3902	Trans alt: 18000 PIE VOR/DME required.
-------------------------	---

**ESNUT 1F [ESNU1F], MOGOS 1E [MOGO1E]
VOVGO 1A [VOVG1A]
DEPARTURES (RWY 35)**

CAT A, B, C & D

These SIDs require a climb gradient of 5.0% until 13500.

Gnd speed-KT	75	100	150	200	250	300
5.0% V/V (fpm)	380	506	760	1013	1266	1519



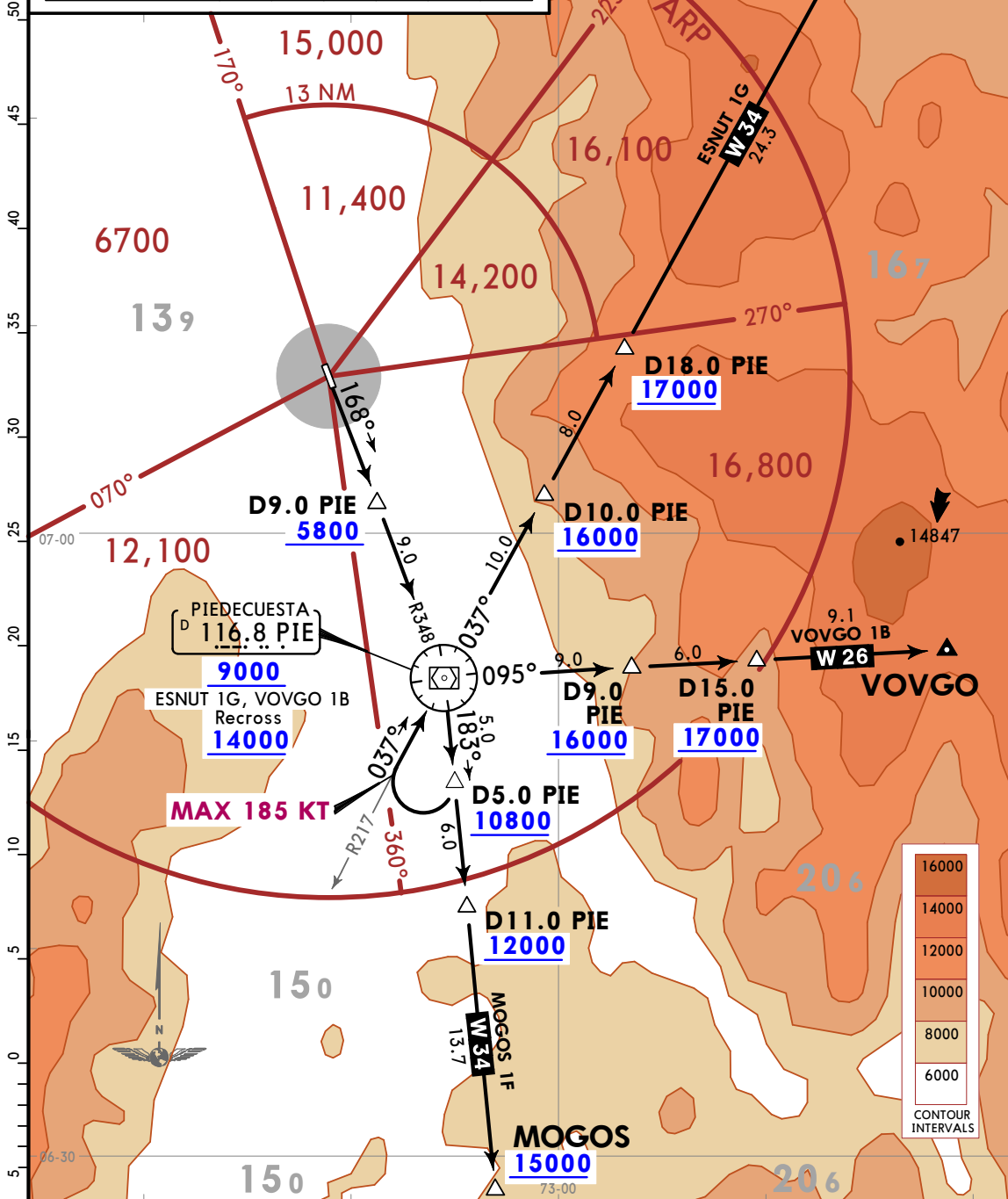
Apt Elev 3902
Trans alt: 18000
PIE VOR/DME required.

ESNUT 1G [ESNU1G], MOGOS 1F [MOGO1F]
VOVGO 1B [VOVG1B]
DEPARTURES (RWY 17)

CAT A, B, C & D

These SIDs require a climb gradient of 5.7% until 14000.

Gnd speed-KT	75	100	150	200	250	300
5.7% V/V (fpm)	433	577	866	1154	1443	1732



SID	INITIAL CLIMB
ESNUT 1G VOVGO 1B	Cross PIE VOR at or above 9000, leave PIE VOR on PIE R183 to D5.0 PIE at or above 10800, then turn RIGHT to climb and intercept PIE R217, direct to PIE VOR at or above 14000.

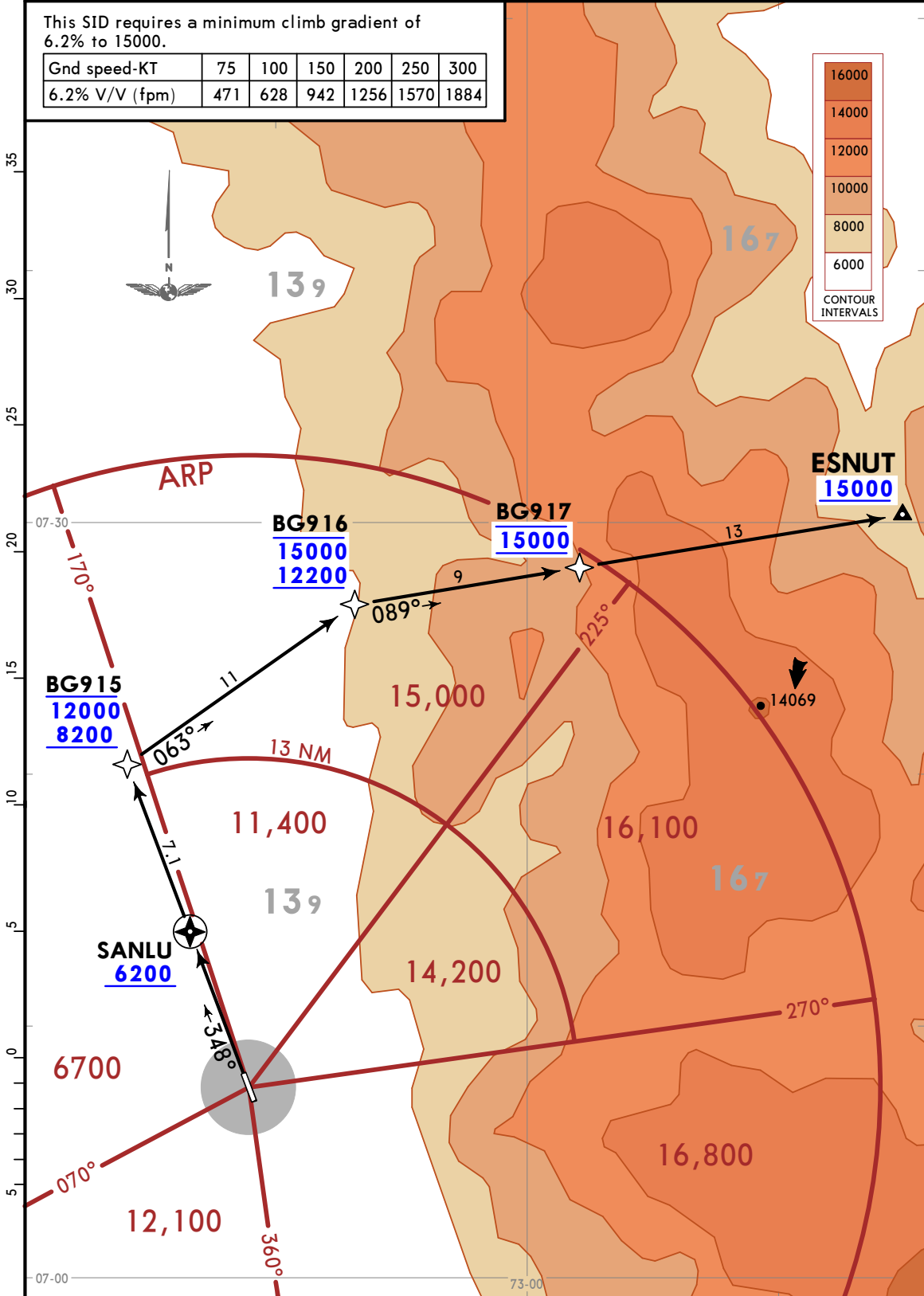
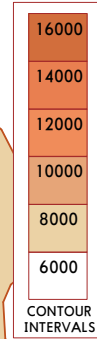
Apt Elev 3901	Trans alt: 18000 1. RNP1 or RNAV1. 2. GNSS required.
-------------------------	--

**ESNUT 2H RNAV (GNSS) DEPARTURE [ESNU2H]
(RWY 35)**

CAT A, B, C & D

This SID requires a minimum climb gradient of 6.2% to 15000.

Gnd speed-KT	75	100	150	200	250	300
6.2% V/V (fpm)	471	628	942	1256	1570	1884



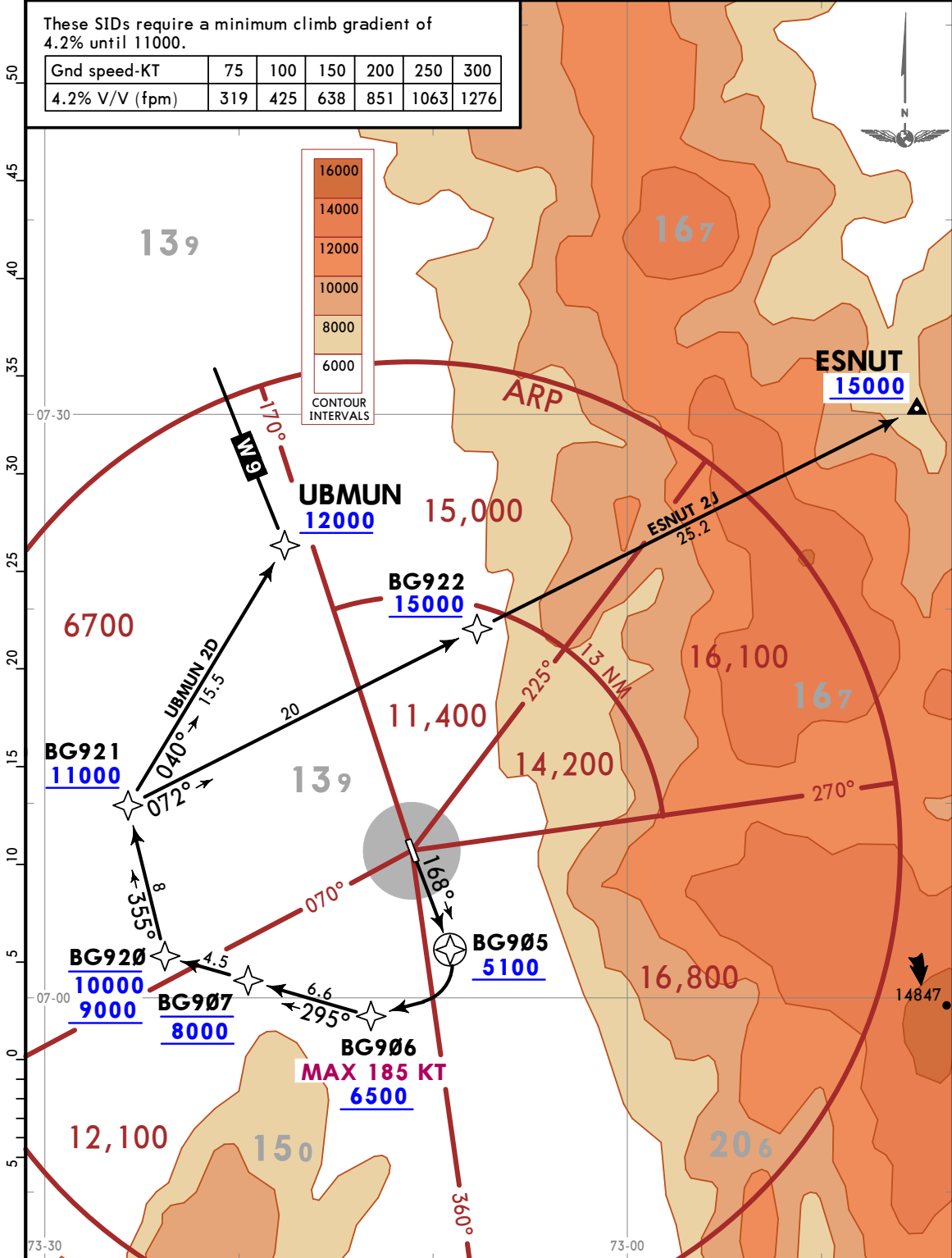
Apt Elev 3901	Trans alt: 18000 1. RNP1 or RNAV1. 2. GNSS required.
-------------------------	--

**ESNUT 2J [ESNU2J]
UBMUN 2D [UBMU2D]
RNAV (GNSS) DEPARTURES
(RWY 17)**

CAT A, B, C & D

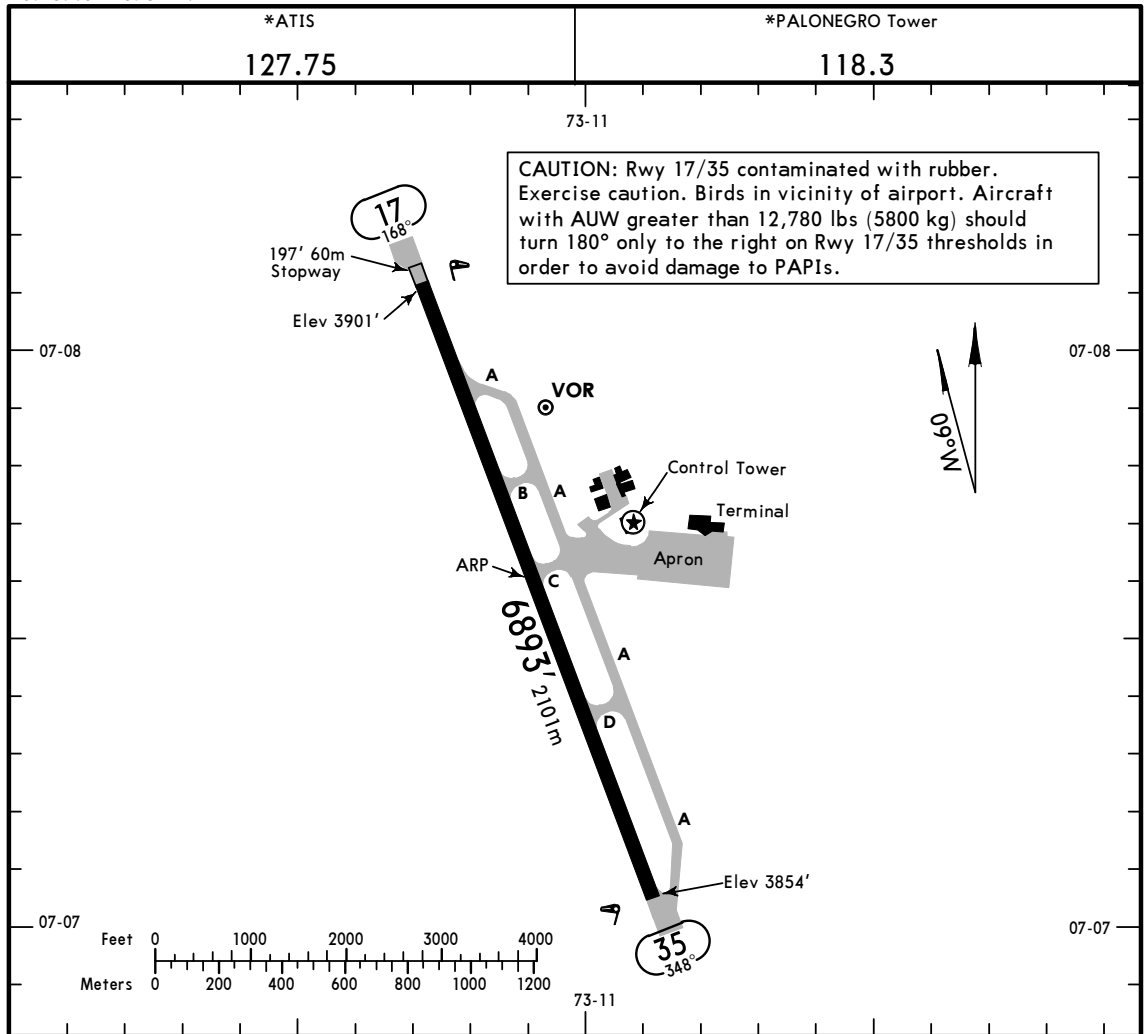
These SIDs require a minimum climb gradient of 4.2% until 11000.

Gnd speed-KT	75	100	150	200	250	300
4.2% V/V (fpm)	319	425	638	851	1063	1276



CHANGES: Procedures revised, UBMUN SID renumbered, waypoint BG907.

© JEPPESEN, 2019, 2020. ALL RIGHTS RESERVED.



ADDITIONAL RUNWAY INFORMATION

RWY	HIRL	CL	REIL	TDZ	PAPI-L (angle 3.0°)	USABLE LENGTHS			WIDTH
						Threshold	Glide Slope	TAKE-OFF	
17								7385' 2251m	148'
35							6518' 1987m	7260' 2213m	45m

TAKE-OFF & DEPARTURE PROCEDURE

All Rwys	
1 Take-off Alternate Airport Filed	STD
RL & CL or RCLM	
1 Eng	1000' - 2800m
2 Eng	1 hour alternate (1 Eng inop) 500m
3 & 4 Eng	2 hour alternate (1 Eng inop) 500m
	1600m
	800m

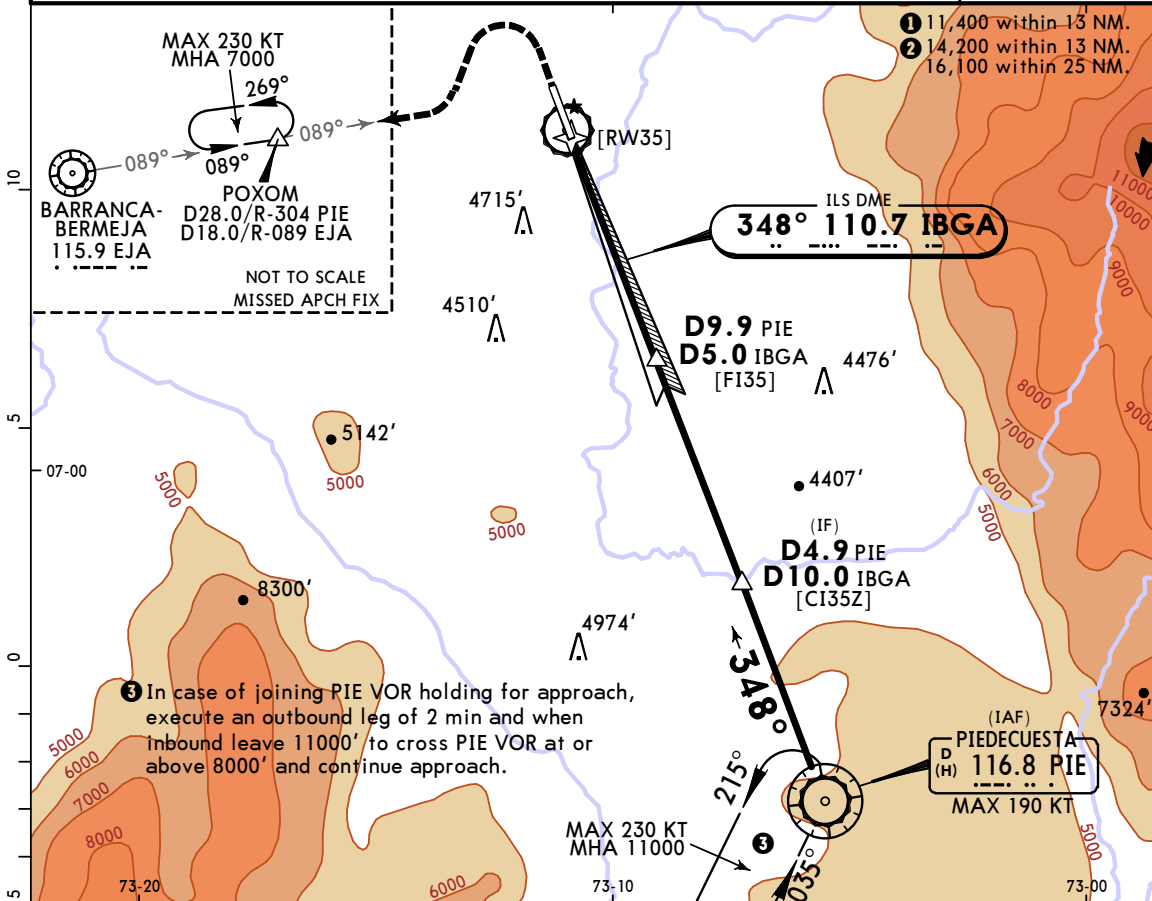
1 With appropriate approval.

DEPARTURE PROCEDURE: IFR departures must comply with published SIDs.

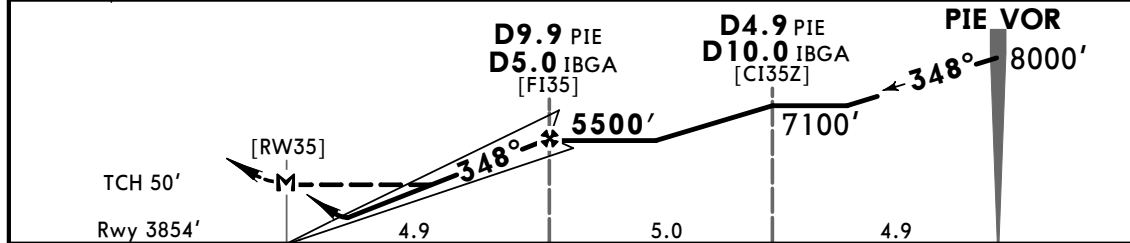
SKBG/BGA
PALONEGRO

JEPPESEN BUCARAMANGA, COLOMBIA
7 AUG 20 **(11-1)** Eff 13 Aug ILS Z or LOC Z Rwy 35

*ATIS 127.75		*BUCARAMANGA Approach 119.0		*PALONEGRO Tower 118.3	
LOC IBGA 110.7	Final Apch Crs 348°	D9.9 PIE D5.0 IBGA 5500' (1646')	ILS DA(H) 4220' (366')	Apt Elev 3901'	Rwy 3854'
MISSED APCH: Climb on runway heading until crossing 6000' then turn LEFT climbing to intercept EJA VOR R-089, proceed to POXOM holding pattern and 7000'.					
Alt Set: IN (hPa on req)		Trans level: FL 190		Trans alt: 18000'	
1. VOR DME PIE required. 2. VOR DME EJA required. 3. Holding at POXOM and EJA VOR simultaneously is prohibited.					
MSA ARP					



LOC	IBGA DME	1.0	2.0	3.0	4.0	5.0
(GS out)	ALTITUDE	4222'	4541'	4859'	5178'	5500'



Gnd speed-Kts	70	90	100	120	140	160	PAPI-L	↑ on RWY hdg	Until Crossing 6000'	
GS	3.00°	372	478	531	637	743				849
MAP at [RW35] or FAF to MAP	4.9	4:12	3:16	2:56	2:27	2:06				1:50

STRAIGHT-IN LANDING RWY 35		CIRCLE-TO-LAND	
ILS DA(H) 4220' (366')	LOC (GS out) MDA(H) 4380' (526')		
A	2600m	NOT APPLICABLE	
B			
C	1800m		
D	2800m		

PANS OPS

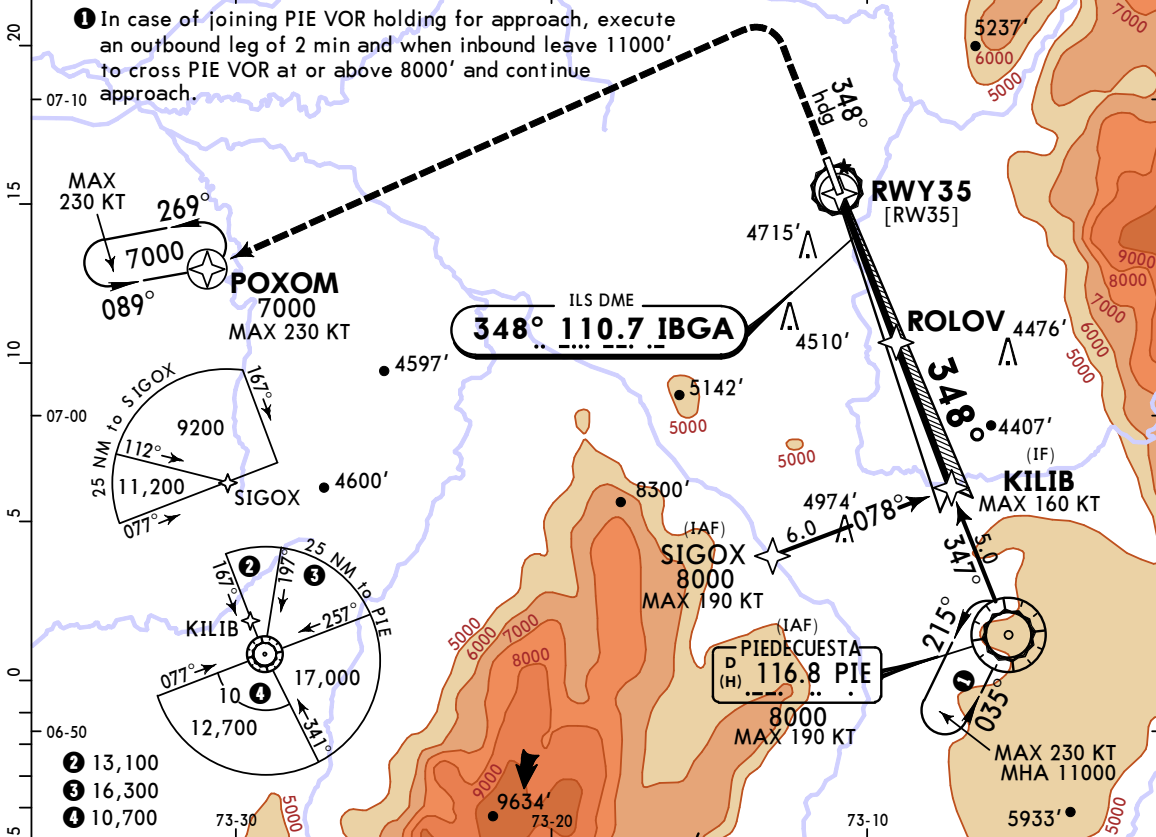
CHANGES: Procedure, minimums.

© JEPPESEN, 2007, 2020. ALL RIGHTS RESERVED.

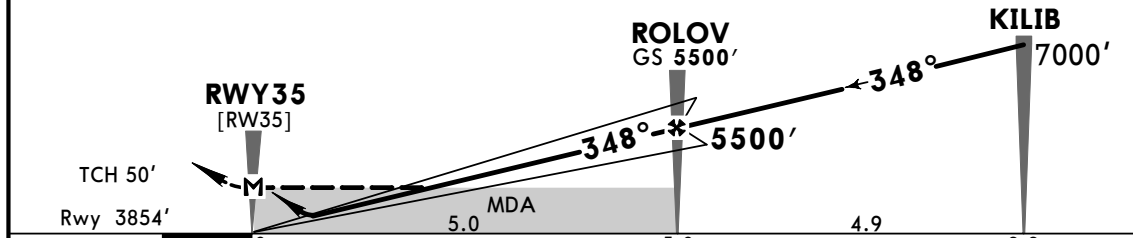
SKBG/BGA
PALONEGRO

JEPPESEN BUCARAMANGA, COLOMBIA
7 AUG 20 (11-2) Eff 13 Aug ILS Y or LOC Y Rwy 35

*ATIS 127.75		*BUCARAMANGA Approach 119.0		*PALONEGRO Tower 118.3	
LOC IBGA 110.7	Final Apch Crs 348°	ROLOV 5500' (1646')	ILS DA(H) 4220' (366')	Apt Elev 3901'	Rwy 3854'
MISSED APCH: Climb on 348° heading until crossing 6000', then turn LEFT to POXOM holding pattern, climbing to 7000'.					TAA 25 NM SIGOX, PIE VOR
RNP 1 or RNAV 1	Alt Set: IN (hPa on req)	Trans level: FL 190	Trans alt: 18000'		
1. GNSS certification required. 2. CAUTION: Possibility of wind shear on final due to terrain depressions. 3. Holding at POXOM and EJA VOR simultaneously is prohibited.					



LOC	Dist to THR	1.0	2.0	3.0	4.0	5.0
(GS out)	ALTITUDE	4222'	4541'	4859'	5178'	5500'



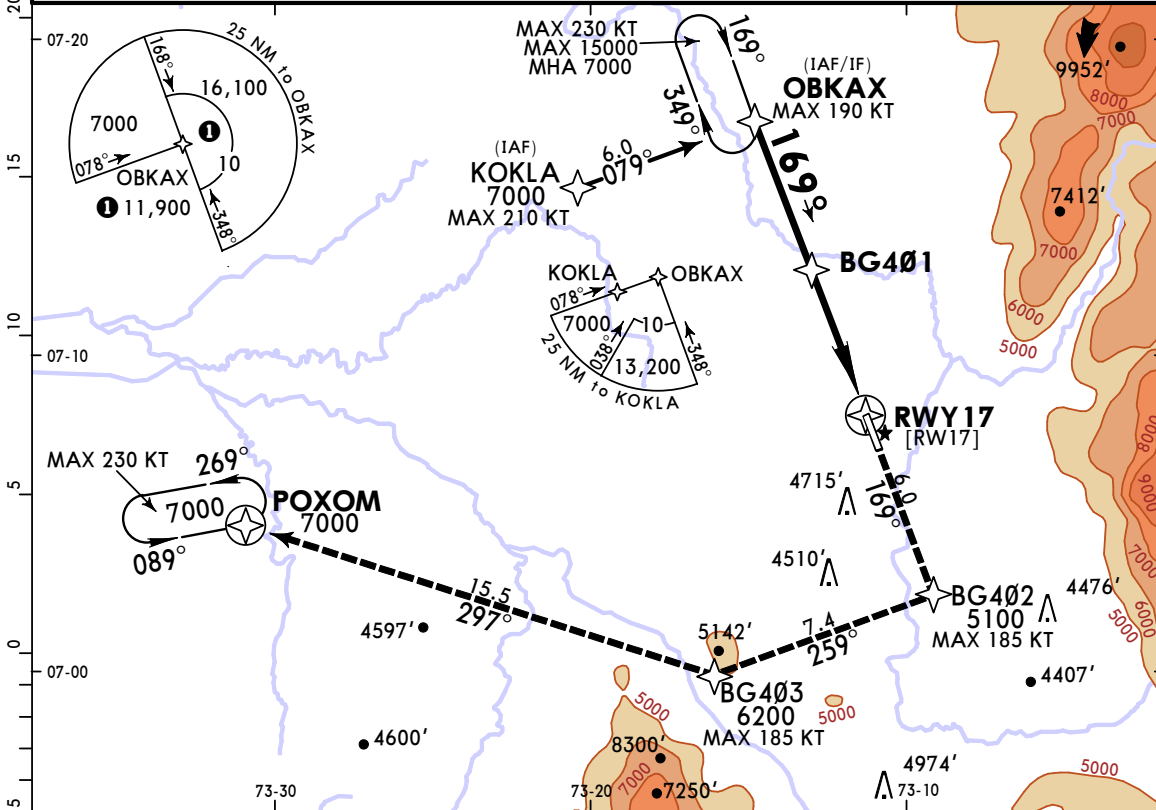
Gnd speed-Kts	70	90	100	120	140	160	PAPI-L	6000' on 348° hdg
GS	3.00°	372	478	531	637	743		

STRAIGHT-IN LANDING RWY 35		CIRCLE-TO-LAND	
ILS	LOC (GS out)	MDA(H)	
DA(H) 4220' (366')	MDA(H) 4380' (526')	Max Kts	MDA(H)
A		100	5050' (1149') -5000m
B	1800m	135	5150' (1249') -5000m
C		180	5150' (1249') -5000m
D		205	5480' (1579') -5000m

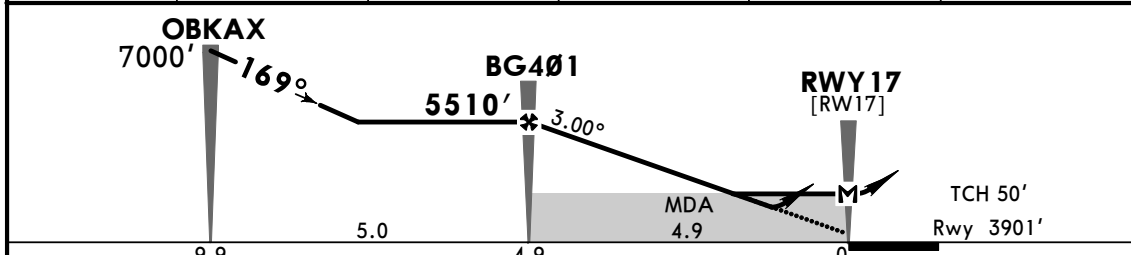
*ATIS 127.75		*BUCARAMANGA Approach 119.0		*PALONEGRO Tower 118.3	
RNAV	Final Apch Crs 169°	BG401 5510' (1609')	LNAV/VNAV DA(H) 4300' (399')	Apt Elev 3901'	TAA 25 NM KOKLA, OBKAX
MISSED APCH: Follow RNAV track to POXOM climbing to 7000' and hold. Missed approach requires a minimum climb gradient of 3.3% and MAX 185 KT until BG403.				Rwy 3901'	

RNP Apch Alt Set: IN (hPa on req) Trans level: FL 190 Trans alt: 18000'

1. CAUTION: Possibility of wind shear on final due to terrain depressions. 2. Holding at POXOM and OBKAX can be used simultaneously up to 13000' at 230 KT. 3. For uncompensated Baro-VNAV systems, LNAV/VNAV not authorized below 15°C or above 41°C.



Dist to THR	6.0	5.0	4.0	3.0	2.0
ALTITUDE	5861'	5543'	5225'	4906'	4588'



Gnd speed-Kts	70	90	100	120	140	160	REIL PAPI-L	7000'	on	RNAV track	POXOM	
Descent Angle	3.00°	372	478	531	637	743						849
LNAV/VNAV: MAP at DA												
LNAV: MAP at RWY17												

STRAIGHT-IN LANDING RWY 17		CIRCLE-TO-LAND	
LNAV/VNAV DA(H)	LNAV MDA(H)	Max Kts	MDA(H)
4300' (399')	4480' (579')	100	5050' (1149') -5000m
2000m	3000m	135	5150' (1249') -5000m
		180	5150' (1249') -5000m
		205	5402' (1501') -5000m

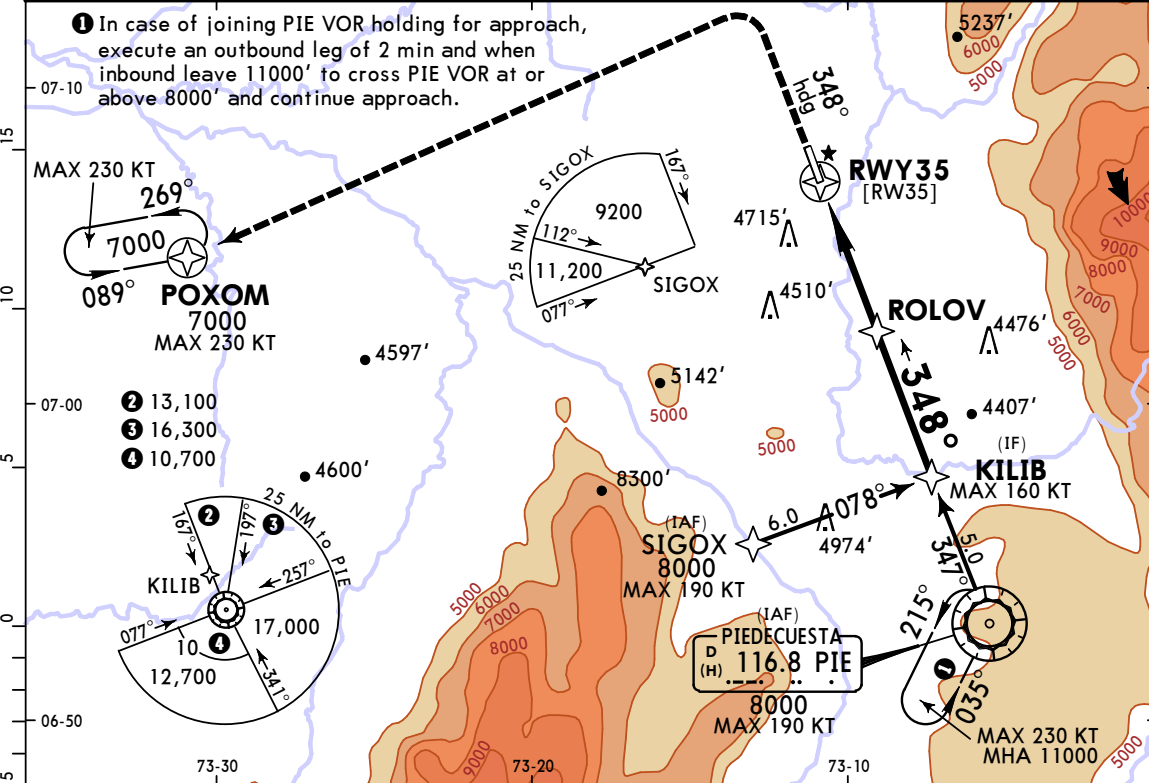
PANS OPS

SKBG/BGA
PALONEGRO

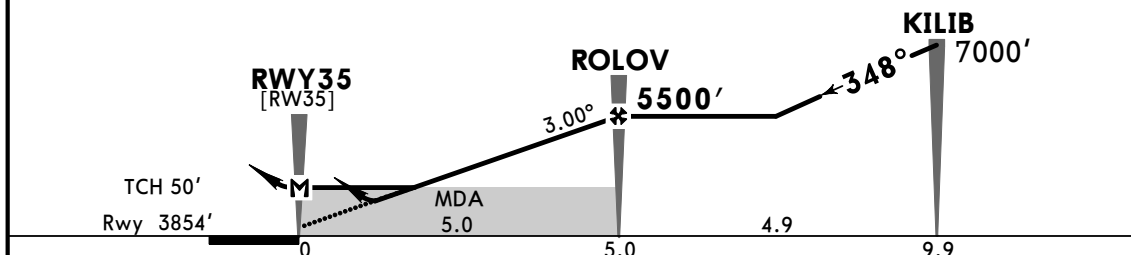
JEPPESEN
7 AUG 20 (12-2) Eff 13 Aug

BUCARAMANGA, COLOMBIA
RNP Rwy 35

*ATIS 127.75		*BUCARAMANGA Approach 119.0		*PALONEGRO Tower 118.3	
RNAV	Final Apch Crs 348°	ROLOV 5500' (1646')	LNAV/VNAV DA(H) 4300' (446')	Apt Elev 3901' Rwy 3854'	TAA 25 NM SIGOX, PIE VOR
MISSED APCH: Climb on 348° heading until crossing 6000' then turn LEFT to POXOM holding pattern, climbing to 7000'.					
RNP Apch	Alt Set: IN (hPa on req)	Trans level: FL 190		Trans alt: 18000'	
1. CAUTION: Possibility of wind shear on final due to terrain depressions. 2. Holding at POXOM and EJA VOR simultaneously is prohibited. 3. For uncompensated Baro-VNAV systems LNAV/VNAV not authorized below 15°C or above 41°C.					



Dist to THR	2.0	3.0	4.0	5.0	6.0
ALTITUDE	4540'	4860'	5180'	5500'	5820'



Gnd speed-Kts	70	90	100	120	140	160	PAPI-L 6000' on 348° hdg
Descent Angle	3.00°	372	478	531	637	743	
LNAV/VNAV: MAP at DA							
LNAV: MAP at RWY35							

STRAIGHT-IN LANDING RWY 35			CIRCLE-TO-LAND		
LNAV/VNAV DA(H) 4300' (446')		LNAV MDA(H) 4380' (526')		Max Kts	MDA(H)
A				100	5050' (1149') -5000m
B	2300m		2600m	135	5150' (1249') -5000m
C			2800m	180	5480' (1579') -5000m
D	2400m			205	

PANS OPS

CHANGES: Apt and Rwy elev, altitudes, minimums.

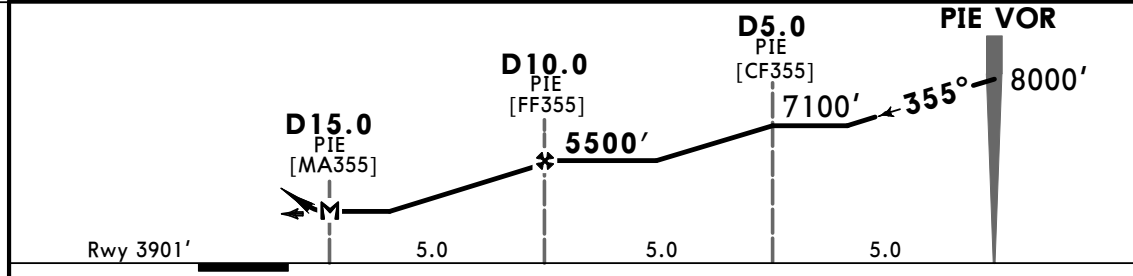
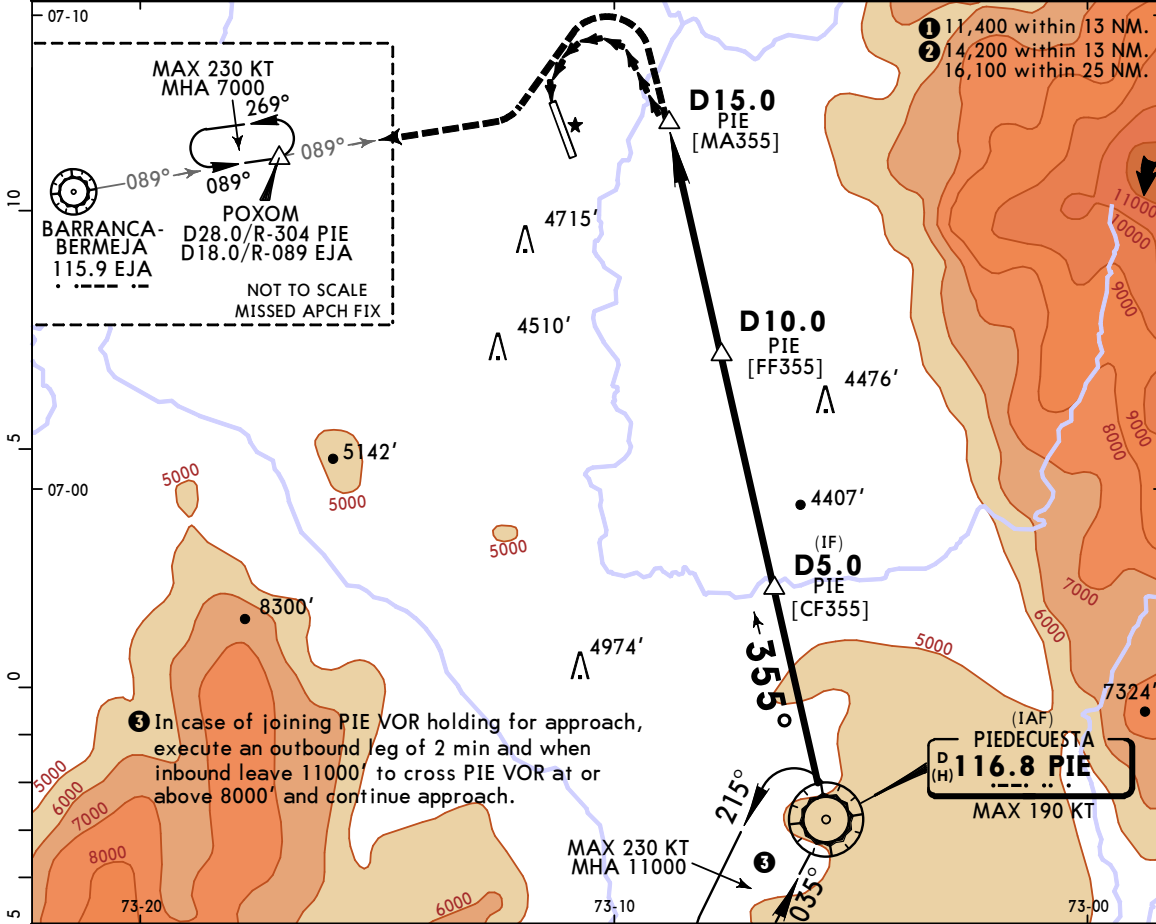
© JEPPESEN, 2017, 2020. ALL RIGHTS RESERVED.

SKBG/BGA
PALONEGRO

JEPPESEN
7 AUG 20 (13-1) Eff 13 Aug

BUCARAMANGA, COLOMBIA
VOR A Rwy 17

*ATIS 127.75		*BUCARAMANGA Approach 119.0		*PALONEGRO Tower 118.3		
VOR PIE 116.8	Final Apch Crs 355°	D10.0 PIE 5500' (1599')	MDA(H) Refer to Minimums	Apt Elev 3901'	Rwy 3901'	
MISSED APCH: Turn LEFT climbing to intercept EJA VOR R-089 inbound, proceed to POXOM holding pattern and 7000'.					<p>MSA ARP</p>	
Alt Set: IN (hPa on req)		Trans level: FL 190		Trans alt: 18000'		
1. PIE VOR DME required. 2. EJA VOR DME required. 3. Holding at POXOM and EJA VOR simultaneously is prohibited. 4. In case of go-around after the MAP, expect ATC instructions.						



MAP at D15.0 PIE						Lighting - Refer to Airport Chart	7000'	EJA 115.9 R-089
------------------	--	--	--	--	--	-----------------------------------	-------	-----------------

CIRCLE-TO-LAND

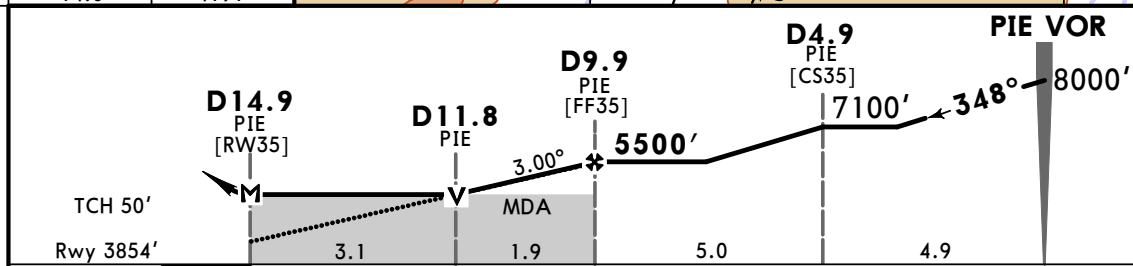
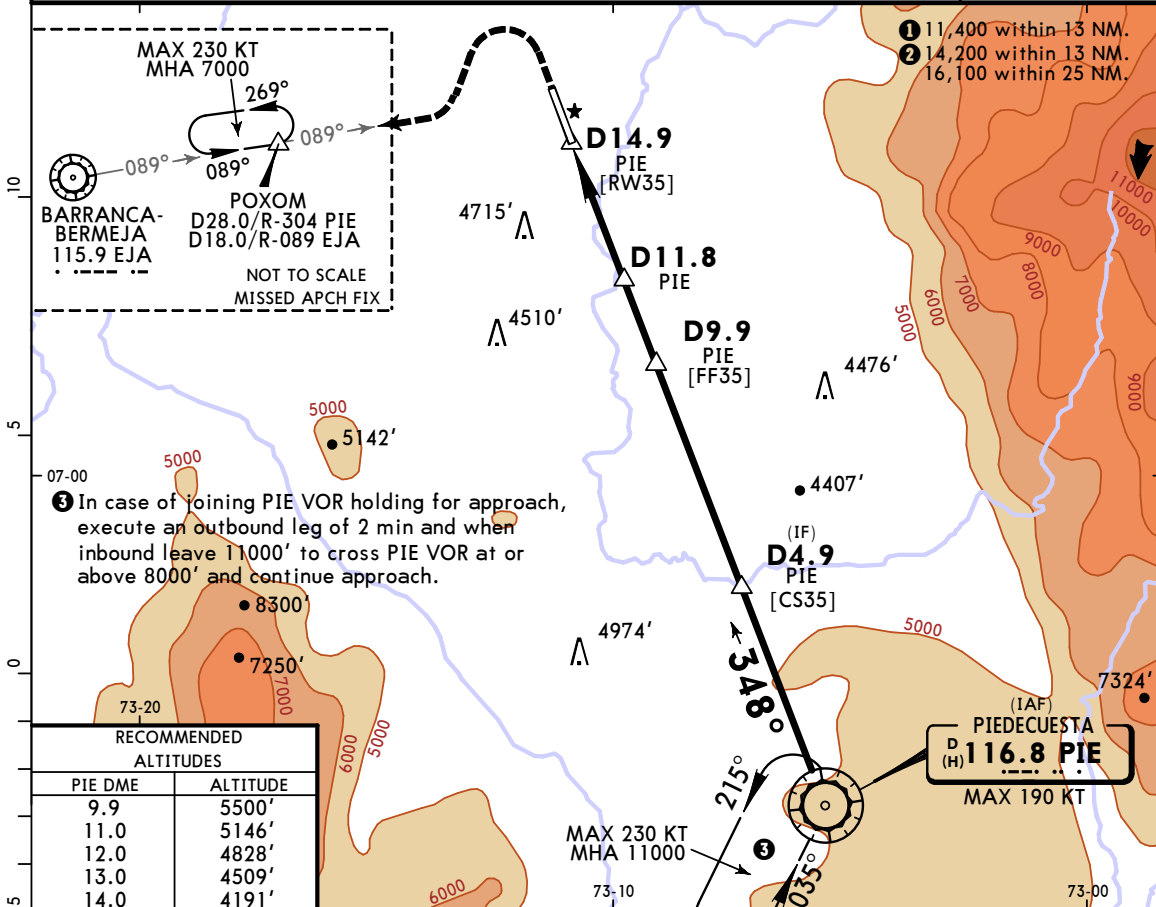
	Max Kts	MDA(H)
A	100	
B	135	
C	180	
D	205	5200' (1299') -5000m

SKBG/BGA
PALONEGRO

JEPPESEN
7 AUG 20 **(13-2)** Eff 13 Aug

BUCARAMANGA, COLOMBIA
VOR Rwy 35

*ATIS 127.75		*BUCARAMANGA Approach 119.0		*PALONEGRO Tower 118.3	
VOR PIE 116.8	Final Apch Crs 348°	D9.9 PIE 5500' (1646')	MDA(H) 4900' (1046')	Apt Elev 3901'	Rwy 3854'
MISSED APCH: Climb on runway heading until crossing 6000' then turn LEFT climbing to intercept EJA VOR R-089 inbound, proceed to POXOM holding pattern and 7000'.					
Alt Set: IN (hPa on req)		Trans level: FL 190		Trans alt: 18000'	
1. PIE VOR DME required. 2. EJA VOR DME required. 3. Holding at POXOM and EJA VOR simultaneously is prohibited.					



Gnd speed-Kts	70	90	100	120	140	160	PAPI-L	↑ on RWY hdg	Until Crossing 6000'
Descent Angle 3.00°	372	478	531	637	743	849			
MAP at D14.9 PIE or FAF to MAP	5.0	4:17	3:20	3:00	2:30	2:09			

STRAIGHT-IN LANDING RWY35					CIRCLE-TO-LAND					
MDA(H) 4900' (1046')										
A										
B	4900m					NA				
C										
D	5000m									

CHANGES: Procedure, minimums.

© JEPPESEN, 2020. ALL RIGHTS RESERVED.