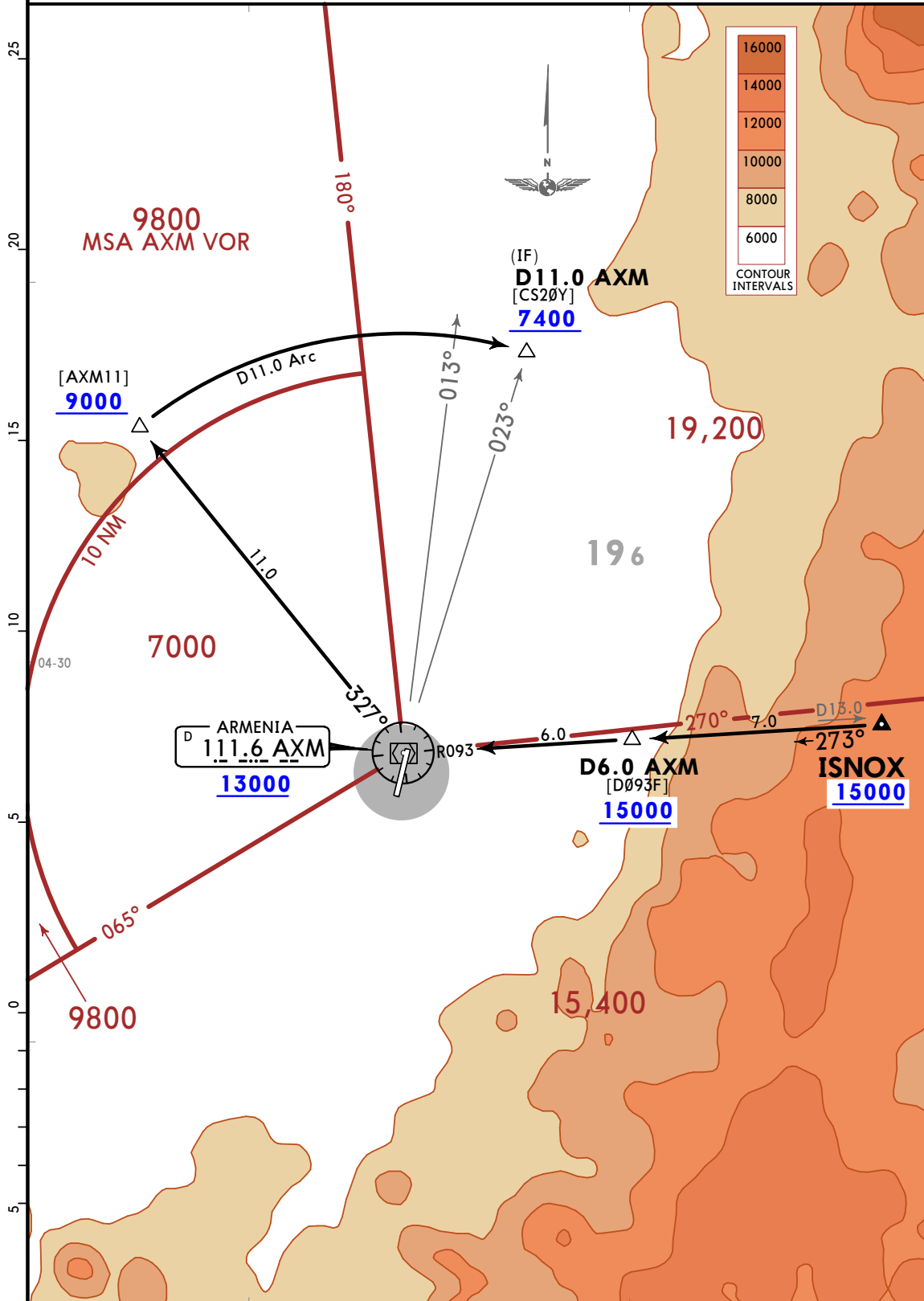


Apt Elev  
3976

Alt Set: IN (hPa on req) Trans level: FL190  
1. AXM DME required.  
2. For VOR Y RWY 20 approach.

### ISNOX 1F ARRIVAL [ISNO1F] (RWY 20)

CAT A, B & C

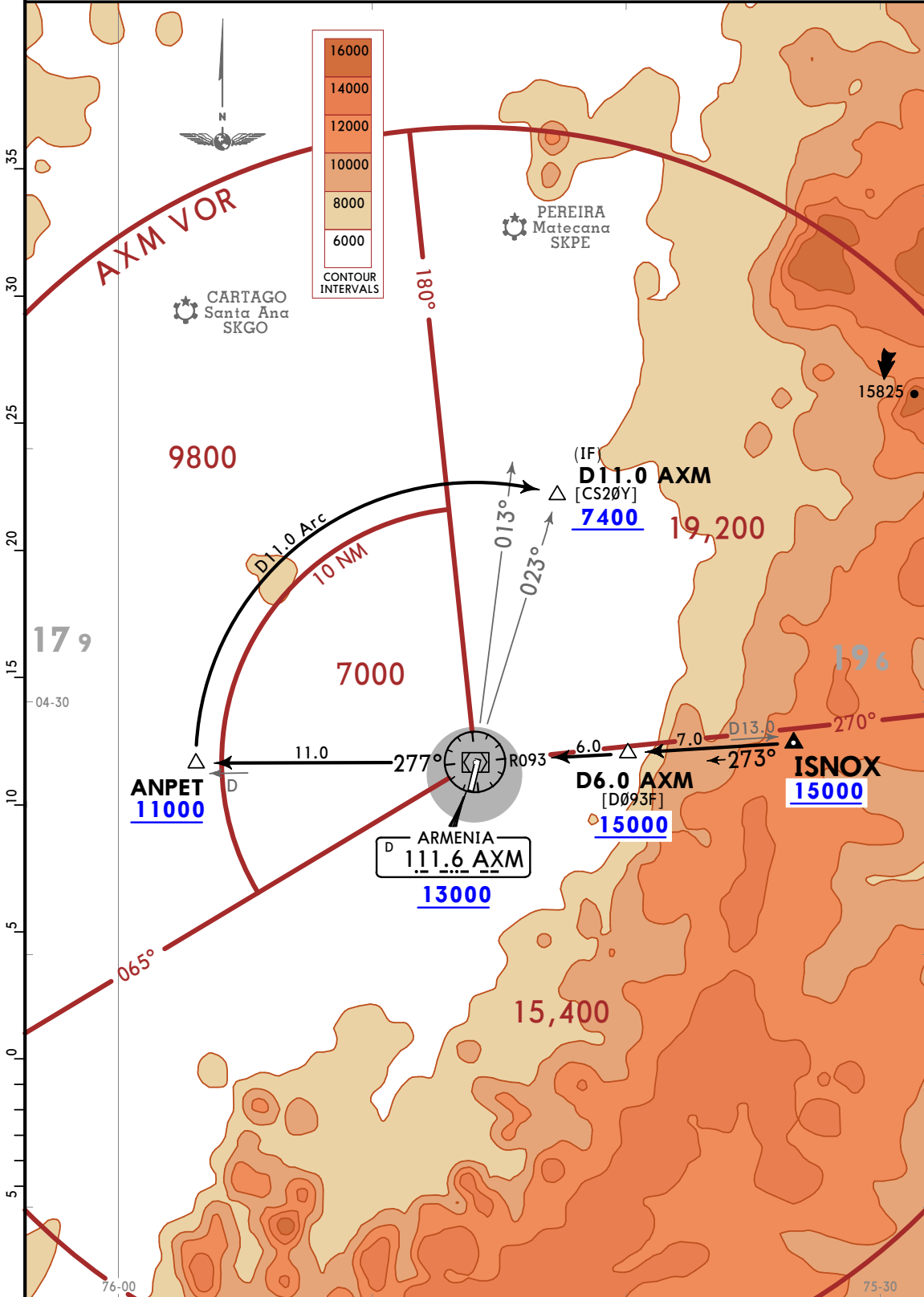


Apt Elev  
3976

Alt Set: IN (hPa on req) Trans level: FL190  
1. AXM DME required.  
2. For VOR Y RWY 20 approach.

### ISNOX 1G ARRIVAL [ISNO1G] (RWY 20)

CAT A, B & C

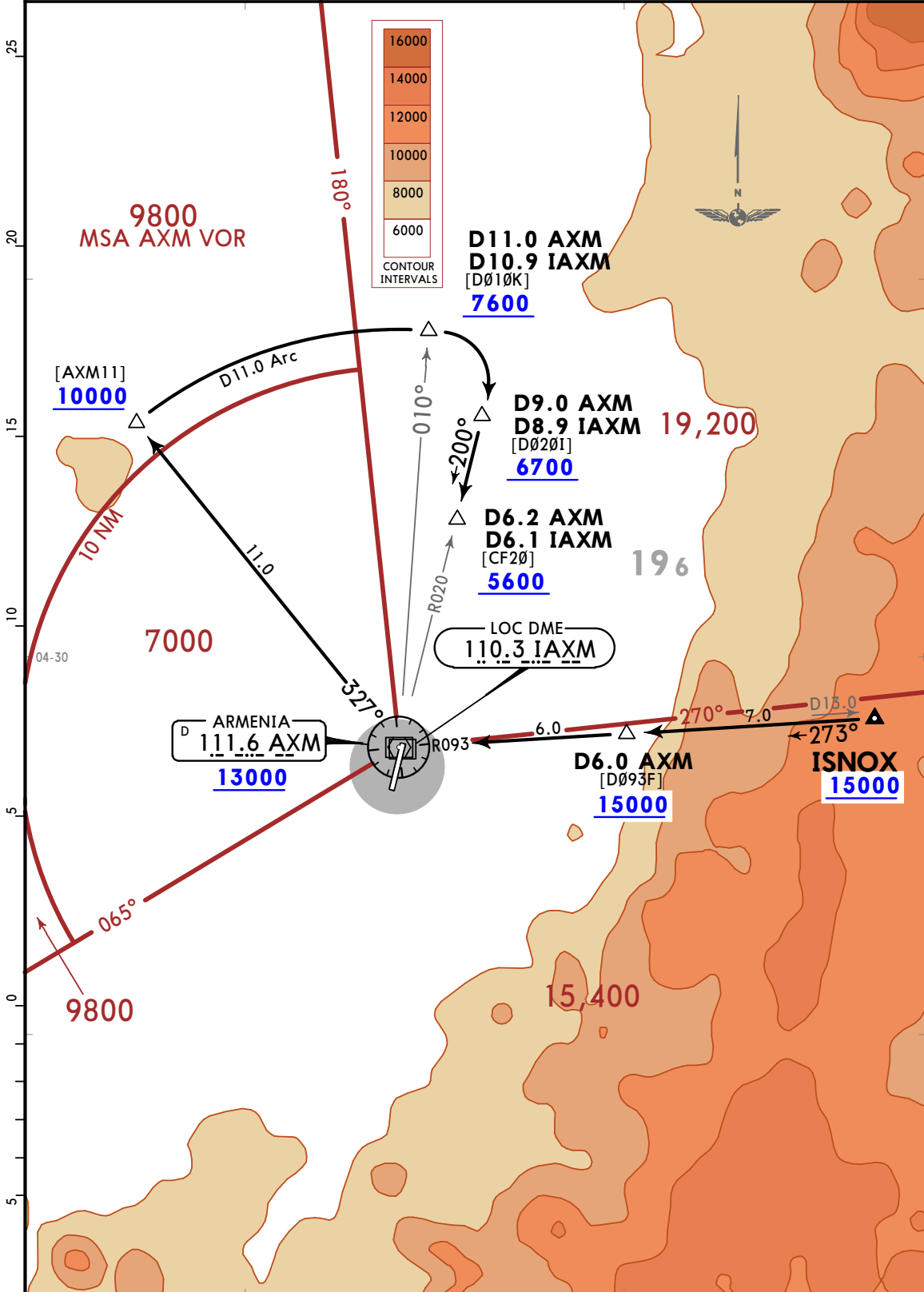


Apt Elev  
3976

Alt Set: hPa (IN on req) Trans level: FL190  
1. AXM DME required.  
2. For ILS or LOC RWY 20 approach.

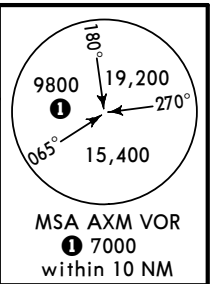
### ISNOX 2H ARRIVAL [ISNO2H] (RWY 20)

CAT A, B & C



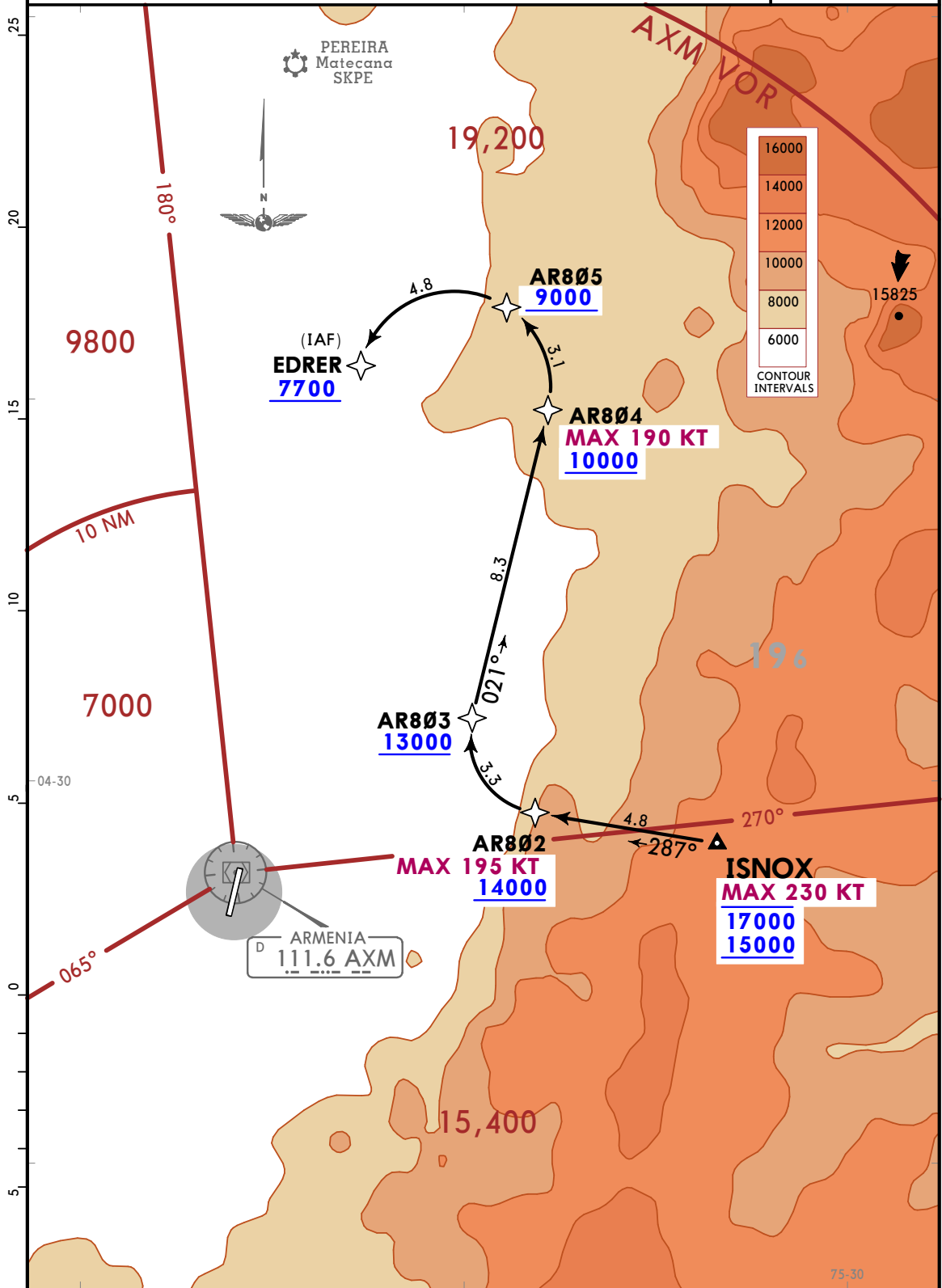


Apt Elev 3976  
Alt Set: IN (hPa on req) Trans level: FL190  
1. RNP 1.  
2. RF required.



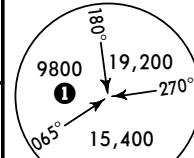
ISNOX 1K RNAV (GNSS) ARRIVAL [ISNO1K]  
(RWY 20)

CAT A, B & C



Apt Elev  
3976

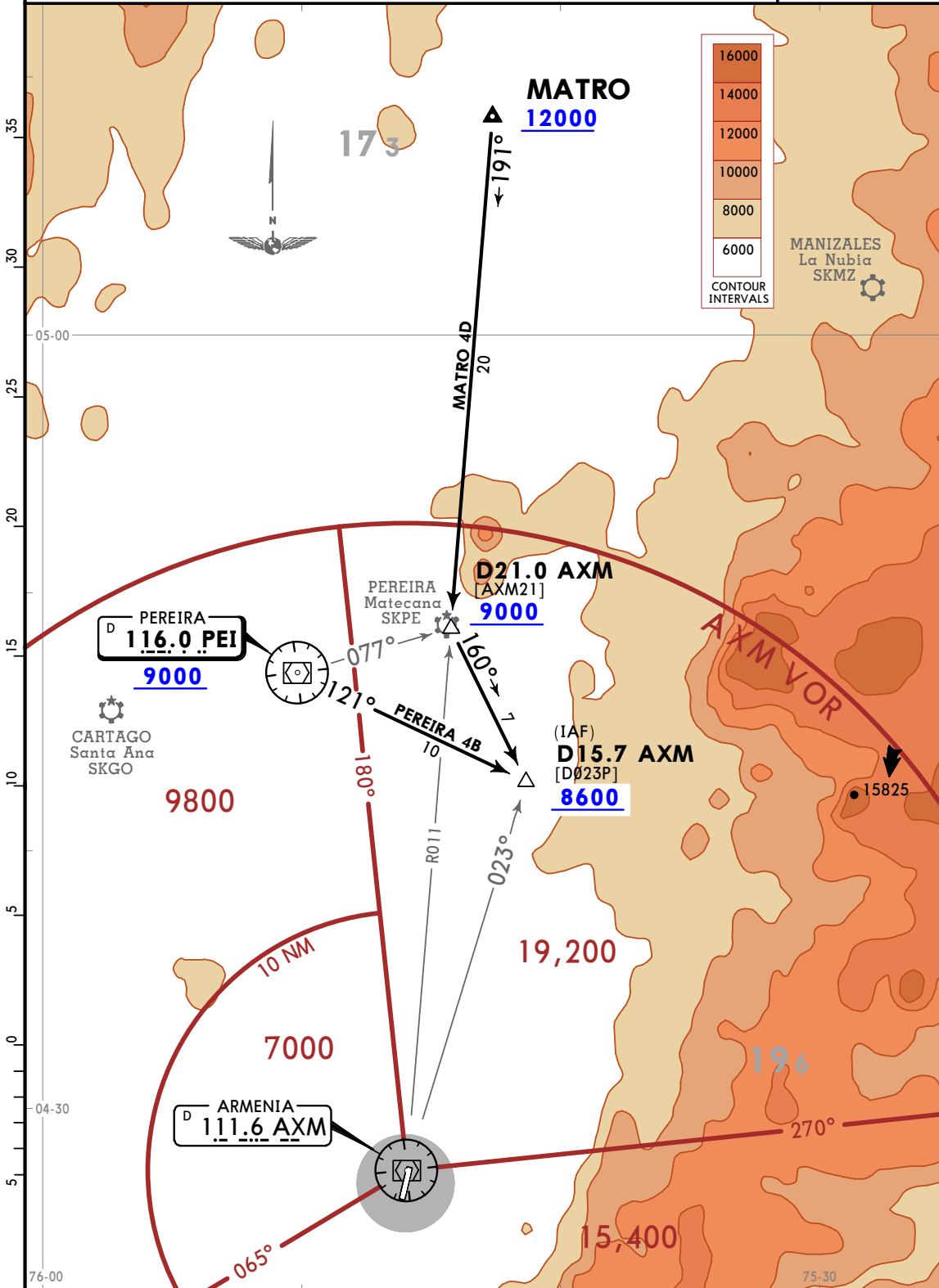
Alt Set: IN (hPa on req) Trans level: FL190  
1. PEI and AXM VORs required.  
2. For VOR Y RWY 20 approach.



MSA AXM VOR  
7000  
within 10 NM

**MATRO 4D [MATR4D], PEREIRA 4B [PEI4B]  
ARRIVALS  
(RWY 20)**

CAT A, B & C

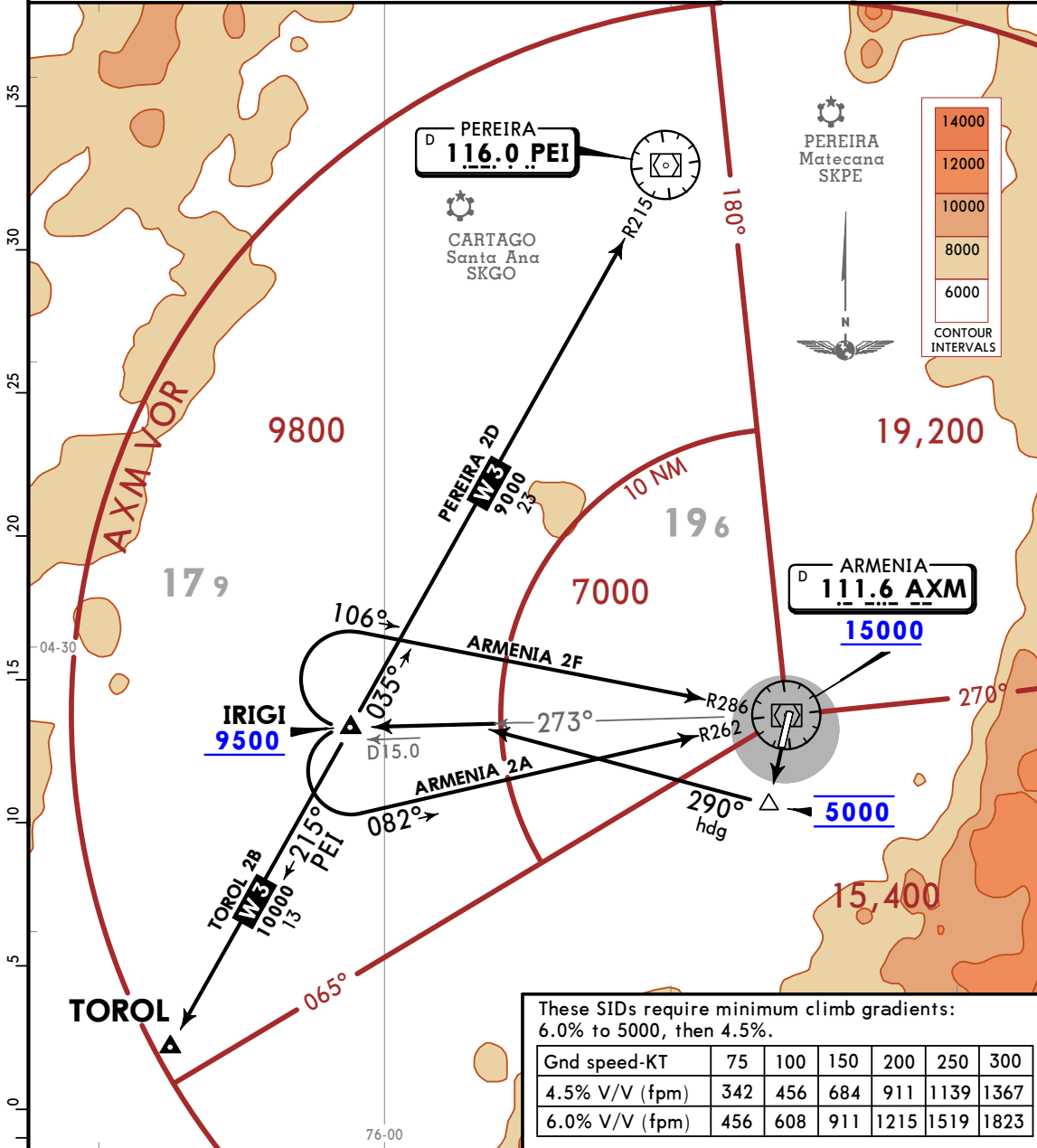


Apt Elev  
3976

Trans alt: 18000

ARMENIA 2A [AXM2A], ARMENIA 2F [AXM2F]  
PEREIRA 2D [PEI2D], TOROL 2B [TORO2B]  
DEPARTURES  
(RWY 20)

CAT A, B & C



INITIAL CLIMB

Climb on runway heading until reaching 5000. Then turn RIGHT heading 290° to intercept AXM R273, continue climb to cross IRIGI at or above 9500.

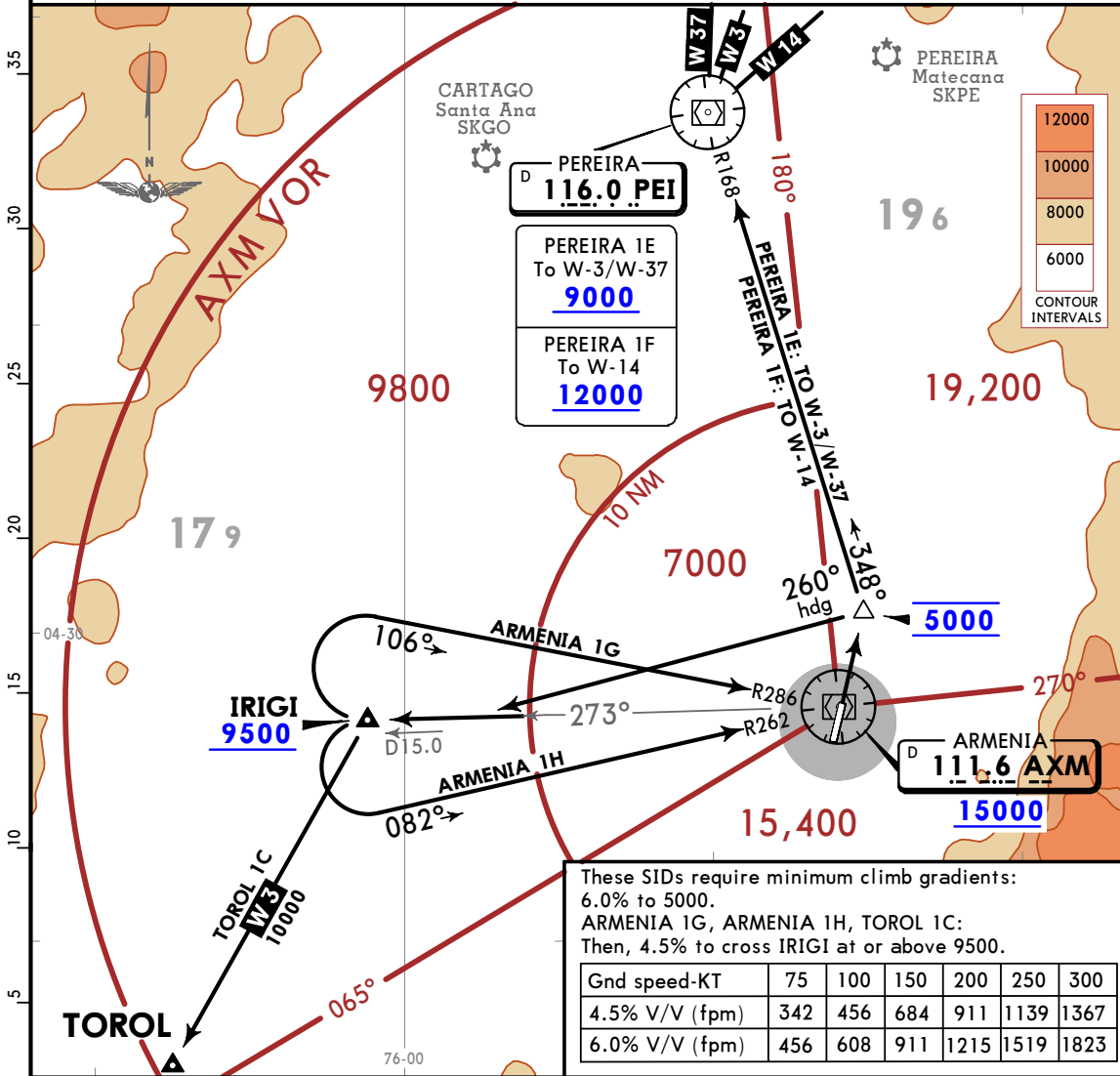
SID	ROUTING
ARMENIA 2A	At IRIGI, turn LEFT to intercept AXM R262 to AXM VOR.
ARMENIA 2F	At IRIGI, turn RIGHT to intercept AXM R286 to AXM VOR.
PEREIRA 2D	At IRIGI, intercept PEI R215 to PEI VOR.
TOROL 2B	At IRIGI, intercept PEI R215 to TOROL.

Apt Elev  
3976

Trans alt: 18000

ARMENIA 1G [AXM1G], ARMENIA 1H [AXM1H]  
PEREIRA 1E [PEI1E], PEREIRA 1F [PEI1F]  
TOROL 1C [TORO1C]  
DEPARTURES  
(RWY 02)

CAT A, B & C



INITIAL CLIMB

Climb on runway heading until reaching 5000.

SID	ROUTING
<b>ARMENIA 1G</b>	At 5000, turn LEFT heading 260° to intercept AXM R273 to cross IRIGI at or above 9500. Turn RIGHT to intercept AXM R286 to AXM VOR.
<b>ARMENIA 1H</b>	At 5000, turn LEFT heading 260° to intercept AXM R273 to cross IRIGI at or above 9500. Turn LEFT to intercept AXM R262 to AXM VOR.
<b>PEREIRA 1E</b>	At 5000, turn LEFT to intercept PEI R168 to cross PEI VOR at or above 9000 and continue on W-3/W-37.
<b>PEREIRA 1F</b>	At 5000, turn LEFT to intercept PEI R168 to cross PEI VOR at or above 12000 to continue on W-14.
<b>TOROL 1C</b>	At 5000, turn LEFT heading 260° to intercept AXM R273 to cross IRIGI at or above 9500. Intercept W-3 to TOROL.

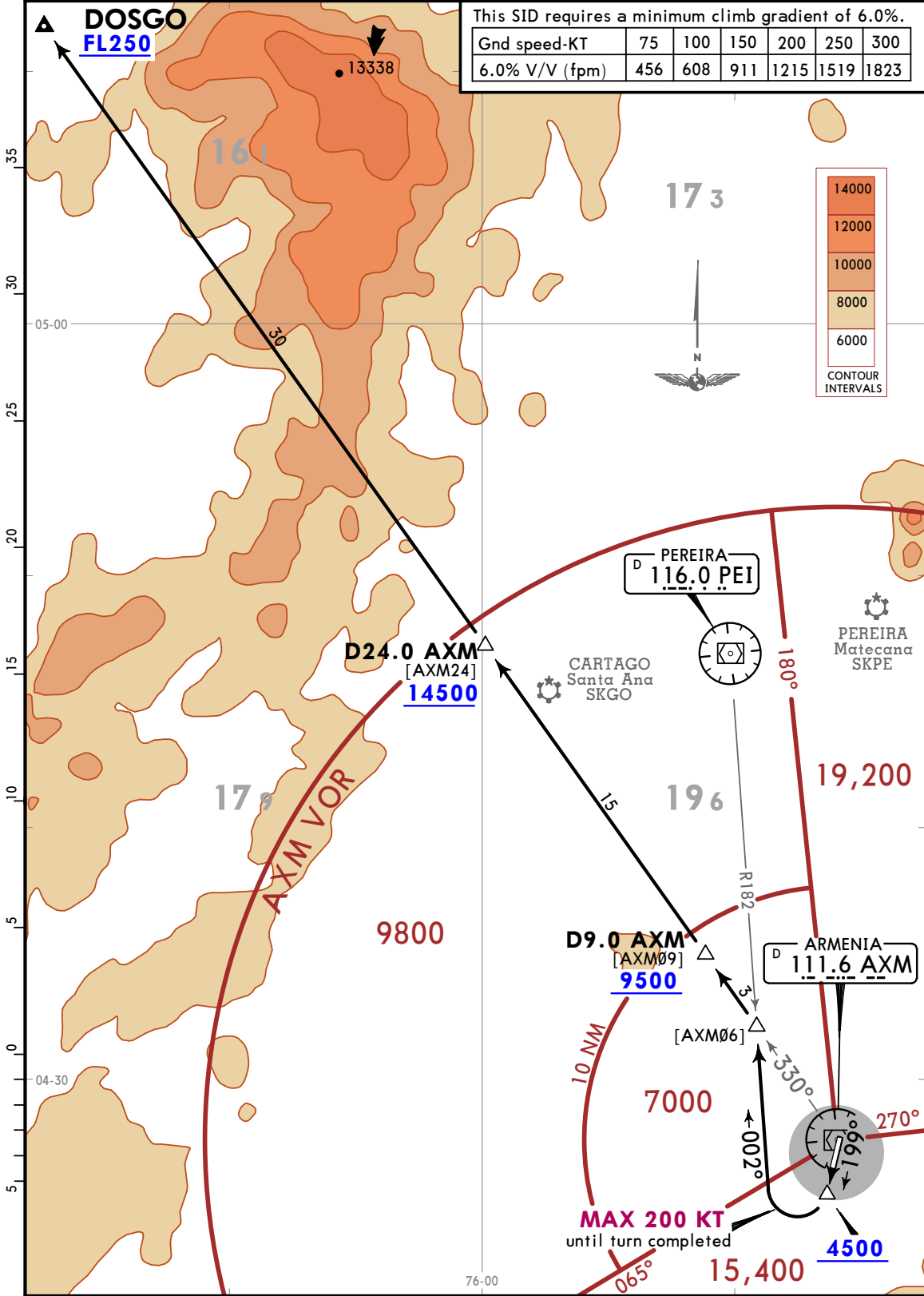
Apt Elev <b>3976</b>	Trans alt: 18000
-------------------------	------------------

**DOSGO 2A DEPARTURE [DOSG2A]**  
**(RWY 20)**

CAT A, B & C

This SID requires a minimum climb gradient of 6.0%.

Gnd speed-KT	75	100	150	200	250	300
6.0% V/V (fpm)	456	608	911	1215	1519	1823



CHANGES: New format.

© JEPPESEN, 2021. ALL RIGHTS RESERVED.

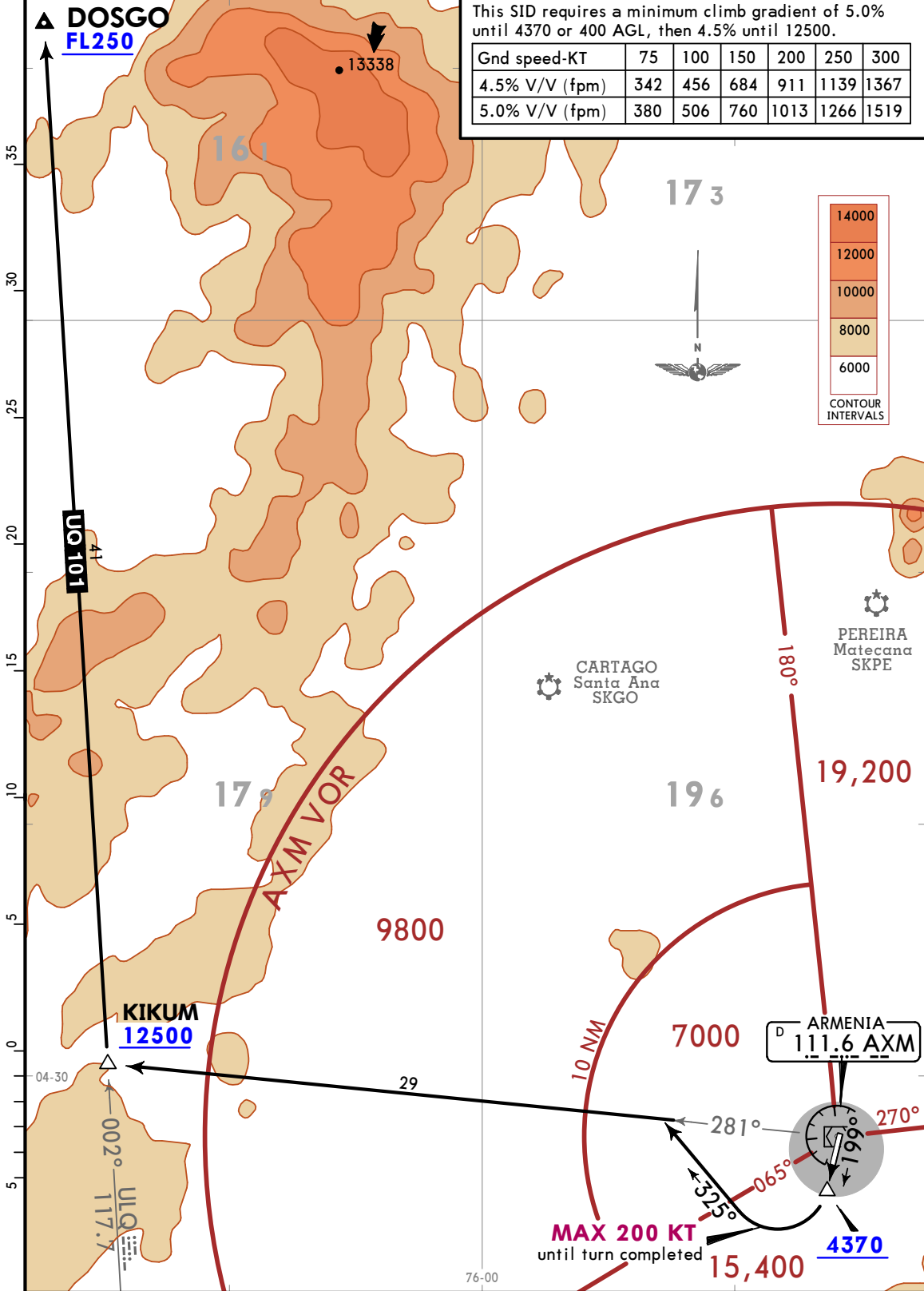
Apt Elev <b>3976</b>	Trans alt: 18000
-------------------------	------------------

**DOSGO 5B DEPARTURE [DOSG5B]  
(RWY 20)**

CAT A, B & C

This SID requires a minimum climb gradient of 5.0% until 4370 or 400 AGL, then 4.5% until 12500.

Gnd speed-KT	75	100	150	200	250	300
4.5% V/V (fpm)	342	456	684	911	1139	1367
5.0% V/V (fpm)	380	506	760	1013	1266	1519

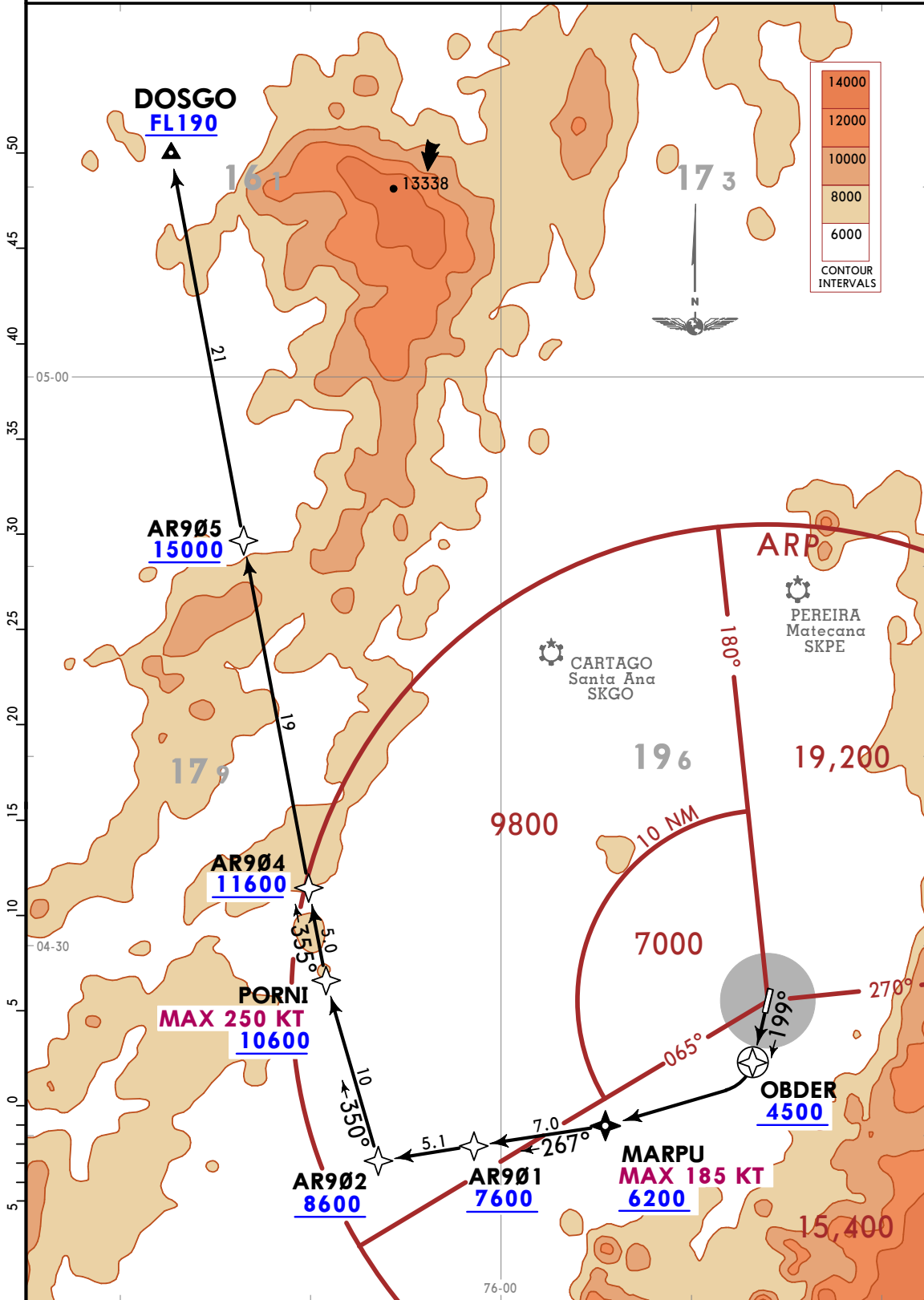


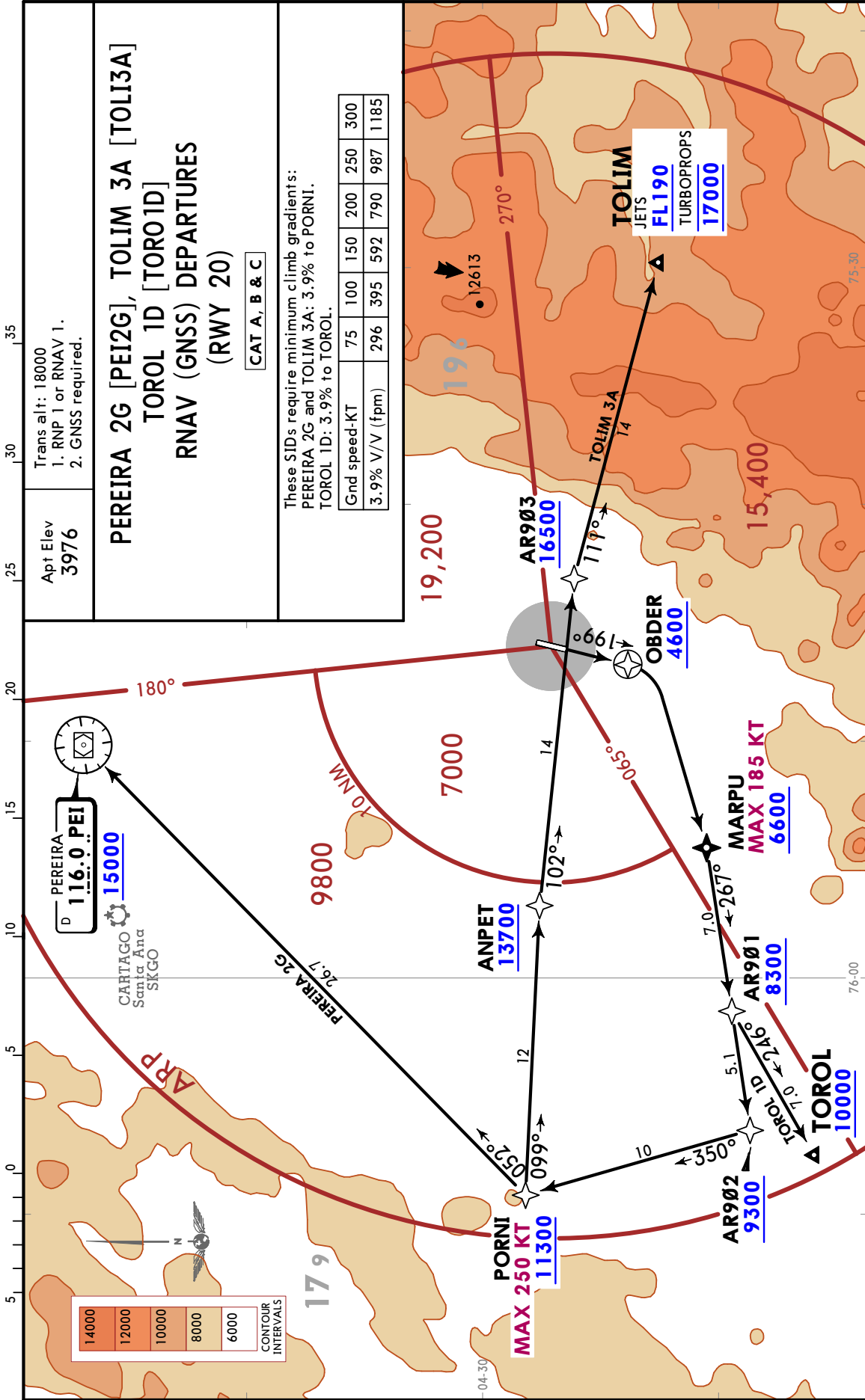
Apt Elev  
3976

Trans alt: 18000  
1. RNAV 1 certification required.  
2. GNSS required.

DOSGO 1C RNAV (GNSS) DEPARTURE [DOSG1C]  
(RWY 20)

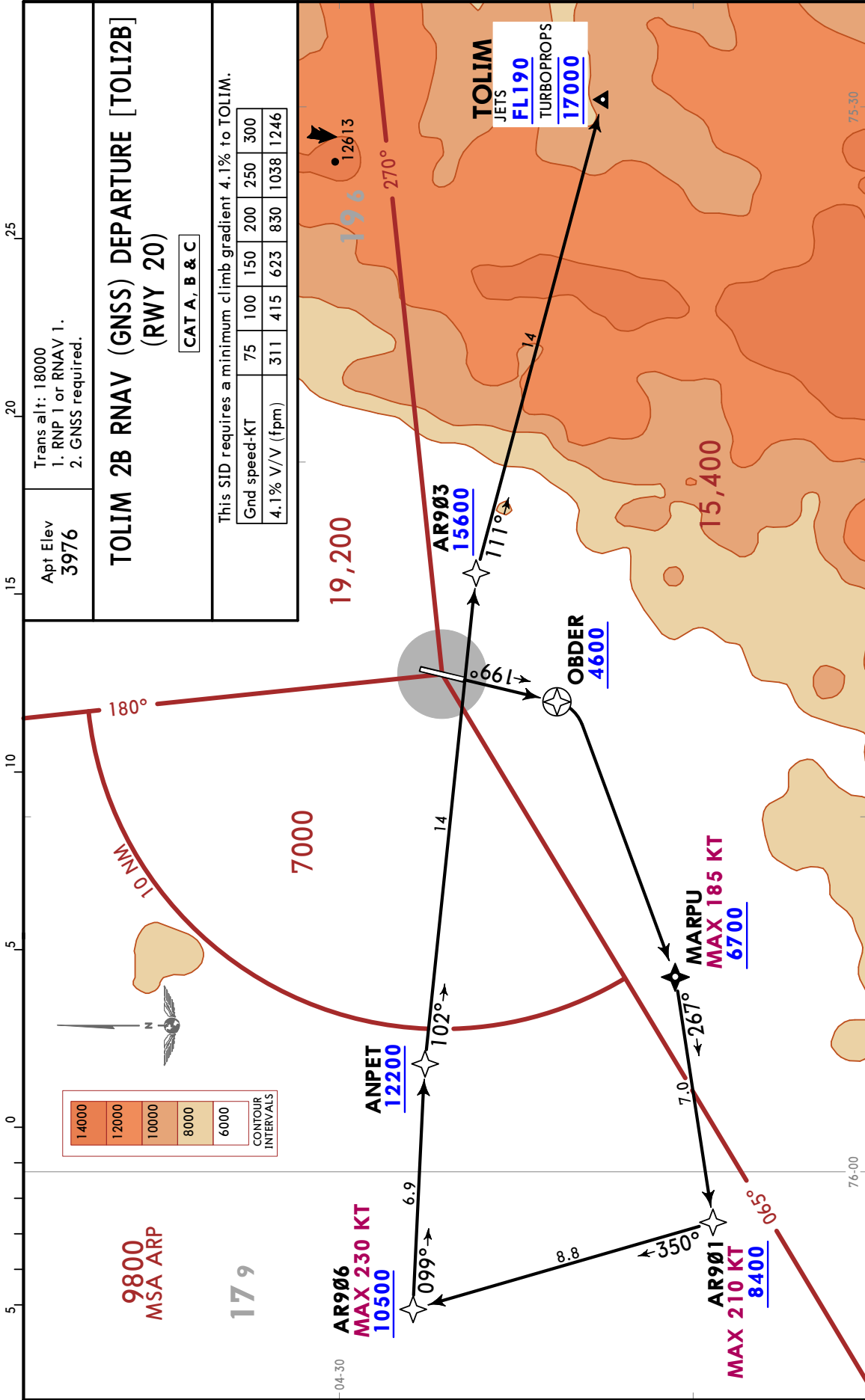
CAT A, B & C

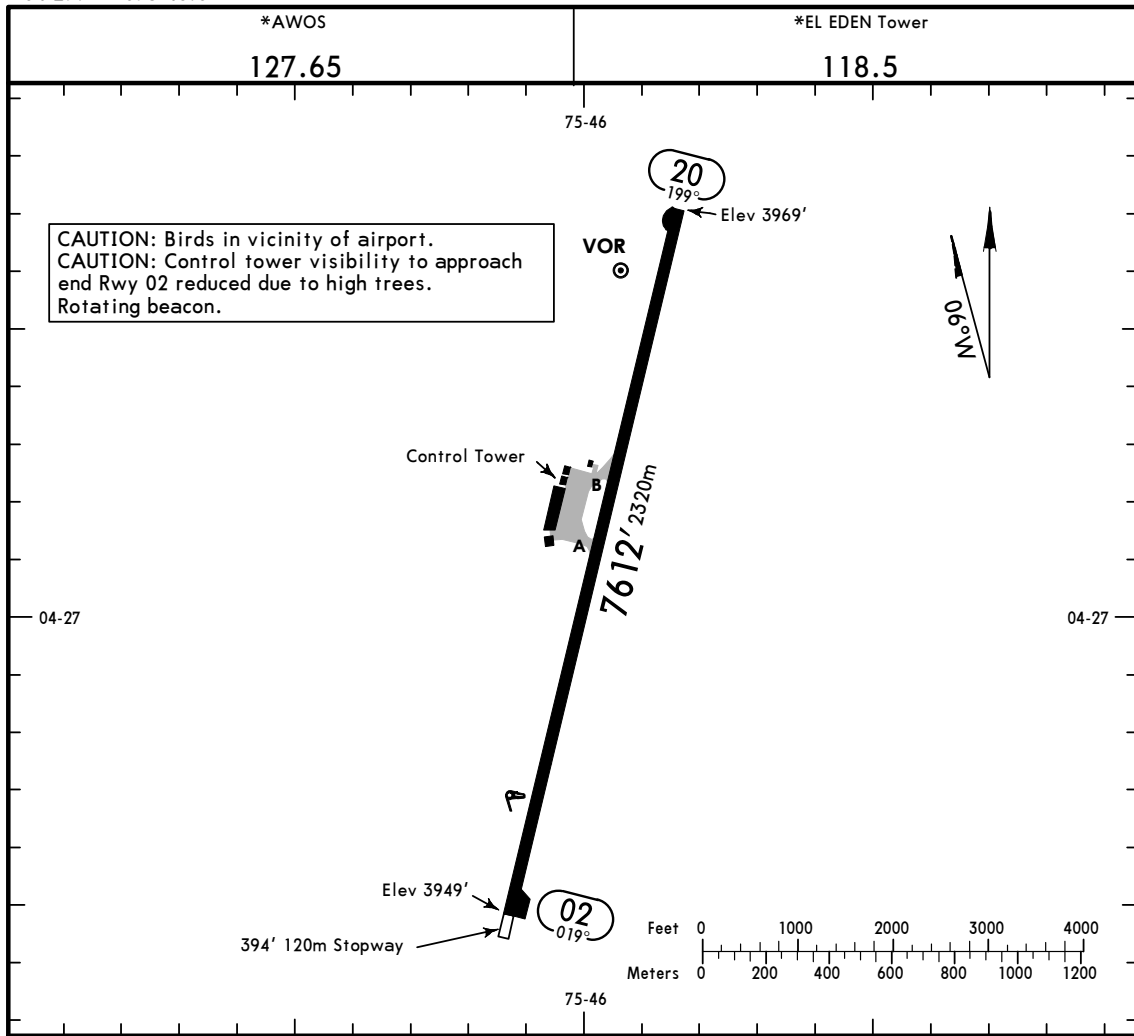




CHANGES: New format.

© JEPPESEN, 2021. ALL RIGHTS RESERVED.





ADDITIONAL RUNWAY INFORMATION

RWY		USABLE LENGTHS			WIDTH
		LANDING BEYOND Threshold	Glide Slope	TAKE-OFF	
02 20	RL PAPI-L (angle 3.0°)		6707' 2044m		118' 36m

TAKE-OFF		All Rwys	STD
Eng	Altitude		
1	1000' - 2800m		
2	1 hour alternate (1 Eng inop) 500m		1600m
3 & 4	2 hour alternate (1 Eng inop) 500m		800m

**1** Lower than standard take-off minimums available only with prior appropriate approvals and approved instrument departure for one engine inop after V1.

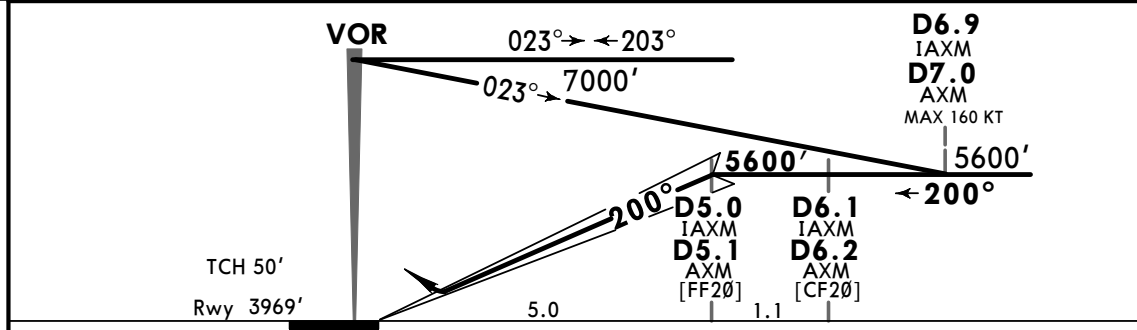
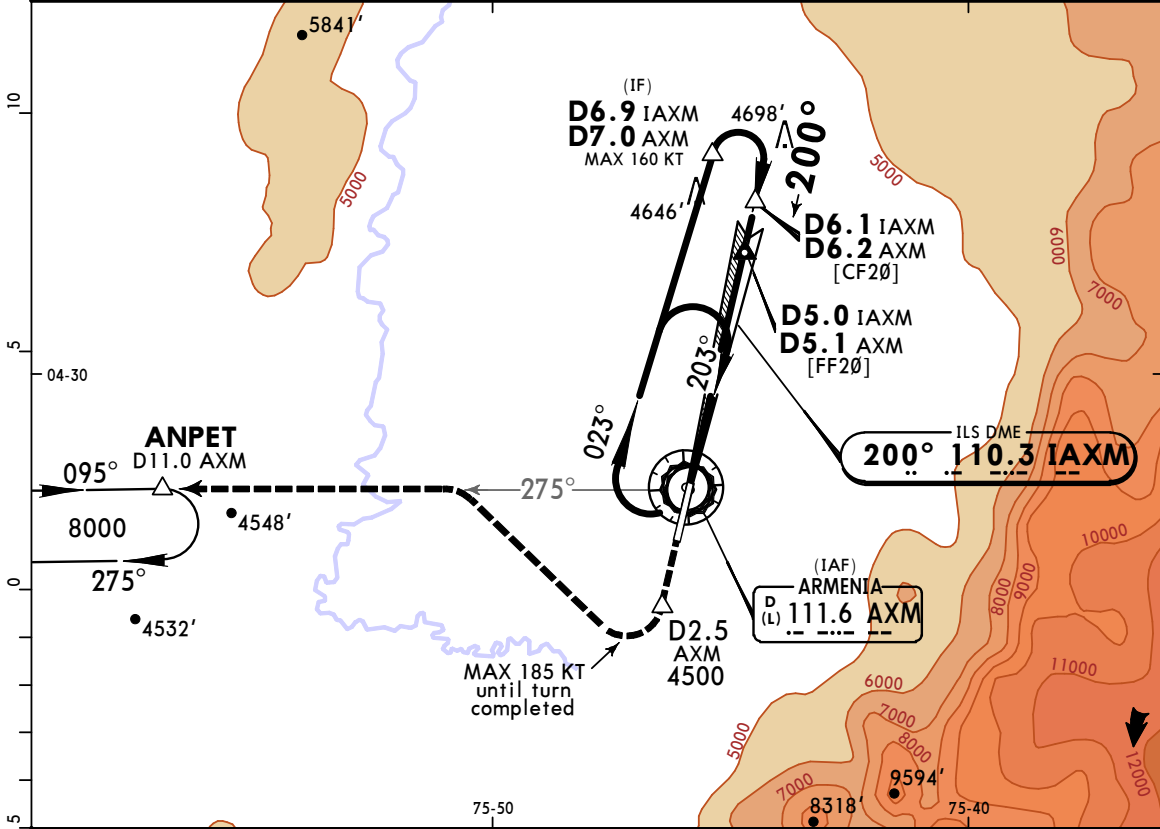
**2** Alternate meteorological minimums above published values. With appropriate aircrew qualifications and aircraft certifications.  
 Weather at Pereira must be above meteorological minimums for its use as an alternate.

SKAR/AXM  
EL EDEN

JEPPESEN  
1 OCT 21 (11-1)

ARMENIA, COLOMBIA  
CAT A, B & C ILS Z Rwy 20

*AWOS 127.65		*PEREIRA Approach 120.7		*EL EDEN Tower 118.5	
LOC IAXM <b>110.3</b>	Final Apch Crs <b>200°</b>	D5.0 IAXM D5.1 AXM <b>5600'</b> (1631')	ILS DA(H) <b>4170'</b> (201')	Apt Elev 3976' Rwy 3969'	
<b>MISSED APCH:</b> Maintain runway heading to D2.5 AXM, turn RIGHT to intercept and follow AXM VOR R-275 to ANPET climbing to 8000' and hold.					
Alt Set: IN (hPa on req)		Trans level: FL 190		Trans alt: 18000'	
1. AXM DME or IAXM DME required. 2. Simultaneous holding at the same altitude not authorized.					
					MSA AXM VOR ① 7000 Within 10 NM



Gnd speed-Kts	70	90	100	120	140	160	PAPI-L	Rwy hdg	D2.5 AXM
GS	3.00°	372	478	531	637	849			

STRAIGHT-IN LANDING RWY 20 DA(H) <b>4170'</b> (201')		CIRCLE-TO-LAND	
A	1200m	Max Kts	MDA(H)
B		100	<b>4470'</b> (494') -2300m
C		135	<b>4690'</b> (714') -3600m
D	NOT APPLICABLE	180	<b>① 4690'</b> (714') -3600m
D	NOT APPLICABLE	D	NOT APPLICABLE

PANS OPS

① Not authorized East of Airport.

CHANGES: Chart format, topography.

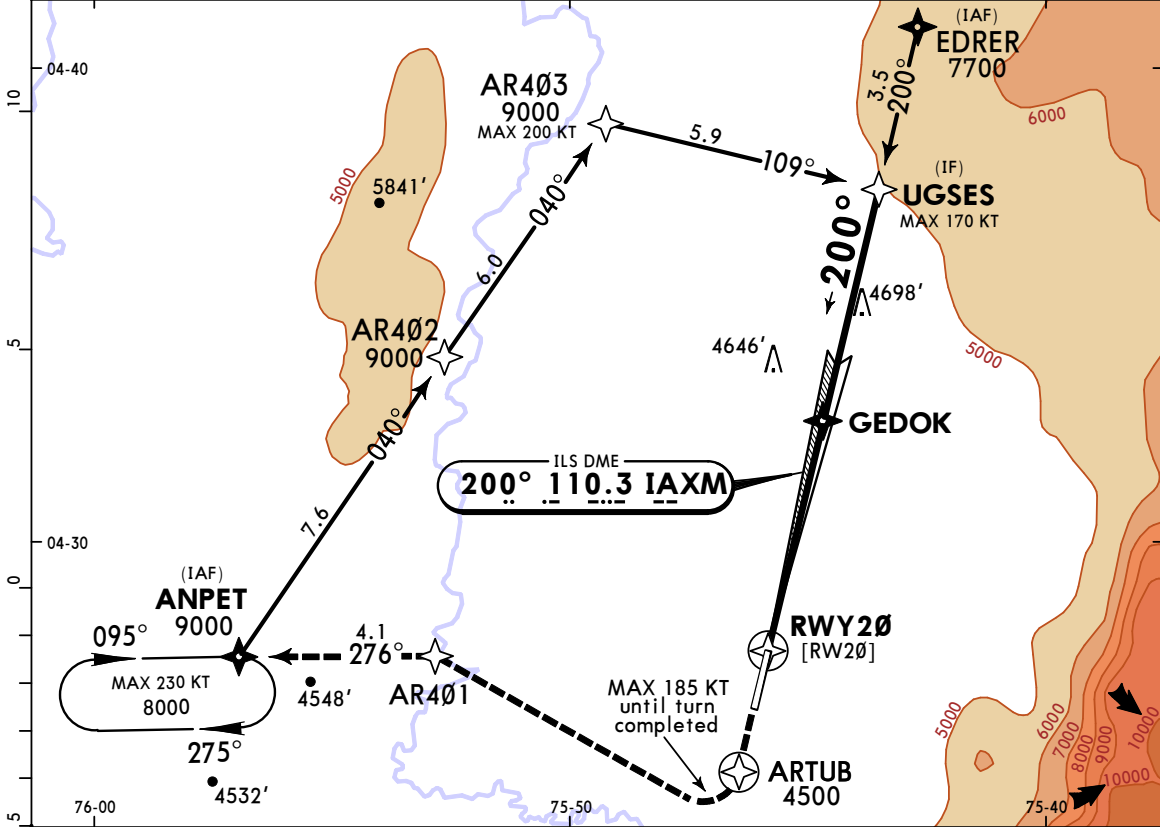
© JEPPESEN, 2016, 2021. ALL RIGHTS RESERVED.

SKAR/AXM  
EL EDEN

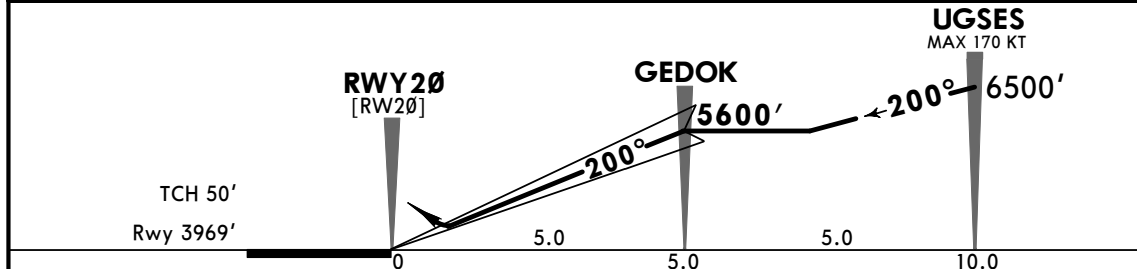
JEPPESEN  
1 OCT 21 (11-2)

ARMENIA, COLOMBIA  
CAT A, B & C ILS Y Rwy 20

*AWOS 127.65		*PEREIRA Approach 120.7		*EL EDEN Tower 118.5	
LOC IAXM <b>110.3</b>	Final Apch Crs <b>200°</b>	GEDOK <b>5600'</b> (1631')	ILS DA(H) <b>4170'</b> (201')	Apt Elev 3976'	Rwy 3969'
<b>MISSED APCH: Maintain runway heading to ARTUB, turn RIGHT to ANPET via AR401, climbing to 8000' to ANPET and hold.</b>					
Alt Set: IN (hPa on req)		Trans level: FL 190		Trans alt: 18000'	
RNAV 1		GNSS required.			
					MSA ARP 7000 Within 10 NM



DIST to RWY20	1.1	2.0	3.0	4.0	5.0
ALTITUDE	4370'	4652'	4968'	5284'	5600'



Gnd speed-Kts	70	90	100	120	140	160	PAPI-L	Rwy hdg	ARTUB
GS	3.00°	372	478	531	637	743			

STRAIGHT-IN LANDING RWY 20				CIRCLE-TO-LAND			
DA(H) <b>4170'</b> (201')				Max Kts   MDA(H)			
A				100	<b>4470'</b> (494') -2300m		
B	1200m			135	<b>4690'</b> (714') -3600m		
C				180	<b>4690'</b> (714') -3600m		
D	NOT APPLICABLE			D	NOT APPLICABLE		

PANS OPS

Not authorized East of Airport.

CHANGES: Chart format, topography.

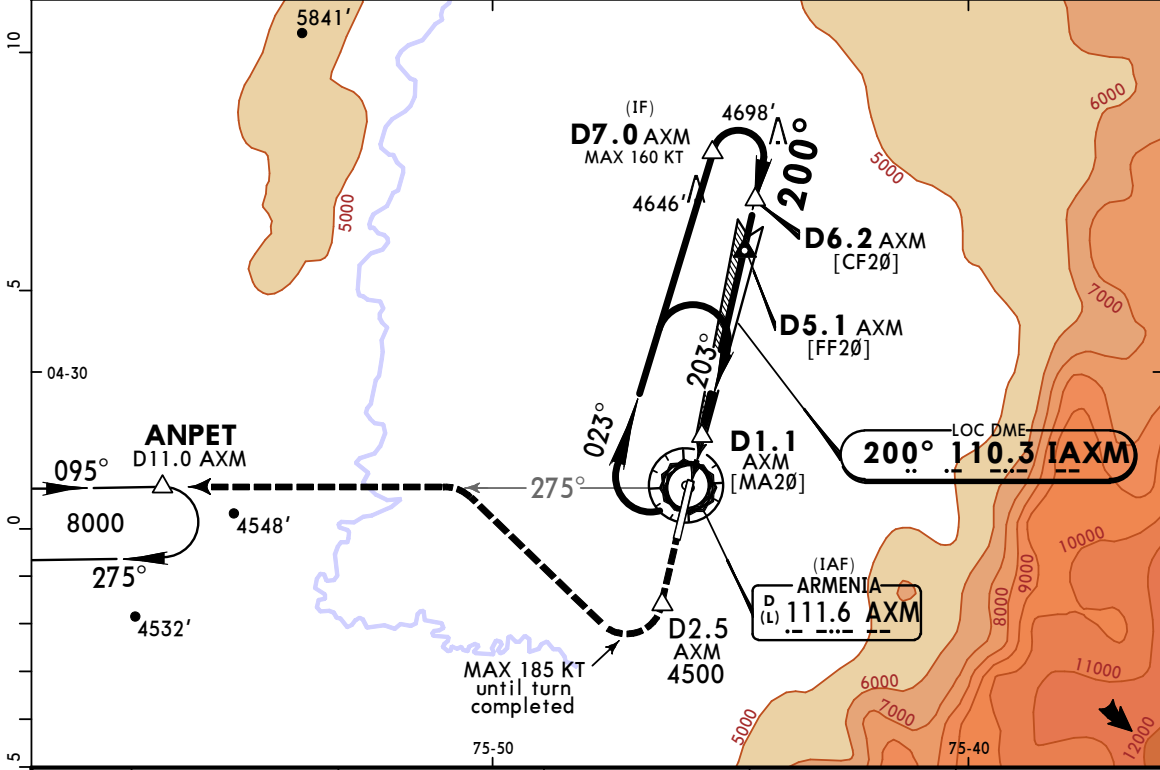
© JEPPESEN, 2017, 2021. ALL RIGHTS RESERVED.

SKAR/AXM  
EL EDEN

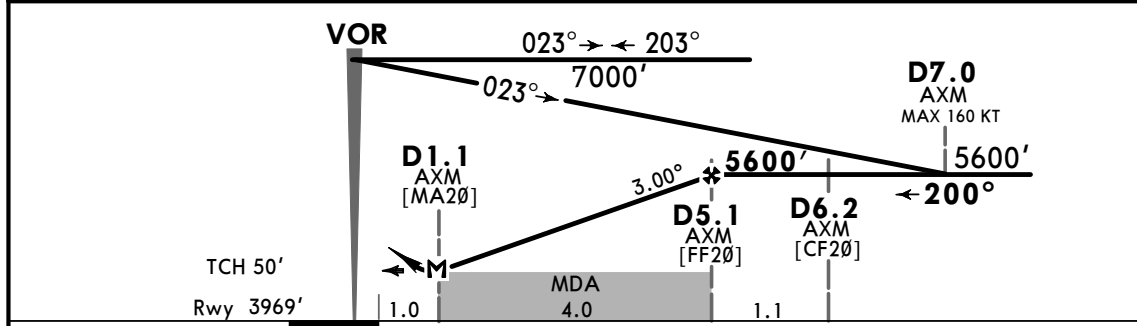
JEPPESEN  
1 OCT 21 (11-3)

ARMENIA, COLOMBIA  
CAT A, B & C LOC Rwy 20

*AWOS 127.65		*PEREIRA Approach 120.7		*EL EDEN Tower 118.5	
LOC IAXM <b>110.3</b>	Final Apch Crs <b>200°</b>	D5.1 AXM <b>5600'</b> (1631')	MDA(H) <b>4340'</b> (371')	Apt Elev 3976' Rwy 3969'	
<b>MISSED APCH:</b> Maintain runway heading to D2.5 AXM, turn RIGHT to intercept and follow AXM VOR R-275 to ANPET climbing to 8000' and hold.					
Alt Set: IN (hPa on req)		Trans level: FL 190		Trans alt: 18000'	
1. AXM DME required. 2. Simultaneous holding at the same altitude not authorized.					MSA AXM VOR ① 7000 Within 10 NM



AXM DME	1.1	2.0	3.0	4.0	5.0
ALTITUDE	4340'	4645'	4963'	5281'	5600'



Gnd speed-Kts	70	90	100	120	140	160	PAPI-L	Rwy hdg	D2.5 AXM
Descent Angle	3.00°	372	478	531	637	743			
MAP at D1.1 AXM									

STRAIGHT-IN LANDING RWY 20 MDA(H) <b>4340'</b> (371')					CIRCLE-TO-LAND				
A	1900m				Max Kts	MDA(H)			
B					100	<b>4470'</b> (494') -2300m			
C	2100m				135	<b>4690'</b> (714') -3600m			
D	NOT APPLICABLE				180	<b>① 4690'</b> (714') -3600m			
D	NOT APPLICABLE				D	NOT APPLICABLE			

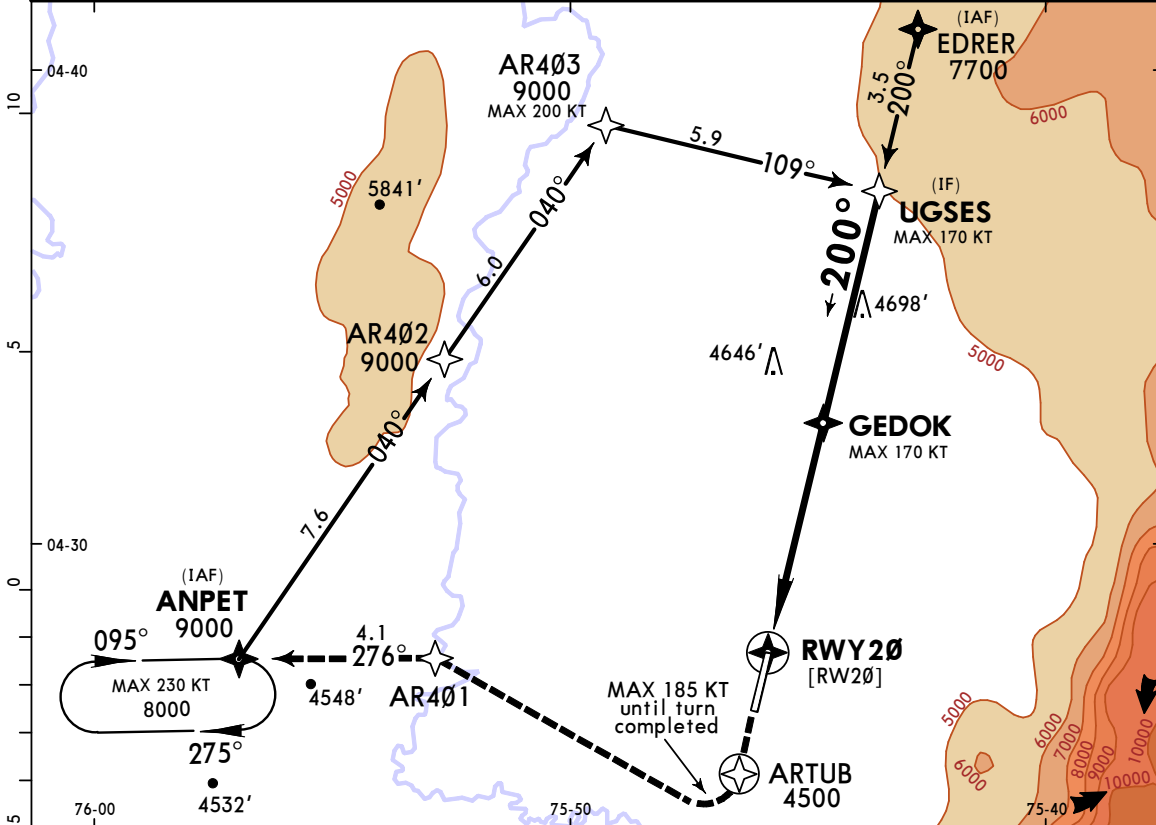
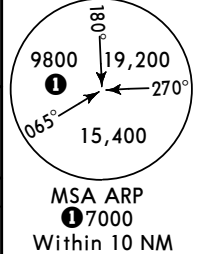
PANS OPS

① Not authorized East of Airport.

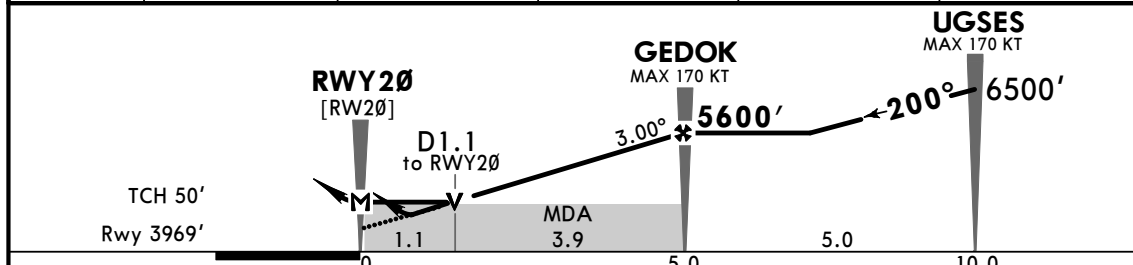
CHANGES: Chart format, topography.

© JEPPESEN, 2016, 2021. ALL RIGHTS RESERVED.

*AWOS 127.65		*PEREIRA Approach 120.7		*EL EDEN Tower 118.5	
RNAV	Final Apch Crs <b>200°</b>	GEDOK <b>5600'</b> (1631')	LNAV/VNAV DA(H) <b>4250'</b> (281')	Apt Elev 3976'	Rwy 3969'
<b>MISSED APCH: Maintain runway heading to ARTUB, turn RIGHT to ANPET via AR401, climbing to 8000' to ANPET and hold.</b>					
RNP Apch	Alt Set: IN (hPa on req)	Trans level: FL 190	Trans alt: 18000'		
For uncompensated Baro-VNAV systems, LNAV/VNAV not authorized below 10°C or above 41°C.					



DIST to RWY20	1.1	2.0	3.0	4.0	5.0
ALTITUDE	4370'	4652'	4968'	5284'	5600'



Gnd speed-Kts	70	90	100	120	140	160	PAPI-L	Rwy hdg	ARTUB	
Descent Angle	3.00°	372	478	531	637	743				849
MAP at RWY20	5.0	4:17	3:20	3:00	2:30	2:09				1:53
FAF to MAP										

STRAIGHT-IN LANDING RWY 20			CIRCLE-TO-LAND		
LNAV/VNAV			LNAV		
DA(H) <b>4250'</b> (281')			MDA(H) <b>4370'</b> (401')		
A					Max Kts
B	1400m		2100m		100
C			2300m		135
D	NOT APPLICABLE		NOT APPLICABLE		180
					1
					Not authorized East of Airport
					MDA(H)
					<b>4470'</b> (494') -2300m
					<b>4690'</b> (714') -3600m
					<b>4690'</b> (714') -3600m
					NOT APPLICABLE

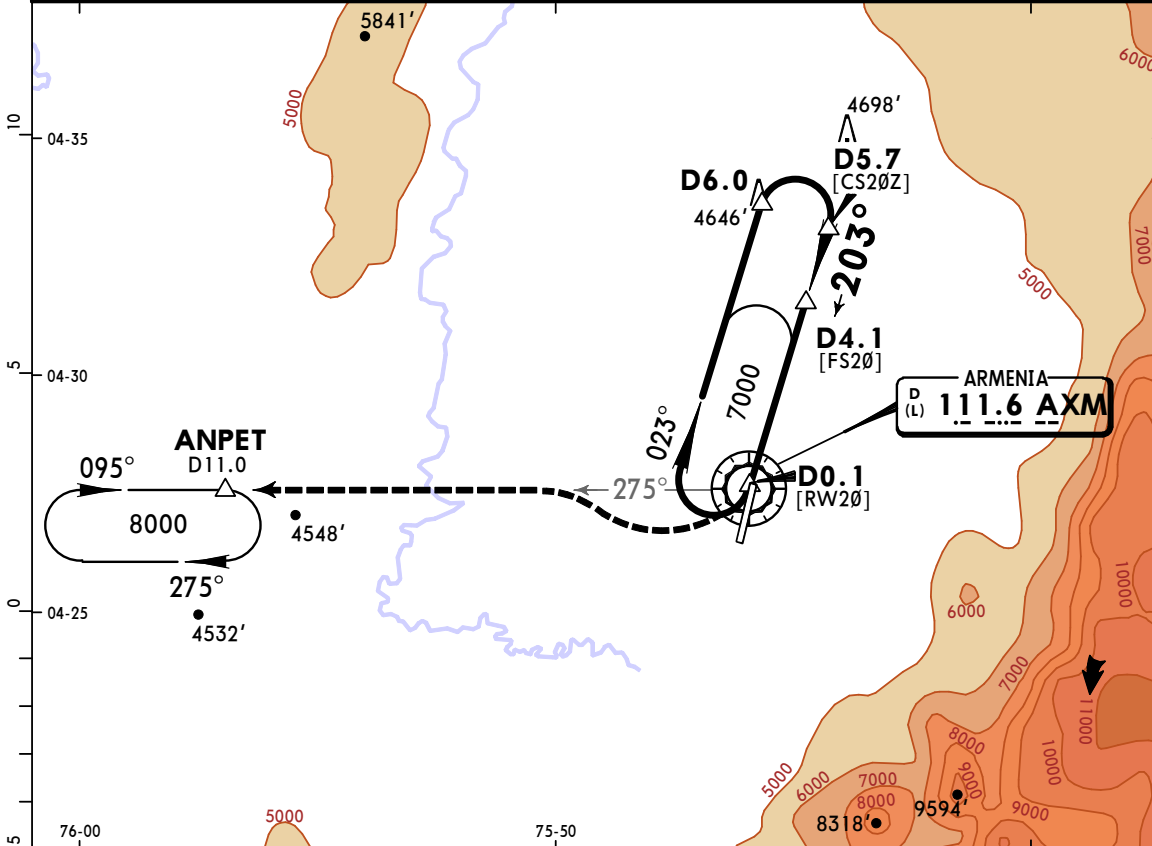
PANS OPS

SKAR/AXM  
EL EDEN

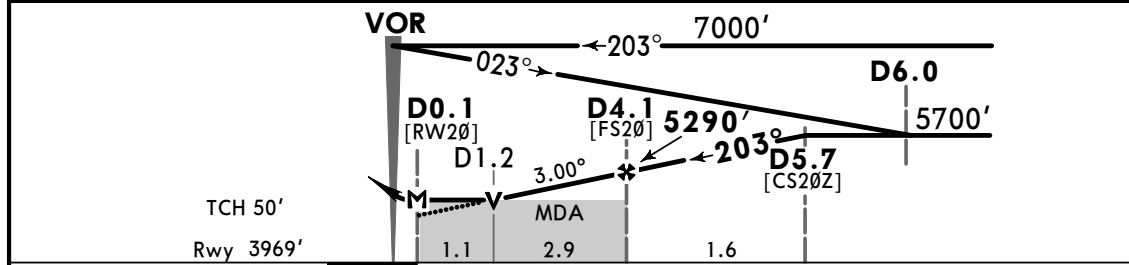
JEPPESEN  
1 OCT 21 (13-1)

ARMENIA, COLOMBIA  
CAT A, B & C VOR Z Rwy 20

*AWOS 127.65		*PEREIRA Approach 120.7		*EL EDEN Tower 118.5	
VOR AXM <b>111.6</b>	Final Apch Crs <b>203°</b>	D4.1 <b>5290'</b> (1321')	MDA(H) <b>4420'</b> (451')	Apt Elev 3976'	
<b>MISSED APCH:</b> Upon crossing AXM VOR, turn RIGHT to intercept AXM VOR R-275, climb outbound to 8000' to ANPET and hold.					
Alt Set: IN (hPa on req)		Trans level: FL 190		Trans alt: 18000'	
DME required.		MSA AXM VOR 7000 Within 10 NM			



AXM DME	1.2	2.0	3.0	4.0	5.0
ALTITUDE	4420'	4673'	4988'	5303'	5618'



Gnd speed-Kts	70	90	100	120	140	160	PAPI-L	↑	AXM <b>8000'</b> AXM	111.6 then RT via 111.6 R-275	
Descent Angle	3.00°	372	478	531	637	743					849
MAP at D0.1	4.0	3:26	2:40	2:24	2:00	1:43					1:30

STRAIGHT-IN LANDING RWY 20				CIRCLE-TO-LAND			
MDA(H) <b>4420'</b> (451')				Max Kts			
A	2300m			100	MDA(H) <b>4470'</b> (494') -2300m		
B	2500m			135	<b>4690'</b> (714') -3600m		
C	2500m			180	<b>4690'</b> (714') -3600m		
D	NOT APPLICABLE			D	NOT APPLICABLE		

PANS OPS

Not authorized East of Airport.

CHANGES: Chart format, topography.

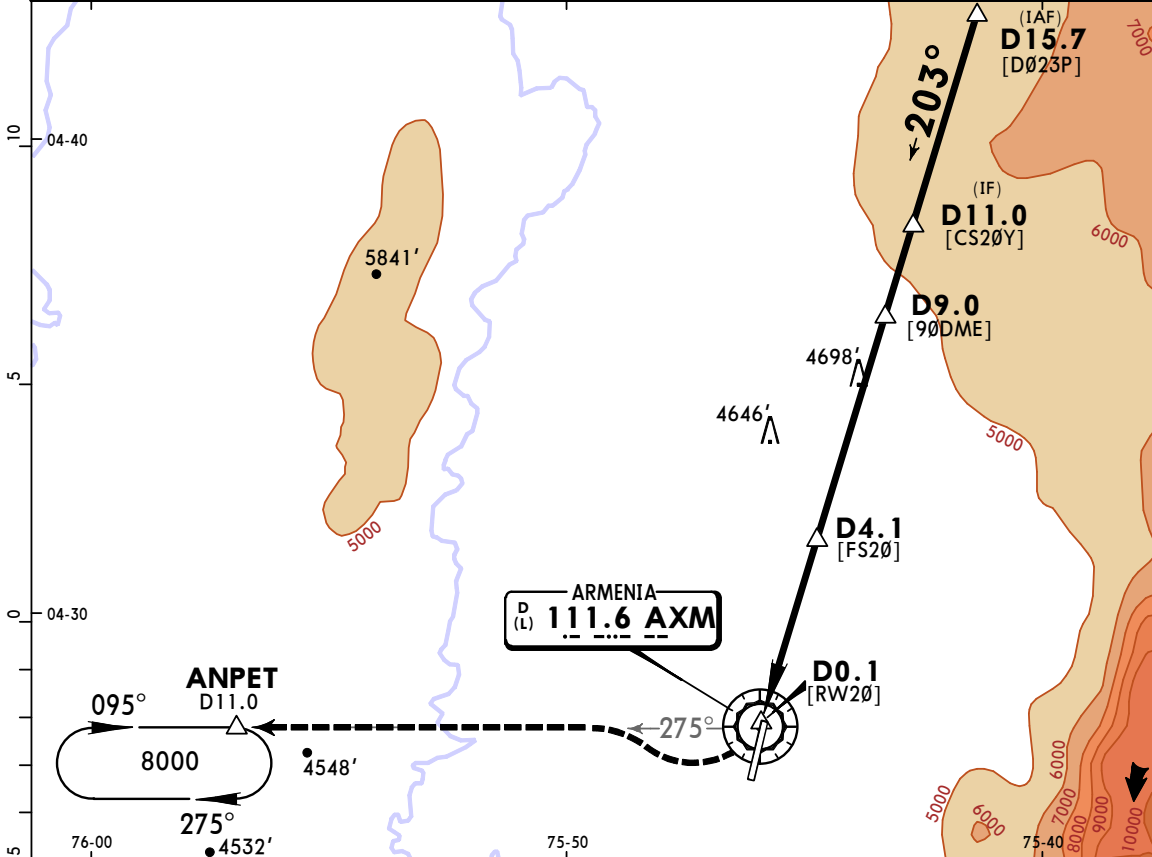
© JEPPESEN, 2011, 2021. ALL RIGHTS RESERVED.

SKAR/AXM  
EL EDEN

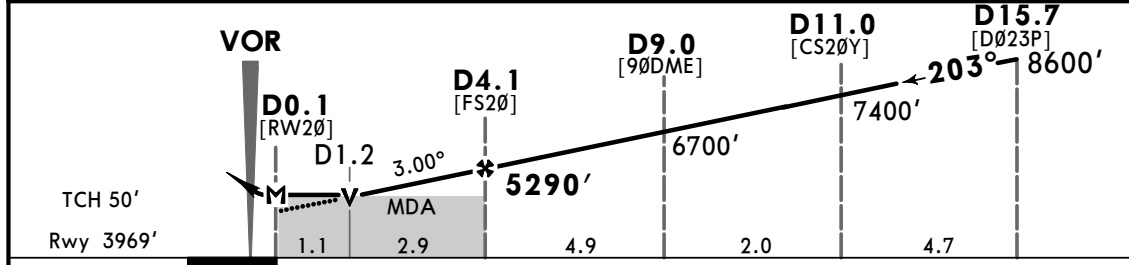
JEPPESEN  
1 OCT 21 (13-2)

ARMENIA, COLOMBIA  
CAT A, B & C VOR Y Rwy 20

*AWOS 127.65		*PEREIRA Approach 120.7			*EL EDEN Tower 118.5	
VOR AXM <b>111.6</b>	Final Apch Crs <b>203°</b>	D4.1 <b>5290'</b> (1321')	MDA(H) <b>4420'</b> (451')	Apt Elev 3976' Rwy 3969'		
<b>MISSED APCH:</b> Upon crossing AXM VOR, turn RIGHT to intercept AXM VOR R-275, climb outbound to 8000' to ANPET and hold.						
Alt Set: IN (hPa on req)		Trans level: FL 190		Trans alt: 18000'		MSA AXM VOR 17000 Within 10 NM
DME required.						



AXM DME	1.2	2.0	3.0	4.0	5.0
ALTITUDE	4420'	4673'	4988'	5303'	5618'



Gnd speed-Kts	70	90	100	120	140	160	PAPI-L	↑	AXM <b>8000'</b> AXM		
Descent Angle	3.00°	372	478	531	637	743				849	111.6 then RT via 111.6 R-275
MAP at D0.1	4.0	3:26	2:40	2:24	2:00	1:43				1:30	
FAF to MAP	4.0	3:26	2:40	2:24	2:00	1:43	1:30				

STRAIGHT-IN LANDING RWY 20		CIRCLE-TO-LAND	
MDA(H) <b>4420'</b> (451')		Max Kts	MDA(H)
A	2300m	100	<b>4470'</b> (494') -2300m
B	2500m	135	<b>4690'</b> (714') -3600m
C	2500m	180	<b>4690'</b> (714') -3600m
D	NOT APPLICABLE	D	NOT APPLICABLE

PANS OPS

1 Not authorized East of Airport.

CHANGES: Chart format, topography.

© JEPPESEN, 2008, 2021. ALL RIGHTS RESERVED.