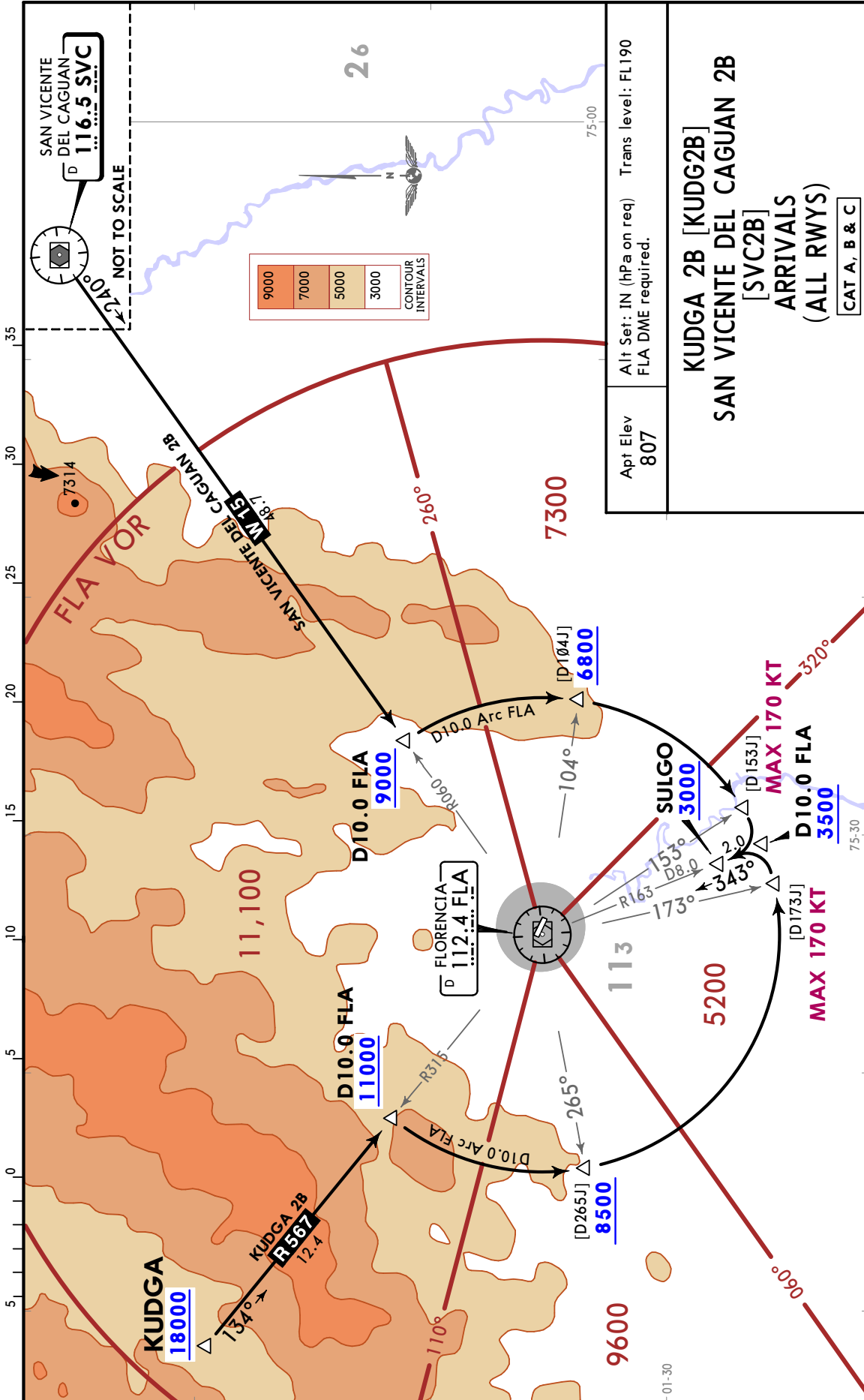


Alt Set: IN (hPa on req)  
FLA DME required.

Apt Elev  
807

Trans level: FL190

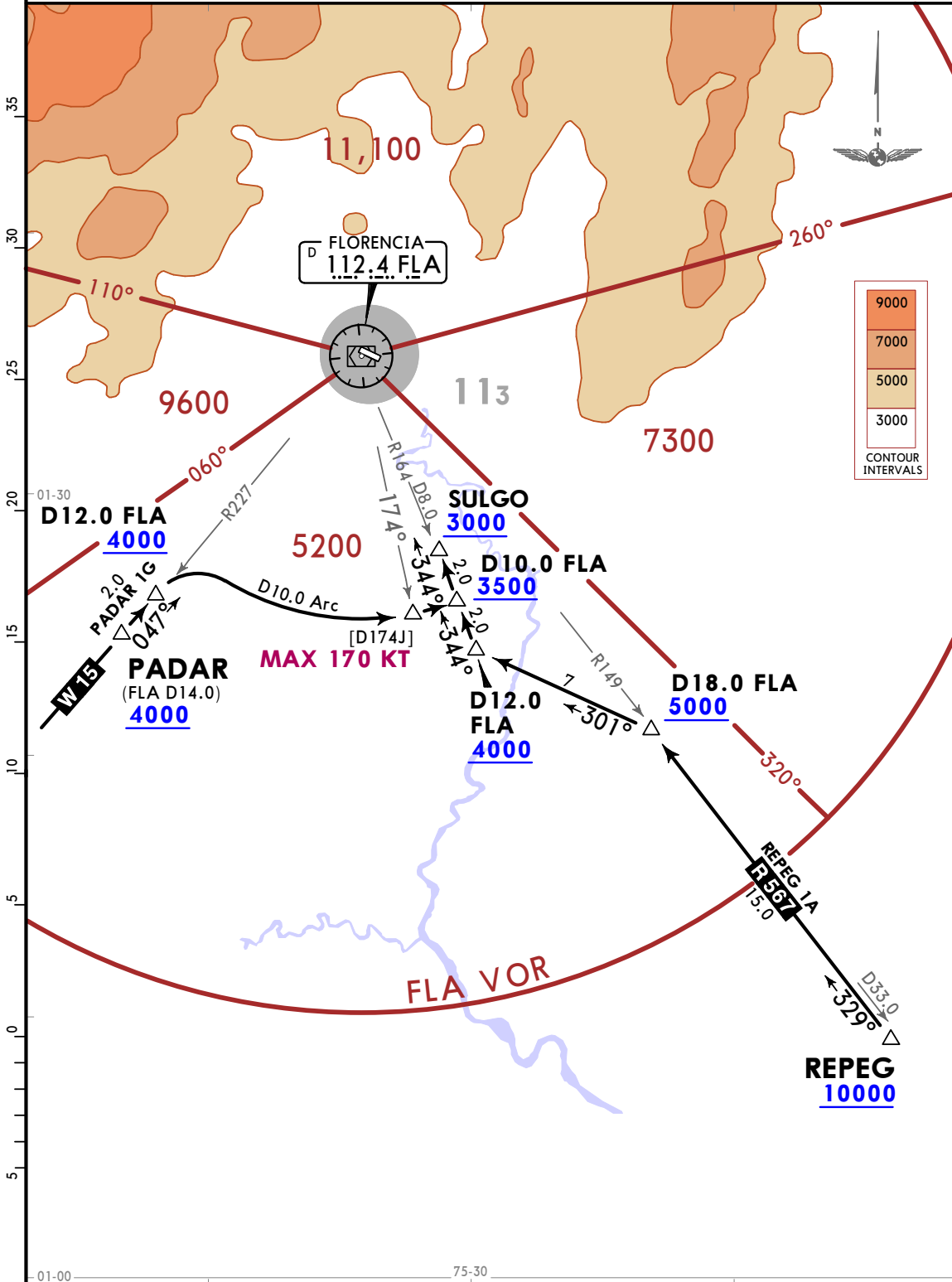
GAXAP 1F [GAXA1F]  
GEBUT 2A [GEBU2A]  
KUDGA 2A [KUDG2A]  
SAN VICENTE DEL CAGUAN 2A [SVC2A]  
ARRIVALS  
(ALL RWYS)  
CAT A, B & C



Apt Elev  
807

Alt Set: IN (hPa on req) Trans level: FL190  
FLA VOR required.

PADAR 1G [PADA1G]  
REPEG 1A [REPE1A]  
ARRIVALS  
(ALL RWYS)  
CAT A, B & C

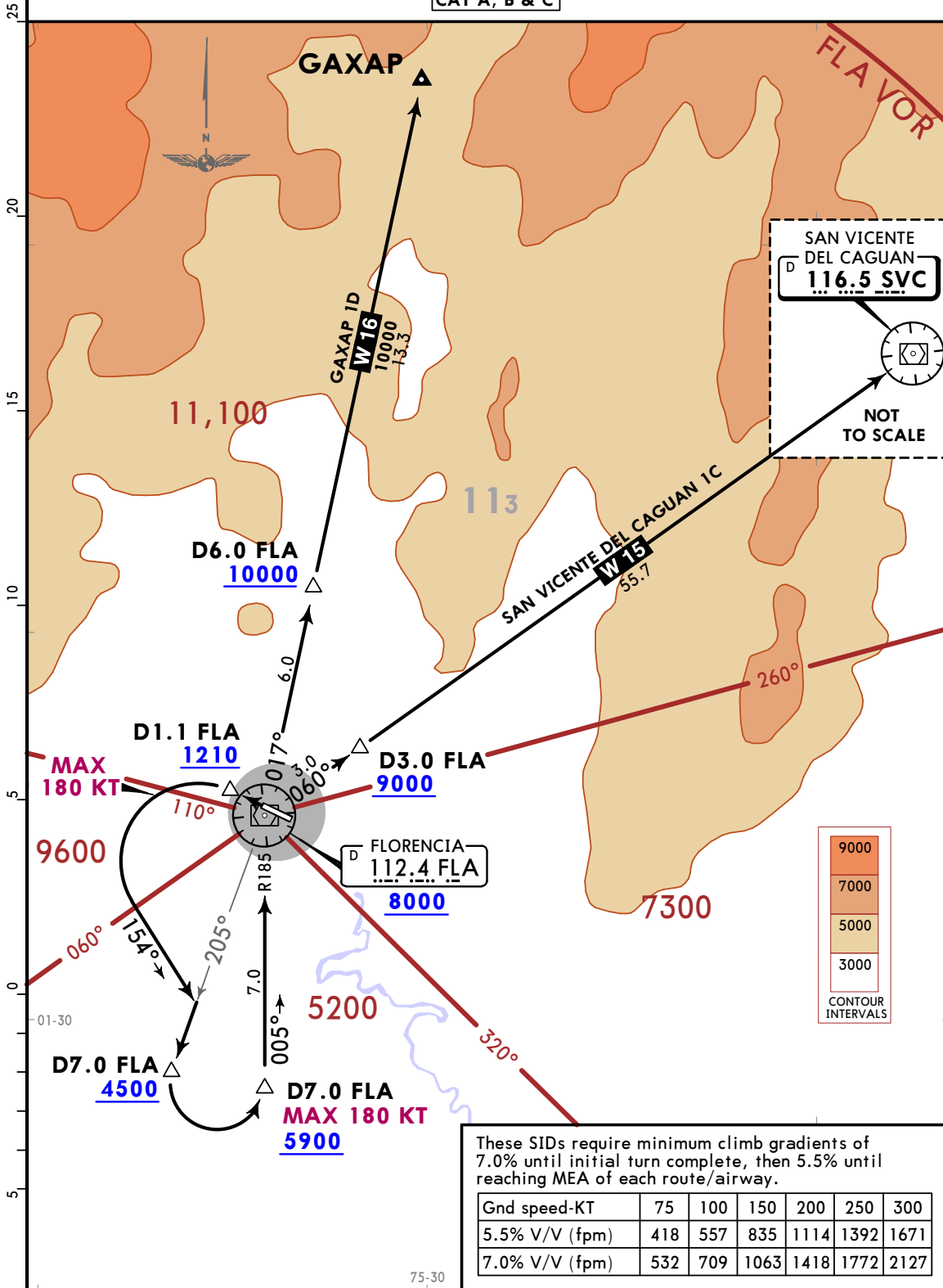


Apt Elev  
807

Trans alt: 18000  
FLA DME required.

GAXAP 1D [GAXA1D]  
SAN VICENTE DEL CAGUAN 1C [SVC1C]  
DEPARTURES  
(RWY 30)

CAT A, B & C



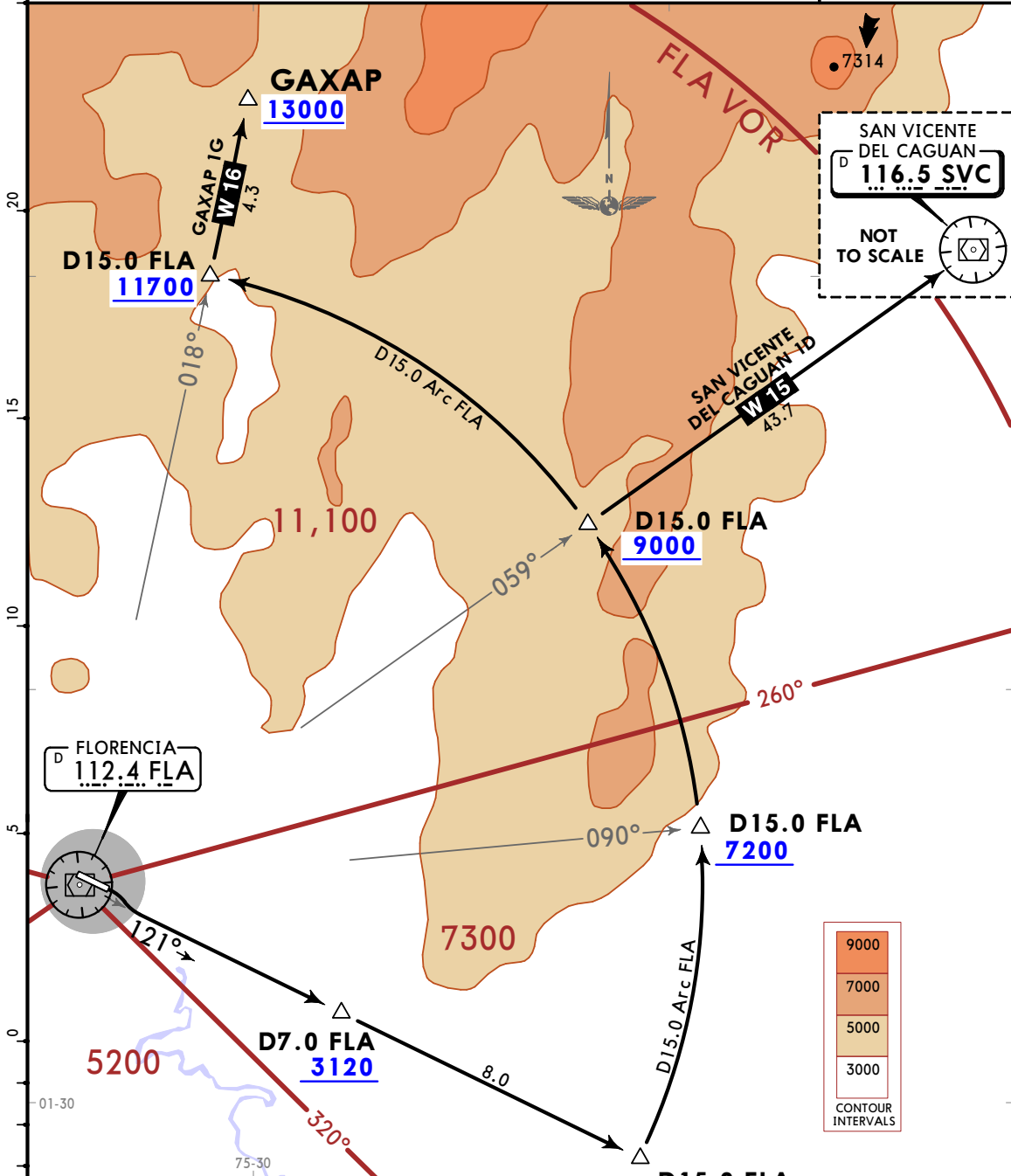
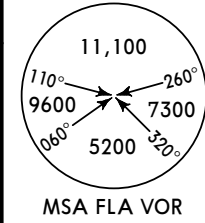
These SIDs require minimum climb gradients of 7.0% until initial turn complete, then 5.5% until reaching MEA of each route/airway.

Gnd speed-KT	75	100	150	200	250	300
5.5% V/V (fpm)	418	557	835	1114	1392	1671
7.0% V/V (fpm)	532	709	1063	1418	1772	2127

Apt Elev  
807

Trans alt: 18000  
FLA VOR/DME required.

**GAXAP 1G [GAXA1G]**  
**SAN VICENTE DEL CAGUAN 1D [SVC1D]**  
**DEPARTURES**  
**(RWY 12)**  
CAT A, B & C



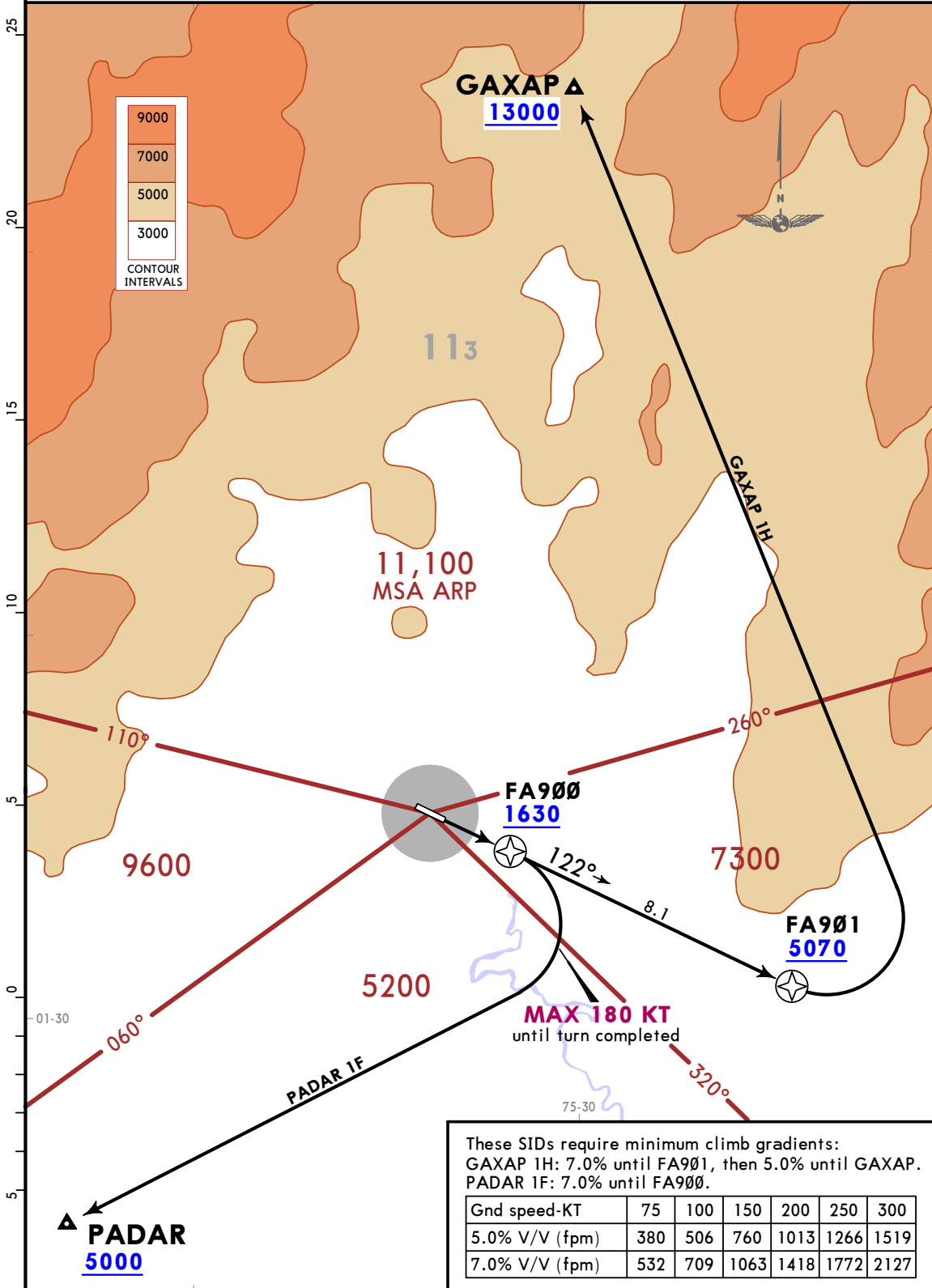
These SIDs require minimum climb gradients of 6.0% until reaching 6000, then 4.0% to the MEA of each route.

Gnd speed-KT	75	100	150	200	250	300
4.0% V/V (fpm)	304	405	608	810	1013	1215
6.0% V/V (fpm)	456	608	911	1215	1519	1823

Apt Elev  
807

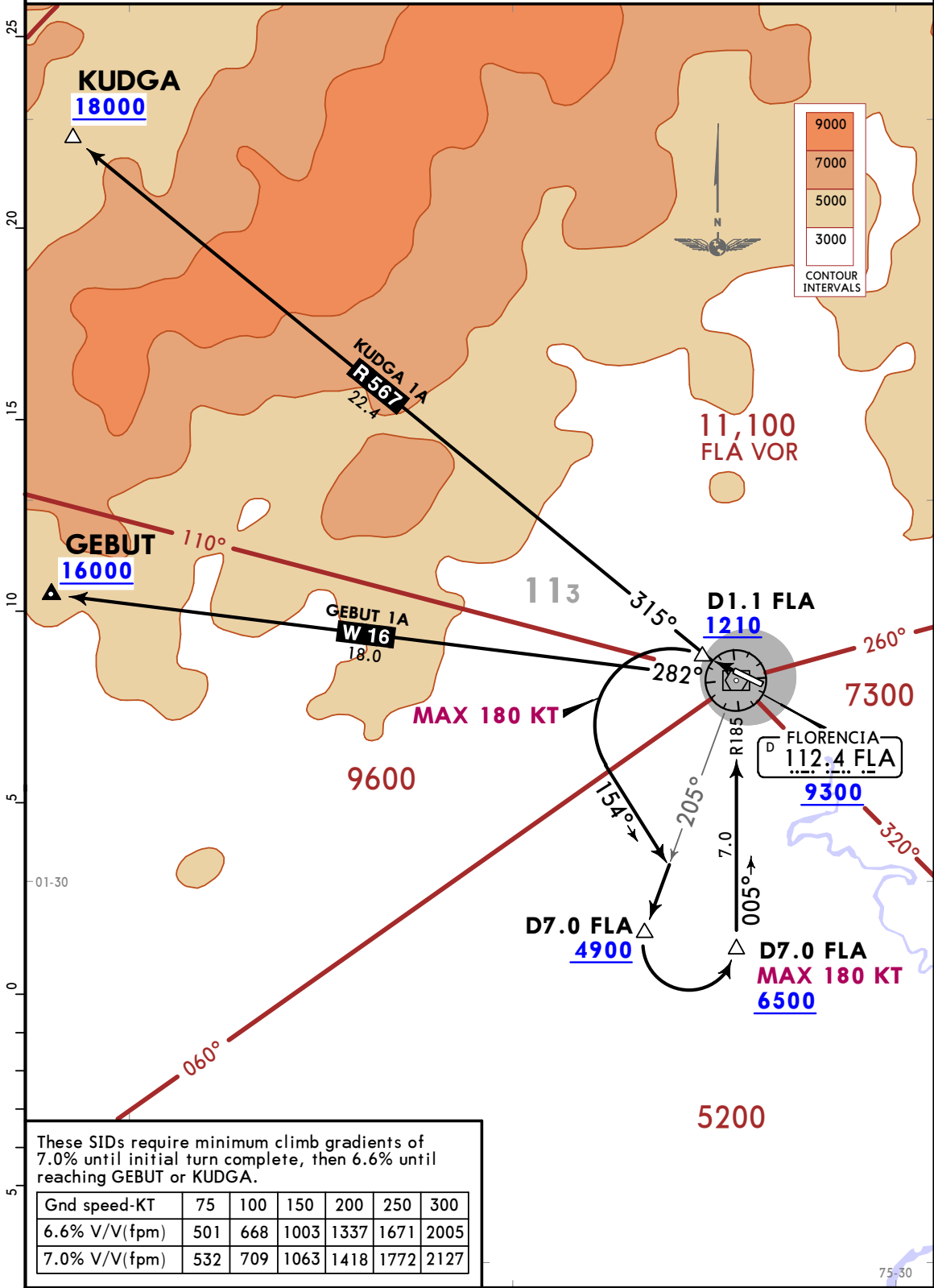
Trans alt: 18000  
1. RNAV 1.  
2. GNSS required.

GAXAP 1H [GAXA1H], PADAR 1F [PADA1F]  
RNAV (GNSS) DEPARTURES  
(RWY 12)  
CAT A, B & C



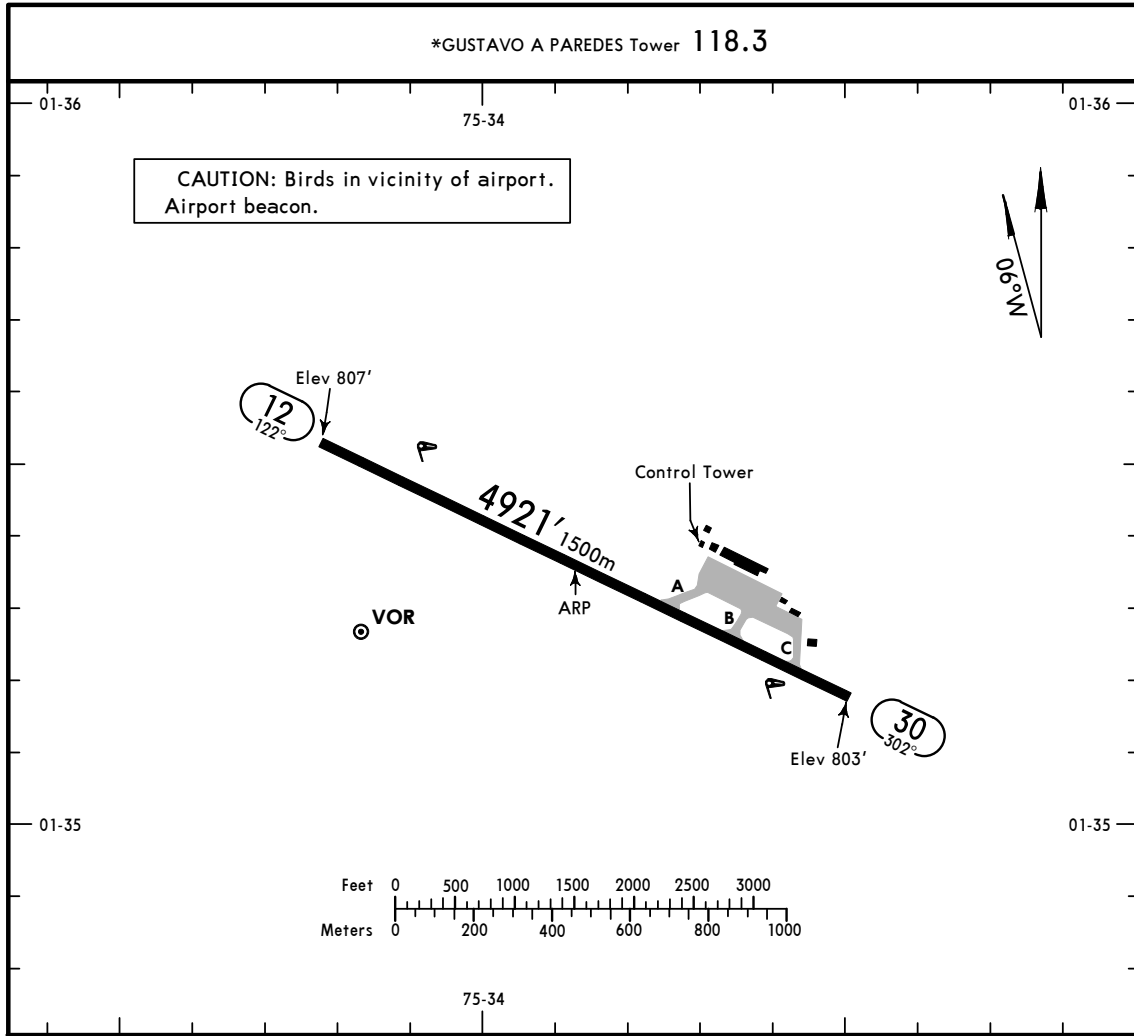
Apt Elev 807  
Trans alt: 18000  
FLA DME required.

GEBUT 1A [GEBU1A], KUDGA 1A [KUDG1A]  
DEPARTURES  
(RWY 30)  
CAT A, B & C



CHANGES: New format.

\*GUSTAVO A PAREDES Tower 118.3



ADDITIONAL RUNWAY INFORMATION

RWY	USABLE LENGTHS	LANDING BEYOND	TAKE-OFF	WIDTH
12 30	RL PAPI-L (3.00°)			98' 30m

TAKE-OFF

All Rwys	
RL & CL or RCLM	Standard
1 Eng	600' - 3000m
2 Eng	1 hour Take-off Alternate Airport Filed (1 Eng inop) 500m
3 & 4 Eng	2 hour Take-off Alternate Airport Filed (1 Eng inop) 500m

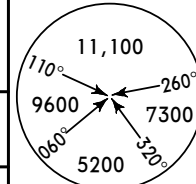
**1** Lower than standard take-off minimums available only with prior appropriate approvals and approved instrument departure for one engine inop after V1.



\*GUSTAVO A PAREDES Tower 118.3

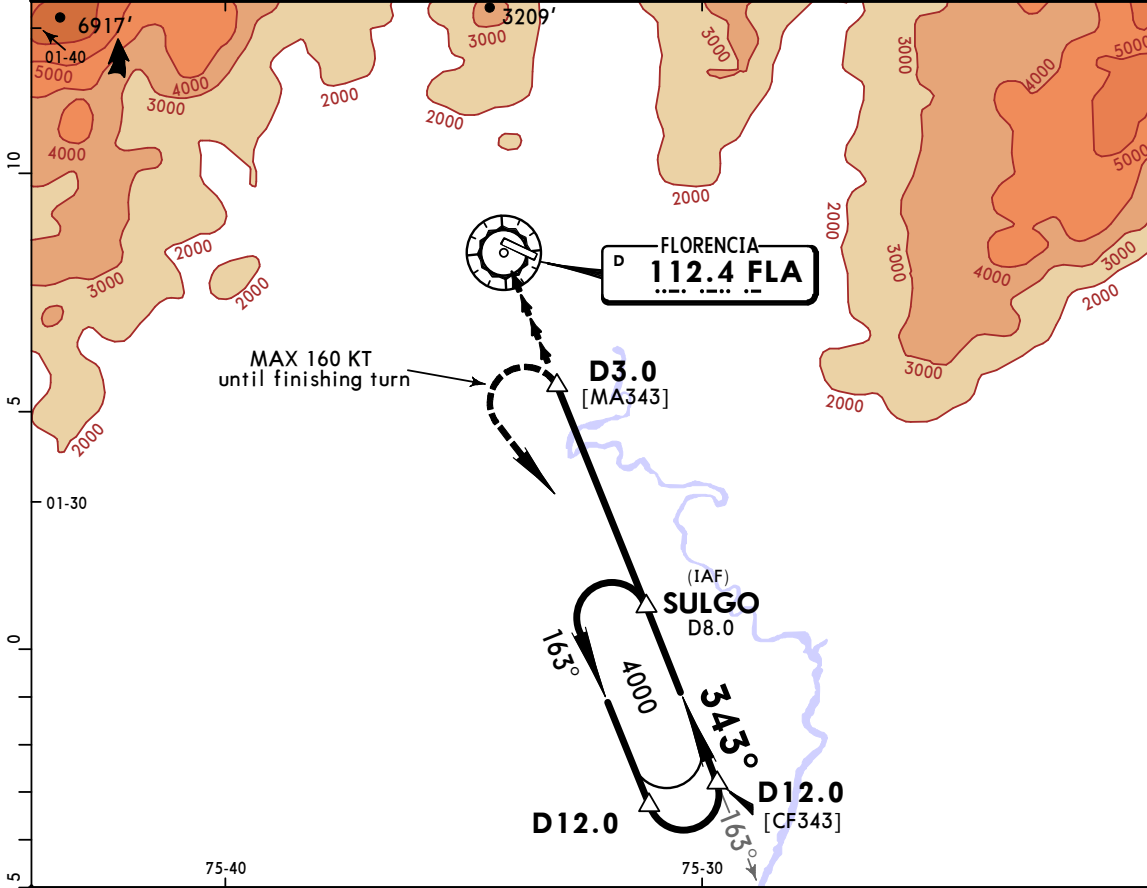
BRIEFING STRIP™

VOR FLA <b>112.4</b>	Final Apch Crs <b>343°</b>	Minimum Alt SULGO <b>3000'</b> (2192')	MDA(H) Refer to Minimums	Apt Elev 807'
----------------------------	----------------------------------	--	--------------------------------	---------------

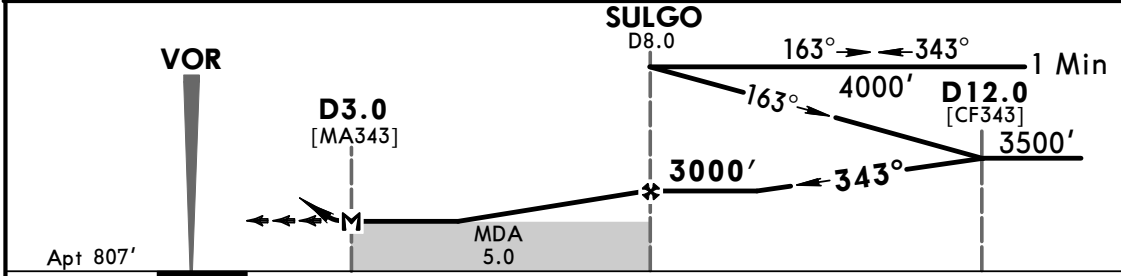


**MISSED APCH:** Climbing LEFT turn (MAX 160 KT until end of turn) to 4000' to SULGO and hold.

Alt Set: IN (hPa on req) Trans level: FL 190 Trans alt: 18000'  
**1. DME required.**



FLA DME	4.0	5.0	6.0	7.0	8.0
ALTITUDE	1730'	2050'	2370'	2680'	3000'



Gnd speed-Kts	70	90	100	120	140	160	Lighting - Refer to Airport Chart	4000' LT	SULGO
MAP at D3.0 or SULGO to MAP	5.0	4:17	3:20	3:00	2:30	2:09			

PANS OPS		CIRCLE-TO-LAND	
		Not Authorized North of Airport	
		MDA(H)	
A	100	1410' (603') - 2800m	
B	135	1410' (603') - 4000m	
C	180	NOT APPLICABLE	
D		NOT APPLICABLE	