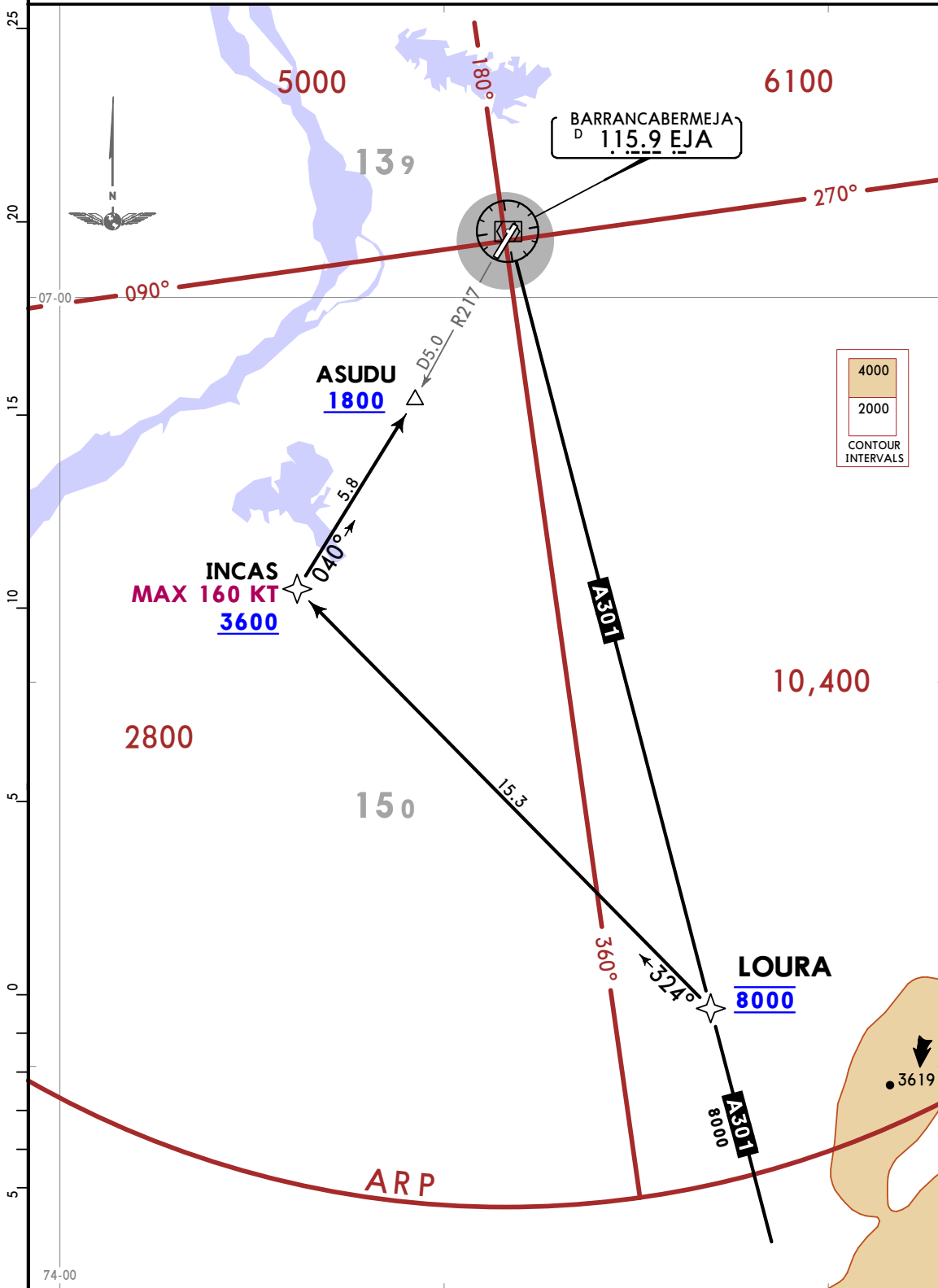


Apt Elev  
397

Alt Set: IN (hPa on req) Trans level: FL190  
1. GNSS required. 2. RNP 1 or RNAV 1.  
3. For VOR Z Rwy 04 approach.

LOURA 1A RNAV (GNSS) ARRIVAL  
[LOUR1A]  
(RWY 04)

CAT A, B & C



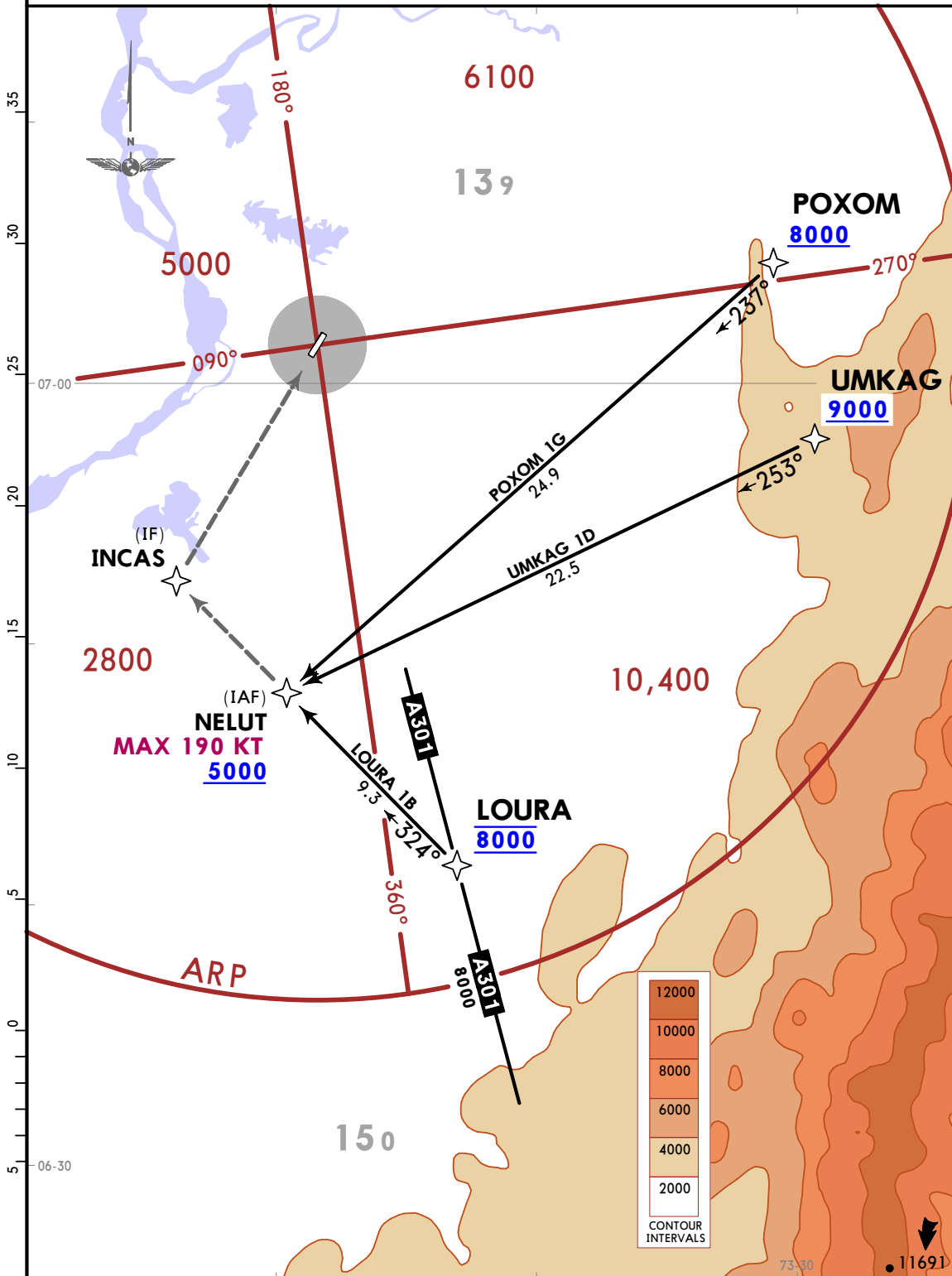
74-00

Apt Elev  
397

Alt Set: IN (hPa on req) Trans level: FL190  
1. RNP 1 or RNAV 1.  
2. GNSS required.

LOURA 1B [LOUR1B], POXOM 1G [POX01G]  
UMKAG 1D [UMKA1D]  
RNAV (GNSS) ARRIVALS  
(RWY 04)

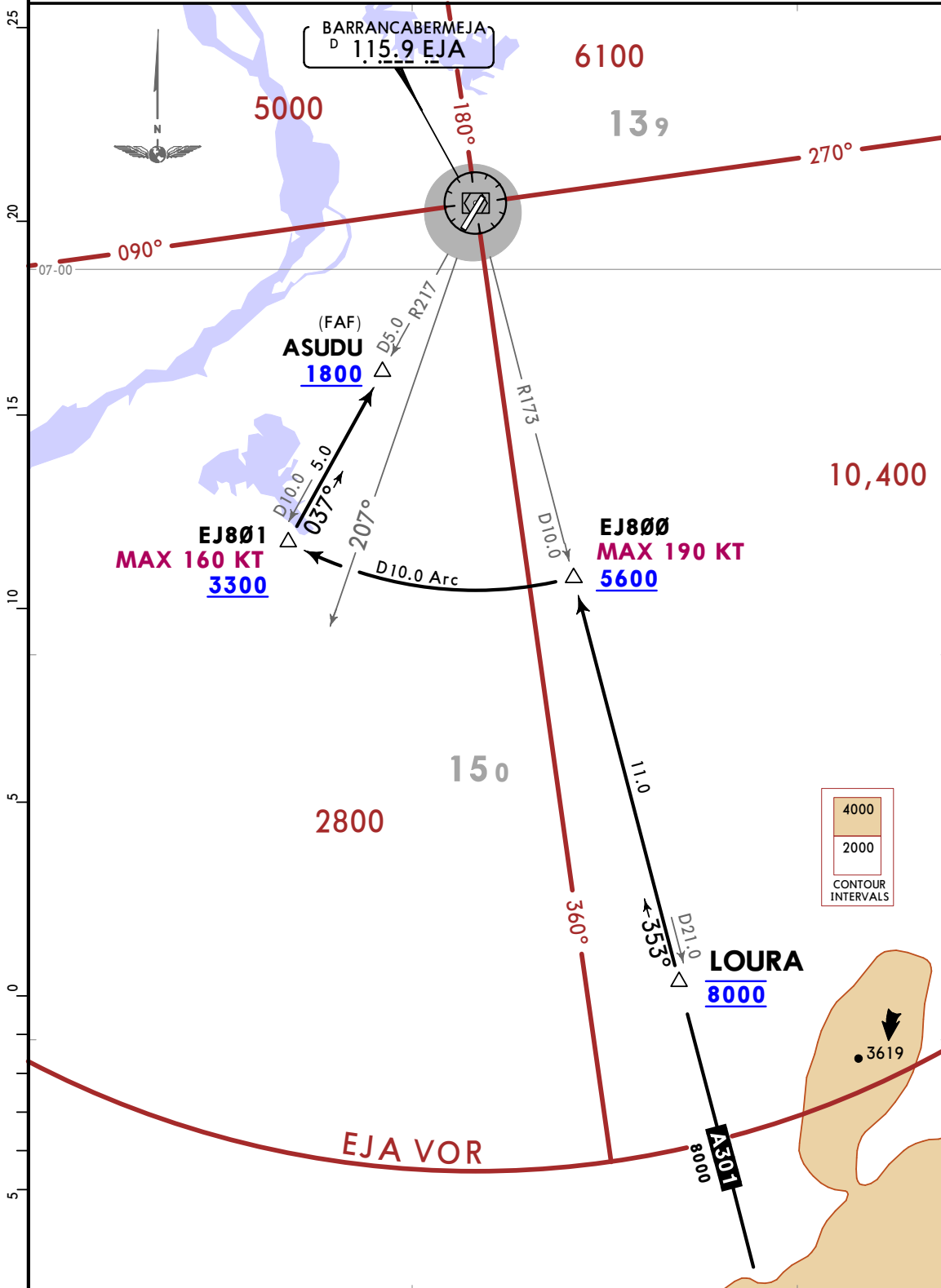
CAT A, B & C



Apt Elev  
**397**

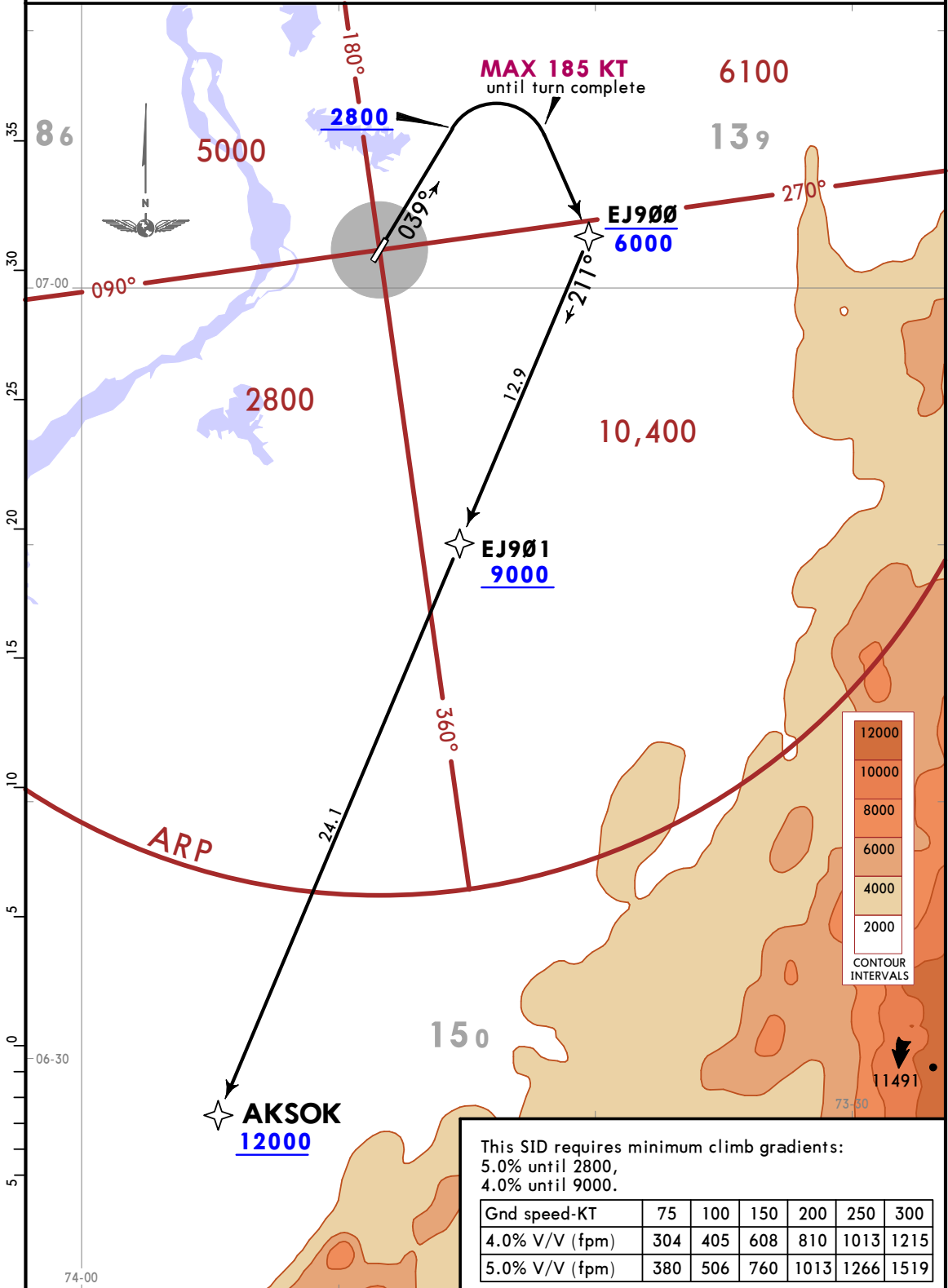
Alt Set: IN (hPa on req) Trans level: FL190  
EJA DME or GNSS required.

**LOURA 1C ARRIVAL**  
[LOUR1C]  
(RWY 04)  
CAT A, B & C



Apt Elev **397** Trans alt: 18000  
1. RNP 1 or RNAV 1.  
2. GNSS required.

**AKSOK 1A RNAV (GNSS) DEPARTURE**  
[AKS01A]  
(RWY 04)  
CAT A, B & C



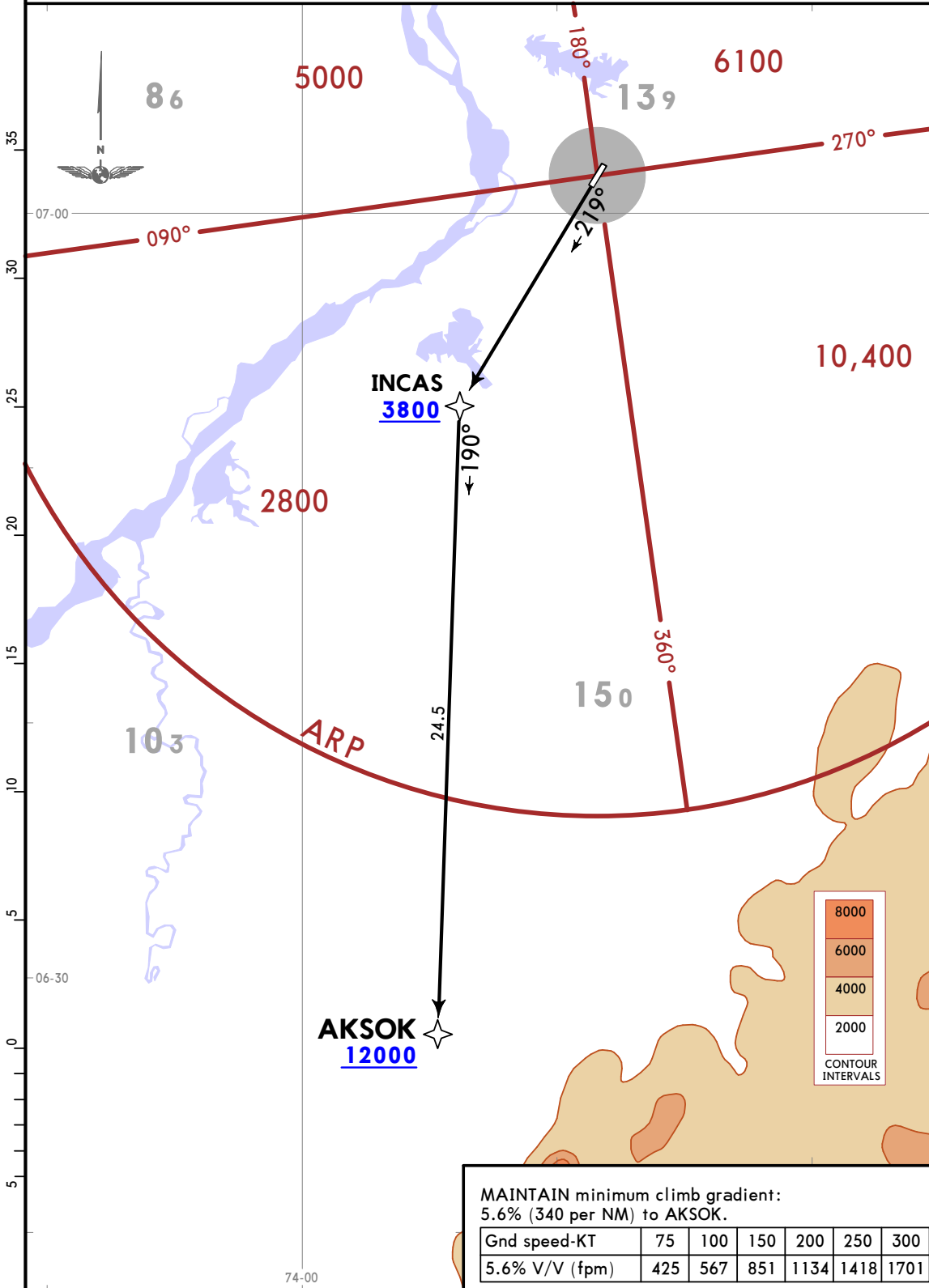
Apt Elev  
**397**

Trans alt: 18000  
1. RNP 1 or RNAV 1.  
2. GNSS required.

**AKSOK 1B RNAV (GNSS) DEPARTURE**

[AKSO1B]  
(RWY 22)

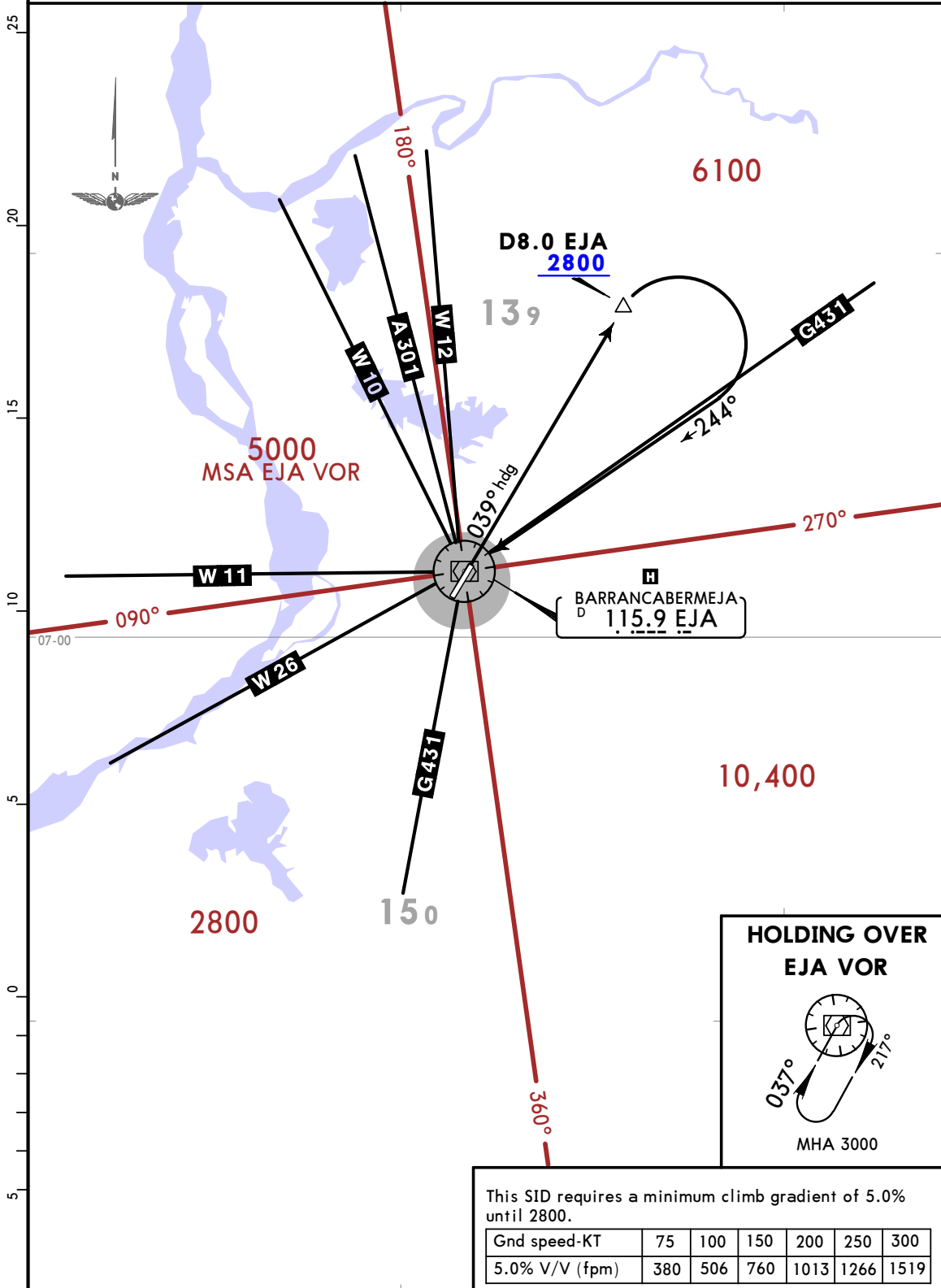
CAT A, B & C

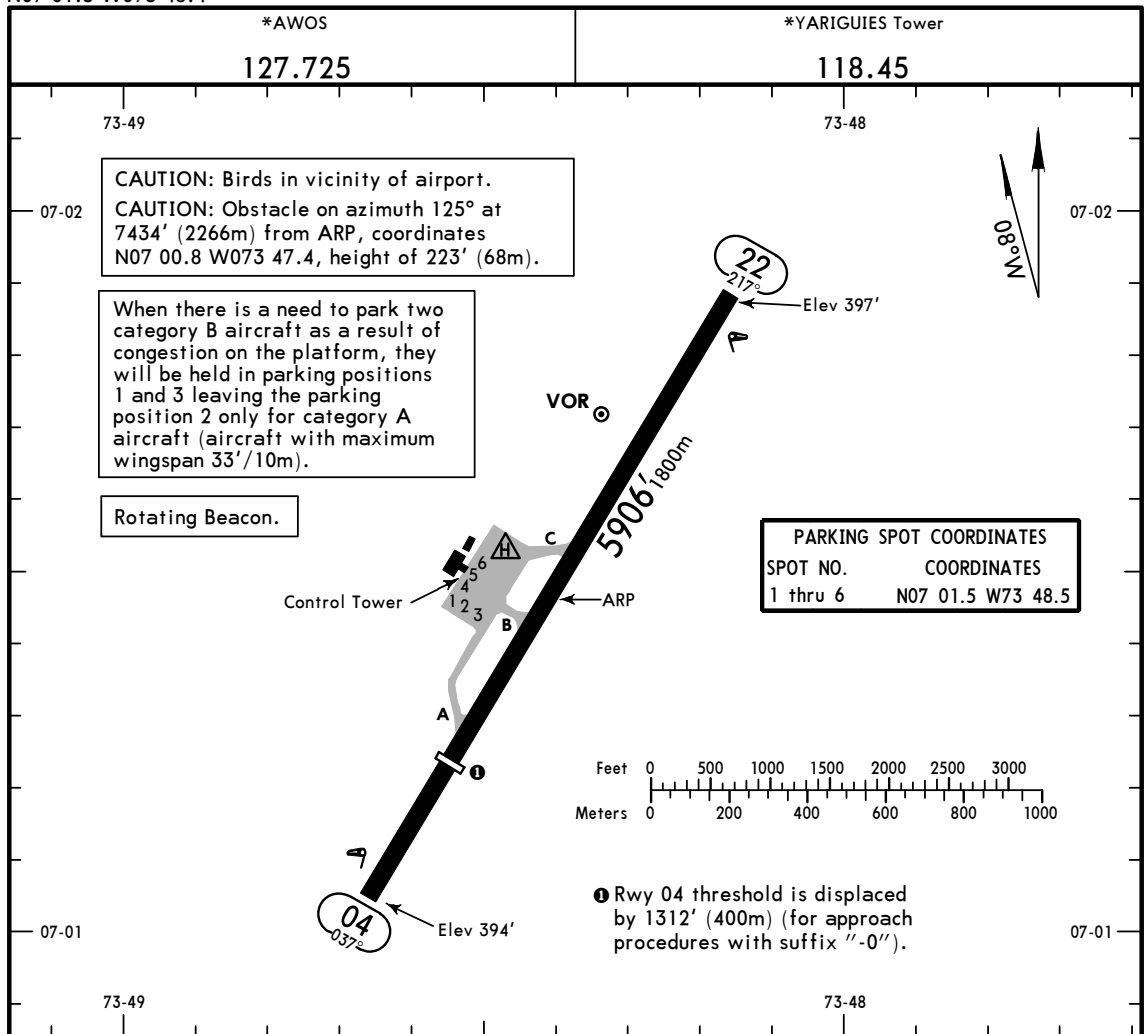


Apt Elev 397 Trans alt: 18000

**BARRANCA 1A DEPARTURE  
(BARRA1A) [BARA1A]  
(RWY 04)**

CAT A, B & C





ADDITIONAL RUNWAY INFORMATION

RWY		USABLE LENGTHS			WIDTH
		Threshold	Glide Slope	TAKE-OFF	
04	MIRL PAPI-L (angle 3.0°)				148'
22	MIRL				45m

TAKE-OFF

All Rwys

① ② Take-off Alternate Airport Filed  
 RL & CL or RCLM

STD

1 Eng	500' - 3000m	
2 Eng	1 hour alternate (1 Eng inop) 500m	1600m
3 & 4 Eng	2 hour alternate (1 Eng inop) 500m	800m

① With appropriate approval.

② SID required.

SKEJ/EJA  
YARIGUIES

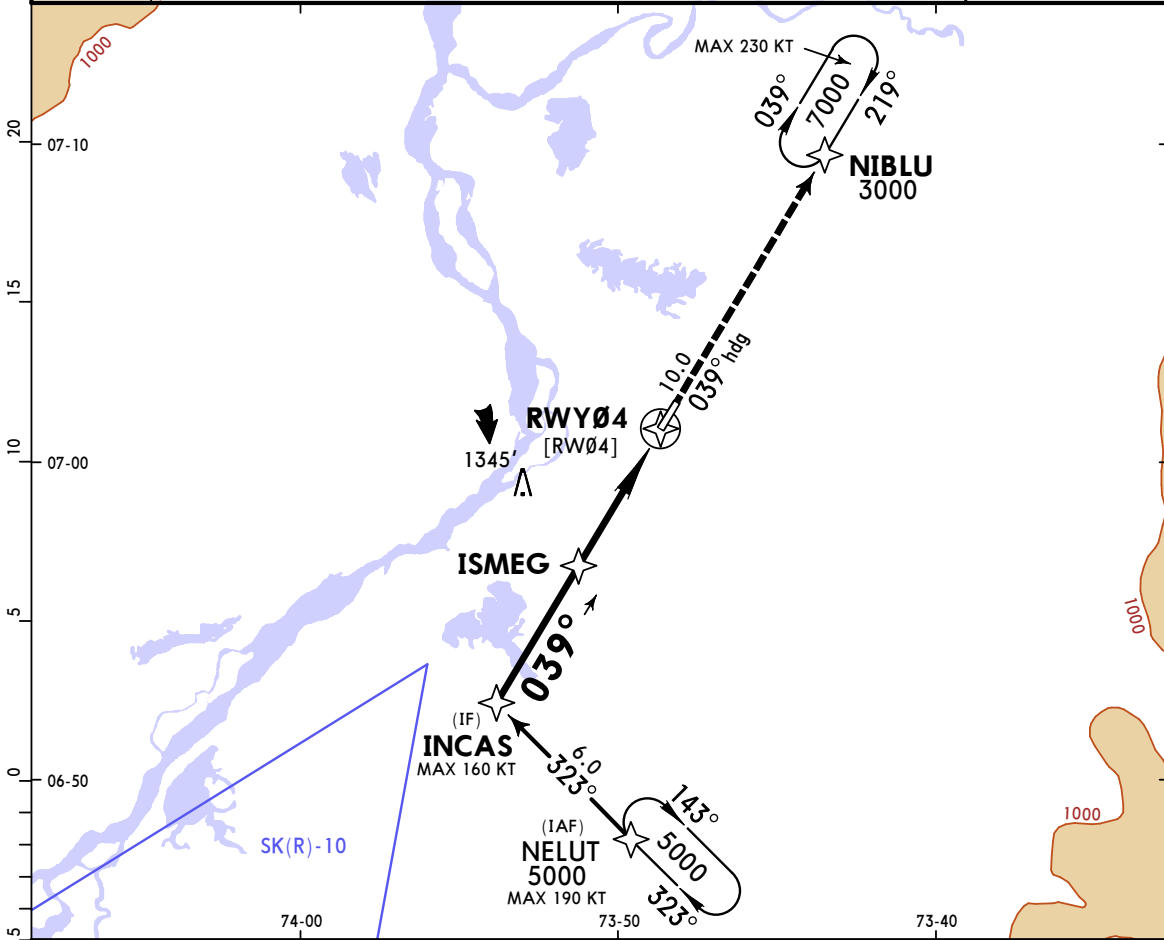
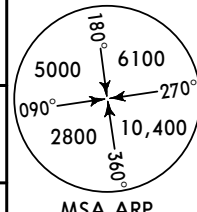
24 JAN 20  
Eff 30 Jan

(12-1)

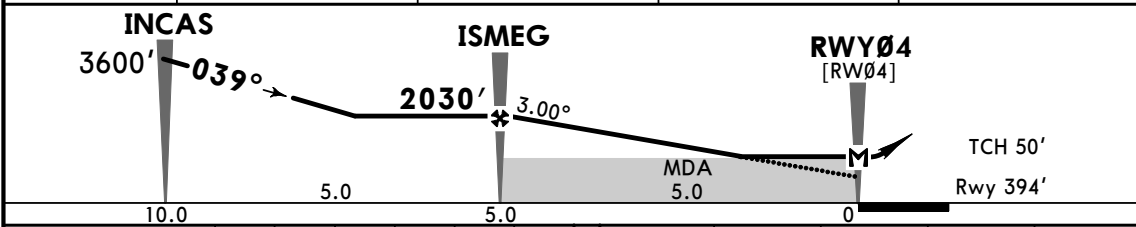
CAT A, B & C

JEPPESEN BARRANCABERMEJA, COLOMBIA  
RNP Rwy 04

*AWOS 127.725		*BUCARAMANGA Approach 119.0		*YARIGUIES Tower 118.45	
RNAV	Final Apch Crs <b>039°</b>	ISMEG <b>2030'</b> (1636')	LNAV MDA(H) <b>800'</b> (406')	Apt Elev 397'	Rwy 394'
<b>MISSED APCH: Maintain runway heading direct to NIBLU, climbing to 7000'. Cross NIBLU at 3000' or above, climb on NIBLU holding to 7000'.</b>					
RNP Apch	Alt Set: IN (hPa on req)	Trans level: FL 190	Trans alt: 18000'		



DIST TO THR	5.0	4.0	3.0	2.0
ALTITUDE	2030'	1716'	1398'	1080'



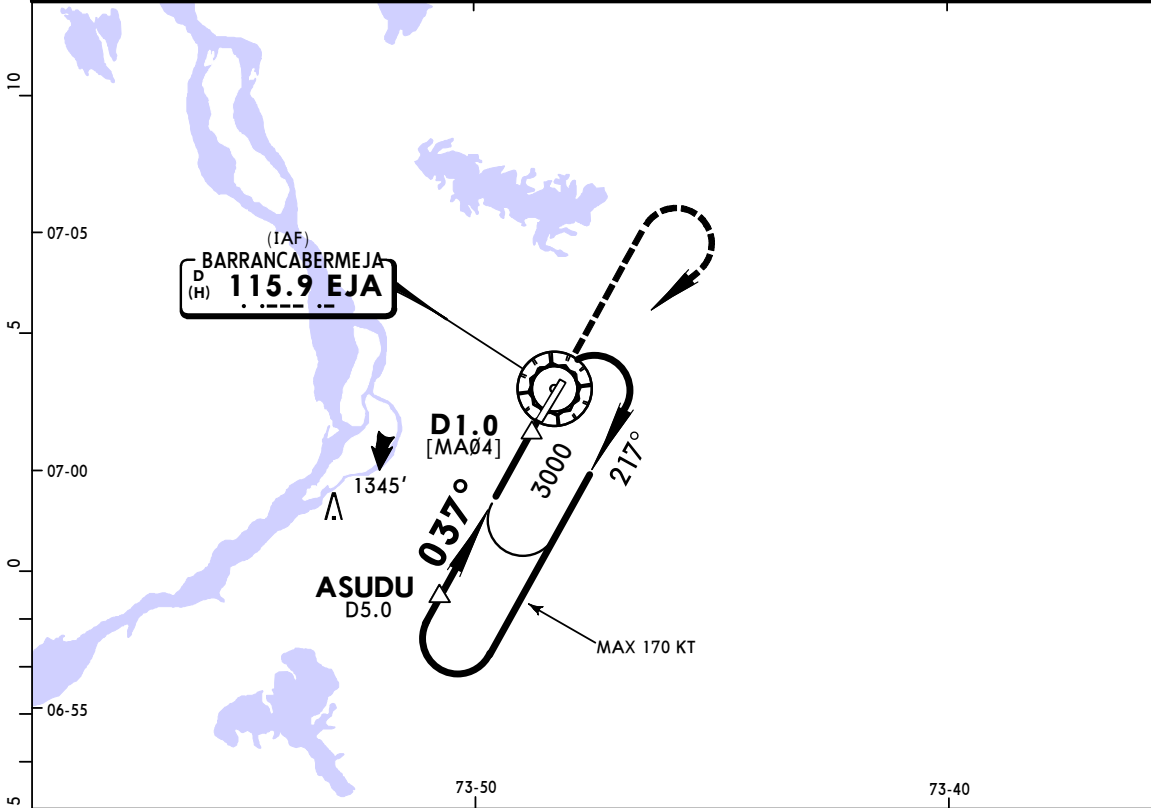
Gnd speed-Kts	70	90	100	120	140	160	PAPI-L	7000'	Rwy hdg	D	NIBLU	
Descent Angle	3.00°	372	478	531	637	743						849
MAP at RWY04 or FAF to MAP	5.0	4:17	3:20	3:00	2:30	2:09						1:53

STRAIGHT-IN LANDING RWY 04				CIRCLE-TO-LAND			
LNAV MDA(H) <b>800'</b> (406')				MDA(H)			
A				Max Kts			
B	2100m			100	920' (523') - 2400m		
C	2300m			135	1020' (623') - 3600m		
D	NOT APPLICABLE			180	NOT APPLICABLE		

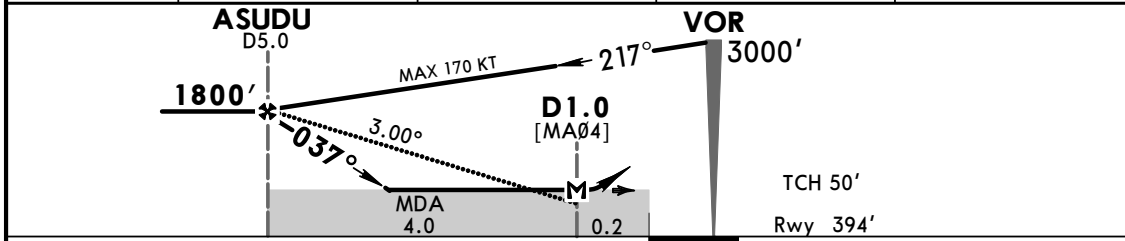
PANS OPS



*AWOS 127.725		*BUCARAMANGA Approach 119.0		*YARIGUIES Tower 118.45	
VOR EJA <b>115.9</b>	Final Apch Crs <b>037°</b>	Minimum Alt ASUDU <b>1800'</b> (1406')	MDA(H) <b>800'</b> (406')	Apt Elev 397' Rwy 394'	
<b>MISSED APCH: Climb on runway heading, crossing 1500'. Turn RIGHT climbing until 3000' to EJA VOR and hold.</b>					
Alt Set: IN (hPa on req) 1. DME required.		Trans level: FL 190		Trans alt: 18000'	



EJA DME	5.0	4.0	3.0	2.0
ALTITUDE	1800'	1480'	1170'	850'



Gnd speed-Kts	70	90	100	120	140	160	PAPI-L	1500'	3000'	EJA 115.9
Descent Angle 3.00°	372	478	531	637	743	849				
MAP at D 1.0 or FAF to MAP	4.0	3:26	2:40	2:24	2:00	1:43				

STRAIGHT-IN LANDING RWY04				CIRCLE-TO-LAND			
MDA(H) <b>800'</b> (406')				MDA(H) _____			
A	2100m			Max Kts. 100	920'(523') - 2400m		
B	2300m			135	1020'(623') - 3600m		
C	NOT APPLICABLE			180	NOT APPLICABLE		
D	NOT APPLICABLE			D	NOT APPLICABLE		

PANS OPS