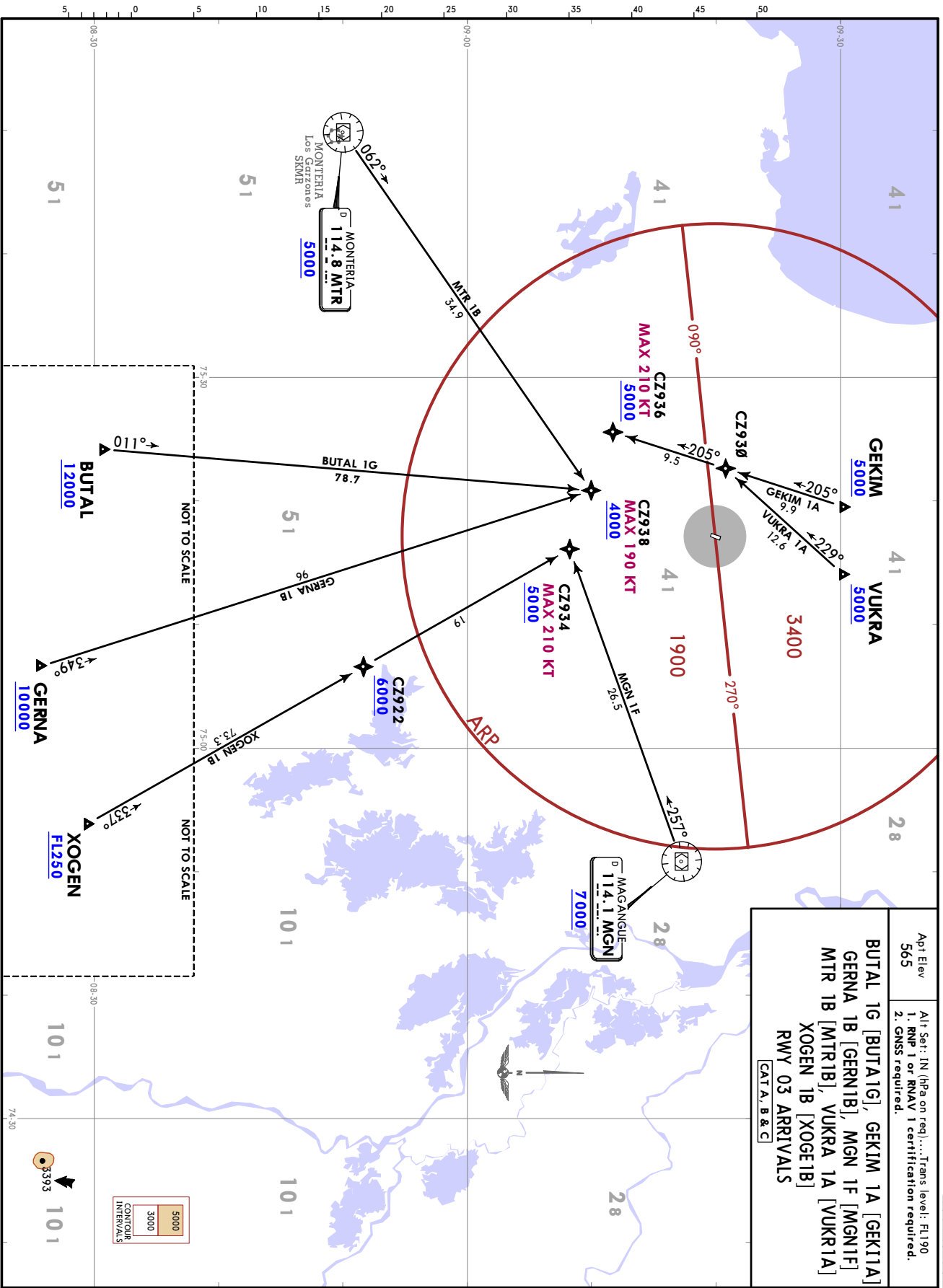
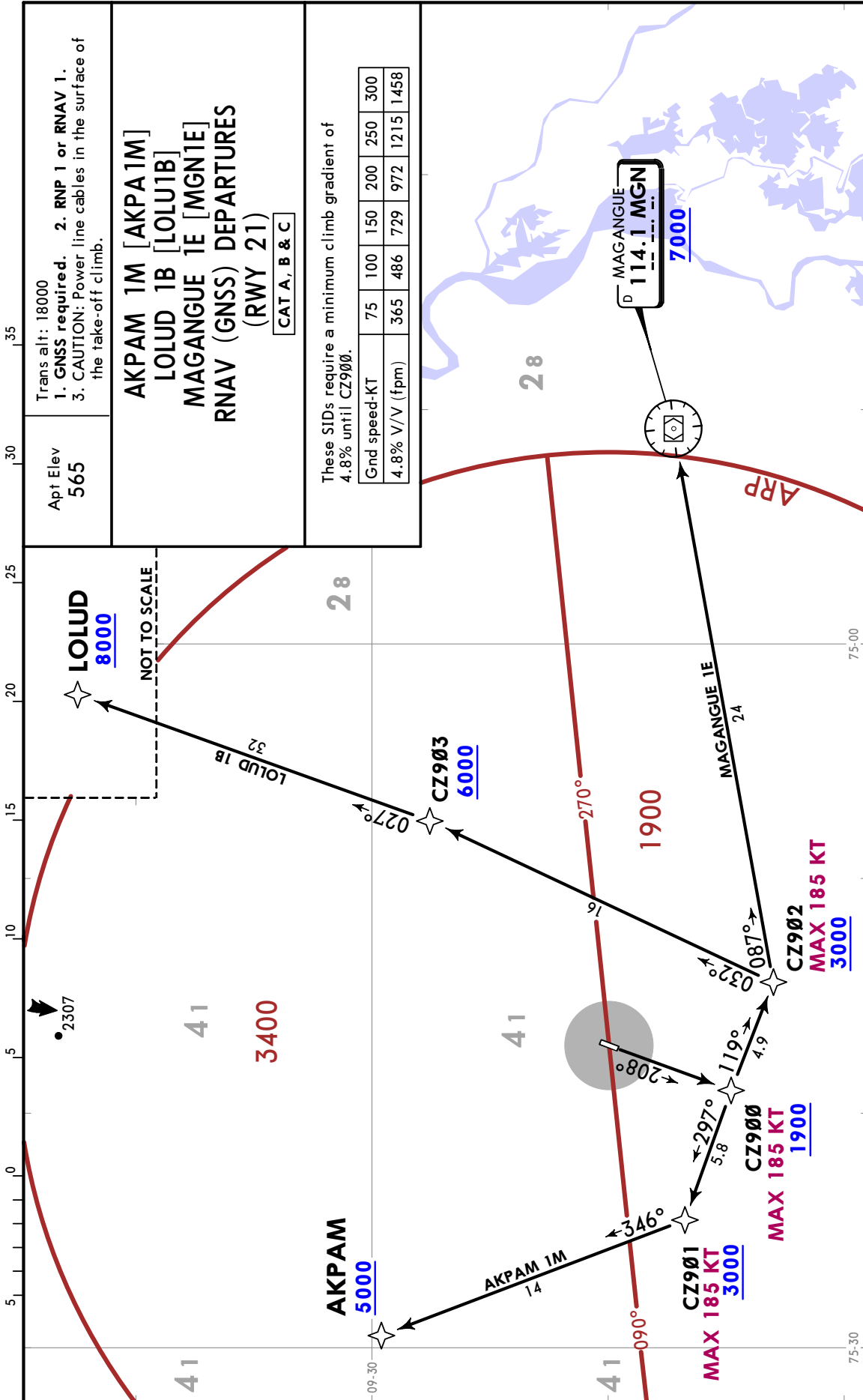


Apt Elev
565
Alt. Set: IN (hPa on req)....Trans level: FL190
1. RNP 1 or RNAV 1 certification required.
2. GNSS required.

BUTAL 1G [BUTA1G], GEKIM 1A [GEK11A]
GERNA 1B [GERN1B], MGN 1F [MGN1F]
MTR 1B [MTR1B], VUKRA 1A [VUKR1A]
XOGEN 1B [XOGE1B]
RWY 03 ARRIVALS
[CAT A, B & C]



CHANGES: Bearings, distances, crossing altitudes.



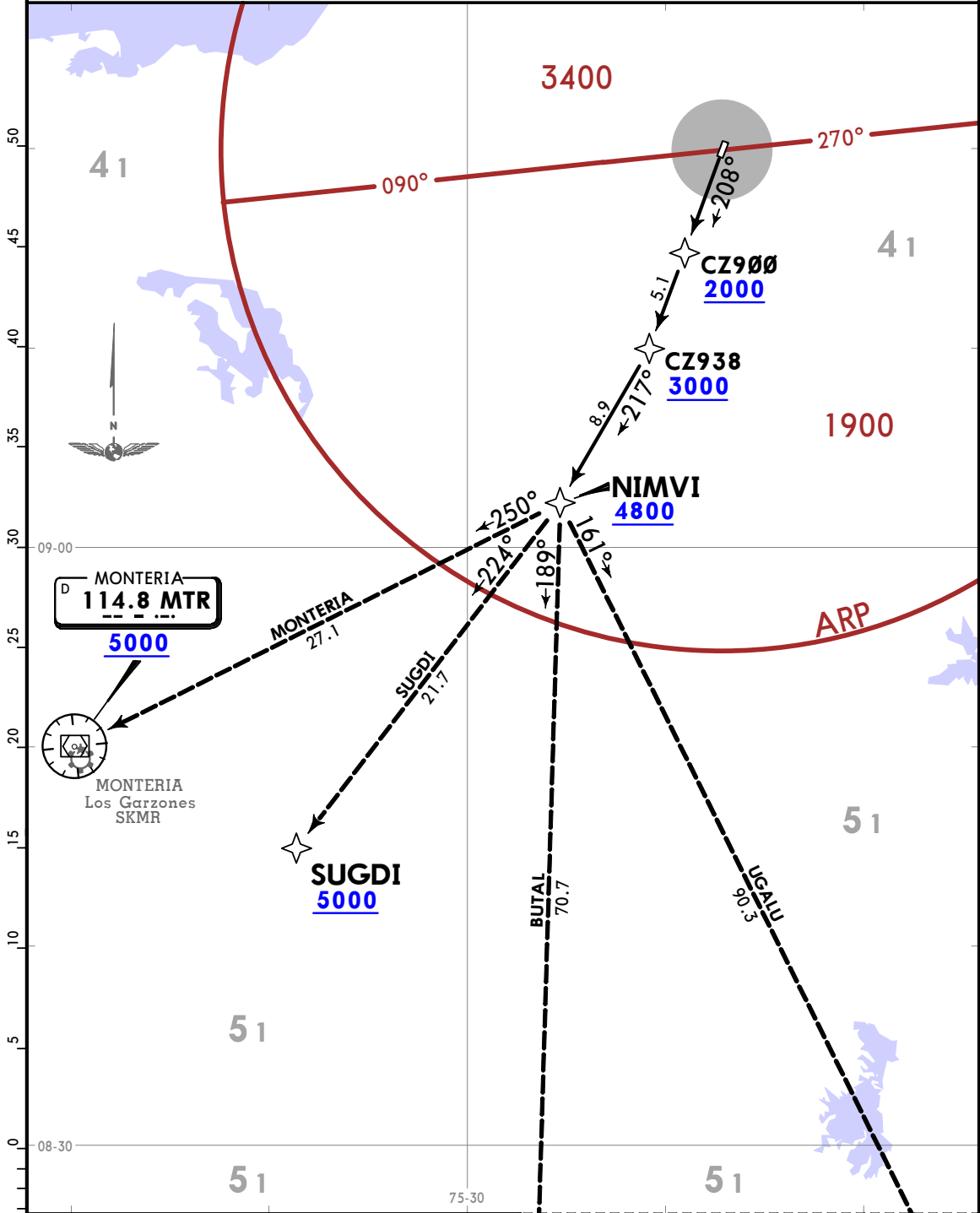
CHANGES: All waypoints now non-compulsory, procedure note added.

© JEPPESEN, 2018, 2019. ALL RIGHTS RESERVED.

Apt Elev 565 Trans alt: 18000
 1. GNS required. 2. RNP 1 or RNAV 1.
 3. CAUTION: Power line cables in the surface of the take-off climb.

NIMVI 1A RNAV (GNSS) DEPARTURE

[NIMV1A]
(RWY 21)
CAT A, B & C



These SIDs require a minimum climb gradient of 4.8% until CZ900.

Gnd speed-KT	75	100	150	200	250	300
4.8% V/V (fpm)	365	486	729	972	1215	1458

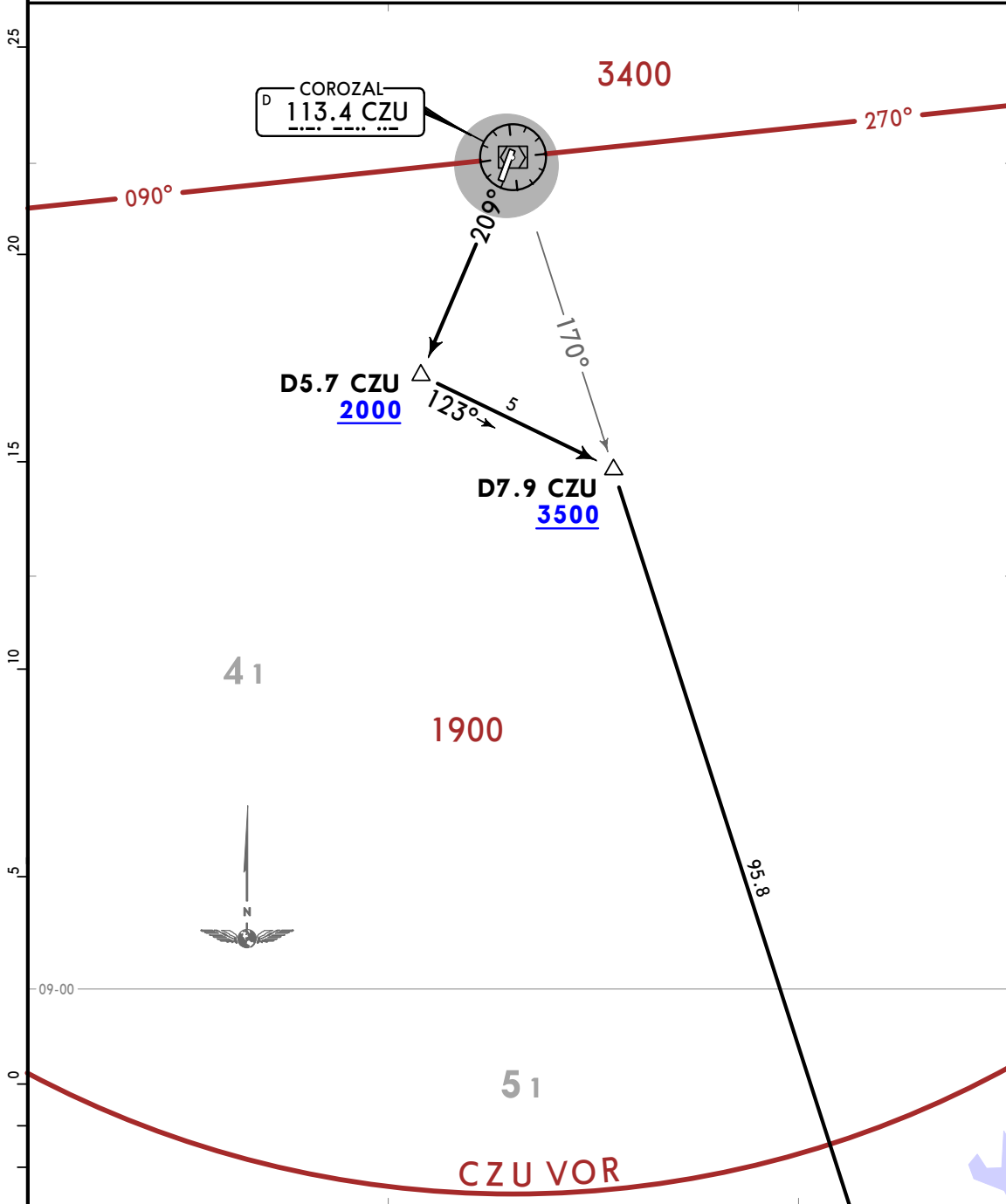
Apt Elev
565

Trans alt: 18000
CAUTION: Power line cables in the surface of the take-off climb.

UGALU 1B DEPARTURE

[UGAL1B]
(RWY 21)

CAT A, B & C

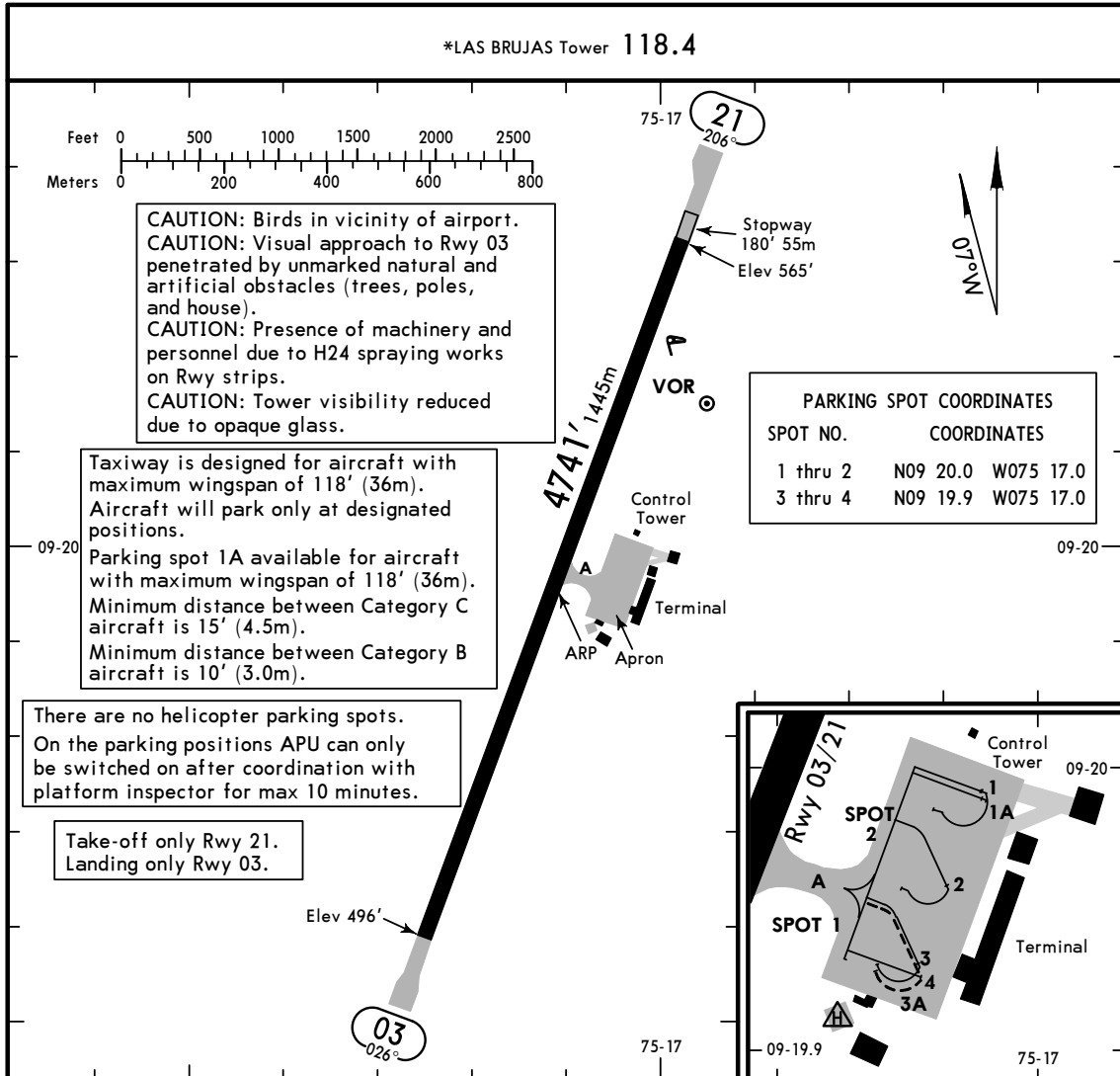


This SID requires a minimum climb gradient of 4.8% until 2000.

Gnd speed-KT	75	100	150	200	250	300
4.8% V/V (fpm)	365	486	729	972	1215	1458

NOT TO SCALE

UGALU
10000



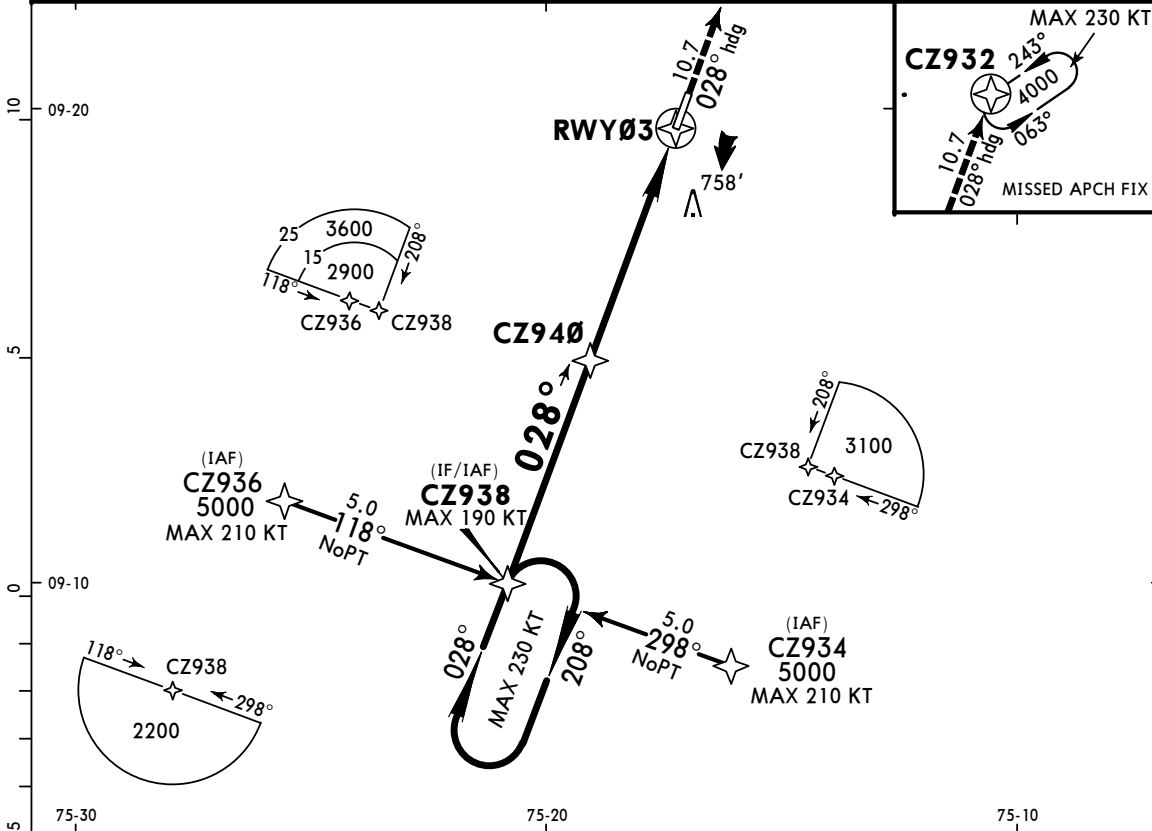
ADDITIONAL RUNWAY INFORMATION

RWY		USABLE LENGTHS			WIDTH
		LANDING BEYOND		TAKE-OFF	
		Threshold	Glide Slope		
03	MIRL REIL PAPI-L (angle 3.5°)			5233' 1595m	98'
21	MIRL REIL			5413' 1650m	30m

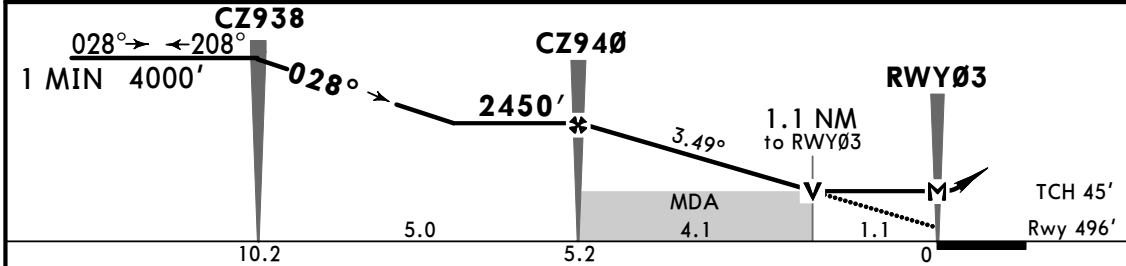
TAKE-OFF

	All Rwys
1 & 2 Eng	1600m
3 & 4 Eng	800m

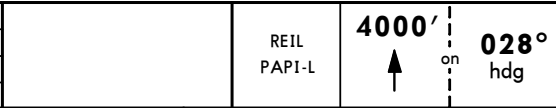
SOUTH BARRANQUILLA Approach 119.75			*LAS BRUJAS Tower 118.4		
RNAV	Final Apch Crs 028°	CZ940 2450' (1954')	LNAV/CDFA MDA(H) (CONDITIONAL) 940' (444')	Apt Elev 565'	TAA 25 NM IAF
MISSED APCH: Climb to 4000' on heading 028° to CZ932 and hold. For new approach climb to 5000', then direct to IAF. Missed approach climb gradient mim 4.0%					
Alt Set: INCHES (hPa on req)		Trans level: FL 190		Trans alt: 18000'	
RNP Apch	1. CAUTION: Visual approach section penetrated by trees and power lines.				



NM TO THRESHOLD	CZ940	4.0	3.0	2.0	1.0
ALTITUDE	2450'	2050'	1680'	1310'	940'



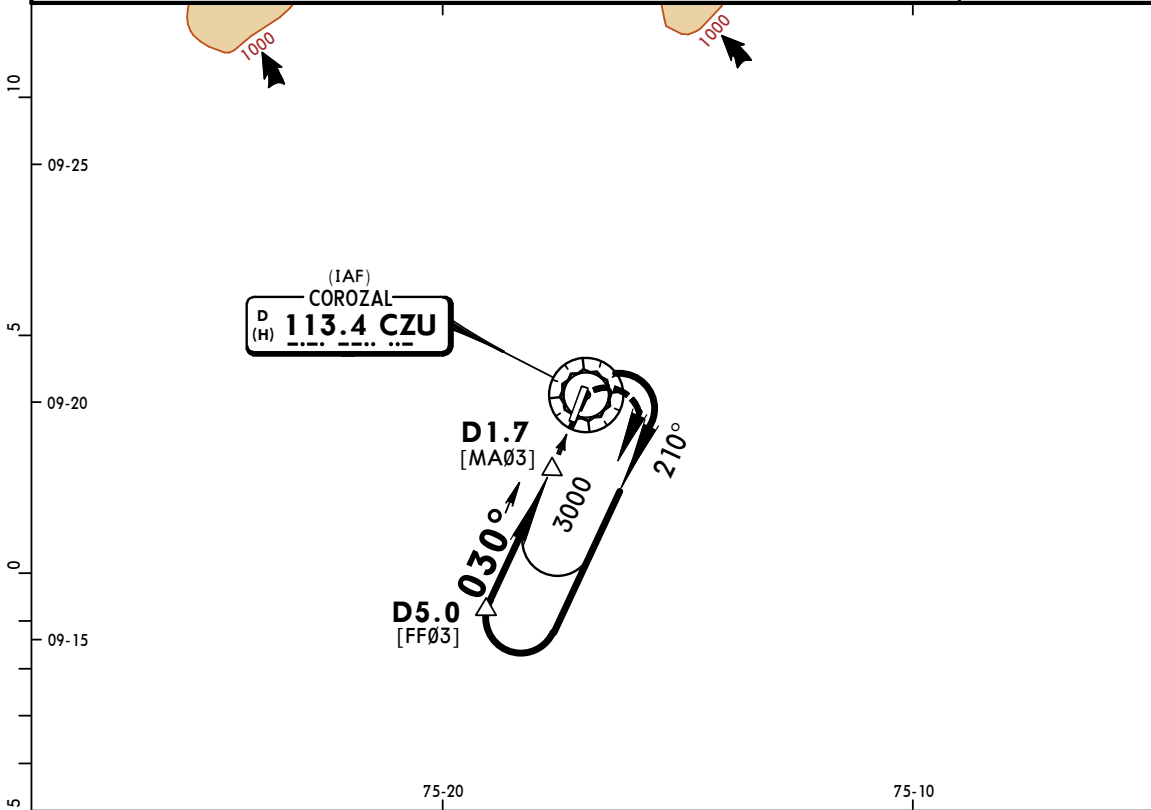
Gnd speed-Kts	70	90	100	120	140	160	
Descent Angle 3.49°	432	556	618	741	865	988	
MAP at RWY03 or FAF to MAP	5.2	4:27	3:28	3:07	2:36	2:14	1:57



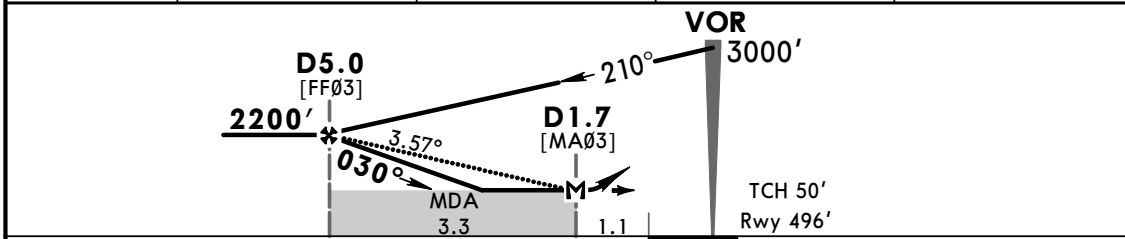
STRAIGHT-IN LANDING RWY 03			CIRCLE-TO-LAND		
LNAV/CDFA MDA(H) 940' (444')		LNAV MDA(H) 940' (444')		Max Kts	MDA(H)
A				100	1100' (535') - 2500m
B	2100m		2300m	135	
C			2500m	180	1210' (645') - 2900m
D	NOT APPLICABLE		NOT APPLICABLE	D	NOT APPLICABLE

PANS OPS

SOUTH BARRANQUILLA Approach				*LAS BRUJAS Tower	
119.75				118.4	
VOR CZU 113.4	Final Apch Crs 030°	Minimum Alt D5.0 2200' (1704')	MDA(H) 940' (444')	Apt Elev 565' Rwy 496'	
MISSED APCH: Maintain approach heading, proceed to CZU VOR hold, climbing to 3000'.					
Alt Set: IN (hPa on req) Trans level: FL 190 Trans alt: 18000' 1. CZU DME required. 2. CAUTION: Natural and artificial obstacles on the approach end of Rwy 03.					



CZU DME	5.0	4.0	3.0	1.7
ALTITUDE	2200'	1830'	1460'	940'



Gnd speed-Kts	70	90	100	120	140	160	REIL PAPI-L	3000' RT	CZU 113.4	
Descent Angle	3.57°	442	569	632	758	885				1011
MAP at D1.7 or FAF to MAP	3.3	2:50	2:12	1:59	1:39	1:25				1:14

STRAIGHT-IN LANDING RWY 03				CIRCLE-TO-LAND			
MDA(H) 940' (444')				MDA(H)			
A				Max Kts			
B	2300m			100	1070' (505') - 2400m		
C	2500m			135	1230' (665') - 3600m		
D	NOT APPLICABLE			180	NOT APPLICABLE		

PANS OPS