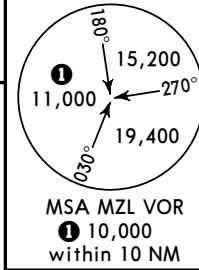
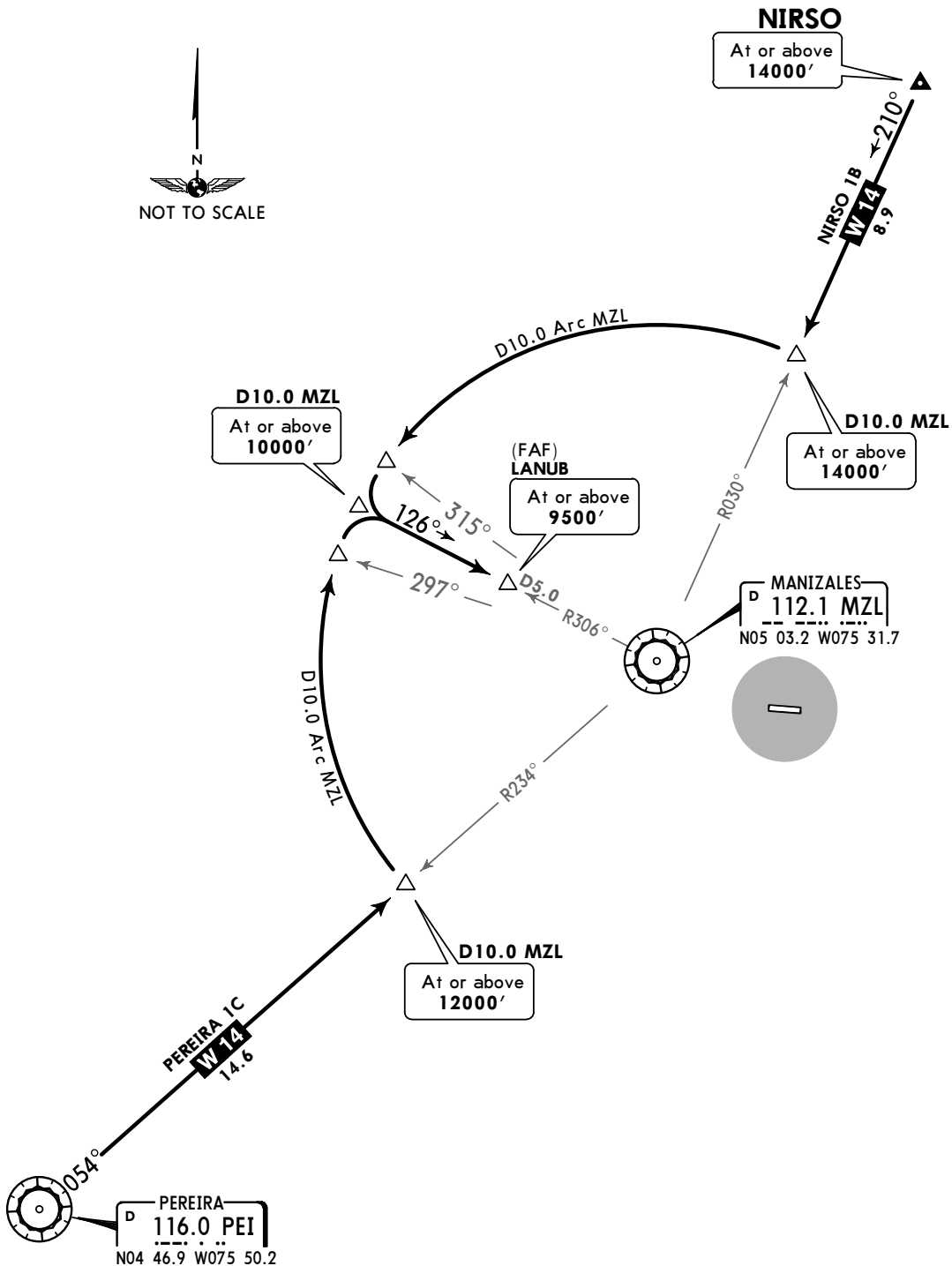


Apt Elev  
6945'

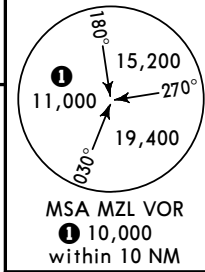
Alt Set: IN (hPa on req) Trans level: FL190 Trans alt: 18000'  
MZL VOR/DME required.



NIRSO 1B [NIRS1B], PEREIRA 1C [PEI1C]  
ARRIVALS  
(RWY 10)  
CAT A & B

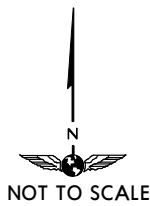
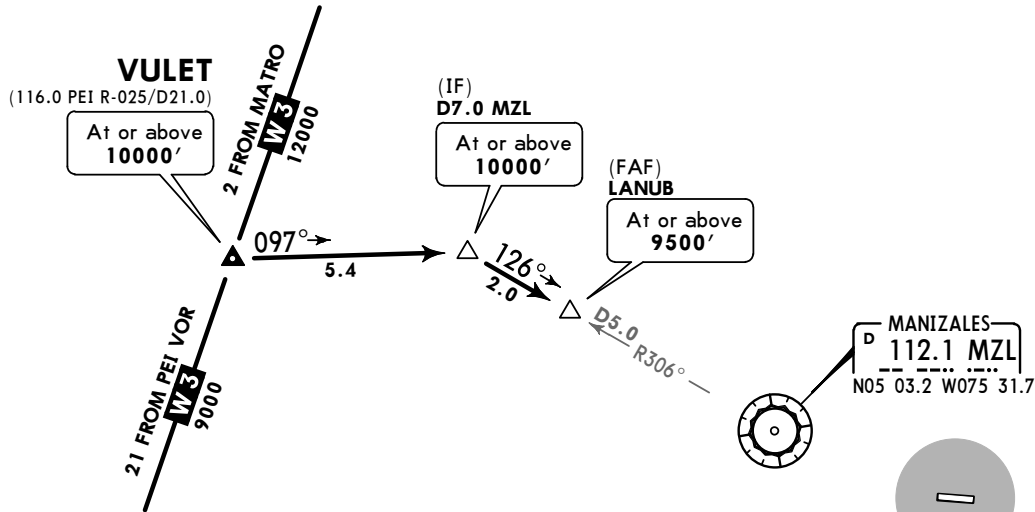


Apt Elev 6945' Alt Set: IN (hPa on req) Trans level: FL190 Trans alt: 18000'  
1. MZL VOR/DME required.  
2. PEI VOR/DME required.



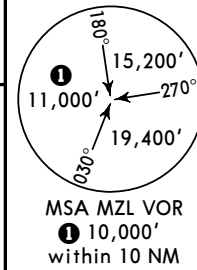
VULET 1A ARRIVAL [VULE1A]  
(RWY 10)

CAT A & B

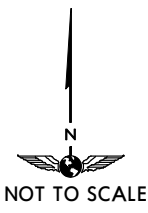
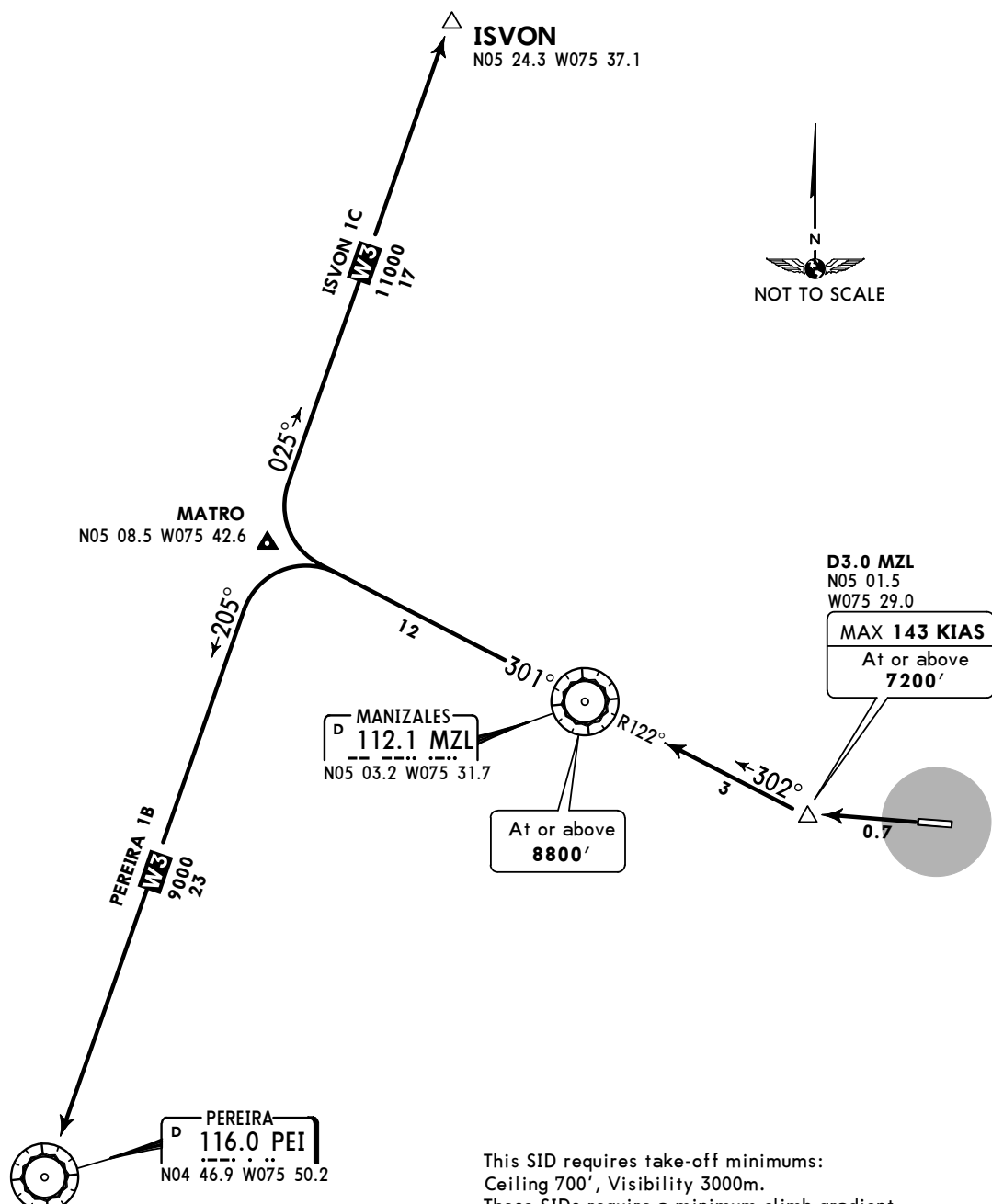


Apt Elev  
6945'

Trans level: FL190 Trans alt: 18000'

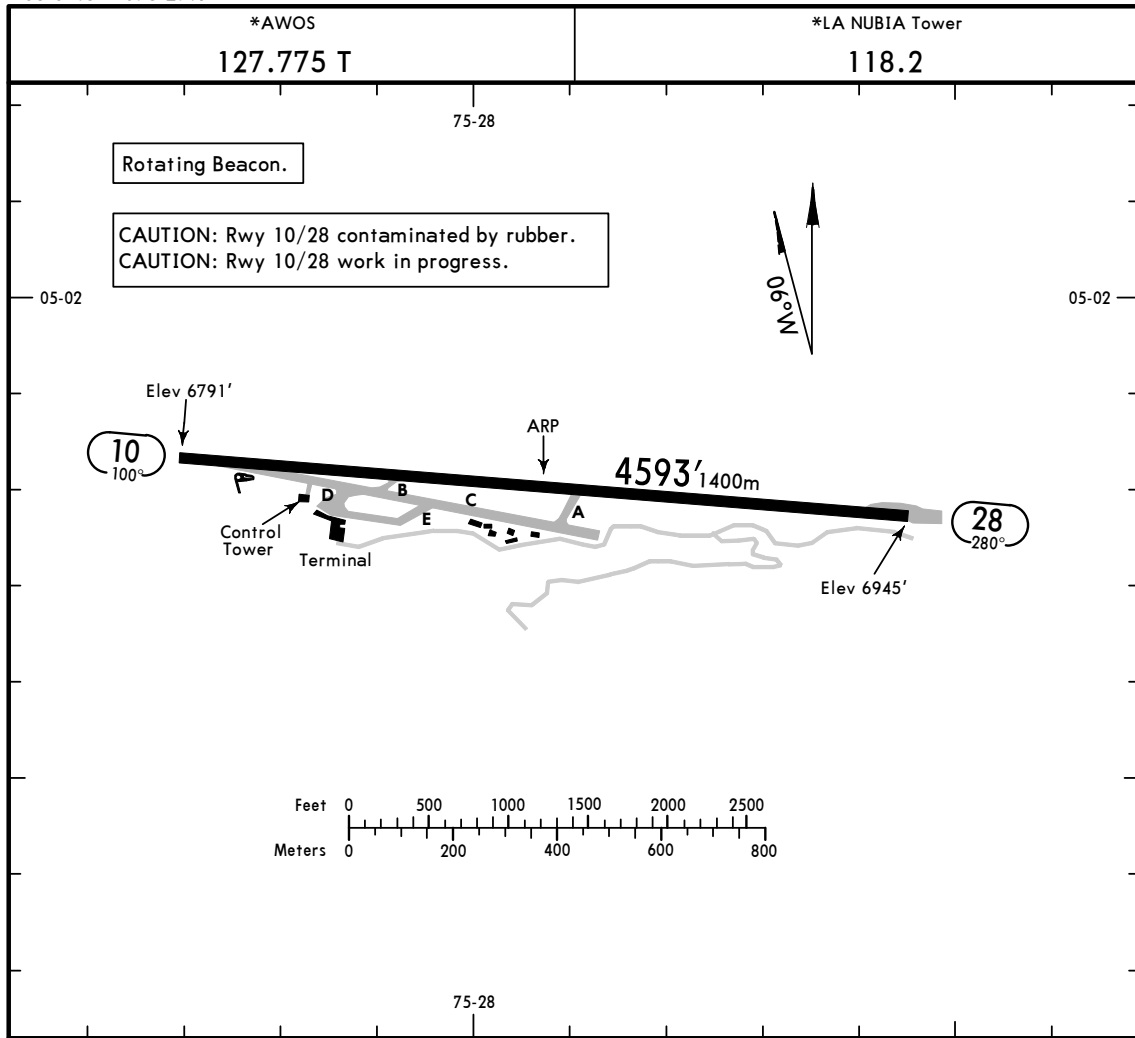


ISVON 1C (ISVON 1C) [ISVO1C]  
PEREIRA 1B (PEI 1B) [PEI1B]  
DEPARTURES  
(RWY 28)  
CAT A & B



This SID requires take-off minimums:  
Ceiling 700', Visibility 3000m.  
These SIDs require a minimum climb gradient  
of 8.8% until MZL VOR.

Gnd speed-KT	75	100	150	200	250	300
8.8% V/V (fpm)	668	891	1337	1782	2228	2673



ADDITIONAL RUNWAY INFORMATION

RWY		USABLE LENGTHS		TAKE-OFF	WIDTH
		Threshold	Landing Beyond Glide Slope		
10	REIL PAPI-L (angle 2.50°)			①	66'
28		②			20m

- ① Take-off not authorized due to obstacles.
- ② Landing not authorized due to obstacles.

TAKE-OFF

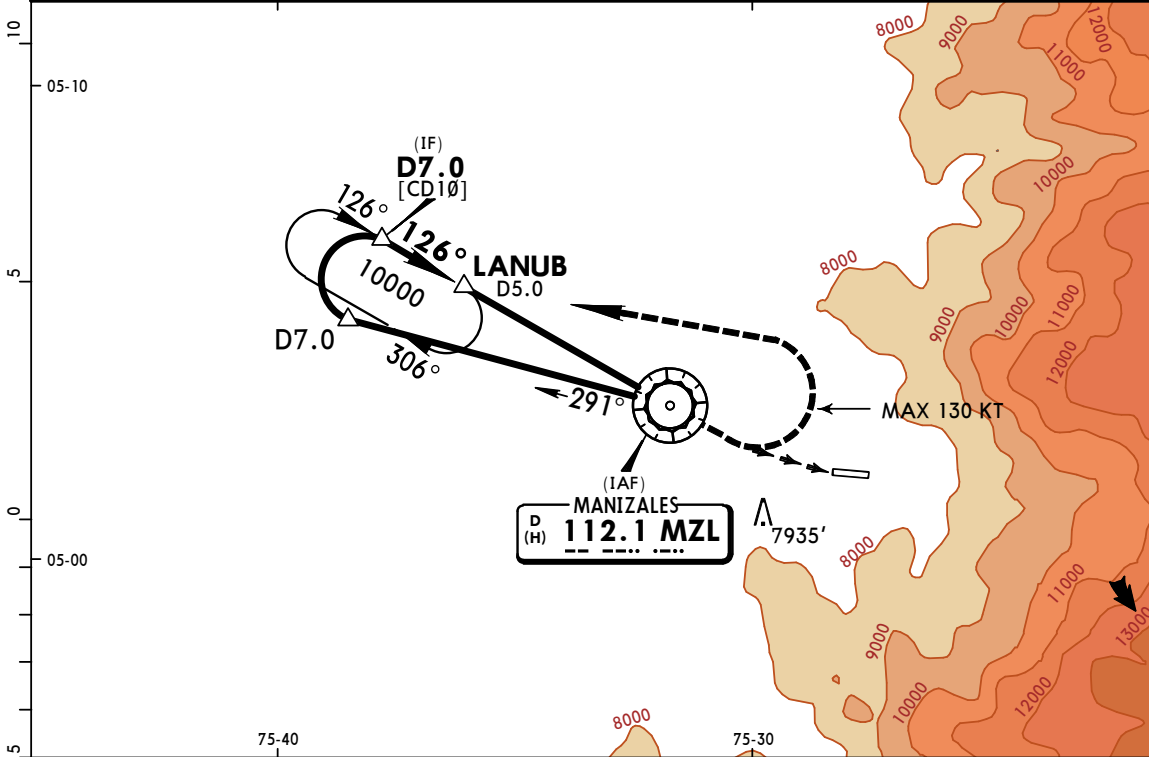
	Rwy 28	Rwy 10
1 or More Eng	1600m	NOT APPLICABLE
3 or More Eng	800m	

SKMZ/MZL  
LA NUBIA

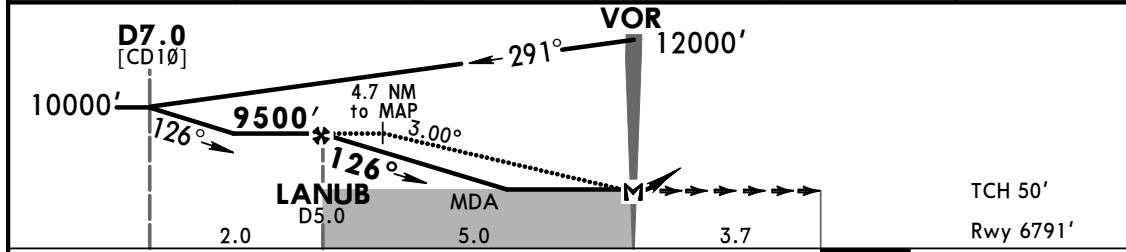
**JEPPESEN**  
24 AUG 18 **(13-1)** MISSED APCH CLIMB  
GRADIENT MIM 3.5%

**MANIZALES, COLOMBIA**  
**VOR Z Rwy 10**

*AWOS <b>127.775 T</b>	MEDELLIN Approach <b>121.1</b>		*PEREIRA Approach <b>120.7</b>		*LA NUBIA Tower <b>118.2</b>
VOR MZL <b>112.1</b>	Final Apch Crs <b>126°</b>	Minimum Alt <b>LANUB</b> <b>9500'</b> (2709')	MDA(H) <b>7900'</b> (1109')	Apt Elev 6945' Rwy 6791'	
<b>MISSED APCH: Crossing MZL VOR LEFT turn climbing until LANUB holding pattern to 10000'.</b>					<p>MZL VOR 10,000 within 10 DME</p>
Alt Set: INCHES (hPa on req)		Trans level: FL 190		Trans alt: 18000'	
1. MZL VOR/DME required.					



MZL DME	5.0	4.0	3.0	2.0	1.0
ALTITUDE	9500'	9182'	8864'	8546'	8228'



Gnd speed-Kts	70	90	100	120	140	160	PAPI-L	MZL <b>112.1</b>	←	<b>10000'</b>	↑	<b>LANUB</b>
Descent Angle 3.00°	372	478	531	637	743	849						
MAP at VOR or LANUB to MAP	5.0	4:17	3:20	3:00	2:30	2:09						

STRAIGHT-IN LANDING RWY 10 MISSED APCH CLIMB GRADIENT MIM 3.5% MDA(H) <b>7900'</b> (1109')	CIRCLE-TO-LAND
--	----------------

A	7000m	A	NA
B		B	
C	NA	C	
D		D	

CHANGES: AWOS added.

© JEPPESEN, 2014, 2018. ALL RIGHTS RESERVED.

SKMZ/MZL  
LA NUBIA

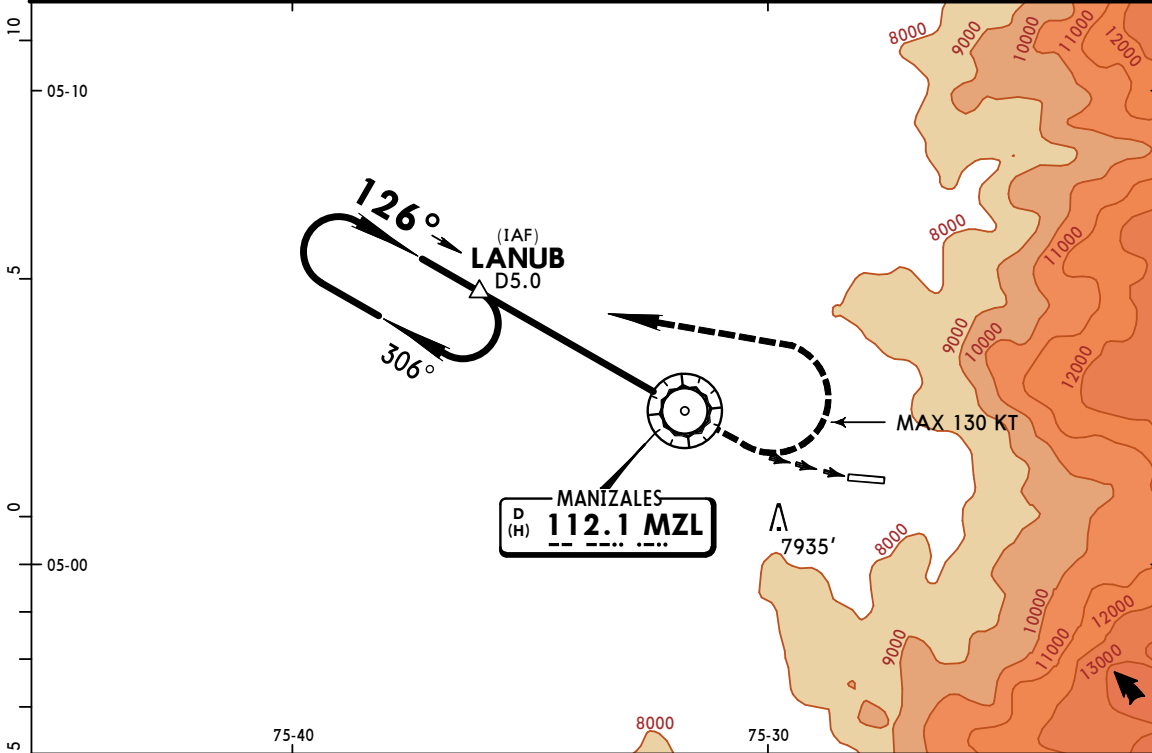
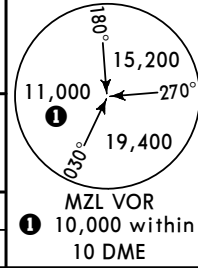
JEPPESEN

24 AUG 18 (13-2) MISSED APCH CLIMB  
GRADIENT MIM 3.5%

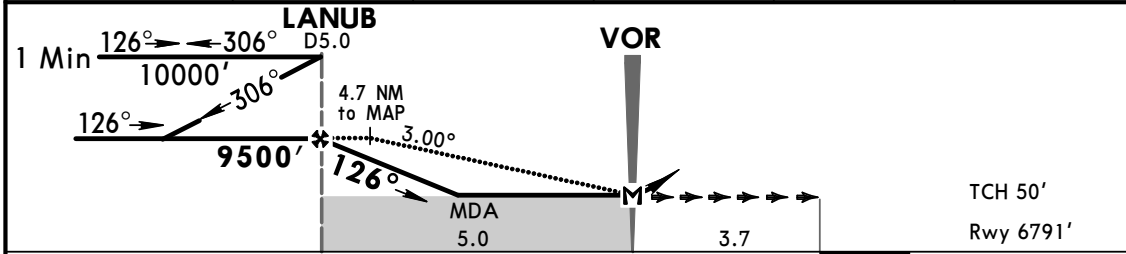
MANIZALES, COLOMBIA  
VOR Y Rwy 10

CAT A & B

*AWOS 127.775 T	MEDELLIN Approach 121.1		*PEREIRA Approach 120.7		*LA NUBIA Tower 118.2
VOR MZL 112.1	Final Apch Crs 126°	Minimum Alt LANUB 9500' (2709')	MDA(H) 7900' (1109')	Apt Elev 6945' Rwy 6791'	
<b>MISSED APCH: Crossing MZL VOR LEFT turn climbing until LANUB holding pattern to 10000'.</b>					
Alt Set: INCHES (hPa on req)		Trans level: FL 190		Trans alt: 18000'	
1. MZL VOR/DME required.					



MZL DME	5.0	4.0	3.0	2.0	1.0
ALTITUDE	9500'	9182'	8864'	8546'	8228'



Gnd speed-Kts	70	90	100	120	140	160	PAPI-L	MZL 112.1	LT	10000'	LANUB	
Descent Angle	3.00°	372	478	531	637	743						849
MAP at VOR or LANUB to MAP	5.0	4:17	3:20	3:00	2:30	2:09						1:53

STRAIGHT-IN LANDING RWY 10						CIRCLE-TO-LAND					
MISSED APCH CLIMB GRADIENT MIM 3.5%											
MDA(H) 7900' (1109')											

A	7000m						A	NA					
B							B						
C	NA						C						
D							D						

PANS OPS

CHANGES: AWOS added.

© JEPPESEN, 2013, 2018. ALL RIGHTS RESERVED.