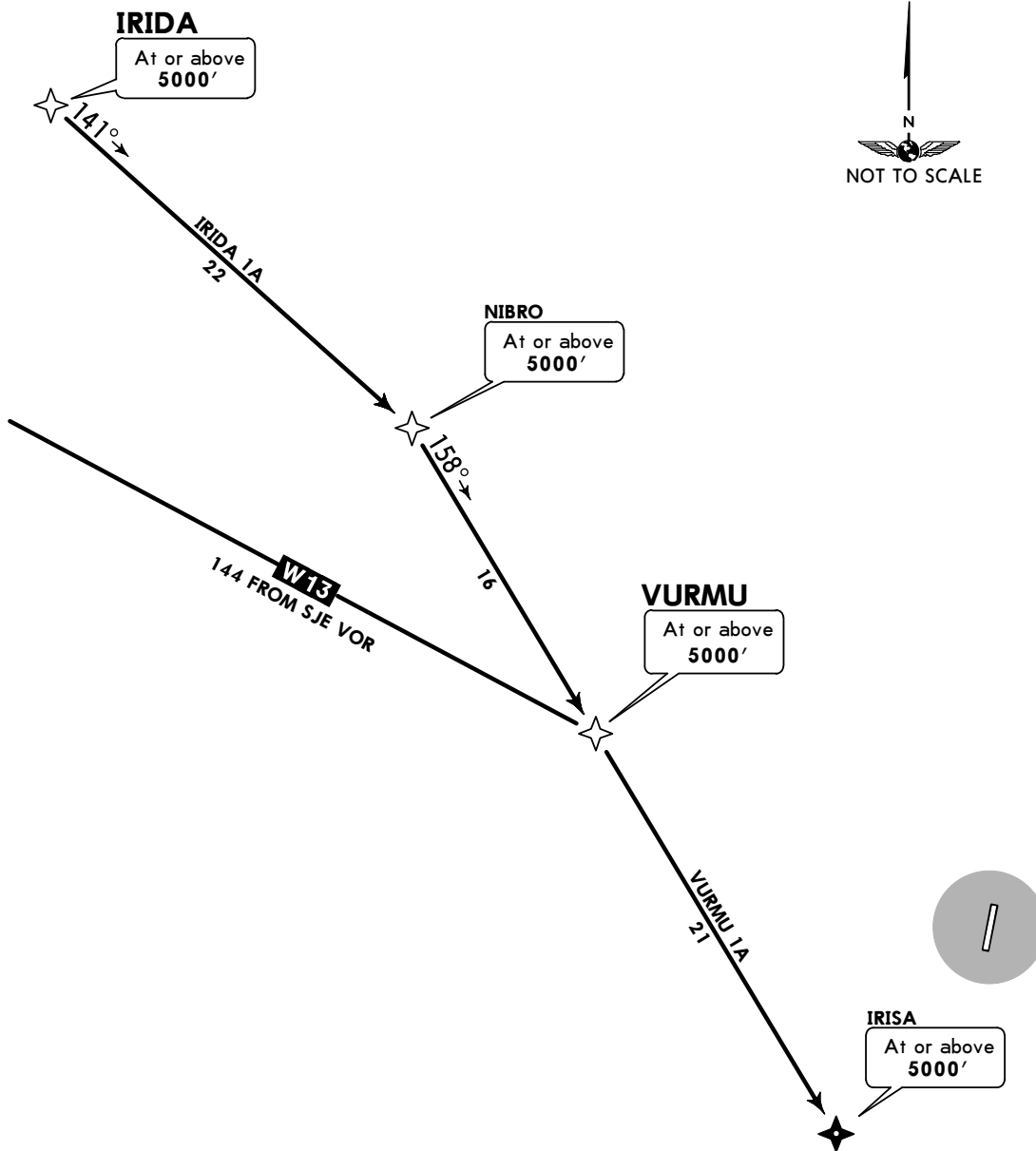


Apt Elev  
680'

Alt Set: IN (hPa on req) Trans level: FL190 Trans alt: 18000'  
1. RNP 1 or RNAV 1 certification required.  
2. GNSS required.

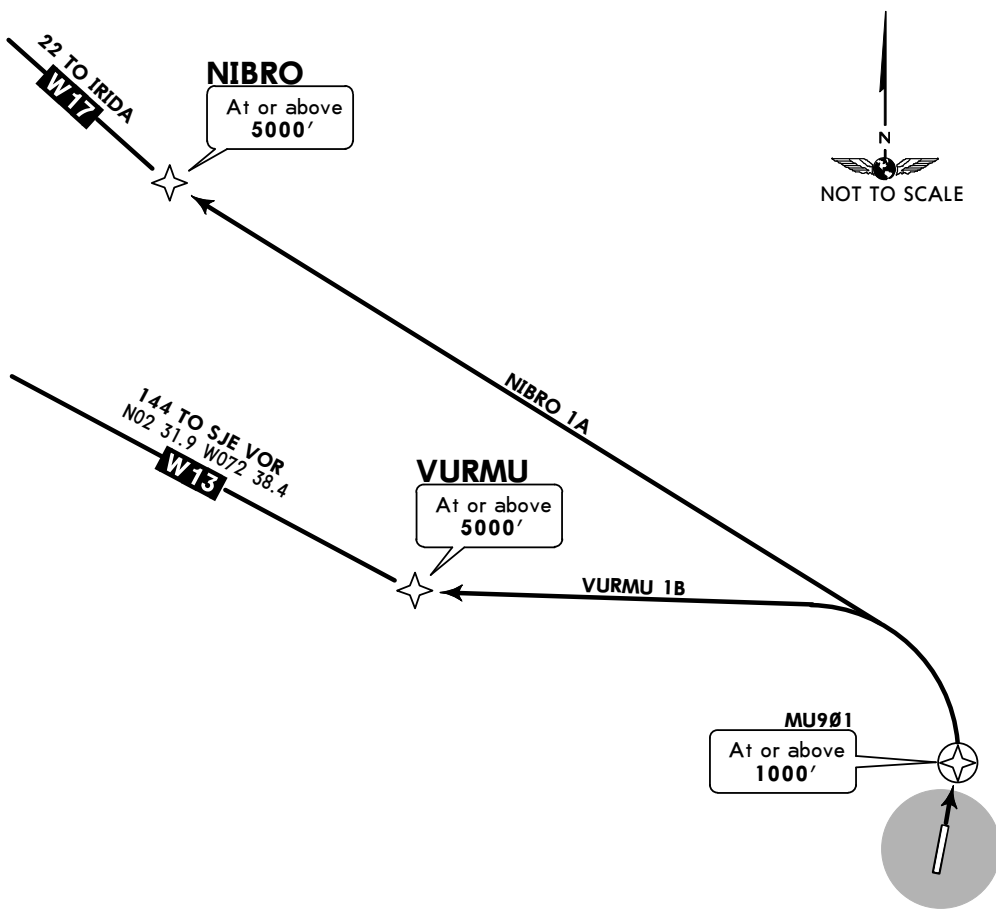
IRIDA 1A (IRIDA 1A) [IRID1A]  
VURMU 1A (VURMU 1A) [VURM1A] RNAV (GNSS) ARRIVALS  
(RWY 02)  
CAT A, B & C



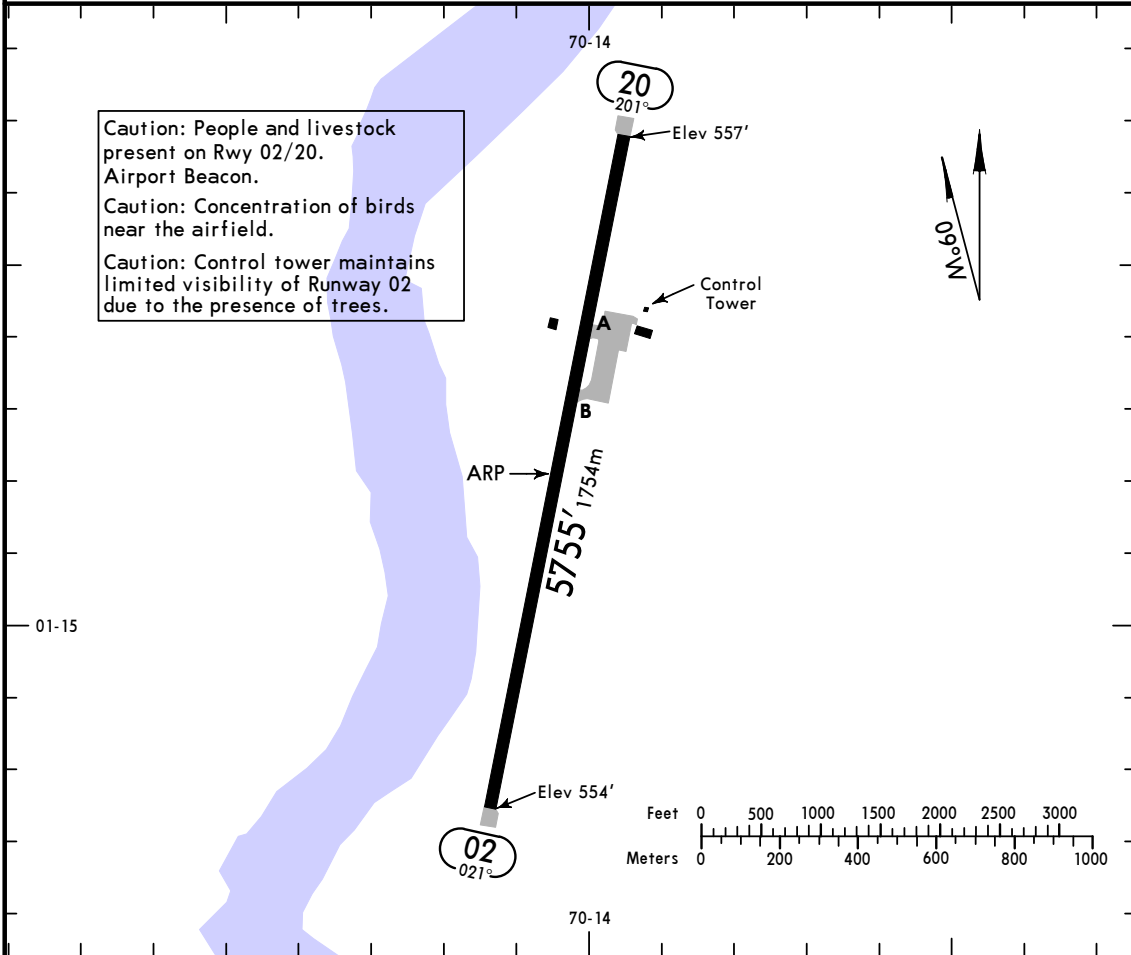
Apt Elev  
680'

Trans level: FL190 Trans alt: 18000'  
1. RNP 1 or RNAV 1 certification required.  
2. GNSS required.

NIBRO 1A (NIBRO 1A) [NIBR1A]  
VURMU 1B (VURMU 1B) [VURM1B] RNAV (GNSS) DEPARTURES  
(RWY 02)  
CAT A, B & C



\*FABIO A. LEON BENTLEY Tower 118.1



ADDITIONAL RUNWAY INFORMATION

RWY		USABLE LENGTHS			WIDTH
		Threshold	Landing Beyond Glide Slope	TAKE-OFF	
02	RL PAPI-L (angle 3.0°)				98'
20	RL APAPI-L (angle 3.0°)				30m

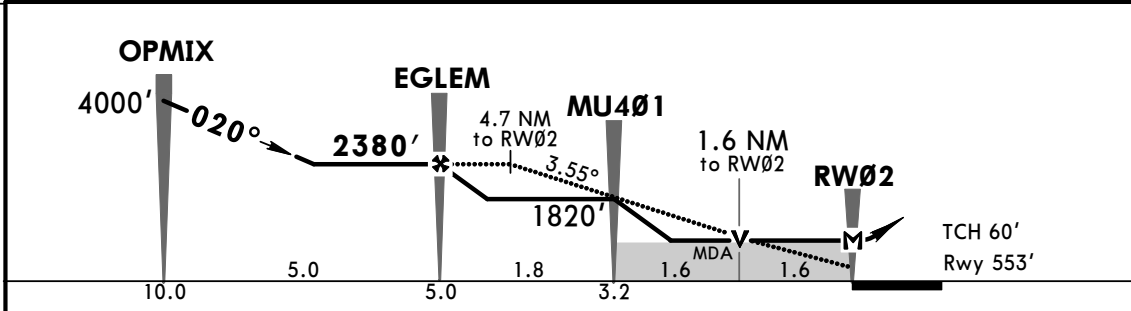
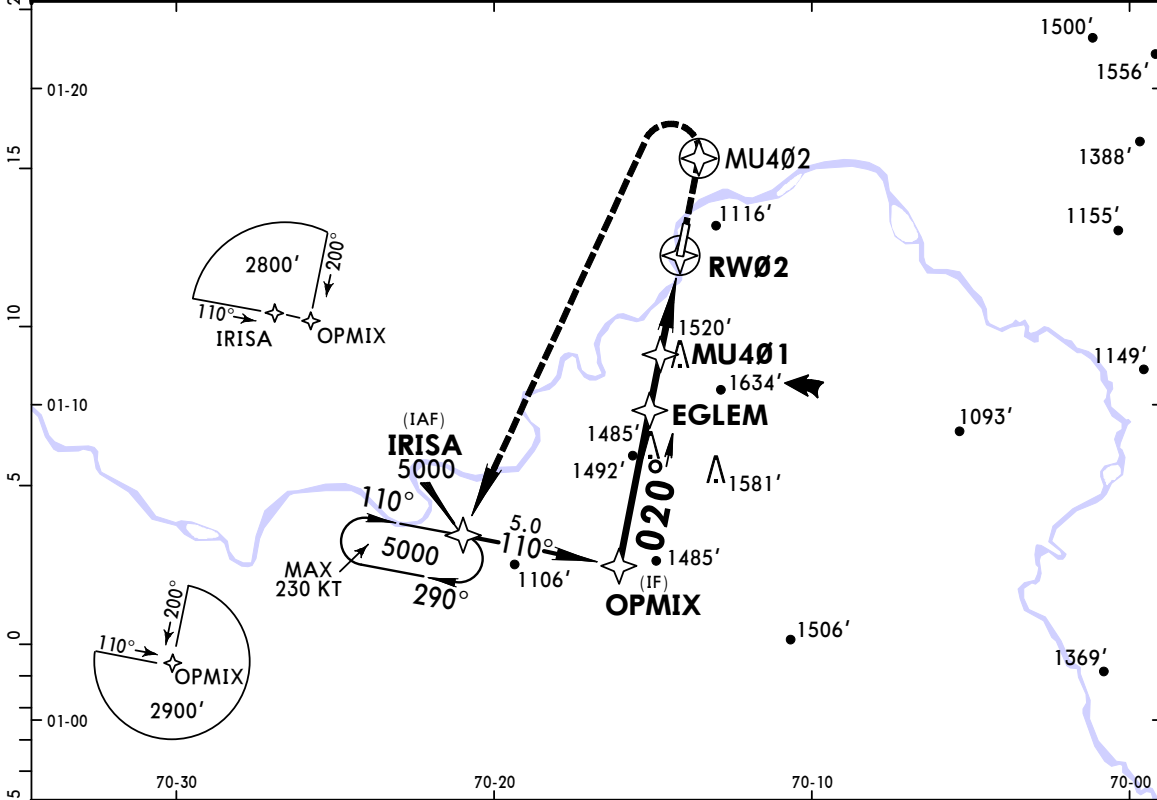
TAKE-OFF

	VOR Rwy 20
A	600' - 2900m
B	
C	NOT APPLICABLE
D	

\*FABIO A. LEON BENTLEY Tower 118.1

BRIEFING STRIP

RNAV	Final Apch Crs <b>020°</b>	Minimum Alt EGLEM <b>2380'</b> (1827')	LNAV MDA(H) <b>1200'</b> (647')	Apt Elev 680' Rwy 553'	TAA 25 NM IAF
<b>MISSED APCH:</b> Climb on runway heading until MU402 and 1500', then turn LEFT (Max IAS 185 KT until end of turn) climbing to IRISA holding pattern at 5000'.					
Alt Set: IN (hPa on req)      Trans level: FL 190      Trans alt: 18000' <b>1. Certification RNP1 or RNAV1 GNSS required.</b> 2. PAPI and descent angle are not coincident.					



Gnd speed-Kts	70	90	100	120	140	160	APAPI-L	1500' ↑ Rwy hdg	
Descent Angle	3.55°	440	565	628	754	880			1005
MAP at RW02	5.0	4:17	3:20	3:00	2:30	2:09			1:53

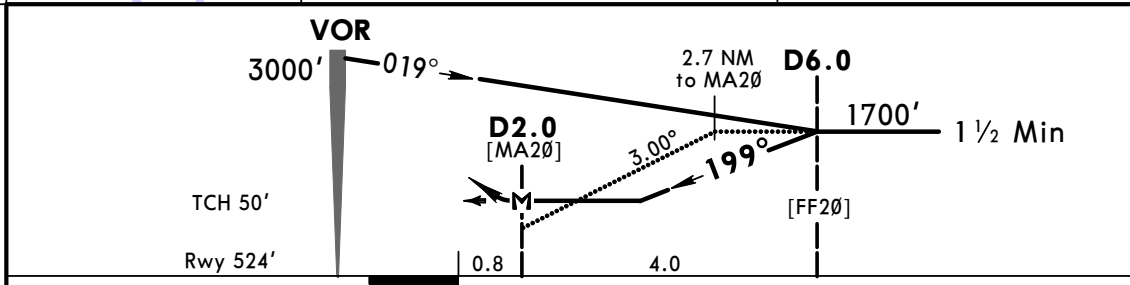
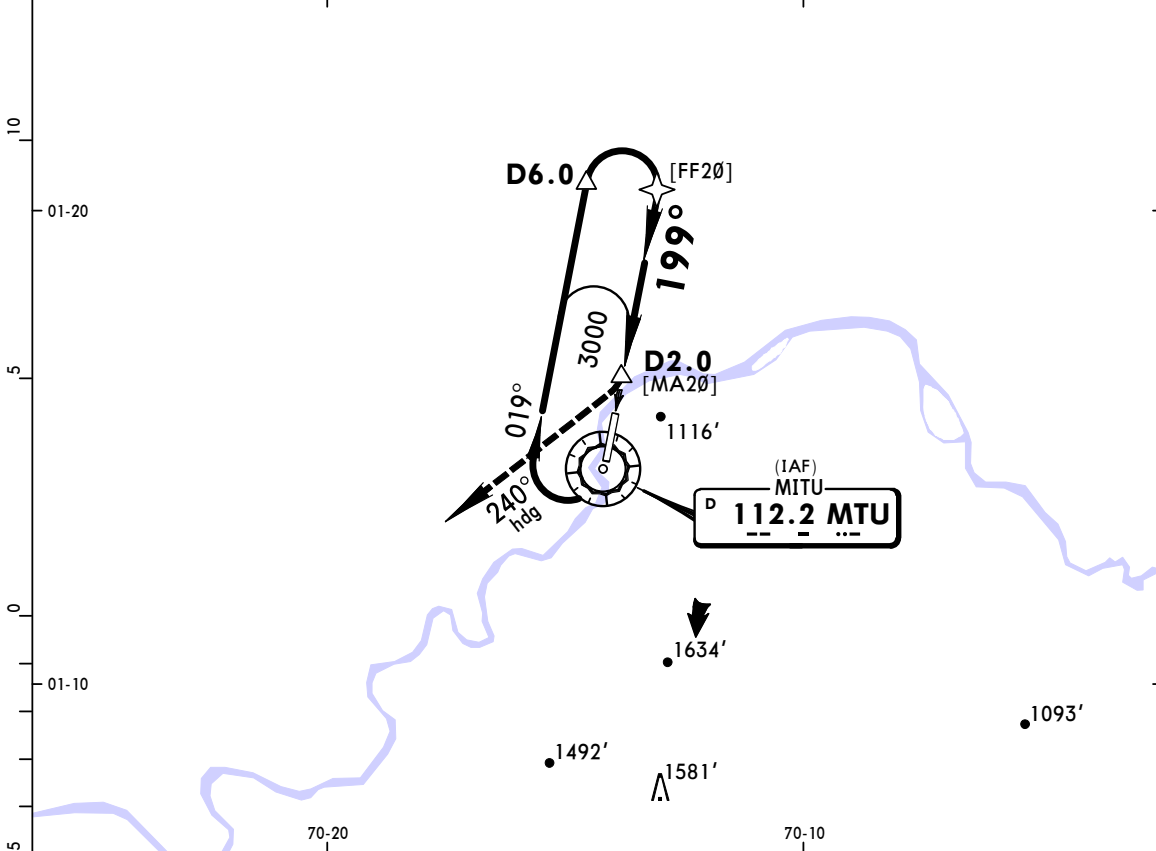
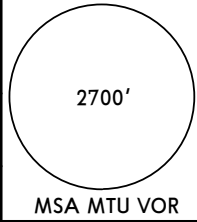
STRAIGHT-IN LANDING RWY02				CIRCLE-TO-LAND			
LNAV MDA(H) <b>1200'</b> (647')				Max Kts			
A	3200m			100	1330' (650') - 3200m		
B	3400m			135	1910' (1230') - 5000m		
C	NOT APPLICABLE			180	NOT APPLICABLE		
D	NOT APPLICABLE			D	NOT APPLICABLE		

PANS OPS

\*FABIO A. LEON BENTLEY Tower 118.1

BRIEFING STRIP™

VOR MTU <b>112.2</b>	Final Apch Crs <b>199°</b>	No FAF	MDA(H) <b>1280'</b> (756')	Apt Elev 680' Rwy 524'
<b>MISSED APCH: Turn RIGHT on 240° heading climbing until 2000', then proceed to join holding pattern at 3000'.</b>				
Alt Set: IN (hPa on req)		Trans level: FL 190		Trans alt: 18000'
<b>1. DME required.</b>				



Gnd speed-Kts	70	90	100	120	140	160	APAPI-L	2000' on 240° RT hdg
Descent Angle 3.00°	372	478	531	637	743	849		
MAP at D2.0								

<b>STRAIGHT-IN LANDING RWY 20</b>		<b>CIRCLE-TO-LAND</b>	
MDA(H) <b>1280'</b> (756')		MDA(H) _____	
A	2900m	Max Kts 100	<b>1280'</b> (600') - 2900m
B		135	
C	NOT APPLICABLE	C	NOT APPLICABLE
D		D	

PANS OPS