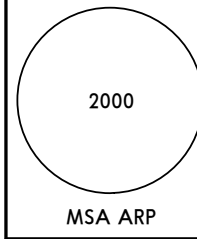


Apt Elev  
648'

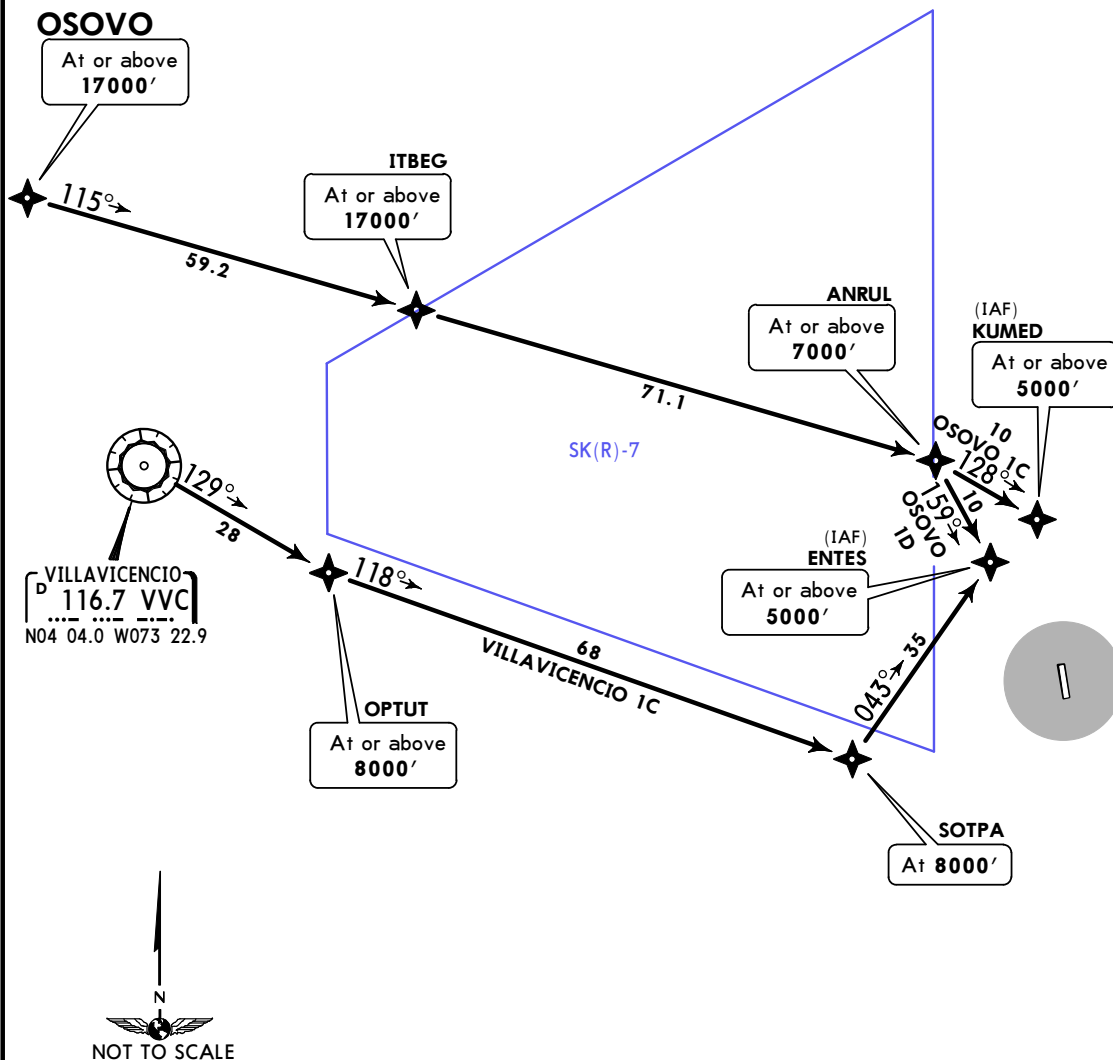
Alt Set: IN (hPa on req) Trans level: FL190 Trans alt: 18000'  
 1. RNAV 1 certification required. 2. GNSS only.  
 3. Area SK(R)-7 administrated and controlled by Colombian Air Force.

OSOVO 1C [OSOV1C]  
 OSOVO 1D [OSOV1D]  
 VILLAVICENCIO 1C [VVC1C]  
 RNAV (GNSS) ARRIVALS  
 (RWY 18)

CAT A, B & C



Entry SK(R)-7 is authorized by the Head of Air Operations (JOA)/civil and commercial Colombian aviation aircraft are authorized prior coordination with the Fighter Air command Number 2 CACOM-2, after meeting the requirements established by the air force provided in AIC 08/2008 and prior coordination before the estimated time of departure with CACOM-2 tel 098-5616412 ext 1436 indicating registration, routing, JOA authorization number and estimated time of entry to the area.

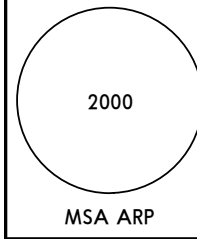


Apt Elev  
**648'**

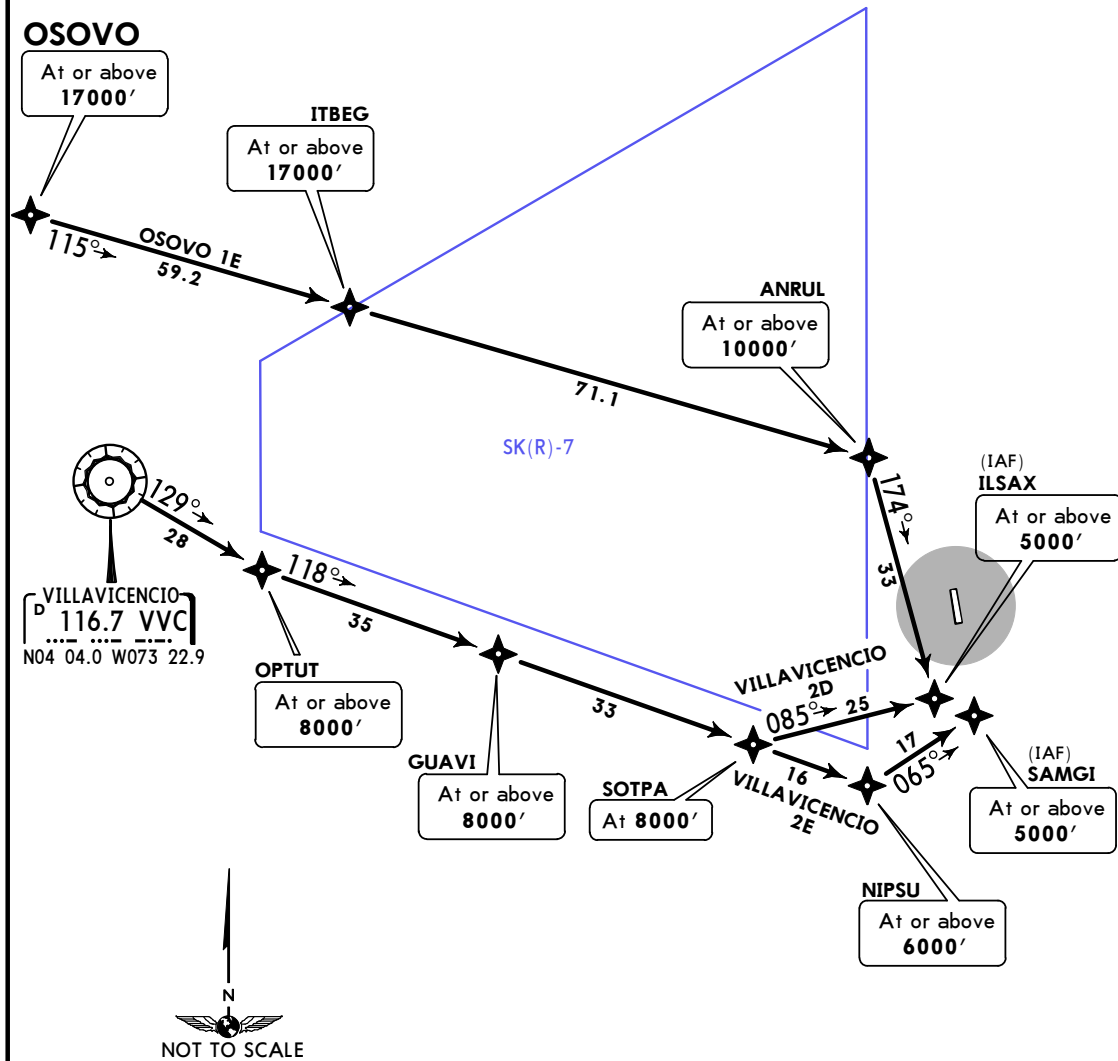
Alt Set: IN (hPa on req) Trans level: FL190 Trans alt: 18000'  
1. RNP1 or RNAV1 required. 2. GNSS required.  
3. Area SK(R)-7 administrated and controlled by Colombian Air Force.

**OSOVO 1E [OSOV1E]  
VILLAVICENCIO 2D [VVC2D]  
VILLAVICENCIO 2E [VVC2E]  
RNAV (GNSS) ARRIVALS  
(RWY 36)**

**CAT A, B & C**

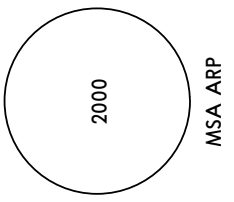


Entry SK(R)-7 is authorized by the Head of Air Operations (JOA)/civil and commercial Colombian aviation aircraft are authorized prior coordination with the Fighter Air command Number 2 CACOM-2, after meeting the requirements established by the air force provided in AIC 08/2008 and prior coordination before the estimated time of departure with CACOM-2 tel 098-5616412 ext 1436 indicating registration, routing, JOA authorization number and estimated time of entry to the area.



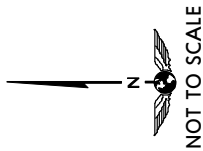
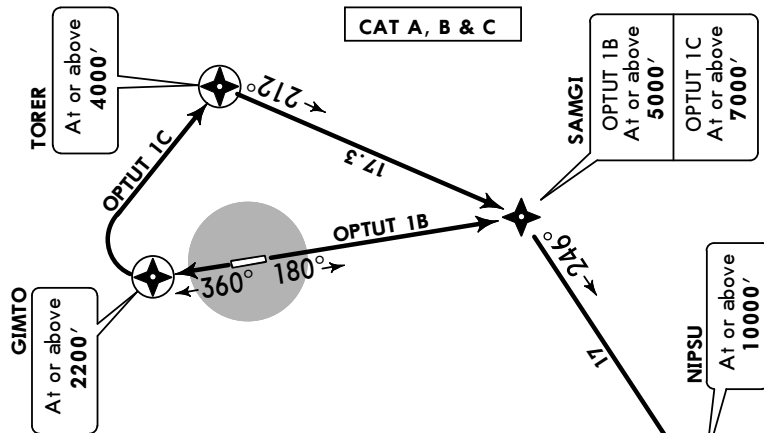
Apt Elev  
648'

Trans level: FL190 Trans alt: 18000'  
 1. RNP1 or RNAV1 required. 2. GNSS required.  
 3. Area SK(R)-7 administrated and controlled by Colombian Air Force.

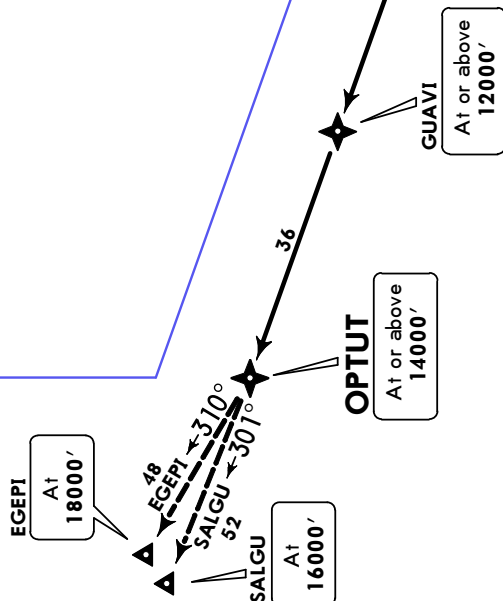


**OPTUT 1B [OPTU1B] RNAV (GNSS) DEPARTURE (RWY 18)**  
**OPTUT 1C [OPTU1C] RNAV (GNSS) DEPARTURE (RWY 36)**

CAT A, B & C



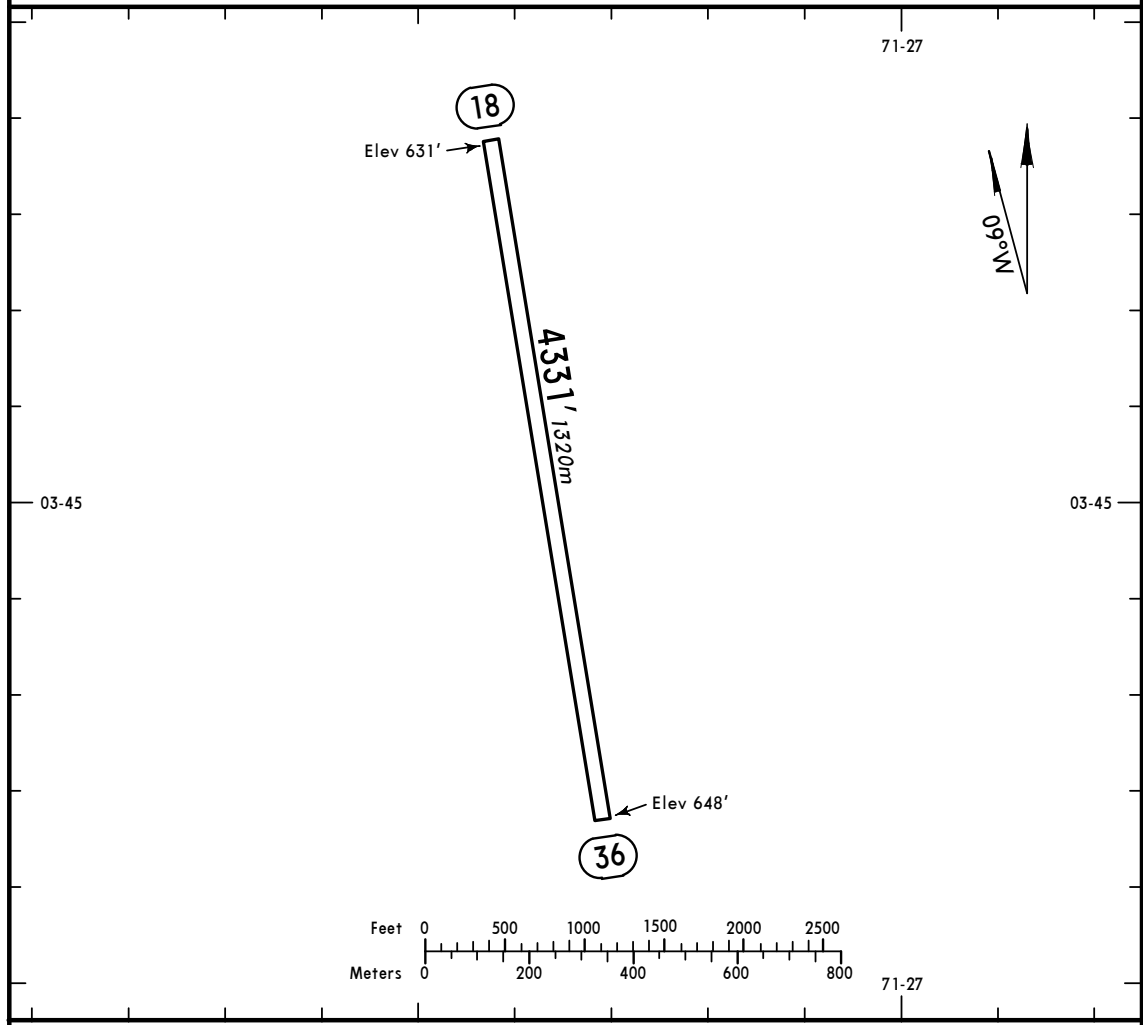
SK(R)-7



These SIDs require a minimum climb gradient of 5.0% (305' per NM) to 10000'.

Gnd speed-KT	75	100	150	200	250	300
5.0% V/V (fpm)	380	506	760	1013	1266	1519

\*VILLAVICENCIO Approach 127.0



ADDITIONAL RUNWAY INFORMATION

RWY	USABLE LENGTHS			WIDTH
	Threshold	Landing Beyond Glide Slope	TAKE-OFF	
18 36				98' 30m

TAKE-OFF	
	All Rwys
1 or More Eng	1600m
3 or More Eng	800m

SKMO  
MORELIA

**JEPPESEN**  
9 MAY 14 (12-1)

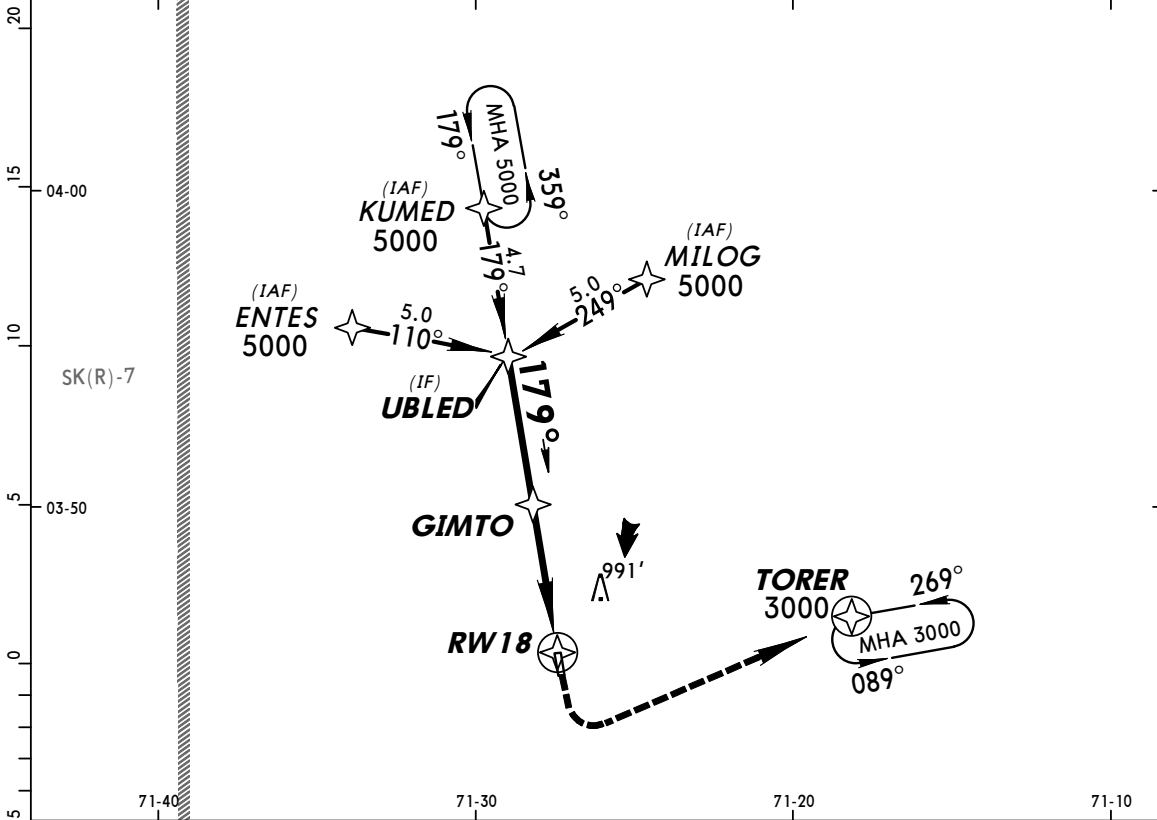
MISSED APCH CLIMB  
GRADIENT MIM 3.0%

**PUERTO GAITAN, COLOMBIA**  
CAT A, B & C RNAV (GNSS) Rwy 18

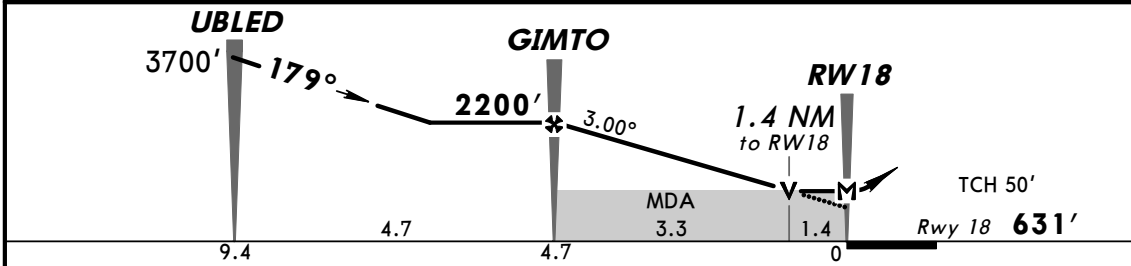
\*VILLAVICENCIO Approach 127.0

BRIEFING STRIP™

RNAV	Final Apch Crs <b>179°</b>	Minimum Alt <b>GIMTO</b> <b>2200'</b> (1569')	LNAV MDA(H) (CONDITIONAL) <b>1120'</b> (489')	Apt Elev <b>648'</b> Rwy 18 <b>631'</b>	2000'  MSA ARP
MISSED APCH: Turn LEFT climbing to TORER and hold at 3000'.					
Alt Set: IN (hPa on req) Trans level: FL 190 Trans alt: 18000' 1. Certification RNP APCH required. 2. Turns prohibited before MAP.					



DIST to THR	7.0	6.0	5.0	4.0	3.0	2.0	1.4
ALTITUDE	2909'	2591'	2273'	1955'	1636'	1318'	1120'



Gnd speed-Kts	70	90	100	120	140	160
Descent Angle	3.00°	372	478	531	637	849
MAP at RW18						

← TORER

STRAIGHT-IN LANDING RWY 18 MISSED APCH CLIMB GRADIENT MIM 3.0%			CIRCLE-TO-LAND		
LNAV					
DAY		NIGHT	DAY		NIGHT
MDA(H) <b>1120'</b> (489')			MDA(H)		
A	2400m	NA	100	1290' (642') - 3700m	
B			135		
C	2800m		180	1390' (742') - 4600m	
D	NOT APPLICABLE		D	NOT APPLICABLE	

PANS OPS

CHANGES: Briefing strip.

© JEPPESEN, 2014. ALL RIGHTS RESERVED.

SKMO  
MORELIA

JEPPESEN  
9 MAY 14 (12-2)

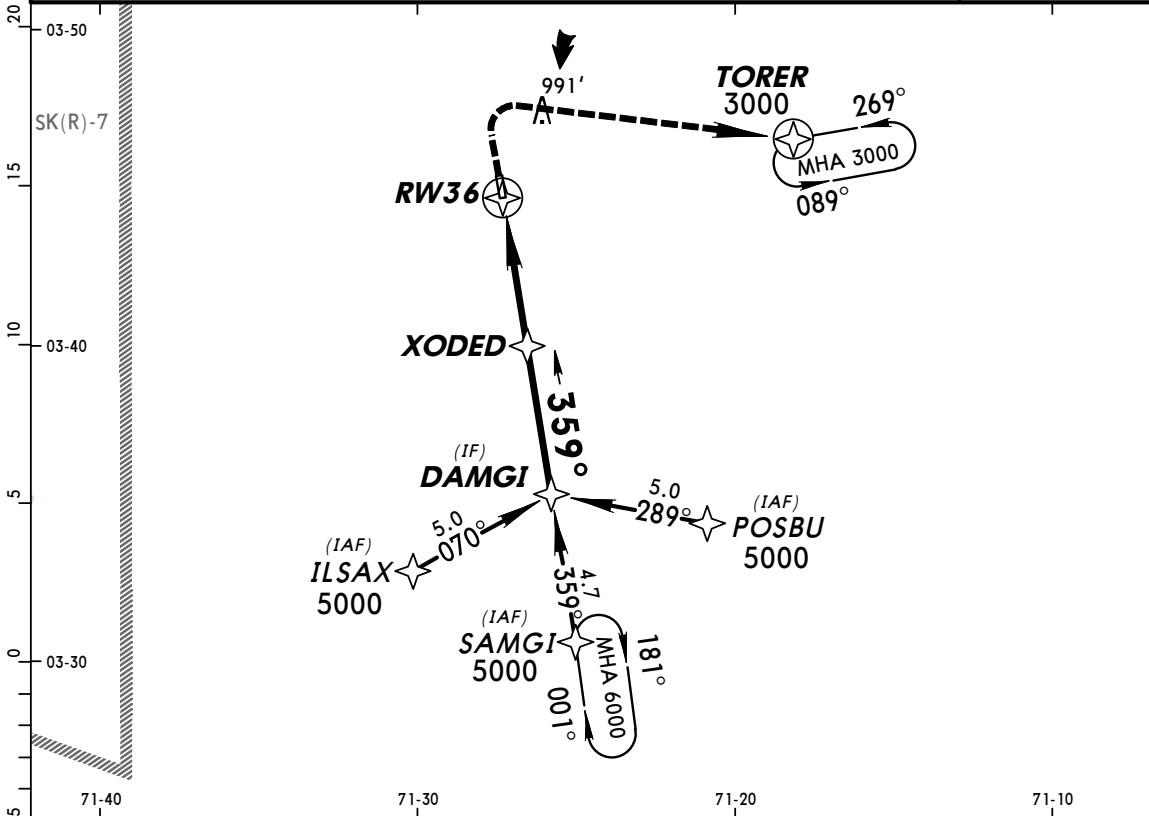
MISSED APCH CLIMB  
GRADIENT MIM 3.0%

PUERTO GAITAN, COLOMBIA  
CAT A, B & C RNAV (GNSS) Rwy 36

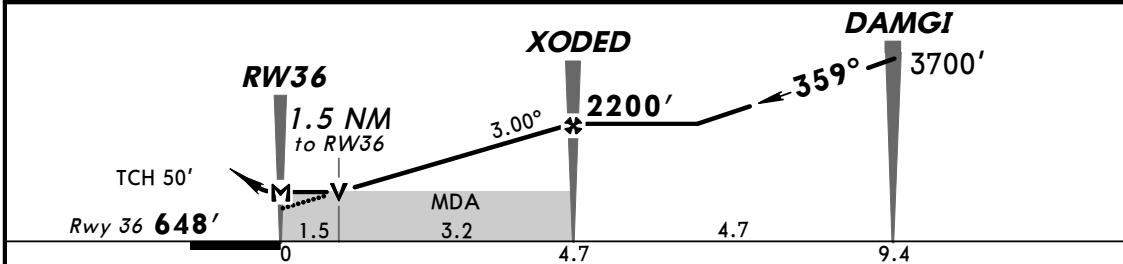
\*VILLAVICENCIO Approach 127.0

BRIEFING STRIP™

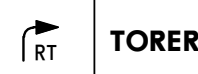
RNAV	Final Apch Crs <b>359°</b>	Minimum Alt <b>XODED</b> <b>2200'</b> (1552')	LNAV MDA(H) (CONDITIONAL) <b>1160'</b> (512')	Apt Elev <b>648'</b> Rwy 36 <b>648'</b>	2000'  MSA ARP
MISSED APCH: Turn RIGHT climbing to TORER holding pattern at 3000'.					
Alt Set: IN (hPa on req)		Trans level: FL 190		Trans alt: 18000'	
1. Certification RNP APCH required.					



DIST to THR	1.4	2.0	3.0	4.0	5.0	6.0	7.0
ALTITUDE	1160'	1335'	1653'	1971'	2290'	2608'	2927'



Gnd speed-Kts	70	90	100	120	140	160	
Descent Angle	3.00°	372	478	531	637	743	849
MAP at RW36							



PANS OPS	STRAIGHT-IN LANDING RWY 36 MISSED APCH CLIMB GRADIENT MIM 3.0% LNAV		CIRCLE-TO-LAND
	DAY	NIGHT	
A	MDA(H) <b>1160'</b> (512')		DAY: 1290' (642') - 3700m NIGHT: NA
B	2400m	NA	1290' (642') - 3700m
C	2800m	NA	1390' (742') - 4600m
D	NOT APPLICABLE	NA	NOT APPLICABLE

CHANGES: Profile.

© JEPPESEN, 2014. ALL RIGHTS RESERVED.