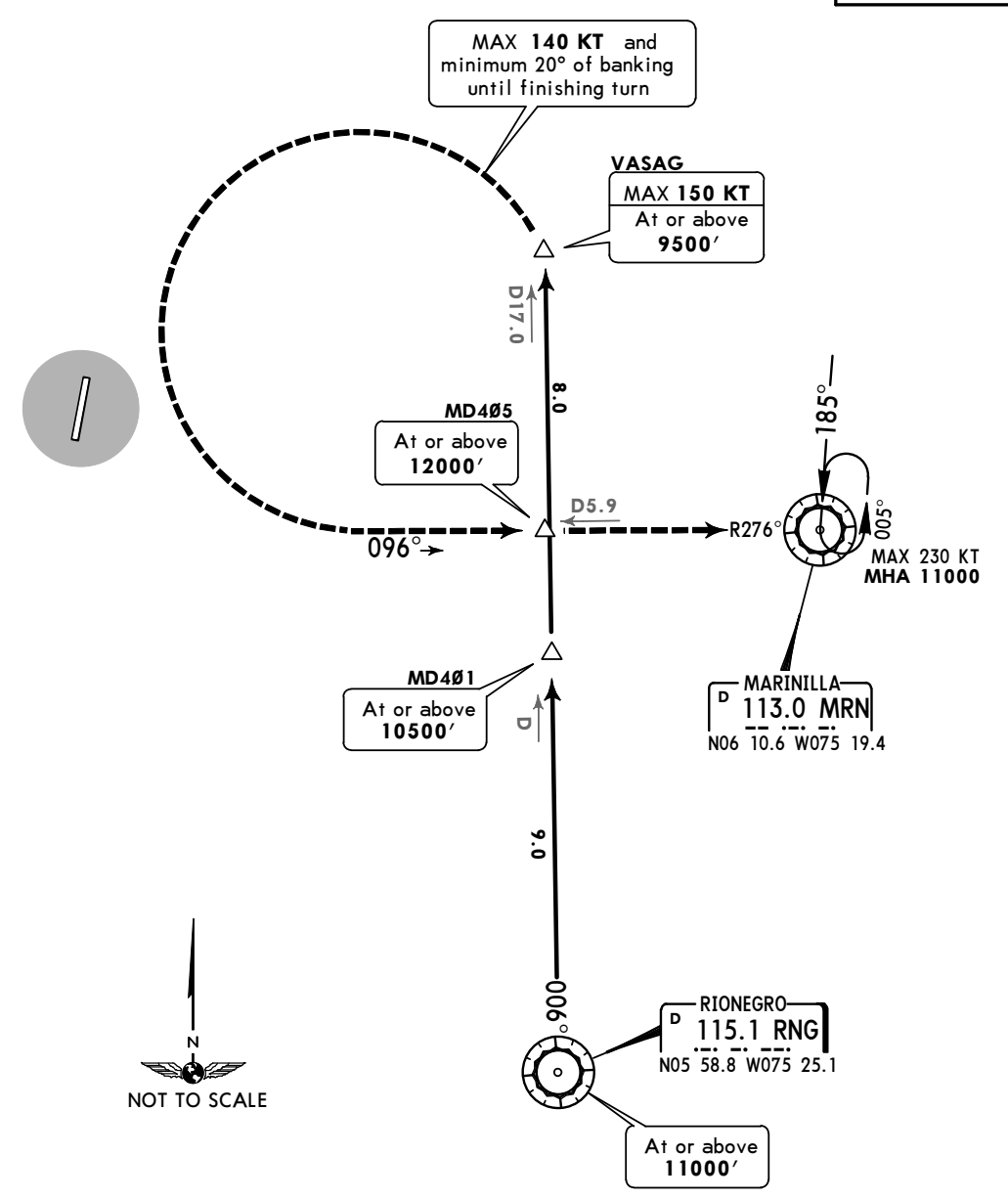
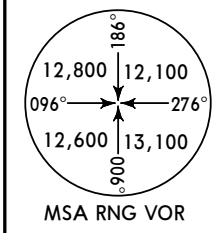


Apt Elev 4921' Alt Set: IN (hPa on req) Trans level: FL190 Trans alt: 18000'
1. MRN VOR/DME required.
2. RNG VOR/DME required.

RIONEGRO 1E ARRIVAL
(ALL RWYS)

CAT A & B



This STAR requires a minimum climb gradient of 4.5% after crossing VASAG until 12000' or above.

Gnd speed-KT	75	100	150	200	250	300
4.5% V/V (fpm)	342	456	684	911	1139	1367

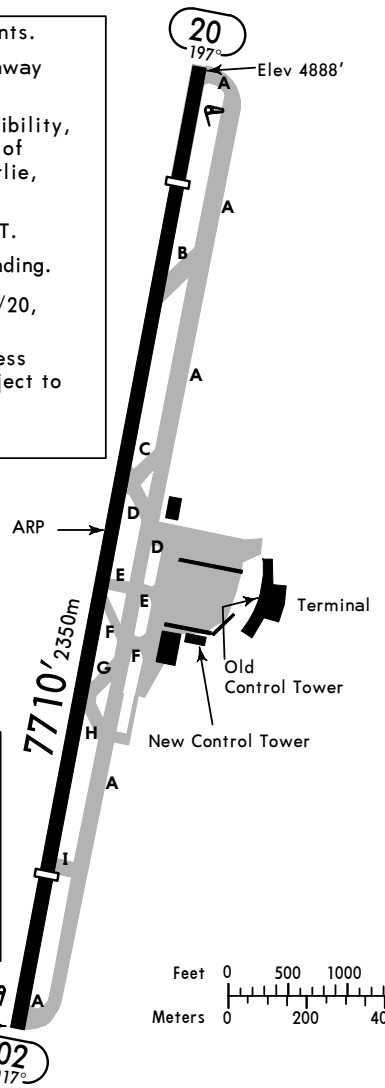
ROUTING

Crossing VASAG turn LEFT and continue until intercepting MRN R-276.

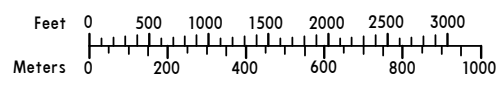
ATIS	*AWOS	*OLAYA HERRERA Ground	*Tower	
115.1	127.825	121.9	118.9	121.75

75-36

CAUTION: Mountainous area in all quadrants.
 CAUTION: Machinery and personnel on runway strips due to spray works.
 Due to presence of trees that obstruct visibility, the ATS is not responsible for the control of Twy Alfa between Twy Bravo and Twy Charlie, exercise caution.
 Max speed restriction in the circuit 150 KT.
 Concentration of birds on take-off and landing.
 Obstacles erected on approach runway 02/20, exercise caution.
 The use of platform for general and business aviation is limited, parking positions subject to availability.
 Rotating beacon.



RWY	INTERSECTION	TORA
02	GOLF	4429' (1350m)
	FOXTROT	3576' (1090m)
	ECHO	3576' (1090m)



ADDITIONAL RUNWAY INFORMATION

RWY	REIL	LANDING BEYOND		TAKE-OFF	WIDTH
		Threshold	Glide Slope		
02	RL REIL	5906' 1800m		7054' 2150m	115' 35m
20				NA	

TAKE-OFF

All Rwys

Standard

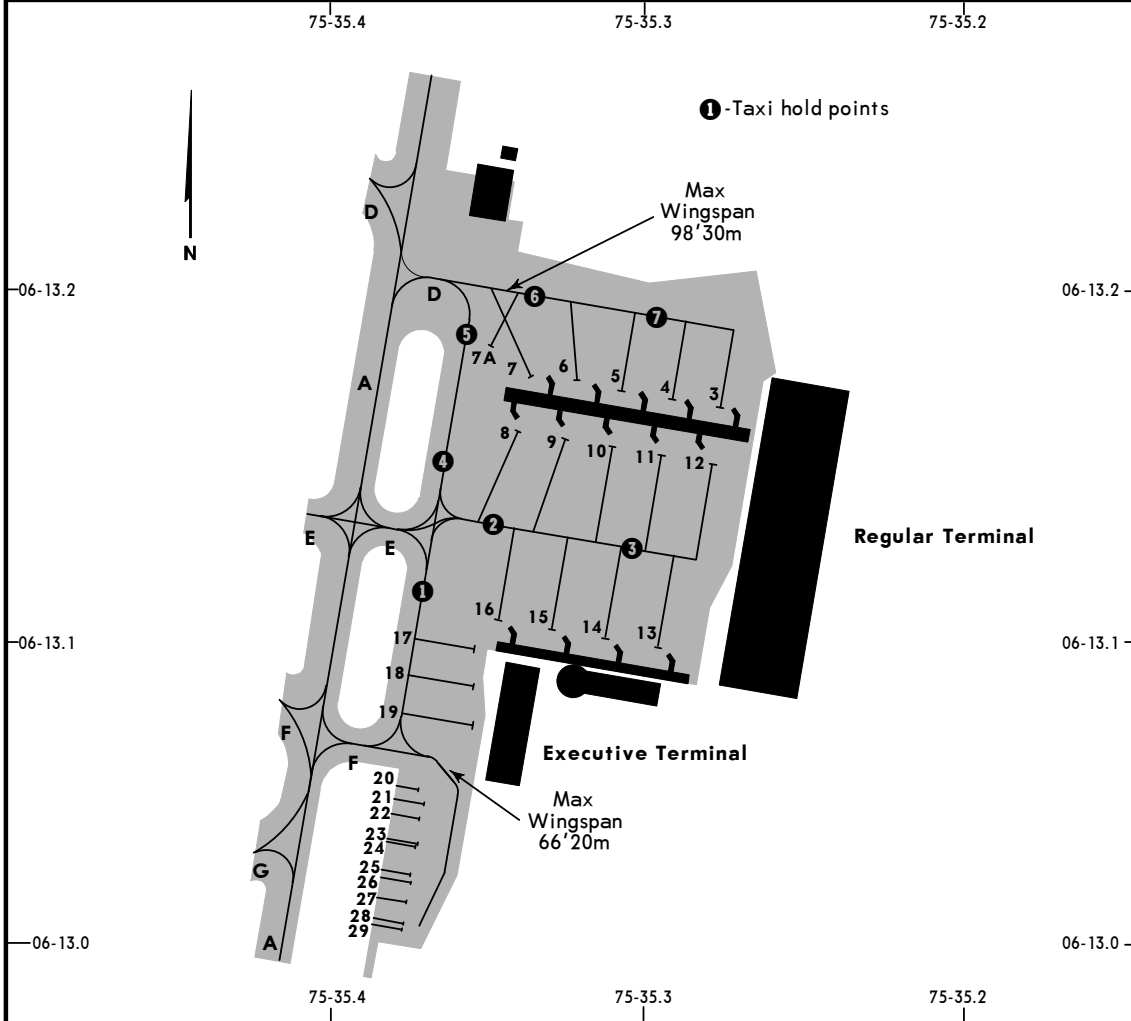
1 & 2 Eng

3 & 4 Eng

1600m

800m

In the aircraft stands, aircraft will be parked with the nose to the passenger terminal building.
 Movement with own power of parking stands is prohibited.
 Start engines when acft is positioned in marked points designated on the apron.
 Aircraft cannot park outside the demarcated aircraft stands.



PARKING SPOT COORDINATES

SPOT NO.	COORDINATES
3 thru 11	N06 13.2 W075 35.3
12 thru 18	N06 13.1 W075 35.3
19	N06 13.1 W075 35.4
20 thru 29	N06 13.0 W075 35.4

SKMD/EOH
OLAYA HERRERA

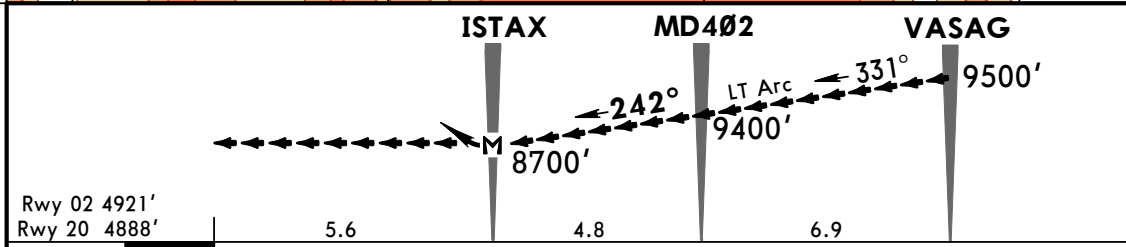
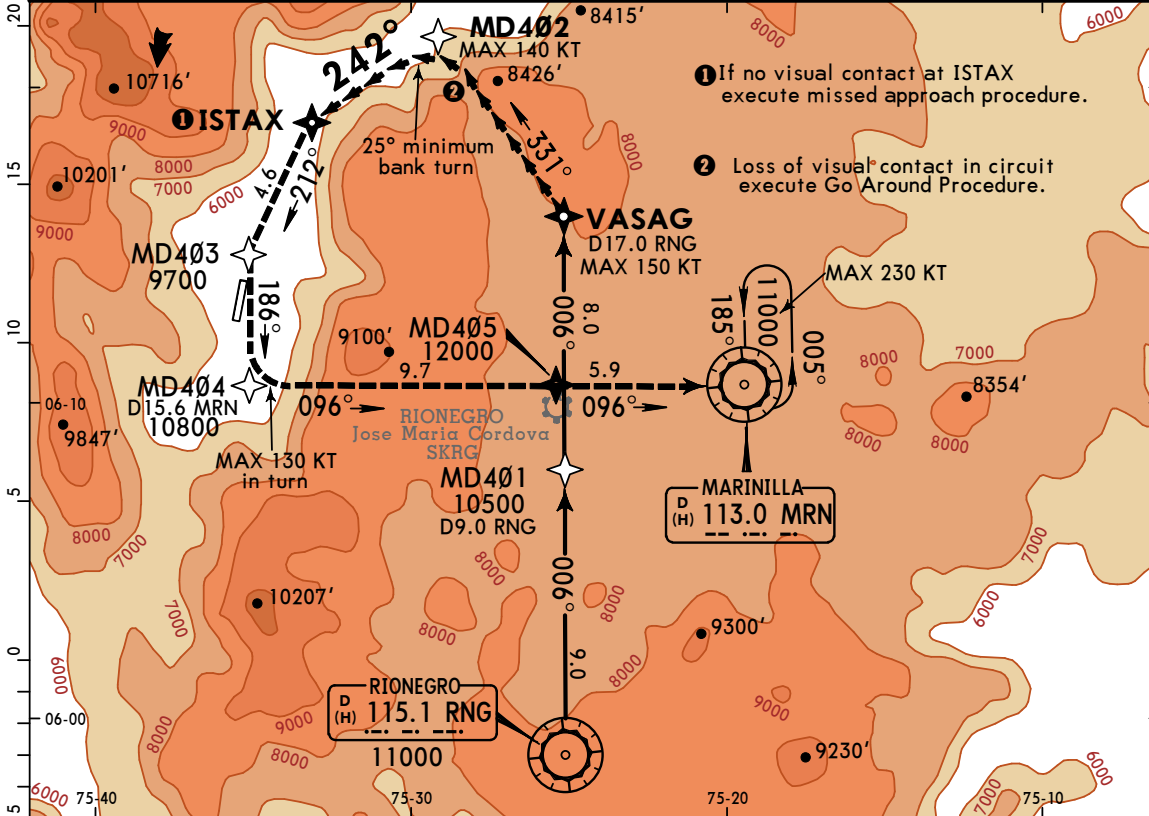
19 APR 19
Eff 25 Apr (12-1)
MISSED APCH CLIMB
GRADIENT MIM 4.5%

MEDELLIN, COLOMBIA
RNAV VISUAL FLIGHT PROCEDURE
(GNSS) V Rwy 02/20

JEPPESEN

CAT A & B

BRIEFING STRIP™	ATIS 115.1	*AWOS 127.825	*MEDELLIN Approach 121.1	*OLAYA HERRERA Tower 118.9 121.75	*Ground 121.9
	RNAV	Final Apch Crs 242°	Minimum Alt VASAG 9500' (4579')	MDA(H) 8700' (3779')	Apt Elev 4921' Rwy 02 4921' Rwy 20 4888'
<p>MISSED APCH: Maintain on RVFP track climbing with minimum gradient 4.5% until reaching 12000' or above, after turn maintain heading to MRN VOR holding and expect ATC instructions. MAX IAS 130 kt until end of turn.</p> <p>Alt Set: IN (hPa on req) Trans level: FL 190 Trans alt: 18000'</p> <p>RNP Apch Certification required.</p> <p>1. CAUTION: Mountainous terrain all quadrants and terrain West of aerodrome up to 9000' or higher. 2. Circle only to the East. 3. Go Around Procedure: Expect ATC instructions.</p>					
<p>MSA RING VOR</p>					



MAP at ISTAX	REIL	12000'	via	RVFP track	MRN 113.0
--------------	------	--------	-----	------------	-----------

STRAIGHT-IN LANDING RWY 02/20
Missed Apch climb gradient mim 4.5%
MDA(H) **8700'** (3779')

PANS OPS	A	
	B	6000m