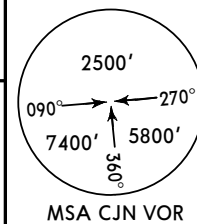


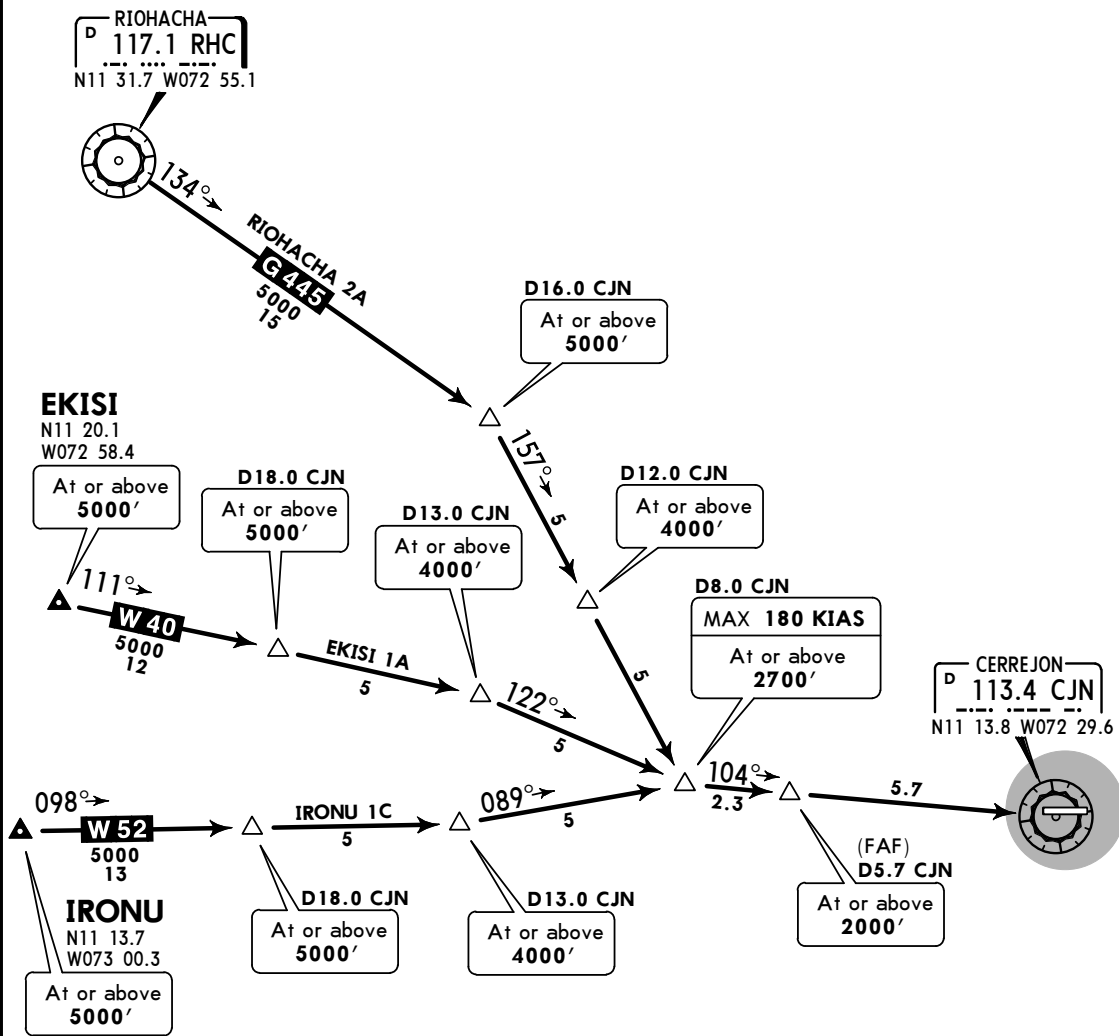
Apt Elev
339'

Alt Set: IN (hPa on request)
Trans level: FL190 Trans alt: 18000'
CJN VOR/DME required.



EKISI 1A (EKISI 1A) [EKIS1A]
IRONU 1C (IRONU 1C) [IRON1C]
RIOHACHA 2A (RHC 2A) [RHC2A]
(RWY 10)

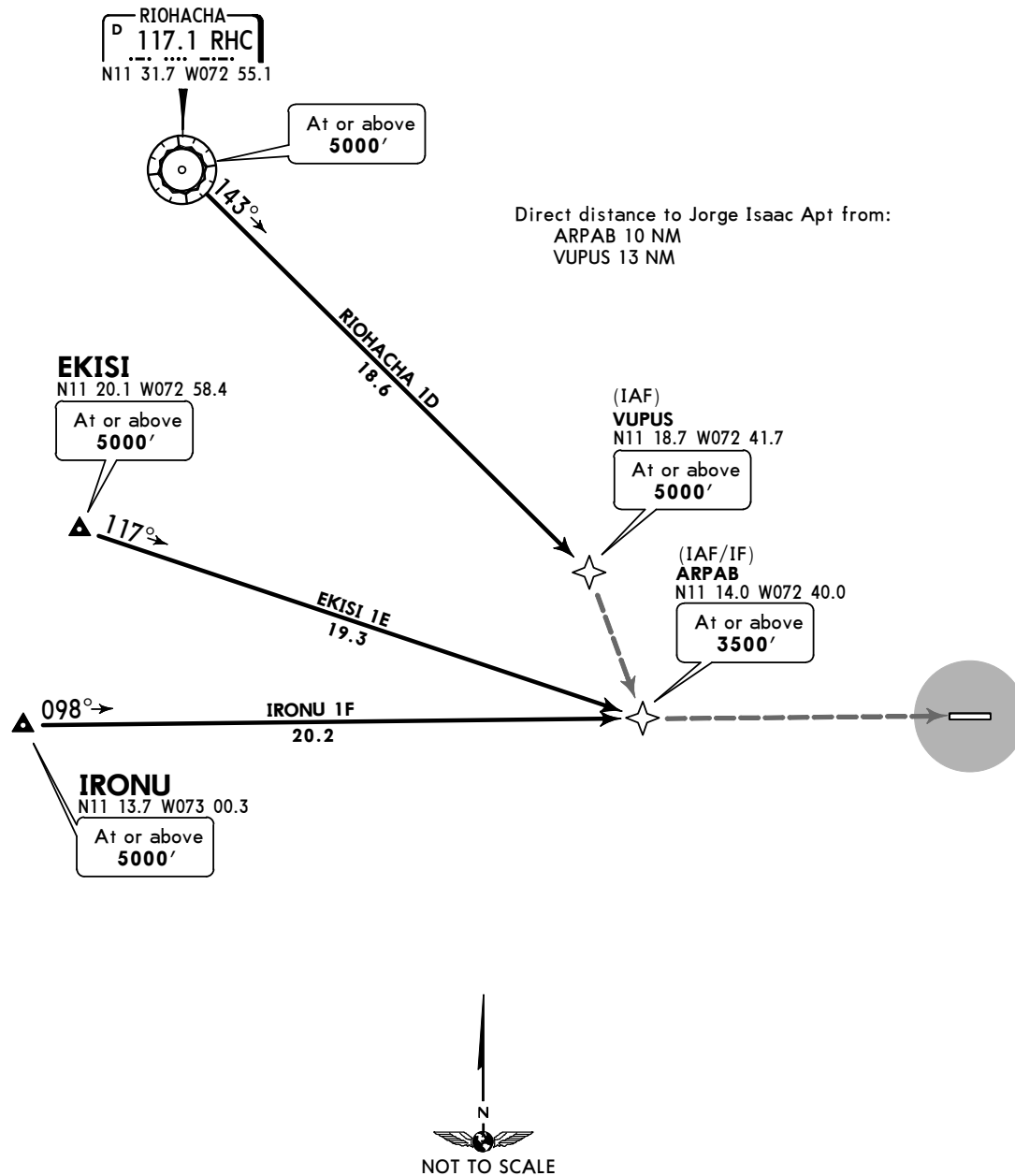
CAT A, B & C



Apt Elev
339'

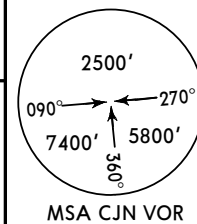
Alt Set: IN (hPa on request)
Trans level: FL190 Trans alt: 18000'

EKISI 1E (EKISI 1E) [EKIS1E]
IRONU 1F (IRONU 1F) [IRON1F]
RIOHACHA 1D (RHC 1D) [RHC1D]
RNAV
(RWY 10)
CAT A, B & C



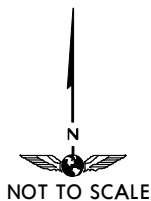
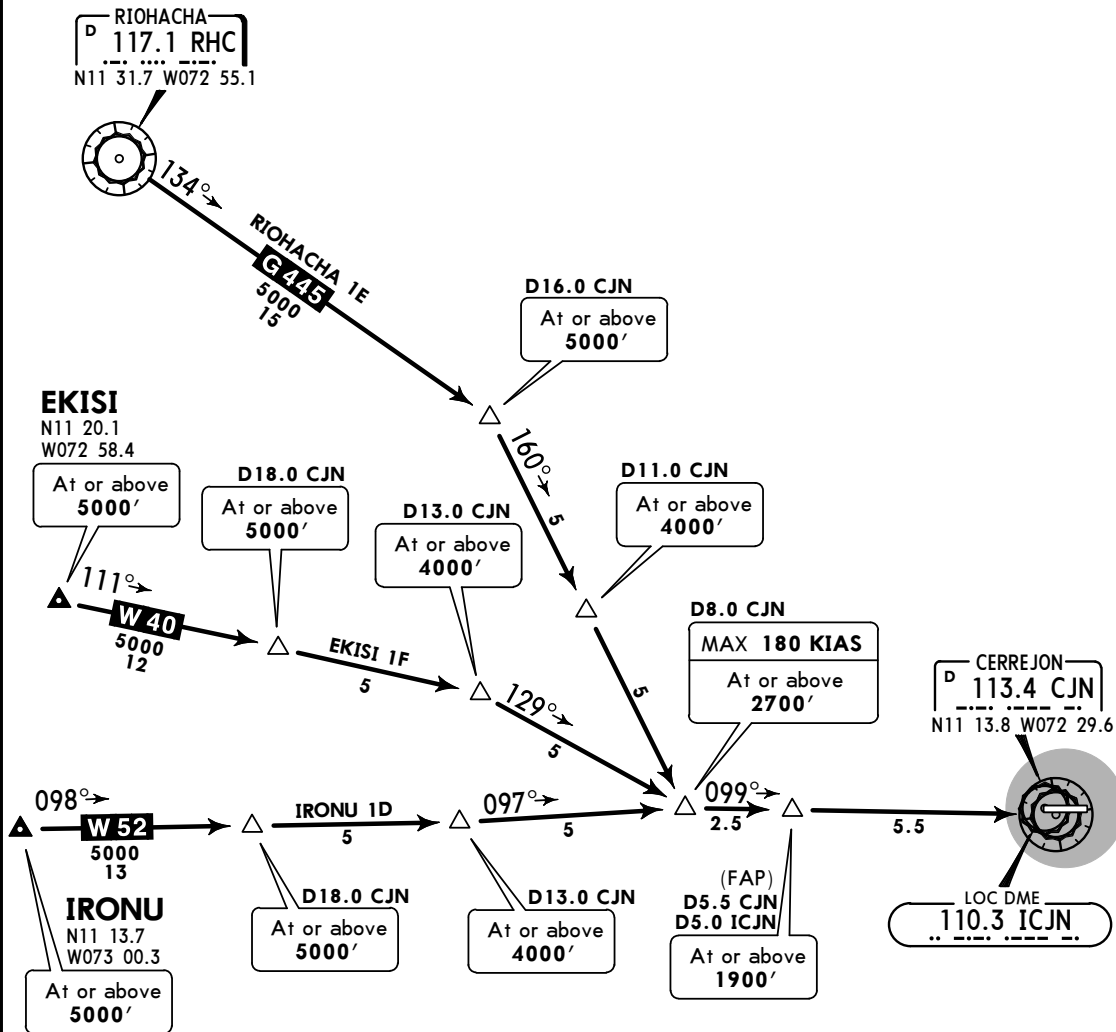
Apt Elev
339'

Alt Set: IN (hPa on request)
Trans level: FL190 Trans alt: 18000'
CJN VOR/DME required.



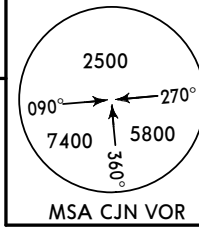
EKISI 1F (EKISI 1F) [EKIS1F]
IRONU 1D (IRONU 1D) [IRON1D]
RIOHACHA 1E (RHC 1E) [RHC1E]
(RWY 10)

CAT A, B & C



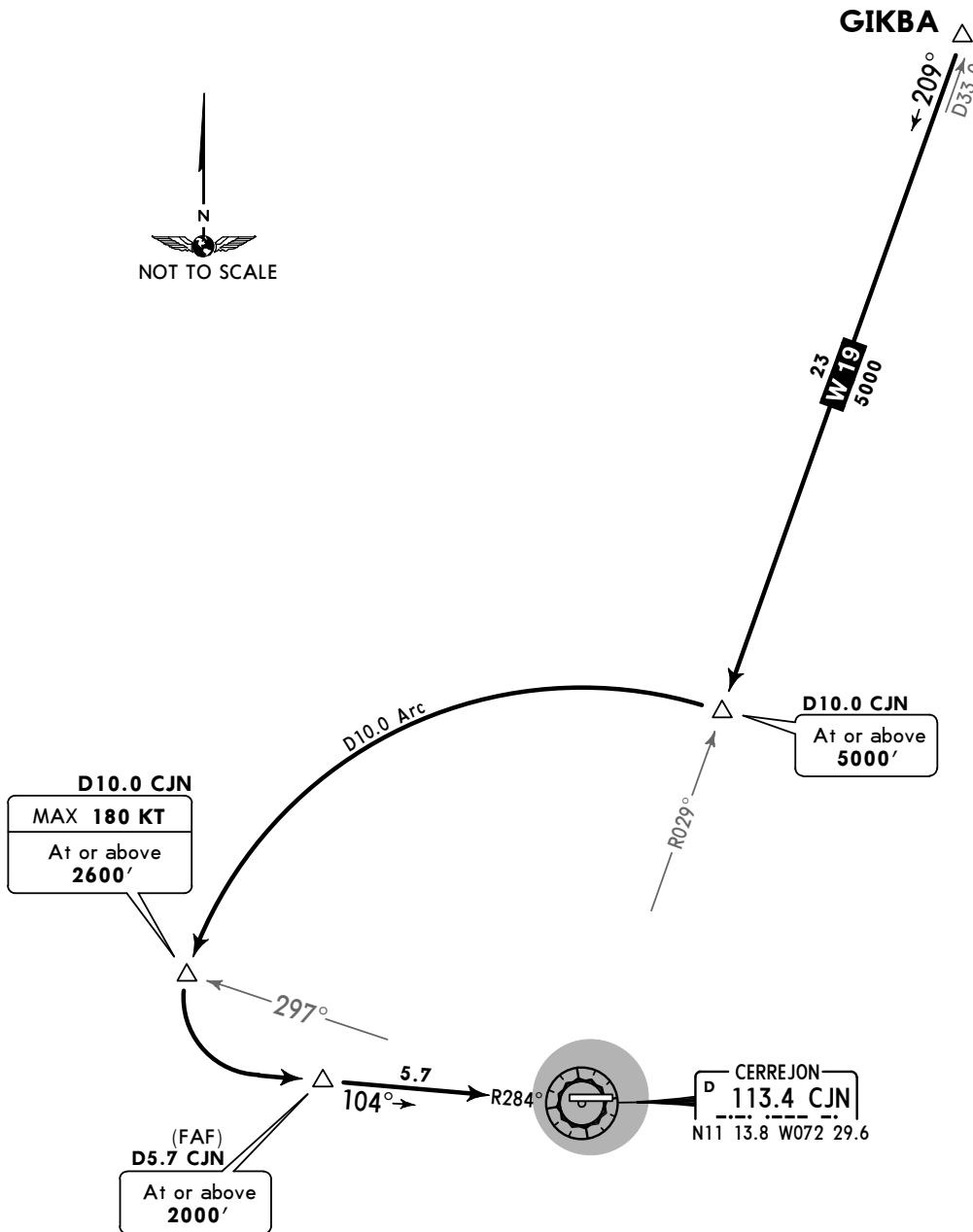
Apt Elev
339'

Alt Set: IN (hPa on request)
Trans level: FL190 Trans alt: 18000'
CJN VOR/DME required.



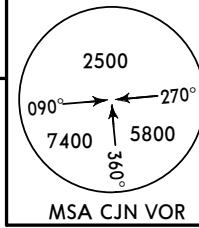
**GIKBA 1D [GIKB1D]
RWY 10 ARRIVAL**

CAT A, B & C



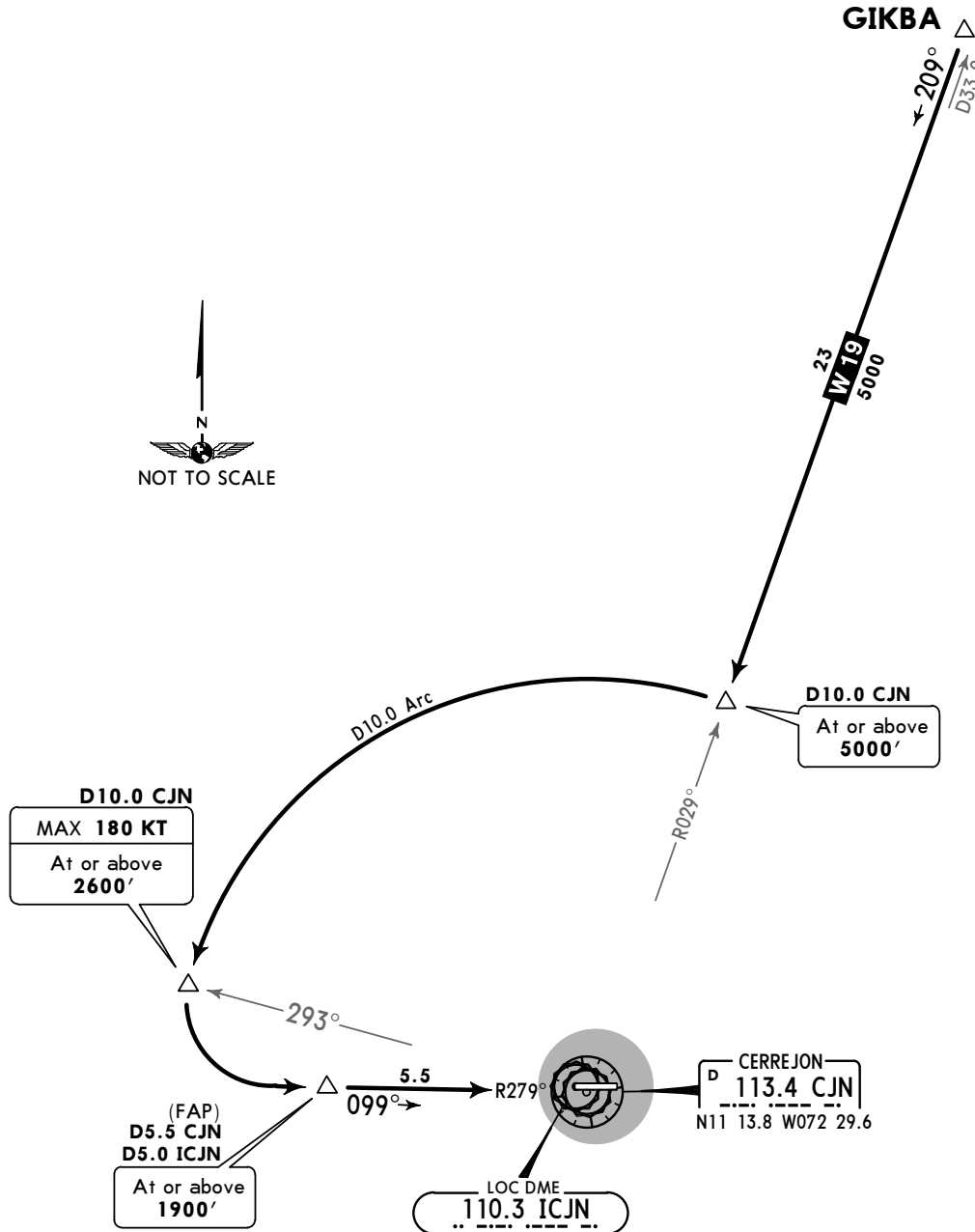
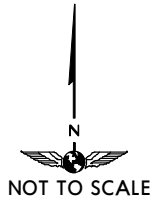
Apt Elev
339'

Alt Set: IN (hPa on request)
Trans level: FL190 Trans alt: 18000'
CJN VOR/DME required.



GIKBA 1E [GIKB1E] RWY 10 ARRIVAL

CAT A, B & C

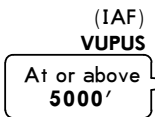
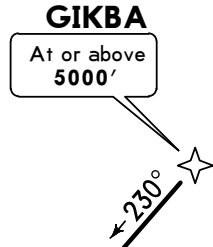


Apt Elev
339'

Alt Set: IN (hPa on request) Trans level: FL190 Trans alt: 18000'
1. RNP 1 or RNAV 1.
2. GNSS required.

GIKBA 1F [GIKB1F]
RWY 10 ARRIVAL

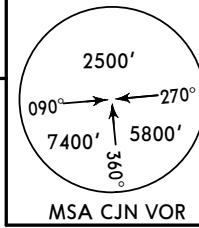
CAT A, B & C



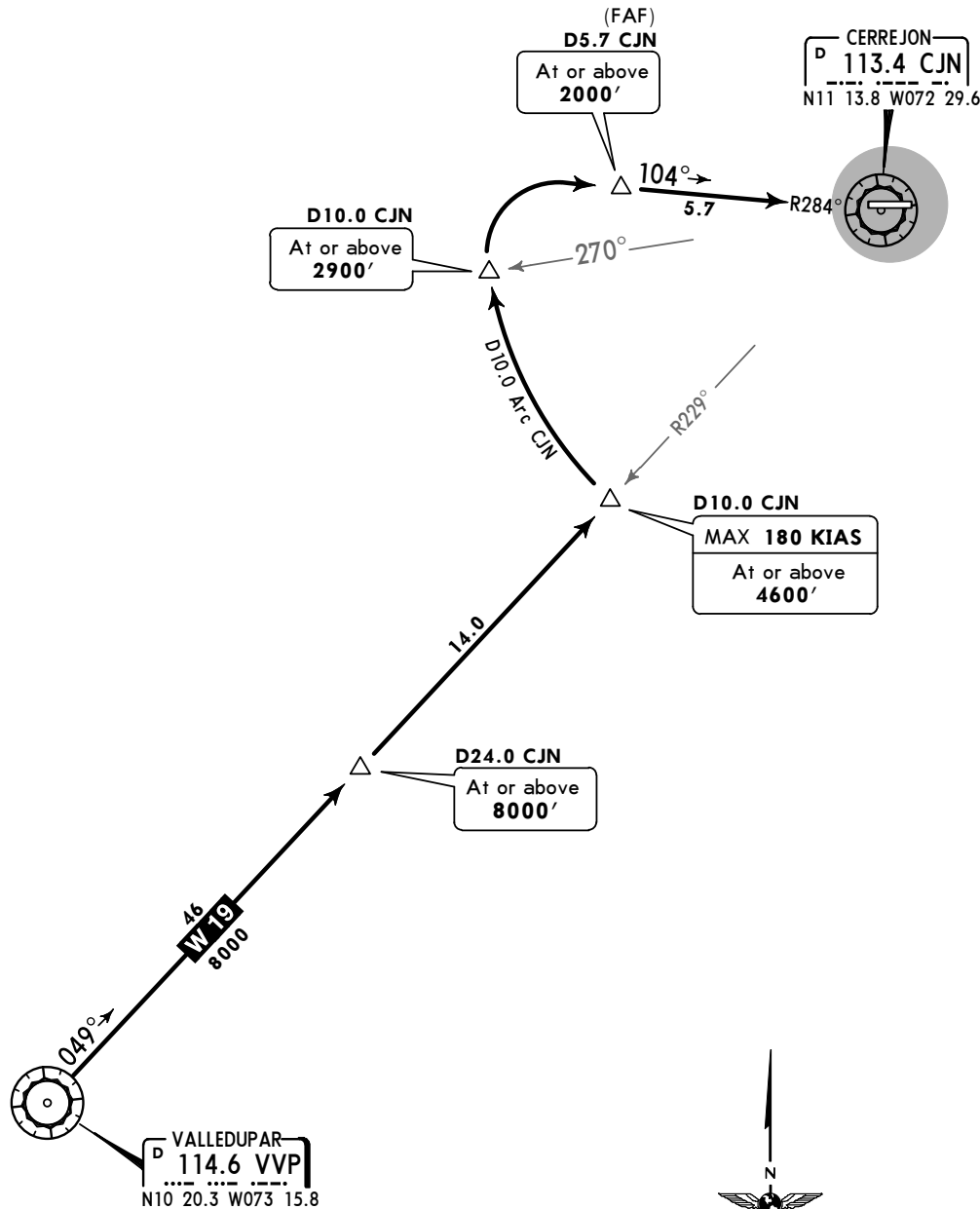
35

Apt Elev
339'

Alt Set: IN (hPa on request)
Trans level: FL190 Trans alt: 18000'
CJN VOR/DME required.

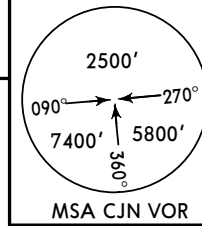


VALLEDUPAR 2C (VVP 2C)
(RWY 10)
CAT A, B & C

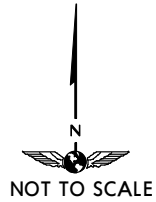
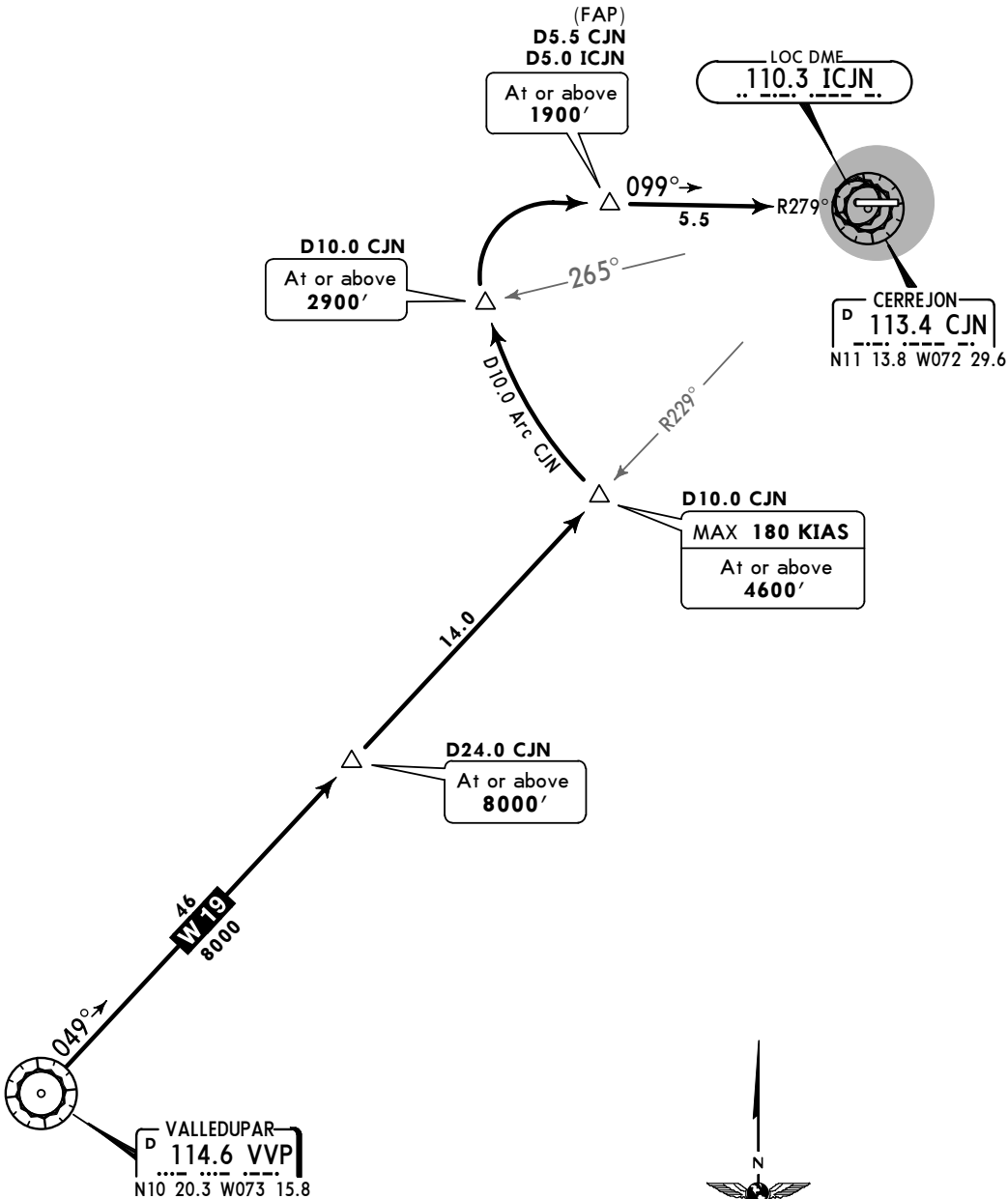


Apt Elev
339'

Alt Set: IN (hPa on request)
Trans level: FL190 Trans alt: 18000'
CJN VOR/DME required.



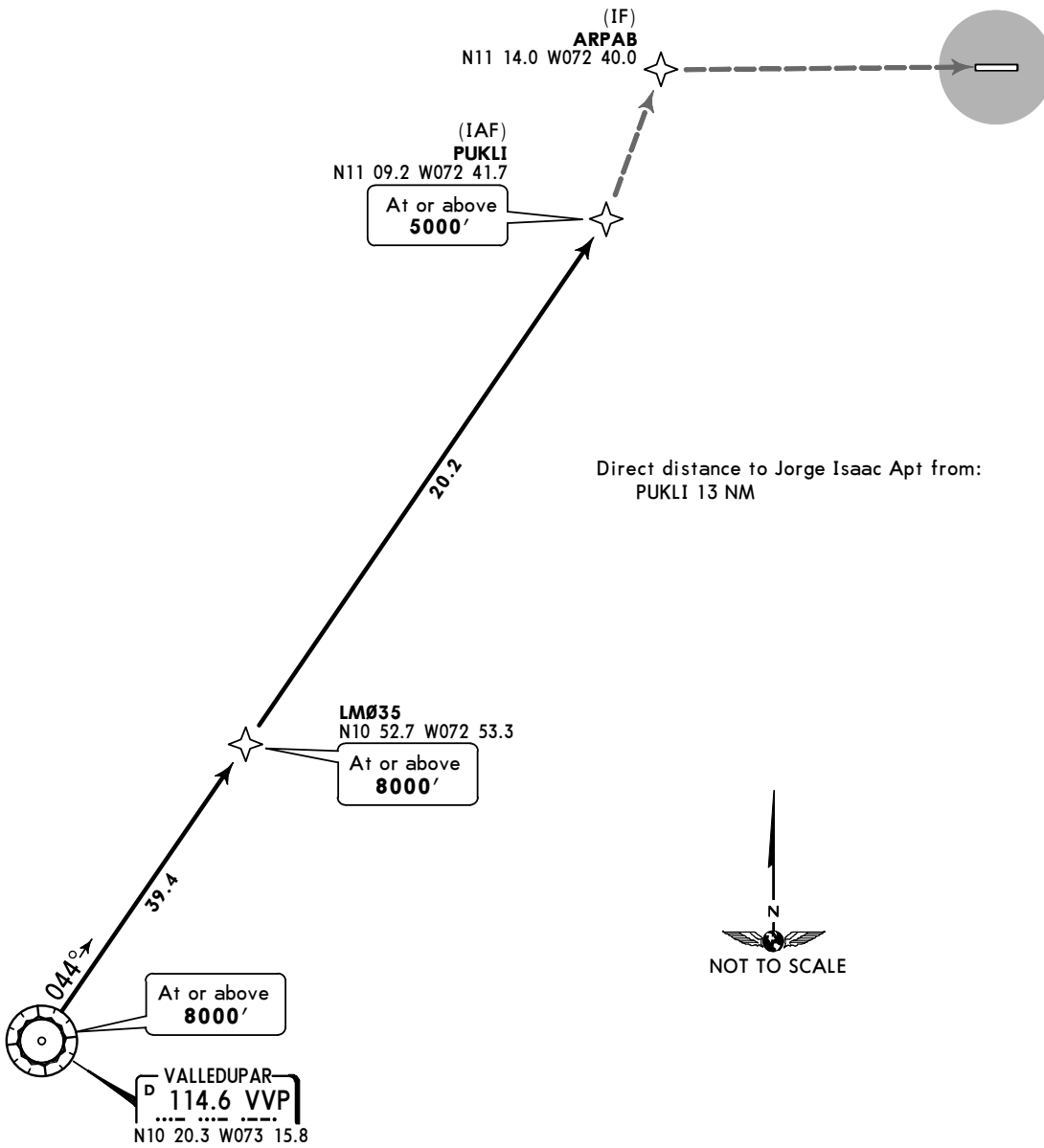
VALLEDUPAR 1F (VVP 1F)
(RWY 10)
CAT A, B & C



Apt Elev
339'

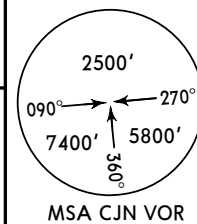
Alt Set: IN (hPa on request)
Trans level: FL190 Trans alt: 18000'
GNSS only.

VALLEDUPAR 1G (VVP 1G) RNAV
(RWY 10)
CAT A, B & C



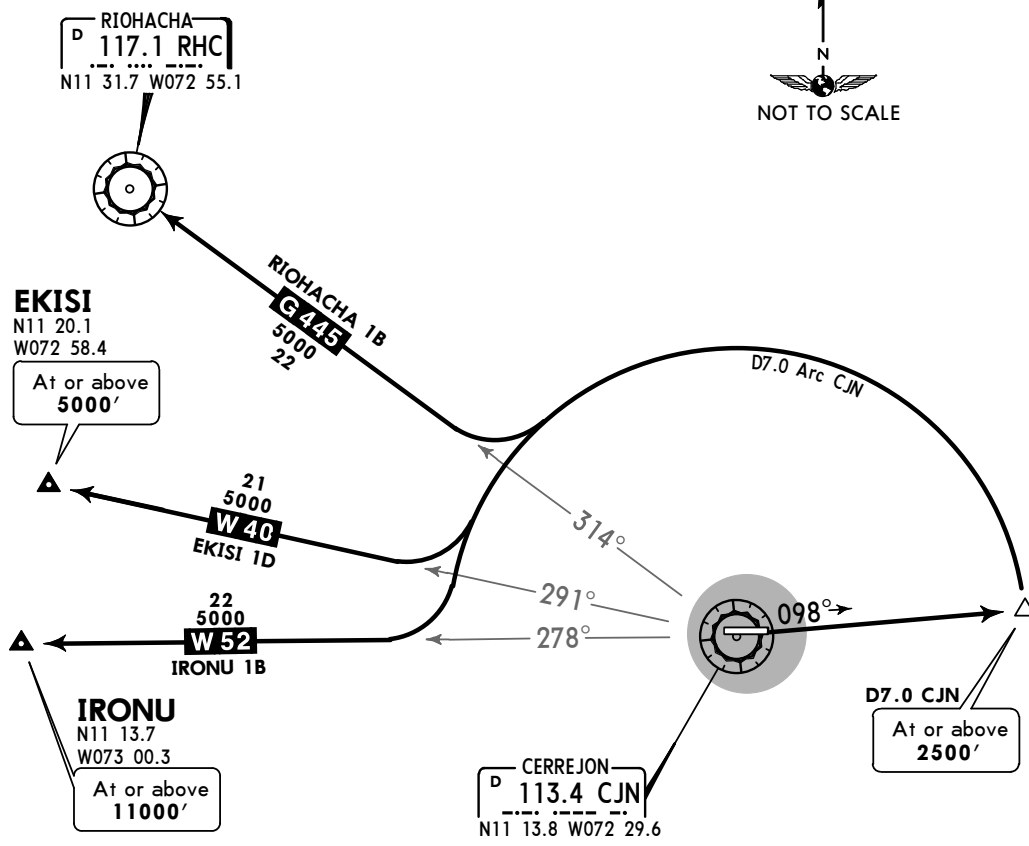
Apt Elev
339'

Trans level: FL190 Trans alt: 18000'



EKISI 1D (EKISI 1D) [EKIS1D]
IRONU 1B (IRONU 1B) [IRON1B]
RIOHACHA 1B (RHC 1B) [RHC1B]
(RWY 10)

CAT A, B & C

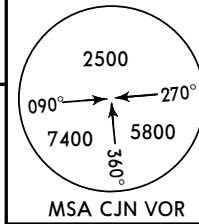


These SIDs require a minimum climb gradient of 5.6% to MEA.

Gnd speed-KT	75	100	150	200	250	300
5.6% V/V (fpm)	425	567	851	1134	1418	1701

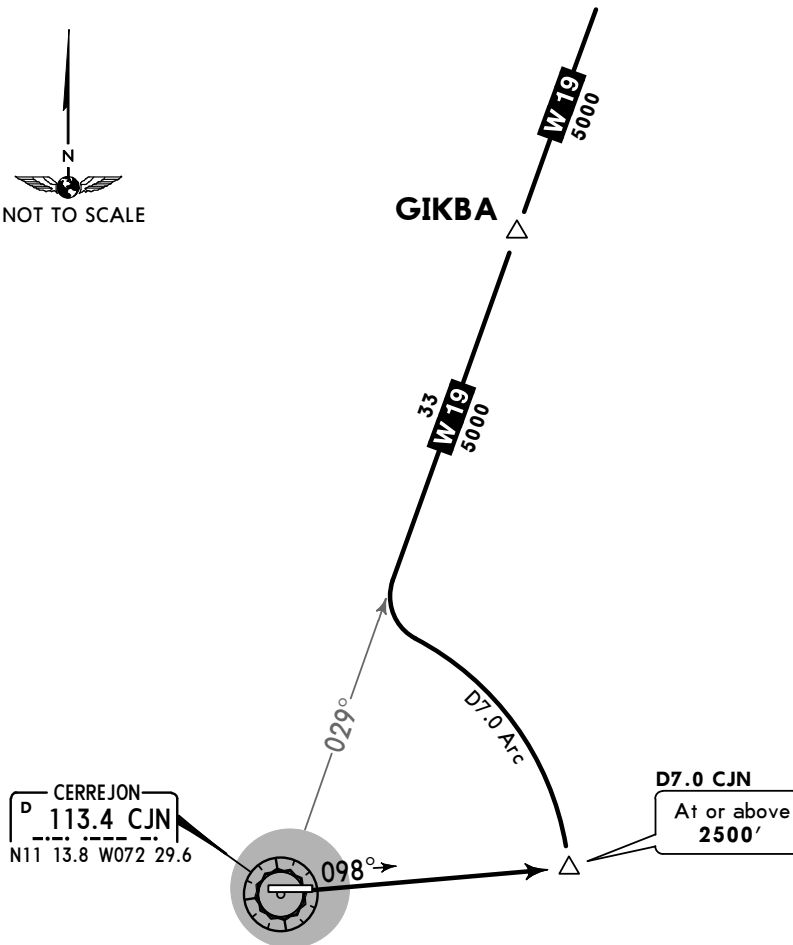
Apt Elev
339'

Trans level: FL190 Trans alt: 18000'



GIKBA 1B [GIKB1B]
RWY 10 DEPARTURE

CAT A, B & C



This SID requires a minimum climb gradient of 5.6% to 5000'.

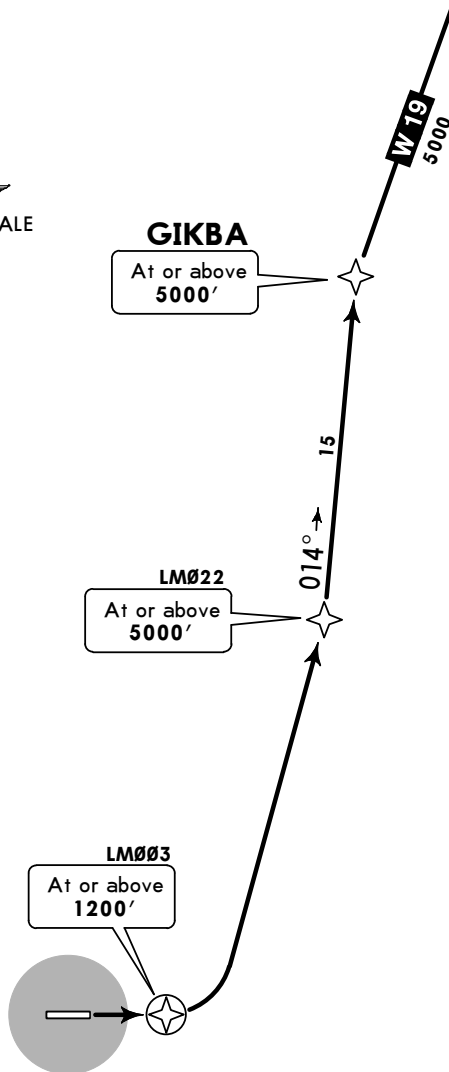
Gnd speed-KT	75	100	150	200	250	300
5.6% V/V (fpm)	425	567	851	1134	1418	1701

Apt Elev
339'

Trans level: FL190 Trans alt: 18000'
1. RNP 1 or RNAV 1.
2. GNSS required.

**GKBA 1C [GKBA1C]
RWY 10 DEPARTURE**

CAT A, B & C



This SID requires a minimum climb gradient of 5.6% to LM022.

Gnd speed-KT	75	100	150	200	250	300
5.6% V/V (fpm)	425	567	851	1134	1418	1701

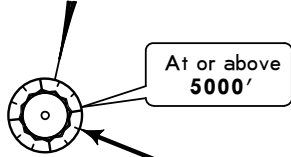
Apt Elev
339'

Trans level: FL190 Trans alt: 18000'

RIOHACHA 1F (RHC 1F)
RWY 10 DEPARTURE

CAT A, B & C

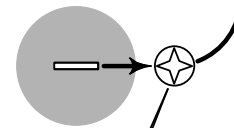
RIOHACHA
D 117.1 RHC
N11 31.7 W072 55.1



21



LM019
At or above
5000'



LM003
At or above
1200'

This SID requires a minimum climb gradient of 5.6% to LM003.

Gnd speed-KT	75	100	150	200	250	300
5.6% V/V (fpm)	425	567	851	1134	1418	1701

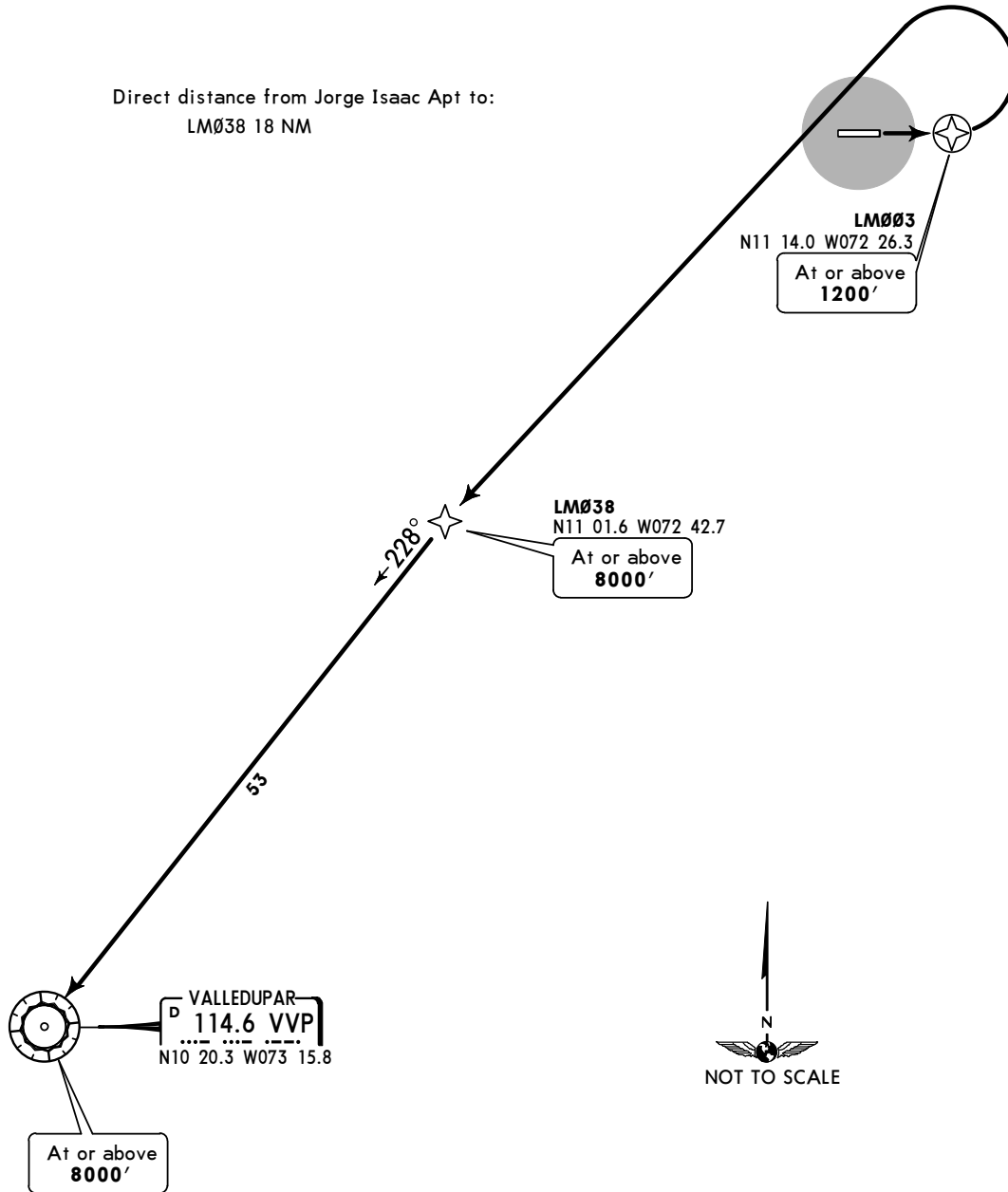
Apt Elev
339'

Trans level: FL190 Trans alt: 18000'

VALLEDUPAR 1E (VVP 1E) RNAV (GNSS)
(RWY 10)

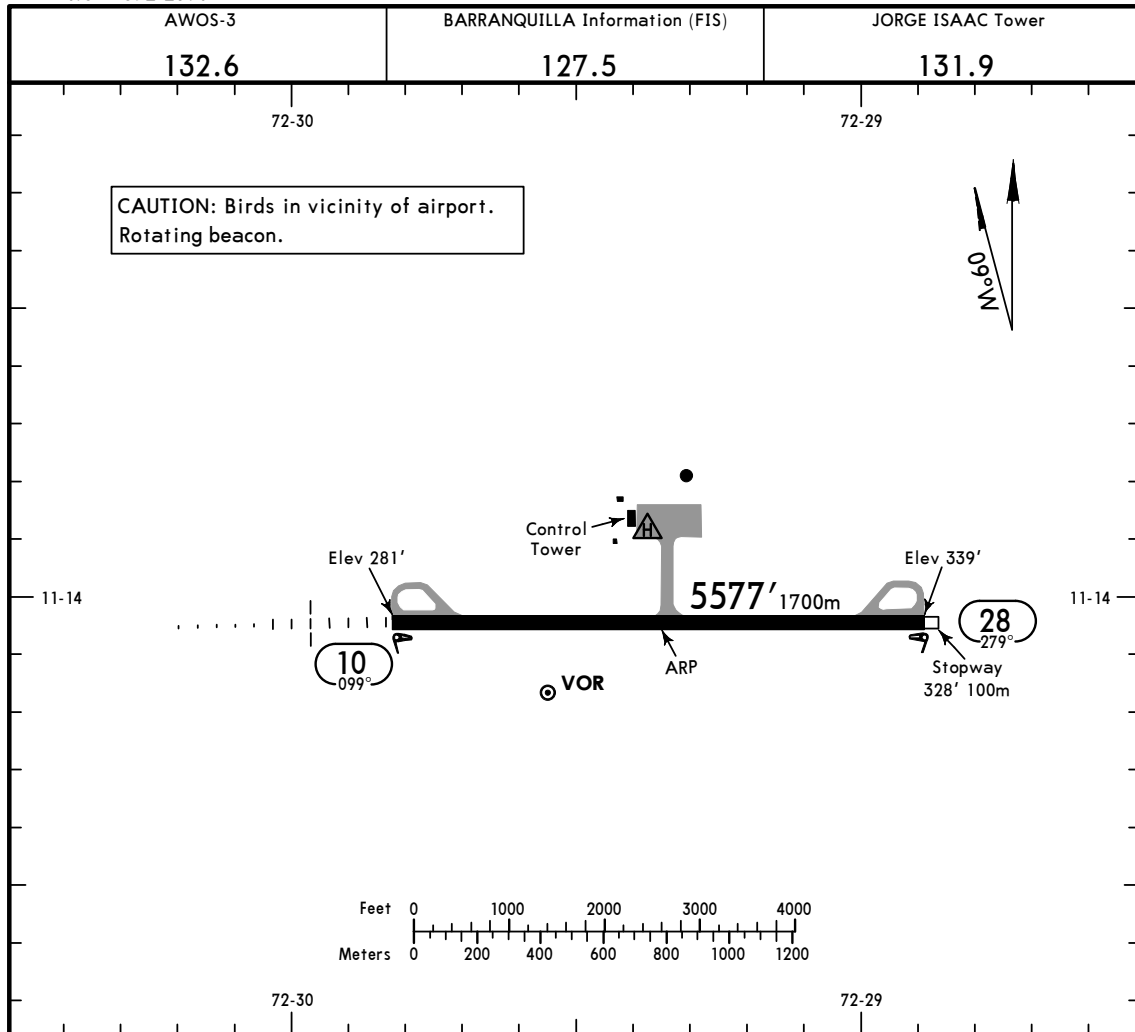
CAT A, B & C

Direct distance from Jorge Isaac Apt to:
LM038 18 NM



This SID requires a minimum climb gradient of 5.6% to LM003.

Gnd speed-KT	75	100	150	200	250	300
5.6% V/V (fpm)	425	567	851	1134	1418	1701



ADDITIONAL RUNWAY INFORMATION

RWY					USABLE LENGTHS		TAKE-OFF	WIDTH
	RL	REIL	MALSR	PAPI-L (angle 3.0°)	Threshold	Glide Slope		
10	RL	REIL	MALSR	PAPI-L (angle 3.0°)		4625' 1410m		148'
28	RL	REIL	PAPI-L	(angle 3.3°)				45m

TAKE-OFF

All Rwys

1 Take-off Alternate Airport Filed

RL & RCLM

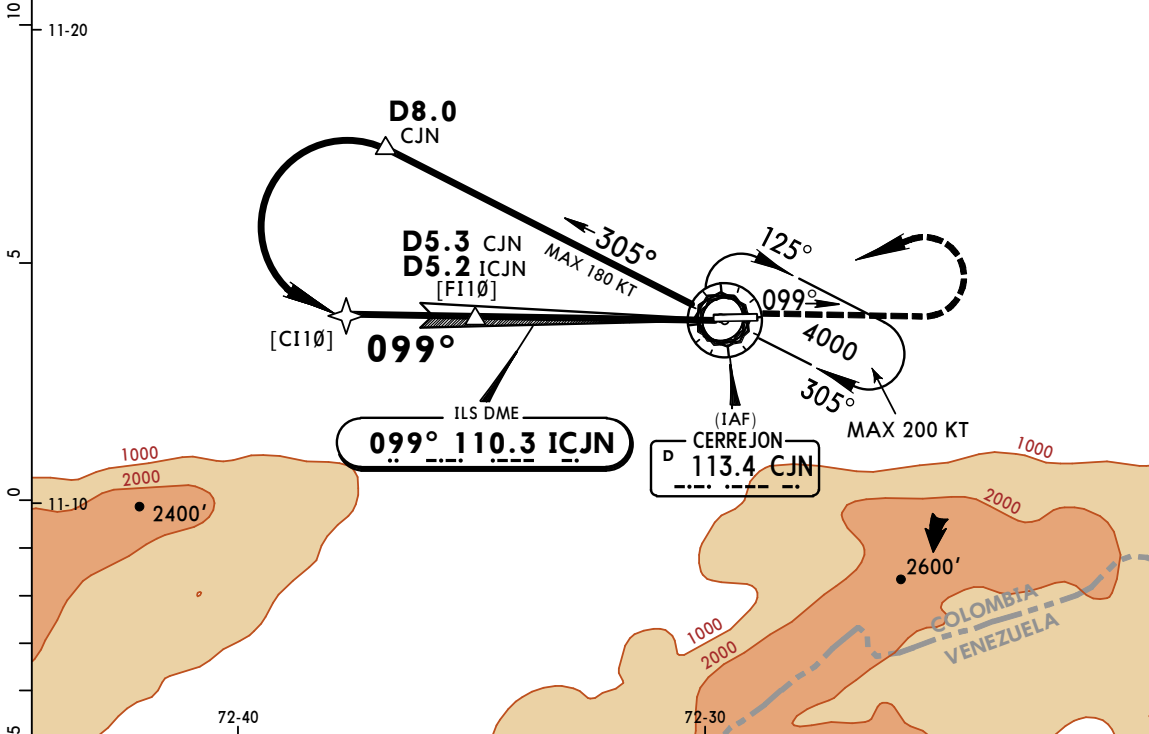
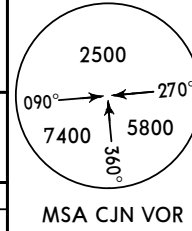
STD

1 Eng	3000m
2 Eng	1 hour alternate (1 Eng inop) 500m
3 & 4 Eng	2 hour alternate (1 Eng inop) 500m

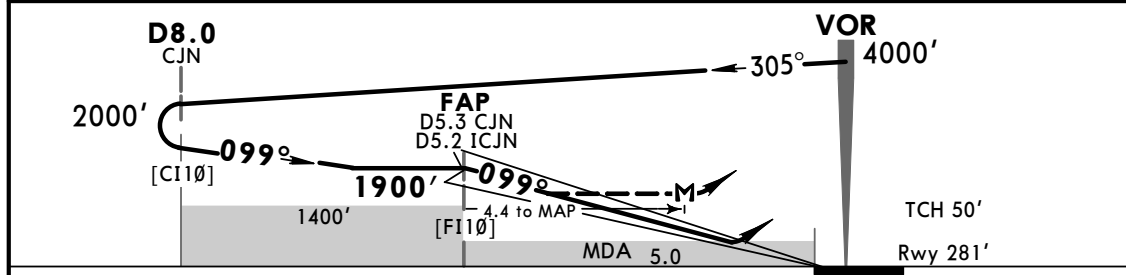
1 With appropriate approval.

In case of failure of AWOS-3 equipment, use QNH of right-hand circuit and increase/raise operational minima by 150'.

AWOS-3 132.6		BARRANQUILLA Information (FIS) 127.5		JORGE ISAAC Tower 131.9	
LOC ICJN 110.3	Final Apch Crs 099°	Minimum Alt FAP 1900' (1619')	ILS DA(H) 540' (259')	Apt Elev 345' Rwy 281'	
MISSED APCH: Maintain heading 099° and climb to 1000', then turn LEFT to CJN VOR to hold at 4000'. Minimum climb gradient 3.0% to 1000'.					
Alt Set: IN (hPa on req)		Trans level: FL 190		Trans alt: 18000'	
1. CJN VOR required. 2. CJN DME or ICJN DME required.					



LOC	ICJN	5.0	4.0	3.0	2.0
GS (out)	ALTITUDE	1911'	1595'	1279'	963'



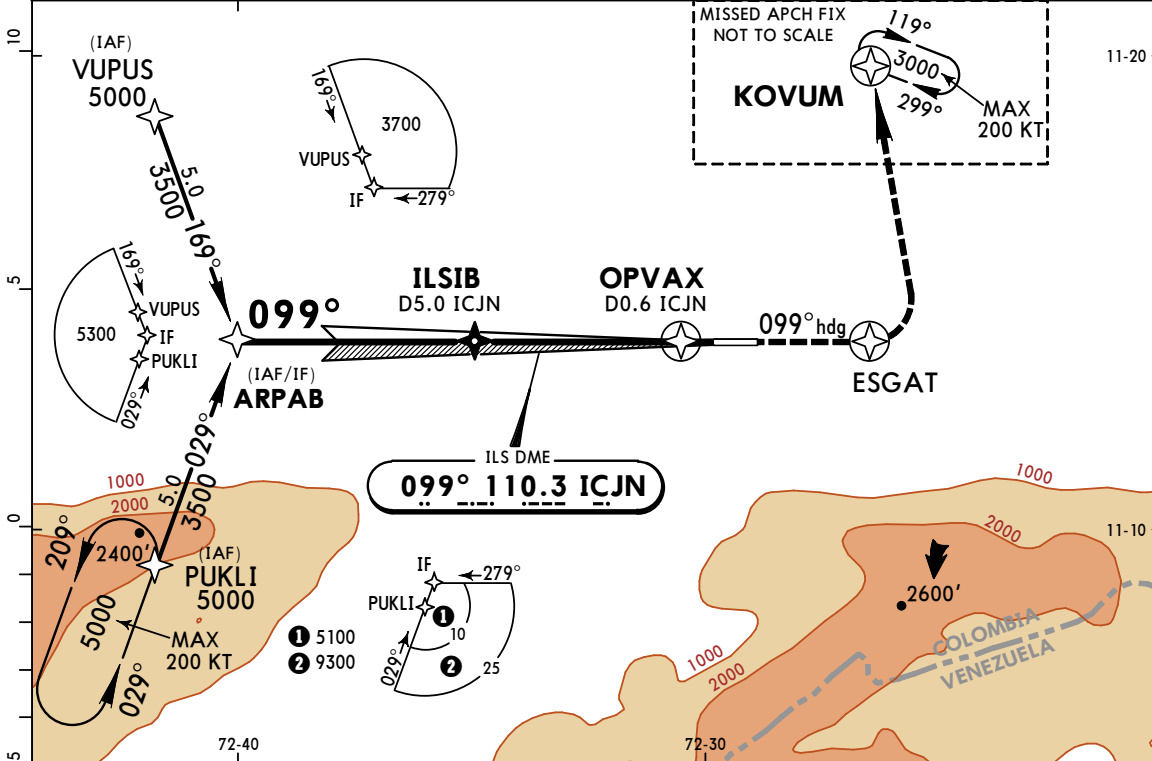
Gnd speed-Kts	70	90	100	120	140	160	MALSR REIL PAPI	099° hdg	1000' ↑	4000' ←	CJN 113.4	
GS	3.00°	372	478	531	637	743						849
FAP to MAP	4.4	3:46	2:56	2:38	2:12	1:53						1:39

STRAIGHT-IN LANDING RWY10 Missed Apch Climb Gradient Mim 3.0% to 1000'				CIRCLE-TO-LAND Missed Apch Climb Gradient Mim 3.0% to 1000'			
ILS DA(H) 540' (259')		LOC (GS out) MDA(H) 690' (409')		Max Kts		MDA(H)	
FULL	RAIL or ALS out	RAIL out	ALS out	100	740' (395') - 2000m		
1000m	1400m	1600m		135	840' (495') - 3000m		
		2000m		180	1040' (695') - 4000m		
NOT APPLICABLE		NOT APPLICABLE		D	NOT APPLICABLE		

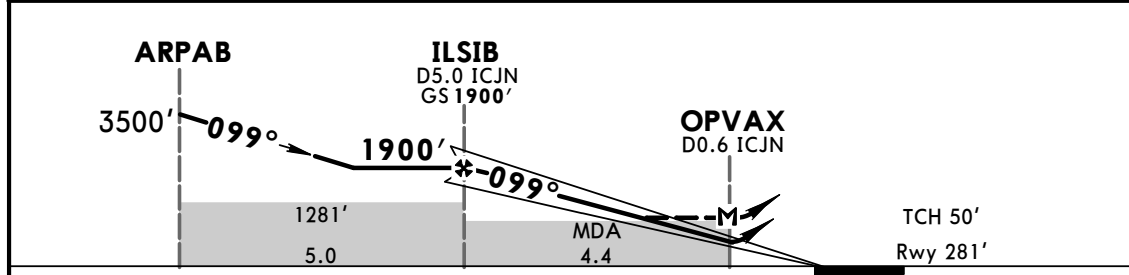
PANS OPS

Not Authorized South of Airport.

AWOS-3 132.6		BARRANQUILLA Information (FIS) 127.5		JORGE ISAAC Tower 131.9	
LOC ICJN 110.3	Final Apch Crs 099°	GS ILSIB 1900' (1619')	ILS DA(H) 531' (250')	Apt Elev 345'	TAA 25 NM IAF
Rwy 281'					
MISSED APCH: Maintain heading 099° and climb to ESGAT and 1000', then turn LEFT to KOVUM to hold at 3000'. Minimum climb gradient 3.0% to 1000'.					
Alt Set: IN (hPa on req)		Trans level: FL 190		Trans alt: 18000'	
1. ICJN DME required. 2. Do not use PUKLI and KOVUM holding simultaneously at the same level.					



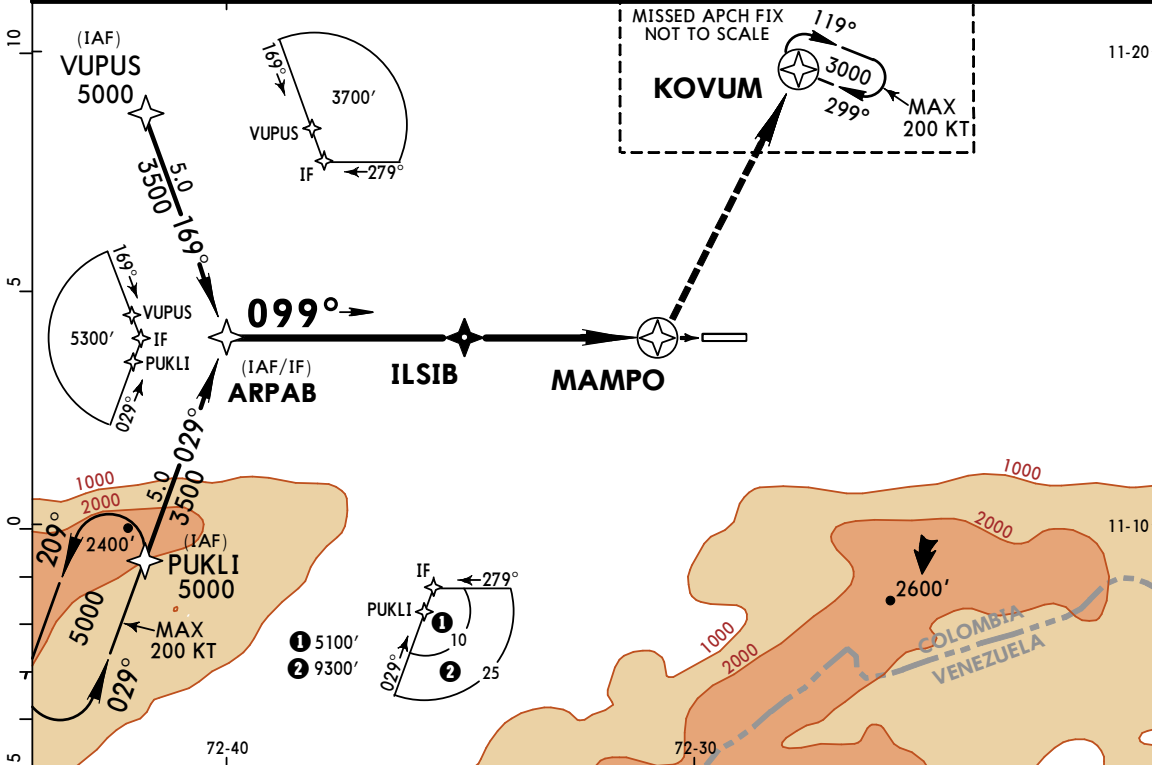
LOC	ICJN	5.0	4.0	3.0	2.0	1.0
(GS out)	ALTITUDE	1911'	1595'	1279'	963'	647'



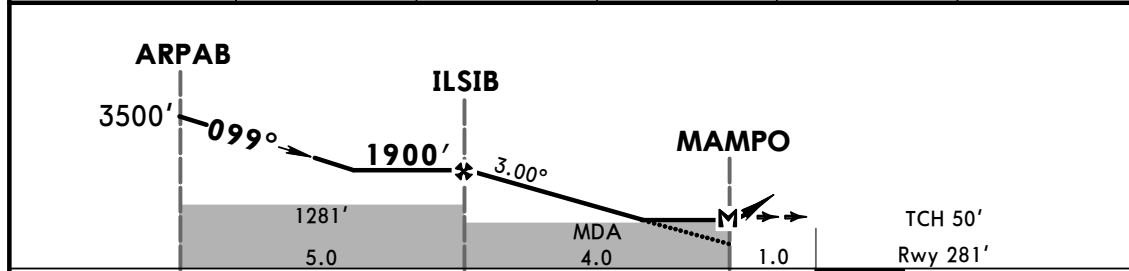
Gnd speed-Kts	70	90	100	120	140	160	MALSR REIL PAPI	099° hdg	1000' ↑	ESGAT	
GS	3.00°	372	478	531	637	743					849
FAF to MAP	4.4	3:46	2:56	2:38	2:12	1:53					1:39

STRAIGHT-IN LANDING RWY10 Missed Apch Climb Gradient Mim 3.0% to 1000'					CIRCLE-TO-LAND Missed Apch Climb Gradient Mim 3.0% to 1000'				
ILS DA(H) 531' (250')		LOC (GS out) MDA(H) 631' (350')			Max Kts		MDA(H)		
FULL	RAIL or ALS out	RAIL out			ALS out			100	
1300m		1800m			135			740' (395') - 2000m	
NOT APPLICABLE		NOT APPLICABLE			180			840' (495') - 2500m	
NOT APPLICABLE		NOT APPLICABLE			D			1040' (695') - 3600m	
NOT APPLICABLE		NOT APPLICABLE			D			NOT APPLICABLE	

AWOS-3 132.6		BARRANQUILLA Information (FIS) 127.5		JORGE ISAAC Tower 131.9	
RNAV	Final Apch Crs 099°	Minimum Alt ILSIB 1900' (1619')	LNAV MDA(H) 630' (349')	Apt Elev 345' Rwy 281'	TAA 25 NM IAF
MISSED APCH: Turn LEFT, climb to KOVUM to hold at 3000'.					
Alt Set: IN (hPa on req)		Trans level: FL 190		Trans alt: 18000'	
1. Do not use PUKLI and KOVUM holding simultaneously at the same level.					



DIST to THR	5.0	4.0	3.0	2.0	1.0
ALTITUDE	1911'	1595'	1279'	963'	647'



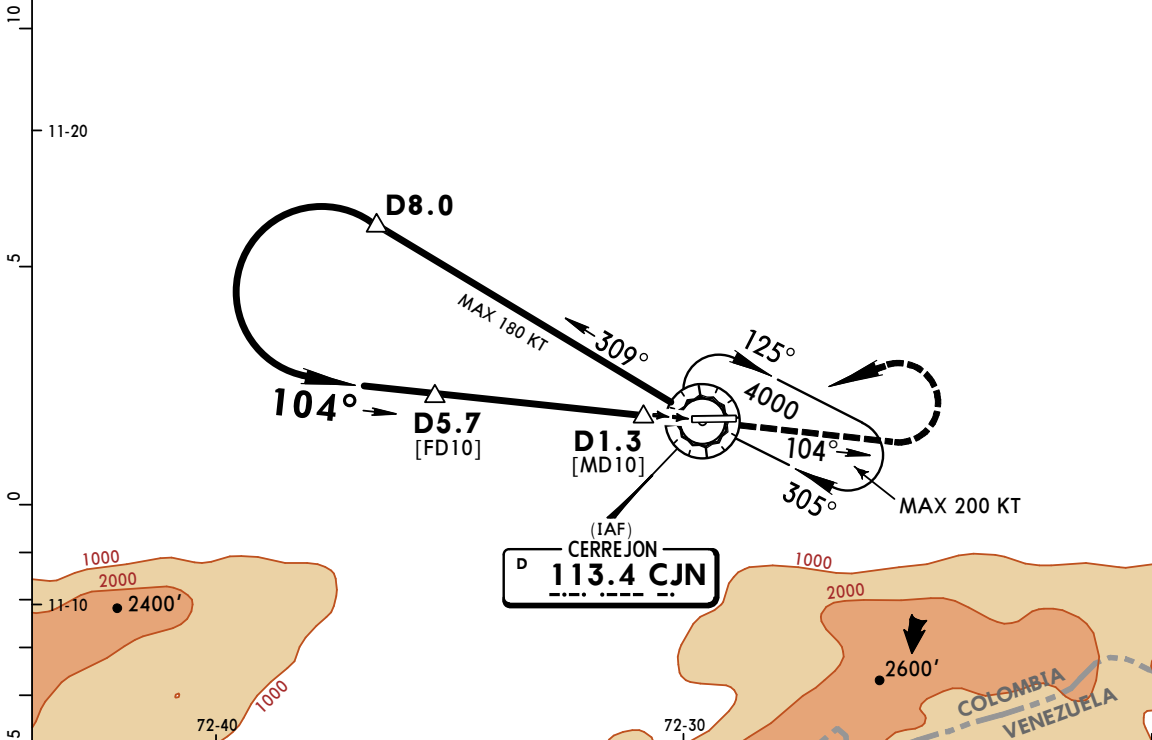
Gnd speed-Kts	70	90	100	120	140	160	MALSR REIL PAPI	LT	KOVUM	3000'
Descent Angle 3.00°	372	478	531	637	743	849				
MAP at MAMPO or										
FAF to MAP	4.0	3:26	2:40	2:24	2:00	1:43				

STRAIGHT-IN LANDING RWY10				CIRCLE-TO-LAND			
LNAV							
MDA(H) 630' (349')							
FULL		RAIL or ALS out		Max Kts	MDA(H)		
A	1800m			100	740' (395') - 2000m		
B	2000m			135	840' (495') - 2500m		
C	NOT APPLICABLE			180	1040' (695') - 3600m		
D	NOT APPLICABLE			D	NOT APPLICABLE		

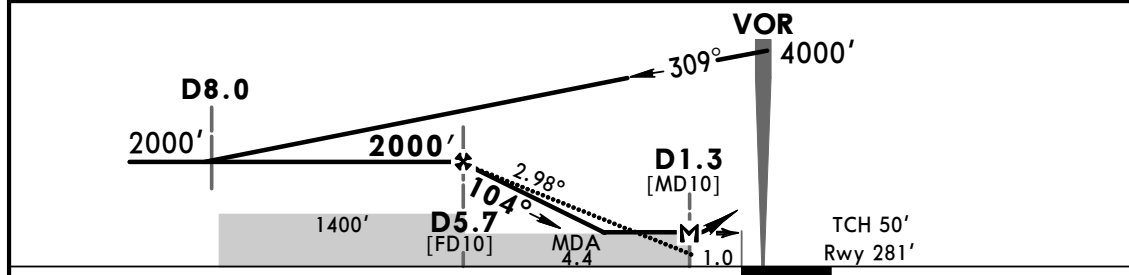
PANS OPS

Not Authorized South of Airport.

AWOS-3 132.6		BARRANQUILLA Information (FIS) 127.5			JORGE ISAAC Tower 131.9
VOR CJN 113.4	Final Apch Crs 104°	Minimum Alt D5.7 2000' (1719')	MDA(H) 700' (419')	Apt Elev 345' Rwy 281'	<p>MSA CJN VOR</p>
MISSED APCH: Maintain heading 104° and climb to 1000', then turn LEFT to CJN VOR and hold at 4000'. Minimum climb gradient 3.0% to 1000'.					
Alt Set: IN (hPa on req)		Trans level: FL 190		Trans alt: 18000'	
1. CJN VOR, DME required.					



CJN DME	5.0	4.0	3.0	2.0
ALTITUDE	1825'	1510'	1194'	878'



Gnd speed-Kts	70	90	100	120	140	160	MALSR REIL PAPI	104° hdg	1000' ↑	4000' LT	CJN 113.4	
Descent Angle	2.98°	369	474	527	633	738						843
MAP at D1.3 CJN or FAF to MAP	4.4	3:46	2:56	2:38	2:12	1:53						1:39

STRAIGHT-IN LANDING RWY 10 Missed Apch Climb Gradient Mim 3.0% to 1000' MDA(H) 700' (419')				CIRCLE-TO-LAND Missed Apch Climb Gradient Mim 3.0% to 1000'			
RAIL out		ALS out		Max Kts	MDA(H)		
A	1600m		100		740' (395') - 2000m		
B	2000m		135	840' (495') - 3000m			
C	NOT APPLICABLE		180	1 1040' (695') - 4000m			
D	NOT APPLICABLE		D	NOT APPLICABLE			

PANS OPS

1 Not Authorized South of Airport.