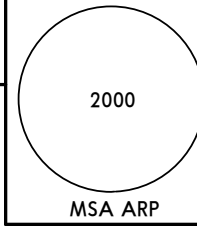
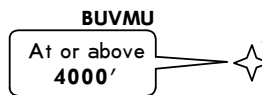
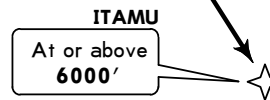
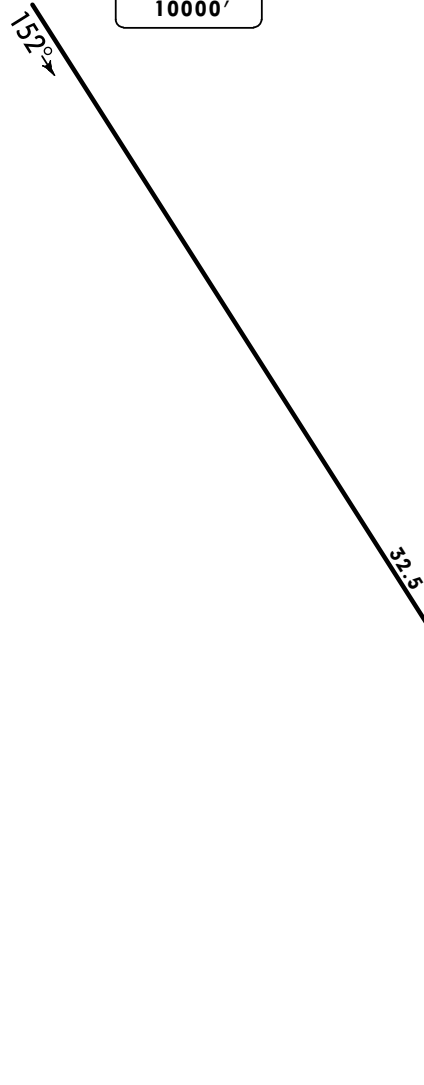
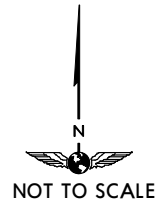


Apt Elev
607'

Alt Set: IN (hPa on req) Trans level: FL190 Trans alt: 18000'
1. RNP 1 or RNAV 1 certification.
2. GNSS required.

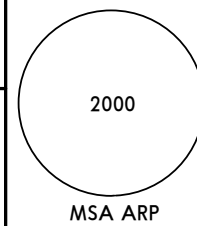


VAKIM 1B [VAKI1B]
RNAV (GNSS) ARRIVAL
(RWY 30)
CAT A, B & C

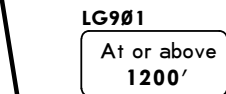


Apt Elev
607'

Trans level: FL190 Trans alt: 18000'
1. RNP 1 or RNAV 1 certification.
2. GNSS required.



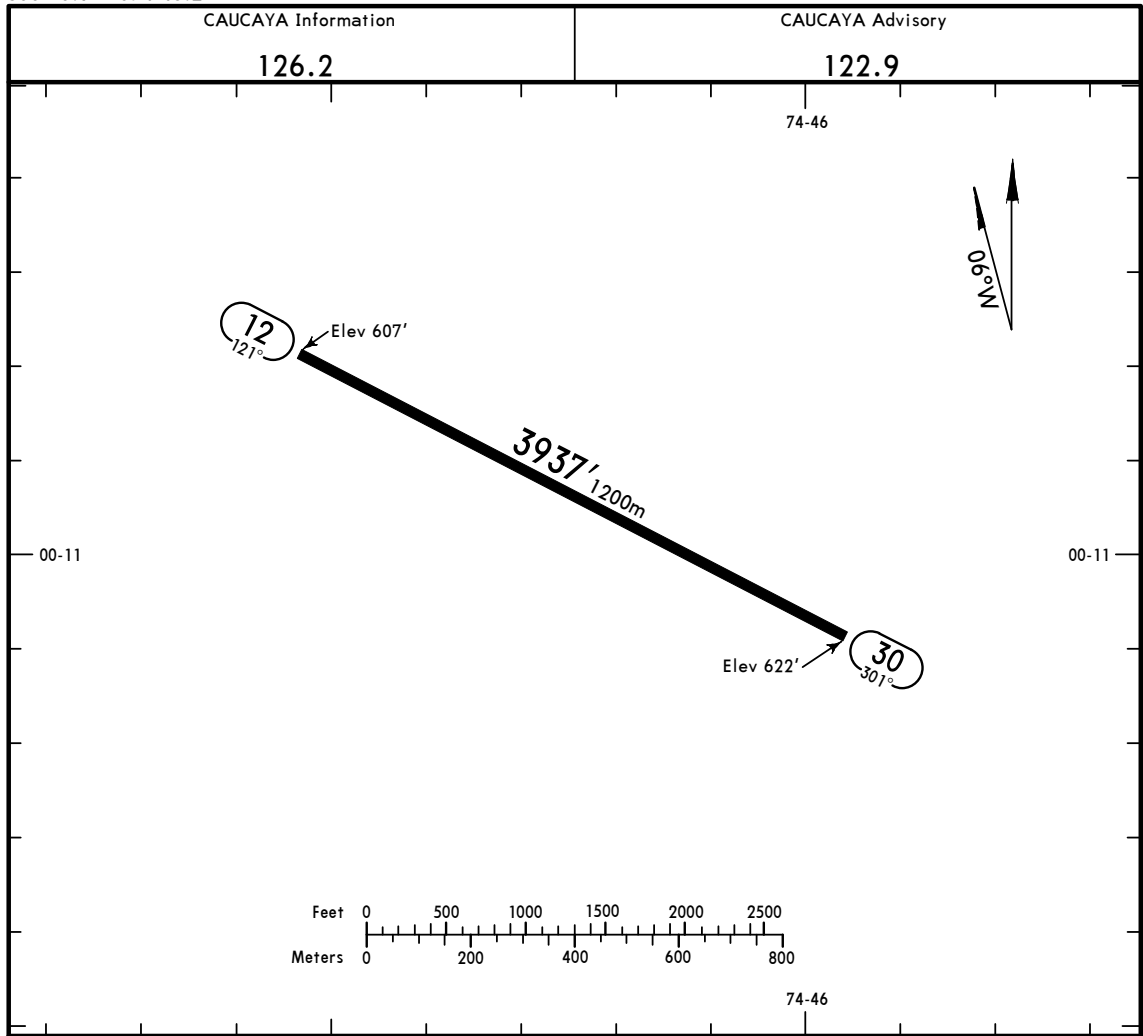
VAKIM 1A [VAKI1A]
RNAV (GNSS) DEPARTURE
(RWY 30)
CAT A, B & C



COLOMBIA
PERU

MAINTAIN minimum climb gradient of 5.0% until reaching MEA of R-567.

Gnd speed-KT	75	100	150	200	250	300
5.0% V/V (fpm)	380	506	760	1013	1266	1519



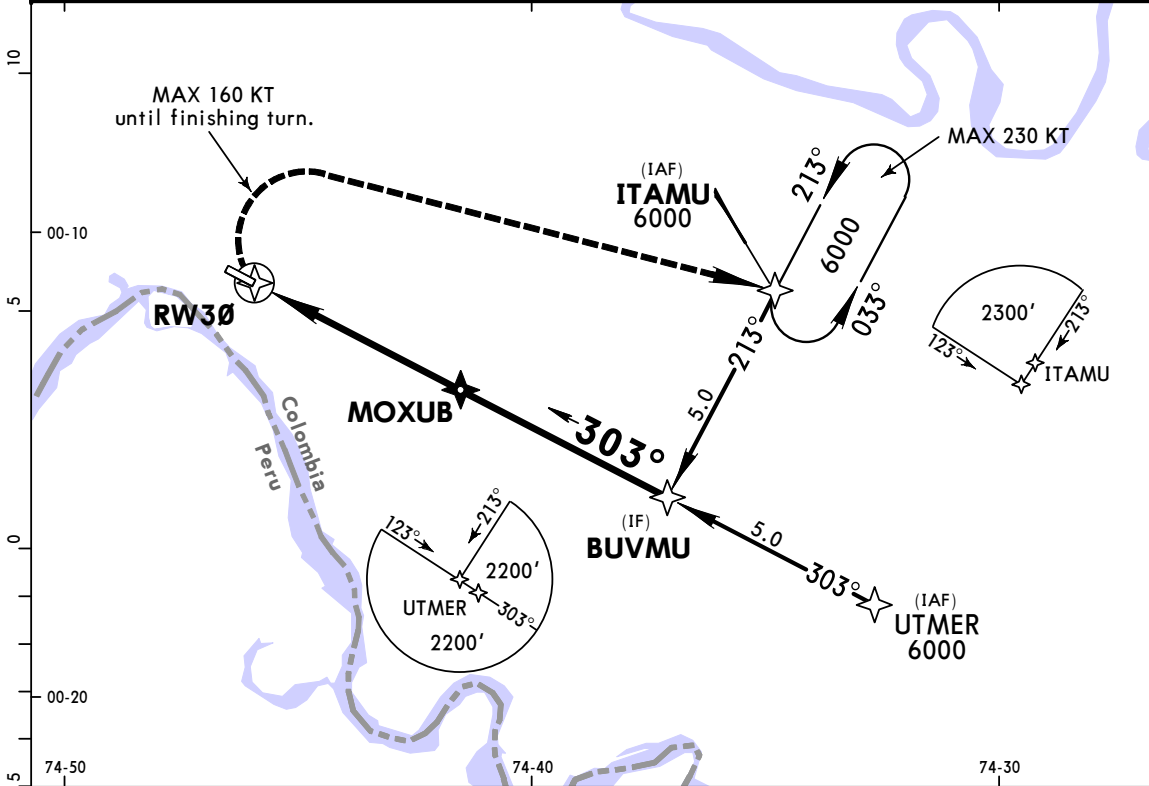
ADDITIONAL RUNWAY INFORMATION

RWY	USABLE LENGTHS	LANDING BEYOND		TAKE-OFF	WIDTH
		Threshold	Glide Slope		
12 30					65' 20m
TAKE-OFF					
All Rwys					
Standard					
1 & 2 Eng			3 & 4 Eng		
1600m			800m		

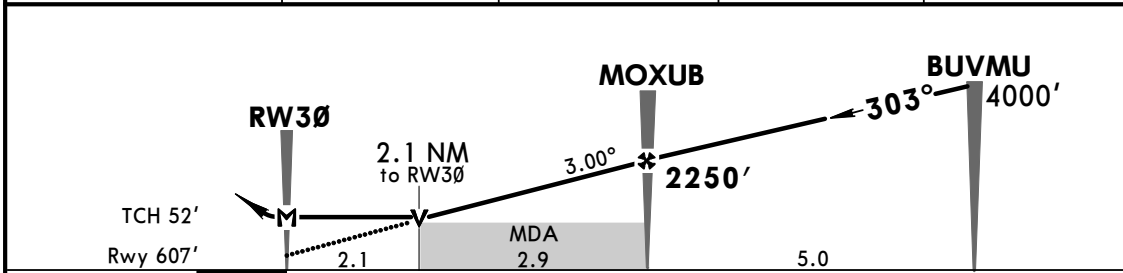
SKLG/LQM
CAUCAYA

JEPPESEN PUERTO LEGUIZAMO, COLOMBIA
30 NOV 18 Eff 6 Dec (12-1) CAT A, B & C RNAV (GNSS) RWY 30

CAUCAYA Information			CAUCAYA Advisory		
126.2			122.9		
RNAV	Final Apch Crs 303°	Minimum Alt MOXUB 2250' (1643')	LNAV MDA(H) 1330' (723')	Apt Elev 607' Rwy 607'	TAA 25 NM IAF
MISSED APCH: Turn RIGHT climbing to ITAMU and hold at 6000'.					
Alt Set: IN (hPa on req)		Trans level: FL 190		Trans alt: 18000'	
RNP Apch 1. Refer to Tres Esquinas Tower for altimeter setting.					



DIST to THR	2.1	3.0	4.0	5.0
ALTITUDE	1330'	1615'	1930'	2250'



Gnd speed-Kts	70	90	100	120	140	160	RT	ITAMU 6000'
Descent Angle 3.00°	372	478	531	637	743	849		
MAP at RW30								

STRAIGHT-IN LANDING RWY 30				CIRCLE-TO-LAND			
LNAV MDA(H) 1330' (723')				Max Kts			
A	3600m			100	MDA(H)		
B	3800m			135	1520' (913') - 4300m		
C	NOT APPLICABLE			180	1770' (1163') - 5000m		
D	NOT APPLICABLE			D	NOT APPLICABLE		

CHANGES: RNP note, altitude.

© JEPPESEN, 2016, 2018. ALL RIGHTS RESERVED.