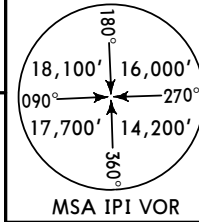
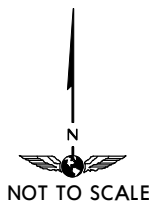
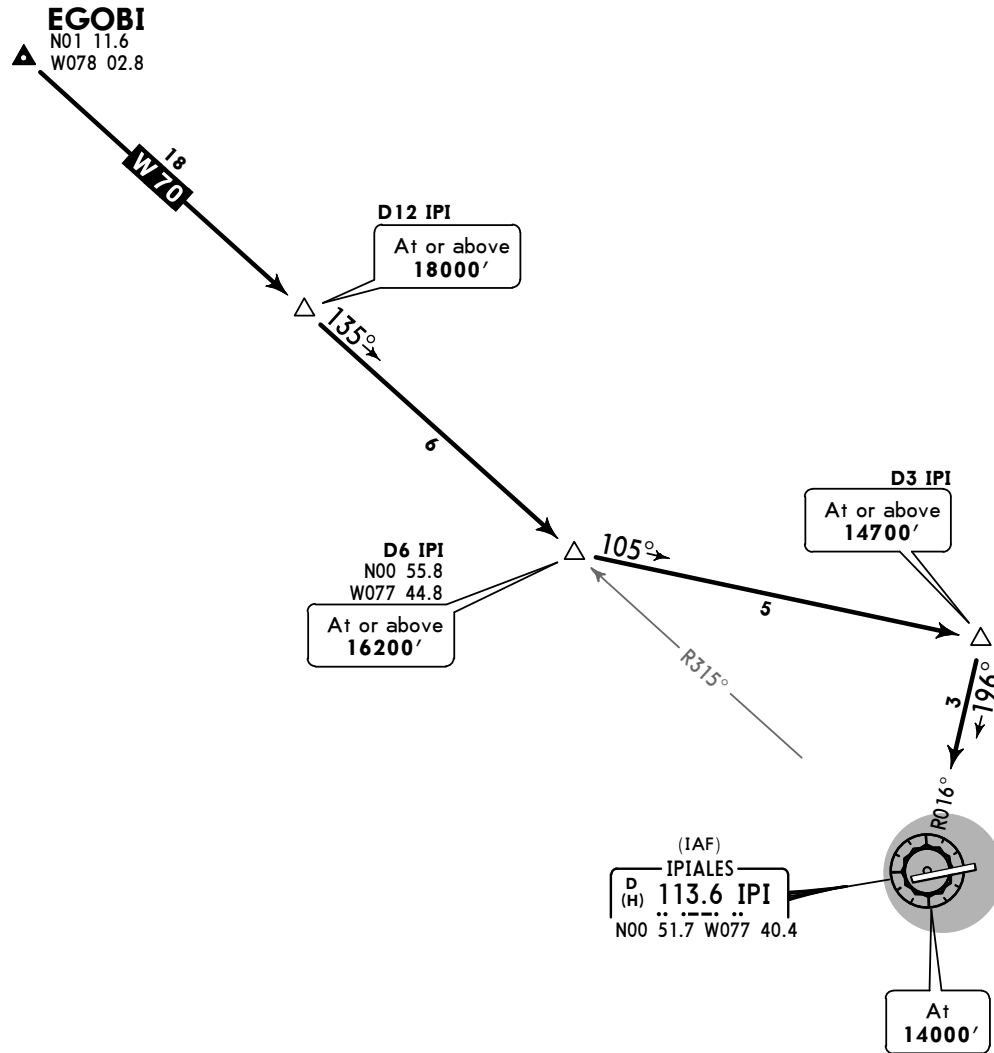


Apt Elev
9783'

Alt Set: IN (hPa on req)
Trans level: FL190 Trans alt: 18000'
IPI DME required.

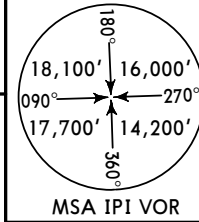


EGOBI FOUR ALFA (EGOBI 4A) ARRIVAL
[EGOB4A]
(RWY 08)
CAT A, B & C

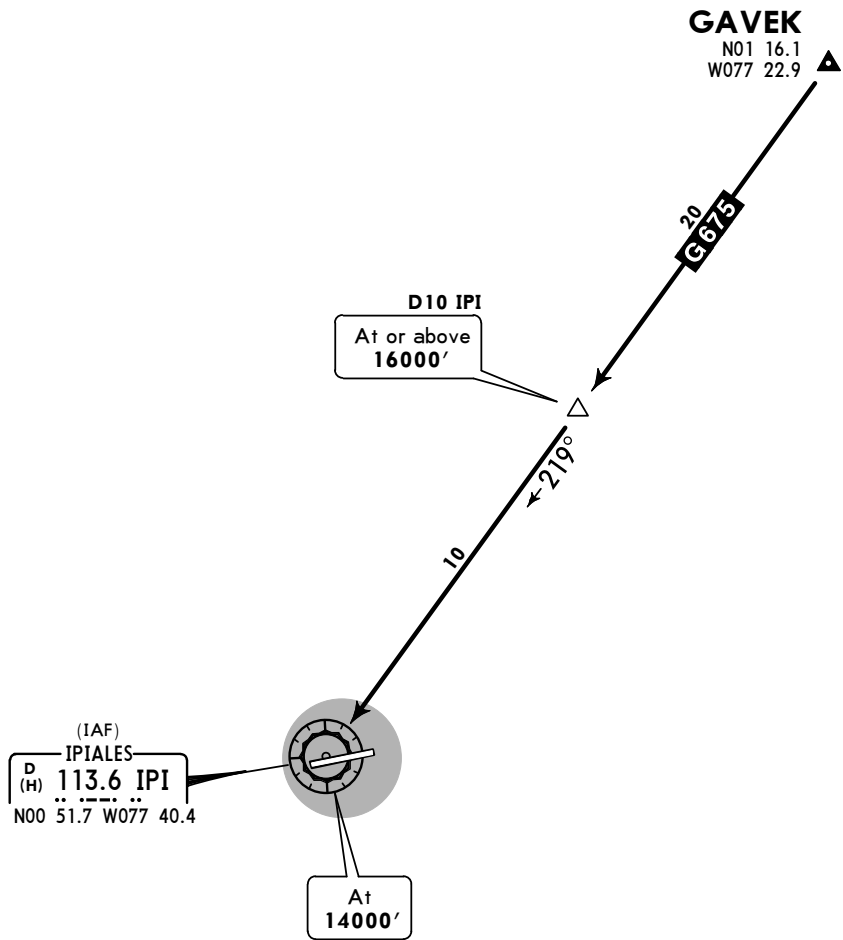


Apt Elev
9783'

Alt Set: IN (hPa on req)
Trans level: FL190 Trans alt: 18000'
IPI DME required



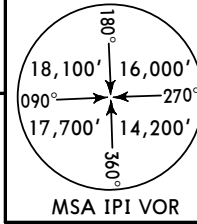
GAVEK FOUR ALFA (GAVEK 4A) ARRIVAL
[GAVE4A]
(RWY 08)
CAT A, B & C



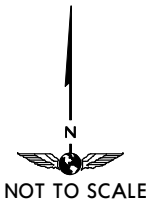
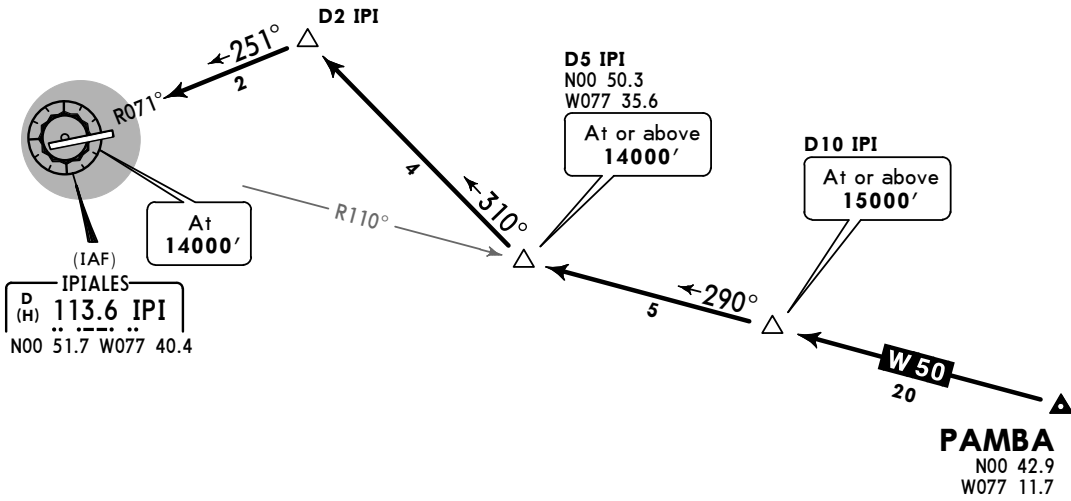
N
NOT TO SCALE

Apt Elev
9783'

Alt Set: IN (hPa on req)
Trans level: FL190 Trans alt: 18000'
IPI DME required

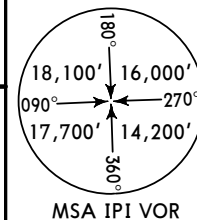


PAMBA SIX ALFA (PAMBA 6A) ARRIVAL
[PAMB6A]
(RWY 08)
CAT A, B & C



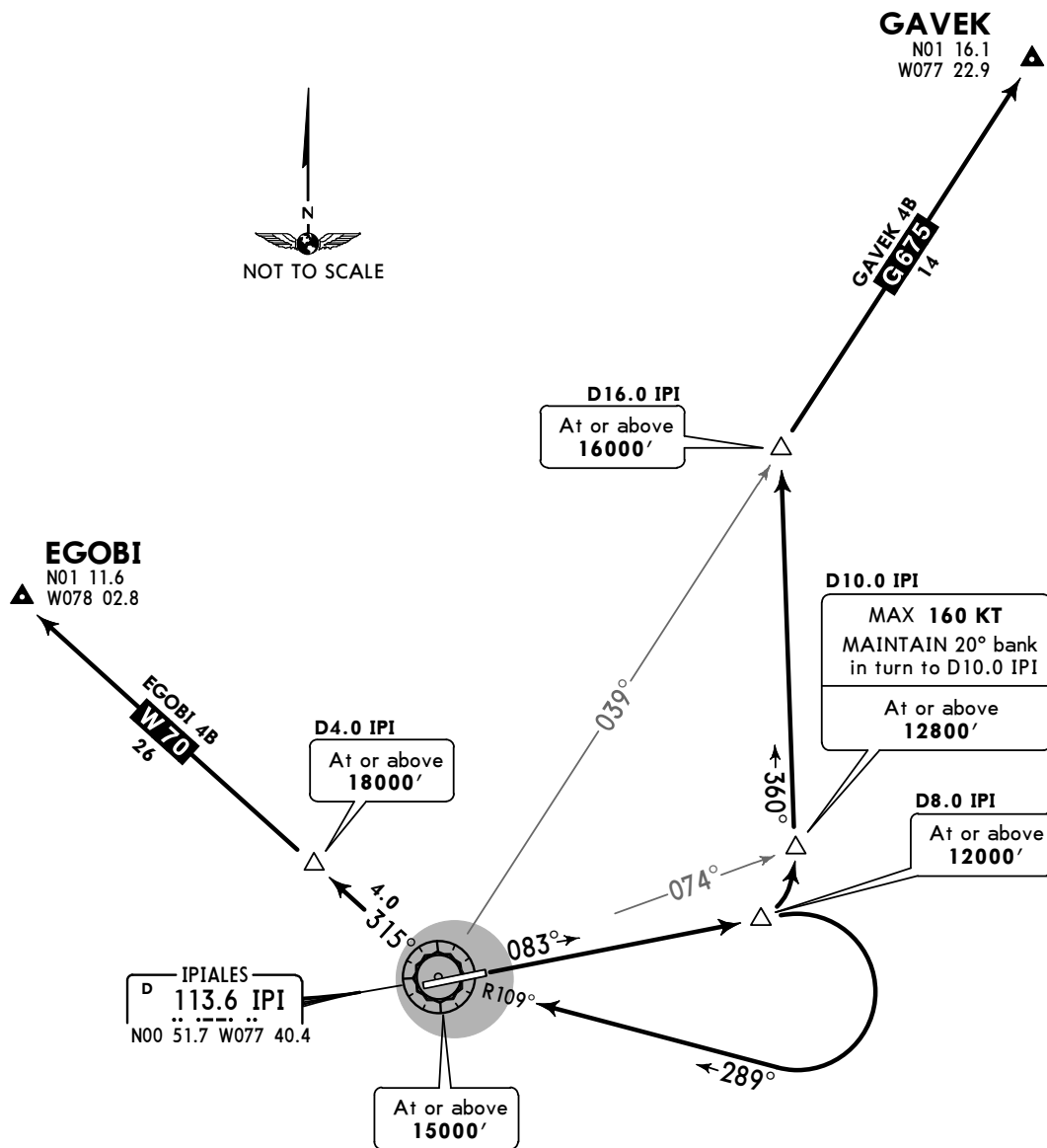
Apt Elev
9793'

Trans level: FL190 Trans alt: 18000'
IPI DME required.



EGOBI 4B (EGOBI 4B) [EGOB4B]
GAVEK 4B (GAVEK 4B) [GAVE4B]
(RWY 08)

CAT A, B & C

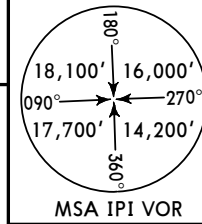


These SIDs require take-off minimums:
Ceiling 11320'. Visibility 5000m and
a minimum climb gradient of 5.4% until reaching MEA.

Gnd speed-KT	75	100	150	200	250	300
5.4% V/V (fpm)	410	547	820	1094	1367	1641

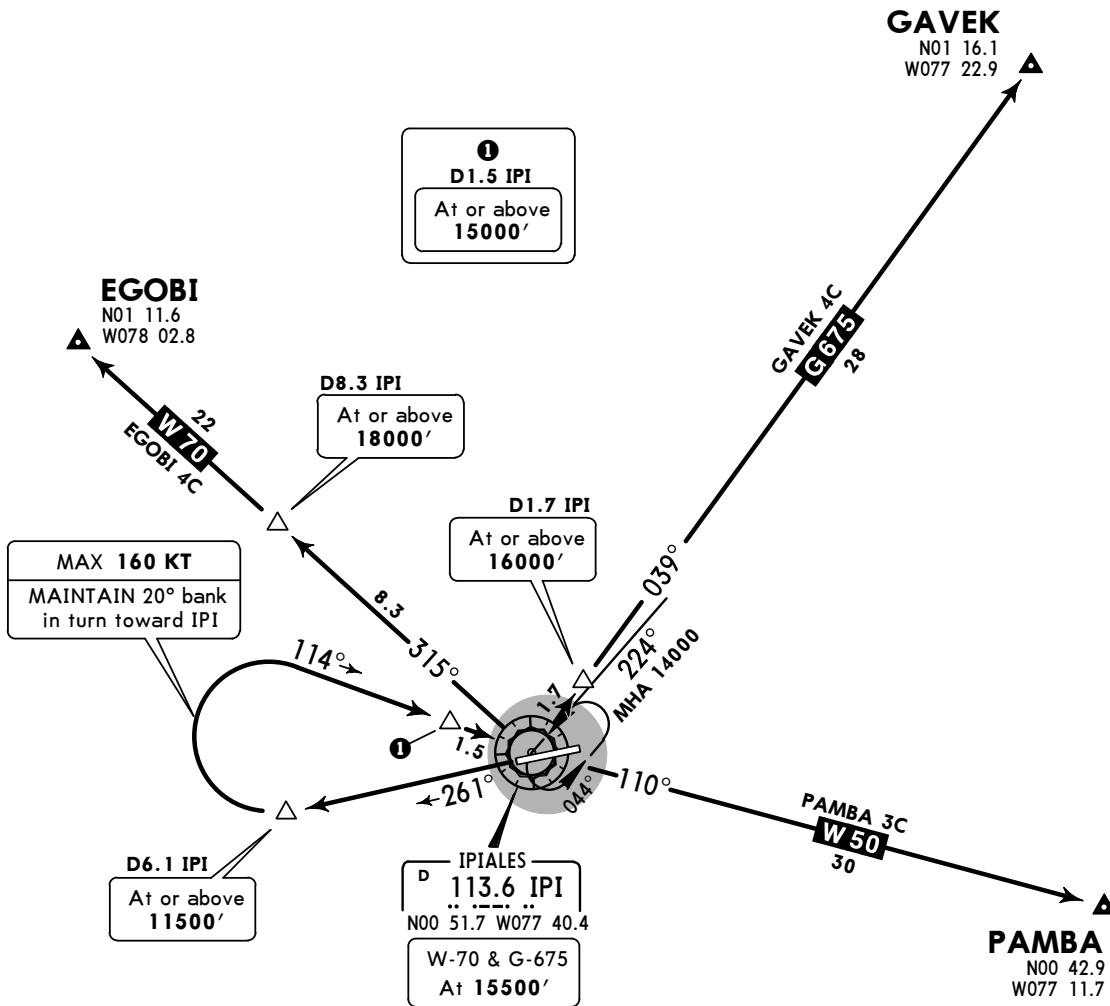
Apt Elev
9793'

Trans level: FL190 Trans alt: 18000'
IPI DME required.



EGOBI 4C (EGOBI 4C) [EGOB4C]
GAVEK 4C (GAVEK 4C) [GAVE4C]
PAMBA 3C (PAMBA 3C) [PAMB3C]
(RWY 26)

CAT A, B & C

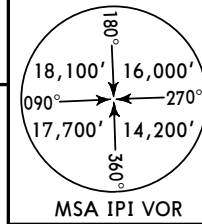


These SIDs require take-off minimums:
Ceiling 11320'. Visibility 5000m and
a minimum climb gradient of 5.0% until reaching MEA.

Gnd speed-KT	75	100	150	200	250	300
5.0% V/V (fpm)	380	506	760	1013	1266	1519

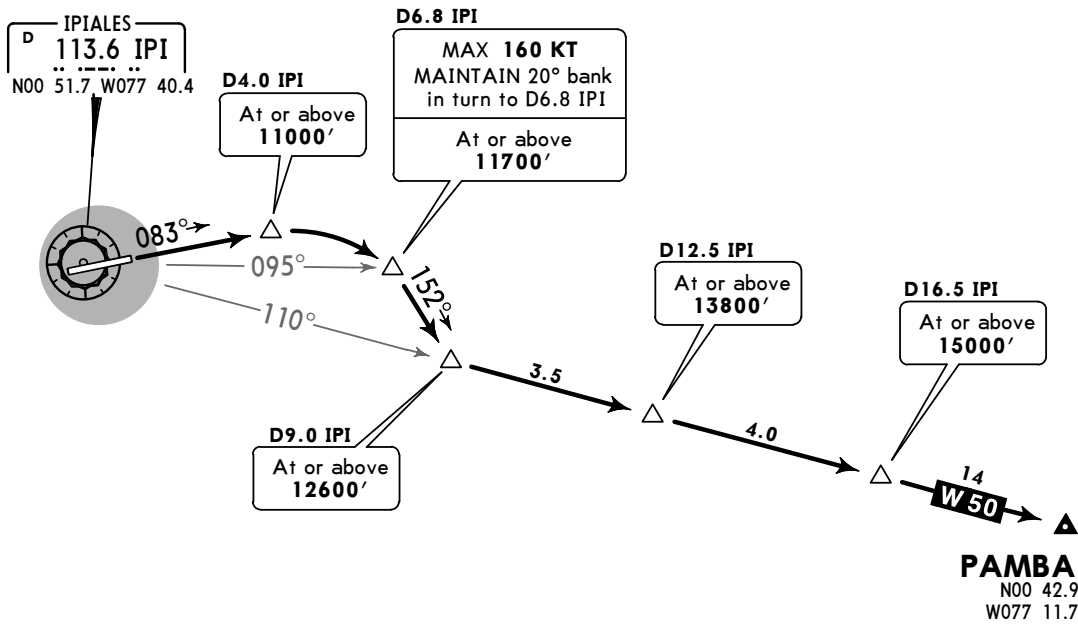
Apt Elev
9793'

Trans level: FL190 Trans alt: 18000'
IPI DME required



**PAMBA 5B (PAMBA 5B) [PAMB5B]
(RWY 08)**

CAT A, B & C



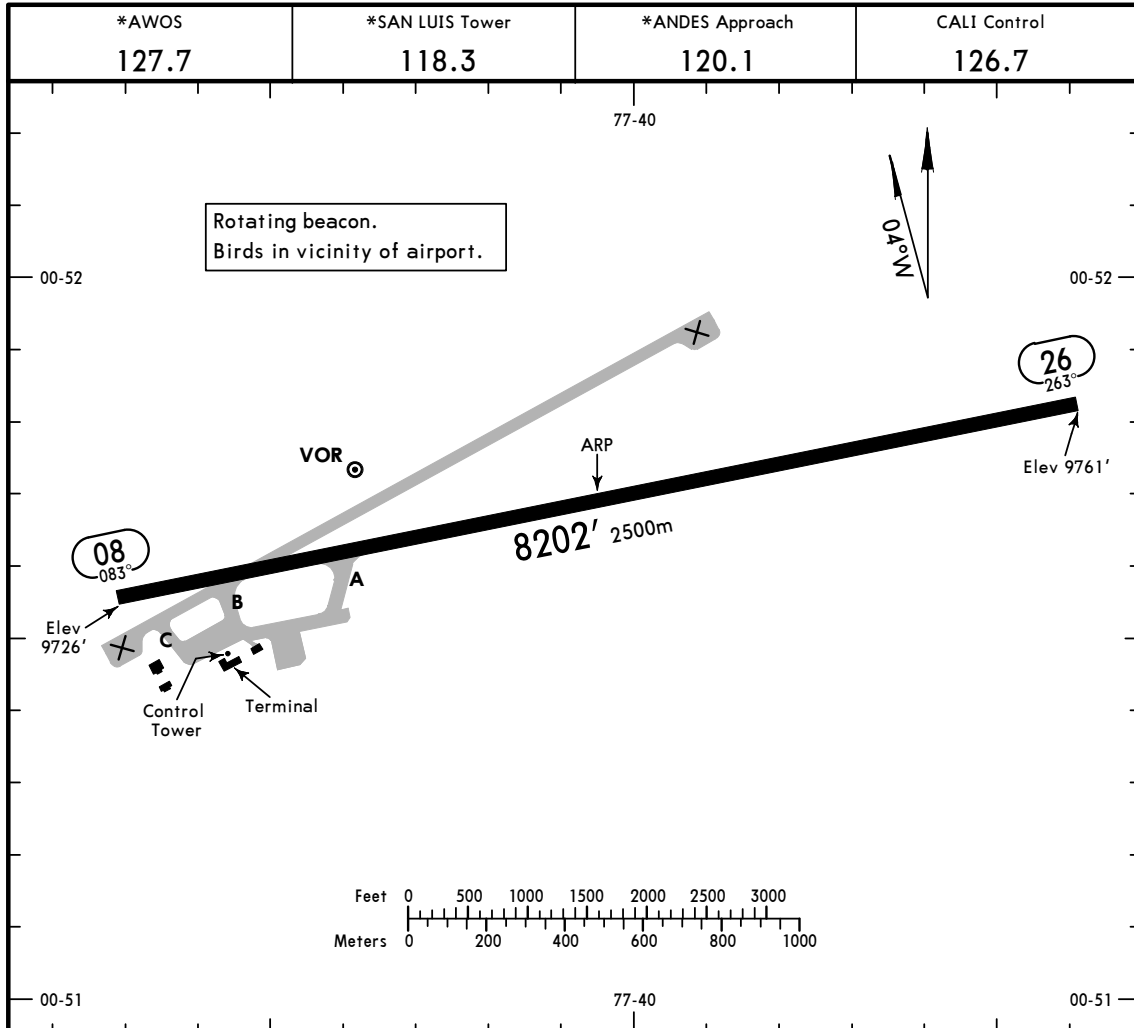
This SID requires take-off minimums:
Ceiling 11320'. Visibility 5000m and
a minimum climb gradient of 5.0% until reaching MEA.

Gnd speed-KT	75	100	150	200	250	300
5.0% V/V (fpm)	380	506	760	1013	1266	1519

SKIP/IPI
 Apt Elev **9761'**
 N00 51.7 W077 40.1

JEPPESEN
 24 AUG 18 **(10-9)**

IPIALES, COLOMBIA
SAN LUIS



ADDITIONAL RUNWAY INFORMATION

RWY	USABLE LENGTHS	LANDING BEYOND		TAKE-OFF	WIDTH
		Threshold	Glide Slope		
08 26	PAPI-L (angle 3.00°)				118' 36m

TAKE-OFF

All Rwys

Standard

1 & 2 Eng

3 & 4 Eng

1600m

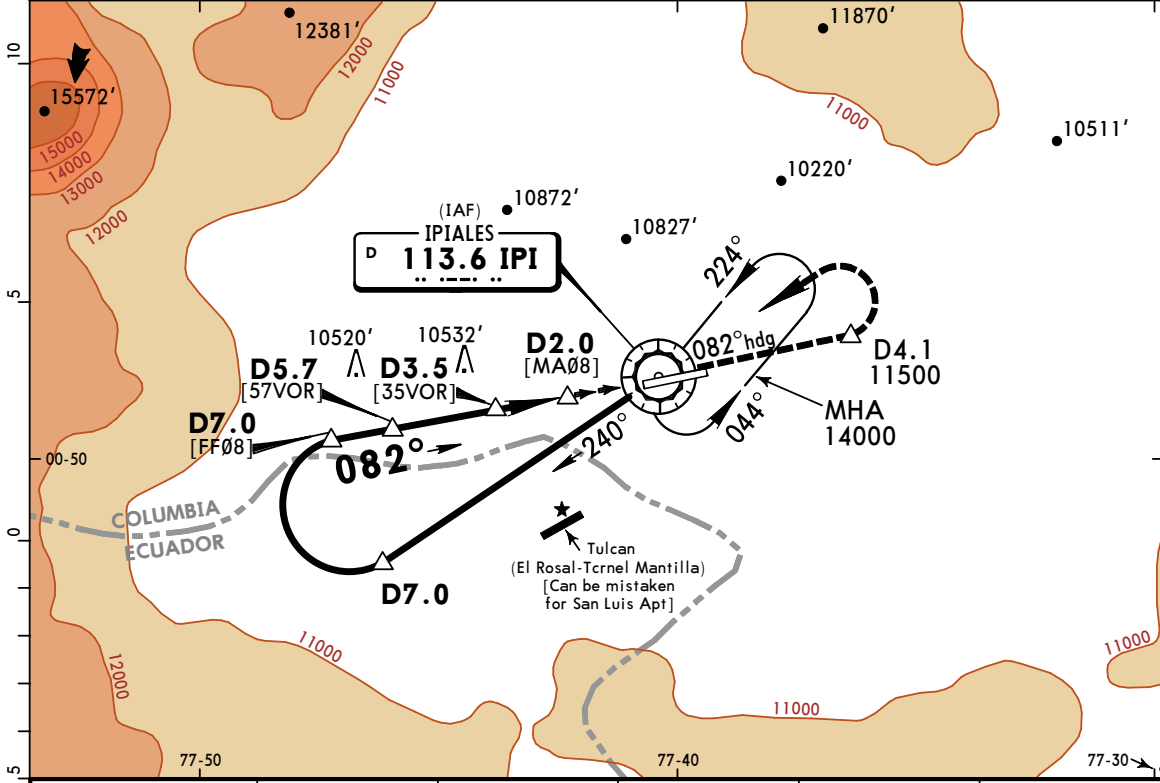
800m

**SKIP/IPI
SAN LUIS**

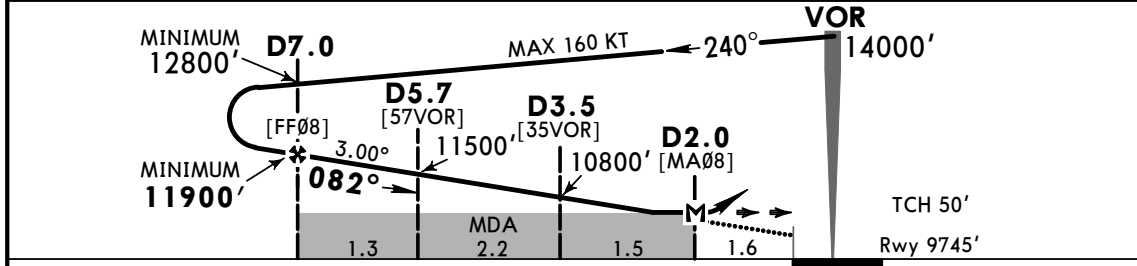
JEPPESEN
24 AUG 18 **(13-1)**

MISSED APCH CLIMB GRADIENT MIM 5.0% IPIALES, COLOMBIA
CAT A, B & C VOR Rwy 08

*AWOS 127.7		CALI Control 126.7		*ANDES Approach 120.1		*SAN LUIS Tower 118.3	
VOR IPI 113.6	Final Apch Crs 082°	Minimum Alt D7.0 2155'	MDA(H) 10340' (595')	Apt Elev 9783' Rwy 9745'			
MISSED APCH: Maintain heading 082° until crossing D4.1 IPI at 11,500' or above, then turn LEFT to IPI VOR holding at 14,000'. Missed Apch Climb Gradient Mim 5.0% to 11,500'.							
Alt Set: IN (hPa on req)		Trans level: FL 190		Trans alt: 18000'			
1. IPI DME required. 2. CAUTION: Do not exceed 9.5 DME IPI due to rising terrain.							



IPI DME	7.0	6.0	5.0	4.0	3.0
ALTITUDE	11900'	11600'	11280'	10960'	10640'



Gnd speed-Kts	70	90	100	120	140	160	PAPI-L	082° hdg	11500' ↑	IPI D4.1
Descent Angle 3.00°	372	478	531	637	743	849				
MAP at D2.0 or FAF to MAP	5.0	4:17	3:20	3:00	2:30	2:09				

STRAIGHT-IN LANDING RWY 08 Missed Apch Climb Gradient Mim 5.0% to 11,500' MDA(H) 10340' (595')				CIRCLE-TO-LAND Missed Apch Climb Gradient Mim 5.0% to 11,500' Prohibited North of Airport MDA(H) _____						
A	2900m			Max Kts	100			10980' (1197') - 5000m		
B	3100m				135			11360' (1577') - 5000m		
C	NOT APPLICABLE				180			NOT APPLICABLE		
D	NOT APPLICABLE				D			NOT APPLICABLE		

PANS OPS

CHANGES: AWOS added.

© JEPPESEN, 2016, 2018. ALL RIGHTS RESERVED.