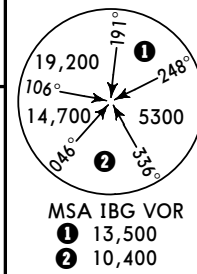


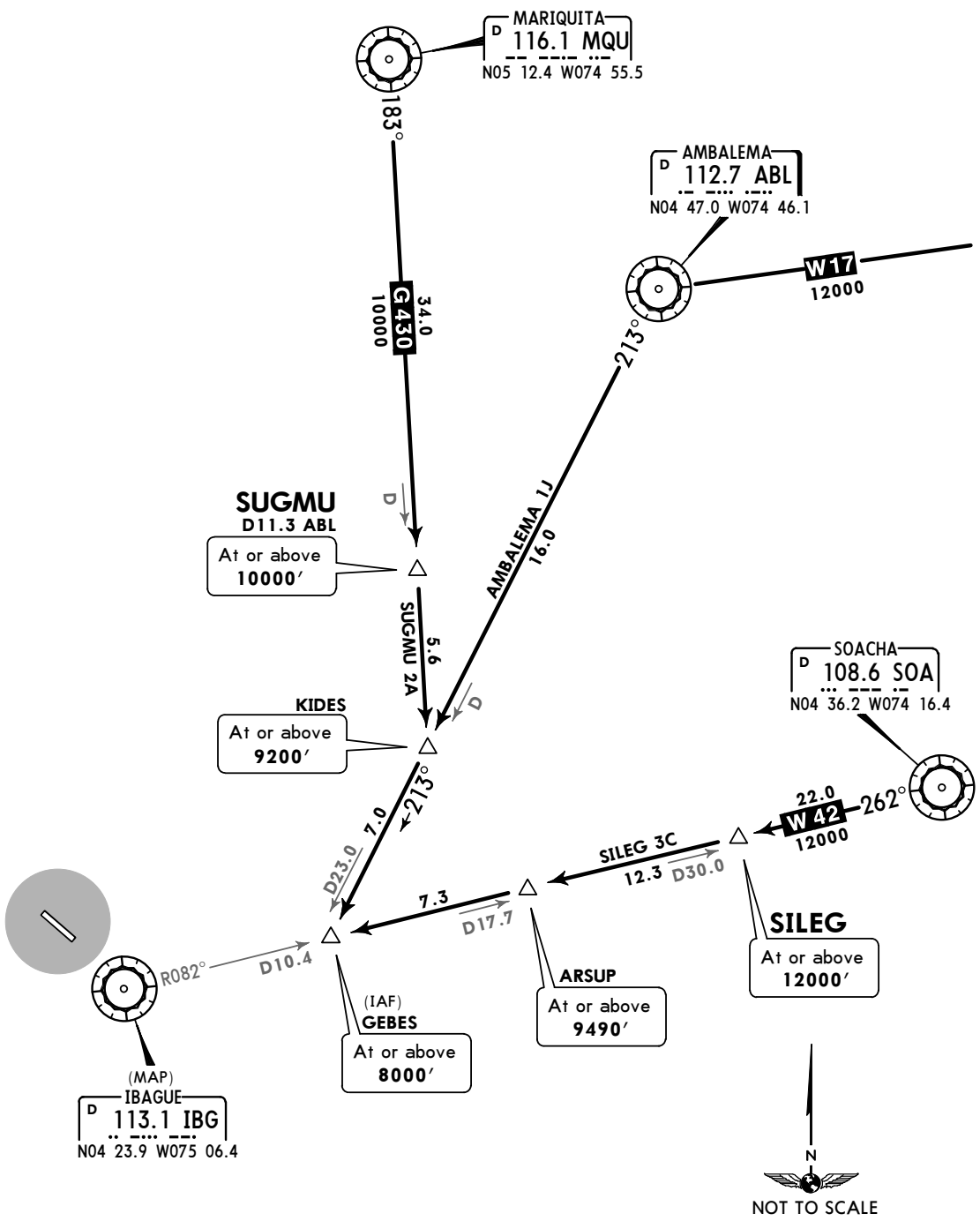
Apt Elev
3041'

Alt Set: IN (hPa on req)
Trans level: FL190 Trans alt: 18000'
ABL DME, IBG DME, and MQU DME required.



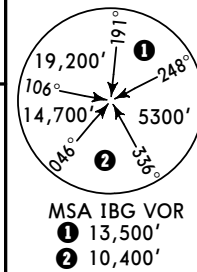
**AMBALEMA 1J [ABL1J], SILEG 3C [SILE3C]
SUGMU 2A [SUGM2A]
ARRIVALS
(RWY 32)**

CAT A, B & C



Apt Elev
3041'

Trans level: FL 190 Trans alt: 18000'
The climb gradient of 9% has been established for operational purposes.

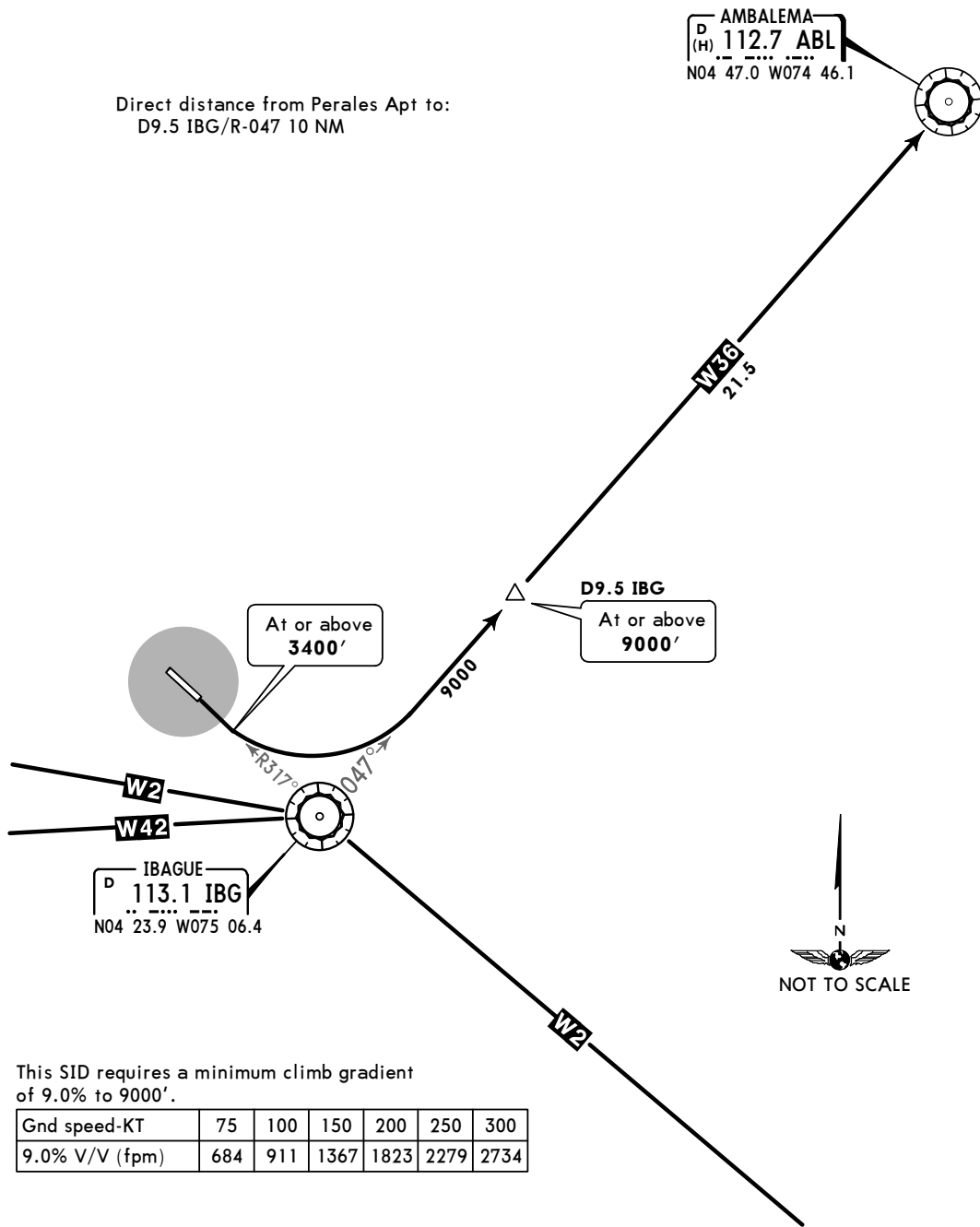


AMBALEMA 1H (ABL1H)
(RWY 14)

CAT A, B & C

Direct distance from Perales Apt to:
D9.5 IBG/R-047 10 NM

AMBALEMA
D (H) 112.7 ABL
N04 47.0 W074 46.1



This SID requires a minimum climb gradient of 9.0% to 9000'.

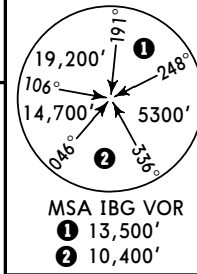
| | | | | | | |
|----------------|-----|-----|------|------|------|------|
| Gnd speed-KT | 75 | 100 | 150 | 200 | 250 | 300 |
| 9.0% V/V (fpm) | 684 | 911 | 1367 | 1823 | 2279 | 2734 |

INITIAL CLIMB

MAINTAIN runway heading to 3400', then turn LEFT and intercept W-36.

Apt Elev
3041'

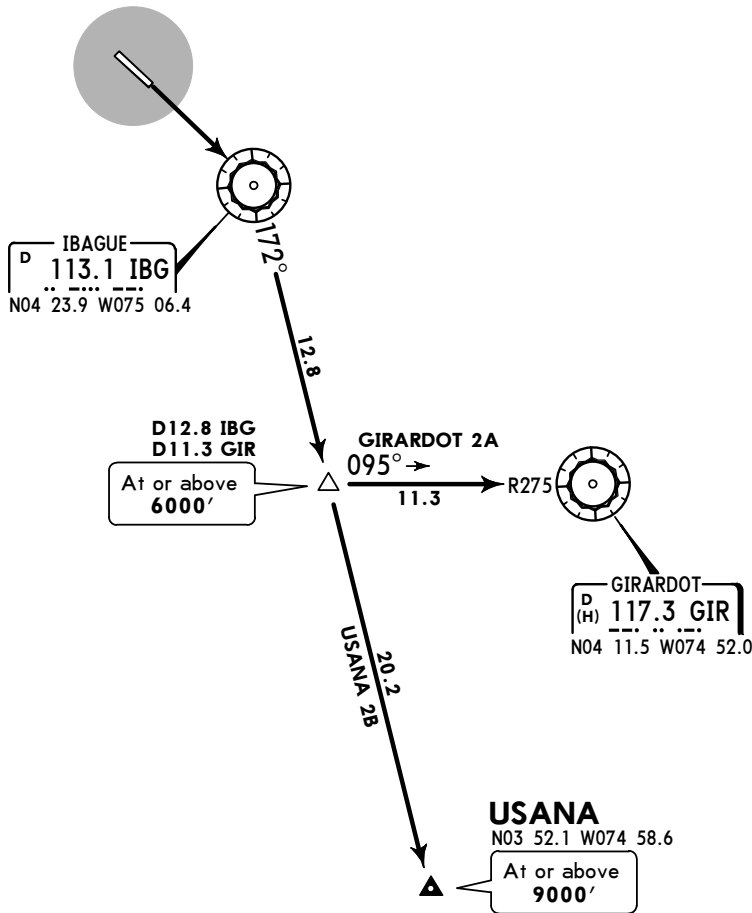
Trans level: FL 190 Trans alt: 18000'



**GIRARDOT 2A (GIR 2A) [GIR2A]
 USANA 2B (USANA 2B) [USAN2B]
 (RWY 14)**

CAT A, B & C

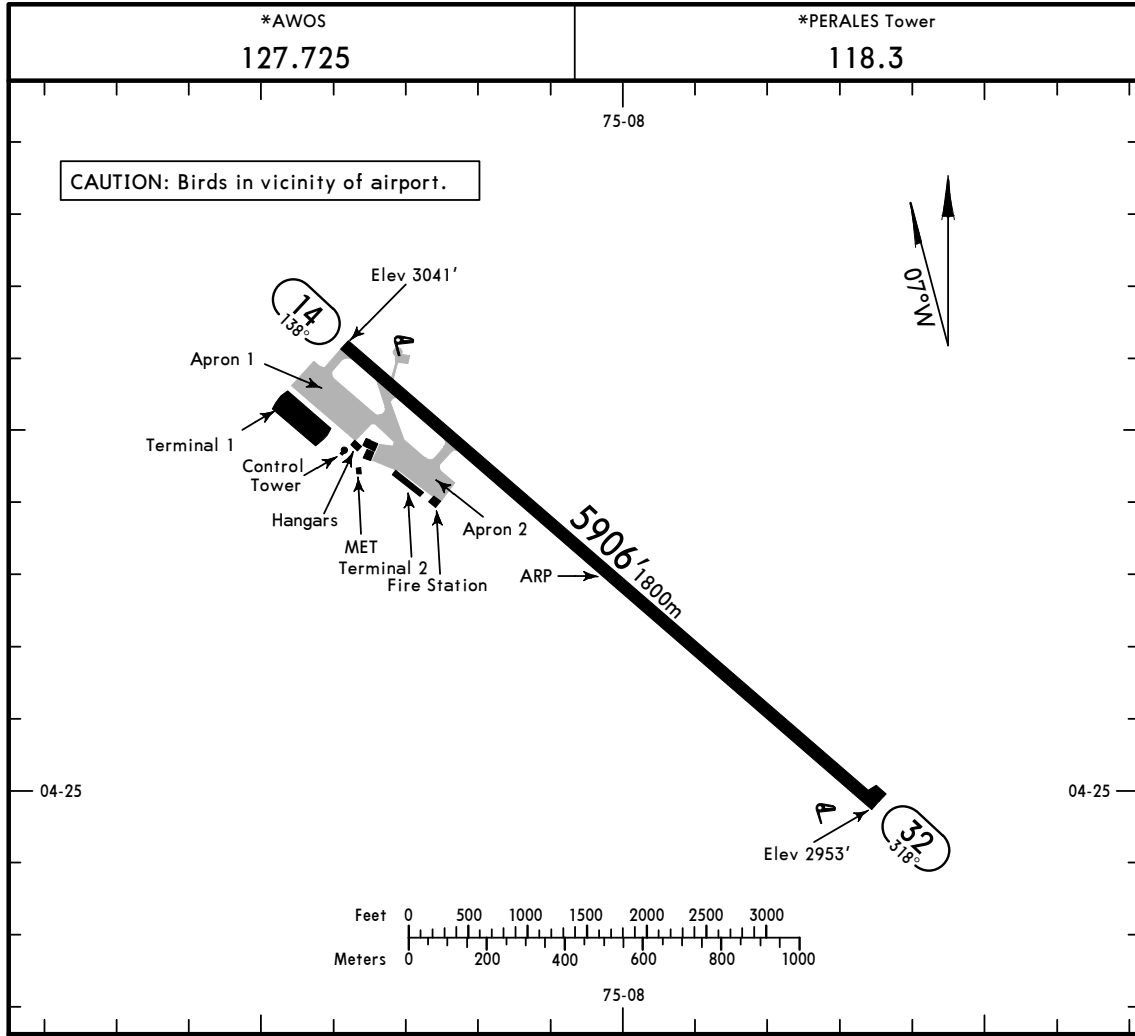
Direct distance from Perales Apt to:
 IBG VOR 2 NM



These SIDs require a minimum climb gradient of 3.6% to IBG VOR, then 3.4%.

| Gnd speed-KT | 75 | 100 | 150 | 200 | 250 | 300 |
|----------------|-----|-----|-----|-----|-----|------|
| 3.4% V/V (fpm) | 258 | 344 | 516 | 689 | 861 | 1033 |
| 3.6% V/V (fpm) | 273 | 365 | 547 | 729 | 911 | 1094 |





ADDITIONAL RUNWAY INFORMATION

| RWY | | USABLE LENGTHS | | TAKE-OFF | WIDTH |
|-----|------------------------|----------------|-------------|----------|------------|
| | | Threshold | Glide Slope | | |
| 14 | MIRL | | | | 98' 30m |
| 32 | MIRL PAPI (angle 3.0°) | | | | |
| | | | | | |
| | | | | | |
| | | | | | |
| | | | | | |

TAKE-OFF & DEPARTURE PROCEDURE

| All Rwy's | | |
|---|---------------------------------------|-------|
| 1 Take-off Alternate Airport Filed RL & CL or RCLM | | STD |
| 1 Eng | 600' - 3000m | |
| 2 Eng | 1 hour alternate (1 Eng inop) 500m | 1600m |
| 3 & 4 Eng | 2 hour alternate (1 Eng inop) 500m | 800m |

1 With appropriate approval.
 DEPARTURE PROCEDURE: IFR departures must comply with published SID's.

