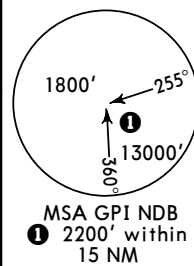


Apt Elev
32'

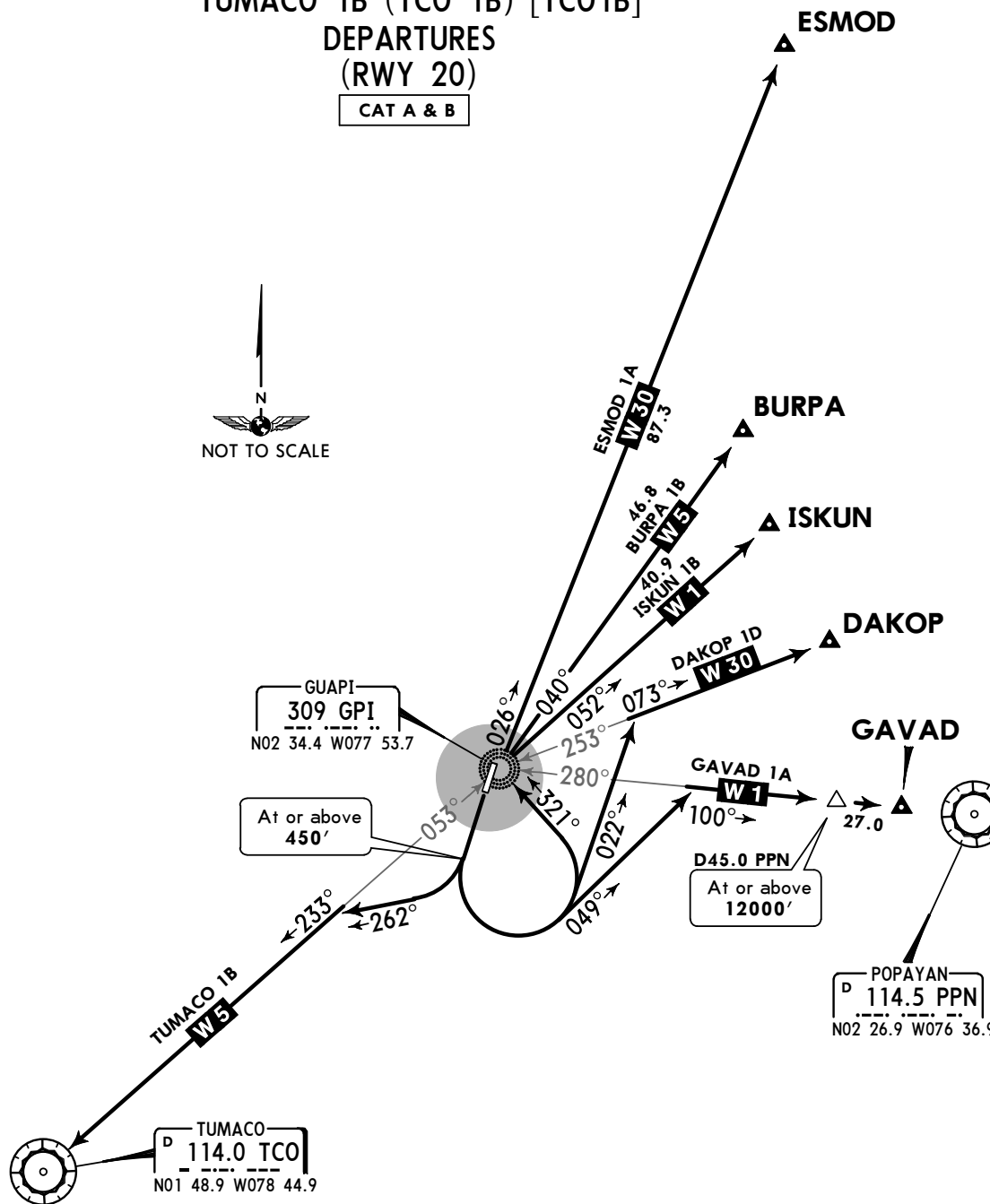
Trans level: FL190 Trans alt: 18000'



BURPA 1B (BURPA 1B) [BURP1B]
 DAKOP 1D (DAKOP 1D) [DAK01D]
 ESMOD 1A (ESMOD 1A) [ESM01A]
 GAVAD 1A (GAVAD 1A) [GAVA1A]
 ISKUN 1B (ISKUN 1B) [ISKU1B]
 TUMACO 1B (TCO 1B) [TCO1B]

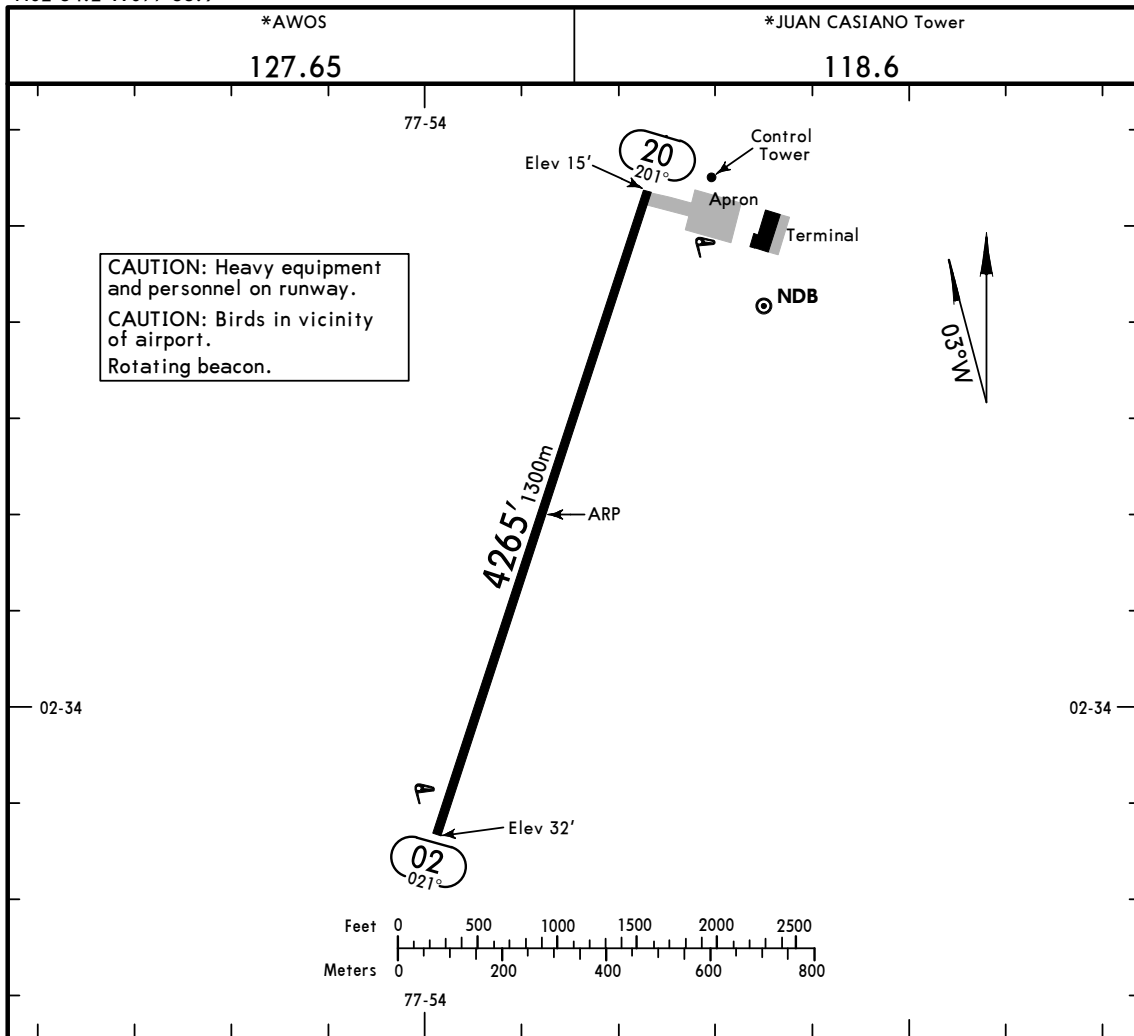
DEPARTURES
(RWY 20)

CAT A & B



These SIDs require minimum climb gradients:
 GAVAD 1A: 5.5% until 12000'.

Gnd speed-KT	75	100	150	200	250	300
5.5% V/V (fpm)	418	557	835	1114	1392	1671

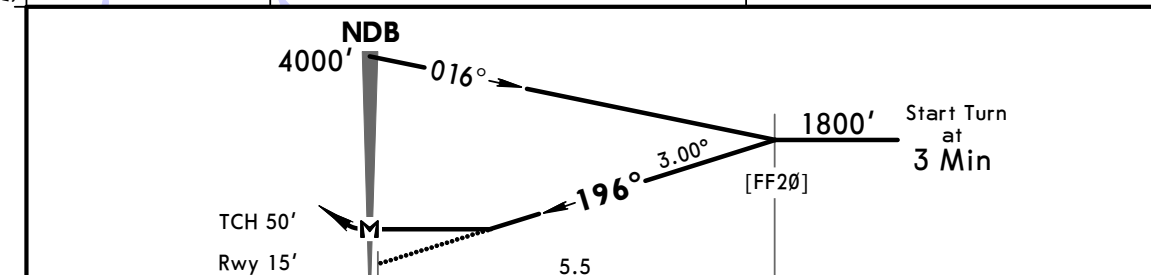
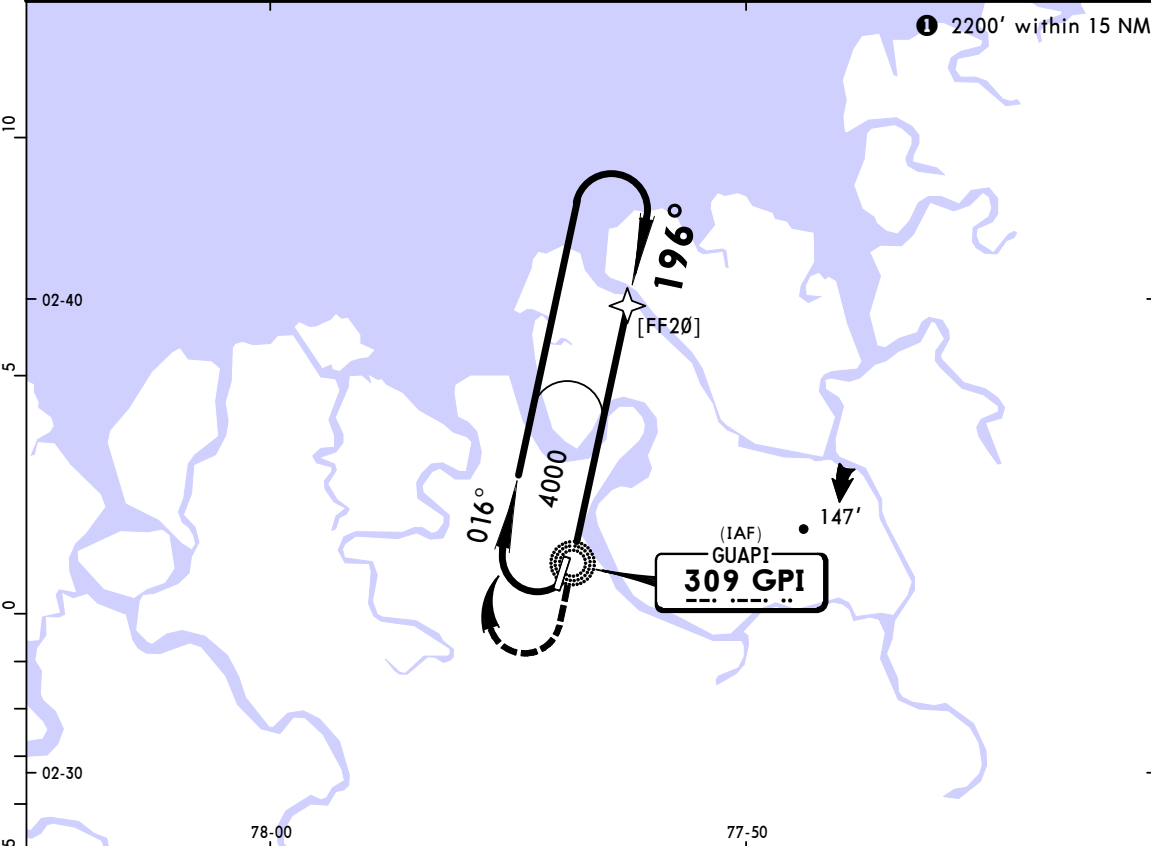


ADDITIONAL RUNWAY INFORMATION

RWY		USABLE LENGTHS		TAKE-OFF	WIDTH
		Threshold	Glide Slope		
02	RL	4255'	1297m		52' 16m
20	RL APAPI (angle 3.0°)				

TAKE-OFF	
	All Rwys
	NDB Rwy 20
A	470' - 2300m
B	
C	
D	

*AWOS 127.65			*JUAN CASIANO Tower 118.6		
NDB GPI 309	Final Apch Crs 196°	No FAF	MDA(H) 470' (455')	Apt Elev 32' Rwy 15'	
MISSED APCH: Climbing RIGHT turn to GPI NDB and hold at 4000'.					
Alt Set: IN (hPa on req)		Trans level: FL 190		Trans alt: 18000'	



Gnd speed-Kts	70	90	100	120	140	160	APAPI	4000' to GPI 309
Descent Angle 3.00°	372	478	531	637	743	849		
MAP at NDB								

STRAIGHT-IN LANDING RWY 20			CIRCLE-TO-LAND		
MDA(H) 470' (455')			MDA(H) _____		
A	2300m		Max Kts	_____	
B			100	470' (438') - 2300m	
C			135		
C	NOT APPLICABLE		C	NOT APPLICABLE	
D			D		