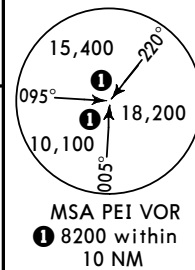


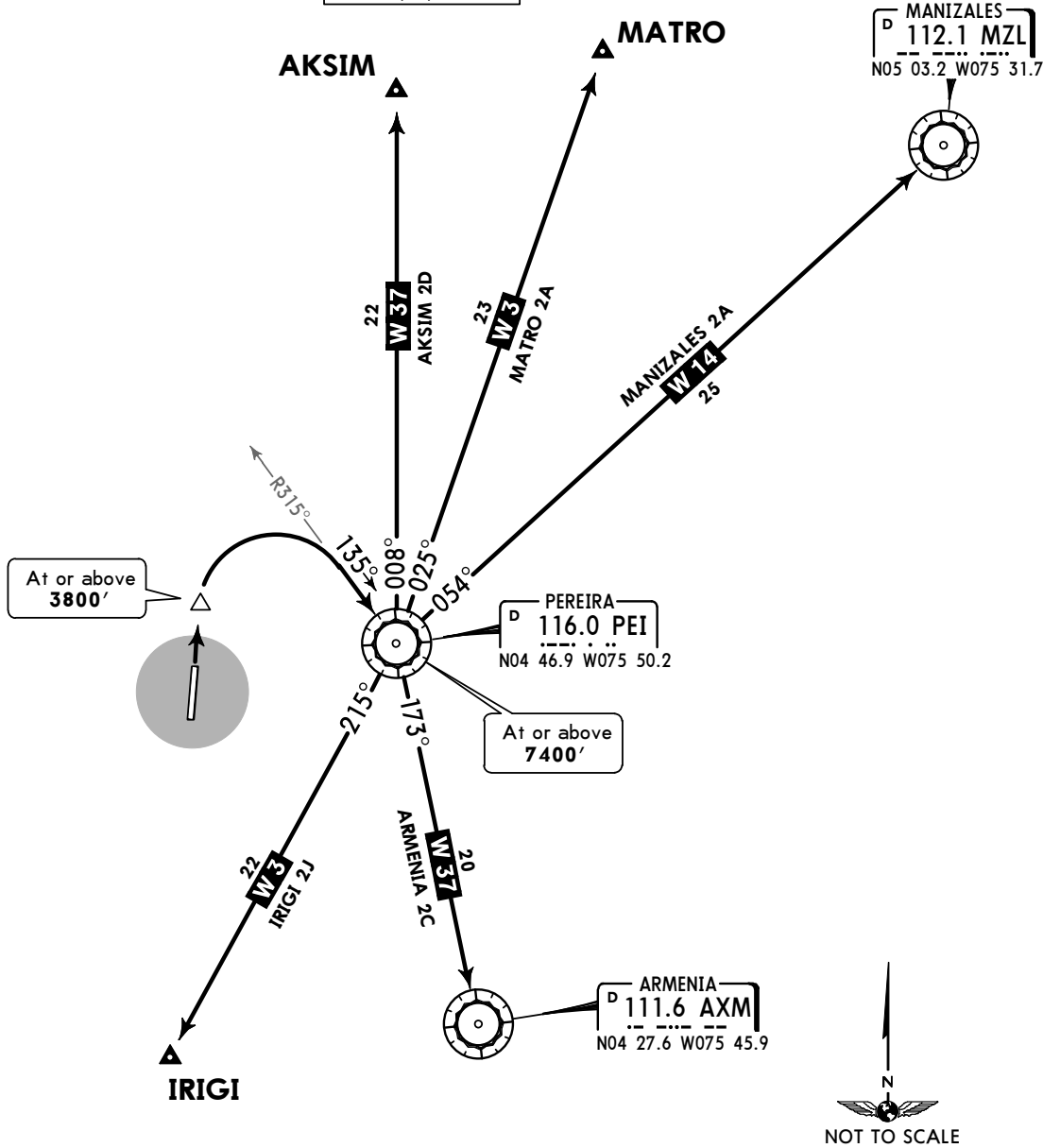
Apt Elev
2981'

Trans level: FL190 Trans alt: 18000'



**AKSIM 2D [AKSI2D]
ARMENIA 2C [AXM2C]
IRIGI 2J [IRIG2J]
MANIZALES 2A [MZL2A]
MATRO 2A [MATR2A]
DEPARTURES
(RWY 01)**

CAT A, B, C & D

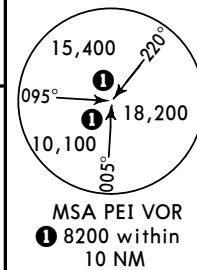


These SIDs require a minimum climb gradient of 6.5% until PEI VOR, then 5.0% until reaching MEA of the route.

Gnd speed-KT	75	100	150	200	250	300
5.0% V/V (fpm)	380	506	760	1013	1266	1519
6.5% V/V (fpm)	494	658	987	1317	1646	1975

Apt Elev
2981'

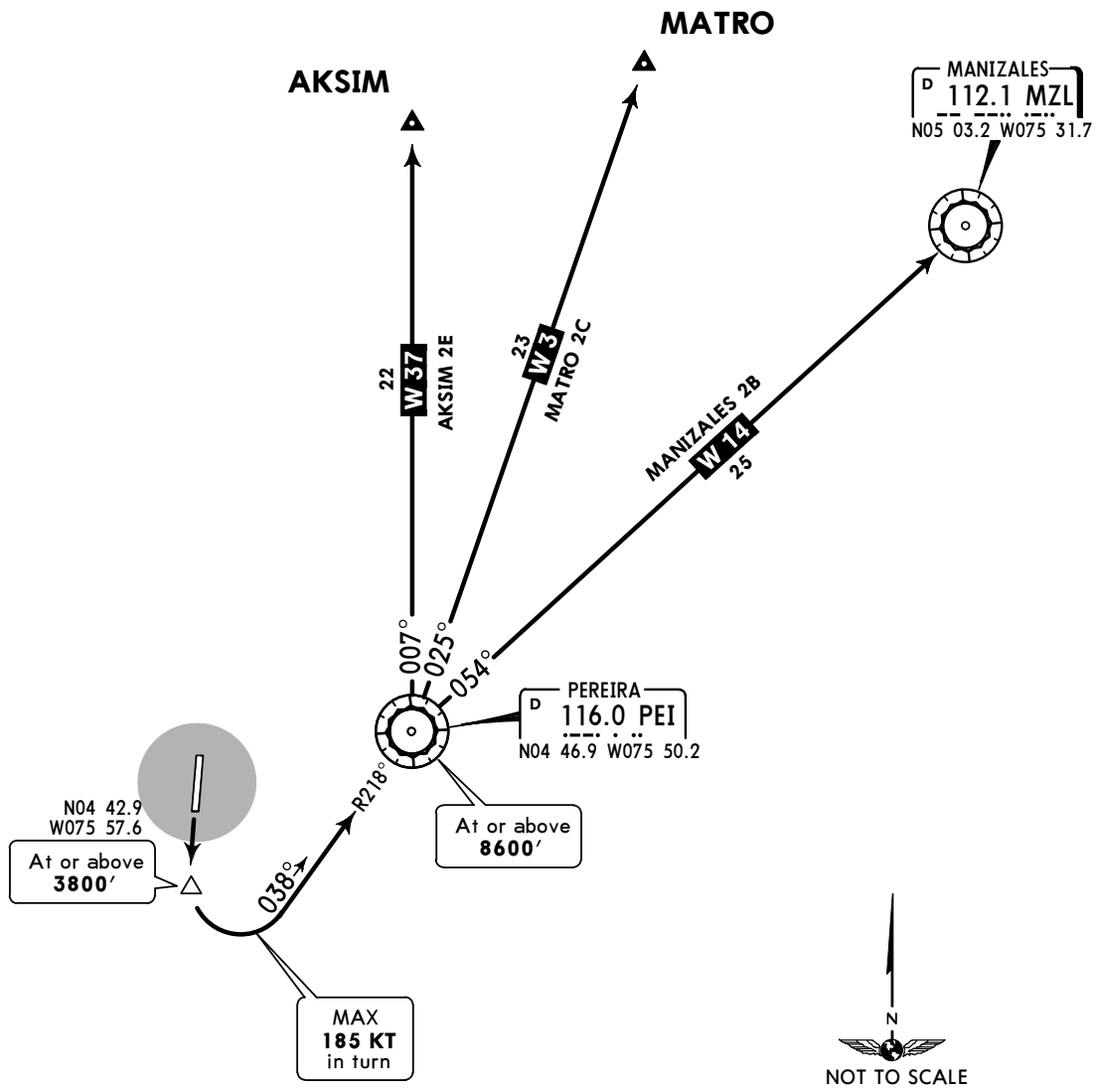
Trans level: FL190 Trans alt: 18000'



**AKSIM 2A [AKSI2E]
MANIZALES 2B [MZL2B]
MATRO 2C [MATR2C]
DEPARTURES
(RWY 19)**

SPEED: MAX 185 KT IN TURN

CAT A, B, C & D

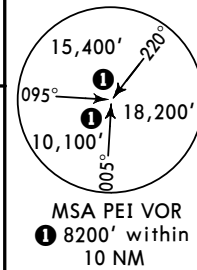


These SIDs require a minimum climb gradient of 6.5% until reaching MEA of the route.

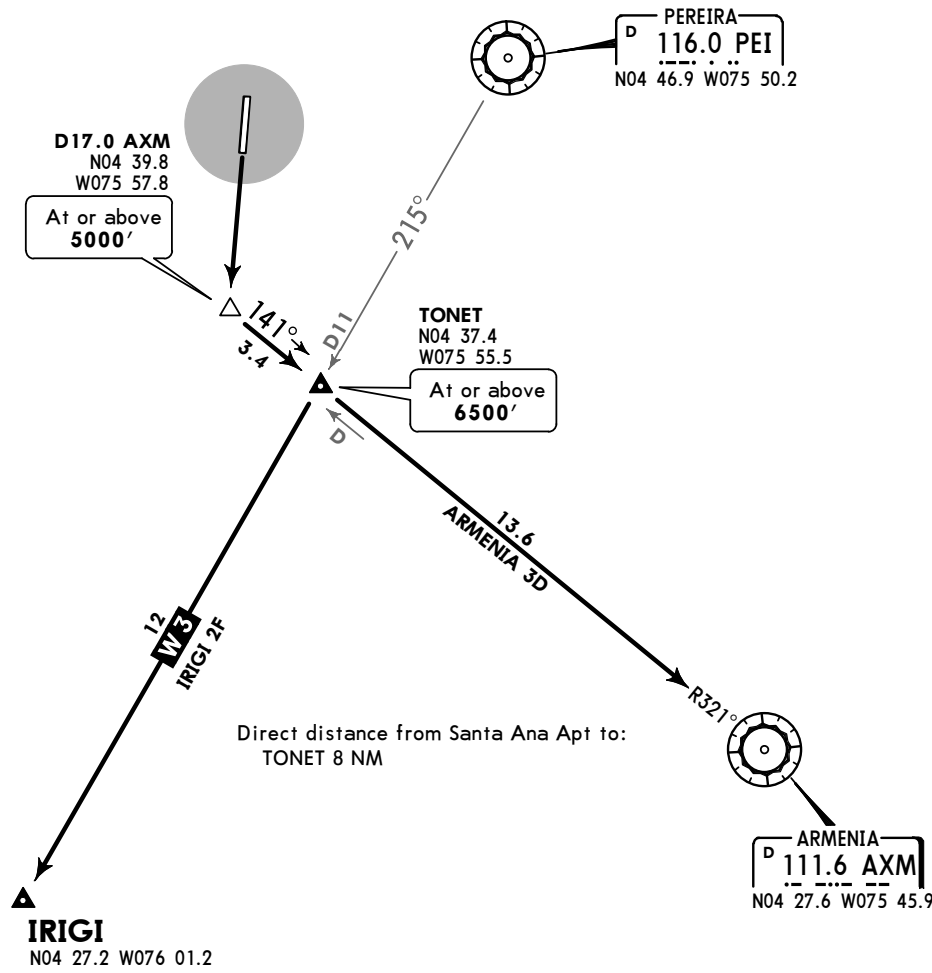
Gnd speed-KT	75	100	150	200	250	300
6.5% V/V (fpm)	494	658	987	1317	1646	1975

Apt Elev
2979'

Trans level: FL190 Trans alt: 18000'
1. ARMENIA 3D: AXM VOR/DME required.
2. IRIGI 2F: AXM and PEI VOR/DME required.



**ARMENIA 3D (AXM 3D) [AXM3D]
IRIGI 2F (IRIGI 2F) [IRIG2F]
DEPARTURES
(RWY 19)**

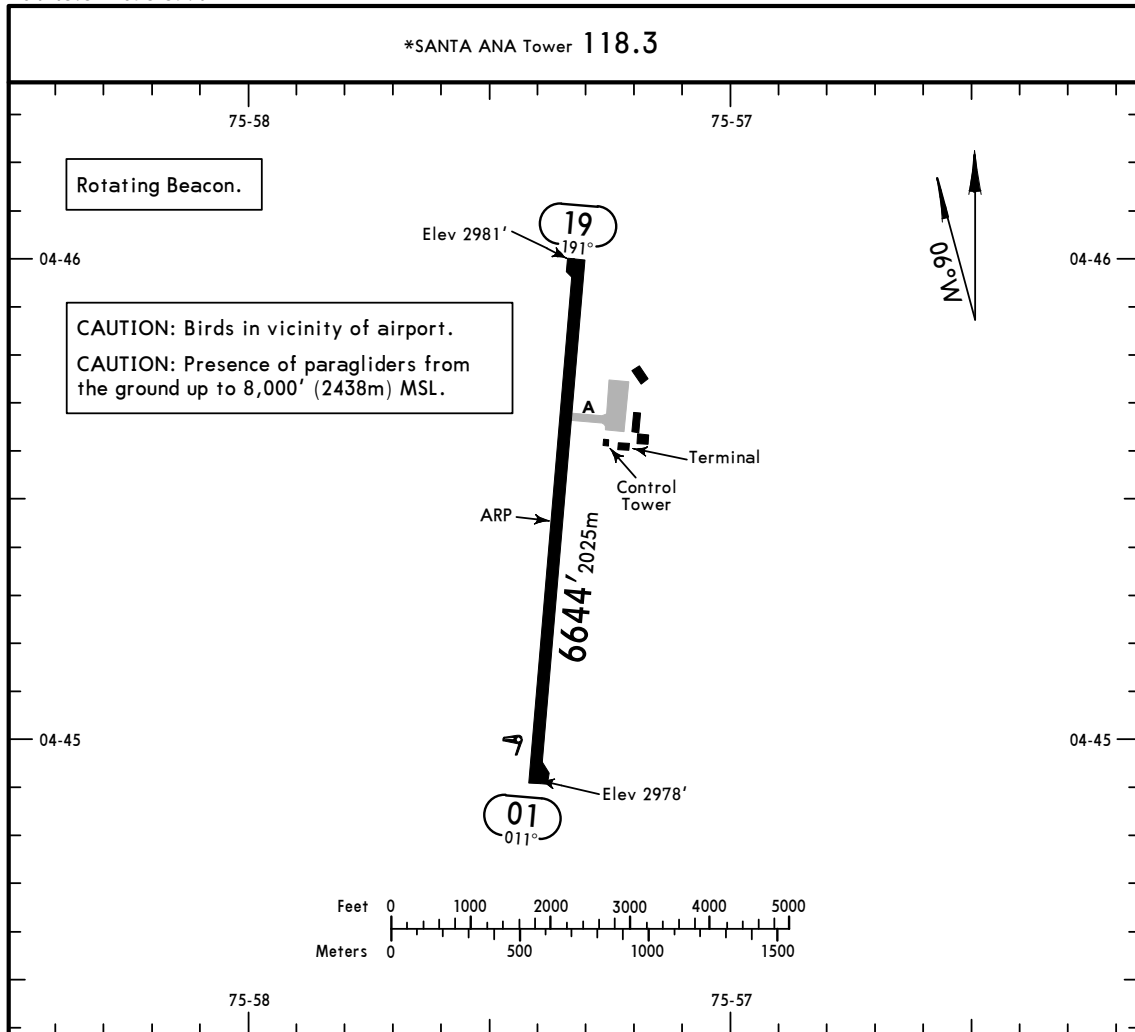


Direct distance from Santa Ana Apt to:
TONET 8 NM



These SIDs require minimum climb gradients:
ARMENIA 3D: 6.5% to AXM VOR.
IRIGI 2F: 6.5% to IRIGI.

Gnd speed-KT	75	100	150	200	250	300
6.5% V/V (fpm)	494	658	987	1317	1646	1975



ADDITIONAL RUNWAY INFORMATION

RWY	LANDING BEYOND	USABLE LENGTHS		WIDTH
		Threshold	Glide Slope	
01 19	RL PAPI-L (angle 3.00°)			131' 40m

1 TAKE-OFF RUN AVAILABLE

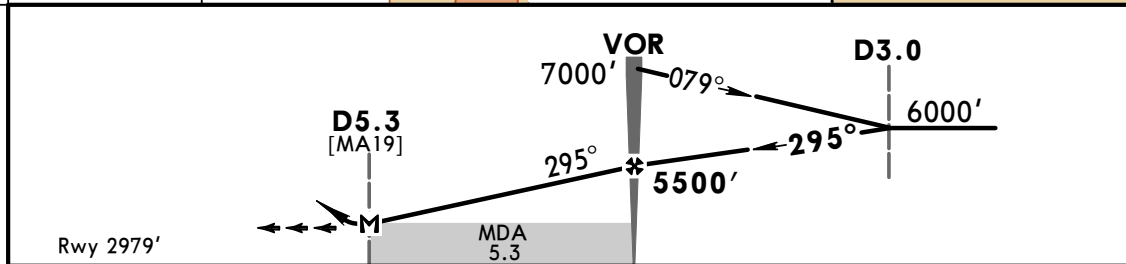
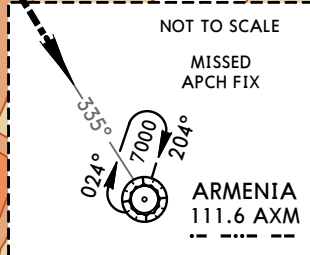
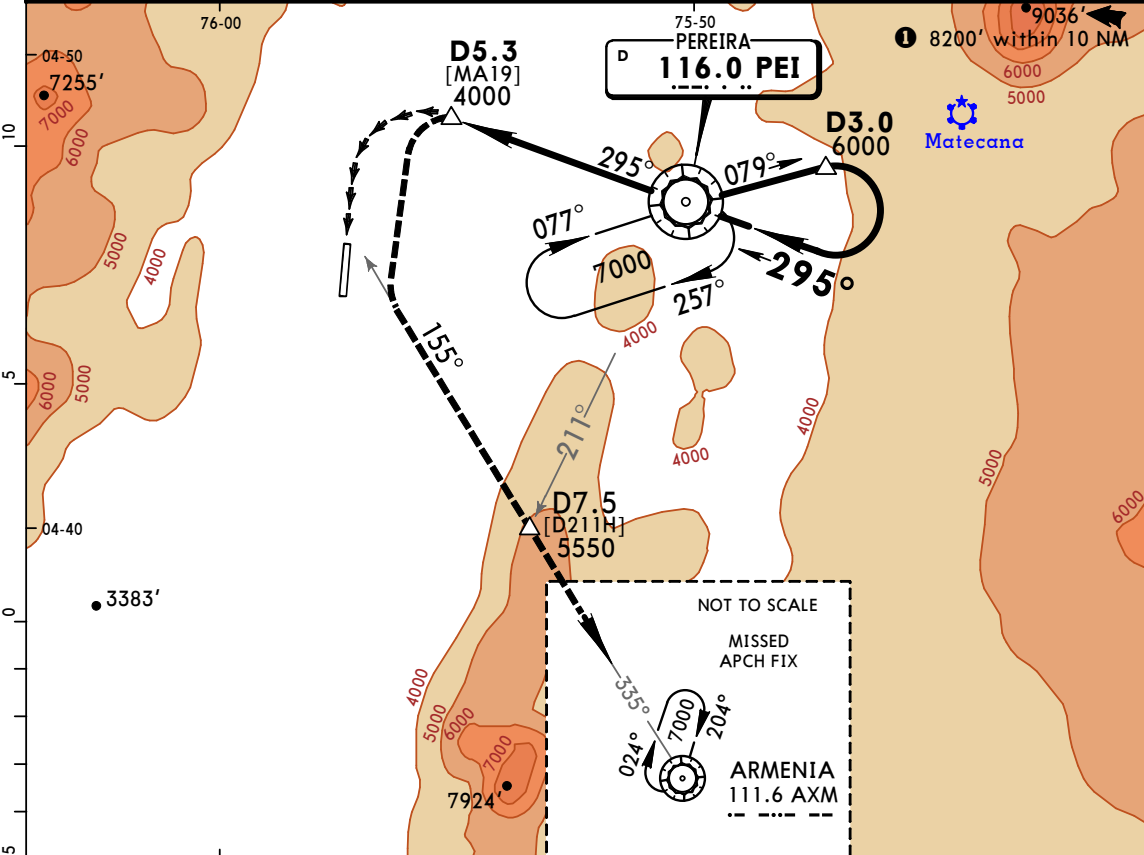
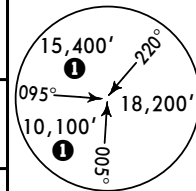
RWY 19:

Full length 6644' (2025m)
 Twy A 4593' (1400m)

TAKE-OFF	
All Rwy's	
1 Eng	450'-2000m
2 Eng	1 hour take-off alternate airport filed (1 Eng inop) 500m
3 & 4 Eng	2 hour take-off alternate airport filed (1 Eng inop) 500m

1 With appropriate approval.

*PEREIRA Approach 120.7			*SANTA ANA Tower 118.3		
VOR PEI 116.0	Final Apch Crs 295°	Minimum Alt VOR 5500' (2521')	MDA(H) Refer to Minimums	Apt Elev 2979' Rwy 2979'	
MISSED APCH: Turn LEFT climbing inbound on AXM VOR R-155 to AXM VOR to 7000'. Cross PEI VOR R-211 at or above 5550'.					
Alt Set: IN (MB on req)		Trans level: FL 190		Trans alt: 18000'	
1. DME required.			2. Maximum IAS between FAF & MAP 160 Kts.		



Gnd speed-Kts	70	90	100	120	140	160	PAPI-L	7000' AXM LT on 111.6 R-155
MAP at D5.3 or FAF to MAP	5.3	4:33	3:32	3:11	2:39	2:16		

1 CIRCLE-TO-LAND Missed Apch Climb Gradient Mim 3.4%											
<table border="1"> <tr> <td>Max Kts</td> <td>MDA(H)</td> </tr> <tr> <td>A 100</td> <td></td> </tr> <tr> <td>B 135</td> <td></td> </tr> <tr> <td>C 180</td> <td></td> </tr> <tr> <td>D 205</td> <td></td> </tr> </table>	Max Kts	MDA(H)	A 100		B 135		C 180		D 205		4030' (1051') -5000m
Max Kts	MDA(H)										
A 100											
B 135											
C 180											
D 205											